



# **Add, remove, or delete systems**

## **Cloud Volumes ONTAP**

NetApp  
April 23, 2024

This PDF was generated from <https://docs.netapp.com/us-en/bluexp-cloud-volumes-ontap/task-adding-systems.html> on April 23, 2024. Always check docs.netapp.com for the latest.

# Table of Contents

- Add, remove, or delete systems . . . . . 1
  - Adding existing Cloud Volumes ONTAP systems to BlueXP . . . . . 1
  - Removing Cloud Volumes ONTAP working environments . . . . . 1
  - Deleting a Cloud Volumes ONTAP system . . . . . 2

# Add, remove, or delete systems

## Adding existing Cloud Volumes ONTAP systems to BlueXP

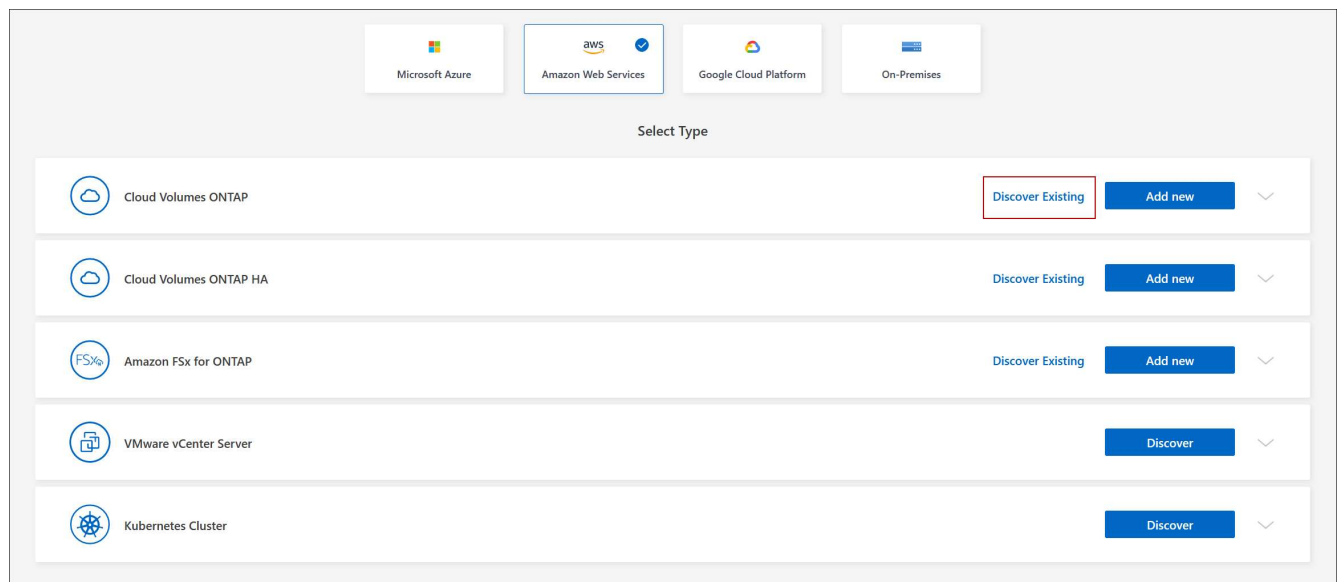
You can discover and add existing Cloud Volumes ONTAP systems to BlueXP. You might do this if you deployed a new BlueXP system.

### Before you begin

You must know the password for the Cloud Volumes ONTAP admin user account.

### Steps

1. From the left navigation menu, select **Storage > Canvas**.
2. On the Canvas page, click **Add Working Environment**.
3. Select the cloud provider in which the system resides.
4. Choose the type of Cloud Volumes ONTAP system.
5. Click the link to discover an existing system.



6. On the Region page, choose the region where the instances are running, and then select the instances.
7. On the Credentials page, enter the password for the Cloud Volumes ONTAP admin user, and then click **Go**.

### Result

BlueXP adds the Cloud Volumes ONTAP instances to the workspace.

## Removing Cloud Volumes ONTAP working environments

The Account Admin can remove a Cloud Volumes ONTAP working environment to move it to another system or to troubleshoot discovery issues.

### About this task

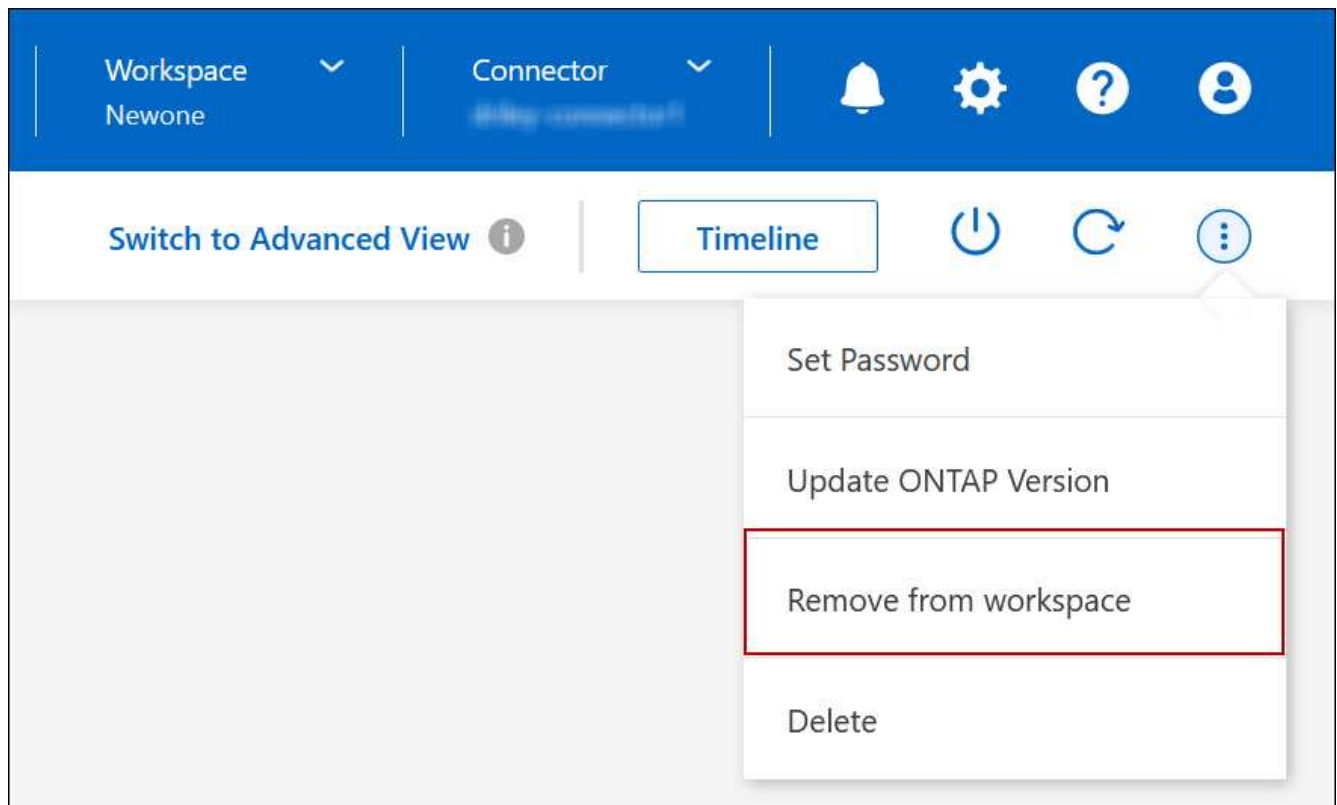
Removing a Cloud Volumes ONTAP working environment removes it from BlueXP. It does not delete the Cloud Volumes ONTAP system. You can later rediscover the working environment.

Removing a working environment from BlueXP enables you to do the following:

- Rediscover it in another workspace
- Rediscover it from another BlueXP system
- Rediscover it if you had problems during the initial discovery

### Steps

1. On the Canvas page, double-click on the working environment you want to remove.
2. On the upper right of the BlueXP console, click the ellipse icon, and select **Remove from workspace**.



3. In the Review from Workspace window, click **Remove**.

### Result

BlueXP removes the working environment. Users can rediscover this working environment from the Canvas page at any time.

## Deleting a Cloud Volumes ONTAP system

You should always delete Cloud Volumes ONTAP systems from BlueXP, rather than from your cloud provider's console. For example, if you terminate a licensed Cloud Volumes ONTAP instance from your cloud provider, then you can't use the license key for another instance. You must delete the working environment from BlueXP to release the license.

When you delete a working environment, BlueXP terminates Cloud Volumes ONTAP instances and deletes

disks and snapshots.

Resources managed by other services like backups for BlueXP backup and recovery and instances for BlueXP classification are not deleted when you delete a working environment. You'll need to manually delete them yourself. If you don't, then you'll continue to receive charges for these resources.



When BlueXP deploys Cloud Volumes ONTAP in your cloud provider, it enables termination protection on the instances. This option helps prevent accidental termination.

## Steps

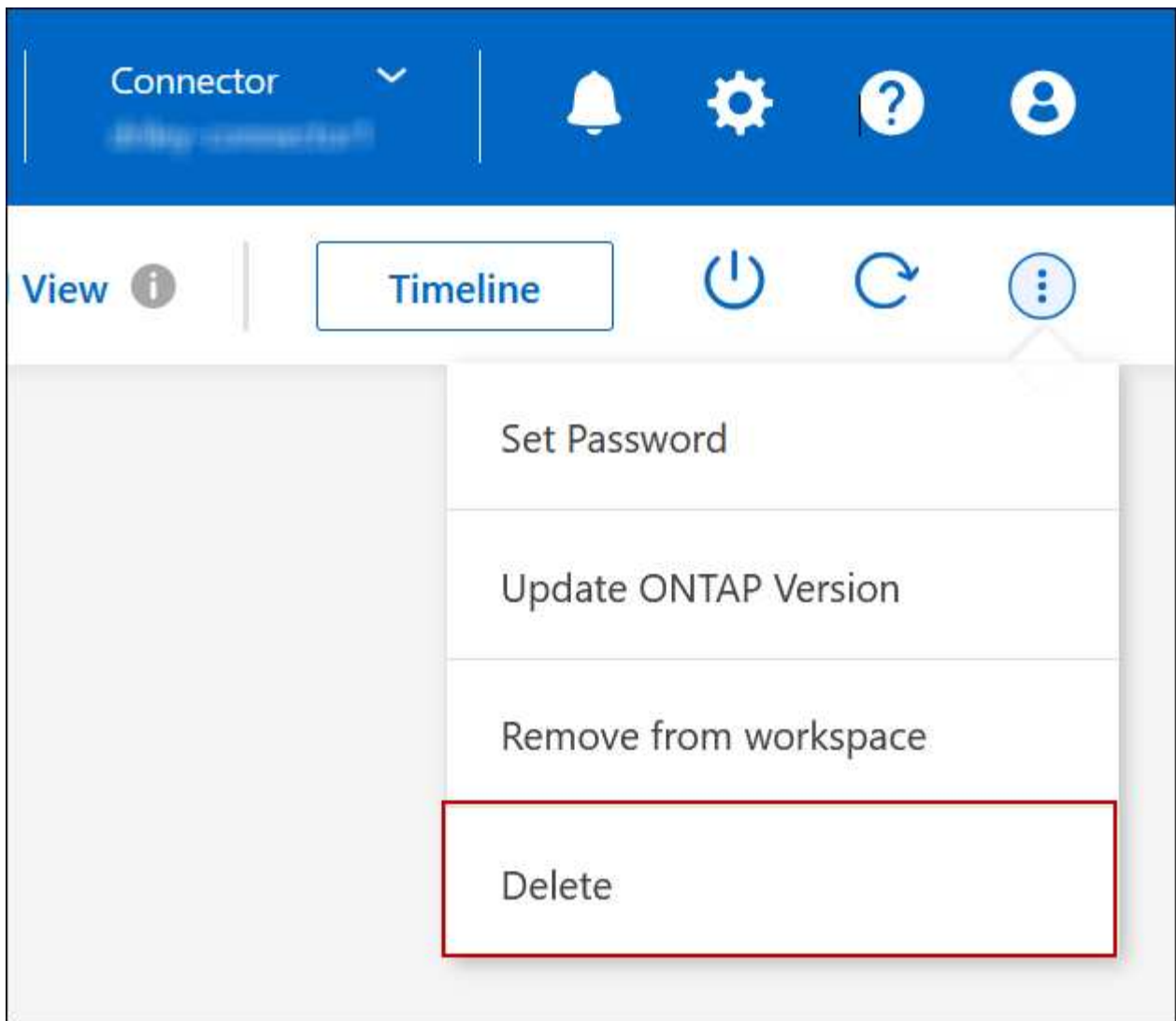
1. If you enabled BlueXP backup and recovery on the working environment, determine whether the backed up data is still required and then [delete the backups, if necessary](#).

BlueXP backup and recovery is independent from Cloud Volumes ONTAP by design. BlueXP backup and recovery doesn't automatically delete backups when you delete a Cloud Volumes ONTAP system, and there is no current support in the UI to delete the backups after the system has been deleted.

2. If you enabled BlueXP classification on this working environment and no other working environments use this service, then you'll need to delete the instance for the service.

[Learn more about the BlueXP classification instance.](#)

3. Delete the Cloud Volumes ONTAP working environment.
  - a. On the Canvas page, double-click the name of the Cloud Volumes ONTAP working environment that you want to delete.
  - b. On the upper right of the BlueXP console, click the ellipse icon, and select **Delete**.



- c. Under the Delete Working Environment window, type the name of the working environment and then click **Delete**.

It can take up to 5 minutes to delete the working environment.

## Copyright information

Copyright © 2024 NetApp, Inc. All Rights Reserved. Printed in the U.S. No part of this document covered by copyright may be reproduced in any form or by any means—graphic, electronic, or mechanical, including photocopying, recording, taping, or storage in an electronic retrieval system—without prior written permission of the copyright owner.

Software derived from copyrighted NetApp material is subject to the following license and disclaimer:

THIS SOFTWARE IS PROVIDED BY NETAPP “AS IS” AND WITHOUT ANY EXPRESS OR IMPLIED WARRANTIES, INCLUDING, BUT NOT LIMITED TO, THE IMPLIED WARRANTIES OF MERCHANTABILITY AND FITNESS FOR A PARTICULAR PURPOSE, WHICH ARE HEREBY DISCLAIMED. IN NO EVENT SHALL NETAPP BE LIABLE FOR ANY DIRECT, INDIRECT, INCIDENTAL, SPECIAL, EXEMPLARY, OR CONSEQUENTIAL DAMAGES (INCLUDING, BUT NOT LIMITED TO, PROCUREMENT OF SUBSTITUTE GOODS OR SERVICES; LOSS OF USE, DATA, OR PROFITS; OR BUSINESS INTERRUPTION) HOWEVER CAUSED AND ON ANY THEORY OF LIABILITY, WHETHER IN CONTRACT, STRICT LIABILITY, OR TORT (INCLUDING NEGLIGENCE OR OTHERWISE) ARISING IN ANY WAY OUT OF THE USE OF THIS SOFTWARE, EVEN IF ADVISED OF THE POSSIBILITY OF SUCH DAMAGE.

NetApp reserves the right to change any products described herein at any time, and without notice. NetApp assumes no responsibility or liability arising from the use of products described herein, except as expressly agreed to in writing by NetApp. The use or purchase of this product does not convey a license under any patent rights, trademark rights, or any other intellectual property rights of NetApp.

The product described in this manual may be protected by one or more U.S. patents, foreign patents, or pending applications.

LIMITED RIGHTS LEGEND: Use, duplication, or disclosure by the government is subject to restrictions as set forth in subparagraph (b)(3) of the Rights in Technical Data -Noncommercial Items at DFARS 252.227-7013 (FEB 2014) and FAR 52.227-19 (DEC 2007).

Data contained herein pertains to a commercial product and/or commercial service (as defined in FAR 2.101) and is proprietary to NetApp, Inc. All NetApp technical data and computer software provided under this Agreement is commercial in nature and developed solely at private expense. The U.S. Government has a non-exclusive, non-transferrable, nonsublicensable, worldwide, limited irrevocable license to use the Data only in connection with and in support of the U.S. Government contract under which the Data was delivered. Except as provided herein, the Data may not be used, disclosed, reproduced, modified, performed, or displayed without the prior written approval of NetApp, Inc. United States Government license rights for the Department of Defense are limited to those rights identified in DFARS clause 252.227-7015(b) (FEB 2014).

## Trademark information

NETAPP, the NETAPP logo, and the marks listed at <http://www.netapp.com/TM> are trademarks of NetApp, Inc. Other company and product names may be trademarks of their respective owners.