



Configuring your system to report chargeback data

OnCommand Insight

NetApp
April 01, 2024

Table of Contents

- Configuring your system to report chargeback data 1
 - Defining annotations for use with chargeback 1
 - Defining applications for use with chargeback 2
 - Assigning applications to assets 2
 - Creating a simple Chargeback report 5

Configuring your system to report chargeback data

Chargeback reports provide storage capacity chargeback and accountability information by hosts, application, and business entities, and include both current and historical data.

This guide describes how to configure Insight to generate a chargeback report providing accountability for service level costs and storage usage cost. The intent of the guide is to provide the steps required to create a simple chargeback report, and familiarize Insight users with the options available when configuring chargeback in their unique environment.

For each application, the example report identifies the resources provisioned and the cost of the resources. The output for the report is created by defining the following data in Insight

- Storage tiers
- Cost associated with each storage tier
- Provisioned storage capacity
- Service levels
- Cost per service level

The following sections describe the steps required to configure this data so that it can be accessed by Insight Reporting.

Defining annotations for use with chargeback

When customizing OnCommand Insight to track data for your corporate requirements, you can define specialized annotations needed to provide a complete picture of your data: for example, an annotation can define an asset's end of life, or the data center the asset resides in, or a storage tier defining the cost per GB of the storage.

About this task

The chargeback report example in this guide provides data for Service level and for Tier level. You must create annotations for each Service level and Tier level and then define costs for the Service levels and Tier levels.

Steps

1. Log in to the Insight web UI
2. Click **Manage > Annotations**

The annotations page displays.

3. Position your cursor over the Service Level, or Tier annotation, and click .

The Edit Annotation dialog box displays.

4. Click **ADD** to add new Tiers and cost.

In the report example, the Tier and Service level names use the precious metal analogy of Gold, Silver, and

Bronze. You can use any naming convention chosen by your organization, for example, Tier 1, Level 2, Supreme.

5. Enter the values for the Gold-Fast, Gold, Silver, and Bronze Tiers and the costs associated with each.

The values you enter define the cost per-GB for the storage that is used by applications. The service level cost can be the cost of providing the service or the actual price to service the consumer. These costs will be reported in the Chargeback report.

6. Click **Save** when you finish.

Defining applications for use with chargeback

If you want to track cost data associated with specific applications running in your environment, you first need to define the applications.

Before you begin

If you want to associate application with a business entity, you must have already created the business entity.



This example does not associate any application with business entities.

Steps

1. Log in to the OnCommand Insight web UI.
2. Click **Manage > Application**

After you define an application, the Applications page displays the application's name, its priority, and, if applicable, the business entity associated with the application.

3. Click **Add**

The Add Application dialog box displays.

4. Enter a unique name for the application in the Name box. Enter the Applications identified in the Report: African Tours, APAC Commercial Sales, and so on.
5. Click **Priority** and select the priority (critical, high, medium, or low) for the application in your environment.
6. If you plan to use this application with a business entity, click **Business entity** and select the entity from the list.
7. You will not use volume sharing, click to clear the **Validate** volume sharing box.
8. Click **Save**.

The applications appears in the Applications page. If you click the application's name, Insight displays the asset page for the application. After defining an application, you can go to an asset page for host, virtual machine, volume, internal volume, or hypervisor to assign an application to an asset.

Assigning applications to assets

After defining your applications, you need to associate the applications with specific

assets. You can use a simple ad hoc method to apply an applications to an asset. Users looking to apply applications in bulk should use a query method to identify the assets they want to assign to an application.

Assigning applications to assets using an ad hoc method


You assign an application to an asset so that you can identify the resources of the asset that the application uses. If an asset has a cost assigned to it you can identify the cost that is incurred by the application and if the resource is measured by size, you can determine if the resource will need to be replenished.


About this task

Use the following method to assign applications to assets.

Steps

1. Log in to the OnCommand Insight web UI.
2. Locate the asset (host, virtual machine, volume, or internal volume) to which you want to apply the application by doing either of the following:


Option	Description
Navigate to the list of assets	Click Dashboard > Assets Dashboard and select the asset.
Search for the asset	Click  on the toolbar to display the Search assets box, type the name of the asset, and then select the asset from the list.

3. In the **User Data** section of the asset page, position your cursor over the name of the application currently assigned to the asset (if there is no application assigned, **None** is displayed) and then click  (Edit application).

The list of available applications for the selected asset is displayed. The applications that are currently associated with the asset are preceded by a check mark.

4. You can type in the Search box to filter the application names, or you can scroll down the list.
5. Select the applications you want to associate with the asset.

You can assign multiple applications to host, virtual machine, and internal volume; however, you can only assign one application to a volume.

6. Click  to assign the selected application or applications to the asset.

The application names appear in the User Data section; if the application is associated with a business entity, the name of the business entity appears in this section also.

Assigning applications to an asset using a query

You assign an application to an asset so that you can identify the resources of the asset that the application uses. If an asset has a cost assigned to it you can identify the cost that is incurred by the application and if the resource is measured by size, you can determine if the resource will need to be replenished.

About this task

You can simplify the task of assigning multiple assets to an application by using a query.

Steps

- 1. Create a new query to identify the assets you want to assign an application to. For example, if you want to assign it to a host with a specific name that relates to a geographic location, Click **Queries > +New Query**
- 2. Click **Host**
- 3. In the **Name** field, enter *Chicago*

The system displays all of the Hosts with *Chicago* as part if their name.

Host

Name

chicago

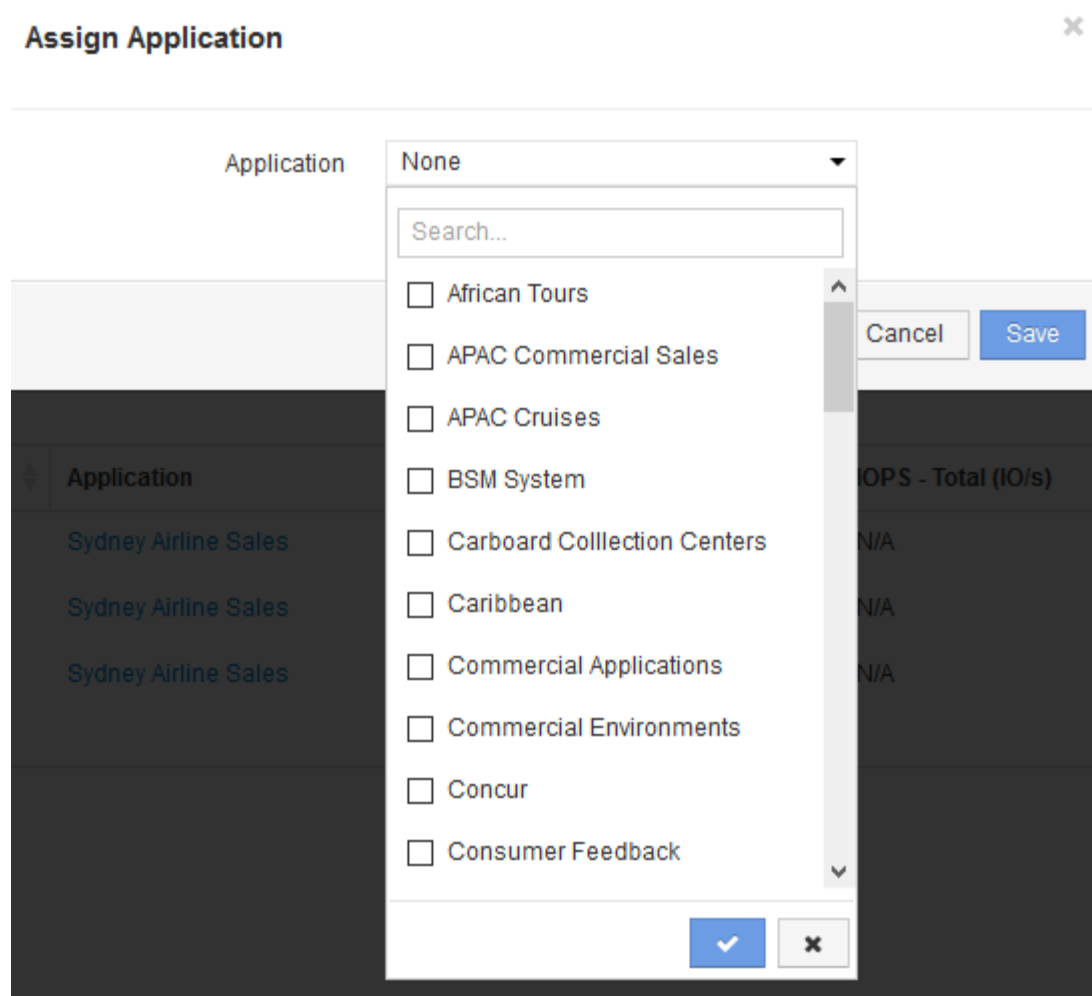
More

Query results


<input type="checkbox"/>	Name	IP	Application
<input type="checkbox"/>	Chicago-Host1	10.11.12.21	Sydney Airline Sales
<input type="checkbox"/>	Chicago-Host2	10.11.12.32	Sydney Airline Sales
<input type="checkbox"/>	Chicago-NAS	10.11.12.10	Sydney Airline Sales

Showing 1 to 3 of 3 entries

- 4. Select one or more of the Hosts identified by your query.
- 5. Click **Actions > Add Application**



The system displays the Assign application dialog.

6. Select the Application you want to assign to the Host and click 
7. Click **Save**

The application name appears in the User Data section.

Creating a simple Chargeback report

Chargeback reports allow administrators and managers to evaluate capacity usage by application, business entity, service level, and tier. The chargeback reports include capacity accountability, historical capacity accountability, and trending data. The data for these reports are built and scheduled from the OnCommand Insight Data Warehouse.

Before you begin

To create the sample report your system must be configured to report costs for storage tiers. The following tasks need to be completed:

- Define annotations for tiers.

- Assign costs to annotations.
- Define the applications you want to track data for.
- Assign applications to assets.

About this task

This example uses the Cognos Workspace Advanced reporting tool to create the Chargeback report. With Workspace Advanced, you create reports by dragging and dropping data elements into a report pallet.

Steps

1. In the OnCommand Insight web UI, click the reporting icon.
2. Log in to the Reporting Portal.
3. In the IBM Cognos Connection toolbar, click **Launch > Cognos Worksapce Advanced**

The Workspace Advanced package screen opens.

4. Click **Packages > Chargeback**

The IBM Workspace Advanace screen is displayed.

5. Click **New**
6. In the **New** report dialog Click **List** to specify a list report.

The report palette is displayed and the Chargeback “Simple data mart” and “Advanced data mart” are displayed under the Source heading.

7. Click the arrows next to each data mart to expand them.

The full contents of the data marts are displayed.

8. Drag “Application” from the “Simple Data Mart” into the far left column of the report palette.

When you drag an item into the palette the column shrinks and is highlighted. Dropping the application data into the highlighted columns results in all of the applications being listed correctly in the column.

9. Drag “Tier” from the “Simple Data Mart” into the next column of the report palette.

The storage tier associated with each application is added to the palette.

10. Drag “Tier Cost” from the “Simple Data Mart” into the next column of the report palette.
11. Drag “Provisioned capacity” from the “Simple Data Mart” into the next column of the report palette.
12. Hold down the **Ctrl** key and select the “Tier cost” and “Provisioned capacity” columns in the pallet.
13. Right-click the mouse in either of the selected columns.
14. Click **Calculate > Tier cost * Provisioned capacity DB**

A new column is added to the pallet with the title “Tier Cost * Provision Capacity GB”.

15. Right click the **Tier Cost * Provision Capacity GB** column.
16. Click **Style > Data Type**

17. Click **Format type > Currency**

18. Click **OK**

The column data is now formatted as US currency.

19. Right click “Tier Cost * Provision Capacity GB” and select **Edit Data Item Label**

20. Replace the Name field with “Provisioned Capacity Cost”

21. To run the report, click **Run > Run report - HTML**

A report similar to the following is displayed.

Application	Service Level	Service Level Cost	Tier	Tier Cost	Provisioned Capacity GB	Provisioned Capacity Cost
APAC Commercial Sales	Gold-Fast	12	Gold-Fast	12	674.04	\$8,088.42
APAC Commercial Sales	Silver	10	Silver	7	1,903.83	\$13,326.82
APAC Cruises	Gold-Fast	12	Gold-Fast	12	730.20	\$8,762.44
African Tours	Gold	12	Gold	10	4,856.12	\$48,561.16
African Tours	Silver	10	Silver	7	1,480.85	\$10,365.93
CRM	Bronze	3	Bronze	3	5,689.08	\$17,067.23
Caribbean	Gold	12	Gold	10	4,590.41	\$45,904.08
Commercial Applications	Bronze	3	Bronze	3	14,312.88	\$42,938.64
Commercial Applications	Gold-Fast	12	Gold-Fast	12	40,308.42	\$483,701.05
Commercial Environments	Bronze	3	Bronze	3	16,812.27	\$50,436.81
Commercial Environments	Gold	12	Gold	10	9,313.51	\$93,135.13
Commercial Environments	Silver	10	Silver	7	1,480.79	\$10,365.54
Concur	Gold	12	Gold	10	247.39	\$2,473.91
Concur	Gold-Fast	12	Gold-Fast	12	575.17	\$6,902.09
Consumer Feedback	Gold	12	Gold	10	1,335.89	\$13,358.94

Copyright information

Copyright © 2024 NetApp, Inc. All Rights Reserved. Printed in the U.S. No part of this document covered by copyright may be reproduced in any form or by any means—graphic, electronic, or mechanical, including photocopying, recording, taping, or storage in an electronic retrieval system—without prior written permission of the copyright owner.

Software derived from copyrighted NetApp material is subject to the following license and disclaimer:

THIS SOFTWARE IS PROVIDED BY NETAPP “AS IS” AND WITHOUT ANY EXPRESS OR IMPLIED WARRANTIES, INCLUDING, BUT NOT LIMITED TO, THE IMPLIED WARRANTIES OF MERCHANTABILITY AND FITNESS FOR A PARTICULAR PURPOSE, WHICH ARE HEREBY DISCLAIMED. IN NO EVENT SHALL NETAPP BE LIABLE FOR ANY DIRECT, INDIRECT, INCIDENTAL, SPECIAL, EXEMPLARY, OR CONSEQUENTIAL DAMAGES (INCLUDING, BUT NOT LIMITED TO, PROCUREMENT OF SUBSTITUTE GOODS OR SERVICES; LOSS OF USE, DATA, OR PROFITS; OR BUSINESS INTERRUPTION) HOWEVER CAUSED AND ON ANY THEORY OF LIABILITY, WHETHER IN CONTRACT, STRICT LIABILITY, OR TORT (INCLUDING NEGLIGENCE OR OTHERWISE) ARISING IN ANY WAY OUT OF THE USE OF THIS SOFTWARE, EVEN IF ADVISED OF THE POSSIBILITY OF SUCH DAMAGE.

NetApp reserves the right to change any products described herein at any time, and without notice. NetApp assumes no responsibility or liability arising from the use of products described herein, except as expressly agreed to in writing by NetApp. The use or purchase of this product does not convey a license under any patent rights, trademark rights, or any other intellectual property rights of NetApp.

The product described in this manual may be protected by one or more U.S. patents, foreign patents, or pending applications.

LIMITED RIGHTS LEGEND: Use, duplication, or disclosure by the government is subject to restrictions as set forth in subparagraph (b)(3) of the Rights in Technical Data -Noncommercial Items at DFARS 252.227-7013 (FEB 2014) and FAR 52.227-19 (DEC 2007).

Data contained herein pertains to a commercial product and/or commercial service (as defined in FAR 2.101) and is proprietary to NetApp, Inc. All NetApp technical data and computer software provided under this Agreement is commercial in nature and developed solely at private expense. The U.S. Government has a non-exclusive, non-transferrable, nonsublicensable, worldwide, limited irrevocable license to use the Data only in connection with and in support of the U.S. Government contract under which the Data was delivered. Except as provided herein, the Data may not be used, disclosed, reproduced, modified, performed, or displayed without the prior written approval of NetApp, Inc. United States Government license rights for the Department of Defense are limited to those rights identified in DFARS clause 252.227-7015(b) (FEB 2014).

Trademark information

NETAPP, the NETAPP logo, and the marks listed at <http://www.netapp.com/TM> are trademarks of NetApp, Inc. Other company and product names may be trademarks of their respective owners.