



MetroCluster switchover and switchback

System Manager Classic

NetApp
April 09, 2024

This PDF was generated from https://docs.netapp.com/us-en/ontap-sm-classic/online-help-96-97/concept_metrocluster_switchover_switchback_workflow.html on April 09, 2024. Always check docs.netapp.com for the latest.

Table of Contents

- MetroCluster switchover and switchback 1
 - About MetroCluster switchover and switchback 1
 - Prepare for switchover and switchback operations 3
 - Performing a negotiated switchover 4
 - Performing a unplanned switchover 5
 - Performing a switchback 6
 - MetroCluster Switchover and Switchback Operations window 7

MetroCluster switchover and switchback

About MetroCluster switchover and switchback

Beginning with ONTAP System Manager 9.6, you can use MetroCluster switchover and switchback operations after a disaster that renders all the nodes in the source cluster unreachable and powered off. You can also use the switchover workflow for a negotiated (planned) switchover in cases such as disaster recovery testing or a site going offline for maintenance.

About MetroCluster switchover and switchback

Beginning with System Manager 9.6, you can use MetroCluster switchover and switchback operations to allow one cluster site to take over the tasks of another cluster site. This capability allows you to facilitate maintenance or recovery from disasters.

A switchover operation allows one cluster (Site A) to take over the tasks that another cluster (Site B) usually performs. After the switchover, the cluster that has been taken over (Site B) can be brought down for maintenance and repairs. After the maintenance is completed, Site B can come up and healing tasks are completed, then you can initiate a switchback operation that allows the repaired cluster (Site B) to resume the tasks it usually performs.

System Manager supports two kinds of switchover operations, based on the status of the remote cluster site:

- A negotiated (planned) switchover: You initiate this operation when you need to do planned maintenance on a cluster or test your disaster recovery procedures.
- An unplanned switchover: You initiate this operation when a disaster has occurred on a cluster (Site B) and you want another site or cluster (Site A) to take over the tasks of the cluster affected by the disaster (Site B) while you perform repairs and maintenance.

You perform the same steps in System Manager for both switchover operations. When you initiate a switchover, System Manager determines whether the operation is feasible and aligns the workload accordingly.

MetroCluster switchover and switchback workflow

The overall process for switchover and switchback workflow includes the following three phases:

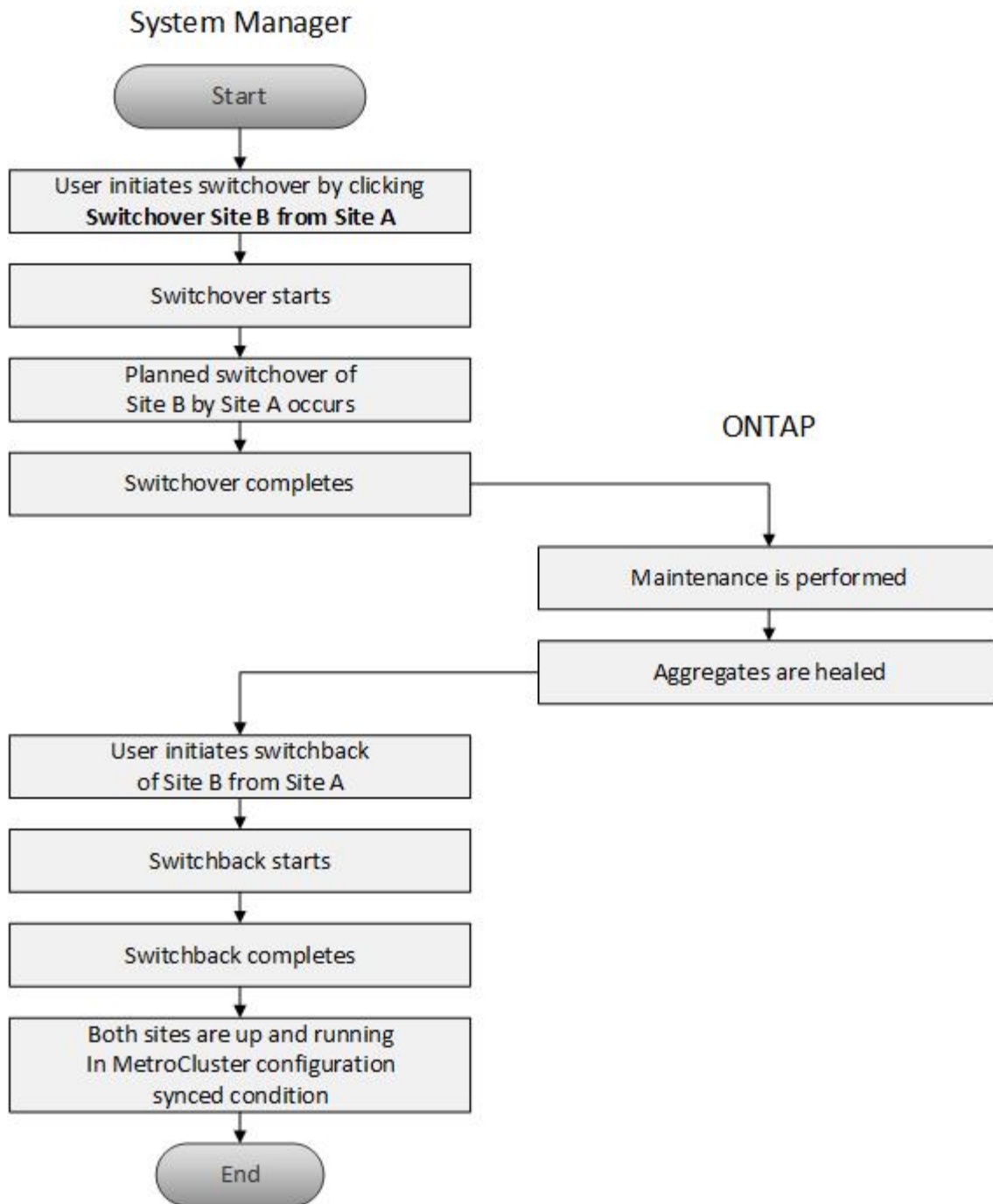
1. **Switchover:** The switchover process allows you to transfer control of the storage and client access from a source cluster site (Site B) to another cluster site (Site A). This operation helps you provide nondisruptive operations during testing and maintenance. In addition, this process also enables you to recover from a site failure. For disaster recovery testing or planned site maintenance, you can perform a MetroCluster switchover to transfer control to a disaster recovery (DR) site (Site A). Before you start the process, at least one of the surviving site nodes must be up and running before you perform the switchover. If a switchover operation previously failed on certain nodes on the DR site, the operation can be retried on all of those nodes.
2. **Site B Operations:** After switchover is completed, System Manager completes the healing process for the MetroCluster IP configuration. Healing is a planned event, which gives you full control of each step to minimize downtime. Healing is a two-phase process that occurs on the storage and controller components to prepare the nodes at the repaired site for the switchback process. During the first phase, the process heals the aggregates by resynchronizing the mirrored plexes and then heals the root aggregates by switching them back to the disaster site.

In the second phase, the site is made ready for the switchback process.

3. **Switchback:** After maintenance and repairs are performed on Site B, you initiate the switchback operation to return control of the storage and client access from Site A to Site B. For a successful switchback, the following conditions must exist:
 - The home nodes and storage shelves must be powered on and reachable by nodes in Site A.
 - System Manager must have successfully completed the healing phase before you can initiate the switchback operation.
 - All the aggregates in Site A should be in mirrored status and cannot be in degraded or resyncing status.
 - All previous configuration changes must be complete before performing a switchback operation. This prevents those changes from competing with the negotiated switchover or switchback operation.

MetroCluster switchover and switchback workflow flowchart

The following flowchart illustrates the phases and processes that occur when you initiate switchover and switchback operations.



Prepare for switchover and switchback operations

Before you perform switchover operations using ONTAP System Manager classic 9.6, you should verify that the necessary steps have been performed on the affected site.

Steps

1. If you are recovering from a disaster on Site B, you must perform the following steps:
 - a. Repair or replace any damaged disks or hardware.
 - b. Restore power.
 - c. Rectify error issues that occur.

- d. Bring up the disaster site.
2. Ensure the following conditions exist in your cluster:
 - Both sites are in Active state if you are performing a planned switchover.
 - The MetroCluster system uses configuration type “IP_Fabric”.
 - Both sites are operating with a two-node configuration (two nodes in each cluster). Sites with a single-node or four-node configuration are not supported for switchover and switchback operations using System Manager.
3. If you are launching the remote site (Site B) from the local site (Site A), ensure that Site B is running System Manager 9.6 or a later version.

Rename the MetroCluster local site (Site A) with System Manager - ONTAP 9.7 and earlier

You can use ONTAP System Manager classic (available in ONTAP 9.7 and earlier) to rename the MetroCluster local site (Site A) in a cluster.

Steps

1. Click **Configuration > Configuration Updates**.
2. Click **Update cluster name**.
3. Update the name in the text box, then click **Submit**.

You can view the updated name when the MetroCluster Site A status is displayed.

4. To display the updated name of MetroCluster Site A when viewing it from the remote site (Site B), execute the following command within the CLI on the remote site (Site B): `cluster peer modify-local-name`

Performing a negotiated switchover

Beginning with System Manager 9.6, you can initiate a negotiated (planned) switchover of a MetroCluster site. This operation is useful when you want to perform disaster recovery testing or planned maintenance on the site.

Steps

1. In System Manager, use the cluster administrator credentials to log on to the local MetroCluster site (Site A).
2. Click **Configuration > MetroCluster**

The MetroCluster Switchover/Switchback Operations window displays.

3. Click **Next**.

The MetroCluster Switchover and Switchback Operations window displays the status of the operations, and System Manager verifies whether a negotiated switchover is possible.

4. Perform one of the following substeps when the validation process has completed:
 - If validation is successful, proceed to Step 5.
 - If validation fails, but Site B is up, then an error has occurred, such as a problem with a subsystem or NVram mirroring is not synchronized. You can perform either of the following processes:

- Fix the issue that is causing the error, click **Close**, and then start again at Step 1.
- Halt the Site B nodes, click **Close**, and then perform the steps in [Performing an unplanned switchover](#).
 - If validation fails, and Site B is down, then most likely there is a connection problem. Verify that Site B is really down, then perform the steps in [Performing an unplanned switchover](#).

5. Click **Switchover from Site B to Site A** to initiate the switchover process.

A warning message displays, warning you that the switchover operation stops all data SVMs on Site B and restarts them on Site A.

6. If you want to proceed, click **Yes**.

The switchover process begins. The states of Site A and Site B are displayed above the graphic representations of their configurations. If the switchover operation fails, an error message displays. Click **Close**. Correct any errors and start again at Step 1.

7. Wait until System Manager shows that healing has been completed.

When healing is completed, Site B is operational, and systems prepare for the switchback process.

When the preparations for the switchback process are complete, the **Switchback from Site A to Site B** button is active at the bottom of the window.

8. To proceed with the switchback operation, perform the steps in [Performing a switchback](#).

Performing a unplanned switchover

Beginning with System Manager 9.6, you can initiate an unplanned switchover of a MetroCluster site. This operation is useful after an outage event or disaster event.

Before you begin

Your MetroCluster is running in normal operating condition; however, the nodes in the local cluster (Site A) are up, but the nodes in the remote cluster (Site B) are down.

Steps

1. Verify that Site B is actually down.

A connection error might make Site B appear to be down.



Starting the switchover process with Site B up could cause disastrous results.

2. In System Manager, log on to the local MetroCluster site (Site A) using the cluster administrator credentials.

3. Click **Configuration > MetroCluster**

The MetroCluster Switchover/Switchback Operations window displays.

4. Click **Next**.

The MetroCluster Switchover/Switchback Operations window displays the status of the operations, and System Manager verifies whether a negotiated switchover is feasible.

5. When the validation process is complete, click **Switchover Site B to Site A** to initiate the switchover process.

A warning message displays, warning you that the switchover operation switches control from Site B to Site A. The status of Site B should be “UNREACHABLE”, and all Site B nodes are shown in red text.



As noted in Step 1, Site B must actually be down and not just unconnected. Also, you should be aware that the switchover operation might cause data loss.

6. If you want to proceed, ensure the check box is checked, and then click **Yes**.

The switchover process begins. The states of Site A and Site B are displayed above the graphic representations of their configurations. If the switchover operation fails, an error message displays. Click **Close**. Correct any errors and start again at Step 1

7. Perform all required maintenance activities for Site B.
8. Ensure Site B is up.

The healing process begins. When System Manager shows the healing is completed, Site B is operational and the systems prepare for the switchback process. The **Switchback from Site A to Site B** button appears at the bottom of the window.

9. Proceed to [Performing a switchback](#) to initiate the switchback operation.

Performing a switchback

Beginning with System Manager 9.6, you can perform a switchback operation that restores control to the original MetroCluster site (Site B) after the system has completed a successful switchover operation.

Before you begin

Before you perform a switchback operation, you must complete the following tasks:

- You must prepare the MetroCluster sites by [Performing a negotiated \(planned\) switchover](#) or [Performing an unplanned switchover](#).
- If errors occurred during the healing operation, you must follow the displayed instructions to fix them.
- If the state of the remote site is displayed as “Getting ready for switchback”, then the aggregates are still resynchronizing. You should wait until the status of the remote site indicates that it is ready for switchback.

About this task

If a switchover operation is successful, the MetroCluster Switchover and Switchback Operations window displays. The window shows the status of both sites and provides a message that tells you the operation was successful.

Steps

1. Click **Switchback from Site A to Site B** to initiate the switchback operation.

A warning message tells you that the switchback operation is returning MetroCluster control to Site B and that the process might take some time.

2. If you want to proceed, click **Yes**.

3. Perform one of the following substeps when the switchback process has completed:

- If the switchback operation is successful, click **Done** to acknowledge the completion of MetroCluster operations.



Until you acknowledge the completion of the switchback operation, System Manager continues to display a message that the operation has completed. You cannot initiate another operation or monitor subsequent switchover or switchback operations until you acknowledge the completion of the switchback operation.

- If the switchback operation is not successful, error messages display at the top of the status area. Make corrections if needed, and click **Switchback from Site A to Site B** to retry the process.

MetroCluster Switchover and Switchback Operations window

Beginning with System Manager 9.6, you can use the MetroCluster Switchover and Switchback Operations window to initiate a negotiated (planned) switchover or an unplanned switchover from one site or cluster (Site B) to another site or cluster (Site A). After you perform maintenance or repairs on Site B, you can initiate a switchback from Site A to Site B and view the status of the operation in this window.

Command Buttons

- **Switchover Site B to Site A**

Initiates the process that switches Site B over to Site A.

- **Switchback Site A to Site B**

Initiates the process that switches Site A back to Site B.

Other actions

- **Navigate to Site B cluster**

Enter the cluster management IP address of Site B.

- **Checkbox for unplanned switchover**

If you want to initiate an unplanned switchover, check the box labeled **Continue with unplanned switchover**.

Status areas

As the system progresses through the process of switching over or switching back, System Manager displays status with the following methods:

- **Progress line graphic**

Displays phases of the operations and indicates the phases that have been completed. The phases are

Switchover, Site B Operations, and Switchback.

- **Show Details**

Displays a list of time-stamped system events as the MetroCluster operations progress.

- **Local: Site A**

Displays a graphic of the configuration of the cluster at Site A, including the status of that site as it progresses through the phases of the operation.

- **Remote: Site B**

Displays a graphic of the configuration of the cluster at Site B, including the status of that site as it progresses through the phases of the operation.

If you log in to Site B and view the MetroCluster Switchover and Switchback Operations window, then the status of Site A is shown as “INACTIVE” and the status of Site B is shown as “SWITCHOVER MODE”.

Copyright information

Copyright © 2024 NetApp, Inc. All Rights Reserved. Printed in the U.S. No part of this document covered by copyright may be reproduced in any form or by any means—graphic, electronic, or mechanical, including photocopying, recording, taping, or storage in an electronic retrieval system—without prior written permission of the copyright owner.

Software derived from copyrighted NetApp material is subject to the following license and disclaimer:

THIS SOFTWARE IS PROVIDED BY NETAPP “AS IS” AND WITHOUT ANY EXPRESS OR IMPLIED WARRANTIES, INCLUDING, BUT NOT LIMITED TO, THE IMPLIED WARRANTIES OF MERCHANTABILITY AND FITNESS FOR A PARTICULAR PURPOSE, WHICH ARE HEREBY DISCLAIMED. IN NO EVENT SHALL NETAPP BE LIABLE FOR ANY DIRECT, INDIRECT, INCIDENTAL, SPECIAL, EXEMPLARY, OR CONSEQUENTIAL DAMAGES (INCLUDING, BUT NOT LIMITED TO, PROCUREMENT OF SUBSTITUTE GOODS OR SERVICES; LOSS OF USE, DATA, OR PROFITS; OR BUSINESS INTERRUPTION) HOWEVER CAUSED AND ON ANY THEORY OF LIABILITY, WHETHER IN CONTRACT, STRICT LIABILITY, OR TORT (INCLUDING NEGLIGENCE OR OTHERWISE) ARISING IN ANY WAY OUT OF THE USE OF THIS SOFTWARE, EVEN IF ADVISED OF THE POSSIBILITY OF SUCH DAMAGE.

NetApp reserves the right to change any products described herein at any time, and without notice. NetApp assumes no responsibility or liability arising from the use of products described herein, except as expressly agreed to in writing by NetApp. The use or purchase of this product does not convey a license under any patent rights, trademark rights, or any other intellectual property rights of NetApp.

The product described in this manual may be protected by one or more U.S. patents, foreign patents, or pending applications.

LIMITED RIGHTS LEGEND: Use, duplication, or disclosure by the government is subject to restrictions as set forth in subparagraph (b)(3) of the Rights in Technical Data -Noncommercial Items at DFARS 252.227-7013 (FEB 2014) and FAR 52.227-19 (DEC 2007).

Data contained herein pertains to a commercial product and/or commercial service (as defined in FAR 2.101) and is proprietary to NetApp, Inc. All NetApp technical data and computer software provided under this Agreement is commercial in nature and developed solely at private expense. The U.S. Government has a non-exclusive, non-transferrable, nonsublicensable, worldwide, limited irrevocable license to use the Data only in connection with and in support of the U.S. Government contract under which the Data was delivered. Except as provided herein, the Data may not be used, disclosed, reproduced, modified, performed, or displayed without the prior written approval of NetApp, Inc. United States Government license rights for the Department of Defense are limited to those rights identified in DFARS clause 252.227-7015(b) (FEB 2014).

Trademark information

NETAPP, the NETAPP logo, and the marks listed at <http://www.netapp.com/TM> are trademarks of NetApp, Inc. Other company and product names may be trademarks of their respective owners.