



Volume restore management using SnapVault

System Manager Classic

NetApp
July 01, 2022

Table of Contents

- Volume restore management using SnapVault 1
- Volume restore using SnapVault overview 1
- Volume restore workflow 1

Volume restore management using SnapVault

Volume restore using SnapVault overview

You can quickly restore a volume from a SnapVault backup in ONTAP when there is a data loss.

Use this procedure if you want to restore from the vault backup in the following way:

- You are working with clusters running ONTAP 9.
- You are a cluster administrator.
- You have configured the vault relationship following the procedure described in [Volume backup using SnapVault](#)
- You do not want to perform a single file or LUN restore.
- You want to use best practices, not explore every available option.
- You do not want to read a lot of conceptual background.
- You want to use the System Manager classic interface for ONTAP 9.7 and earlier releases, not the ONTAP System Manager UI for ONTAP 9.7 and later.

If these assumptions are not correct for your situation, or if you want more conceptual background information, you should see the following resource:

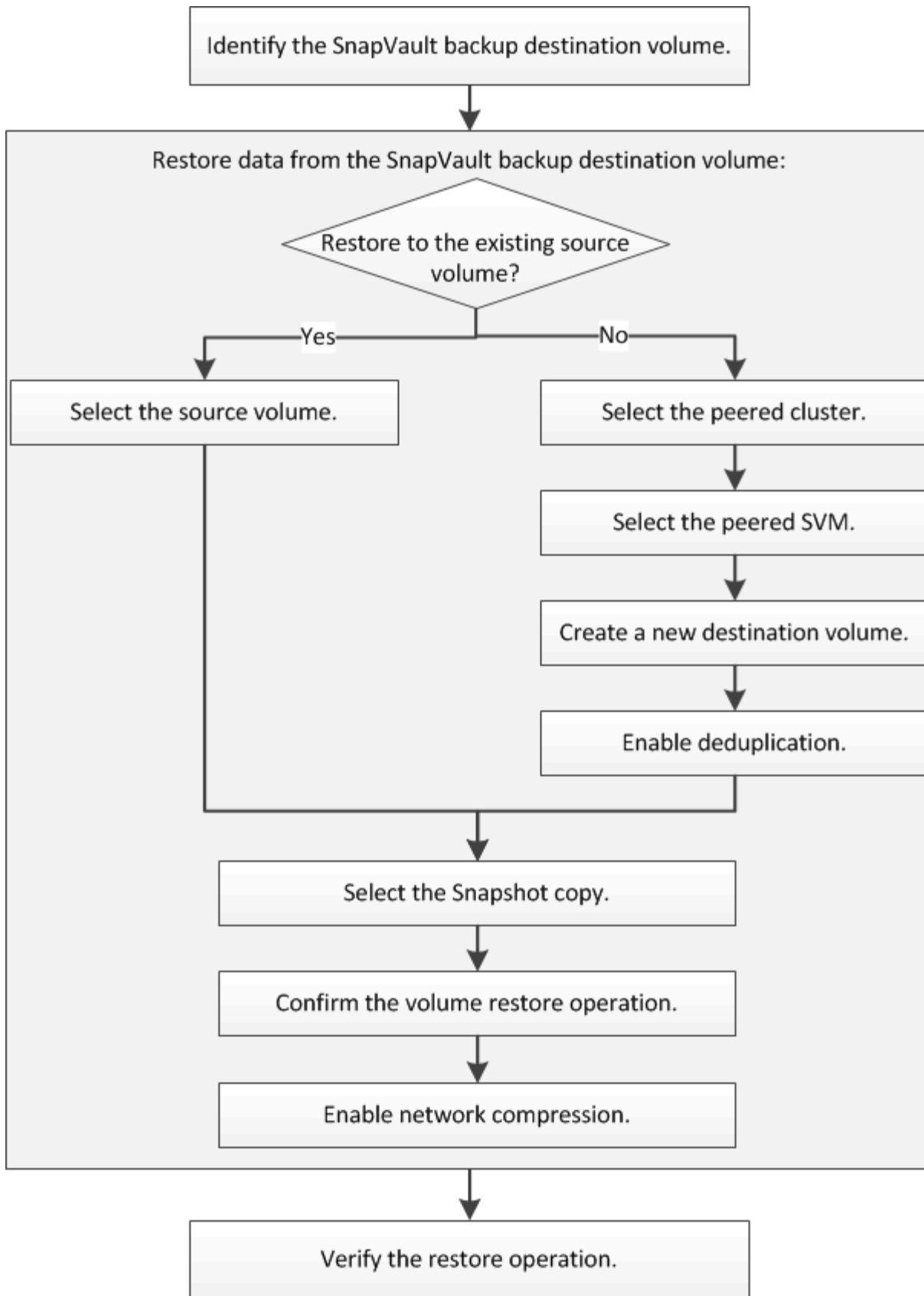
[NetApp Technical Report 4183: SnapVault Best Practices](#)

Other ways to do this in ONTAP

To perform these tasks with...	See this content...
The redesigned System Manager (available with ONTAP 9.7 and later)	Restore a volume from an earlier Snapshot copy
The ONTAP command line interface	Restore the contents of a volume from a SnapMirror destination

Volume restore workflow

When your source volume is unavailable or data is corrupted, you can perform a restore from a SnapVault backup. Restoring a volume from a SnapVault backup involves selecting the SnapVault destination volume, restoring either to a new volume or existing volume, and verifying the restore operation.



Additional information is available to help you to manage the SnapVault backup relationships and to use other methods of data protection to protect the availability of your data resources.

- [Volume disaster recovery preparation](#)

Describes how to quickly configure a destination volume on a different ONTAP cluster in preparation for disaster recovery.

- [Volume disaster recovery](#)

Describes how to quickly activate a destination volume from a different ONTAP cluster after a disaster, as well as how to restore the SnapMirror relationship to its original state by reactivating the source volume after its recovery.

Identify the SnapVault backup destination volume

You must identify the SnapVault backup destination volume from which you want to restore data when the data in the source volume is corrupted or lost.

About this task

You must perform this task from the **source** cluster.

Steps

1. Enter the URL `https://IP-address-of-cluster-management-LIF` in a web browser and log in to System Manager using your cluster administrator credential.
2. Navigate to the **Volumes** window.
3. Identify the destination volume in the SnapVault relationship and the name of the SVM that contains the volume:
 - ONTAP 9.3 or later: Double-click the volume to view the details, and then click **PROTECTION**.
 - ONTAP 9.2 or earlier: Click the **Data Protection** tab at the bottom of the Volumes window.

Restore data from a SnapVault backup

After selecting the SnapVault backup destination volume, you must perform the restore operation either to a new volume to test the backed-up data or to an existing volume to restore the lost or corrupted data.

About this task

You must perform this task from the **destination** cluster.

Steps

1. Depending on the System Manager version that you are running, perform one of the following steps:
 - ONTAP 9.4 or earlier: Click **Protection > Relationships**.
 - Beginning with ONTAP 9.5: Click **Protection > Volume Relationships**.
2. Select the SVM that contains the SnapVault backup destination volume, and then click **Operations > Restore**.
3. In the **Restore** dialog box, restore the data to the original source volume or a new volume:

If you want to restore to...	Then...
The original source volume	Select Source volume .

If you want to restore to...	Then...
A new volume	<ol style="list-style-type: none"> a. Select Other volume. b. Select the peered cluster and the peered SVM for the volume. c. Select a peered SVM from the list. d. If the SVM is not peered, create the SVM peer relationship: <ol style="list-style-type: none"> i. Select the SVM. ii. Click Authenticate. iii. Enter the cluster administrator's credentials of the peered cluster, and then click Create. e. Select New Volume. f. If you want to change the default name, displayed in the format <code>destination_SVM_name_destination_volume_name_restore</code>, specify a new name and select the containing aggregate for the volume. g. Select the Enable dedupe check box.

Restore to _____

Source volume
 Other volume

? Cluster:

Storage Virtual Machine: ?

Volume: New Volume Select Volume

Volume name:
Aggregate:

Enable dedupe
517.22 GB available (of 520.28 GB)

4. Select either the latest Snapshot copy or select a specific Snapshot copy that you want to restore.
5. Select the **OK to restore the volume from the Snapshot copy** check box.
6. Select the **Enable Network Compression** check box to compress the data that is being transferred during the restore operation.
7. Click **Restore**.

During the restore process, the volume being restored is changed to read-only. After the restore operation finishes, the temporary relationship is removed and the restored volume is changed to read/write.



8. Click **OK** in the message box.

Verify the restore operation

After performing the restore operation from the SnapVault backup destination volume, you must verify the status of the restore operation on the source cluster.

About this task

You must perform this task from the **source** cluster.

Steps

1. Navigate to the **Volumes** window.
2. Select the source volume in the volumes list and perform one of the following actions, depending on your ONTAP version:
 - Beginning with ONTAP 9.3: Double-click the source volume to view the details, and then click **PROTECTION** to identify the destination volume in the SnapMirror relationship and the name of the SVM that contains the volume.
 - ONTAP 9.2 or earlier: Click the **Data Protection** bottom tab to identify the destination volume in the SnapMirror relationship and the name of the SVM that contains the volume. The Type field displays *Restore* temporarily. After the restore operation is completed, the field displays *Vault*.

You should troubleshoot any issues in the SnapVault relationships. The troubleshooting procedures for SnapMirror relationships are also applicable to SnapVault relationships.

[NetApp Technical Report 4015: SnapMirror Configuration and Best Practices for ONTAP 9.1, 9.2](#)

Copyright Information

Copyright © 2022 NetApp, Inc. All rights reserved. Printed in the U.S. No part of this document covered by copyright may be reproduced in any form or by any means-graphic, electronic, or mechanical, including photocopying, recording, taping, or storage in an electronic retrieval system- without prior written permission of the copyright owner.

Software derived from copyrighted NetApp material is subject to the following license and disclaimer:

THIS SOFTWARE IS PROVIDED BY NETAPP "AS IS" AND WITHOUT ANY EXPRESS OR IMPLIED WARRANTIES, INCLUDING, BUT NOT LIMITED TO, THE IMPLIED WARRANTIES OF MERCHANTABILITY AND FITNESS FOR A PARTICULAR PURPOSE, WHICH ARE HEREBY DISCLAIMED. IN NO EVENT SHALL NETAPP BE LIABLE FOR ANY DIRECT, INDIRECT, INCIDENTAL, SPECIAL, EXEMPLARY, OR CONSEQUENTIAL DAMAGES (INCLUDING, BUT NOT LIMITED TO, PROCUREMENT OF SUBSTITUTE GOODS OR SERVICES; LOSS OF USE, DATA, OR PROFITS; OR BUSINESS INTERRUPTION) HOWEVER CAUSED AND ON ANY THEORY OF LIABILITY, WHETHER IN CONTRACT, STRICT LIABILITY, OR TORT (INCLUDING NEGLIGENCE OR OTHERWISE) ARISING IN ANY WAY OUT OF THE USE OF THIS SOFTWARE, EVEN IF ADVISED OF THE POSSIBILITY OF SUCH DAMAGE.

NetApp reserves the right to change any products described herein at any time, and without notice. NetApp assumes no responsibility or liability arising from the use of products described herein, except as expressly agreed to in writing by NetApp. The use or purchase of this product does not convey a license under any patent rights, trademark rights, or any other intellectual property rights of NetApp.

The product described in this manual may be protected by one or more U.S. patents, foreign patents, or pending applications.

RESTRICTED RIGHTS LEGEND: Use, duplication, or disclosure by the government is subject to restrictions as set forth in subparagraph (c)(1)(ii) of the Rights in Technical Data and Computer Software clause at DFARS 252.277-7103 (October 1988) and FAR 52-227-19 (June 1987).

Trademark Information

NETAPP, the NETAPP logo, and the marks listed at <http://www.netapp.com/TM> are trademarks of NetApp, Inc. Other company and product names may be trademarks of their respective owners.