



iSCSI configuration and provisioning workflow

System Manager Classic

NetApp
July 01, 2022

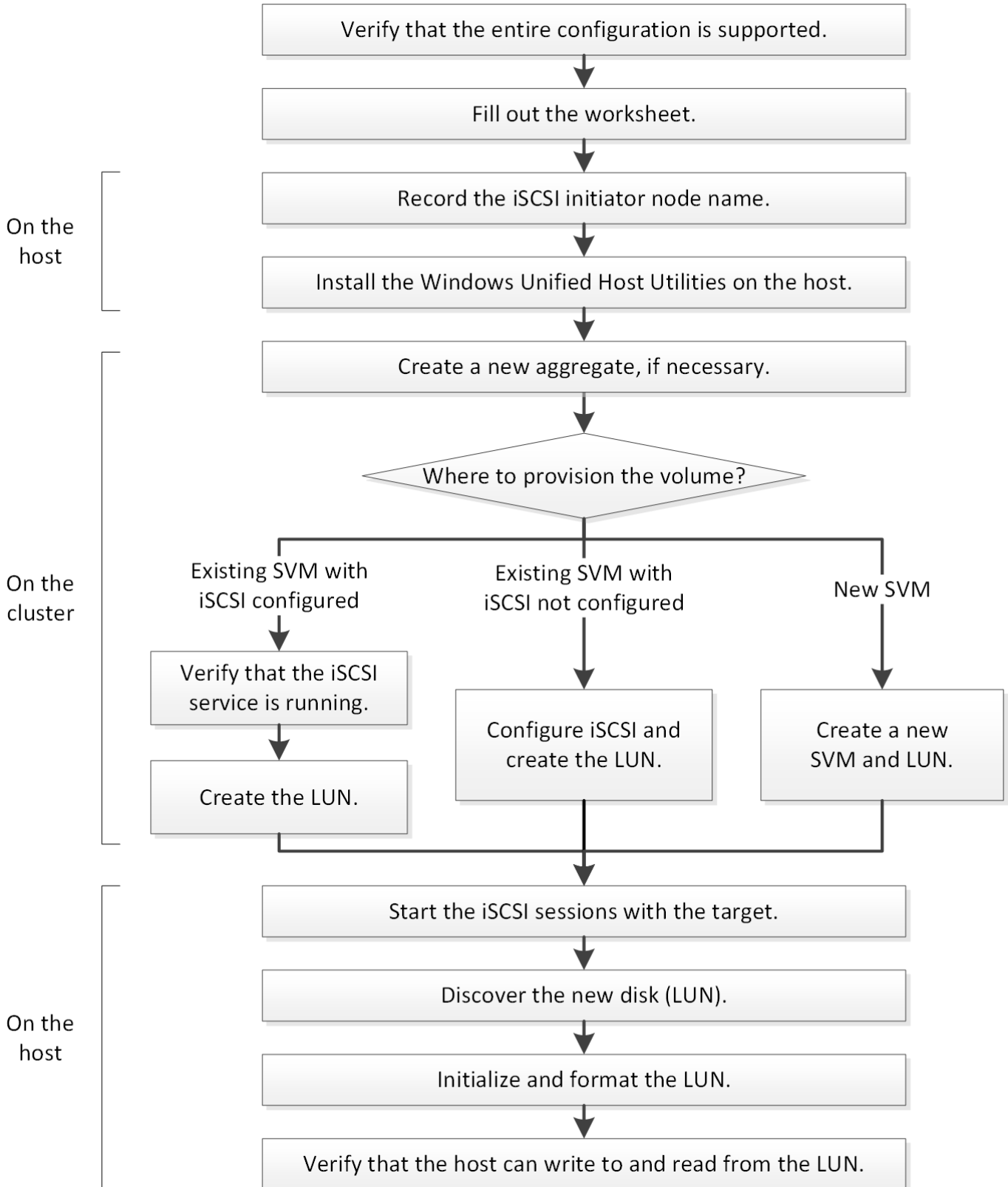
This PDF was generated from https://docs.netapp.com/us-en/ontap-sm-classic/iscsi-config-windows/task_verifying_that_iscsi_fc_configuration_is_supported.html on July 01, 2022. Always check docs.netapp.com for the latest.

Table of Contents

- iSCSI configuration and provisioning workflow 1
 - Verify that the iSCSI configuration is supported..... 2
 - Complete the iSCSI configuration worksheet..... 2
 - Record the iSCSI initiator node name 4
 - Install Windows Unified Host Utilities 5
 - Create an aggregate 6
 - Decide where to provision the volume 6
 - Start iSCSI sessions with the target..... 13
 - Discover new disks 15
 - Initialize and format the LUN 15
 - Verify that the host can write to and read from the LUN 16

iSCSI configuration and provisioning workflow

When you make storage available to a host using iSCSI, you provision a volume and LUN on the storage virtual machine (SVM), and then connect to the LUN from the host.



Verify that the iSCSI configuration is supported

For reliable operation, you must verify that the entire iSCSI configuration is supported.

Steps

1. Go to the Interoperability Matrix to verify that you have a supported combination of the following components:
 - ONTAP software
 - Host computer CPU architecture (for standard rack servers)
 - Specific processor blade model (for blade servers)
 - Storage protocol (iSCSI)
 - Windows operating system version
 - Windows Unified Host Utilities
2. Click the configuration name for the selected configuration.

Details for that configuration are displayed in the Configuration Details window.

3. Review the information in the following tabs:

- Notes

Lists important alerts and information that are specific to your configuration.

Review the alerts to identify the hotfixes that are required for your operating system.

- Policies and Guidelines

Provides general guidelines for all SAN configurations.

Complete the iSCSI configuration worksheet

You require iSCSI identifiers, network addresses, and storage configuration information to perform iSCSI configuration tasks.

iSCSI identifiers

Initiator (host) iSCSI node name (IQN)
Target alias (optional)

Target network addresses

The storage virtual machine (SVM) is the iSCSI target.

You require a subnet with two IP addresses for iSCSI data LIFs for each node in the cluster. There should be two separate networks for high availability. The specific IP addresses are assigned by ONTAP when you create the LIFs as part of creating the SVM.

If possible, separate iSCSI traffic on separate physical networks or on VLANs.

Subnet for LIFs:

Node or LIF with port to switch	IP address	Network mask	Gateway	VLAN ID	Home port
Node 1 / LIF to switch 1					
Node 2 / LIF to switch 1					
Node 3 / LIF to switch 1					
Node 4 / LIF to switch 1					
Node 1 / LIF to switch 2					
Node 2 / LIF to switch 2					
Node 3 / LIF to switch 2					
Node 4 / LIF to switch 2					

Storage configuration

If the aggregate and SVM are already created, record their names here; otherwise, you can create them as required:

Node to own LUN
Aggregate name
SVM name

LUN information

LUN size
Host operating system
LUN name (optional)
LUN description (optional)

SVM information

If you are not using an existing SVM, you require the following information to create a new one:

SVM name	
SVM IPspace	
Aggregate for SVM root volume	
SVM user name (optional)	
SVM password (optional)	
SVM management LIF (optional)	
	Subnet:
	IP address:
	Network mask:
	Gateway:
	Home node:
	Home port:

Record the iSCSI initiator node name

You must record the iSCSI initiator node name from the iSCSI initiator program on the Windows host.

Steps

1. Open the **iSCSI Initiator Properties** dialog box:

If you are using...	Navigate to...
Windows Server 2012 or Windows Server 2012 R2 or Windows Server 2016	Server Manager > Dashboard > Tools > iSCSI Initiator > Configuration
Windows Server 2008, Windows Server 2008 R2	Start > Administrative Tools > iSCSI Initiator

2. Copy the **Initiator Name** or **Initiator Node Name** value to a text file or write it down.

The exact label in the dialog box differs depending on the Windows version. The iSCSI initiator node name should look like the following example:

```
iqn.1991-05.com.microsoft:server3
```

Install Windows Unified Host Utilities

Windows Unified Host Utilities includes an installation program that sets the required Windows registry and HBA parameters so that the Windows host correctly handles the storage system behaviors for NetApp ONTAP and E-Series platforms.

Before you begin

You must have completed the following tasks:

- Check the supported configuration in the Interoperability Matrix

[NetApp Interoperability Matrix Tool](#)

- Identified any required Windows hotfixes from the Interoperability Matrix

[NetApp Interoperability Matrix Tool](#)

- Add the FCP license and start the target service
- Verify your cabling

See *SAN Configuration* for your version of ONTAP or *Hardware Cabling* for your E-Series storage system on the NetApp Support Site for detailed cabling and configuration information.

About this task

You must specify whether to include multipathing support when you install the Windows Unified Host Utilities software package. Choose MPIO if you have more than one path from the Windows host or virtual machine to the storage system. Choose no MPIO only if you are using a single path to the storage system.



The MPIO selection is not available for Windows XP and Windows Vista systems; multipath I/O is not supported on these guest operating systems.

For Hyper-V guests, raw (pass-through) disks do not appear in the guest OS if you choose multipathing support. You can either use raw disks, or you can use MPIO, but you cannot use both in the guest OS.

See [Windows Unified Host Installation](#) for detailed information.

Steps

1. Download the appropriate version of the Windows Unified Host Utilities from the NetApp Support Site.

[NetApp Support](#)

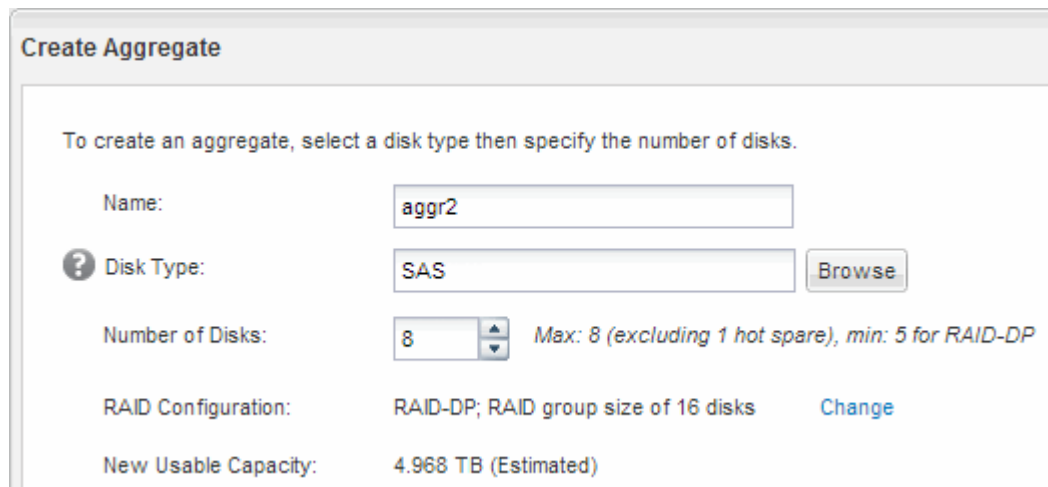
2. Run the executable file and follow the instructions on the screen.
3. Reboot the Windows host when prompted.

Create an aggregate

If you do not want to use an existing aggregate, you can create a new aggregate to provide physical storage to the volume which you are provisioning.

Steps

1. Enter the URL `https://IP-address-of-cluster-management-LIF` in a web browser and log in to System Manager using your cluster administrator credential.
2. Navigate to the **Aggregates** window.
3. Click **Create**.
4. Follow the instructions on the screen to create the aggregate using the default RAID-DP configuration, and then click **Create**.



Create Aggregate

To create an aggregate, select a disk type then specify the number of disks.

Name:

? Disk Type:

Number of Disks: Max: 8 (excluding 1 hot spare), min: 5 for RAID-DP

RAID Configuration: RAID-DP; RAID group size of 16 disks

New Usable Capacity: 4.968 TB (Estimated)

Results

The aggregate is created with the specified configuration and added to the list of aggregates in the Aggregates window.

Decide where to provision the volume

Before you provision a volume to contain your LUNs, you need to decide whether to add the volume to an existing storage virtual machine (SVM) or to create a new SVM for the volume. You might also need to configure iSCSI on an existing SVM.

About this task

If an existing SVM is already configured with the needed protocols and has LIFs that can be accessed from the host, it is easier to use the existing SVM.

You can create a new SVM to separate data or administration from other users of the storage cluster. There is no advantage to using separate SVMs just to separate different protocols.

Procedure

- If you want to provision volumes on an SVM that is already configured for iSCSI, you must verify that the iSCSI service is running and then create a LUN on the SVM.

[Verifying that the iSCSI service is running on an existing SVM](#)

[Creating a LUN](#)

- If you want to provision volumes on an existing SVM that has iSCSI enabled but not configured, configure iSCSI on the existing SVM.

[Configuring iSCSI on an existing SVM](#)

This is the case when you did not follow this procedure to create the SVM while configuring a different protocol.

- If you want to provision volumes on a new SVM, create the SVM.

[Creating a new SVM](#)

Verify that the iSCSI service is running on an existing SVM

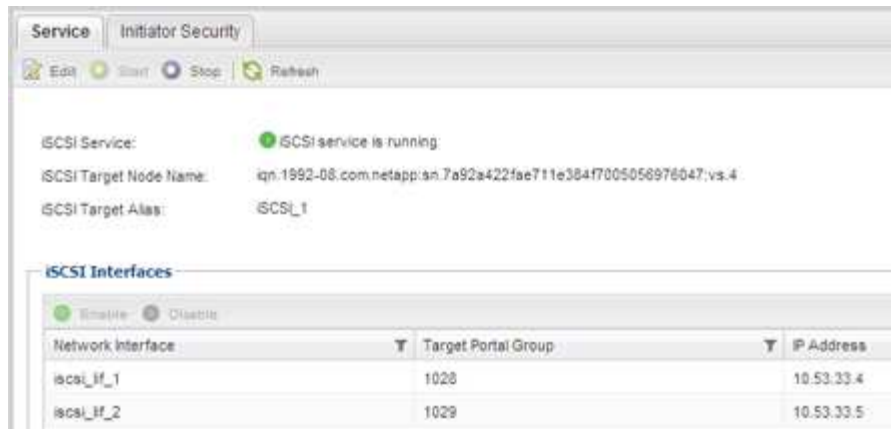
If you choose to use an existing storage virtual machine (SVM), you must verify that the iSCSI service is running on the SVM.

Before you begin

You must have selected an existing SVM on which you plan to create a new LUN.

Steps

1. Navigate to the **SVMs** window.
2. Click the **SVM Settings** tab.
3. In the **Protocols** pane, click **iSCSI**.
4. Verify that the iSCSI service is running.



5. Record the iSCSI interfaces listed for the SVM.

What to do next

If the iSCSI service is not running, start the iSCSI service or create a new SVM.

If there are fewer than two iSCSI interfaces per node, update the iSCSI configuration on the SVM or create a new SVM for iSCSI.

Create a LUN

You use the Create LUN wizard to create a LUN. The wizard also creates the igroup and maps the LUN to the igroup, which enables the specified host to access the LUN.

Before you begin

- There must be an aggregate with enough free space to contain the LUN.
- There must be a storage virtual machine (SVM) with the iSCSI protocol enabled and the appropriate logical interfaces (LIFs) created.
- You must have recorded the iSCSI initiator node name of the host.

LUNs are mapped to a subset of the initiators in the igroup to limit the number of paths from the host to the LUN.

- By default, ONTAP uses Selective LUN Map (SLM) to make the LUN accessible only through paths on the node owning the LUN and its high-availability (HA) partner.
- You still must configure all of the iSCSI LIFs on every node for LUN mobility in case the LUN is moved to another node in the cluster.
- When moving a volume or a LUN, you must modify the SLM reporting-nodes list before moving.

About this task

If your organization has a naming convention, you should use names for the LUN, volume, and so on that fit your convention. Otherwise, you should accept the default names.

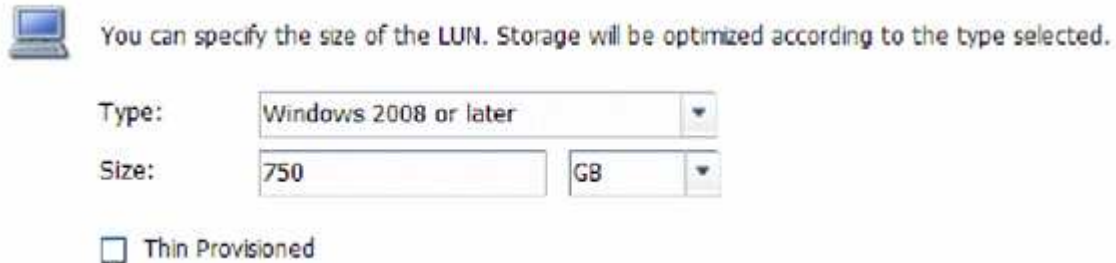
Steps

1. Navigate to the **LUNs** window.
2. Click **Create**.
3. Browse and select an SVM in which you want to create the LUNs.

The Create LUN Wizard is displayed.

4. On the **General Properties** page, select the LUN type **Windows 2008 or later** for LUNs used directly by the Windows host, or select **Hyper-V** for LUNs containing virtual hard disks (VHDs) for Hyper-V virtual machines.

Leave the **Thin Provisioned** check box unselected.



You can specify the size of the LUN. Storage will be optimized according to the type selected.

Type: Windows 2008 or later

Size: 750 GB

Thin Provisioned

5. On the **LUN Container** page, select an existing FlexVol volume.

You must ensure that there is enough space in the volume. If sufficient space is not available in the existing volumes, you can create a new volume.

6. On the **Initiators Mapping** page, click **Add Initiator Group**, enter the required information on the **General** tab, and then on the **Initiators** tab, enter the iSCSI initiator node name of the host that you recorded.
7. Confirm the details, and then click **Finish** to complete the wizard.

Related information

[System administration](#)

Configure iSCSI on an existing SVM

You can configure iSCSI on an existing storage virtual machine (SVM) and create a LUN and its containing volume with a single wizard. The iSCSI protocol must already be enabled but not configured on the SVM. This information is intended for SVMs for which you are configuring multiple protocols, but have not yet configured iSCSI.

Before you begin

You must have enough network addresses available to create two LIFs for each node.

About this task

LUNs are mapped to a subset of the initiators in the igroup to limit the number of paths from the host to the LUN.

- ONTAP uses Selective LUN Map (SLM) to make the LUN accessible only through paths on the node owning the LUN and its HA partner.
- You still must configure all of the iSCSI LIFs on every node for LUN mobility in case the LUN is moved to another node in the cluster.
- You must modify the SLM reporting-nodes list before moving a volume or a LUN.

Steps

1. Navigate to the **SVMs** window.
2. Select the SVM that you want to configure.
3. In the **SVMDetails** pane, verify that **iSCSI** is displayed with a gray background, which indicates that the protocol is enabled but not fully configured.

If **iSCSI** is displayed with a green background, the SVM is already configured.



4. Click the **iSCSI** protocol link with the gray background.

The Configure iSCSI Protocol window is displayed.

5. Configure the iSCSI service and LIFs from the **Configure iSCSI protocol** page:

- a. Enter a target alias name.
- b. Enter **2** in the **LIFs per node** field.

Two LIFs are required for each node to ensure availability and data mobility.

- c. Assign IP addresses for the LIFs either with a subnet or without a subnet.
- d. In the **Provision a LUN for iSCSI storage** area, enter the desired LUN size, host type, and iSCSI initiator name of the host.
- e. Click **Submit & Close**.

The image shows a screenshot of the 'Configure iSCSI protocol' window. The title bar reads 'Configure New Protocol for Storage Virtual Machine (SVM)'. The main heading is 'Configure iSCSI protocol'. Below the heading is a help icon and the text 'Configure LIFs to access the data using iSCSI protocol'. The section is titled 'Data Interface (LIF) Configuration'. On the left, there are several fields: 'Target Alias' with the value 'vs1_alias', 'LIFs Per Node' with the value '2' and a note '(Minimum: 1, Maximum: 6)', 'Assign IP Address' with a dropdown menu set to 'Without a subnet' and a sub-field 'IP Address: 10.10.10.10' with a 'Change' link, 'Broadcast Domain' with a dropdown menu set to 'Default', and 'Adapter Type' with a dropdown menu set to 'NIC'. On the right, there is a section titled 'Provision a LUN for iSCSI storage (Optional):' with fields for 'LUN Size' (50 GB), 'LUN OS Type' (Windows 2008 or later), and 'Host Initiator' (iqn.2001-04.com.example:ab). At the bottom left, there is a checkbox labeled 'Review or modify LIF configuration (Advanced Settings)' which is currently unchecked.

6. Review the **Summary** page, record the LIF information, and then click **OK**.

Create a new SVM

The storage virtual machine (SVM) provides the iSCSI target through which a host accesses LUNs. When you create the SVM, you also create logical interfaces (LIFs) and the LUN and its containing volume. You can create an SVM to separate the data and administration functions of a user from those of the other users in a cluster.

Before you begin

- You must have enough network addresses available to create two LIFs for each node.

About this task

LUNs are mapped to a subset of the initiators in the igroup to limit the number of paths from the host to the LUN.

- By default, ONTAP uses Selective LUN Map (SLM) to make the LUN accessible only through paths on the node owning the LUN and its HA partner.
- You still must configure all of the iSCSI LIFs on every node for LUN mobility in case the LUN is moved to another node in the cluster.
- When moving a volume or a LUN, you must modify the SLM-reporting-nodes list before moving.

Steps

1. Navigate to the **SVMs** window.
2. Click **Create**.
3. In the **Storage Virtual Machine (SVM) Setup** window, create the SVM:

- a. Specify a unique name for the SVM.

The name must either be a fully qualified domain name (FQDN) or follow another convention that

ensures unique names across a cluster.

- b. Select the IPspace that the SVM will belong to.

If the cluster does not use multiple IPspaces, the “Default” IPspace is used.

- c. Keep the default volume type selection.

Only FlexVol volumes are supported with SAN protocols.

- d. Select all of the protocols that you have licenses for and that you might use on the SVM, even if you do not want to configure all of the protocols immediately.

Selecting both NFS and CIFS when you create the SVM enables these two protocols to share the same LIFs. Adding these protocols later does not allow them to share LIFs.

If CIFS is one of the protocols you selected, then the security style is set to NTFS. Otherwise, the security style is set to UNIX.

- e. Keep the default language setting C.UTF-8.

- f. Select the desired root aggregate to contain the SVM root volume.

The aggregate for the data volume is selected separately in a later step.

- g. Click **Submit & Continue**.


The SVM is created, but protocols are not yet configured.

4. If the **Configure CIFS/NFS protocol** page appears because you enabled CIFS or NFS, click **Skip** and then configure CIFS or NFS later.
5. Configure the iSCSI service and create LIFs, and the LUN and its containing volume from the **Configure iSCSI protocol** page:
 - a. **Optional:** Enter a target alias name.
 - b. Assign IP address for the LIFs either by using a subnet or without a subnet.
 - c. Enter **2** in the **LIFs per node** field.

Two LIFs are required for each node to ensure availability and data mobility.

- d. In the **Provision a LUN for iSCSI storage** area, enter the desired LUN size, host type, and iSCSI initiator name of the host.
- e. Click **Submit & Continue**.

Configure iSCSI protocol

 Configure LIFs to access the data using iSCSI protocol

Data Interface (LIF) Configuration

Target Alias:	<input type="text" value="vs1_alias"/>	Provision a LUN for iSCSI storage (Optional):	
LIFs Per Node:	<input type="text" value="2"/> <i>(Minimum: 1, Maximum: 6)</i>	LUN Size:	<input type="text" value="50"/> GB <input type="button" value="v"/>
Assign IP Address:	<input type="text" value="Without a subnet"/> <input type="button" value="v"/>	LUN OS Type:	<input type="text" value="Windows 2008 or later"/> <input type="button" value="v"/>
	IP Address: 10.10.10.10 Change	Host Initiator:	<input type="text" value="iqn.2001-04.com.example:abi"/>
Broadcast Domain:	<input type="text" value="Default"/> <input type="button" value="v"/>		
Adapter Type:	<input type="text" value="NIC"/> <input type="button" value="v"/>		
<input type="checkbox"/> Review or modify LIF configuration (Advanced Settings)			

6. If the **Configure FC/FCoE protocol** page appears because you enabled FC, click **Skip** and then configure FC later.
7. When the **SVM Administration** appears, configure or defer configuring a separate administrator for this SVM:
 - Click **Skip** and configure an administrator later if desired.
 - Enter the requested information, and then click **Submit & Continue**.
8. Review the **Summary** page, record the LIF information, and then click **OK**.

Start iSCSI sessions with the target

The Windows host must have an iSCSI connection to each node in the cluster. You establish the sessions from the host by using the iSCSI Initiator Properties dialog box on the host.

Before you begin

You must know the IP address of an iSCSI data LIF on the storage virtual machine (SVM) that contains the LUN you are accessing.

About this task

In ONTAP, the iSCSI host must have paths to each node in the cluster. The native DSM selects the best paths to use. If paths fail, the native DSM selects alternate paths.

The buttons and labels in the iSCSI Initiator Properties dialog box vary between versions of Windows. Some of the steps in the task include more than one button or label name; you should pick the name that matches the version of Windows you are using.

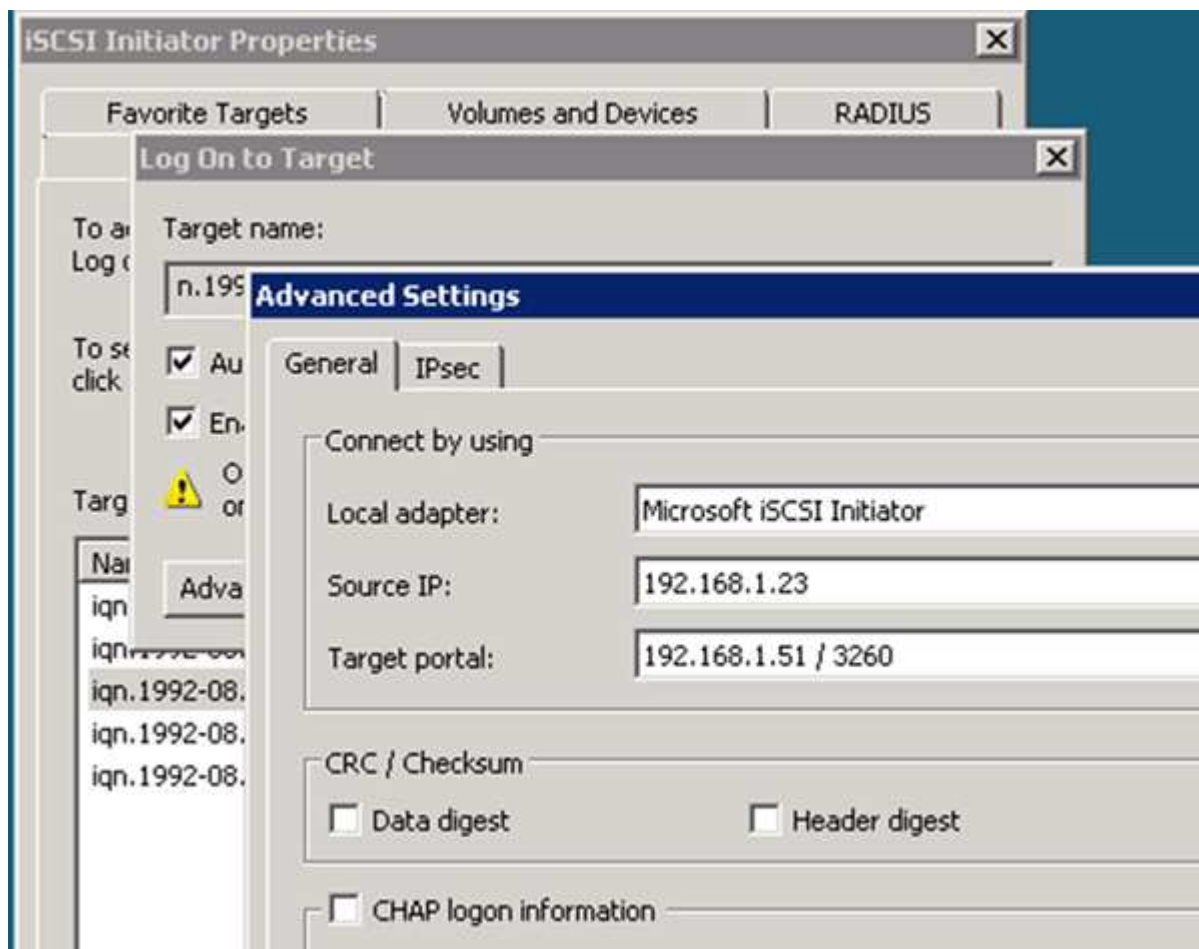
Steps

1. Open the **iSCSI Initiator Properties** dialog box:

For...	Click...
Windows Server 2012	Server Manager > Dashboard > Tools > iSCSI Initiator
Windows Server 2008	Start > Administrative Tools > iSCSI Initiator

- On the **Discovery** tab, click **Discover Portal** or **Add Portal**, and then enter the IP address of the iSCSI target port.
- On the **Targets** tab, select the target you discovered, and then click **Log on** or **Connect**.
- Select **Enable multi-path**, select **Automatically restore this connection when the computer starts** or **Add this connection to the list of Favorite Targets**, and then click **Advanced**.
- For **Local adapter**, select **Microsoft iSCSI Initiator**.

The following example is from Windows Server 2008:



- For **Source IP** or **Initiator IP**, select the IP address of a port on the same subnet or VLAN as one of the iSCSI target LIFs.
- Retain the default values for the remaining check boxes, and then click **OK**.
- On the **Targets** tab, select the same target again, and then click **Log on** or **Connect**.
- Select **Enable multi-path**, select **Automatically restore this connection when the computer starts** or **Add this connection to the list of Favorite Targets**, and then click **Advanced**.

10. For **Source IP** or **Initiator IP**, select the IP address of a different port on the subnet or VLAN of a different iSCSI target LIF.
11. For **Target portal**, select the IP address of the iSCSI target LIF that corresponds to the port you just selected for **Source IP**.
12. Retain the default values for the remaining check boxes, and then click **OK**.
13. Repeat steps 8 through 12 to connect to each target LIF that is available.

Discover new disks

LUNs on your storage virtual machine (SVM) appear as disks to the Windows host. Any new disks for LUNs you add to your system are not automatically discovered by the host. You must manually rescan disks to discover them.

Steps

1. Open the Windows Computer Management utility:

If you are using...	Navigate to...
Windows Server 2012	Tools > Computer Management
Windows Server 2008	Start > Administrative Tools > Computer Management
Windows Server 2016	Start > Administrative Tools > Computer Management

2. Expand the **Storage** node in the navigation tree.
3. Click **Disk Management**.
4. Click **Action > Rescan Disks**.

Initialize and format the LUN

When a new LUN is first accessed by the Windows host, it has no partition or file system. You must initialize the LUN, and optionally format it with a file system.

Before you begin

The LUN must have been discovered by the Windows host.

About this task

LUNs appear in Windows Disk Management as disks.

You can initialize the disk as a basic disk with a GPT or MBR partition table.

You typically format the LUN with a file system such as NTFS, but some applications use raw disks instead.

Steps

1. Start Windows Disk Management.

2. Right-click the LUN, and then select the required disk or partition type.
3. Follow the instructions in the wizard.

If you choose to format the LUN as NTFS, you must select the **Perform a quick format** check box.

Verify that the host can write to and read from the LUN

Before using the LUN, you should verify that the host can write data to the LUN and read it back.

Before you begin

The LUN must be initialized and formatted with a file system.

About this task

If the storage cluster node on which the LUN is created can be failed over to its partner node, you should verify reading the data while the node is failed over. This test might not be possible if the storage cluster is in production use.

If any of the tests fail, you should verify that the iSCSI service is running and check the iSCSI paths to the LUN.

Steps

1. On the host, copy one or more files to the LUN.
2. Copy the files back to a different folder on the original disk.
3. Compare the copied files to the original.

You can use the `comp` command at the Windows command prompt to compare two files.

4. **Optional:** Fail over the storage cluster node containing the LUN and verify that you can still access the files on the LUN.
5. Use the native DSM to view the paths to the LUN and verify that you have the expected number of paths.

You should see two paths to the storage cluster node on which the LUN is created, and two paths to the partner node.

Copyright Information

Copyright © 2022 NetApp, Inc. All rights reserved. Printed in the U.S. No part of this document covered by copyright may be reproduced in any form or by any means-graphic, electronic, or mechanical, including photocopying, recording, taping, or storage in an electronic retrieval system- without prior written permission of the copyright owner.

Software derived from copyrighted NetApp material is subject to the following license and disclaimer:

THIS SOFTWARE IS PROVIDED BY NETAPP "AS IS" AND WITHOUT ANY EXPRESS OR IMPLIED WARRANTIES, INCLUDING, BUT NOT LIMITED TO, THE IMPLIED WARRANTIES OF MERCHANTABILITY AND FITNESS FOR A PARTICULAR PURPOSE, WHICH ARE HEREBY DISCLAIMED. IN NO EVENT SHALL NETAPP BE LIABLE FOR ANY DIRECT, INDIRECT, INCIDENTAL, SPECIAL, EXEMPLARY, OR CONSEQUENTIAL DAMAGES (INCLUDING, BUT NOT LIMITED TO, PROCUREMENT OF SUBSTITUTE GOODS OR SERVICES; LOSS OF USE, DATA, OR PROFITS; OR BUSINESS INTERRUPTION) HOWEVER CAUSED AND ON ANY THEORY OF LIABILITY, WHETHER IN CONTRACT, STRICT LIABILITY, OR TORT (INCLUDING NEGLIGENCE OR OTHERWISE) ARISING IN ANY WAY OUT OF THE USE OF THIS SOFTWARE, EVEN IF ADVISED OF THE POSSIBILITY OF SUCH DAMAGE.

NetApp reserves the right to change any products described herein at any time, and without notice. NetApp assumes no responsibility or liability arising from the use of products described herein, except as expressly agreed to in writing by NetApp. The use or purchase of this product does not convey a license under any patent rights, trademark rights, or any other intellectual property rights of NetApp.

The product described in this manual may be protected by one or more U.S. patents, foreign patents, or pending applications.

RESTRICTED RIGHTS LEGEND: Use, duplication, or disclosure by the government is subject to restrictions as set forth in subparagraph (c)(1)(ii) of the Rights in Technical Data and Computer Software clause at DFARS 252.277-7103 (October 1988) and FAR 52-227-19 (June 1987).

Trademark Information

NETAPP, the NETAPP logo, and the marks listed at <http://www.netapp.com/TM> are trademarks of NetApp, Inc. Other company and product names may be trademarks of their respective owners.