



構成に適したインストール手順の選択

ONTAP MetroCluster

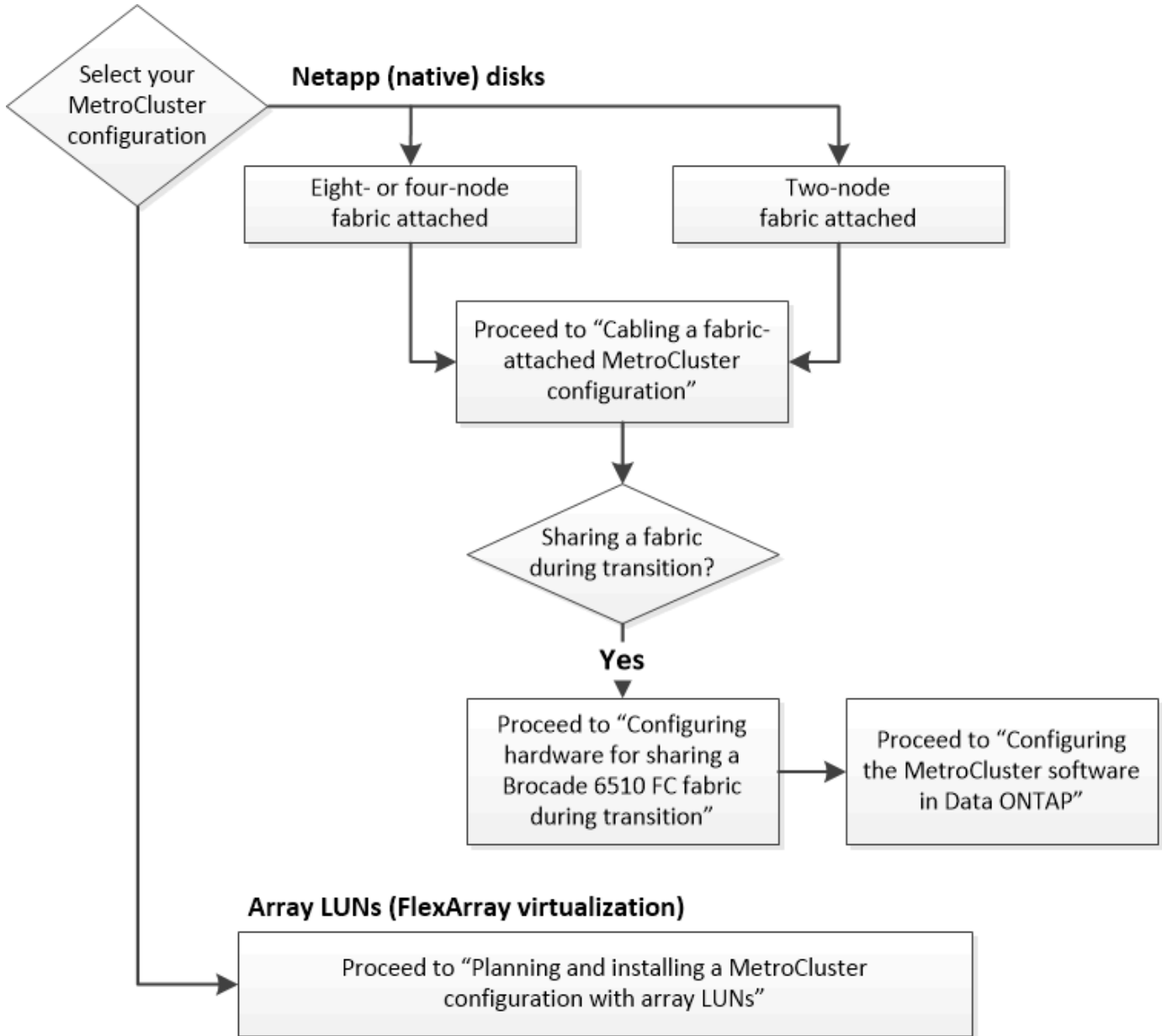
Megan Bock, Thom Illingworth, Ivana Devine
August 15, 2021

目次

構成に適したインストール手順の選択	1
-------------------------	---

構成に適したインストール手順の選択

FlexArray LUN を使用しているかどうか、 MetroCluster 構成のノード数、および 7-Mode のファブリック MetroCluster で使用されている既存の FC スイッチファブリックを共有しているかどうかに基づいて、正しいインストール手順を選択する必要があります。



インストールの種類	使用する手順
ネットアップ（ネイティブ）ディスクを使用するファブリック接続構成	1. "ファブリック接続 MetroCluster 構成のケーブル接続" 2. "ONTAP での MetroCluster ソフトウェアの設定"

<p>既存の FC スイッチファブリックを共有するファブリック接続構成</p> <p>このインストールは、Brocade 6510 スイッチを使用する 7-Mode ファブリック MetroCluster 構成を含む一時的な構成としてのみサポートされています。</p>	<ol style="list-style-type: none">1. "ファブリック接続 MetroCluster 構成のケーブル接続"2. "移行中に 7-Mode Brocade 6510 FC ファブリックを共有するための MetroCluster ハードウェアの構成"3. "ONTAP での MetroCluster ソフトウェアの設定"
--	--

Copyright Information

Copyright © 2021 NetApp, Inc. All rights reserved. Printed in the U.S. No part of this document covered by copyright may be reproduced in any form or by any means-graphic, electronic, or mechanical, including photocopying, recording, taping, or storage in an electronic retrieval system- without prior written permission of the copyright owner.

Software derived from copyrighted NetApp material is subject to the following license and disclaimer:

THIS SOFTWARE IS PROVIDED BY NETAPP "AS IS" AND WITHOUT ANY EXPRESS OR IMPLIED WARRANTIES, INCLUDING, BUT NOT LIMITED TO, THE IMPLIED WARRANTIES OF MERCHANTABILITY AND FITNESS FOR A PARTICULAR PURPOSE, WHICH ARE HEREBY DISCLAIMED. IN NO EVENT SHALL NETAPP BE LIABLE FOR ANY DIRECT, INDIRECT, INCIDENTAL, SPECIAL, EXEMPLARY, OR CONSEQUENTIAL DAMAGES (INCLUDING, BUT NOT LIMITED TO, PROCUREMENT OF SUBSTITUTE GOODS OR SERVICES; LOSS OF USE, DATA, OR PROFITS; OR BUSINESS INTERRUPTION) HOWEVER CAUSED AND ON ANY THEORY OF LIABILITY, WHETHER IN CONTRACT, STRICT LIABILITY, OR TORT (INCLUDING NEGLIGENCE OR OTHERWISE) ARISING IN ANY WAY OUT OF THE USE OF THIS SOFTWARE, EVEN IF ADVISED OF THE POSSIBILITY OF SUCH DAMAGE.

NetApp reserves the right to change any products described herein at any time, and without notice. NetApp assumes no responsibility or liability arising from the use of products described herein, except as expressly agreed to in writing by NetApp. The use or purchase of this product does not convey a license under any patent rights, trademark rights, or any other intellectual property rights of NetApp.

The product described in this manual may be protected by one or more U.S. patents, foreign patents, or pending applications.

RESTRICTED RIGHTS LEGEND: Use, duplication, or disclosure by the government is subject to restrictions as set forth in subparagraph (c)(1)(ii) of the Rights in Technical Data and Computer Software clause at DFARS 252.277-7103 (October 1988) and FAR 52-227-19 (June 1987).

Trademark Information

NETAPP, the NETAPP logo, and the marks listed at <http://www.netapp.com/TM> are trademarks of NetApp, Inc. Other company and product names may be trademarks of their respective owners.