



バックアップ・ユーザおよび hdbuserstore の設定

Snap Creator Framework

NetApp
August 04, 2021

目次

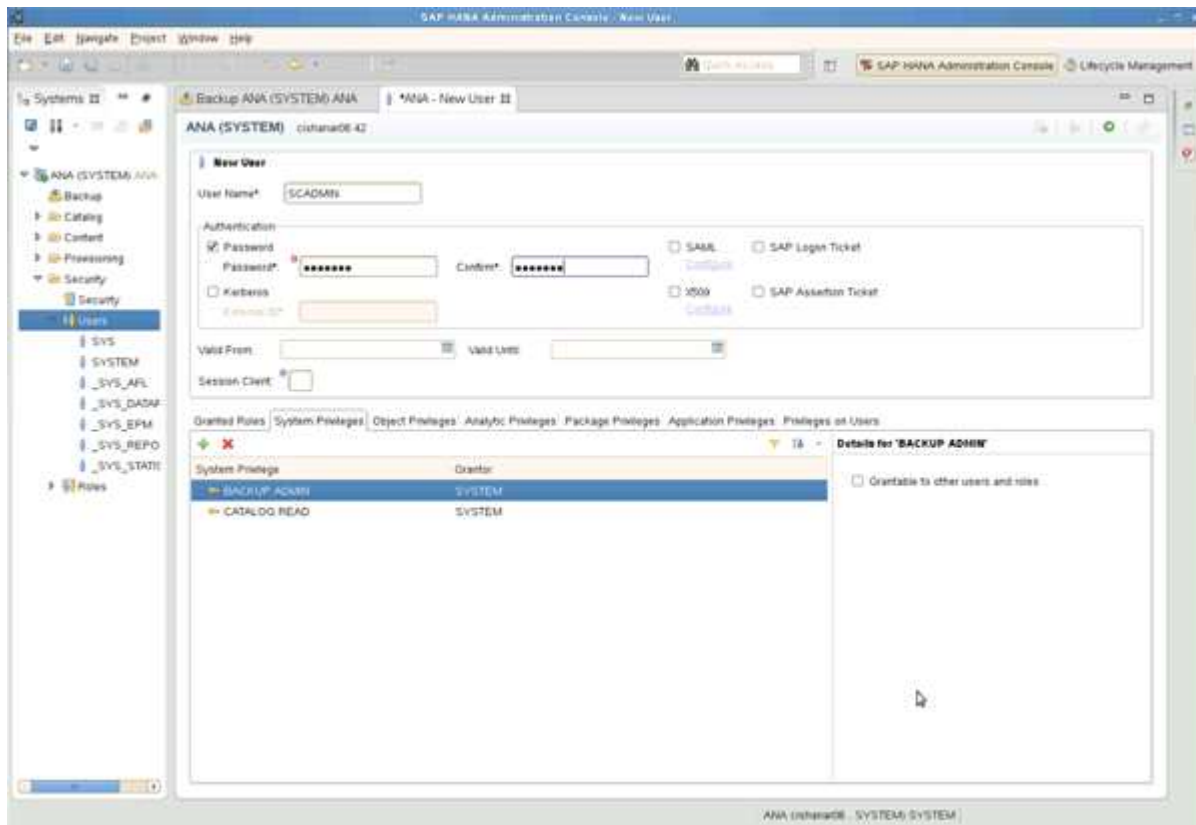
バックアップ・ユーザおよび hdbuserstore の設定.....	1
-------------------------------------	---

バックアップ・ユーザおよび hdbuserstore の設定

Snap Creator でバックアップ処理を実行するには、HANA データベース内に専用のデータベースユーザを設定する必要があります。2 番目の手順では、このバックアップユーザの SAP HANA ユーザストアキーを設定する必要があります。このユーザストアキーは、Snap Creator SAP HANA プラグインの構成内で使用されます。

バックアップユーザには次の権限が必要です。

- バックアップ管理者
- カタログの読み取り



1. 管理ホストで、Snap Creator がインストールされたホストには、SAP HANA データベースに属するすべてのデータベースホスト用のユーザストアキーが設定されます。ユーザストアキーは、OS root ユーザ「hdbuserstore set keyhost 3 [インスタンス] 15 ユーザパスワード」で設定されます
2. 4 つのデータベース・ノードすべてにキーを設定します。

```
mgmtsrv01:/usr/sap/hdbclient32 # ./hdbuserstore set SCADMIN08
cishanar08:34215 SCADMIN Password
mgmtsrv01:/usr/sap/hdbclient32 # ./hdbuserstore set SCADMIN09
cishanar09:34215 SCADMIN Password
mgmtsrv01:/usr/sap/hdbclient32 # ./hdbuserstore set SCADMIN10
cishanar10:34215 SCADMIN password
mgmtsrv01:/usr/sap/hdbclient32 # ./hdbuserstore set SCADMIN11
cishanar11:34215 SCADMIN Password
mgmtsrv01:/usr/sap/hdbclient32 # ./hdbuserstore LIST
DATA FILE          : /root/.hdb/mgmtsrv01/SSFS_HDB.DAT
```

KEY SCADMIN08

ENV : cishanar08:34215

USER: SCADMIN

KEY SCADMIN09

ENV : cishanar09:34215

USER: SCADMIN

KEY SCADMIN10

ENV : cishanar10:34215

USER: SCADMIN

KEY SCADMIN11

ENV : cishanar11:34215

USER: SCADMIN

mgmtsrv01:/usr/sap/hdbclient32

Copyright Information

Copyright © 2021 NetApp, Inc. All rights reserved. Printed in the U.S. No part of this document covered by copyright may be reproduced in any form or by any means-graphic, electronic, or mechanical, including photocopying, recording, taping, or storage in an electronic retrieval system- without prior written permission of the copyright owner.

Software derived from copyrighted NetApp material is subject to the following license and disclaimer:

THIS SOFTWARE IS PROVIDED BY NETAPP "AS IS" AND WITHOUT ANY EXPRESS OR IMPLIED WARRANTIES, INCLUDING, BUT NOT LIMITED TO, THE IMPLIED WARRANTIES OF MERCHANTABILITY AND FITNESS FOR A PARTICULAR PURPOSE, WHICH ARE HEREBY DISCLAIMED. IN NO EVENT SHALL NETAPP BE LIABLE FOR ANY DIRECT, INDIRECT, INCIDENTAL, SPECIAL, EXEMPLARY, OR CONSEQUENTIAL DAMAGES (INCLUDING, BUT NOT LIMITED TO, PROCUREMENT OF SUBSTITUTE GOODS OR SERVICES; LOSS OF USE, DATA, OR PROFITS; OR BUSINESS INTERRUPTION) HOWEVER CAUSED AND ON ANY THEORY OF LIABILITY, WHETHER IN CONTRACT, STRICT LIABILITY, OR TORT (INCLUDING NEGLIGENCE OR OTHERWISE) ARISING IN ANY WAY OUT OF THE USE OF THIS SOFTWARE, EVEN IF ADVISED OF THE POSSIBILITY OF SUCH DAMAGE.

NetApp reserves the right to change any products described herein at any time, and without notice. NetApp assumes no responsibility or liability arising from the use of products described herein, except as expressly agreed to in writing by NetApp. The use or purchase of this product does not convey a license under any patent rights, trademark rights, or any other intellectual property rights of NetApp.

The product described in this manual may be protected by one or more U.S. patents, foreign patents, or pending applications.

RESTRICTED RIGHTS LEGEND: Use, duplication, or disclosure by the government is subject to restrictions as set forth in subparagraph (c)(1)(ii) of the Rights in Technical Data and Computer Software clause at DFARS 252.277-7103 (October 1988) and FAR 52-227-19 (June 1987).

Trademark Information

NETAPP, the NETAPP logo, and the marks listed at <http://www.netapp.com/TM> are trademarks of NetApp, Inc. Other company and product names may be trademarks of their respective owners.