

AFF A250 Systems Installation and Setup Instructions



Prepare and install | Stage 1



Pre-setup

1. Unpack all boxes and inventory contents.
Attention: Customers with specific power requirements must check [Hardware Universe](#) for their configuration options.
 2. Gather information about your storage system by completing the cluster setup worksheets:
[Get started with ONTAP cluster set up.](#)
 3. Review the requirements and procedure steps for [Configure ONTAP on a new cluster with System Manager.](#)
- Note:** For MetroCluster configurations, use the [MetroCluster installation content.](#)



Contents in the box

Cables shown are the most common. See [Hardware Universe](#) for more options.



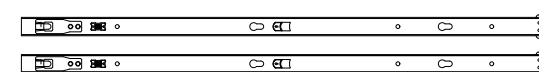
25 GbE cable (SFP28)
HA and cluster interconnect
Part numbers X66240A-2, 2m;
X66240A-5, 5m; X66240A-15, 15m



RJ-45 cable
Wrench port (e0M/BMC)
Data port (e0a/e0b)
(order-dependent)
Part numbers X5585-R6, 3m;
X6562-R6, 5m



32 Gb FC (SFP+ Op)
FC optical network cable
Part numbers X66250-2, 2m;
X66250-5, 5m; X66250-15, 15m



Slide rail kit

Additional cables

- Ethernet cables
- micro USB console cable
- Power cables



You provide

- ✓ **Rack space**
2U for platform +2U for each NS224 shelf

- ✓ **Screwdriver**
Phillips #2

- ✓ **Additional network cables**
For connecting your storage system to your network switch and laptop or console

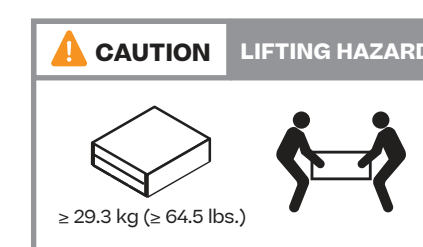
- ✓ **Laptop or console**
With a USB/serial connection and access to a Web browser to configure your storage system



Install storage system in a rack or cabinet

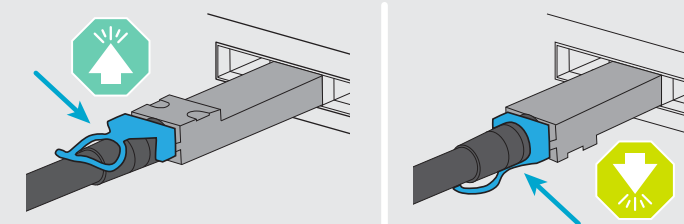
Attention: Airflow through the platform and shelves enters from the front where the bezel or end caps are installed and exhausts out the rear where the ports are located.

1. Install the rail kits for the platform and shelves, as needed, using the instructions included with the kits.
2. Install the platform chassis into the rack or cabinet.
3. Install the bezel on the front of the platform.
4. Install any drive shelves into the rack or cabinet.



Cable controllers | Stage 2

Attention: Be sure to check the illustration arrow for the proper cable connector pull-tab orientation.
Note: To unplug a cable, gently pull the tab to release the locking mechanism.



1 Cable the controllers for a switchless or switched cluster

See your network administrator for help connecting to your switches.

 25 GbE cables

1 Switchless cluster

Cable the e0c port to the e0c port and then cable the e0d port to the e0d port.

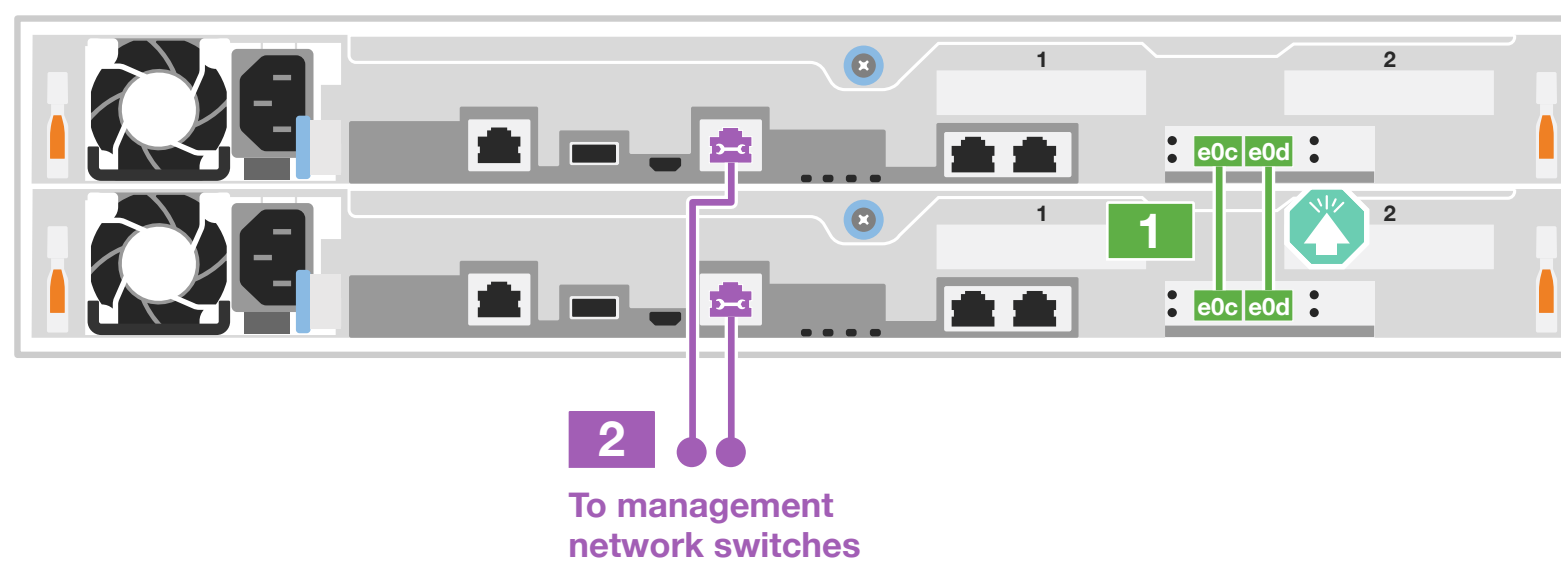
Switched cluster

Cable port e0c and port e0d on each controller to the cluster interconnect switches.

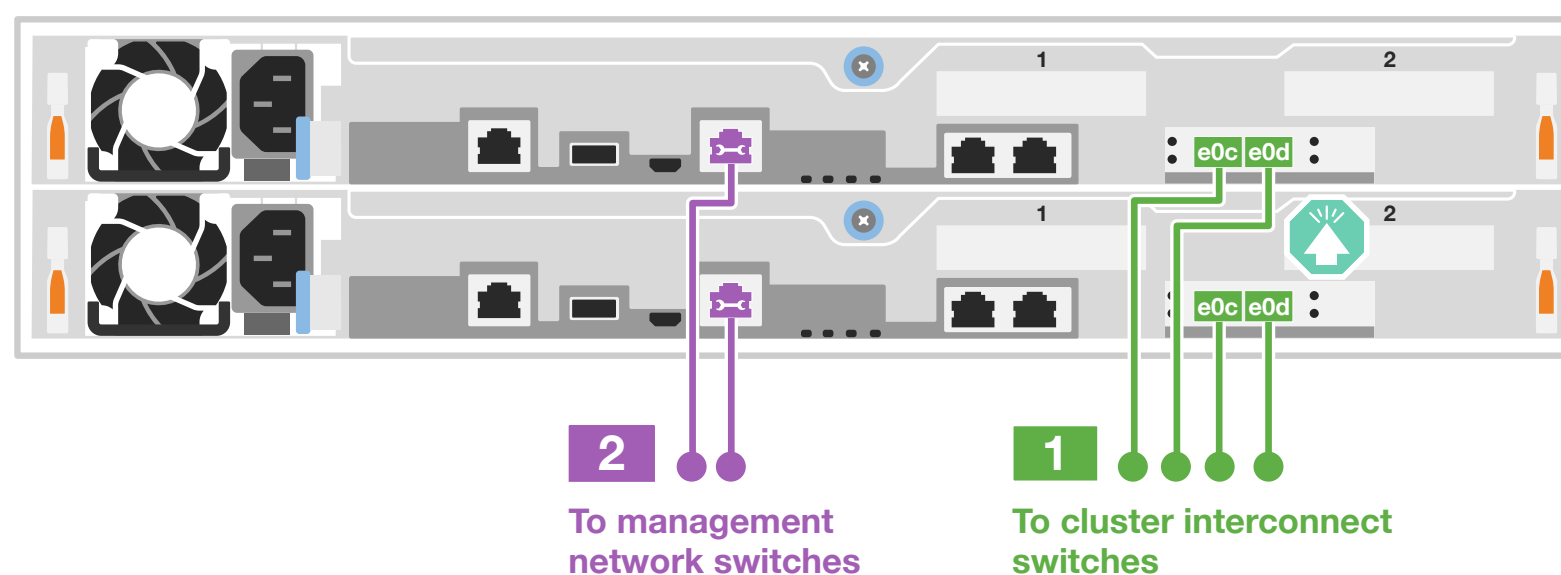
 Ethernet cables 

2 Connect the wrench port (e0M/BMC) to the management switches.

Switchless cluster



Switched cluster

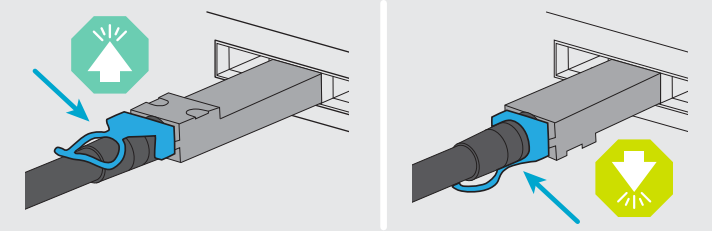


DO NOT plug the power cables into a power source yet.

The storage system will boot as soon as the power cables are plugged into the power source and power supplies.

Cable controllers | Stage 2

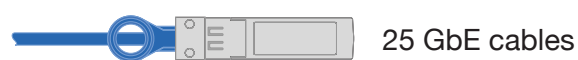
Attention: Be sure to check the illustration arrow for the proper cable connector pull-tab orientation.
Note: To unplug a cable, gently pull the tab to release the locking mechanism.



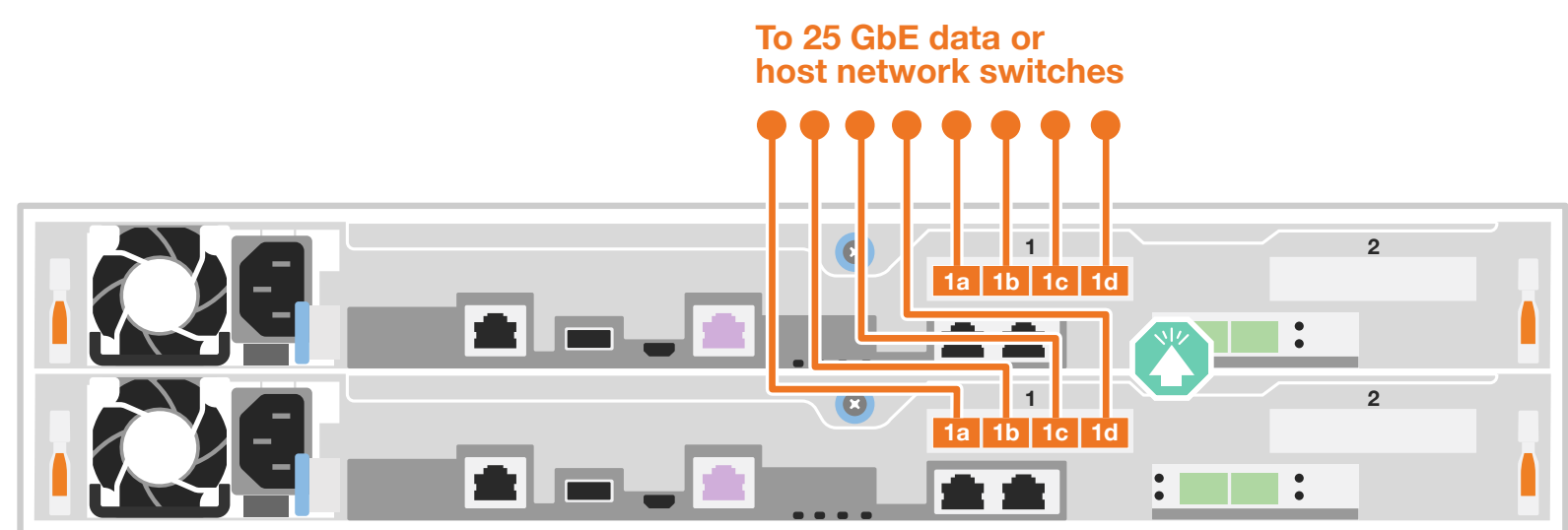
Note: [Hardware Universe](#) slot priority for host network cards (FC or 25GbE) is slot 2. However, if you have both cards, the FC card goes in slot 2 and the 25GbE card goes in slot 1 (as shown below). If you have an external shelf, the storage card goes in slot 1, the only supported slot for shelves.

2 Host network options

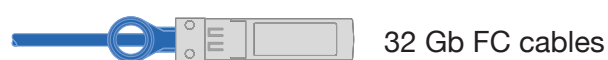
Option 1: 25 GbE host network



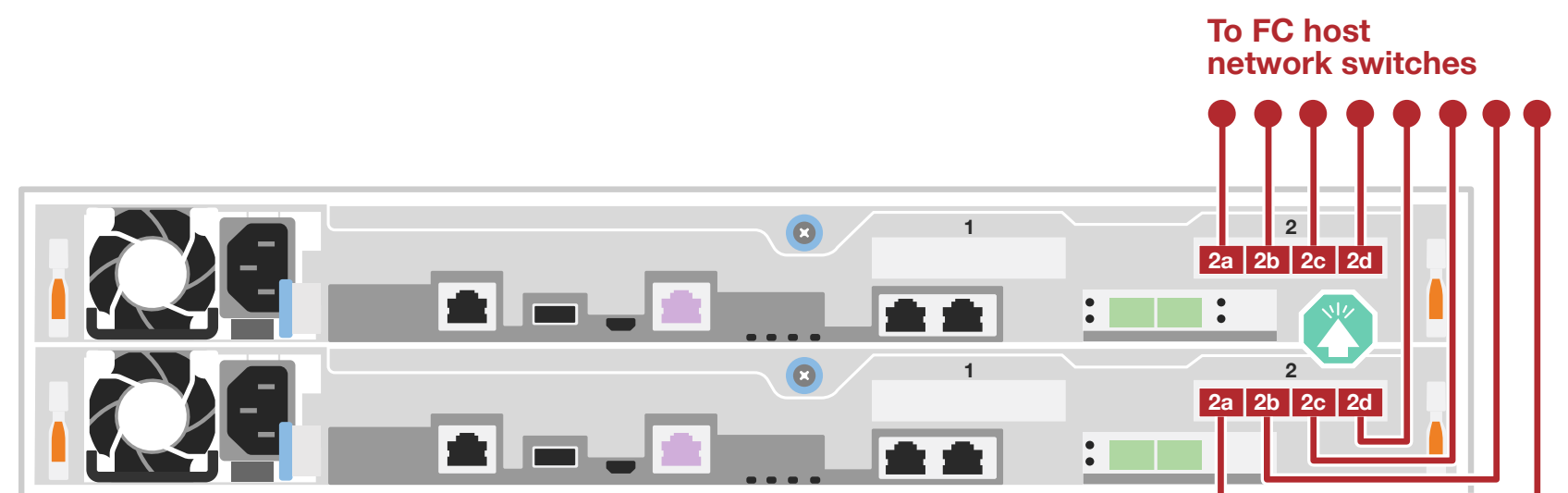
Cable ports 1a through 1d to data or host network switches.



Option 2: FC host network



Cable ports 2a through 2d to the FC host network switches.



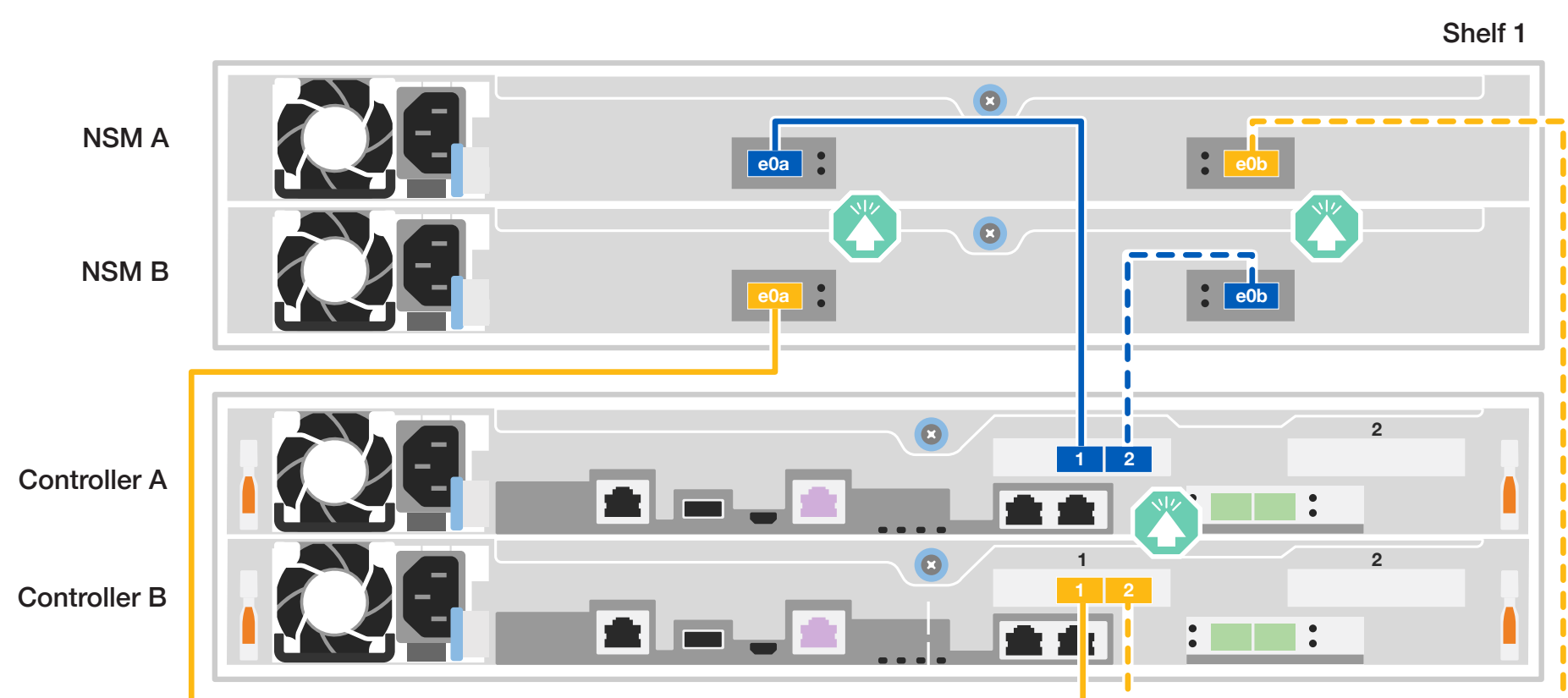
3 Storage option

Cable to one NS224 shelf



Use the table below to connect your controllers to the NS224 shelf.

		Shelf 1				
		NSM A		NSM B		
Controller	A	Slot 1	e0a	e0b	e0a	e0b
		Port 1				
	Port 2					
	B					Slot 1
Port 1						
Port 2						



Storage system bring-up | Stage 3

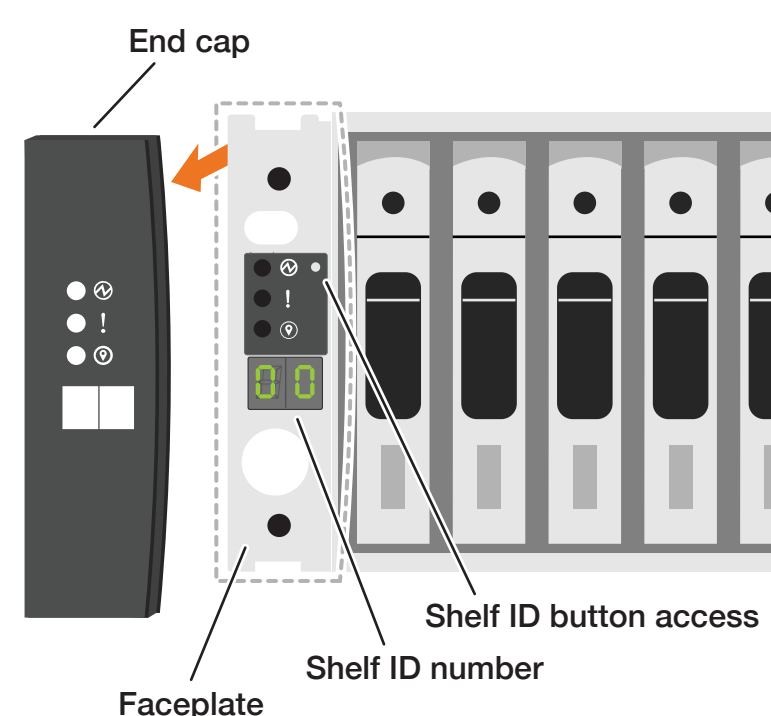
1 Power on the shelves and set shelf IDs

Note: For NS224 drive shelves, shelf IDs are pre-set to 00 and 01. If you want to change the shelf IDs, use the straightened end of a paperclip, or narrow tipped ball point pen to access the shelf ID button behind the faceplate.

1. Plug the power cords into the shelf power supplies, and then connect them to power sources on different circuits.

Note: NS224 shelves have no power switch and will begin to boot.

2. If you need to change the shelf ID's, see [Change a shelf ID - NS224 shelves](#) for detailed instructions.

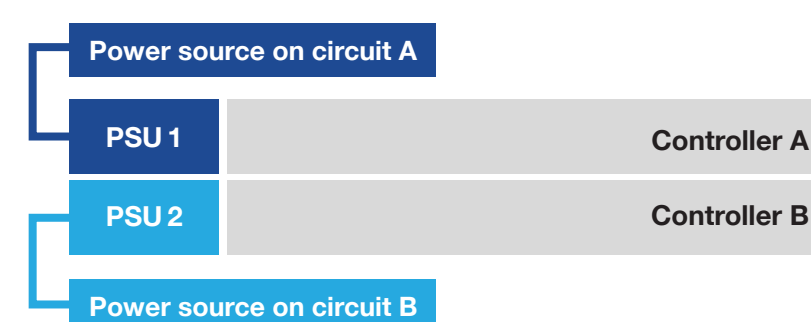


2 Connect the power cables



1. Connect the power cables to each controller's power supply, and then to power sources on different circuits.
2. Secure the power cables using the securing device on each power supply.

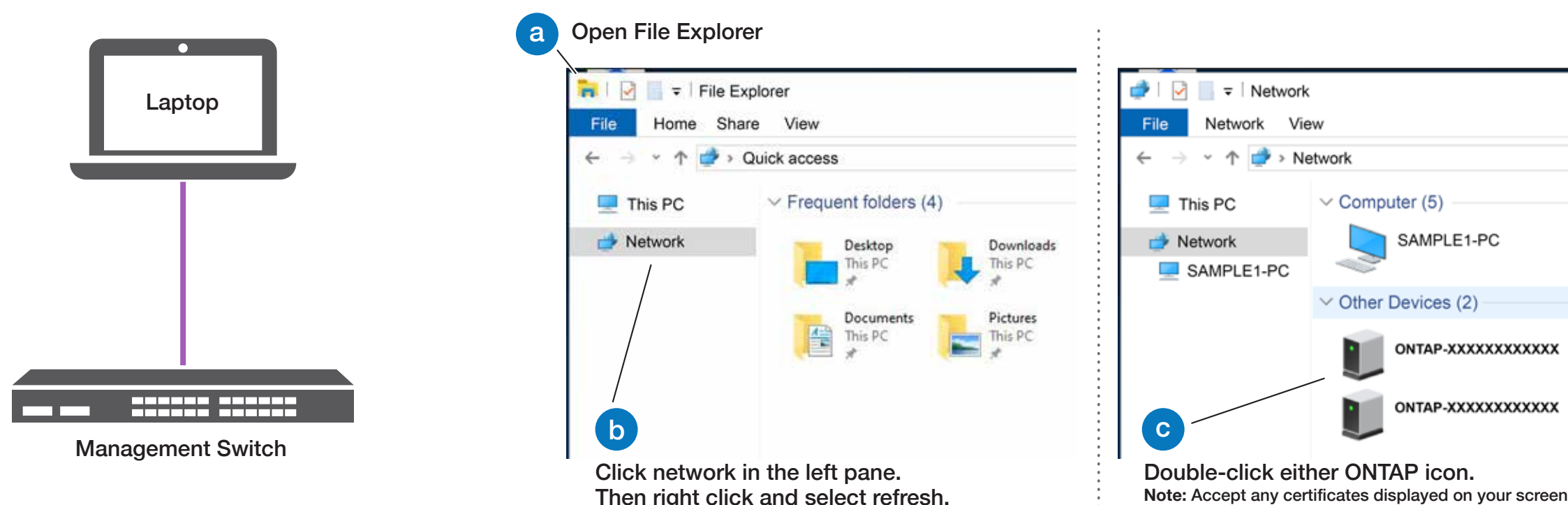
Note: The storage system begins to boot when the power supplies are connected to the power sources. Booting might take up to 8 minutes.



3 Complete the initial cluster setup with network discovery

Note: If your laptop does not support network discovery, see the [Detailed steps](#).

Connect your laptop to the management switch and access the network computers and devices.



4 Configure your cluster using the [Configure ONTAP on a new cluster with System Manager](#) procedure

3 Complete the setup

1. Click...
 - a) [mysupport.netapp.com](#)
 - b) [Create/log in to your account](#)
 - c) [Register your system](#)
2. [Download and install Active IQ Config Advisor](#), and then run it to verify the health of your storage system.
3. After you have completed the initial configuration, go to the [NetApp ONTAP Resources](#) page for information about configuring additional features in ONTAP.