



Identify configuration deviation

Digital Advisor

NetApp
October 04, 2024

Table of Contents

- Identify configuration deviation 1
- Understand configuration deviation 1
- Add a config drift template 1
- Compare a config drift template 2
- Generate a drift timeline report 3
- Manage a template 4

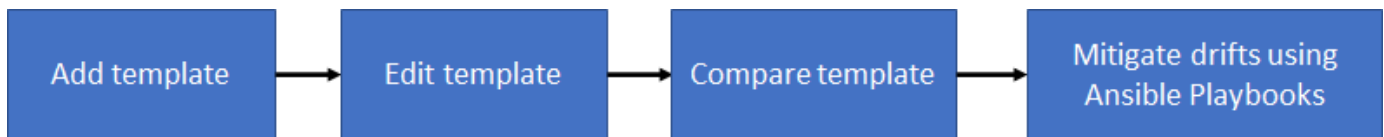
Identify configuration deviation

Understand configuration deviation

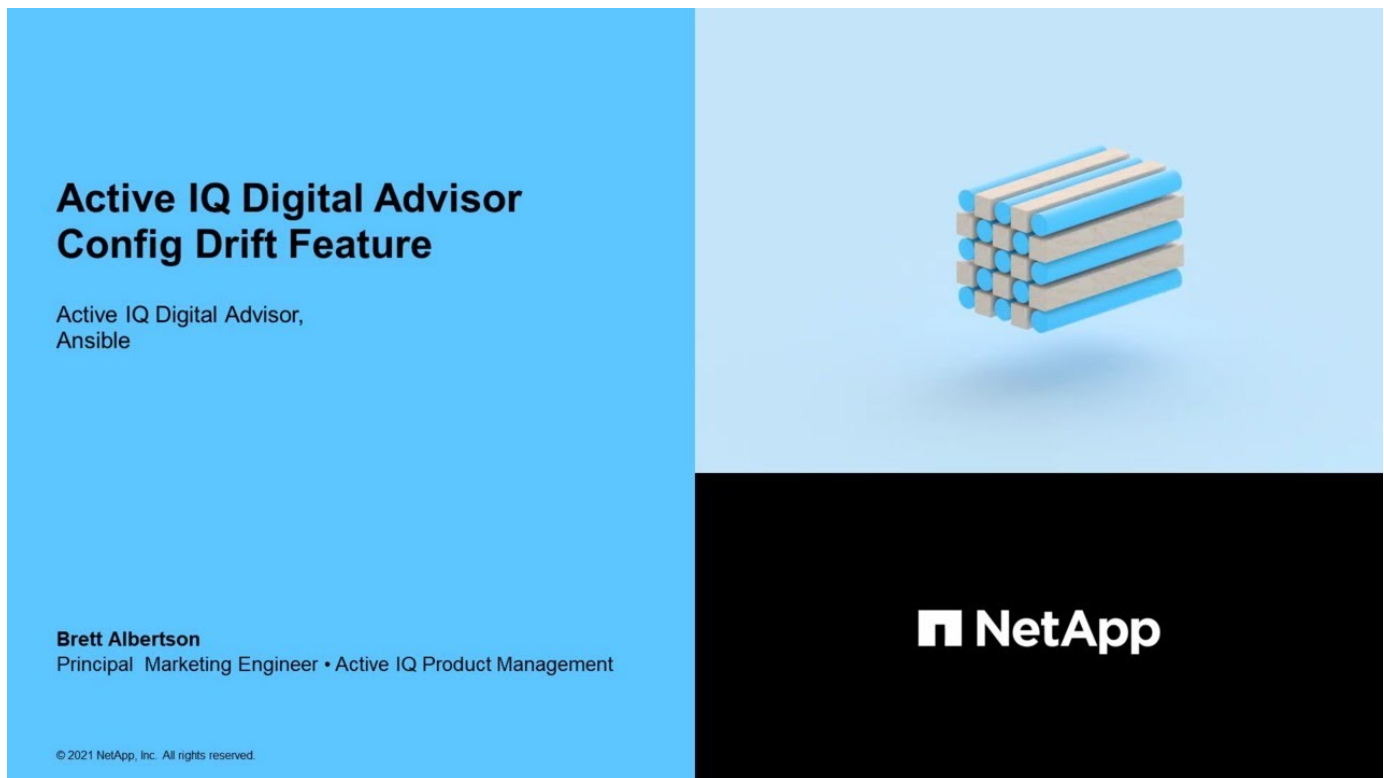
The Config Drift feature identifies configuration deviations by comparing a system template to a “golden” or base system template. You can schedule weekly or monthly drift reports or generate them on-demand. You can mitigate some deviations by using the Ansible Playbooks, which are provided in the config drift report.

This feature is available to systems with Advisor and Expert Support contracts only.

You can look at the following diagram to understand the workflow to identify configuration deviations and generate the report.



You can view the following video to generate and run an Ansible Playbook to fix the configuration deviations:



Add a config drift template

You should add a template to compare the system and cluster configurations and detect the configuration deviations in near real time. The config drift templates are added using systems running AutoSupport data.

About this task

The attributes in a config drift template are editable, and the following groups of the template support regular expressions for some sections:

Group	Section	Attribute
AGGREGATE	AGGR-INFO.XML	name
CLUSTER	CLUSTER-INFO.XML	cluster-name
LUN	LUN.XML	name
VSERVER	VSERVER-INFO.XML	vserver
NETWORK	NETWORK-INTERFACE.XML	vif
DNS	DNS.XML	domains
VOLUME	VOLUME.XML	vol

Using a regular expression, a user can create a config drift report that includes drifts arising from naming inconsistencies of volumes, aggregates, clusters, and so on. For instance, if a regular expression **aggr-name*** is mentioned for the attribute **Name** for the section **AGGR-INFO.XML** in the group **AGGREGATE**, then the values of the attribute without the prefix **aggr-name** are marked as a drift when the config drift report is generated.

Steps

1. From the left pane, click **Config Drift**.
2. Click **Add Template**.
3. Provide the requested values.
4. Optional: You can customize the template by editing the groups or deleting the non-required groups for a template.
5. Click **Add Template**.

Compare a config drift template

You can compare the system and cluster configurations and detect the configuration deviations in near real time.

Steps

1. From the left pane, click **Config Drift**.
2. Select one of the existing templates or click **Add Template** to add a new template.
3. Generate a config drift report

You can generate a report immediately or you can schedule the report to be generated on a weekly or monthly basis.

To generate a report immediately	To schedule the report to be generated on a weekly or monthly basis
<ol style="list-style-type: none"> 1. Select a category and provide the requested values for the report. 2. Select Include only drifts option to download only the configuration deviation changes. 3. Click Submit. 4. Download and view the config drift report. 5. Run Ansible Playbook (included as part of the config drift report) to mitigate the drifts. 	<ol style="list-style-type: none"> 1. Click the Schedule Report tab. 2. Select a category and provide the requested values for the report. 3. Select Include only drifts option to download only the configuration deviation changes. 4. Select the frequency of the report. 5. Select the start date and end date for the report. 6. Click Submit. 7. Download and view the config drift report. 8. Run Ansible Playbook (included as part of the config drift report) to mitigate the drifts.

An email is sent with the details of the configuration deviation between the selected systems.

Generate a drift timeline report

You can compare the AutoSupport data of the last 90 days and generate a report that provides information about the events and the configuration deviations that have occurred.

Steps

1. From the left pane, click **Config Drift**.
2. Select the **Drift Timeline** report type.
3. Generate a drift timeline report

You can generate a report immediately or you can schedule the report to be generated on a weekly or monthly basis.

To generate a report immediately	To schedule the report to be generated on a weekly or monthly basis
<ol style="list-style-type: none"> 1. Select a category and provide the requested values for the report. 2. Select Include only drifts option to download only the configuration deviation changes. 3. Click Submit. 4. Download and view the drift timeline report. 	<ol style="list-style-type: none"> 1. Click the Schedule Report tab. 2. Select a category and provide the requested values for the report. 3. Select Include only drifts option to download only the configuration deviation changes. 4. Select the frequency of the report. 5. Select the start date and end date for the report. 6. Click Submit. 7. Download and view the drift timeline report.

Manage a template

You can clone a template, share a template, edit the details of an existing template, and delete a template.

Sharing a template saves the time and effort required to create and customize a template that has already been created by a user. Shared templates can be mutually changed by shared users, allowing several users to make modifications to a single golden template.

About this task



- Access to shared templates can be revoked at any time.
- Shared users can delete this template from their account at any time.

Steps

1. From the left pane, click **Config Drift**.
2. Click  to make a copy of the template.
3. Click  and enter the usernames with whom you want to share the template.



If you enter the email address of the user instead of the username, the template will not be shared.

4. Click  to update the details of the template.
5. Click  to delete the template.

Copyright information

Copyright © 2024 NetApp, Inc. All Rights Reserved. Printed in the U.S. No part of this document covered by copyright may be reproduced in any form or by any means—graphic, electronic, or mechanical, including photocopying, recording, taping, or storage in an electronic retrieval system—without prior written permission of the copyright owner.

Software derived from copyrighted NetApp material is subject to the following license and disclaimer:

THIS SOFTWARE IS PROVIDED BY NETAPP “AS IS” AND WITHOUT ANY EXPRESS OR IMPLIED WARRANTIES, INCLUDING, BUT NOT LIMITED TO, THE IMPLIED WARRANTIES OF MERCHANTABILITY AND FITNESS FOR A PARTICULAR PURPOSE, WHICH ARE HEREBY DISCLAIMED. IN NO EVENT SHALL NETAPP BE LIABLE FOR ANY DIRECT, INDIRECT, INCIDENTAL, SPECIAL, EXEMPLARY, OR CONSEQUENTIAL DAMAGES (INCLUDING, BUT NOT LIMITED TO, PROCUREMENT OF SUBSTITUTE GOODS OR SERVICES; LOSS OF USE, DATA, OR PROFITS; OR BUSINESS INTERRUPTION) HOWEVER CAUSED AND ON ANY THEORY OF LIABILITY, WHETHER IN CONTRACT, STRICT LIABILITY, OR TORT (INCLUDING NEGLIGENCE OR OTHERWISE) ARISING IN ANY WAY OUT OF THE USE OF THIS SOFTWARE, EVEN IF ADVISED OF THE POSSIBILITY OF SUCH DAMAGE.

NetApp reserves the right to change any products described herein at any time, and without notice. NetApp assumes no responsibility or liability arising from the use of products described herein, except as expressly agreed to in writing by NetApp. The use or purchase of this product does not convey a license under any patent rights, trademark rights, or any other intellectual property rights of NetApp.

The product described in this manual may be protected by one or more U.S. patents, foreign patents, or pending applications.

LIMITED RIGHTS LEGEND: Use, duplication, or disclosure by the government is subject to restrictions as set forth in subparagraph (b)(3) of the Rights in Technical Data -Noncommercial Items at DFARS 252.227-7013 (FEB 2014) and FAR 52.227-19 (DEC 2007).

Data contained herein pertains to a commercial product and/or commercial service (as defined in FAR 2.101) and is proprietary to NetApp, Inc. All NetApp technical data and computer software provided under this Agreement is commercial in nature and developed solely at private expense. The U.S. Government has a non-exclusive, non-transferrable, nonsublicensable, worldwide, limited irrevocable license to use the Data only in connection with and in support of the U.S. Government contract under which the Data was delivered. Except as provided herein, the Data may not be used, disclosed, reproduced, modified, performed, or displayed without the prior written approval of NetApp, Inc. United States Government license rights for the Department of Defense are limited to those rights identified in DFARS clause 252.227-7015(b) (FEB 2014).

Trademark information

NETAPP, the NETAPP logo, and the marks listed at <http://www.netapp.com/TM> are trademarks of NetApp, Inc. Other company and product names may be trademarks of their respective owners.