



Manage on-prem ONTAP clusters

On-prem ONTAP clusters

NetApp
June 07, 2022

Table of Contents

- Manage on-prem ONTAP clusters 1
 - Managing storage for on-prem ONTAP clusters 1
 - Administer ONTAP using the Advanced View 5
 - Optimize your clusters using Active IQ Digital Advisor 8
 - Using Active IQ data to manage ONTAP clusters 9
 - Remove an on-prem ONTAP working environment 14

Manage on-prem ONTAP clusters

Managing storage for on-prem ONTAP clusters

After you discover your on-prem ONTAP cluster from Cloud Manager, you can open the working environment to provision and manage storage.

Creating volumes

Cloud Manager enables you to create NFS or CIFS volumes on existing aggregates. You can't create new aggregates on an on-prem ONTAP cluster from Cloud Manager.

A Cloud Manager feature called "templates" enables you to create volumes that are optimized for the workload requirements for certain applications; such as databases or streaming services. If your organization has created volume templates that you should use, follow [these steps](#).

Steps

1. On the Canvas page, double-click the name of the on-prem ONTAP cluster on which you want to provision volumes.
2. Click **Add New Volume**.
3. Follow the steps in the wizard to create the volume.
 - a. **Details & Protection:** Enter basic details about the volume and then select a Snapshot policy.

Some of the fields on this page are self-explanatory. The following list describes fields for which you might need guidance:

Field	Description
Size	The maximum size that you can enter largely depends on whether you enable thin provisioning, which enables you to create a volume that is bigger than the physical storage currently available to it.
Snapshot Policy	A Snapshot copy policy specifies the frequency and number of automatically created NetApp Snapshot copies. A NetApp Snapshot copy is a point-in-time file system image that has no performance impact and requires minimal storage. You can choose the default policy or none. You might choose none for transient data: for example, tempdb for Microsoft SQL Server.

- b. **Protocol:** Choose the protocol for the volume (NFS or CIFS) and then set the access control or permissions for the volume.

If you choose CIFS and a server isn't set up yet, then Cloud Manager prompts you to set up a CIFS server using either Active Directory or a workgroup.

The following list describes fields for which you might need guidance:

Field	Description
Access Control	An NFS export policy defines the clients in the subnet that can access the volume. By default, Cloud Manager enters a value that provides access to all instances in the subnet.

Field	Description
Permissions and Users/Groups	These fields enable you to control the level of access to an SMB share for users and groups (also called access control lists or ACLs). You can specify local or domain Windows users or groups, or UNIX users or groups. If you specify a domain Windows user name, you must include the user's domain using the format domain\username.

- c. **Usage Profile:** Choose whether to enable or disable storage efficiency features on the volume.

ONTAP includes several storage efficiency features that can reduce the total amount of storage that you need. NetApp storage efficiency features provide the following benefits:

Thin provisioning

Presents more logical storage to hosts or users than you actually have in your physical storage pool. Instead of preallocating storage space, storage space is allocated dynamically to each volume as data is written.

Deduplication

Improves efficiency by locating identical blocks of data and replacing them with references to a single shared block. This technique reduces storage capacity requirements by eliminating redundant blocks of data that reside in the same volume.

Compression

Reduces the physical capacity required to store data by compressing data within a volume on primary, secondary, and archive storage.

- d. **Review:** Review details about the volume and then click **Add**.

Creating volumes from templates

If your organization has created on-premises ONTAP volume templates so you can deploy volumes that are optimized for the workload requirements for certain applications, follow the steps in this section.

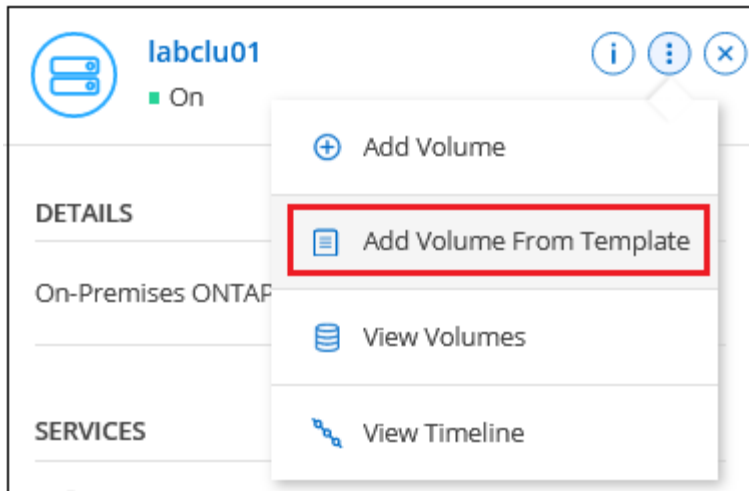
The template should make your job easier because certain volume parameters will already be defined in the template, such as disk type, size, protocol, snapshot policy, and more. When a parameter is already predefined, you can just skip to the next volume parameter.



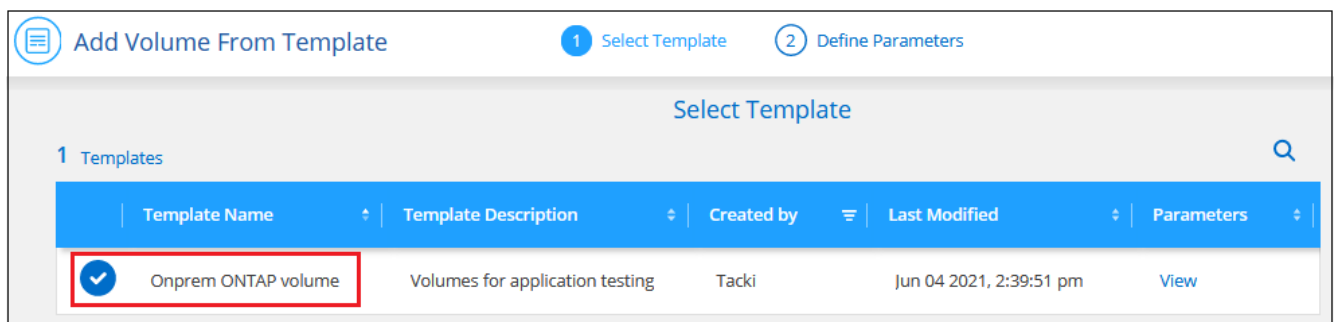
You can only create NFS or CIFS volumes when using templates.

Steps

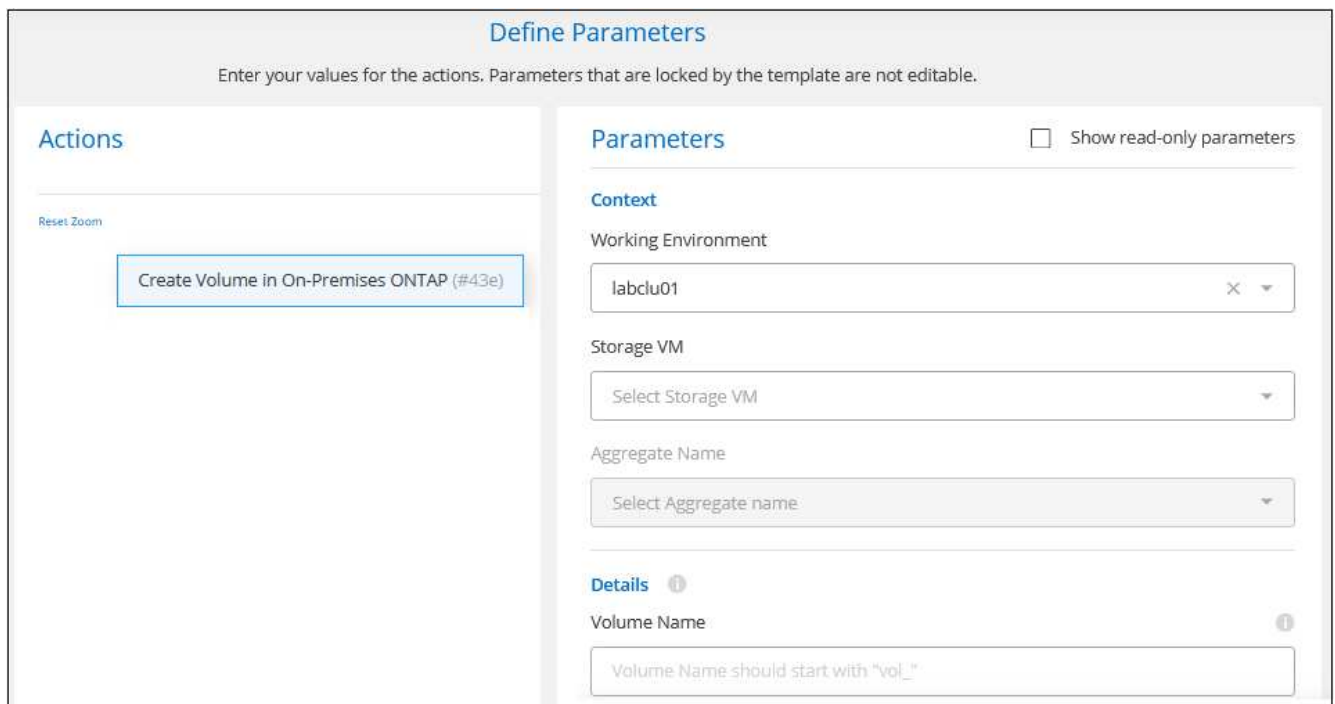
1. On the Canvas page, click the name of the on-premises ONTAP system on which you want to provision a volume.
2. Click > **Add Volume From Template**.



3. In the *Select Template* page, select the template that you want to use to create the volume and click **Next**.



The *Define Parameters* page is displayed.

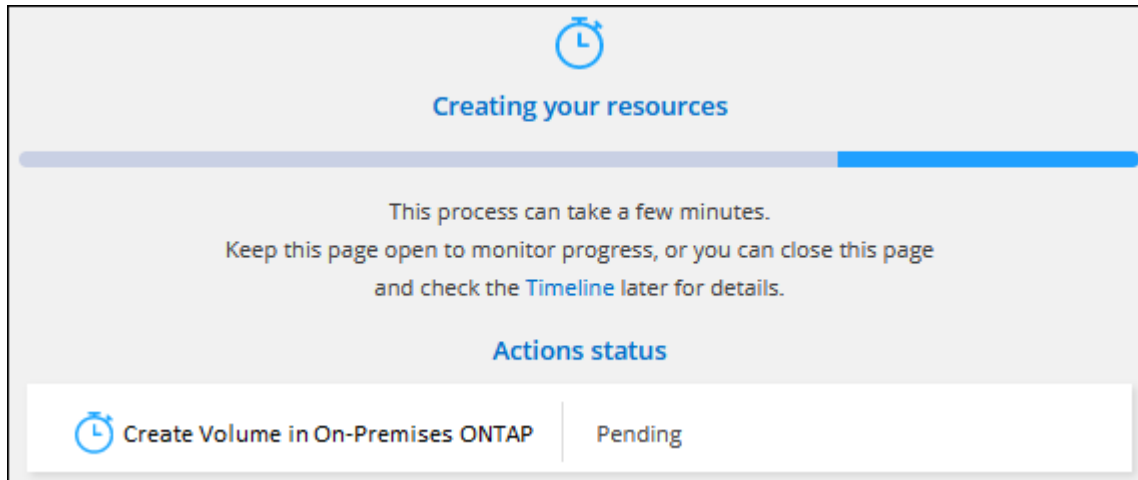


Note: You can click the checkbox **Show read-only parameters** to show all the fields that have been locked by the template if you want to see the values for those parameters. By default these predefined fields are hidden and only the fields you need to complete are shown.

4. In the *Context* area, the Working Environment is filled in with the name of the working environment you started with. You need to select the **Storage VM** and **Aggregate** where the volume will be created.
5. Add values for all of the parameters that are not hard-coded from the template. See [creating volumes](#) for details about all the parameters you need to complete to deploy an on-prem ONTAP volume.
6. Click **Run Template** after you have defined all the parameters needed for this volume.

Result

Cloud Manager provisions the volume and displays a page so that you can see the progress.



Then the new volume is added to the working environment.

Additionally, if any secondary action is implemented in the template, for example, enabling Cloud Backup on the volume, that action is also performed.

After you finish

If you provisioned a CIFS share, give users or groups permissions to the files and folders and verify that those users can access the share and create a file.

Replicating data

You can replicate data between Cloud Volumes ONTAP systems and ONTAP clusters by choosing a one-time data replication, which can help you move data to and from the cloud, or a recurring schedule, which can help with disaster recovery or long-term retention.

[Click here for more details.](#)

Backing up data

You can back up data from your on-premises ONTAP system to low-cost object storage in the cloud by using Cloud Backup. This service provides backup and restore capabilities for protection and long-term archive of your on-prem and cloud data.

[Click here for more details.](#)

Scan, map, and classify your data

Cloud Data Sense can scan your corporate on-premises clusters to map and classify data, and to identify

private information. This can help reduce your security and compliance risk, decrease storage costs, and assist with your data migration projects.

[Click here for more details.](#)

Tiering data to the cloud

Extend your data center to the cloud by automatically tiering inactive data from ONTAP clusters to object storage using Cloud Tiering.

[Click here for more details.](#)

Administer ONTAP using the Advanced View

If you need to perform advanced management of an ONTAP on-premises cluster, you can do so using ONTAP System Manager, which is a management interface that's provided with an ONTAP system. We have included the System Manager interface directly inside Cloud Manager so that you don't need to leave Cloud Manager for advanced management.

This Advanced View is available as a Preview. We plan to refine this experience and add enhancements in upcoming releases. Please send us feedback by using the in-product chat.

Features

The Advanced View in Cloud Manager gives you access to additional management features:

- Advanced storage management
Manage consistency groups, shares, qtrees, quotas, and Storage VMs.
- Networking management
Manage IPspaces, network interfaces, portsets, and ethernet ports.
- Events and jobs
View event logs, system alerts, jobs, and audit logs.
- Advanced data protection
Protect storage VMs, LUNs, and consistency groups.
- Host management
Set up SAN initiator groups and NFS clients.

Supported configurations

Advanced management through System Manager is supported with on-premises ONTAP clusters running 9.10.0 or later.

System Manager integration is not supported in GovCloud regions or in regions that have no outbound internet

access.

Limitations

A few System Manager features are not supported with on-premises ONTAP clusters when using the Advanced View in Cloud Manager:

- Cluster setup

After you set the management IP address and configure the admin password on an on-prem ONTAP cluster, you can discover the cluster in Cloud Manager and then continue cluster setup from the Advanced View.

- Cloud Backup activation

Enable Cloud Backup on an on-premises cluster directly from Cloud Backup. [Learn how to get started.](#)

- On-demand upgrades

On-demand upgrades of firmware and software are not available.

- Role-based access control

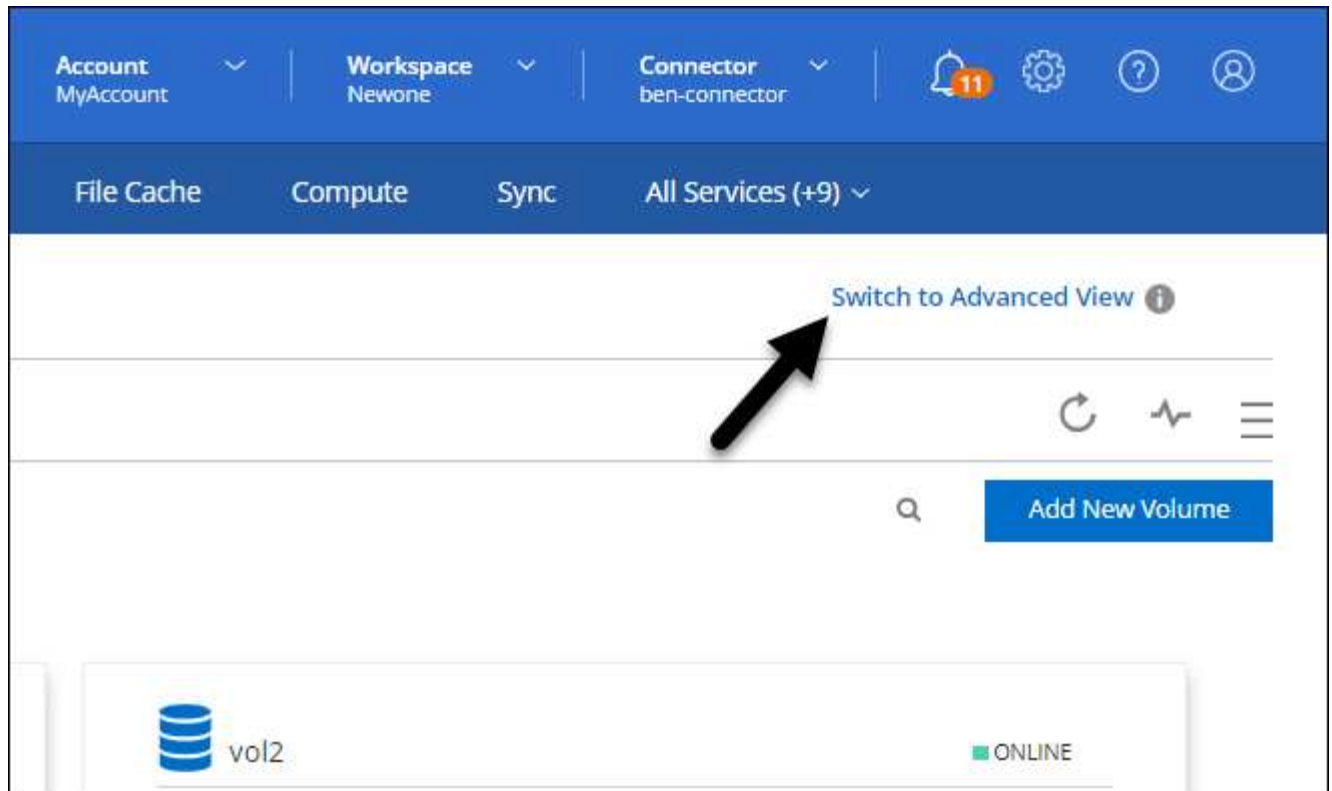
Role-based access control from System Manager is not supported.

How to get started

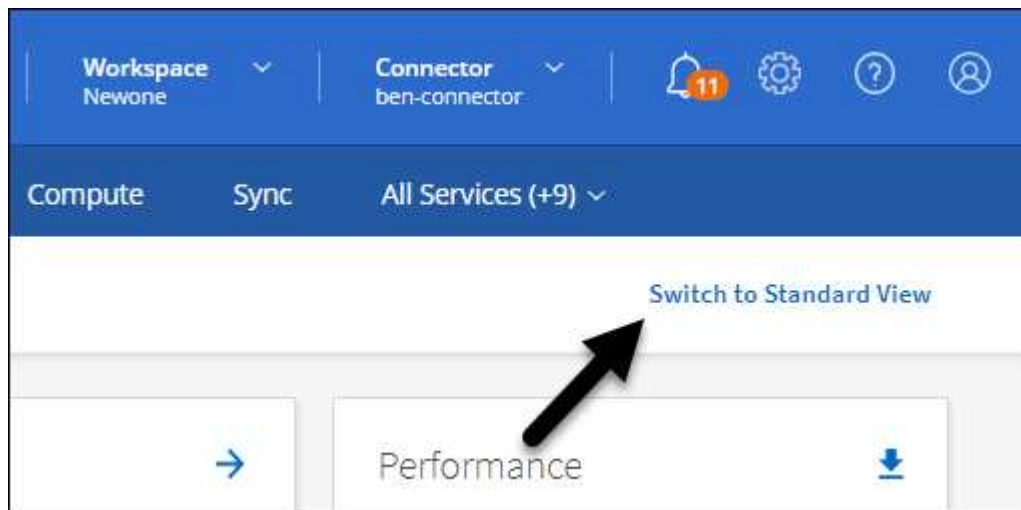
Open an on-premises ONTAP working environment and click the Advanced View option.

Steps

1. On the Canvas page, double-click the name of an on-premises ONTAP working environment.
2. In the top-right, click **Switch to Advanced View**.



3. If the confirmation message appears, read through it and click **Close**.
4. Use System Manager to manage ONTAP.
5. If needed, click **Switch to Standard View** to return to standard management through Cloud Manager.



Help with using System Manager

If you need help using System Manager with ONTAP, you can refer to [ONTAP documentation](#) for step-by-step instructions. Here are a few links that might help:

- [Volume and LUN management](#)
- [Network management](#)
- [Data protection](#)

Optimize your clusters using Active IQ Digital Advisor

[Active IQ Digital Advisor](#) is integrated into the Cloud Manager UI so that you can optimize the operations, security, and performance of your ONTAP clusters in a single pane of glass.

Features

You can view the overall status of your storage system, high-level information about the wellness of the system, inventory, planning, upgrades, and valuable insights at a watchlist level using Active IQ Digital Advisor.

- Analyze and optimize the health of your storage systems
- Gain insights regarding all the risks to your storage systems and the actions to mitigate the risks
- Analyze the performance of your storage devices by viewing the graphical format of performance data
- Get details about systems that have exceeded 90% capacity or are nearing 90% capacity
- Get information about the hardware and software that have expired or are near-expiration within the next 6 months
- Upgrade your storage system software, and update your ONTAP firmware using Ansible

Supported ONTAP systems

Active IQ Digital Advisor provides information for all the on-premises ONTAP systems and Cloud Volumes ONTAP systems within your NSS account.

Cost

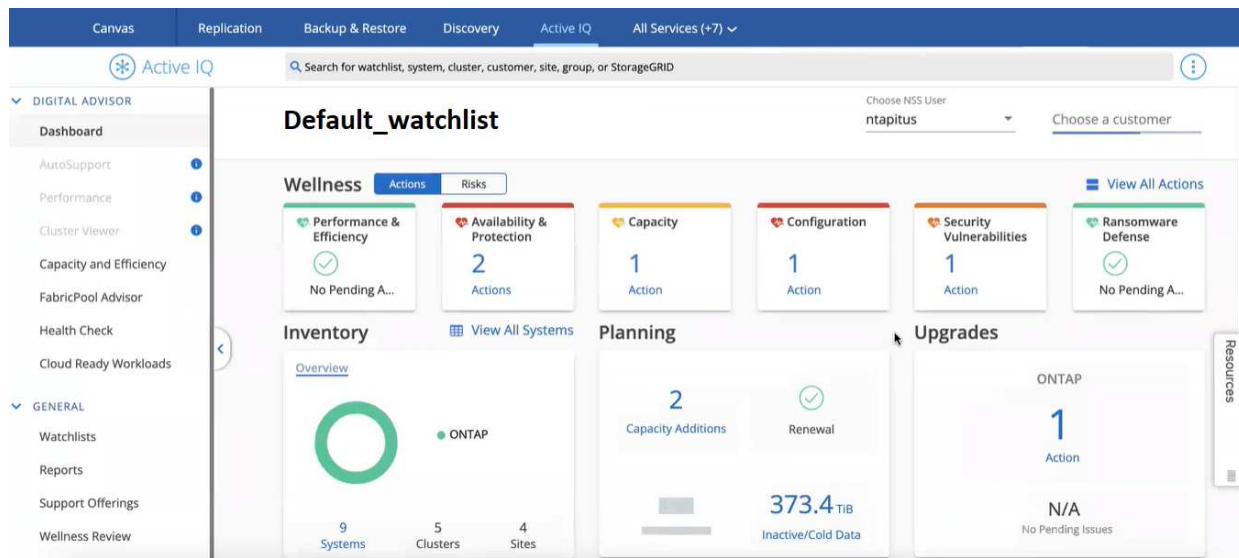
There's no cost to use this service through Cloud Manager.

How Active IQ Digital Advisor works with Cloud Manager

The Active IQ Digital Advisor user interface is completely integrated in Cloud Manager.

In Cloud Manager, click the **Active IQ** service.

- If you have already registered an existing NSS account in Cloud Manager, the Active IQ Digital Advisor UI appears just like you would see it in a standalone implementation at <https://activeiq.netapp.com/>.



- If you haven't registered an NSS account in Cloud Manager, [register an NSS account now](#) and then the Active IQ Digital Advisor UI appears.



As of December 2021, NetApp has switched to a new methodology of registering credentials for NSS accounts. [See this FAQ for details](#). If your NSS account uses the old set of credentials you will need to update the account to the new credentials.

What's next

See the [Active IQ Digital Advisor documentation](#) for details.

Using Active IQ data to manage ONTAP clusters

The Discovery page in Cloud Manager shows you any undiscovered ONTAP clusters in your on-premises environments, whether any clusters require updated disk or shelf firmware, and if you are using all the Cloud Volumes ONTAP licenses that you were granted when you purchased the on-prem systems. This information is provided to Cloud Manager from [Active IQ Digital Advisor](#).

Viewing unused Cloud Volumes ONTAP node-based licenses

Many on-premises ONTAP storage system packages that you purchased included a free Cloud Volumes ONTAP node-based license so you can try the NetApp cloud storage offerings in Cloud Manager. You can use the license to create a new Cloud Volumes ONTAP instance, or you can apply the license to an existing Cloud Volumes ONTAP instance to expand the capacity by 368 TiB.

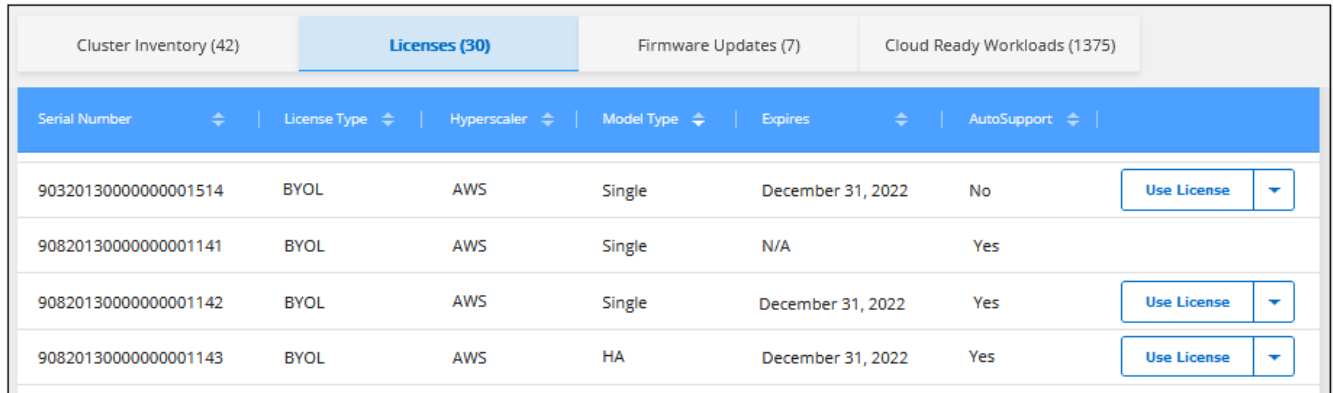
You can see whether you have any unused Cloud Volumes ONTAP licenses based on your NetApp Support Site credentials.



The term for a node-based license starts on the first day of the next month after the license was issued. For example, if you obtain a node-based BYOL license on Dec 15, 2021, the license term starts on Jan 1, 2022 (the first day of the next month).

Steps

1. In Cloud Manager, click the **Discovery** tab.
2. Click the **Licenses** tab in the lower portion of the page.



Serial Number	License Type	Hyperscaler	Model Type	Expires	AutoSupport	
90320130000000001514	BYOL	AWS	Single	December 31, 2022	No	Use License
90820130000000001141	BYOL	AWS	Single	N/A	Yes	
90820130000000001142	BYOL	AWS	Single	December 31, 2022	Yes	Use License
90820130000000001143	BYOL	AWS	HA	December 31, 2022	Yes	Use License

A **Use License** button appears for each unused license.

3. If you want to activate and start using the license, click **Use License**.



See the tasks below to learn about the options for using the available licenses.

Using unused Cloud Volumes ONTAP licenses

You can use unused licenses to create a new Cloud Volumes ONTAP instance or to extend the capacity of the license on an existing Cloud Volumes ONTAP instance. The capacity of the license is 368 TiB.

The *Expires* column indicates the last day the license is active. When creating a new Cloud Volumes ONTAP system this is the date the license expires. When updating an existing Cloud Volumes ONTAP system this indicates the length of time the existing license is extended.

The *License Type*, *Hyperscaler*, and *Model Type* columns describe the type of Cloud Volumes ONTAP license it is. For example, **BYOL | Single | Azure** means the license is a "bring-your-own" license for a "single node" Cloud Volumes ONTAP system deployed in "Microsoft Azure". The values that can appear in this column are shown in the table.

Column	Values
License Type	PAYGO BYOL
Hyperscaler	Azure AWS GCP All Providers

Column	Values
Model Type	Single HA

When creating a *new* Cloud Volumes ONTAP system, this is the type of system you are deploying. For example, using the sample license (**BYOL | Single | Azure**), you can create a single-node Cloud Volumes ONTAP system in Azure with entitlement for up to 368 TiB. This license can't be used to create an HA system or to deploy an instance in AWS.

When updating an *existing* Cloud Volumes ONTAP system, this indicates the type of system that can have the capacity for its existing license extended. Using the sample license again, you can extend the license for any single-node Cloud Volumes ONTAP system in Azure. This license can't be used to extend the license for an HA system or for an instance deployed in AWS.

Creating a new Cloud Volumes ONTAP system with the unused license

Follow these steps to create a new Cloud Volumes ONTAP instance with the unused license.

Steps

1. Click **Use License** and select **Use License for a new Cloud Volumes ONTAP**.
2. In the "Use License..." page, verify the license information and click **Use License**.

In most cases you will be directed to the **Details & Credentials** page for creating the working environment for the Cloud Volumes ONTAP system because both the cloud provider and number of nodes are defined by the license.

If you are using a license defined as "All Providers", then you are directed to the **Choose a Location** page so you can pick the cloud provider first, before completing the **Details & Credentials** page.

3. Follow the steps to create the working environment and your first volume.

See the following sections depending on the cloud provider on which you are deploying the Cloud Volumes ONTAP system.

- [Launching Cloud Volumes ONTAP in Azure](#)
- [Launching Cloud Volumes ONTAP in AWS](#)
- [Launching Cloud Volumes ONTAP in GCP](#)

Extending the license capacity for an existing Cloud Volumes ONTAP system

If you have a currently deployed Cloud Volumes ONTAP system that matches the license requirements of one of the free licenses (meaning the same cloud provider, number of nodes, etc.), you can follow these steps to extend the capacity of the license by 368 TiB.

Steps

1. Click **Use License** and select **Add License to existing Cloud Volumes ONTAP**.

Add License to Existing Cloud Volumes ONTAP

License Information

90419737477578510576	BYOL	AWS	Single
Serial Number	License Type	Provider	Cloud Volumes ONTAP

Select Cloud Volumes ONTAP

Cloud_Volumes_ONTAP_001 | AWS | Single

Note: Only Cloud Volumes ONTAP systems that match the license parameters are displayed.

Add License **Close**

- In the "Add License..." page, select the Cloud Volumes ONTAP system where you want to extend the license and click **Add License**.

A confirmation dialog is displayed.

Add License to Existing Cloud Volumes ONTAP

License added Successfully

License: 90419737477578510576 (BYOL | AWS | Single)
added successfully to Cloud Volumes ONTAP "Cloud_Volumes_ONTAP_Name"

[Go to "Cloud_Volumes_ONTAP_Name" License Page](#)

Close

- You can click **Close** to close the window and return to the Discovery page, or you can click the link to go to the Cloud Volumes ONTAP Licensing page to view more details about licensing for that system.

Downloading new disk and shelf firmware

You can see whether any of your discovered ONTAP clusters need to have their shelf or disk firmware updated. And you can download the Ansible playbook to upgrade the firmware.

Note: The ability to view and download new firmware is available only when you have subscribed to certain support plans.

Steps

1. From the Discovery page, click the **Firmware Updates** tab.

Cluster Name	Cluster Status	Disk Firmware	Shelf Firmware
durbkpcclu99	Undiscovered	Update Available	No Updates Available
durdevnasclu01	Undiscovered	Update Available	No Updates Available
durlabdevclu01	Discovered	No Updates Available	No Updates Available
blrprdcclu02	Undiscovered	No Updates Available	No Updates Available

If any cluster require new firmware, a **Download All** button appears.

2. Click **Download All** and save the zip file.

3. Unzip the zip file and see the following instructions to [update your storage system firmware](#).

Result

Your firmware is updated. The next time your ONTAP system sends an AutoSupport message to Active IQ, the status in the *Firmware Updates* page will be updated to show that updates are no longer needed.

Viewing on-prem workloads that are candidates for the cloud

Certain workloads or volumes are ideal to move to a Cloud Volumes ONTAP system from your on-prem ONTAP clusters. Some of the advantages include reduced costs and improved performance and resiliency. The *Cloud Ready Workloads* tab provides a list of these workloads from your discovered ONTAP clusters.

Cluster Name	Cluster Status	SVM Name	Volume Name	Workload Type
hioprdcclu02	Undiscovered	vsvhiopax01prd	volpaxprd_hanabackup01	SAP HANA
hioprdcclu02	Undiscovered	svmhiodcb02prd	volcdbprd_sqluserdata01	MSSQL
durdevclu02	Discovered	vsvdurpax01spd	volpaxdev_hana_data	SAP HANA
durdevclu02	Discovered	vsvdurpax01spd	volpaxstg_hana_backup	SAP HANA
durdevclu02	Discovered	vsvdurerp01spd	xdperpspd_oradata02	ORACLE

The supported workloads that are called out on this page include: SAP, SAP HANA, Oracle, File share, and SharePoint.

Lift and shift is an approach for migrating your apps to the cloud. It means moving an application and its associated data to a cloud platform without redesigning the app. See more information about [lift and shift](#).

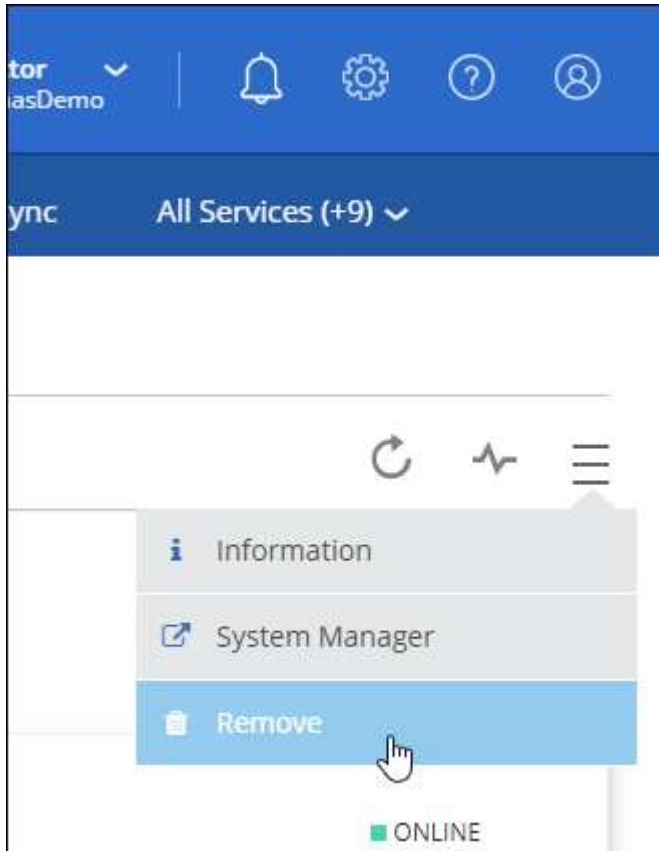
Remove an on-prem ONTAP working environment

Remove an on-premises ONTAP working environment if you no longer want to manage it from Cloud Manager.

Removing the working environment doesn't affect the ONTAP cluster. You can rediscover it from Cloud Manager at any time.

Steps

1. On the Canvas page, double-click the name of the on-premises ONTAP working environment.
2. Click the menu icon and select **Remove**.



3. Click **Remove** to confirm.

Copyright Information

Copyright © 2022 NetApp, Inc. All rights reserved. Printed in the U.S. No part of this document covered by copyright may be reproduced in any form or by any means-graphic, electronic, or mechanical, including photocopying, recording, taping, or storage in an electronic retrieval system-without prior written permission of the copyright owner.

Software derived from copyrighted NetApp material is subject to the following license and disclaimer:

THIS SOFTWARE IS PROVIDED BY NETAPP "AS IS" AND WITHOUT ANY EXPRESS OR IMPLIED WARRANTIES, INCLUDING, BUT NOT LIMITED TO, THE IMPLIED WARRANTIES OF MERCHANTABILITY AND FITNESS FOR A PARTICULAR PURPOSE, WHICH ARE HEREBY DISCLAIMED. IN NO EVENT SHALL NETAPP BE LIABLE FOR ANY DIRECT, INDIRECT, INCIDENTAL, SPECIAL, EXEMPLARY, OR CONSEQUENTIAL DAMAGES (INCLUDING, BUT NOT LIMITED TO, PROCUREMENT OF SUBSTITUTE GOODS OR SERVICES; LOSS OF USE, DATA, OR PROFITS; OR BUSINESS INTERRUPTION) HOWEVER CAUSED AND ON ANY THEORY OF LIABILITY, WHETHER IN CONTRACT, STRICT LIABILITY, OR TORT (INCLUDING NEGLIGENCE OR OTHERWISE) ARISING IN ANY WAY OUT OF THE USE OF THIS SOFTWARE, EVEN IF ADVISED OF THE POSSIBILITY OF SUCH DAMAGE.

NetApp reserves the right to change any products described herein at any time, and without notice. NetApp assumes no responsibility or liability arising from the use of products described herein, except as expressly agreed to in writing by NetApp. The use or purchase of this product does not convey a license under any patent rights, trademark rights, or any other intellectual property rights of NetApp.

The product described in this manual may be protected by one or more U.S. patents, foreign patents, or pending applications.

RESTRICTED RIGHTS LEGEND: Use, duplication, or disclosure by the government is subject to restrictions as set forth in subparagraph (c)(1)(ii) of the Rights in Technical Data and Computer Software clause at DFARS 252.277-7103 (October 1988) and FAR 52-227-19 (June 1987).

Trademark Information

NETAPP, the NETAPP logo, and the marks listed at <http://www.netapp.com/TM> are trademarks of NetApp, Inc. Other company and product names may be trademarks of their respective owners.