



Managing sync relationships

Cloud Sync

Ben Cammett
April 11, 2021

Table of Contents

- Managing sync relationships 1
 - Performing an immediate data sync 1
 - Accelerating sync performance 1
 - Changing the settings for a sync relationship 2
 - Creating and viewing reports about paths 4
 - Deleting relationships 6

Managing sync relationships

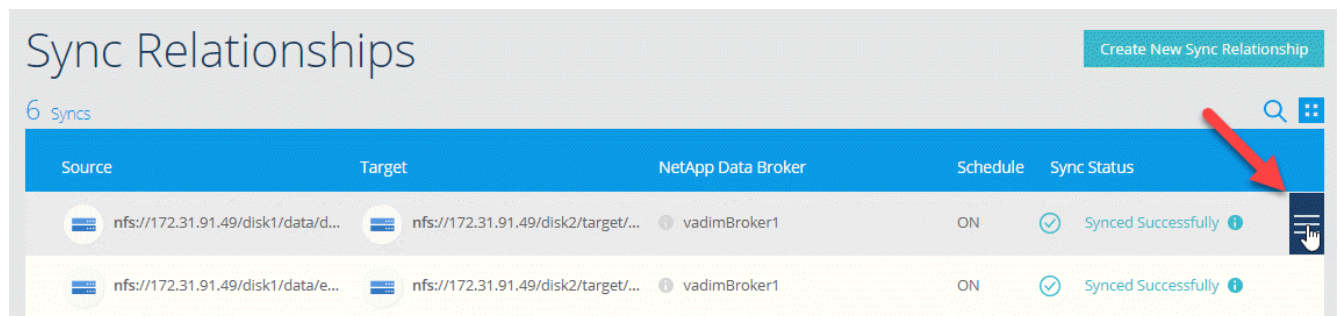
You can manage sync relationships at any time by immediately syncing data, changing schedules, and more.

Performing an immediate data sync

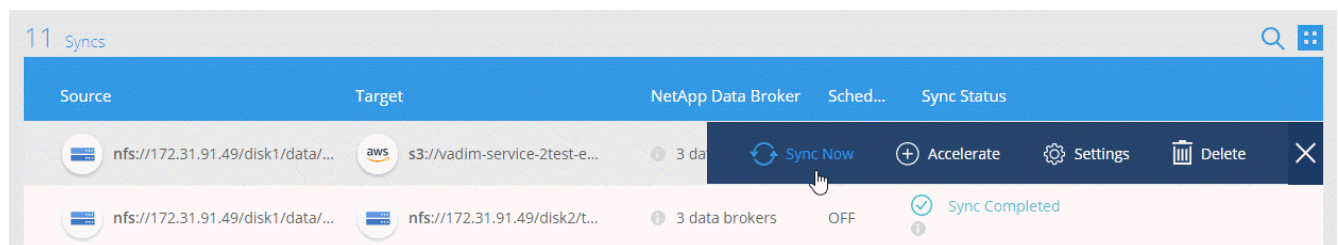
Rather than wait for the next scheduled sync, you can press a button to immediately sync data between the source and target.

Steps

1. Hover over the sync relationship and click the action menu.



2. Click **Sync Now** and then click **Sync** to confirm.



Result

Cloud Sync starts the data sync process for the relationship.

Accelerating sync performance

Accelerate the performance of a sync relationship by adding an additional data broker to the relationship. The additional data broker must be a *new* data broker.

How this works

If the existing data brokers in the relationship are used in other sync relationships, then Cloud Sync automatically adds the new data broker to those relationships, as well.

For example, let's say you have three relationships:

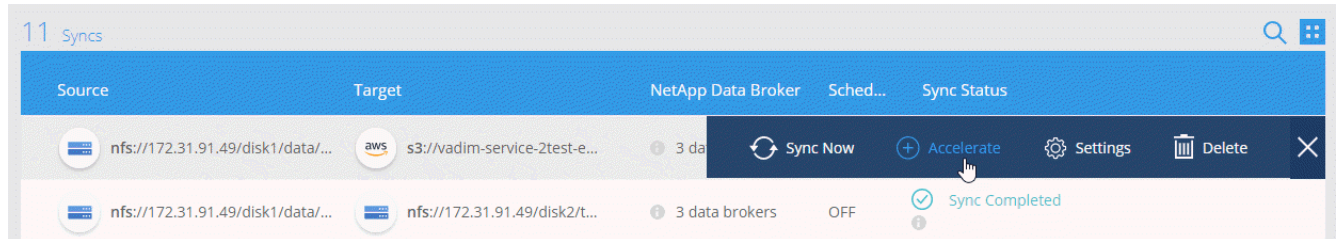
- Relationship 1 uses data broker A
- Relationship 2 uses data broker B

- Relationship 3 uses data broker A

You want to accelerate the performance of relationship 1 so you add a new data broker to that relationship (data broker C). Because data broker A is also used in relationship 3, the new data broker is automatically added to relationship 3, as well.

Steps

1. Go to the **Sync Relationships** dashboard.
2. Ensure that at least one of the existing data brokers in the relationship are online.
3. Hover over the sync relationship and click the action menu.
4. Click **Accelerate**.



5. Follow the prompts to create a new data broker.

Result

Cloud Sync adds the new data broker to the sync relationships. The performance of the next data sync should be accelerated.

Changing the settings for a sync relationship

Modify settings that define how source files and folders are synced and maintained in the target location.

1. Hover over the sync relationship and click the action menu.
2. Click **Settings**.
3. Modify any of the settings.

General

Schedule	ON Every 1 Day	▼
Retries	Retry 3 times before skipping file	▼

Files and Directories

Recently Modified Files	Exclude files that are modified up to 30 Seconds before a scheduled sync	▼
Delete Files On Source	Never delete files from the source location	▼
Delete Files On Target	Never delete files from the target location	▼
Object Tagging	Allow Cloud Sync to tag S3 objects	▼
File Types	Include All: Files, Directories, Symbolic Links	▼
Exclude File Extensions	None	▼
File Size	All	▼
Date Modified	All	▼

[Reset to defaults](#)

Here's a brief description of each setting:

Schedule

Choose a recurring schedule for future syncs or turn off the sync schedule. You can schedule a relationship to sync data as often as every 1 minute.

Retries

Define the number of times that Cloud Sync should retry to sync a file before skipping it.

Recently Modified Files

Choose to exclude files that were recently modified prior to the scheduled sync.

Delete Files on Source

Choose to delete files from the source location after Cloud Sync copies the files to the target location. This option includes the risk of data loss because the source files are deleted after they're copied.

If you enable this option, you also need to change a parameter in the local.json file on the data broker. Open the file and change the parameter named *workers.transferrer.delete-on-source* to **true**.

Delete Files on Target

Choose to delete files from the target location, if they were deleted from the source. The default is to never delete files from the target location.

Object tagging

When AWS S3 is the target in a sync relationship, Cloud Sync tags S3 objects with metadata that's relevant to the sync operation. You can disable tagging of S3 objects, if it's not desired in your environment. There's no impact to Cloud Sync if you disable tagging—Cloud Sync just stores the sync metadata in a different way.

File Types

Define the file types to include in each sync: files, directories, and symbolic links.

Exclude File Extensions

Specify file extensions to exclude from the sync by typing the file extension and pressing **Enter**. For example, type *log* or *.log* to exclude *.log files. A separator isn't required for multiple extensions. The following video provides a short demo:

▶ https://docs.netapp.com/us-en/cloudsync//media/video_file_extensions.mp4 (video)

File Size

Choose to sync all files regardless of their size or just files that are in a specific size range.

Date Modified

Choose all files regardless of their last modified date, files modified after a specific date, before a specific date, or between a time range.

Copy Access Control Lists to the target

Choose to copy access control lists (ACLs) between source SMB shares and target SMB shares. Note that this option is only available for sync relationships created after the 23 Feb 2020 release.

4. Click **Save Settings**.

Result

Cloud Sync modifies the sync relationship with the new settings.

Creating and viewing reports about paths

Create and view reports to get information that you can use with the help of NetApp personnel to tune a data broker's configuration and improve performance.

Each report provides in-depth details about a path in a sync relationship. For example, the report for a file system shows how many directories and files there are, the distribution of file size, how deep and wide the directories are, and more.

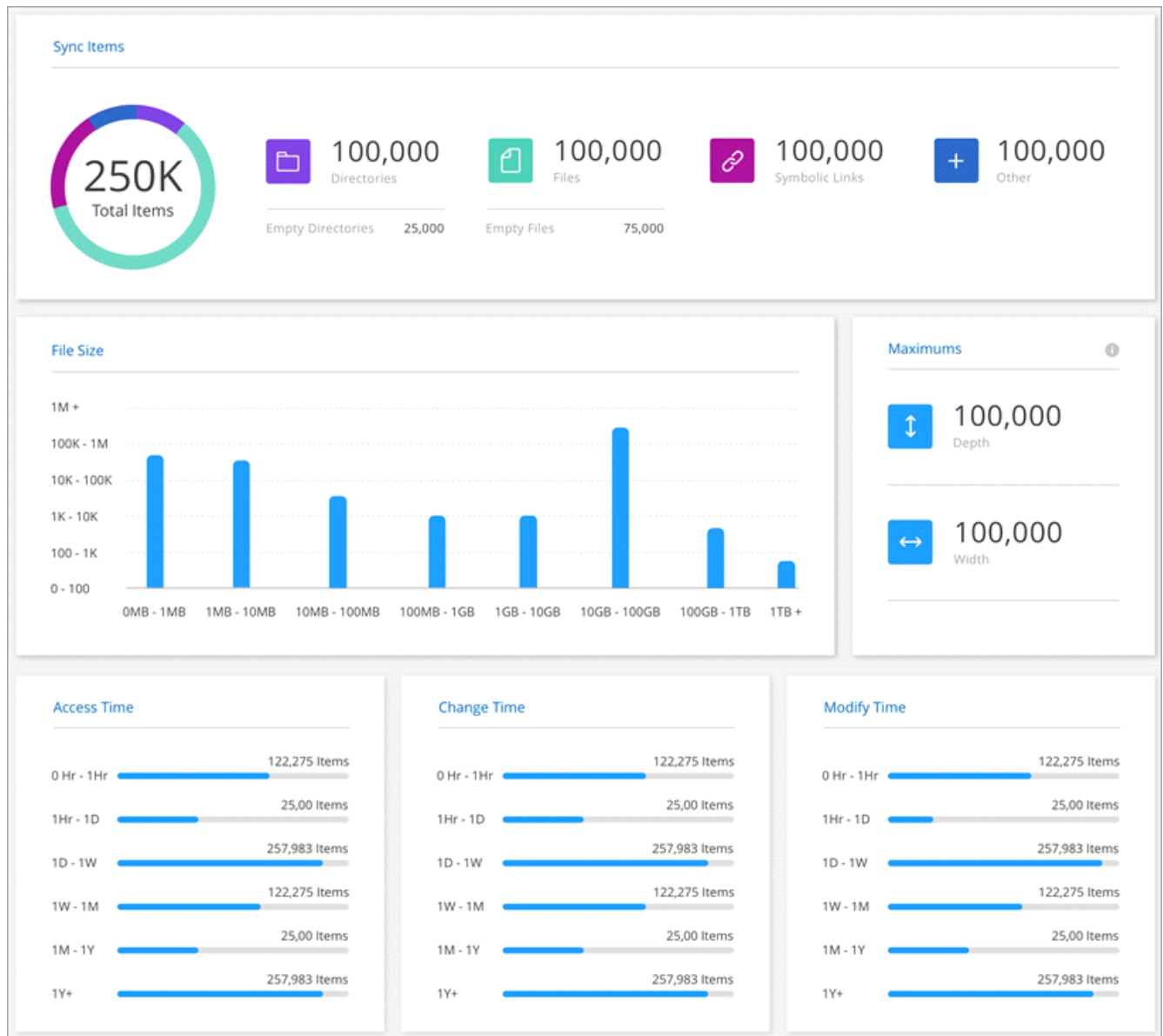
Steps

1. Click **Reports**.

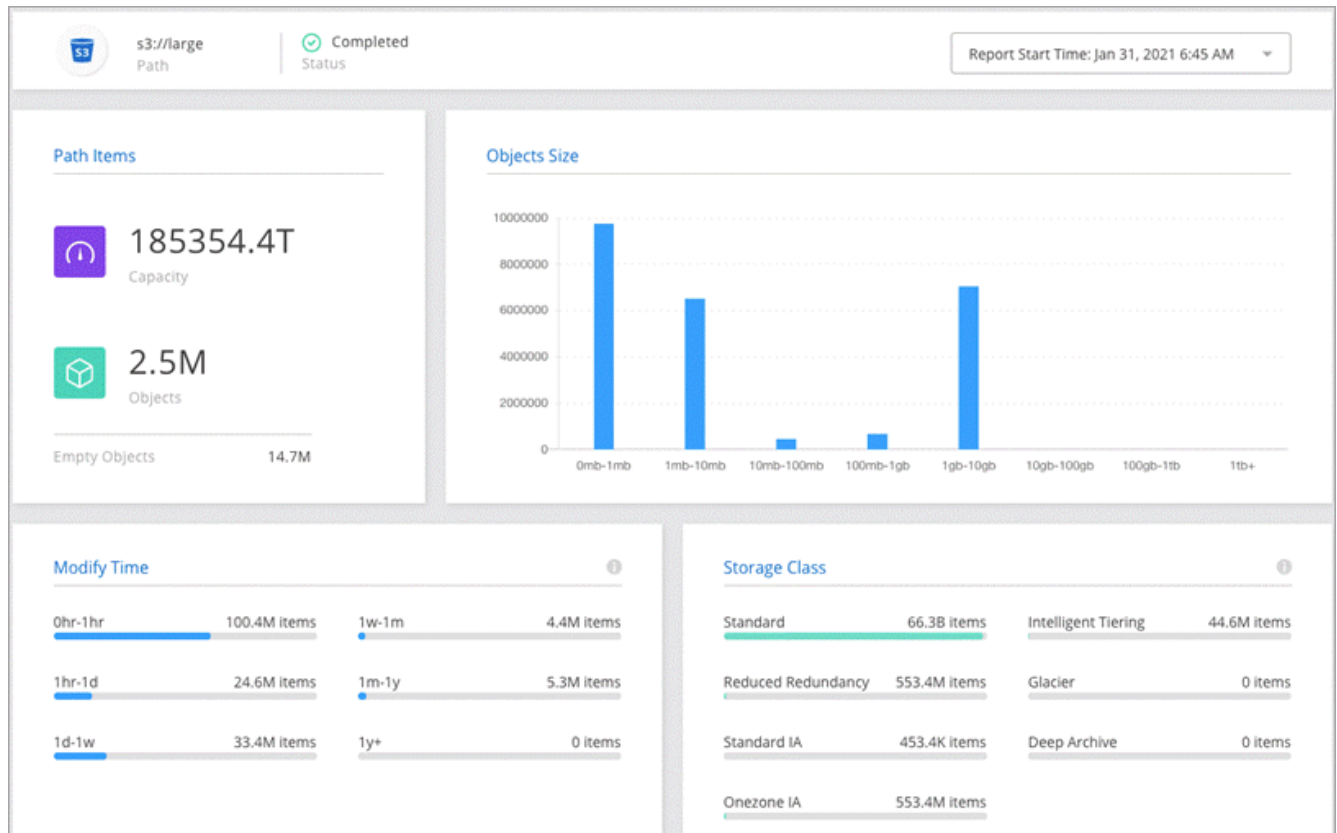
The paths (source or target) in each of your sync relationships display in a table.

2. In the **Reports** column, click **Create New** for a path.
3. When the report is ready, click **View**.

Here's a sample report for a file system path.



And here's a sample report for object storage.



Deleting relationships

You can delete a sync relationship, if you no longer need to sync data between the source and target. This action does not delete the data broker instance and it does not delete data from the target.

Steps

1. Hover over the sync relationship and click the action menu.
2. Click **Delete** and then click **Delete** again to confirm.

Result

Cloud Sync deletes the sync relationship.

Copyright Information

Copyright © 2021 NetApp, Inc. All rights reserved. Printed in the U.S. No part of this document covered by copyright may be reproduced in any form or by any means-graphic, electronic, or mechanical, including photocopying, recording, taping, or storage in an electronic retrieval system-without prior written permission of the copyright owner.

Software derived from copyrighted NetApp material is subject to the following license and disclaimer:

THIS SOFTWARE IS PROVIDED BY NETAPP "AS IS" AND WITHOUT ANY EXPRESS OR IMPLIED WARRANTIES, INCLUDING, BUT NOT LIMITED TO, THE IMPLIED WARRANTIES OF MERCHANTABILITY AND FITNESS FOR A PARTICULAR PURPOSE, WHICH ARE HEREBY DISCLAIMED. IN NO EVENT SHALL NETAPP BE LIABLE FOR ANY DIRECT, INDIRECT, INCIDENTAL, SPECIAL, EXEMPLARY, OR CONSEQUENTIAL DAMAGES (INCLUDING, BUT NOT LIMITED TO, PROCUREMENT OF SUBSTITUTE GOODS OR SERVICES; LOSS OF USE, DATA, OR PROFITS; OR BUSINESS INTERRUPTION) HOWEVER CAUSED AND ON ANY THEORY OF LIABILITY, WHETHER IN CONTRACT, STRICT LIABILITY, OR TORT (INCLUDING NEGLIGENCE OR OTHERWISE) ARISING IN ANY WAY OUT OF THE USE OF THIS SOFTWARE, EVEN IF ADVISED OF THE POSSIBILITY OF SUCH DAMAGE.

NetApp reserves the right to change any products described herein at any time, and without notice. NetApp assumes no responsibility or liability arising from the use of products described herein, except as expressly agreed to in writing by NetApp. The use or purchase of this product does not convey a license under any patent rights, trademark rights, or any other intellectual property rights of NetApp.

The product described in this manual may be protected by one or more U.S. patents, foreign patents, or pending applications.

RESTRICTED RIGHTS LEGEND: Use, duplication, or disclosure by the government is subject to restrictions as set forth in subparagraph (c)(1)(ii) of the Rights in Technical Data and Computer Software clause at DFARS 252.277-7103 (October 1988) and FAR 52-227-19 (June 1987).

Trademark Information

NETAPP, the NETAPP logo, and the marks listed at <http://www.netapp.com/TM> are trademarks of NetApp, Inc. Other company and product names may be trademarks of their respective owners.