



Operation Management

HCI

NetApp
October 20, 2020

Table of Contents

Operation Management 1
 Cloud Insights 1

Operation Management

With NetApp VDS, administrators can delegate tasks to others. They can connect to deployed servers to troubleshoot, view logs, and run audit reports. While assisting customers, helpdesk or level-3 technicians can shadow user sessions, view process lists, and kill processes if required.

For information on VDS logfiles, see the [Troubleshooting Failed VDA Actions](#) page.

For more information on the required minimum permissions, see the [VDA Components and Permissions](#) page.

If you would like to manually clone a server, see the [Cloning Virtual Machines](#) page.

To automatically increase the VM disk size, see the [Auto-Increase Disk Space Feature](#) page.

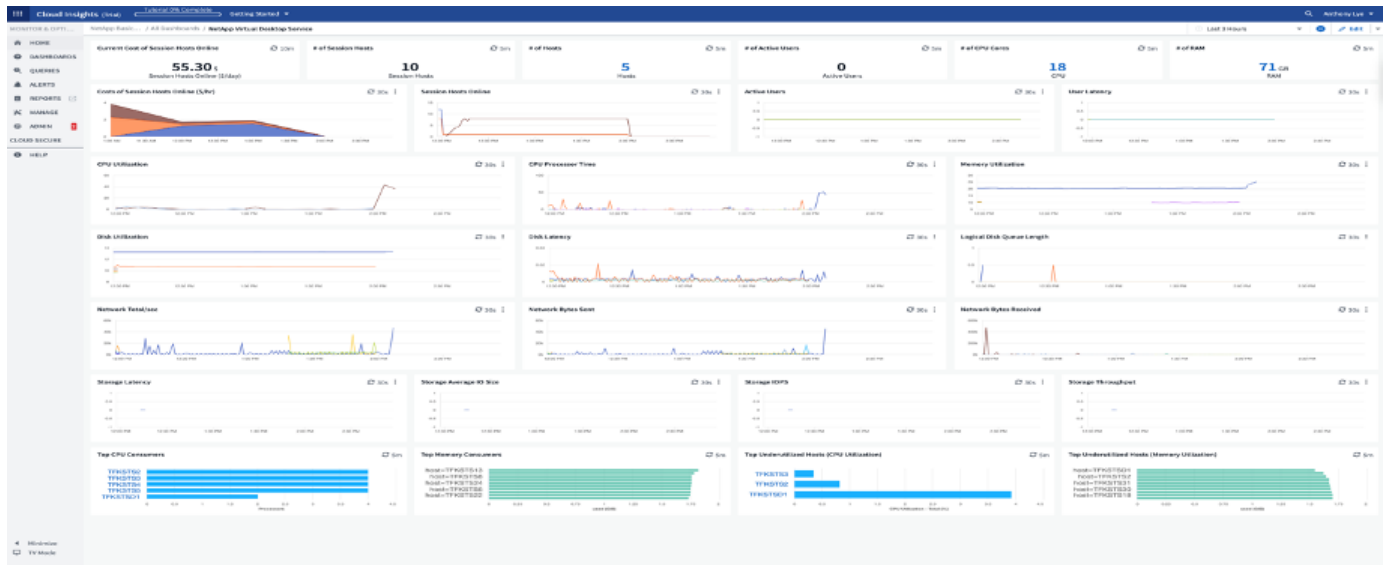
To identify the gateway address to manually configure the client, see the [End User Requirements](#) page.

Cloud Insights

NetApp Cloud Insights is a web-based monitoring tool that gives you complete visibility into infrastructure and applications running on NetApp and other third-party infrastructure components. Cloud Insights supports both private cloud and public clouds for monitoring, troubleshooting, and optimizing resources.

Only the acquisition unit VM (can be Windows or Linux) must be installed on a private cloud to collect metrics from data collectors without the need for agents. Agent-based data collectors allow you to pull custom metrics from Windows Performance Monitor or any input agents that Telegraf supports.

The following figure depicts the Cloud Insights VDS dashboard.



For more info on NetApp Cloud Insights, see [this video](#).

Next: [Tools and Logs](#)

Copyright Information

Copyright © 2021 NetApp, Inc. All rights reserved. Printed in the U.S. No part of this document covered by copyright may be reproduced in any form or by any means-graphic, electronic, or mechanical, including photocopying, recording, taping, or storage in an electronic retrieval system-without prior written permission of the copyright owner.

Software derived from copyrighted NetApp material is subject to the following license and disclaimer:

THIS SOFTWARE IS PROVIDED BY NETAPP "AS IS" AND WITHOUT ANY EXPRESS OR IMPLIED WARRANTIES, INCLUDING, BUT NOT LIMITED TO, THE IMPLIED WARRANTIES OF MERCHANTABILITY AND FITNESS FOR A PARTICULAR PURPOSE, WHICH ARE HEREBY DISCLAIMED. IN NO EVENT SHALL NETAPP BE LIABLE FOR ANY DIRECT, INDIRECT, INCIDENTAL, SPECIAL, EXEMPLARY, OR CONSEQUENTIAL DAMAGES (INCLUDING, BUT NOT LIMITED TO, PROCUREMENT OF SUBSTITUTE GOODS OR SERVICES; LOSS OF USE, DATA, OR PROFITS; OR BUSINESS INTERRUPTION) HOWEVER CAUSED AND ON ANY THEORY OF LIABILITY, WHETHER IN CONTRACT, STRICT LIABILITY, OR TORT (INCLUDING NEGLIGENCE OR OTHERWISE) ARISING IN ANY WAY OUT OF THE USE OF THIS SOFTWARE, EVEN IF ADVISED OF THE POSSIBILITY OF SUCH DAMAGE.

NetApp reserves the right to change any products described herein at any time, and without notice. NetApp assumes no responsibility or liability arising from the use of products described herein, except as expressly agreed to in writing by NetApp. The use or purchase of this product does not convey a license under any patent rights, trademark rights, or any other intellectual property rights of NetApp.

The product described in this manual may be protected by one or more U.S. patents, foreign patents, or pending applications.

RESTRICTED RIGHTS LEGEND: Use, duplication, or disclosure by the government is subject to restrictions as set forth in subparagraph (c)(1)(ii) of the Rights in Technical Data and Computer Software clause at DFARS 252.277-7103 (October 1988) and FAR 52-227-19 (June 1987).

Trademark Information

NETAPP, the NETAPP logo, and the marks listed at <http://www.netapp.com/TM> are trademarks of NetApp, Inc. Other company and product names may be trademarks of their respective owners.