



Upgrade the Element Plug-in for vCenter Server

HCI

Paula Carrigan, Dave Bagwell, dbag-personal, Ann-Marie Grissino, amitha
October 13, 2021

Table of Contents

Upgrade the Element Plug-in for vCenter Server 1

Upgrade the Element Plug-in for vCenter Server

For existing vSphere environments with a registered NetApp Element Plug-in for vCenter Server (VCP), you can update your plug-in registration after you first update the management services package that contains the plug-in service.

You can update the plug-in registration on vCenter Server Virtual Appliance (vCSA) or Windows using the registration utility. You must change your registration for the vCenter Plug-in on every vCenter Server where you need to use the plug-in.

This upgrade procedure covers the following upgrade scenarios:

- You are upgrading to VCP 4.8, 4.7, 4.6, 4.5, or 4.4.
- You are upgrading to a 7.0, 6.7, or 6.5 HTML5 vSphere Web Client.



The plug-in is not compatible with VMware vCenter Server 6.5 for VCP 4.7 and later.

- You are upgrading to a 6.7 Flash vSphere Web Client.



The plug-in is not compatible with version 6.7 U2 build 13007421 of the HTML5 vSphere Web Client and other 6.7 U2 builds released prior to update 2a (build 13643870). For more information about supported vSphere versions, see the release notes for [your version of the plug-in](#).

What you'll need

- **Admin privileges:** You have vCenter Administrator role privileges to install a plug-in.
- **vSphere upgrades:** You have performed any required vCenter upgrades before upgrading the NetApp Element Plug-in for vCenter Server. This procedure assumes that vCenter upgrades have already been completed.
- **vCenter Server:** Your vCenter Plug-in version 4.x is registered with a vCenter Server. From the registration utility ([https://\[management node IP\]:9443](https://[management node IP]:9443)), click **Registration Status**, complete the necessary fields, and click **Check Status** to verify that the vCenter Plug-in is already registered and the version number of the current installation.
- **Management services updates:** You have updated your [management services bundle](#) to the latest version. Updates to the vCenter plug-in are distributed using management services updates that are released outside of major product releases for NetApp HCI and SolidFire all-flash storage.
- **Management node upgrades:** You are running a management node that has been [upgraded](#) to version 11.3 or later. vCenter Plug-in 4.4 or later requires a an 11.3 or later management node with a modular architecture that provides individual services. Your management node must be powered on with its IP address or DHCP address configured.
- **Element storage upgrades:** You have a cluster running NetApp Element software 11.3 or later.
- **vSphere Web Client:** You have logged out of the vSphere Web Client before beginning any plug-in upgrade. The web client will not recognize updates made during this process to your plug-in if you do not log out.

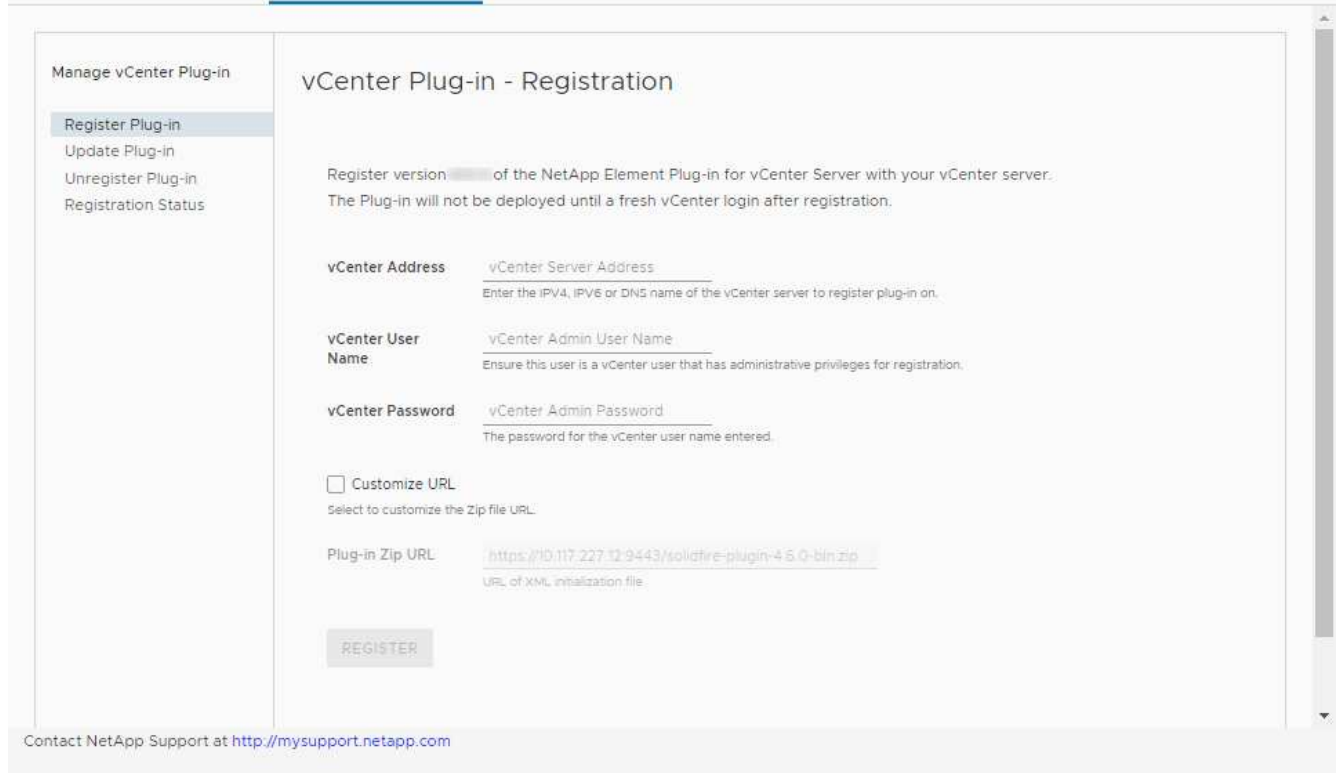
Steps

1. Enter the IP address for your management node in a browser, including the TCP port for registration:
`https://[management node IP]:9443`

The registration utility UI opens to the **Manage QoSSIOC Service Credentials** page for the plug-in.

The screenshot shows the NetApp Element Plug-in for vCenter Server Management Node interface. The top navigation bar includes the NetApp logo and the text "Element Plug-in for vCenter Server Management Node". Below this, there are two tabs: "QoSSIOC Service Management" and "vCenter Plug-in Registration". The main content area is titled "Manage QoSSIOC Service Credentials". On the left, there is a sidebar with "QoSSIOC Management" and two options: "Manage Credentials" (which is highlighted) and "Restart QoSSIOC Service". The main form contains three password fields: "Old Password" (Current password), "New Password" (New password), and "Confirm Password" (Confirm New Password). Each field has a label and a description of the password requirements. The "New Password" field has a detailed requirement: "Must contain at least 8 characters with at least one lower-case and upper-case alphabet, a number and a special character like #\$\$%&'()*-/+!@^*_". A "SUBMIT CHANGES" button is located at the bottom of the form. At the bottom of the page, there is a footer with the text "Contact NetApp Support at <http://mysupport.netapp.com>".

2. Click **vCenter Plug-in Registration**.



3. Within **Manage vCenter Plug-in**, select **Update Plug-in**.

4. Confirm or update the following information:

- a. The IPv4 address or the FQDN of the vCenter service on which you will register your plug-in.
- b. The vCenter Administrator user name.



The user name and password credentials you enter must be for a user with vCenter Administrator role privileges.

- c. The vCenter Administrator password.
- d. (For in-house servers/dark sites) A custom URL for the plug-in ZIP.



You can click **Custom URL** to customize the URL if you are using an HTTP or HTTPS server (dark site) or have modified the ZIP file name or network settings. For additional configuration steps if you intend to customize a URL, see Element Plug-in for vCenter Server documentation about modifying vCenter properties for an in-house (dark site) HTTP server.

5. Click **Update**.

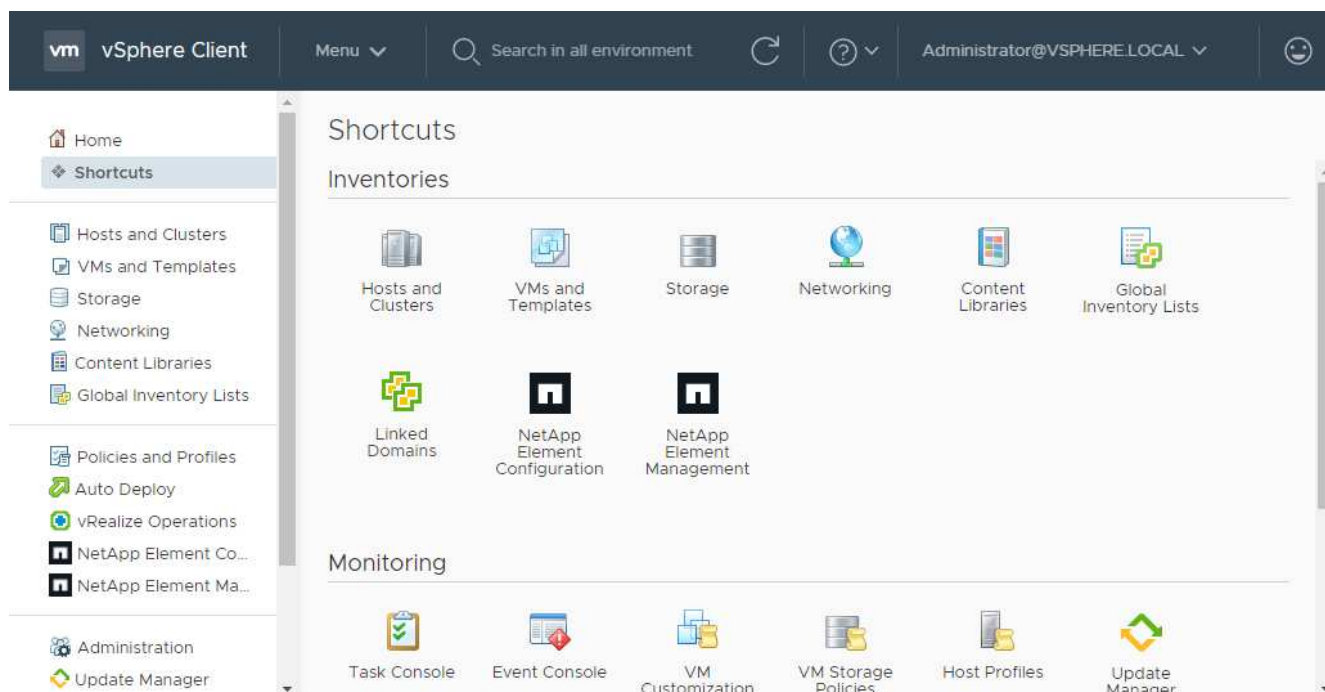
A banner appears in the registration utility UI when the registration is successful.

6. Log in to the vSphere Web Client as a vCenter Administrator. If you are already logged in to the vSphere Web Client, you must first log out, wait two to three minutes, and then log in again.



This action creates a new database and completes the installation in the vSphere Web Client.

- In the vSphere Web Client, look for the following completed tasks in the task monitor to ensure installation has completed: `Download plug-in` and `Deploy plug-in`.
- Verify that the NetApp Element Configuration and Management extension points appear in the **Shortcuts** tab of the vSphere Web Client and in the side panel.



If the vCenter Plug-in icons are not visible, see [Element Plug-in for vCenter Server](#) documentation about troubleshooting the plug-in.



After you upgrade to VCP 4.8 with VMware vCenter Server 6.7U1, if the storage clusters are not listed or a server error appears in the **Clusters** and **QoSSIOC Settings** sections of the NetApp Element Configuration, see [Element Plug-in for vCenter Server](#) documentation about troubleshooting these errors.

- Verify the version change in the **About** tab in the **NetApp Element Configuration** extension point of the plug-in.

You should see the following version details or details of a more recent version:

```
NetApp Element Plug-in Version: 4.8
NetApp Element Plug-in Build Number: 34
```



The vCenter Plug-in contains online Help content. To ensure that your Help contains the latest content, clear your browser cache after upgrading your plug-in.

Find more information

- [NetApp Element Plug-in for vCenter Server](#)
- [NetApp HCI Resources Page](#)

Copyright Information

Copyright © 2021 NetApp, Inc. All rights reserved. Printed in the U.S. No part of this document covered by copyright may be reproduced in any form or by any means-graphic, electronic, or mechanical, including photocopying, recording, taping, or storage in an electronic retrieval system-without prior written permission of the copyright owner.

Software derived from copyrighted NetApp material is subject to the following license and disclaimer:

THIS SOFTWARE IS PROVIDED BY NETAPP "AS IS" AND WITHOUT ANY EXPRESS OR IMPLIED WARRANTIES, INCLUDING, BUT NOT LIMITED TO, THE IMPLIED WARRANTIES OF MERCHANTABILITY AND FITNESS FOR A PARTICULAR PURPOSE, WHICH ARE HEREBY DISCLAIMED. IN NO EVENT SHALL NETAPP BE LIABLE FOR ANY DIRECT, INDIRECT, INCIDENTAL, SPECIAL, EXEMPLARY, OR CONSEQUENTIAL DAMAGES (INCLUDING, BUT NOT LIMITED TO, PROCUREMENT OF SUBSTITUTE GOODS OR SERVICES; LOSS OF USE, DATA, OR PROFITS; OR BUSINESS INTERRUPTION) HOWEVER CAUSED AND ON ANY THEORY OF LIABILITY, WHETHER IN CONTRACT, STRICT LIABILITY, OR TORT (INCLUDING NEGLIGENCE OR OTHERWISE) ARISING IN ANY WAY OUT OF THE USE OF THIS SOFTWARE, EVEN IF ADVISED OF THE POSSIBILITY OF SUCH DAMAGE.

NetApp reserves the right to change any products described herein at any time, and without notice. NetApp assumes no responsibility or liability arising from the use of products described herein, except as expressly agreed to in writing by NetApp. The use or purchase of this product does not convey a license under any patent rights, trademark rights, or any other intellectual property rights of NetApp.

The product described in this manual may be protected by one or more U.S. patents, foreign patents, or pending applications.

RESTRICTED RIGHTS LEGEND: Use, duplication, or disclosure by the government is subject to restrictions as set forth in subparagraph (c)(1)(ii) of the Rights in Technical Data and Computer Software clause at DFARS 252.277-7103 (October 1988) and FAR 52-227-19 (June 1987).

Trademark Information

NETAPP, the NETAPP logo, and the marks listed at <http://www.netapp.com/TM> are trademarks of NetApp, Inc. Other company and product names may be trademarks of their respective owners.