



Data Management

NetApp Solutions

Dorian Henderson, Kevin Hoke
January 19, 2021

Table of Contents

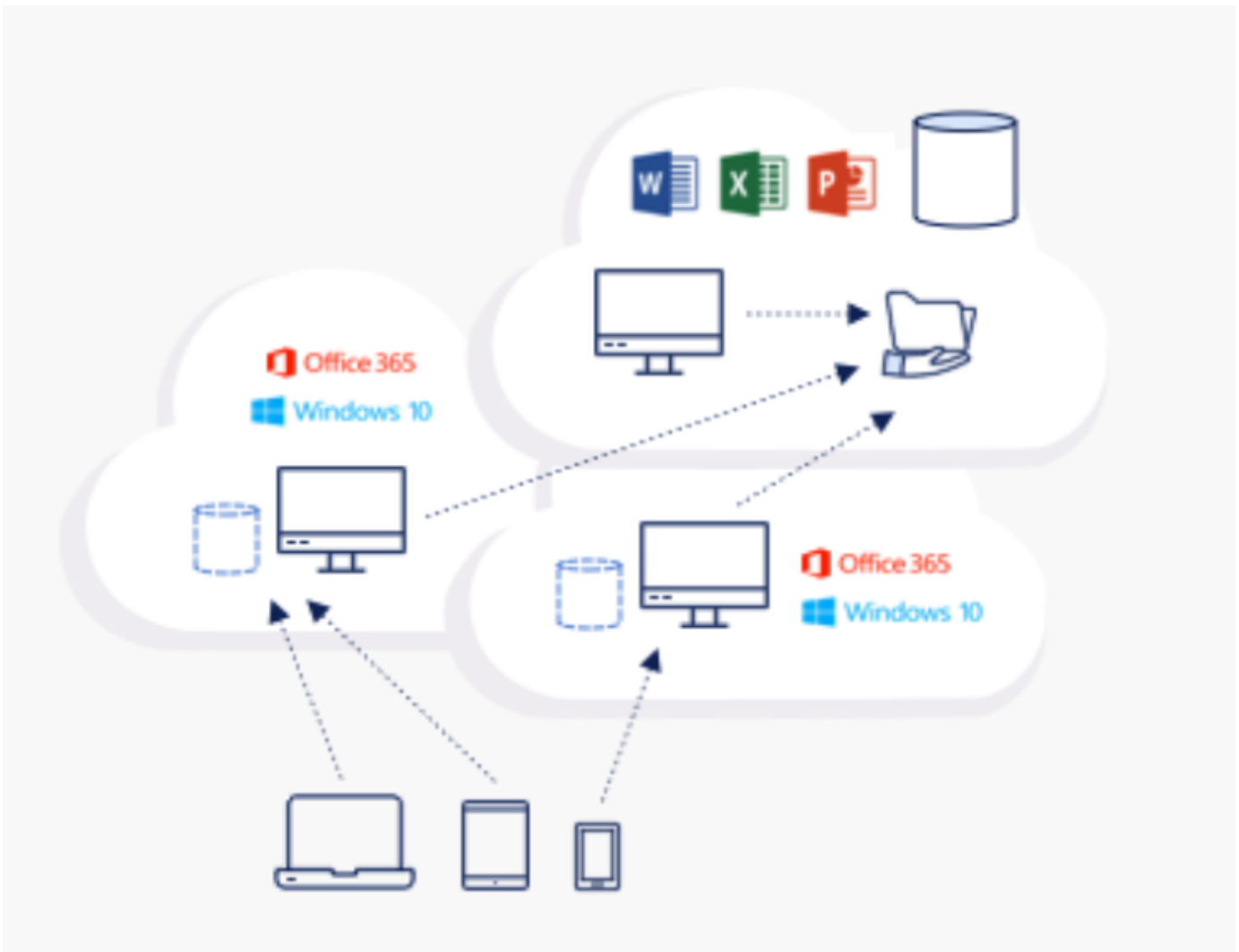
- Data Management 1
- Global File Cache..... 1
- SaaS Backup 6

Data Management

As a part of deployment, you can choose the file-services method to host the user profile, shared data, and the home drive folder. The available options are File Server, Azure Files, or Azure NetApp Files. However, after deployment, you can modify this choice with the TestvDC tool to point to any SMB share. There are various advantages to hosting with NetApp ONTAP. For more information, see the [NetApp Redirecting Storage Platform page](#).

Global File Cache

When users are spread across multiple sites within a global namespace, Global File Cache can help reduce latency for frequently accessed data. Global File Cache deployment can be automated using a provisioning collection and scripted events. Global File Cache handles the read and write caches locally and maintains file locks across locations. Global File Cache can work with any SMB file servers, including Azure NetApp Files.

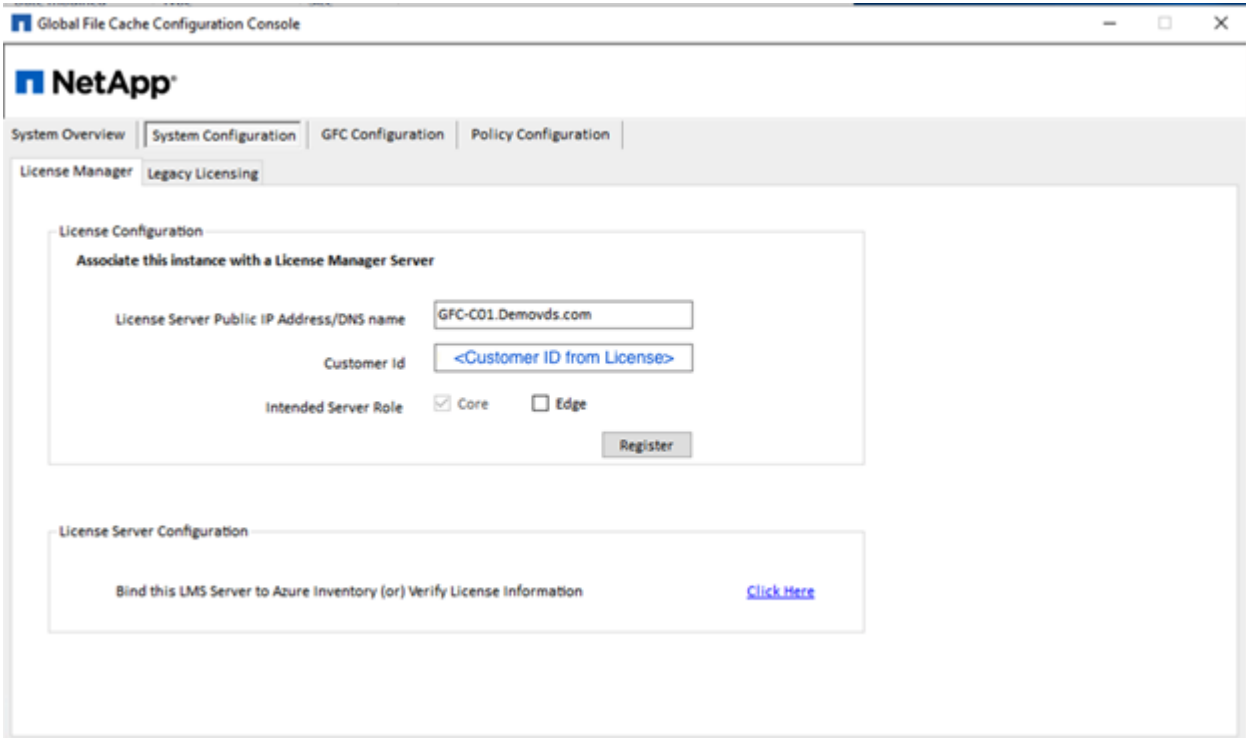


Global File Cache requires the following:

- Management server (License Management Server)
- Core
- Edge with enough disk capacity to cache the data

To download the software and to calculate the disk cache capacity for Edge, see the [GFC documentation](#).

For our validation, we deployed the core and management resources on the same VM at Azure and edge resources on NetApp HCI. Please note that the core is where high-volume data access is required and the edge is a subset of the core. After the software is installed, the license must be activated before use. Under License Configuration section, use the link [Click Here](#) to complete the license activation. Then, register the core.

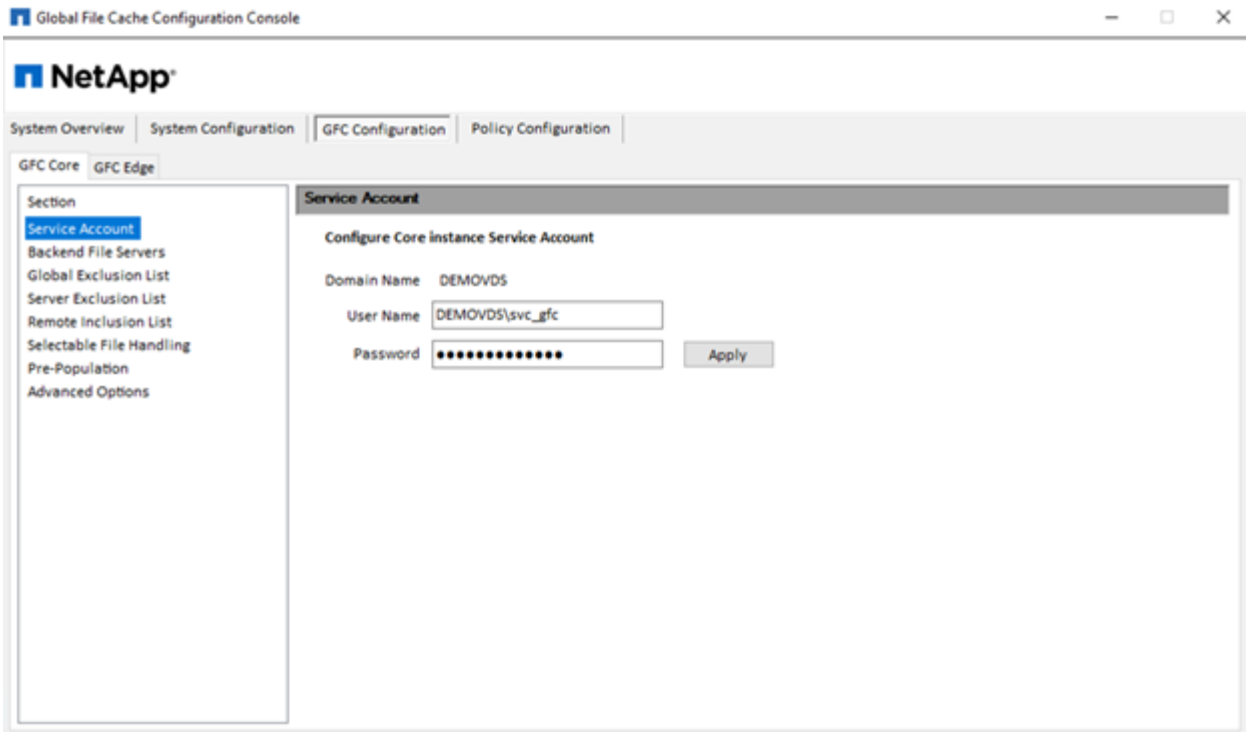


The screenshot displays the NetApp Global File Cache Configuration Console. The interface includes a navigation bar with tabs for System Overview, System Configuration, GFC Configuration, and Policy Configuration. The current view is under License Manager > Legacy Licensing. The main content area is titled "License Configuration" and contains the following fields and options:

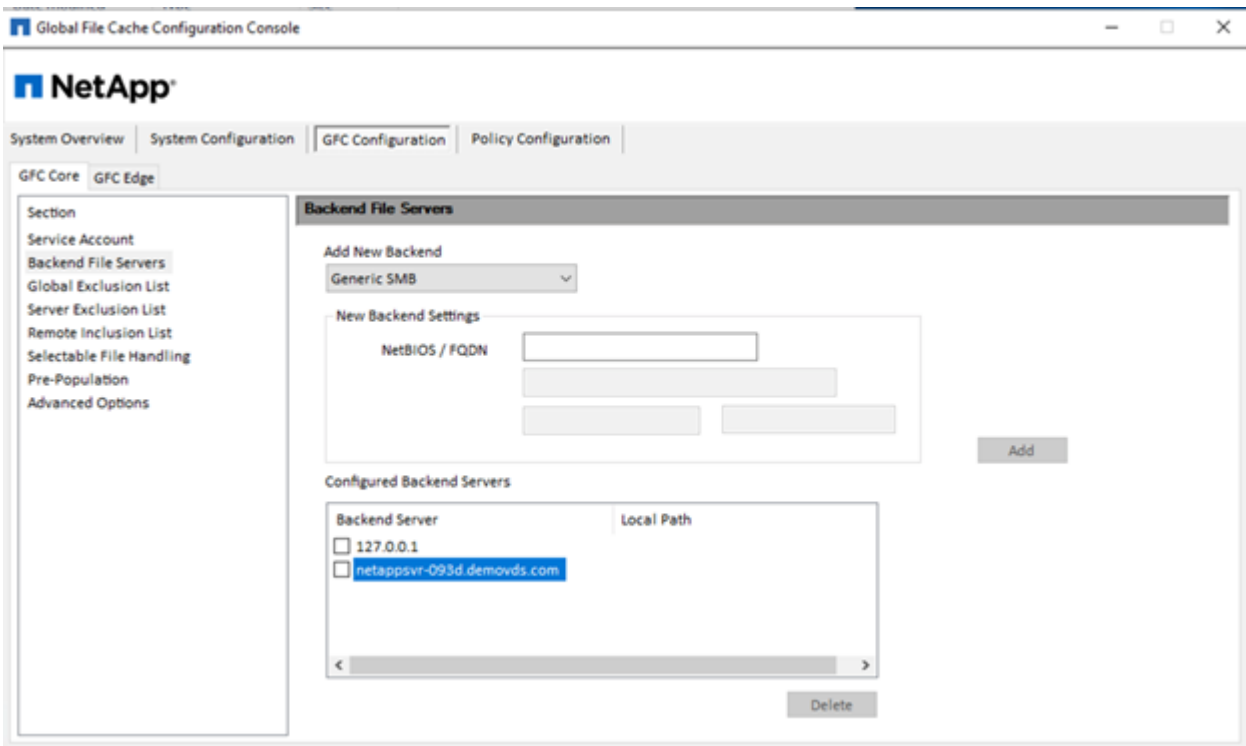
- Associate this instance with a License Manager Server**
- License Server Public IP Address/DNS name:
- Customer Id:
- Intended Server Role: Core Edge
-

Below this section is the "License Server Configuration" section, which includes the text "Bind this LMS Server to Azure Inventory (or) Verify License Information" and a [Click Here](#) link.

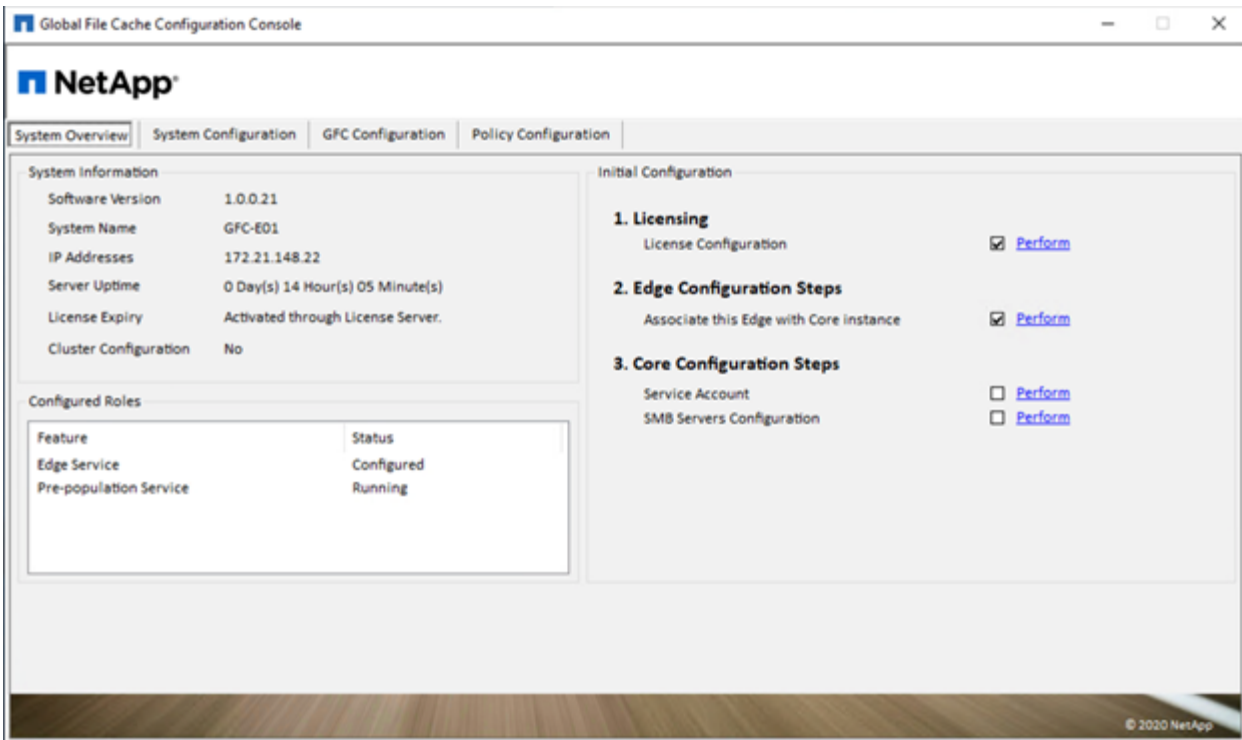
Provide the service account to be used for the Global File Cache. For the required permissions for this account, see the [GFC documentation](#).



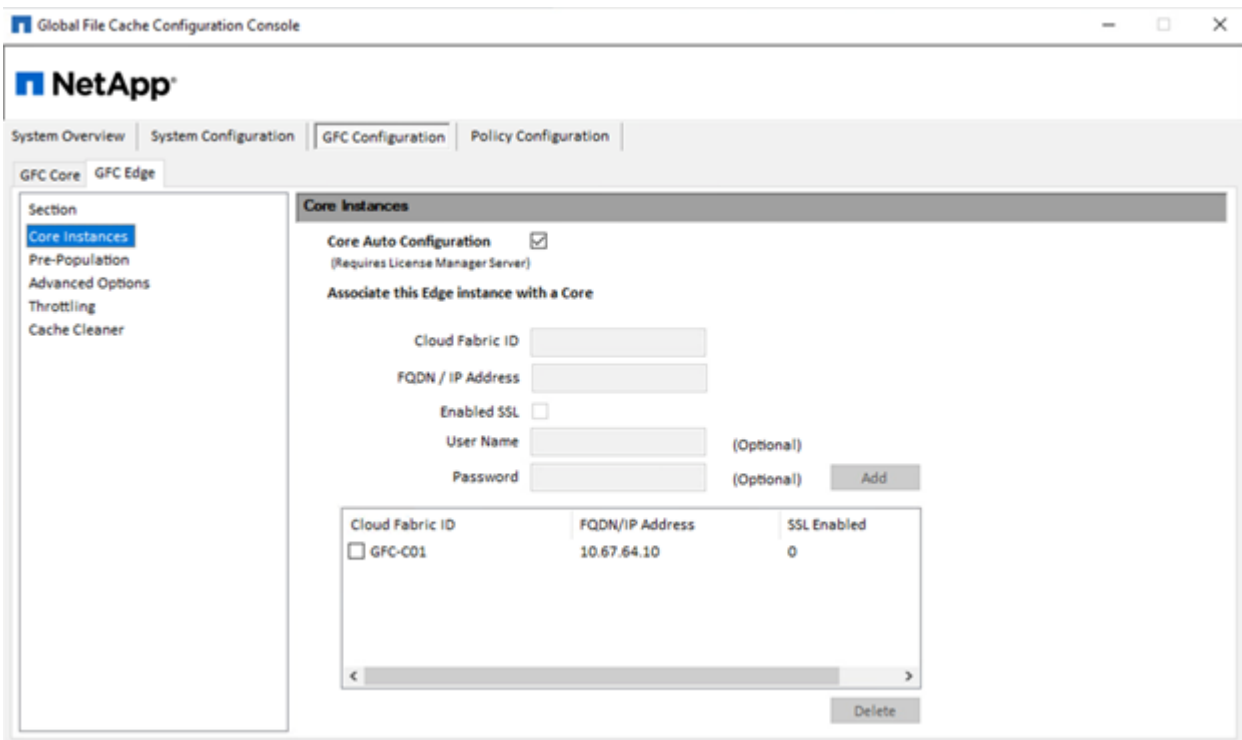
Add a new backend file server and provide the file server name or IP.



On the edge, the cache drive must have the drive letter D. If it does not, use diskpart.exe to select the volume and change drive letter. Register with the license server as edge.



If core auto-configuration is enabled, core information is retrieved from the license management server automatically.



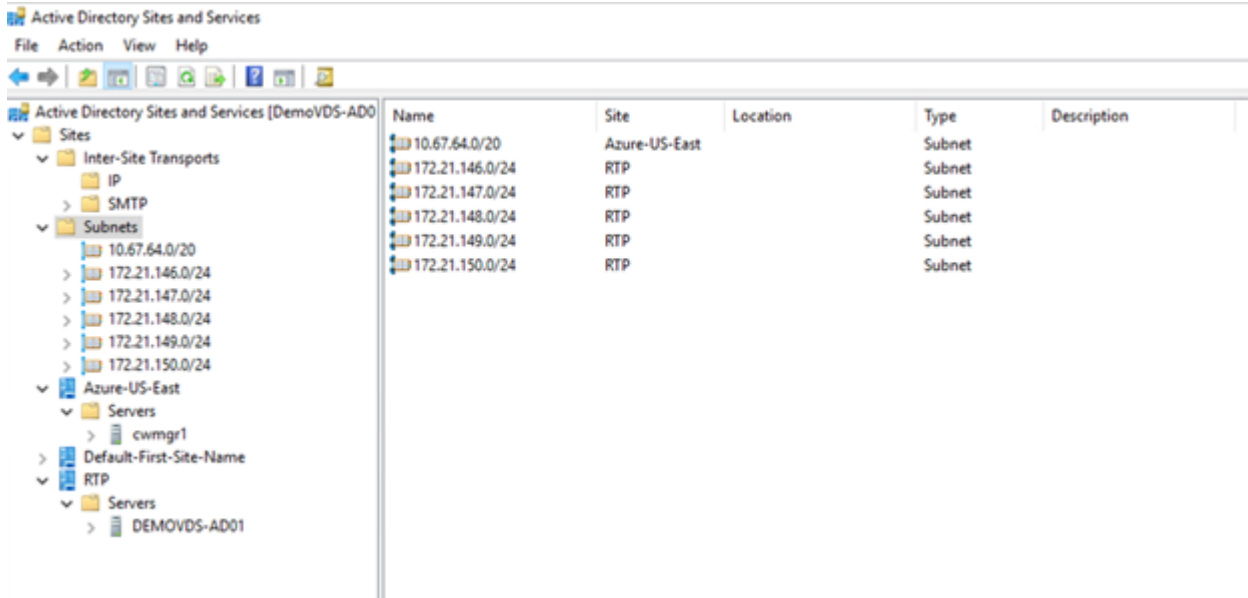
From any client machine, the administrators that use to access the share on file server, can access it via GFC edge using UNC Path `\\<edge server name>\FASTDATA\<core server name>\<backend file server name>\<share name>`. Administrators can include this path in user logonscript or GPO for users drive mapping at the edge location.

To provide transparent access for users across the globe, an administrator can setup the Microsoft Distributed

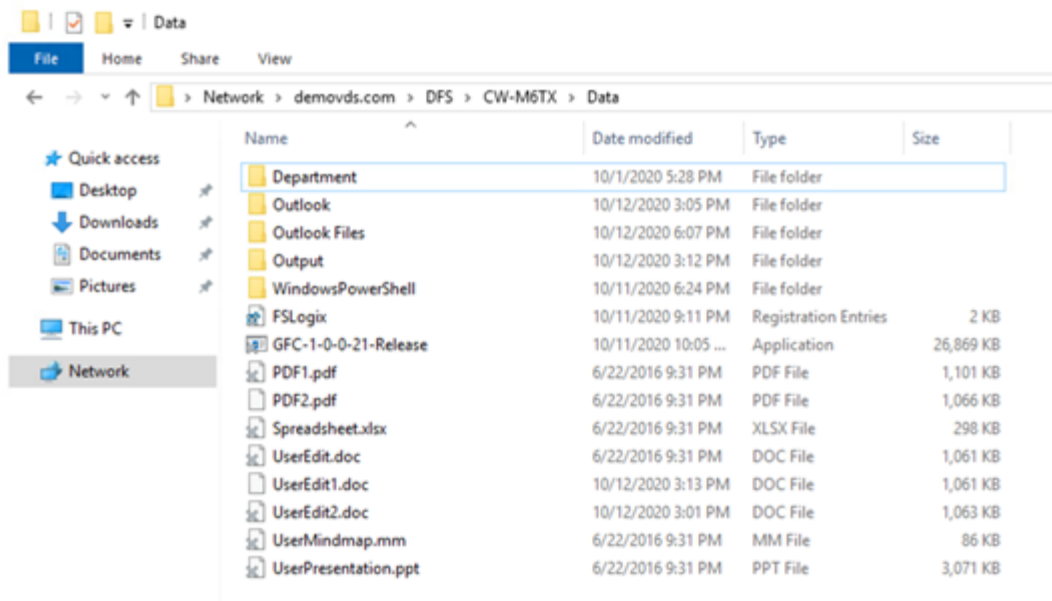
Filesystem (DFS) with links pointing to file server shares and to edge locations.



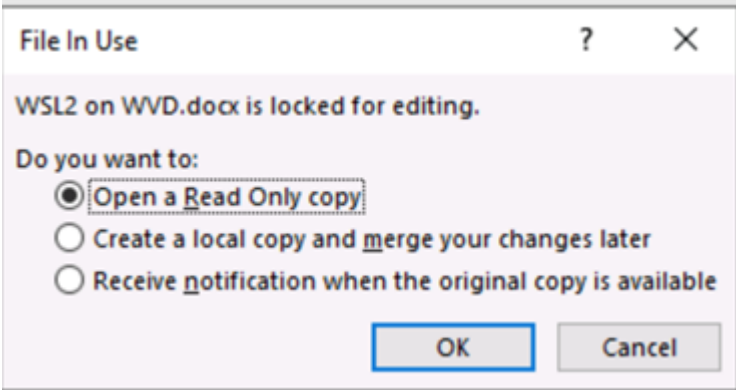
When users log in with Active Directory credentials based on the subnets associated with the site, the appropriate link is utilized by the DFS client to access the data.



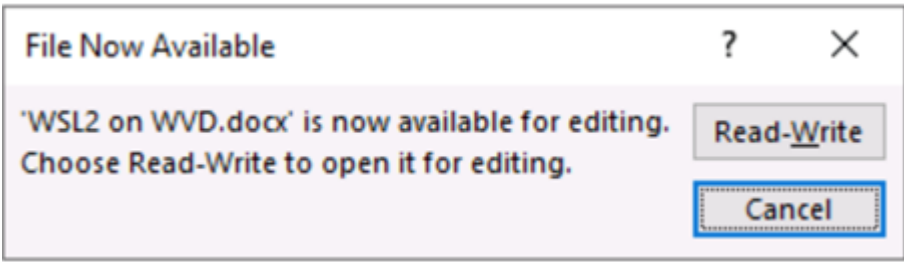
File icons change depending on whether a file is cached; files that are not cached have a grey X on the lower left corner of the icon. After a user in an edge location accesses a file, that file is cached, and the icon changes.



When a file is open and another user is trying to open the same file from an edge location, the user is prompted with the following selection:



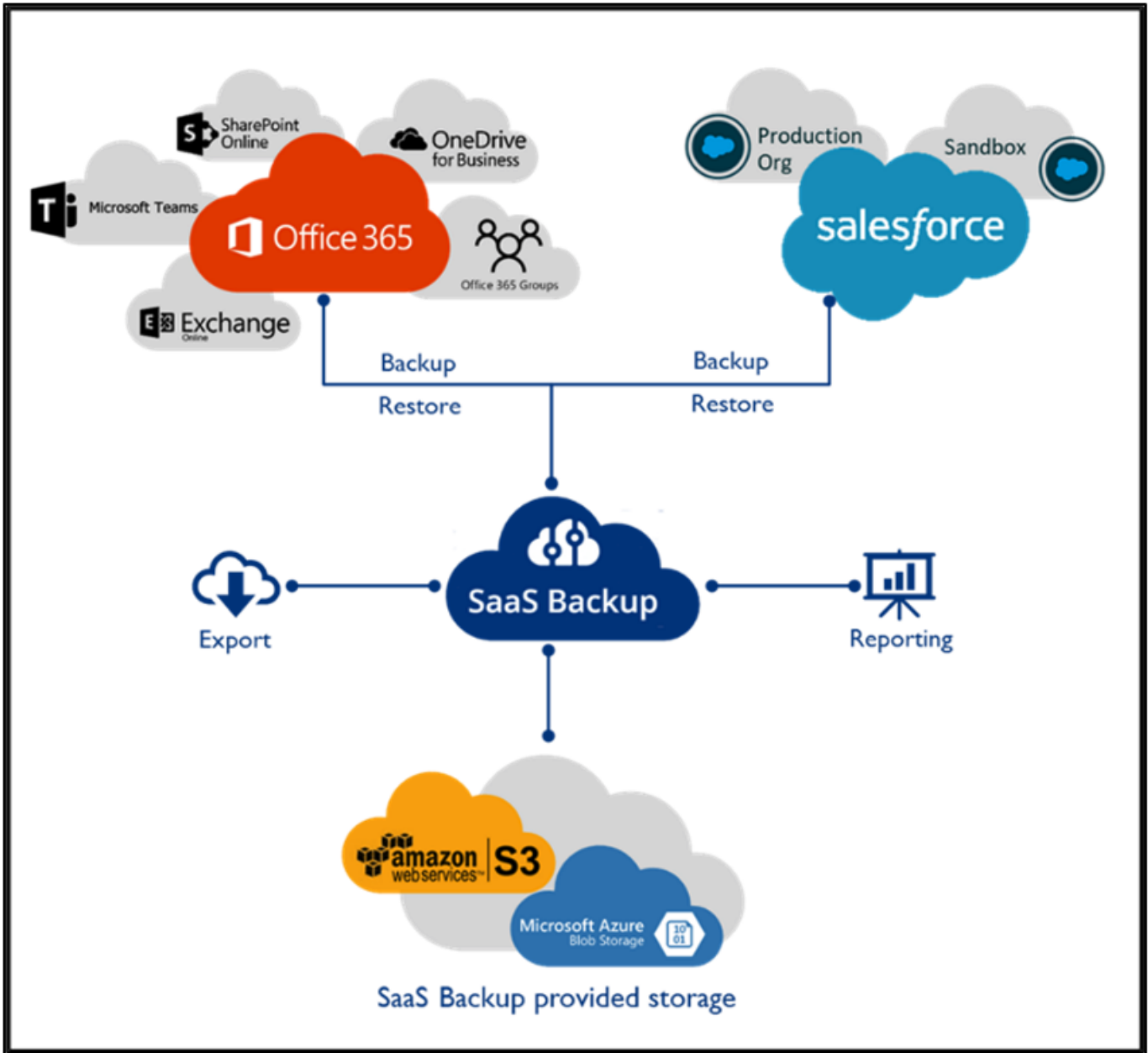
If the user selects the option to receive a notification when the original copy is available, the user is notified as follows:



For more information, see this [video on Talon and Azure NetApp Files Deployment](#).

SaaS Backup

NetApp VDS provides data protection for Salesforce and Microsoft Office 365, including Exchange, SharePoint, and Microsoft OneDrive. The following figure shows how NetApp VDS provides SaaS Backup for these data services.



For a demonstration of Microsoft Office 365 data protection, see [this video](#).

For demonstration of Salesforce data protection, see [this video](#).

Next: [Operation Management](#)

Copyright Information

Copyright © 2021 NetApp, Inc. All rights reserved. Printed in the U.S. No part of this document covered by copyright may be reproduced in any form or by any means-graphic, electronic, or mechanical, including photocopying, recording, taping, or storage in an electronic retrieval system-without prior written permission of the copyright owner.

Software derived from copyrighted NetApp material is subject to the following license and disclaimer:

THIS SOFTWARE IS PROVIDED BY NETAPP "AS IS" AND WITHOUT ANY EXPRESS OR IMPLIED WARRANTIES, INCLUDING, BUT NOT LIMITED TO, THE IMPLIED WARRANTIES OF MERCHANTABILITY AND FITNESS FOR A PARTICULAR PURPOSE, WHICH ARE HEREBY DISCLAIMED. IN NO EVENT SHALL NETAPP BE LIABLE FOR ANY DIRECT, INDIRECT, INCIDENTAL, SPECIAL, EXEMPLARY, OR CONSEQUENTIAL DAMAGES (INCLUDING, BUT NOT LIMITED TO, PROCUREMENT OF SUBSTITUTE GOODS OR SERVICES; LOSS OF USE, DATA, OR PROFITS; OR BUSINESS INTERRUPTION) HOWEVER CAUSED AND ON ANY THEORY OF LIABILITY, WHETHER IN CONTRACT, STRICT LIABILITY, OR TORT (INCLUDING NEGLIGENCE OR OTHERWISE) ARISING IN ANY WAY OUT OF THE USE OF THIS SOFTWARE, EVEN IF ADVISED OF THE POSSIBILITY OF SUCH DAMAGE.

NetApp reserves the right to change any products described herein at any time, and without notice. NetApp assumes no responsibility or liability arising from the use of products described herein, except as expressly agreed to in writing by NetApp. The use or purchase of this product does not convey a license under any patent rights, trademark rights, or any other intellectual property rights of NetApp.

The product described in this manual may be protected by one or more U.S. patents, foreign patents, or pending applications.

RESTRICTED RIGHTS LEGEND: Use, duplication, or disclosure by the government is subject to restrictions as set forth in subparagraph (c)(1)(ii) of the Rights in Technical Data and Computer Software clause at DFARS 252.277-7103 (October 1988) and FAR 52-227-19 (June 1987).

Trademark Information

NETAPP, the NETAPP logo, and the marks listed at <http://www.netapp.com/TM> are trademarks of NetApp, Inc. Other company and product names may be trademarks of their respective owners.