



# **NVIDIA AI Enterprise with NetApp and VMware**

## **NetApp Solutions**

NetApp  
November 15, 2022

# Table of Contents

- NVIDIA AI Enterprise with NetApp and VMware ..... 1
- NVIDIA AI Enterprise with NetApp and VMware ..... 1
- Technology Overview ..... 1
- Architecture ..... 3
- Initial Setup ..... 5
- Utilize NVIDIA NGC Software ..... 5
- Where to Find Additional Information ..... 11

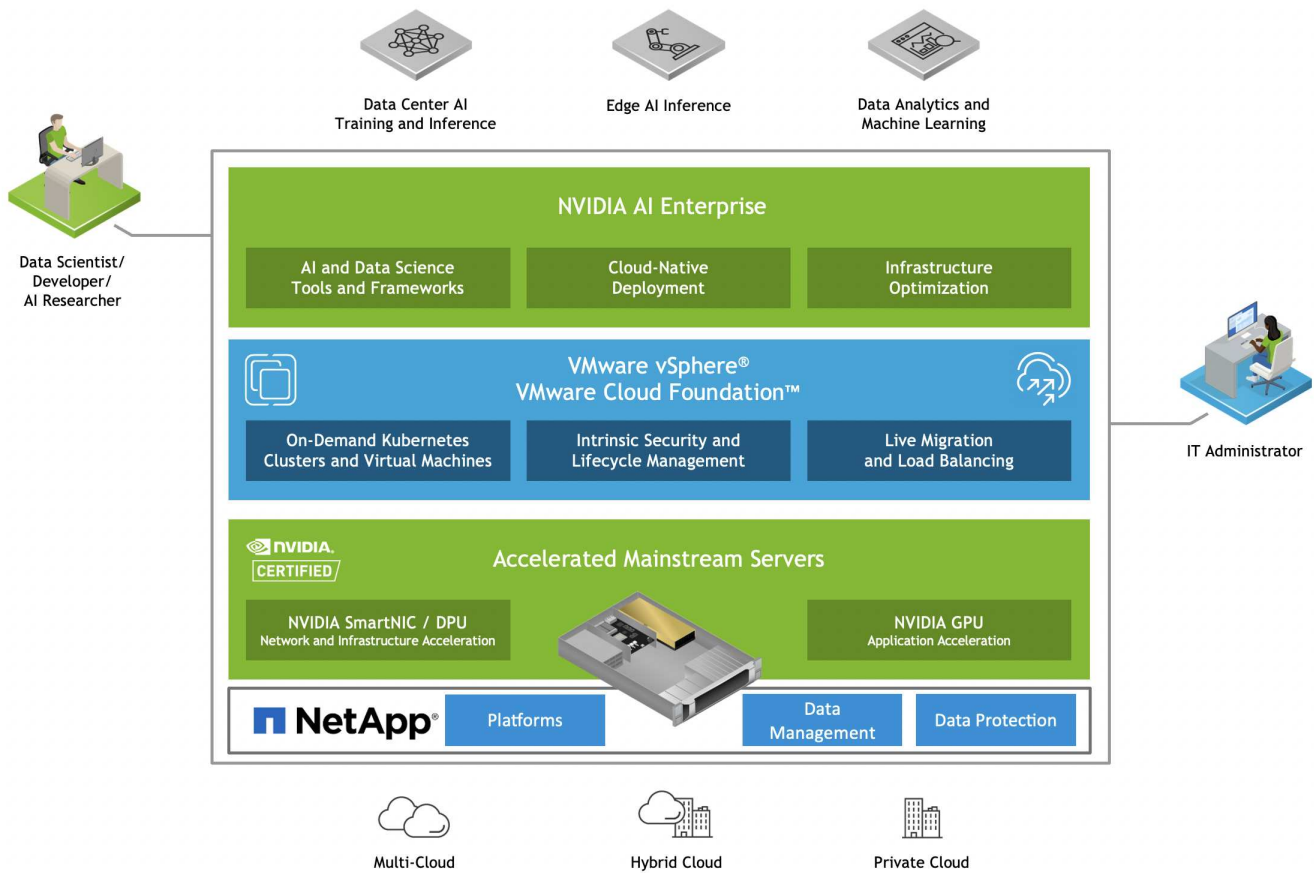
# NVIDIA AI Enterprise with NetApp and VMware

## NVIDIA AI Enterprise with NetApp and VMware

Mike Oglesby, NetApp

For IT architects and admins, AI tooling can be complicated and unfamiliar. Additionally, many AI platforms are not enterprise-ready. NVIDIA AI Enterprise, powered by NetApp and VMware, was created to deliver a streamlined, enterprise-class AI architecture.

NVIDIA AI Enterprise is an end-to-end, cloud-native suite of AI and data analytics software that is optimized, certified, and supported by NVIDIA to run on VMware vSphere with NVIDIA-Certified Systems. This software facilitates the simple and rapid deployment, management, and scaling of AI workloads in the modern hybrid cloud environment. NVIDIA AI Enterprise, powered by NetApp and VMware, delivers enterprise-class AI workload and data management in a simplified, familiar package.



[Next: Technology Overview.](#)

## Technology Overview

[Previous: Introduction.](#)

## **NVIDIA AI Enterprise**

NVIDIA AI Enterprise is an end-to-end, cloud-native suite of AI and data analytics software that is optimized, certified, and supported by NVIDIA to run on VMware vSphere with NVIDIA-Certified Systems. This software facilitates the simple and rapid deployment, management, and scaling of AI workloads in the modern hybrid cloud environment.

## **NVIDIA GPU Cloud (NGC)**

NVIDIA NGC hosts a catalog of GPU-optimized software for AI practitioners to develop their AI solutions. It also provides access to various AI services including NVIDIA Base Command for model training, NVIDIA Fleet Command to deploy and monitor models, and the NGC Private Registry for securely accessing and managing proprietary AI software. Also, NVIDIA AI Enterprise customers can request support through the NGC portal.

## **VMware vSphere**

VMware vSphere is VMware's virtualization platform, which transforms data centers into aggregated computing infrastructures that include CPU, storage, and networking resources. vSphere manages these infrastructures as a unified operating environment, and provides administrators with the tools to manage the data centers that participate in that environment.

The two core components of vSphere are ESXi and vCenter Server. ESXi is the virtualization platform where administrators create and run virtual machines and virtual appliances. vCenter Server is the service through which administrators manage multiple hosts connected in a network and pool host resources.

## **NetApp ONTAP**

ONTAP 9, the latest generation of storage management software from NetApp, enables businesses to modernize infrastructure and transition to a cloud-ready data center. Leveraging industry-leading data management capabilities, ONTAP enables the management and protection of data with a single set of tools, regardless of where that data resides. You can also move data freely to wherever it is needed: the edge, the core, or the cloud. ONTAP 9 includes numerous features that simplify data management, accelerate, and protect critical data, and enable next generation infrastructure capabilities across hybrid cloud architectures.

### **Simplify data management**

Data management is crucial to enterprise IT operations and data scientists so that appropriate resources are used for AI applications and training AI/ML datasets. The following additional information about NetApp technologies is out of scope for this validation but might be relevant depending on your deployment.

ONTAP data management software includes the following features to streamline and simplify operations and reduce your total cost of operation:

- Inline data compaction and expanded deduplication. Data compaction reduces wasted space inside storage blocks, and deduplication significantly increases effective capacity. This applies to data stored locally and data tiered to the cloud.
- Minimum, maximum, and adaptive quality of service (AQoS). Granular quality of service (QoS) controls help maintain performance levels for critical applications in highly shared environments.
- NetApp FabricPool. Provides automatic tiering of cold data to public and private cloud storage options, including Amazon Web Services (AWS), Azure, and NetApp StorageGRID storage solution. For more information about FabricPool, see [TR-4598: FabricPool best practices](#).

## Accelerate and protect data

ONTAP delivers superior levels of performance and data protection and extends these capabilities in the following ways:

- Performance and lower latency. ONTAP offers the highest possible throughput at the lowest possible latency.
- Data protection. ONTAP provides built-in data protection capabilities with common management across all platforms.
- NetApp Volume Encryption (NVE). ONTAP offers native volume-level encryption with both onboard and External Key Management support.
- Multitenancy and multifactor authentication. ONTAP enables sharing of infrastructure resources with the highest levels of security.

## Future-proof infrastructure

ONTAP helps meet demanding and constantly changing business needs with the following features:

- Seamless scaling and nondisruptive operations. ONTAP supports the nondisruptive addition of capacity to existing controllers and to scale-out clusters. Customers can upgrade to the latest technologies, such as NVMe and 32Gb FC, without costly data migrations or outages.
- Cloud connection. ONTAP is the most cloud-connected storage management software, with options for software-defined storage (ONTAP Select) and cloud-native instances (NetApp Cloud Volumes Service) in all public clouds.
- Integration with emerging applications. ONTAP offers enterprise-grade data services for next generation platforms and applications, such as autonomous vehicles, smart cities, and Industry 4.0, by using the same infrastructure that supports existing enterprise apps.

## NetApp DataOps Toolkit

The NetApp DataOps Toolkit is a Python-based tool that simplifies the management of development/training workspaces and inference servers that are backed by high-performance, scale-out NetApp storage. Key capabilities include:

- Rapidly provision new high-capacity JupyterLab workspaces that are backed by high-performance, scale-out NetApp storage.
- Rapidly provision new NVIDIA Triton Inference Server instances that are backed by enterprise-class NetApp storage.
- Near-instantaneously clone high-capacity JupyterLab workspaces in order to enable experimentation or rapid iteration.
- Near-instantaneously save snapshots of high-capacity JupyterLab workspaces for backup and/or traceability/baselining.
- Near-instantaneously provision, clone, and snapshot high-capacity, high-performance data volumes.

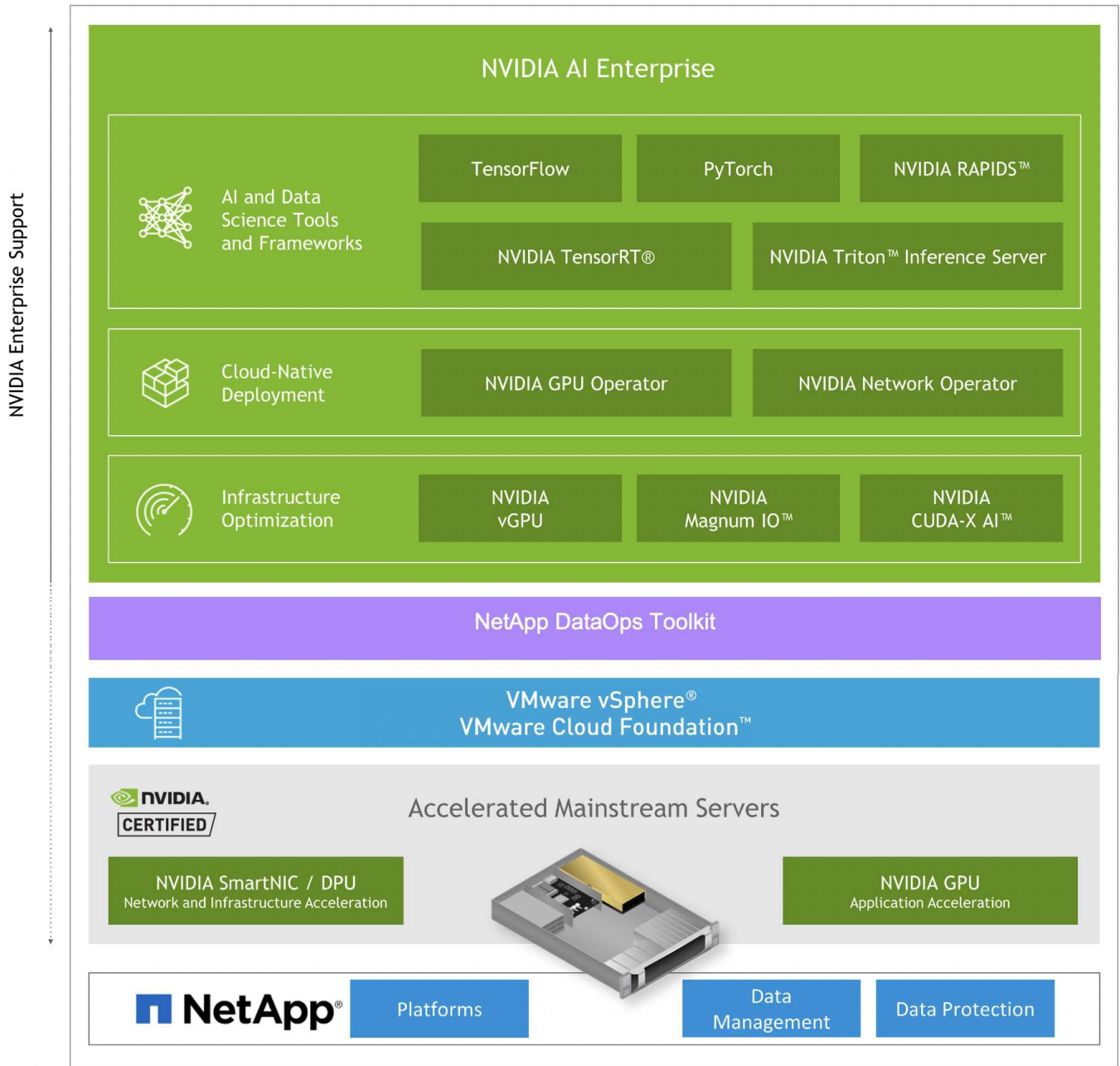
[Next: Architecture.](#)

# Architecture

[Previous: Technology Overview.](#)

This solution builds upon a proven and familiar architecture featuring NetApp, VMware, and NVIDIA-Certified Systems. See the following table for details.

Component	Details
AI and Data Analytics Software	<a href="#">NVIDIA AI Enterprise for VMware</a>
Virtualization Platform	<a href="#">VMware vSphere</a>
Compute Platform	<a href="#">NVIDIA-Certified Systems</a>
Data Management Platform	<a href="#">NetApp ONTAP</a>



Next: Initial Setup.

# Initial Setup

[Previous: Architecture.](#)

This section describes the initial setup tasks that need to be performed in order to utilize NVIDIA AI Enterprise with NetApp and VMware.

## Prerequisites

Before you perform the steps that are outlined in this section, we assume that you have already deployed VMware vSphere and NetApp ONTAP. Refer to the [NVIDIA AI Enterprise Product Support Matrix](#) for details on supported vSphere versions. Refer to the [NetApp and VMware solution documentation](#) for details on deploying VMware vSphere with NetApp ONTAP.

## Install NVIDIA AI Enterprise Host Software

To install the NVIDIA AI Enterprise host software, follow the instructions outlined in sections 1-4 in the [NVIDIA AI Enterprise Quick Start Guide](#).

[Next: Utilize NVIDIA NGC Software.](#)

# Utilize NVIDIA NGC Software

[Previous: Initial Setup.](#)

This section describes the tasks that need to be performed in order to utilize NVIDIA NGC enterprise software within an NVIDIA AI Enterprise environment.

[Next: Setup.](#)

## Setup

[Previous: Utilize NVIDIA NGC Software.](#)

This section describes the initial setup tasks that need to be performed in order to utilize NVIDIA NGC enterprise software within an NVIDIA AI Enterprise environment.

### Prerequisites

Before you perform the steps that are outlined in this section, we assume that you have already deployed the NVIDIA AI Enterprise host software by following the instructions outlined on the [Initial Setup](#) page.

### Create an Ubuntu Guest VM with vGPU

First, you must create an Ubuntu 20.04 guest VM with vGPU. To create an Ubuntu 20.04 guest VM with vGPU, follow the instructions outline in the [NVIDIA AI Enterprise Deployment Guide](#).

### Download and Install NVIDIA Guest Software

Next, you must install the required NVIDIA guest software within the guest VM that you created in the previous step. To download and install the required NVIDIA guest software within the guest VM, follow the instructions outlined in sections 5.1-5.4 in the [NVIDIA AI Enterprise Quick Start Guide](#).



When performing the verification tasks outlined in section 5.4, you may need to use a different CUDA container image version tag as the CUDA container image has been updated since the writing of the guide. In our validation, we used 'nvidia/cuda:11.0.3-base-ubuntu20.04'.

## Download AI/Analytics Framework Container(s)

Next, you must download needed AI or analytics framework container images from NVIDIA NGC so that they will be available within your guest VM. To download framework containers within the guest VM, follow the instructions outlined in the [NVIDIA AI Enterprise Deployment Guide](#).

## Install and Configure the NetApp DataOps Toolkit

Next, you must install the NetApp DataOps Toolkit for Traditional Environments within the guest VM. The NetApp DataOps Toolkit can be used to manage scale-out data volumes on your ONTAP system directly from the terminal within the guest VM. To install the NetApp DataOps Toolkit within the guest VM, perform the following tasks.

1. Install pip.

```
$ sudo apt update
$ sudo apt install python3-pip
$ python3 -m pip install netapp-dataops-traditional
```

2. Log out of the guest VM terminal and then log back in.
3. Configure the NetApp DataOps Toolkit. In order to complete this step, you will need API access details for your ONTAP system. You may need to obtain these from your storage admin.



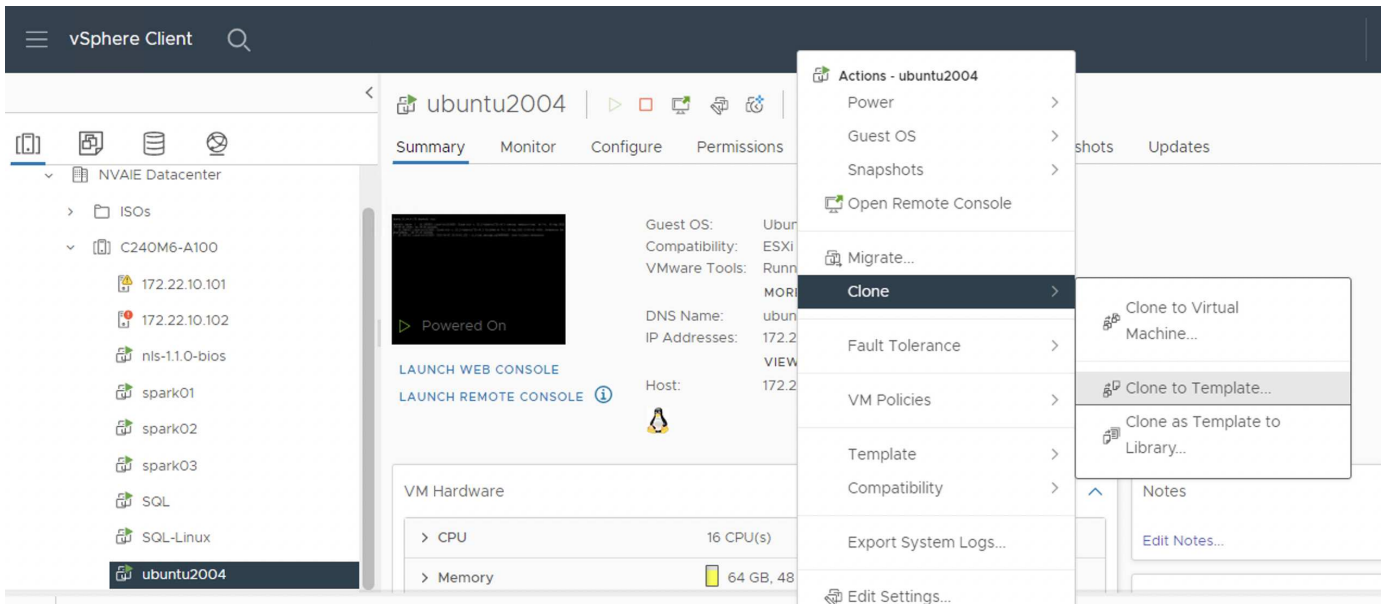
```
$ netapp_dataops_cli.py config

Enter ONTAP management LIF hostname or IP address (Recommendation: Use
SVM management interface): 172.22.10.10
Enter SVM (Storage VM) name: NVAIE-client
Enter SVM NFS data LIF hostname or IP address: 172.22.13.151
Enter default volume type to use when creating new volumes
(flexgroup/flexvol) [flexgroup]:
Enter export policy to use by default when creating new volumes
[default]:
Enter snapshot policy to use by default when creating new volumes
[none]:
Enter unix filesystem user id (uid) to apply by default when creating
new volumes (ex. '0' for root user) [0]:
Enter unix filesystem group id (gid) to apply by default when creating
new volumes (ex. '0' for root group) [0]:
Enter unix filesystem permissions to apply by default when creating new
volumes (ex. '0777' for full read/write permissions for all users and
groups) [0777]:
Enter aggregate to use by default when creating new FlexVol volumes:
aff_a400_01_NVME_SSD_1
Enter ONTAP API username (Recommendation: Use SVM account): admin
Enter ONTAP API password (Recommendation: Use SVM account):
Verify SSL certificate when calling ONTAP API (true/false): false
Do you intend to use this toolkit to trigger Cloud Sync operations?
(yes/no): no
Do you intend to use this toolkit to push/pull from S3? (yes/no): no
Created config file: '/home/user/.netapp_dataops/config.json'.
```

## Create a Guest VM template

Lastly, you must create a VM template based on your guest VM. You will be able to use this template to quickly create guest VMs for utilizing NVIDIA NGC software.

To create a VM template based on your guest VM, log into VMware vSphere, right-click on the guest VM name, choose 'Clone', choose 'Clone to Template...', and then follow the wizard.



Next: [Example Use Case - TensorFlow Training Job](#).

## Example Use Case - TensorFlow Training Job

Previous: [Setup](#).

This section describes the tasks that need to be performed in order to execute a TensorFlow training job within an NVIDIA AI Enterprise environment.

### Prerequisites

Before you perform the steps that are outlined in this section, we assume that you have already created a guest VM template by following the instructions outlined on the [Setup](#) page.

### Create Guest VM from Template

First, you must create a new guest VM from the template that you created in the previous section. To create a new guest VM from your template, log into VMware vSphere, right-click on the template name, choose 'New VM from This Template...', and then follow the wizard.



vgpu-client-ubun



172.22.10.100

NVAIE Datacenter

Discovered virtual machine

vCLS

nls-1.1.0-bios

spark01

spark02

spark03

SQL

SQL-Linux

ubuntu2004

**vgpu-client-ubuntu2**

Summary

Monitor

Co

Guest OS:

Compatibility

VMware Tool

- Actions - vgpu-client-ubuntu2004
- New VM from This Template...**
- Convert to Virtual Machine...
- Clone to Template...
- Clone to Library...
- Move to folder...
- Rename...
- Edit Notes...
- Tags & Custom Attributes
- Add Permission...
- Alarms
- Remove from Inventory
- Delete from Disk
- vSAN



Recent Tasks

Alarms

Task Name



Target

Delete virtual machine



Clone virtual machine



All



More Tasks

## Create and Mount Data Volume

Next, you must create a new data volume on which to store your training dataset. You can quickly create a new data volume using the NetApp DataOps Toolkit. The example command that follows shows the creation of a volume named 'imagenet' with a capacity of 2 TB.

```
$ netapp_dataops_cli.py create vol -n imagenet -s 2TB
```

Before you can populate your data volume with data, you must mount it within the guest VM. You can quickly mount a data volume using the NetApp DataOps Toolkit. The example command that follows shows the mounting of the volume that was created in the previous step.

```
$ sudo -E netapp_dataops_cli.py mount vol -n imagenet -m ~/imagenet
```

## Populate Data Volume

After the new volume has been provisioned and mounted, the training dataset can be retrieved from the source location and placed on the new volume. This typically will involve pulling the data from an S3 or Hadoop data lake and sometimes will involve help from a data engineer.

## Execute TensorFlow Training Job

Now, you are ready to execute your TensorFlow training job. To execute your TensorFlow training job, perform the following tasks.

1. Pull the NVIDIA NGC enterprise TensorFlow container image.

```
$ sudo docker pull nvcr.io/nvaie/tensorflow-2-1:22.05-tf1-nvaie-2.1-py3
```

2. Launch an instance of the NVIDIA NGC enterprise TensorFlow container. Use the '-v' option to attach your data volume to the container.

```
$ sudo docker run --gpus all -v ~/imagenet:/imagenet -it --rm  
nvcr.io/nvaie/tensorflow-2-1:22.05-tf1-nvaie-2.1-py3
```

3. Execute your TensorFlow training program within the container. The example command that follows shows the execution of an example ResNet-50 training program that is included in the container image.

```
$ python ./nvidia-examples/cnn/resnet.py --layers 50 -b 64 -i 200 -u  
batch --precision fp16 --data_dir /imagenet/data
```

[Next: Where to Find Additional Information.](#)

# Where to Find Additional Information

[Previous: Example Use Case - TensorFlow Training Job.](#)

To learn more about the information described in this document, refer to the following documents and/or websites:

- NetApp ONTAP data management software — ONTAP information library

<http://mysupport.netapp.com/documentation/productlibrary/index.html?productID=62286>

- NetApp DataOps Toolkit

<https://github.com/NetApp/netapp-dataops-toolkit>

- NVIDIA AI Enterprise with VMware

<https://www.nvidia.com/en-us/data-center/products/ai-enterprise/vmware/>]

## Acknowledgments

- Bobby Oommen, Sr. Manager, NetApp
- Ramesh Isaac, Systems Administrator, NetApp
- Roney Daniel, Technical Marketing Engineer, NetApp

## Copyright information

Copyright © 2022 NetApp, Inc. All Rights Reserved. Printed in the U.S. No part of this document covered by copyright may be reproduced in any form or by any means—graphic, electronic, or mechanical, including photocopying, recording, taping, or storage in an electronic retrieval system—without prior written permission of the copyright owner.

Software derived from copyrighted NetApp material is subject to the following license and disclaimer:

THIS SOFTWARE IS PROVIDED BY NETAPP "AS IS" AND WITHOUT ANY EXPRESS OR IMPLIED WARRANTIES, INCLUDING, BUT NOT LIMITED TO, THE IMPLIED WARRANTIES OF MERCHANTABILITY AND FITNESS FOR A PARTICULAR PURPOSE, WHICH ARE HEREBY DISCLAIMED. IN NO EVENT SHALL NETAPP BE LIABLE FOR ANY DIRECT, INDIRECT, INCIDENTAL, SPECIAL, EXEMPLARY, OR CONSEQUENTIAL DAMAGES (INCLUDING, BUT NOT LIMITED TO, PROCUREMENT OF SUBSTITUTE GOODS OR SERVICES; LOSS OF USE, DATA, OR PROFITS; OR BUSINESS INTERRUPTION) HOWEVER CAUSED AND ON ANY THEORY OF LIABILITY, WHETHER IN CONTRACT, STRICT LIABILITY, OR TORT (INCLUDING NEGLIGENCE OR OTHERWISE) ARISING IN ANY WAY OUT OF THE USE OF THIS SOFTWARE, EVEN IF ADVISED OF THE POSSIBILITY OF SUCH DAMAGE.

NetApp reserves the right to change any products described herein at any time, and without notice. NetApp assumes no responsibility or liability arising from the use of products described herein, except as expressly agreed to in writing by NetApp. The use or purchase of this product does not convey a license under any patent rights, trademark rights, or any other intellectual property rights of NetApp.

The product described in this manual may be protected by one or more U.S. patents, foreign patents, or pending applications.

LIMITED RIGHTS LEGEND: Use, duplication, or disclosure by the government is subject to restrictions as set forth in subparagraph (b)(3) of the Rights in Technical Data -Noncommercial Items at DFARS 252.227-7013 (FEB 2014) and FAR 52.227-19 (DEC 2007).

Data contained herein pertains to a commercial product and/or commercial service (as defined in FAR 2.101) and is proprietary to NetApp, Inc. All NetApp technical data and computer software provided under this Agreement is commercial in nature and developed solely at private expense. The U.S. Government has a non-exclusive, non-transferrable, nonsublicensable, worldwide, limited irrevocable license to use the Data only in connection with and in support of the U.S. Government contract under which the Data was delivered. Except as provided herein, the Data may not be used, disclosed, reproduced, modified, performed, or displayed without the prior written approval of NetApp, Inc. United States Government license rights for the Department of Defense are limited to those rights identified in DFARS clause 252.227-7015(b) (FEB 2014).

## Trademark information

NETAPP, the NETAPP logo, and the marks listed at <http://www.netapp.com/TM> are trademarks of NetApp, Inc. Other company and product names may be trademarks of their respective owners.