



NetApp Storage Systems Overview

NetApp Solutions

NetApp
September 20, 2024

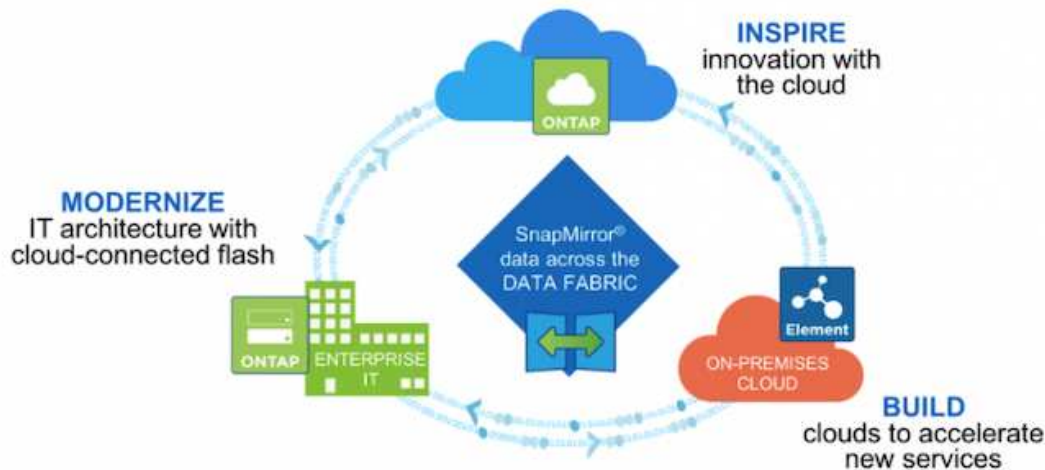
Table of Contents

NetApp storage systems overview 1
 NetApp ONTAP 1

NetApp storage systems overview

NetApp has several storage platforms that are qualified with Astra Trident and Astra Control to provision, protect and manage data for containerized applications and thus help in defining and maximizing DevOps throughput.

NetApp has several storage platforms that are qualified with Astra Trident and Astra Control to provision, protect, and manage data for containerized applications.



- AFF and FAS systems run NetApp ONTAP and provide storage for both file-based (NFS) and block-based (iSCSI) use cases.
- Cloud Volumes ONTAP and ONTAP Select provide the same benefits in the cloud and virtual space respectively.
- NetApp Cloud Volumes Service (AWS/GCP) and Azure NetApp Files provide file-based storage in the cloud.



Each storage system in the NetApp portfolio can ease both data management and movement between on-premises sites and the cloud so that your data is where your applications are.

The following pages have additional information about the NetApp storage systems validated in the DevOps with NetApp solution:

- [NetApp ONTAP](#)

NetApp ONTAP

NetApp ONTAP is a powerful storage-software tool with capabilities such as an intuitive GUI, REST APIs with automation integration, AI-informed predictive analytics and corrective action, non-disruptive hardware upgrades, and cross-storage import.

NetApp ONTAP is a powerful storage-software tool with capabilities such as an intuitive GUI, REST APIs with automation integration, AI-informed predictive analytics and corrective action, non-disruptive hardware upgrades, and cross-storage import.

For more information about the NetApp ONTAP storage system, visit the [NetApp ONTAP website](#).

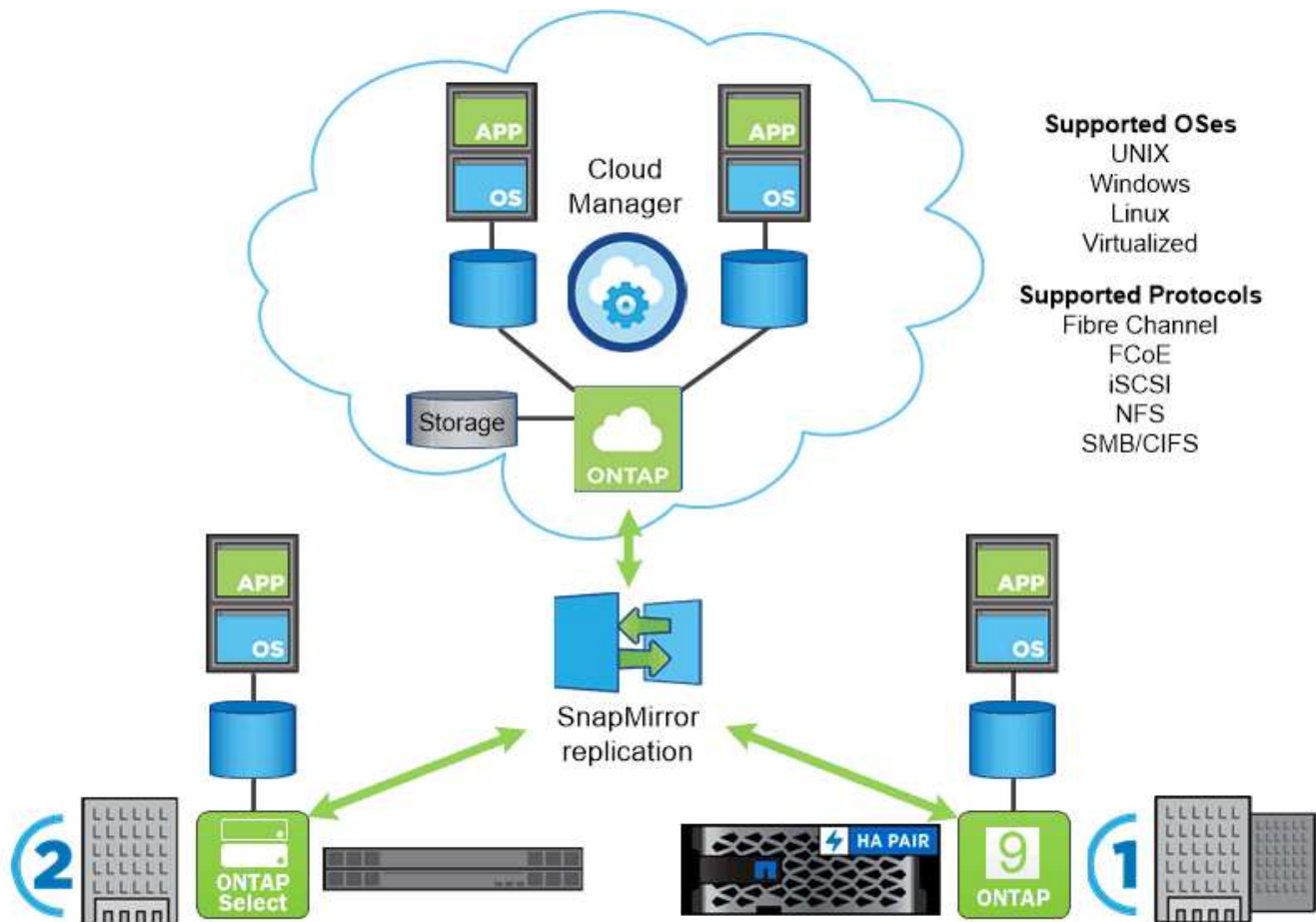
ONTAP provides the following features:

- A unified storage system with simultaneous data access and management of NFS, CIFS, iSCSI, FC, FCoE, and FC-NVMe protocols.
- Different deployment models include on-premises on all-flash, hybrid, and all-HDD hardware configurations; VM-based storage platforms on a supported hypervisor such as ONTAP Select; and in the cloud as Cloud Volumes ONTAP.
- Increased data storage efficiency on ONTAP systems with support for automatic data tiering, inline data compression, deduplication, and compaction.
- Workload-based, QoS-controlled storage.
- Seamless integration with a public cloud for tiering and protecting data. ONTAP also provides robust data protection capabilities that sets it apart in any environment:
 - **NetApp Snapshot copies.** A fast, point-in-time backup of data using a minimal amount of disk space with no additional performance overhead.
 - **NetApp SnapMirror.** Mirrors the Snapshot copies of data from one storage system to another. ONTAP supports mirroring data to other physical platforms and cloud-native services as well.
 - **NetApp SnapLock.** Efficiently administration of non-rewritable data by writing it to special volumes that cannot be overwritten or erased for a designated period.
 - **NetApp SnapVault.** Backs up data from multiple storage systems to a central Snapshot copy that serves as a backup to all designated systems.
 - **NetApp SyncMirror.** Provides real-time, RAID-level mirroring of data to two different plexes of disks that are connected physically to the same controller.
 - **NetApp SnapRestore.** Provides fast restoration of backed-up data on demand from Snapshot copies.
 - **NetApp FlexClone.** Provides instantaneous provisioning of a fully readable and writeable copy of a NetApp volume based on a Snapshot copy.

For more information about ONTAP, see the [ONTAP 9 Documentation Center](#).



NetApp ONTAP is available on-premises, virtualized, or in the cloud.



NetApp platforms

NetApp AFF/FAS

NetApp provides robust all-flash (AFF) and scale-out hybrid (FAS) storage platforms that are tailor-made with low-latency performance, integrated data protection, and multi-protocol support.

Both systems are powered by NetApp ONTAP data management software, the industry's most advanced data-management software for simplified, highly available, cloud-integrated storage management to deliver enterprise-class speed, efficiency, and security for your data fabric needs.

For more information about NETAPP AFF/FAS platforms, click [here](#).

ONTAP Select

ONTAP Select is a software-defined deployment of NetApp ONTAP that can be deployed onto a hypervisor in your environment. It can be installed on VMware vSphere or on KVM, and it provides the full functionality and experience of a hardware-based ONTAP system.

For more information about ONTAP Select, click [here](#).

Cloud Volumes ONTAP

NetApp Cloud Volumes ONTAP is a cloud-deployed version of NetApp ONTAP that can be deployed in a

number of public clouds, including Amazon AWS, Microsoft Azure, and Google Cloud.

For more information about Cloud Volumes ONTAP, click [here](#).

Copyright information

Copyright © 2024 NetApp, Inc. All Rights Reserved. Printed in the U.S. No part of this document covered by copyright may be reproduced in any form or by any means—graphic, electronic, or mechanical, including photocopying, recording, taping, or storage in an electronic retrieval system—without prior written permission of the copyright owner.

Software derived from copyrighted NetApp material is subject to the following license and disclaimer:

THIS SOFTWARE IS PROVIDED BY NETAPP “AS IS” AND WITHOUT ANY EXPRESS OR IMPLIED WARRANTIES, INCLUDING, BUT NOT LIMITED TO, THE IMPLIED WARRANTIES OF MERCHANTABILITY AND FITNESS FOR A PARTICULAR PURPOSE, WHICH ARE HEREBY DISCLAIMED. IN NO EVENT SHALL NETAPP BE LIABLE FOR ANY DIRECT, INDIRECT, INCIDENTAL, SPECIAL, EXEMPLARY, OR CONSEQUENTIAL DAMAGES (INCLUDING, BUT NOT LIMITED TO, PROCUREMENT OF SUBSTITUTE GOODS OR SERVICES; LOSS OF USE, DATA, OR PROFITS; OR BUSINESS INTERRUPTION) HOWEVER CAUSED AND ON ANY THEORY OF LIABILITY, WHETHER IN CONTRACT, STRICT LIABILITY, OR TORT (INCLUDING NEGLIGENCE OR OTHERWISE) ARISING IN ANY WAY OUT OF THE USE OF THIS SOFTWARE, EVEN IF ADVISED OF THE POSSIBILITY OF SUCH DAMAGE.

NetApp reserves the right to change any products described herein at any time, and without notice. NetApp assumes no responsibility or liability arising from the use of products described herein, except as expressly agreed to in writing by NetApp. The use or purchase of this product does not convey a license under any patent rights, trademark rights, or any other intellectual property rights of NetApp.

The product described in this manual may be protected by one or more U.S. patents, foreign patents, or pending applications.

LIMITED RIGHTS LEGEND: Use, duplication, or disclosure by the government is subject to restrictions as set forth in subparagraph (b)(3) of the Rights in Technical Data -Noncommercial Items at DFARS 252.227-7013 (FEB 2014) and FAR 52.227-19 (DEC 2007).

Data contained herein pertains to a commercial product and/or commercial service (as defined in FAR 2.101) and is proprietary to NetApp, Inc. All NetApp technical data and computer software provided under this Agreement is commercial in nature and developed solely at private expense. The U.S. Government has a non-exclusive, non-transferrable, nonsublicensable, worldwide, limited irrevocable license to use the Data only in connection with and in support of the U.S. Government contract under which the Data was delivered. Except as provided herein, the Data may not be used, disclosed, reproduced, modified, performed, or displayed without the prior written approval of NetApp, Inc. United States Government license rights for the Department of Defense are limited to those rights identified in DFARS clause 252.227-7015(b) (FEB 2014).

Trademark information

NETAPP, the NETAPP logo, and the marks listed at <http://www.netapp.com/TM> are trademarks of NetApp, Inc. Other company and product names may be trademarks of their respective owners.