



Deploy Global File Cache Edge instances

Cloud Manager

Tom Onacki
March 22, 2021

This PDF was generated from https://docs.netapp.com/us-en/occm/task_deploy_gfc_edge_instances.html on April 19, 2021. Always check docs.netapp.com for the latest.

Table of Contents

- Deploy Global File Cache Edge instances 1
 - Before you begin 1
 - Deploy the Global File Cache Virtual Template 1
 - Configure the Global File Cache Edge instance 2
 - Update Global File Cache Edge software 3

Deploy Global File Cache Edge instances

After you have verified that your environment meets all the requirements, you install Global File Cache Edge software in each remote office.

Before you begin

To complete Global File Cache Edge configuration tasks, you need the following information:

- Static IP addresses for each Global File Cache instance
- Subnet mask
- Gateway IP address
- The FQDN you wish to assign to each Global File Cache server
- The DNS suffix (optional)
- The user name and password of an administrative user in the domain
- The FQDN and/or IP address of the associated Core servers
- A volume to be used as the Intelligent File Cache. It is recommended this be at least 2x the size of the active dataset. This should be formatted as NTFS and assigned as `D:\`.

Commonly used TCP ports

There are several TCP ports used by Global File Cache services. It is mandatory that the devices can communicate on these ports and they be excluded from any WAN optimization devices or firewall restriction policies:

- Global File Cache Licensing TCP Port: 443
- Global File Cache TCP Ports: 6618-6630

Deploy the Global File Cache Virtual Template

The virtual template (`.OVA` and `.VHD`) images contain the latest release of the Global File Cache software. If you are deploying Global File Cache using the `.OVA` or `.VHD` virtual machine (VM) template, follow the steps as outlined in this section. It is assumed that you understand how to deploy the `.OVA` or `.VHD` template on the designated hypervisor platform.

Ensure that VM preferences, including resource reservations, are in line with the requirements as outlined in [Virtual deployment requirements](#).

Steps

1. Extract the package from the template you downloaded.
2. Deploy the virtual template. Refer to the following videos before you start the deployment:
 - [Deploy the Virtual Template on VMware](#)
 - [Deploy the Virtual Template on Hyper-V](#)
3. After the Virtual Template has been deployed, and you have configured the VM settings, start the VM.
4. During initial boot, when the Windows Server 2016 or 2019 operating system is preparing for first use,

complete the out-of-the-box experience by installing the correct drivers and installing the necessary components for the respective hardware.

5. When the base install of the Global File Cache Edge instance has been completed, the Windows Server 2016 or 2019 operating system will guide you through an initial configuration wizard to configure operating system specifics such as localization and product key.
6. After the initial configuration wizard has completed, log in locally to the Windows Server 2016 or 2019 operating system with the following credentials:
 - User name: **FASTAdmin**
 - Password: **Tal0nFAST!**
7. Configure your Windows Server VM, join to the organization's Active Directory domain, and proceed to the Global File Cache Edge configuration section.

Configure the Global File Cache Edge instance

The Global File Cache Edge instance connects to a Global File Cache Core to provide users at the branch office access to data center file server resources.



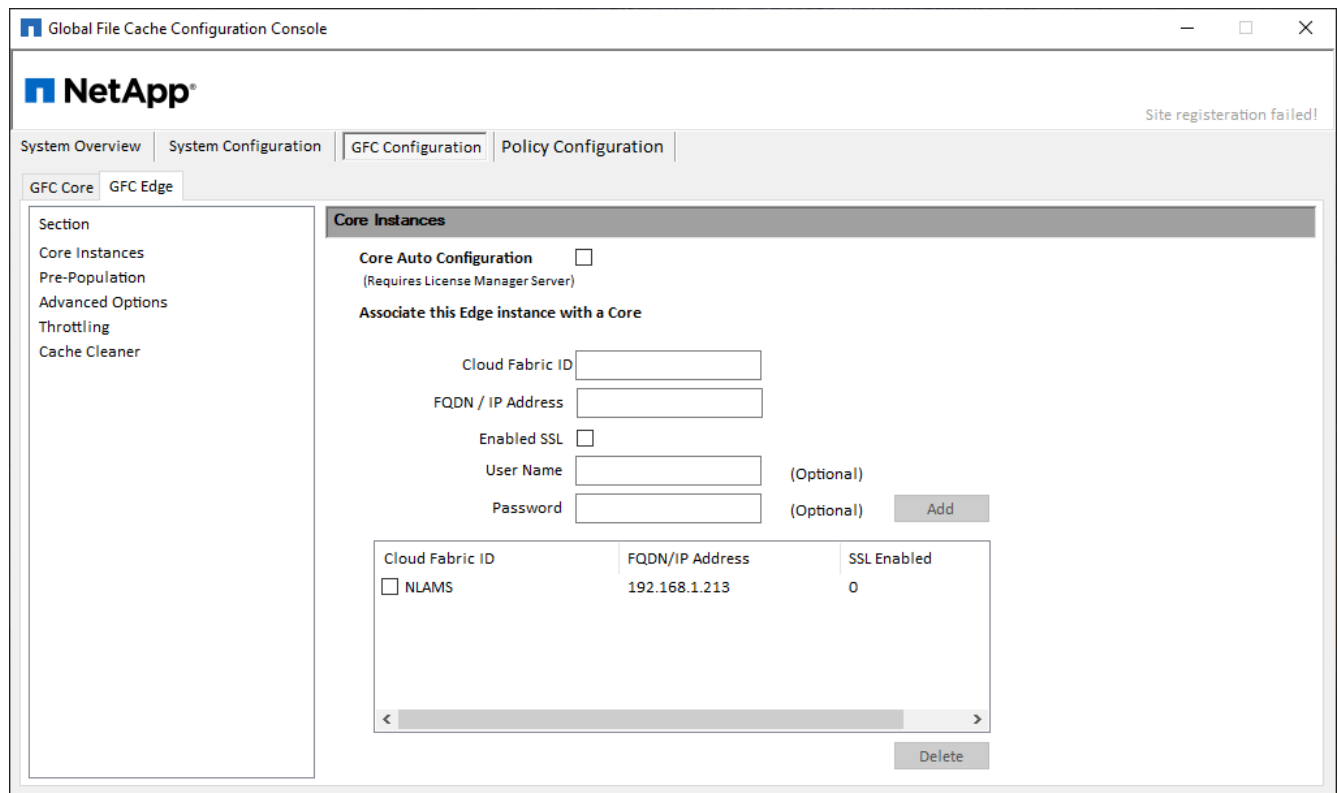
The Edge instance must be licensed as part of your Cloud Volumes ONTAP deployment prior to beginning the configuration. See [Licensing](#) for more information about licensing.

If your configuration requires more than one Global File Cache Core to be installed because of a large number of Edge instances, you will configure some Edge instances to connect to the first Core and others to connect to the second Core. Make sure you have the FQDN or IP address, and other required information, for the correct Core instance.

To configure the Edge instance, complete the following steps:

Steps

1. Click **Perform** next to the unchecked Core Configuration step listed in the "Edge Configuration Steps" section of the Initial Configuration assistant. This opens a new tab, GFC Edge, and shows the section *Core Instances*.
2. Provide the **Cloud Fabric ID** of the Global File Cache Core server. The Cloud Fabric ID is typically the NetBIOS name or the geographical location of the backend file server.
3. Provide the **FQDN/IP Address** of the Global File Cache Core server:
 - a. (Optional) Check the **SSL** box to enable SSL support for enhanced encryption from the Edge to the Core.
 - b. Enter the User Name and Password, which are the credentials of the Service Account used on the Core.
4. Click **Add** to confirm the addition of the Global File Cache Core appliance. A confirmation box will appear. Click **OK** to dismiss it.



Update Global File Cache Edge software

Global File Cache frequently releases updates to the software, either patches, enhancements, or new features/functionality. Although the virtual template (.OVA and .VHD) images contain the latest release of the Global File Cache software, it is possible that a newer version is available on the NetApp Support Download portal.

Ensure that your Global File Cache instances are up to date with the latest version.



This software package can also be used for pristine installations on Microsoft Windows Server 2016 Standard or Datacenter edition, or Windows Server 2019 Standard or Datacenter edition, or used as part of your upgrade strategy.

Below you can find the steps required to update the Global File Cache installation package:

Steps

1. After saving the latest installation package to the desired Windows Server instance, double-click it to run the installation executable.
2. Click **Next** to continue the process.
3. Click **Next** to continue.
4. Accept the Licensing Agreement and click **Next**.
5. Select the desired Installation Destination Location.

NetApp recommends that you use the default installation location.

6. Click **Next** to continue.

7. Select the Start Menu Folder.
8. Click **Next** to continue.
9. Verify your installation selections and click **Install** to begin the installation.

The installation process will start.

10. After the installation has completed, reboot the server when prompted.

What's Next?

For details about Global File Cache Edge advanced configuration, see the [NetApp Global File Cache User Guide](#).

Copyright Information

Copyright © 2021 NetApp, Inc. All rights reserved. Printed in the U.S. No part of this document covered by copyright may be reproduced in any form or by any means-graphic, electronic, or mechanical, including photocopying, recording, taping, or storage in an electronic retrieval system-without prior written permission of the copyright owner.

Software derived from copyrighted NetApp material is subject to the following license and disclaimer:

THIS SOFTWARE IS PROVIDED BY NETAPP "AS IS" AND WITHOUT ANY EXPRESS OR IMPLIED WARRANTIES, INCLUDING, BUT NOT LIMITED TO, THE IMPLIED WARRANTIES OF MERCHANTABILITY AND FITNESS FOR A PARTICULAR PURPOSE, WHICH ARE HEREBY DISCLAIMED. IN NO EVENT SHALL NETAPP BE LIABLE FOR ANY DIRECT, INDIRECT, INCIDENTAL, SPECIAL, EXEMPLARY, OR CONSEQUENTIAL DAMAGES (INCLUDING, BUT NOT LIMITED TO, PROCUREMENT OF SUBSTITUTE GOODS OR SERVICES; LOSS OF USE, DATA, OR PROFITS; OR BUSINESS INTERRUPTION) HOWEVER CAUSED AND ON ANY THEORY OF LIABILITY, WHETHER IN CONTRACT, STRICT LIABILITY, OR TORT (INCLUDING NEGLIGENCE OR OTHERWISE) ARISING IN ANY WAY OUT OF THE USE OF THIS SOFTWARE, EVEN IF ADVISED OF THE POSSIBILITY OF SUCH DAMAGE.

NetApp reserves the right to change any products described herein at any time, and without notice. NetApp assumes no responsibility or liability arising from the use of products described herein, except as expressly agreed to in writing by NetApp. The use or purchase of this product does not convey a license under any patent rights, trademark rights, or any other intellectual property rights of NetApp.

The product described in this manual may be protected by one or more U.S. patents, foreign patents, or pending applications.

RESTRICTED RIGHTS LEGEND: Use, duplication, or disclosure by the government is subject to restrictions as set forth in subparagraph (c)(1)(ii) of the Rights in Technical Data and Computer Software clause at DFARS 252.277-7103 (October 1988) and FAR 52-227-19 (June 1987).

Trademark Information

NETAPP, the NETAPP logo, and the marks listed at <http://www.netapp.com/TM> are trademarks of NetApp, Inc. Other company and product names may be trademarks of their respective owners.