



Changing OnCommand Insight internal user passwords

OnCommand Insight

NetApp
October 24, 2024

This PDF was generated from <https://docs.netapp.com/us-en/oncommand-insight/config-admin/changing-passwords-in-the-server-connection-configuration-ui.html> on October 24, 2024. Always check docs.netapp.com for the latest.

Table of Contents

- Changing OnCommand Insight internal user passwords 1
 - Before you begin 1
 - About this task 1
 - Changing the “inventory” and “dwh_internal” passwords using the Server Connection Configuration UI 2
 - Changing the dwh password using the ODBC Administration tool 4

Changing OnCommand Insight internal user passwords

Security policies might require you to change the passwords in your OnCommand Insight environment. Some of the passwords on one server exist on a different server in the environment, requiring that you change the password on both servers. For example, when you change the “inventory” user password on the Insight Server you must match the “inventory” user password on the Data Warehouse server Connector configured for that Insight Server.

Before you begin



You should understand the dependencies of the user accounts before you change passwords. Failing to update passwords on all required servers will result in communication failures between the Insight components.

About this task

The following table lists the internal user passwords for the Insight Server and lists the Insight components that have dependent passwords that need to match the new password.

Insight Server Passwords	Required changes
_internal	
acquisition	LAU, RAU
dwh_internal	Data Warehouse
hosts	
inventory	Data Warehouse
root	

The following table lists the internal user passwords for the Data Warehouse and lists the Insight components that have dependent passwords that need to match the new password.

Data Warehouse Passwords	Required changes
cognos_admin	
dwh	

dwh_internal (Changed using the Server Connector configuration UI)	Insight server
dwhuser	
hosts	
inventory (Changed using the Server Connector configuration UI)	Insight server
root	

Changing passwords in the DWH Server Connection Configuration UI

The following table lists the user password for the LAU and lists the Insight components that have dependent passwords that need to match the new password.

LAU Passwords	Required changes
acquisition	Insight Server, RAU

Changing the “inventory” and “dwh_internal” passwords using the Server Connection Configuration UI

If you need to change the “inventory” or “dwh_internal” passwords to match those on the Insight server you use the Data Warehouse UI.

Before you begin

You must be logged in as administrator to perform this task.

Steps

1. Log in to the Data Warehouse Portal at <https://hostname/dwh>, where hostname is the name of the system where OnCommand Insight Data Warehouse is installed.
2. From the navigation pane on the left, click **Connectors**.

The **Edit Connector** screen is displayed.

Edit Connector

ID:	<input type="text" value="1"/>
Encryption:	<input type="text" value="Enabled"/>
Name:	<input type="text" value="Oci-stg06-s12r2.nane.netapp.com"/>
Host:	<input type="text" value="Oci-stg06-s12r2.nane.netapp.com"/>
Database user name:	<input type="text" value="inventory"/>
Database password:	<input type="password" value="••••••••"/>

[Advanced](#) ▼

3. Enter a new “inventory” password for the **Database password** field.
4. Click **Save**
5. To change the “dwh_internal” password, click **Advanced**.

The Edit Connector Advanced screen is displayed.

Edit Connector

ID:	<input type="text" value="1"/>
Encryption:	<input type="text" value="Enabled"/>
Name:	<input type="text" value="Oci-stg06-s12r2.nane.netapp.com"/>
Host:	<input type="text" value="Oci-stg06-s12r2.nane.netapp.com"/>
Database user name:	<input type="text" value="inventory"/>
Database password:	<input type="password" value="....."/>
Server user name:	<input type="text" value="dwh_internal"/>
Server password:	<input type="password" value="....."/>
HTTPS port:	<input type="text" value="443"/>
TCP port:	<input type="text" value="3306"/>

[Basic ^](#)

6. Enter the new password in the **Server password** field:

7. Click save.

Changing the dwh password using the ODBC Administration tool

When you change the password on for the dwh user on the Insight server, the password must also be changed on the Data Warehouse server. You use the ODBC Data Source Administrator tool to change the password on the Data Warehouse.

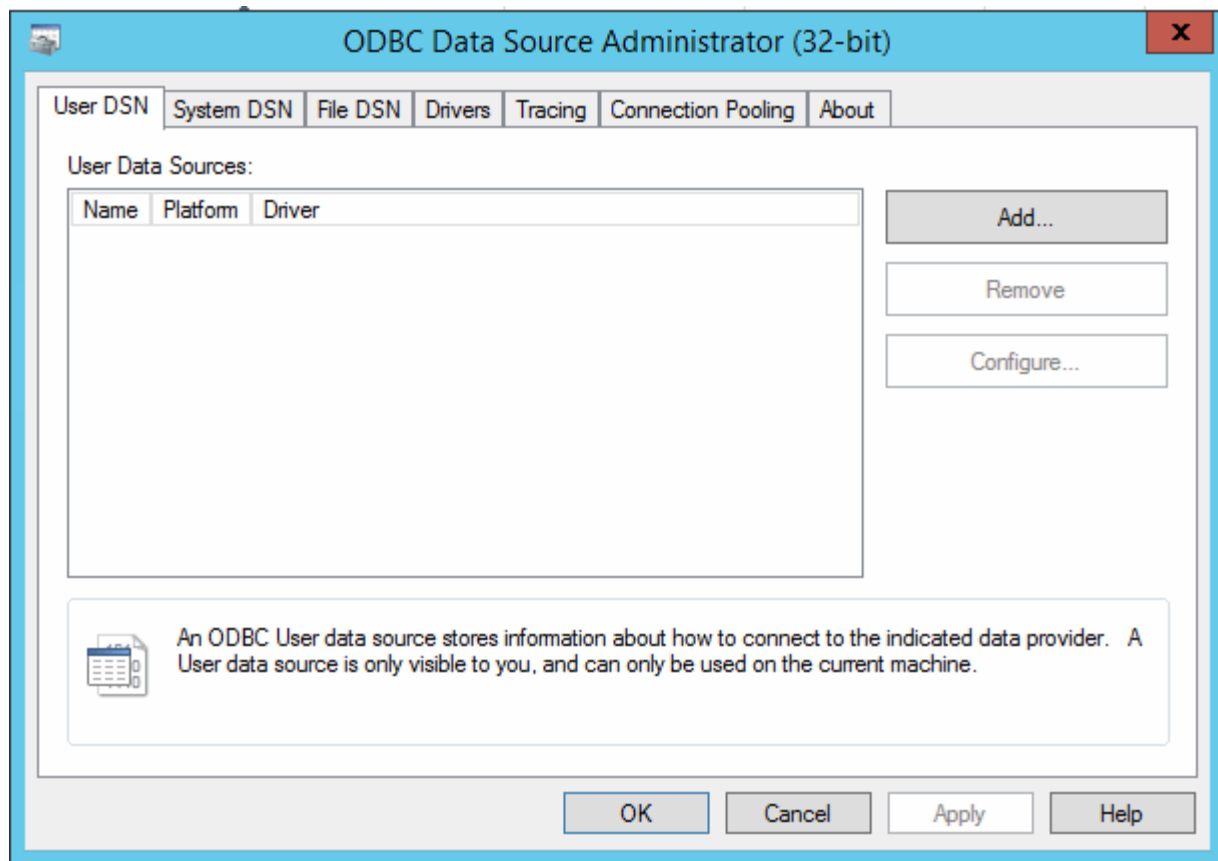
Before you begin

You must perform a remote login to the Data Warehouse server using an account with administrator privileges.

Steps

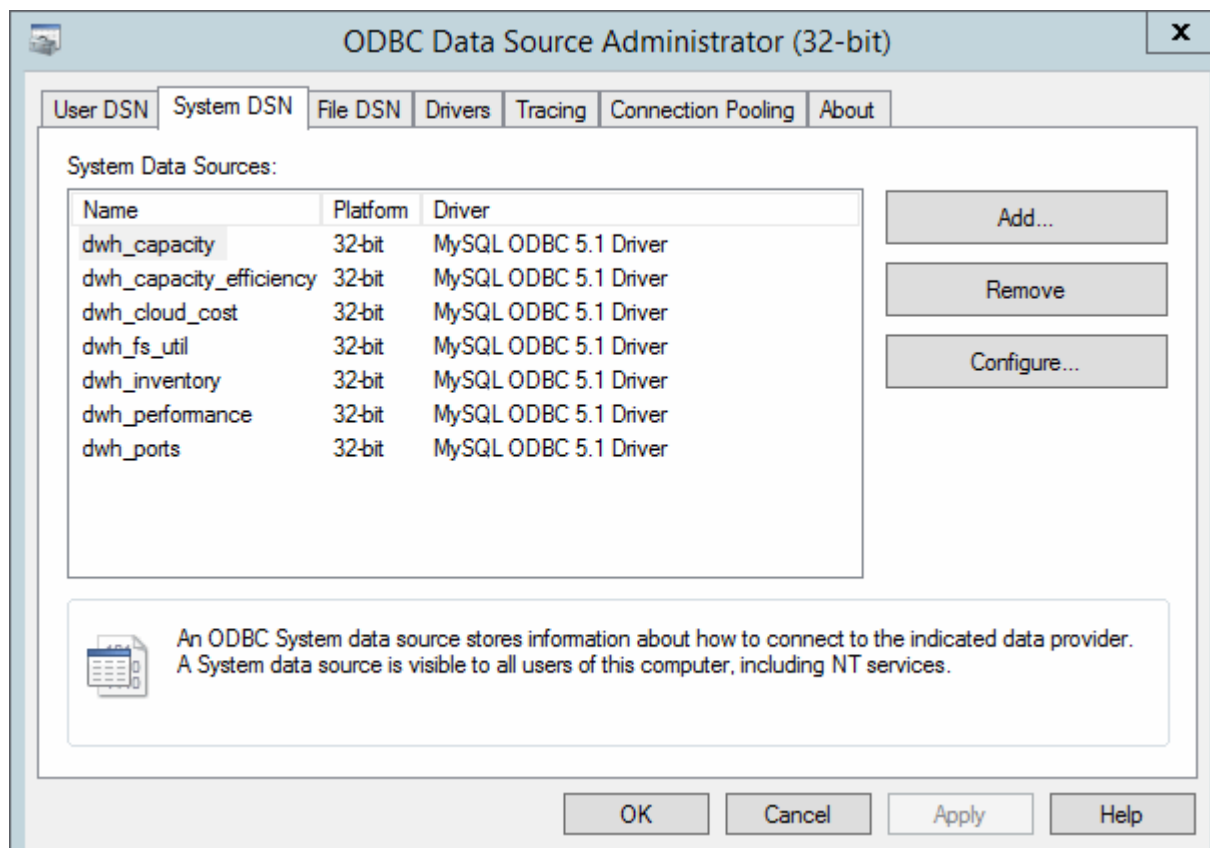
1. Perform a remote login to the server hosting that Data Warehouse.
2. Access the ODBC Administration tool at `C:\Windows\SysWOW64\odbcad32.exe`

The system displays the ODBC Data Source Administrator screen.



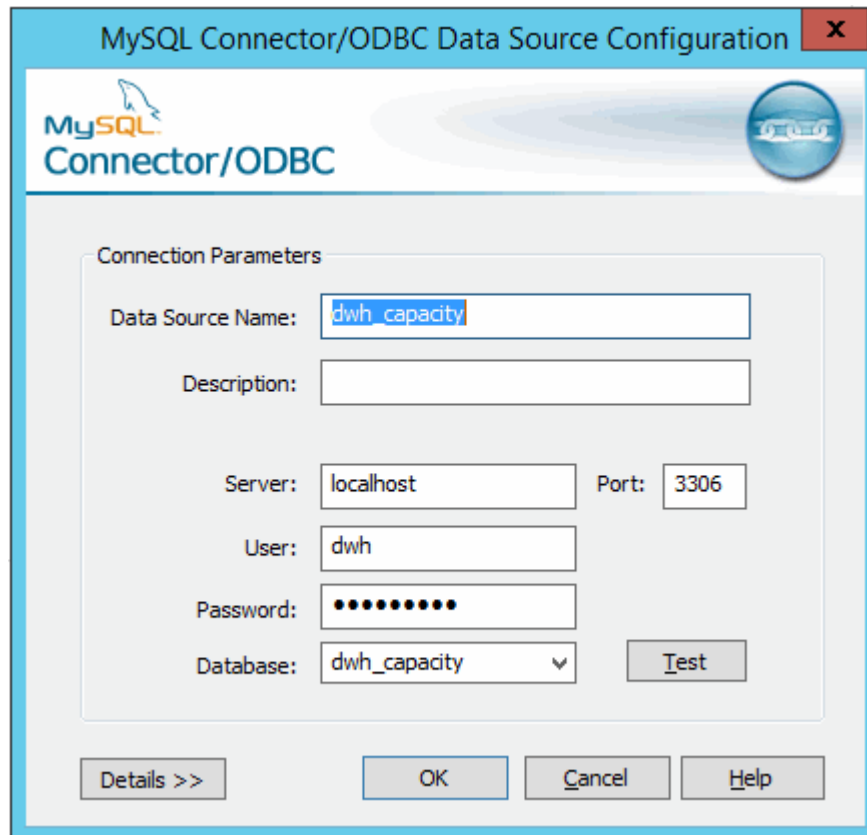
3. Click **System DSN**

The system data sources are displayed.



4. Select an OnCommand Insight Data Source from the list.
5. Click **Configure**

The Data Source Configuration screen is displayed.



The image shows a screenshot of the "MySQL Connector/ODBC Data Source Configuration" dialog box. The window has a blue title bar with the text "MySQL Connector/ODBC Data Source Configuration" and a red close button. Below the title bar is a header area with the MySQL logo and the text "Connector/ODBC". The main area is titled "Connection Parameters" and contains several input fields: "Data Source Name" (containing "dwh_capacity"), "Description" (empty), "Server" (containing "localhost"), "Port" (containing "3306"), "User" (containing "dwh"), "Password" (containing masked characters), and "Database" (containing "dwh_capacity" with a dropdown arrow). There is a "Test" button next to the Database field. At the bottom of the dialog are four buttons: "Details >>", "OK", "Cancel", and "Help".

6. Enter the new password in the **Password** field.

Copyright information

Copyright © 2024 NetApp, Inc. All Rights Reserved. Printed in the U.S. No part of this document covered by copyright may be reproduced in any form or by any means—graphic, electronic, or mechanical, including photocopying, recording, taping, or storage in an electronic retrieval system—without prior written permission of the copyright owner.

Software derived from copyrighted NetApp material is subject to the following license and disclaimer:

THIS SOFTWARE IS PROVIDED BY NETAPP “AS IS” AND WITHOUT ANY EXPRESS OR IMPLIED WARRANTIES, INCLUDING, BUT NOT LIMITED TO, THE IMPLIED WARRANTIES OF MERCHANTABILITY AND FITNESS FOR A PARTICULAR PURPOSE, WHICH ARE HEREBY DISCLAIMED. IN NO EVENT SHALL NETAPP BE LIABLE FOR ANY DIRECT, INDIRECT, INCIDENTAL, SPECIAL, EXEMPLARY, OR CONSEQUENTIAL DAMAGES (INCLUDING, BUT NOT LIMITED TO, PROCUREMENT OF SUBSTITUTE GOODS OR SERVICES; LOSS OF USE, DATA, OR PROFITS; OR BUSINESS INTERRUPTION) HOWEVER CAUSED AND ON ANY THEORY OF LIABILITY, WHETHER IN CONTRACT, STRICT LIABILITY, OR TORT (INCLUDING NEGLIGENCE OR OTHERWISE) ARISING IN ANY WAY OUT OF THE USE OF THIS SOFTWARE, EVEN IF ADVISED OF THE POSSIBILITY OF SUCH DAMAGE.

NetApp reserves the right to change any products described herein at any time, and without notice. NetApp assumes no responsibility or liability arising from the use of products described herein, except as expressly agreed to in writing by NetApp. The use or purchase of this product does not convey a license under any patent rights, trademark rights, or any other intellectual property rights of NetApp.

The product described in this manual may be protected by one or more U.S. patents, foreign patents, or pending applications.

LIMITED RIGHTS LEGEND: Use, duplication, or disclosure by the government is subject to restrictions as set forth in subparagraph (b)(3) of the Rights in Technical Data -Noncommercial Items at DFARS 252.227-7013 (FEB 2014) and FAR 52.227-19 (DEC 2007).

Data contained herein pertains to a commercial product and/or commercial service (as defined in FAR 2.101) and is proprietary to NetApp, Inc. All NetApp technical data and computer software provided under this Agreement is commercial in nature and developed solely at private expense. The U.S. Government has a non-exclusive, non-transferrable, nonsublicensable, worldwide, limited irrevocable license to use the Data only in connection with and in support of the U.S. Government contract under which the Data was delivered. Except as provided herein, the Data may not be used, disclosed, reproduced, modified, performed, or displayed without the prior written approval of NetApp, Inc. United States Government license rights for the Department of Defense are limited to those rights identified in DFARS clause 252.227-7015(b) (FEB 2014).

Trademark information

NETAPP, the NETAPP logo, and the marks listed at <http://www.netapp.com/TM> are trademarks of NetApp, Inc. Other company and product names may be trademarks of their respective owners.