



Automation technologies

ONTAP Automation

NetApp
June 23, 2022

Table of Contents

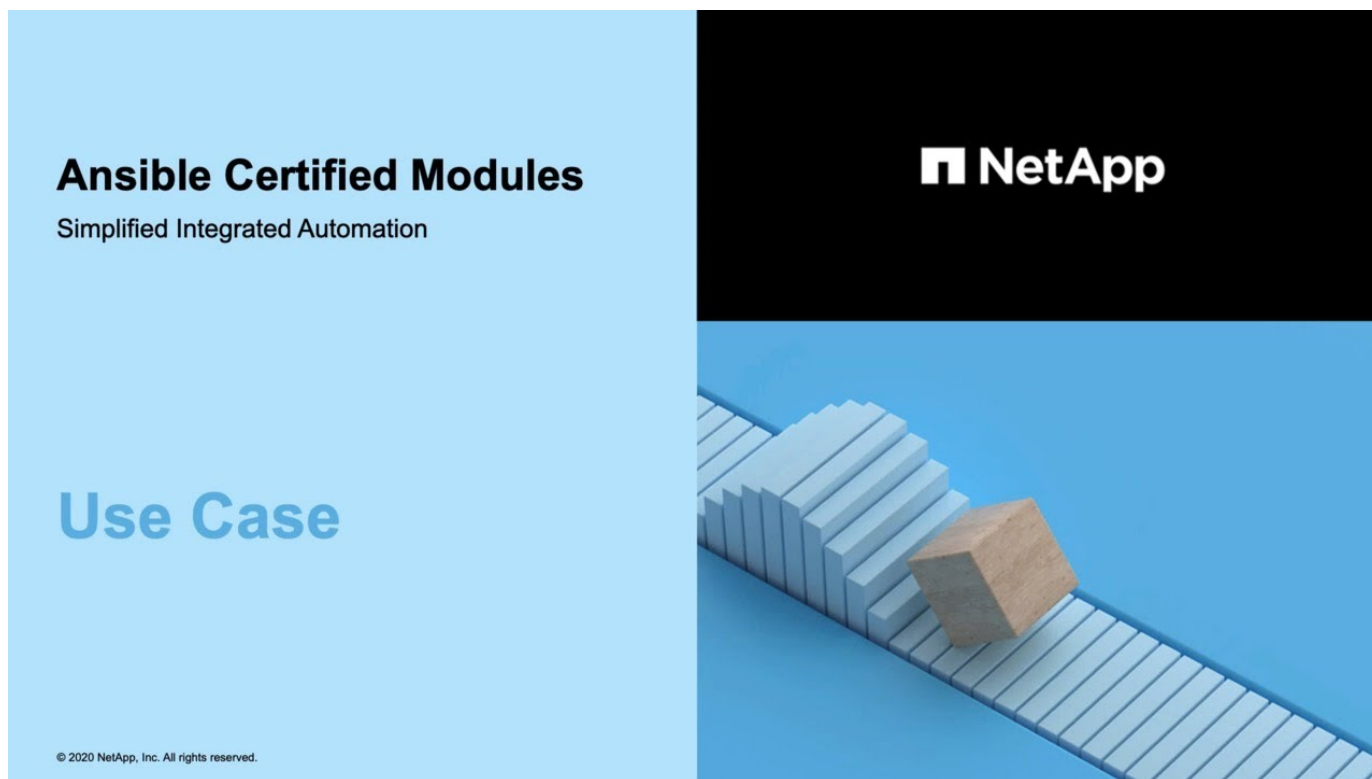
- Automation technologies 1
 - ONTAP and Ansible automation 1
 - Blogs about ONTAP automation 2

Automation technologies

ONTAP and Ansible automation

There are several resources available to help you understand how Ansible can be used to automate the deployment and administration of ONTAP storage resources.

Videos



The above video is also available through NetApp TV at [Ansible Certified Modules](#).

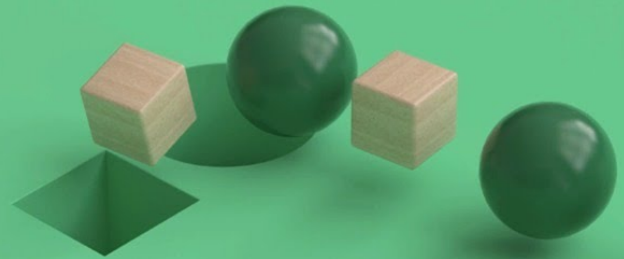
Ansible Certified Modules

Simplified Integrated Automation



Tech Clip

© 2020 NetApp, Inc. All rights reserved.



Developer resources

See [NetApp Ansible DevOps Solutions](#) for help getting started with Ansible in a DevOps environment.

Blogs about ONTAP automation

There are several blog articles available to help you better understand the different technologies and approaches to ONTAP automation.

Using the private CLI passthrough with the ONTAP REST API

The CLI passthrough provides a technique for executing ONTAP CLI commands using the REST API.

netapp.io/2020/11/09/private-cli-passthrough-ontap-rest-api

Getting Started with NetApp and Ansible: Install Ansible

If you're new to using Ansible for ONTAP automation, this is a good place to start.

netapp.io/2018/10/08/getting-started-with-netapp-and-ansible-install-ansible

Copyright Information

Copyright © 2022 NetApp, Inc. All rights reserved. Printed in the U.S. No part of this document covered by copyright may be reproduced in any form or by any means-graphic, electronic, or mechanical, including photocopying, recording, taping, or storage in an electronic retrieval system-without prior written permission of the copyright owner.

Software derived from copyrighted NetApp material is subject to the following license and disclaimer:

THIS SOFTWARE IS PROVIDED BY NETAPP "AS IS" AND WITHOUT ANY EXPRESS OR IMPLIED WARRANTIES, INCLUDING, BUT NOT LIMITED TO, THE IMPLIED WARRANTIES OF MERCHANTABILITY AND FITNESS FOR A PARTICULAR PURPOSE, WHICH ARE HEREBY DISCLAIMED. IN NO EVENT SHALL NETAPP BE LIABLE FOR ANY DIRECT, INDIRECT, INCIDENTAL, SPECIAL, EXEMPLARY, OR CONSEQUENTIAL DAMAGES (INCLUDING, BUT NOT LIMITED TO, PROCUREMENT OF SUBSTITUTE GOODS OR SERVICES; LOSS OF USE, DATA, OR PROFITS; OR BUSINESS INTERRUPTION) HOWEVER CAUSED AND ON ANY THEORY OF LIABILITY, WHETHER IN CONTRACT, STRICT LIABILITY, OR TORT (INCLUDING NEGLIGENCE OR OTHERWISE) ARISING IN ANY WAY OUT OF THE USE OF THIS SOFTWARE, EVEN IF ADVISED OF THE POSSIBILITY OF SUCH DAMAGE.

NetApp reserves the right to change any products described herein at any time, and without notice. NetApp assumes no responsibility or liability arising from the use of products described herein, except as expressly agreed to in writing by NetApp. The use or purchase of this product does not convey a license under any patent rights, trademark rights, or any other intellectual property rights of NetApp.

The product described in this manual may be protected by one or more U.S. patents, foreign patents, or pending applications.

RESTRICTED RIGHTS LEGEND: Use, duplication, or disclosure by the government is subject to restrictions as set forth in subparagraph (c)(1)(ii) of the Rights in Technical Data and Computer Software clause at DFARS 252.277-7103 (October 1988) and FAR 52-227-19 (June 1987).

Trademark Information

NETAPP, the NETAPP logo, and the marks listed at <http://www.netapp.com/TM> are trademarks of NetApp, Inc. Other company and product names may be trademarks of their respective owners.