



Verify phase workflow

ONTAP

NetApp
July 20, 2021

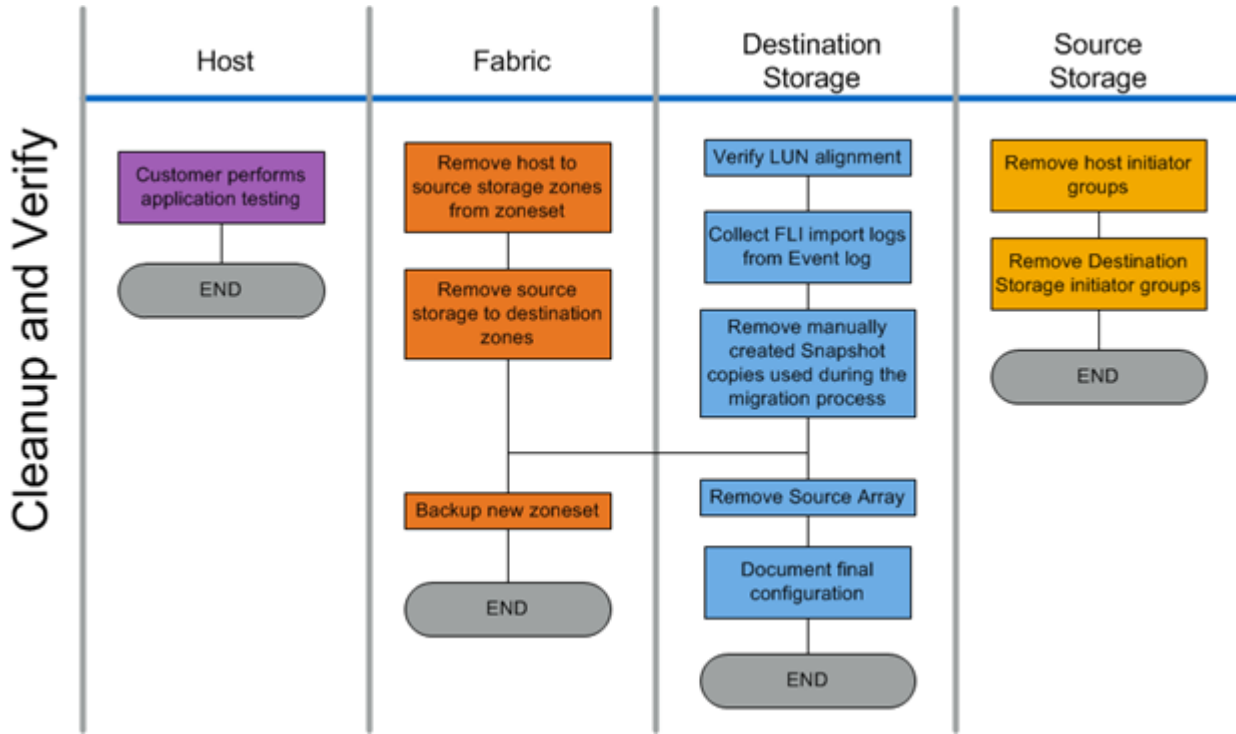
Table of Contents

Verify phase workflow. 1

Verify phase workflow

The verify phase of the migration process focuses on the post-migration cleanup and confirming the accuracy of the execution of the migration plan. Initiator records on the source storage and the zone between the source and destination zone are removed.

The following figure shows the verify phase workflow.



The verify phase tasks are listed in the following table.

Component	Tasks
Host	Customer performs application testing.
Fabric	<ol style="list-style-type: none"> 1. Remove host to source storage zones from the zoneset. 2. Remove source storage to destination zones. 3. Backup the new zoneset.
Destination storage	<ol style="list-style-type: none"> 1. Verify LUN alignment. 2. Collect FLI import logs from the Event log. 3. Remove manually created Snapshot copies used during the migration process. 4. Remove source array. 5. Document final configuration.

Component	Tasks
Source storage	<ol style="list-style-type: none"><li data-bbox="829 155 1328 191">1. Remove host storage initiator groups.<li data-bbox="829 205 1409 241">2. Remove destination storage initiator groups.

Copyright Information

Copyright © 2021 NetApp, Inc. All rights reserved. Printed in the U.S. No part of this document covered by copyright may be reproduced in any form or by any means-graphic, electronic, or mechanical, including photocopying, recording, taping, or storage in an electronic retrieval system- without prior written permission of the copyright owner.

Software derived from copyrighted NetApp material is subject to the following license and disclaimer:

THIS SOFTWARE IS PROVIDED BY NETAPP "AS IS" AND WITHOUT ANY EXPRESS OR IMPLIED WARRANTIES, INCLUDING, BUT NOT LIMITED TO, THE IMPLIED WARRANTIES OF MERCHANTABILITY AND FITNESS FOR A PARTICULAR PURPOSE, WHICH ARE HEREBY DISCLAIMED. IN NO EVENT SHALL NETAPP BE LIABLE FOR ANY DIRECT, INDIRECT, INCIDENTAL, SPECIAL, EXEMPLARY, OR CONSEQUENTIAL DAMAGES (INCLUDING, BUT NOT LIMITED TO, PROCUREMENT OF SUBSTITUTE GOODS OR SERVICES; LOSS OF USE, DATA, OR PROFITS; OR BUSINESS INTERRUPTION) HOWEVER CAUSED AND ON ANY THEORY OF LIABILITY, WHETHER IN CONTRACT, STRICT LIABILITY, OR TORT (INCLUDING NEGLIGENCE OR OTHERWISE) ARISING IN ANY WAY OUT OF THE USE OF THIS SOFTWARE, EVEN IF ADVISED OF THE POSSIBILITY OF SUCH DAMAGE.

NetApp reserves the right to change any products described herein at any time, and without notice. NetApp assumes no responsibility or liability arising from the use of products described herein, except as expressly agreed to in writing by NetApp. The use or purchase of this product does not convey a license under any patent rights, trademark rights, or any other intellectual property rights of NetApp.

The product described in this manual may be protected by one or more U.S. patents, foreign patents, or pending applications.

RESTRICTED RIGHTS LEGEND: Use, duplication, or disclosure by the government is subject to restrictions as set forth in subparagraph (c)(1)(ii) of the Rights in Technical Data and Computer Software clause at DFARS 252.277-7103 (October 1988) and FAR 52-227-19 (June 1987).

Trademark Information

NETAPP, the NETAPP logo, and the marks listed at <http://www.netapp.com/TM> are trademarks of NetApp, Inc. Other company and product names may be trademarks of their respective owners.