



Removing source LUNs from hosts

ONTAP

NetApp
July 24, 2021

Table of Contents

Removing source LUNs from hosts 1

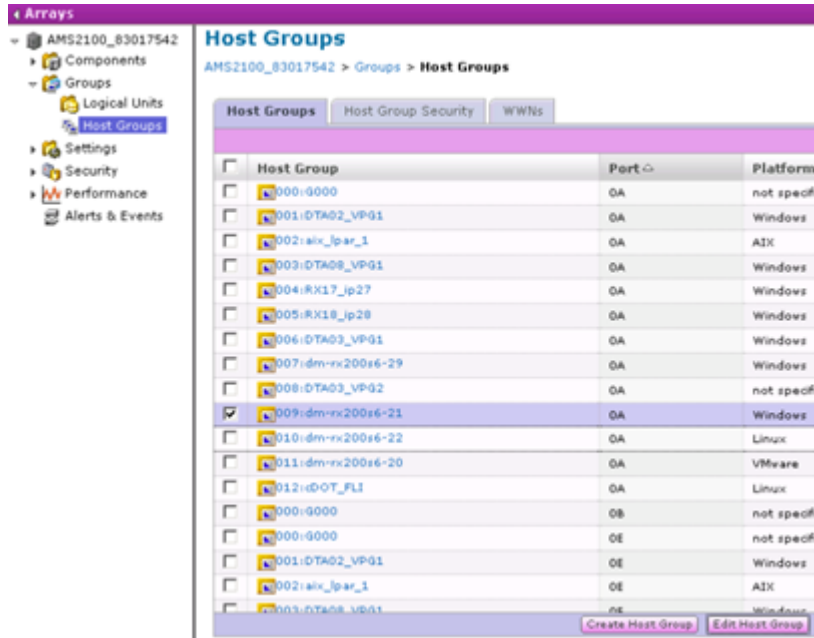
Removing source LUNs from hosts

The following steps describe how to remove source LUNs from your host after FLI migration is complete.

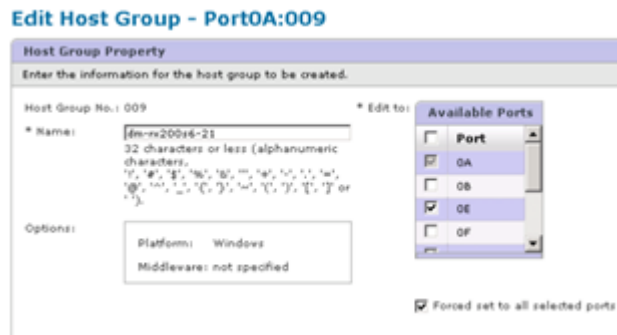
To remove source LUNs from the host, complete the following steps:

Steps

1. Log in to Hitachi Storage Navigator Modular.
2. Select the host that is migrated and select **Edit Host Group**.



3. Select the **Ports** and select **Forced set** to all selected ports.



4. Select the host LUNs that are migrated from Assigned Logical LUNs. Use LUN Names for each host mentioned in Source LUNs worksheet. Here, select LUNs of Windows 2012 host and select **Remove**.

WWNs Logical Units Options

Select the H-LUN and one or more available logical units, and click Add to assign the selected logical units to the host group. Check selected LUN and press Remove to un-assign the LUN from host group.

LU Mapping:

H-LUNs

Rows/Page: 25 Page: 1 of 2

H-LUN
<input checked="" type="checkbox"/> 0003
<input type="checkbox"/> 0004
<input type="checkbox"/> 0005
<input type="checkbox"/> 0006
<input type="checkbox"/> 0007

Available Logical Units

Assigned Logical Units

Rows/Page: 25 Page: 1 of 1

<input checked="" type="checkbox"/> H-LUN	LUN	Capacity	RAID Group	DP Pool
<input checked="" type="checkbox"/> 0000	0030	40.0GB	000	N/A
<input checked="" type="checkbox"/> 0001	0014	2.0GB	000	N/A
<input checked="" type="checkbox"/> 0002	0015	3.0GB	000	N/A

Add > < Remove

5. Repeat the steps for Linux and VMware ESX hosts.

Copyright Information

Copyright © 2021 NetApp, Inc. All rights reserved. Printed in the U.S. No part of this document covered by copyright may be reproduced in any form or by any means-graphic, electronic, or mechanical, including photocopying, recording, taping, or storage in an electronic retrieval system- without prior written permission of the copyright owner.

Software derived from copyrighted NetApp material is subject to the following license and disclaimer:

THIS SOFTWARE IS PROVIDED BY NETAPP "AS IS" AND WITHOUT ANY EXPRESS OR IMPLIED WARRANTIES, INCLUDING, BUT NOT LIMITED TO, THE IMPLIED WARRANTIES OF MERCHANTABILITY AND FITNESS FOR A PARTICULAR PURPOSE, WHICH ARE HEREBY DISCLAIMED. IN NO EVENT SHALL NETAPP BE LIABLE FOR ANY DIRECT, INDIRECT, INCIDENTAL, SPECIAL, EXEMPLARY, OR CONSEQUENTIAL DAMAGES (INCLUDING, BUT NOT LIMITED TO, PROCUREMENT OF SUBSTITUTE GOODS OR SERVICES; LOSS OF USE, DATA, OR PROFITS; OR BUSINESS INTERRUPTION) HOWEVER CAUSED AND ON ANY THEORY OF LIABILITY, WHETHER IN CONTRACT, STRICT LIABILITY, OR TORT (INCLUDING NEGLIGENCE OR OTHERWISE) ARISING IN ANY WAY OUT OF THE USE OF THIS SOFTWARE, EVEN IF ADVISED OF THE POSSIBILITY OF SUCH DAMAGE.

NetApp reserves the right to change any products described herein at any time, and without notice. NetApp assumes no responsibility or liability arising from the use of products described herein, except as expressly agreed to in writing by NetApp. The use or purchase of this product does not convey a license under any patent rights, trademark rights, or any other intellectual property rights of NetApp.

The product described in this manual may be protected by one or more U.S. patents, foreign patents, or pending applications.

RESTRICTED RIGHTS LEGEND: Use, duplication, or disclosure by the government is subject to restrictions as set forth in subparagraph (c)(1)(ii) of the Rights in Technical Data and Computer Software clause at DFARS 252.277-7103 (October 1988) and FAR 52-227-19 (June 1987).

Trademark Information

NETAPP, the NETAPP logo, and the marks listed at <http://www.netapp.com/TM> are trademarks of NetApp, Inc. Other company and product names may be trademarks of their respective owners.