



Recovering from a multi-controller or storage failure

ONTAP MetroCluster

aherbin, ntap-bmegan, zachary wambold
April 12, 2021

Table of Contents

Recovering from a multi-controller or storage failure 1

Recovering from a multi-controller or storage failure

If the controller failure extends to all controller modules on one side of a DR group in a MetroCluster configuration (including a single controller in a two-node MetroCluster configuration), or storage has been replaced, you must replace the equipment and reassign ownership of drives to recover from the disaster.

- You should review the available recovery procedures before deciding to use this procedure.

Choosing the correct recovery procedure

- The disaster site must be fenced off.

Fencing off the disaster site.

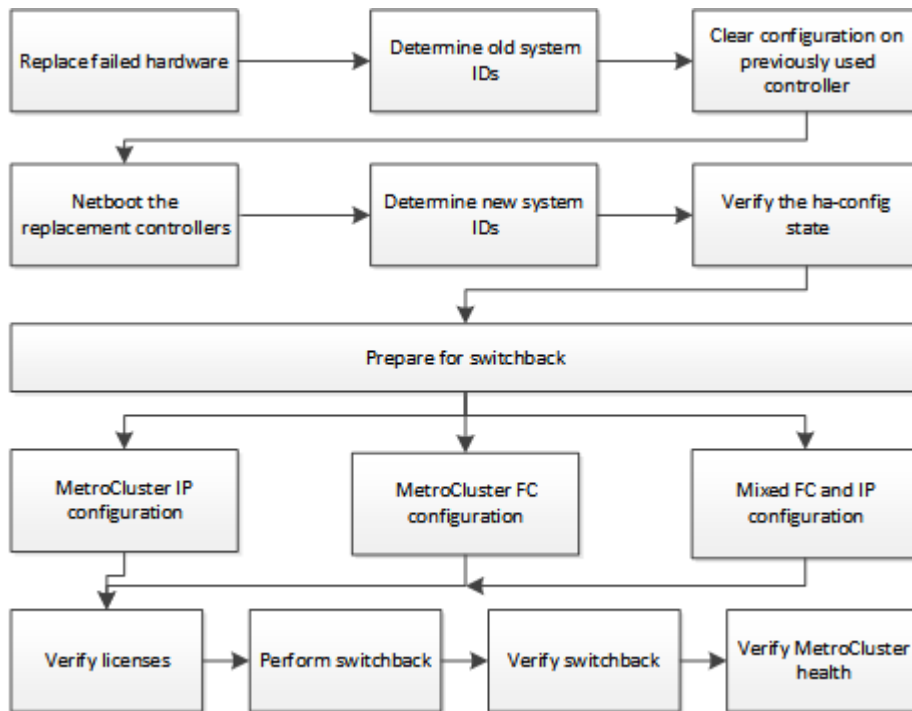
- Switchover must have been performed.

Performing a forced switchover.

- Replacement drives and the controller modules must be new and must not have been assigned ownership previously.

The examples in this procedure show two or four-node configurations. If you have an eight-node configuration (two DR groups), you must take into account any failures and perform the required recovery task on the additional controller modules.

This procedure uses the following workflow:



This procedure can be used when performing recovery on a system that was in mid-transition when the failure occurred. In that case, you must perform the appropriate steps when preparing for switchback, as indicated in

the procedure.

Copyright Information

Copyright © 2021 NetApp, Inc. All rights reserved. Printed in the U.S. No part of this document covered by copyright may be reproduced in any form or by any means-graphic, electronic, or mechanical, including photocopying, recording, taping, or storage in an electronic retrieval system- without prior written permission of the copyright owner.

Software derived from copyrighted NetApp material is subject to the following license and disclaimer:

THIS SOFTWARE IS PROVIDED BY NETAPP "AS IS" AND WITHOUT ANY EXPRESS OR IMPLIED WARRANTIES, INCLUDING, BUT NOT LIMITED TO, THE IMPLIED WARRANTIES OF MERCHANTABILITY AND FITNESS FOR A PARTICULAR PURPOSE, WHICH ARE HEREBY DISCLAIMED. IN NO EVENT SHALL NETAPP BE LIABLE FOR ANY DIRECT, INDIRECT, INCIDENTAL, SPECIAL, EXEMPLARY, OR CONSEQUENTIAL DAMAGES (INCLUDING, BUT NOT LIMITED TO, PROCUREMENT OF SUBSTITUTE GOODS OR SERVICES; LOSS OF USE, DATA, OR PROFITS; OR BUSINESS INTERRUPTION) HOWEVER CAUSED AND ON ANY THEORY OF LIABILITY, WHETHER IN CONTRACT, STRICT LIABILITY, OR TORT (INCLUDING NEGLIGENCE OR OTHERWISE) ARISING IN ANY WAY OUT OF THE USE OF THIS SOFTWARE, EVEN IF ADVISED OF THE POSSIBILITY OF SUCH DAMAGE.

NetApp reserves the right to change any products described herein at any time, and without notice. NetApp assumes no responsibility or liability arising from the use of products described herein, except as expressly agreed to in writing by NetApp. The use or purchase of this product does not convey a license under any patent rights, trademark rights, or any other intellectual property rights of NetApp.

The product described in this manual may be protected by one or more U.S. patents, foreign patents, or pending applications.

RESTRICTED RIGHTS LEGEND: Use, duplication, or disclosure by the government is subject to restrictions as set forth in subparagraph (c)(1)(ii) of the Rights in Technical Data and Computer Software clause at DFARS 252.277-7103 (October 1988) and FAR 52-227-19 (June 1987).

Trademark Information

NETAPP, the NETAPP logo, and the marks listed at <http://www.netapp.com/TM> are trademarks of NetApp, Inc. Other company and product names may be trademarks of their respective owners.