



Choosing the correct installation procedure for your configuration

ONTAP MetroCluster

aherbin, Megan Bock, netapp-ivanad, ntap-bmegan
April 12, 2021

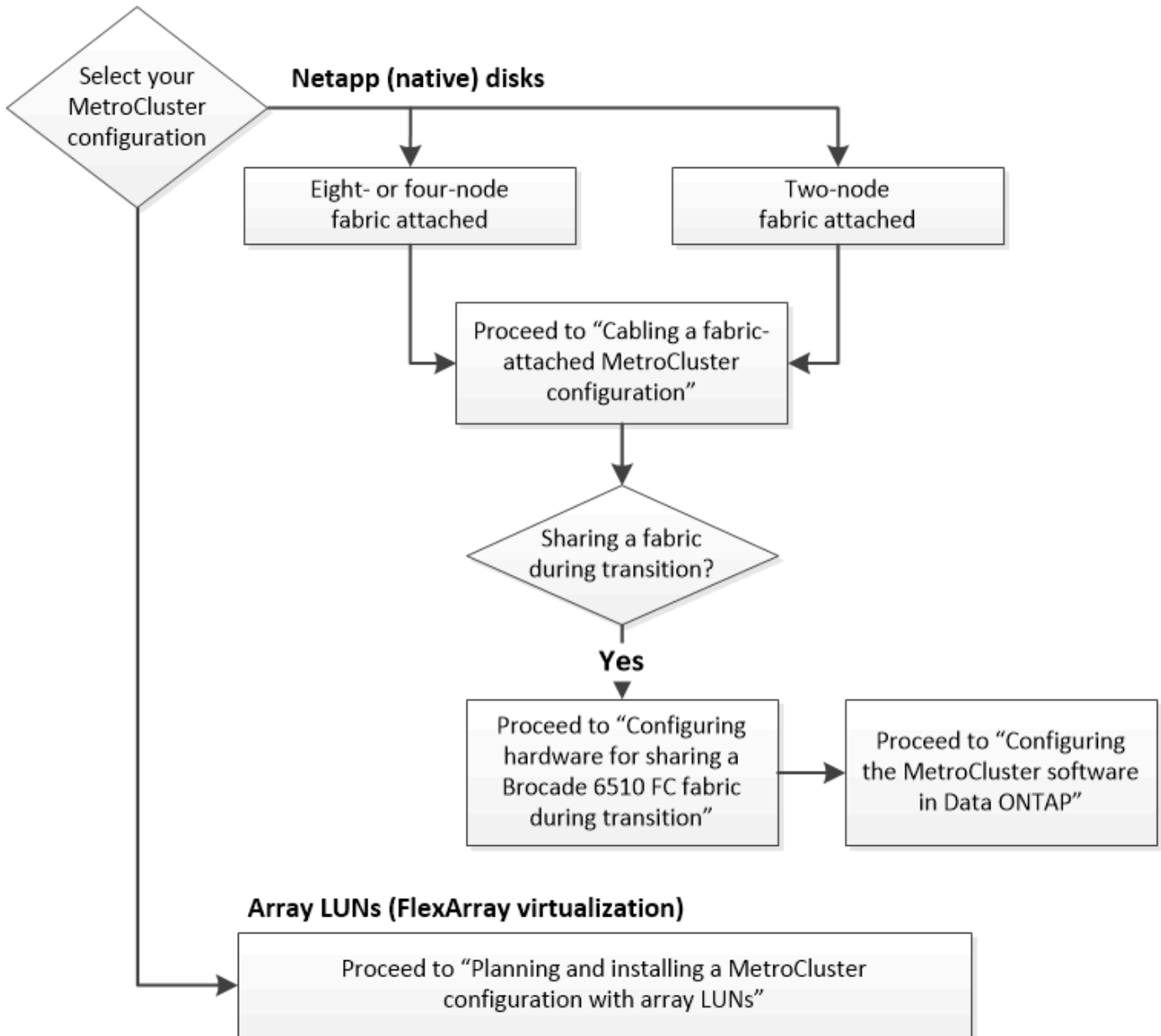
This PDF was generated from https://docs.netapp.com/us-en/ontap-metrocluster/install-fc/concept_choosing_the_correct_installation_procedure_for_your_configuration_mcc_install.html on June 21, 2021. Always check docs.netapp.com for the latest.

Table of Contents

Choosing the correct installation procedure for your configuration 1

Choosing the correct installation procedure for your configuration

You must choose the correct installation procedure based on whether you are using FlexArray LUNs, the number of nodes in the MetroCluster configuration, and whether you are sharing an existing FC switch fabric used by a 7-Mode fabric MetroCluster.



For this installation type...	Use these procedures...
Fabric-attached configuration with NetApp (native) disks	1. Cabling a fabric-attached MetroCluster configuration 2. Configuring the MetroCluster software in ONTAP

For this installation type...	Use these procedures...
<p data-bbox="126 149 808 226">Fabric-attached configuration when sharing with an existing FC switch fabric</p> <p data-bbox="126 254 808 359">This is supported only as a temporary configuration with a 7-Mode fabric MetroCluster configuration using Brocade 6510 switches.</p>	<ol data-bbox="813 149 1498 394" style="list-style-type: none"><li data-bbox="813 149 1498 226">1. Cabling a fabric-attached MetroCluster configuration<li data-bbox="813 233 1498 338">2. Configuring the MetroCluster hardware for sharing a 7-Mode Brocade 6510 FC fabric during transition<li data-bbox="813 344 1498 394">3. Configuring the MetroCluster software in ONTAP

Copyright Information

Copyright © 2021 NetApp, Inc. All rights reserved. Printed in the U.S. No part of this document covered by copyright may be reproduced in any form or by any means-graphic, electronic, or mechanical, including photocopying, recording, taping, or storage in an electronic retrieval system- without prior written permission of the copyright owner.

Software derived from copyrighted NetApp material is subject to the following license and disclaimer:

THIS SOFTWARE IS PROVIDED BY NETAPP "AS IS" AND WITHOUT ANY EXPRESS OR IMPLIED WARRANTIES, INCLUDING, BUT NOT LIMITED TO, THE IMPLIED WARRANTIES OF MERCHANTABILITY AND FITNESS FOR A PARTICULAR PURPOSE, WHICH ARE HEREBY DISCLAIMED. IN NO EVENT SHALL NETAPP BE LIABLE FOR ANY DIRECT, INDIRECT, INCIDENTAL, SPECIAL, EXEMPLARY, OR CONSEQUENTIAL DAMAGES (INCLUDING, BUT NOT LIMITED TO, PROCUREMENT OF SUBSTITUTE GOODS OR SERVICES; LOSS OF USE, DATA, OR PROFITS; OR BUSINESS INTERRUPTION) HOWEVER CAUSED AND ON ANY THEORY OF LIABILITY, WHETHER IN CONTRACT, STRICT LIABILITY, OR TORT (INCLUDING NEGLIGENCE OR OTHERWISE) ARISING IN ANY WAY OUT OF THE USE OF THIS SOFTWARE, EVEN IF ADVISED OF THE POSSIBILITY OF SUCH DAMAGE.

NetApp reserves the right to change any products described herein at any time, and without notice. NetApp assumes no responsibility or liability arising from the use of products described herein, except as expressly agreed to in writing by NetApp. The use or purchase of this product does not convey a license under any patent rights, trademark rights, or any other intellectual property rights of NetApp.

The product described in this manual may be protected by one or more U.S. patents, foreign patents, or pending applications.

RESTRICTED RIGHTS LEGEND: Use, duplication, or disclosure by the government is subject to restrictions as set forth in subparagraph (c)(1)(ii) of the Rights in Technical Data and Computer Software clause at DFARS 252.277-7103 (October 1988) and FAR 52-227-19 (June 1987).

Trademark Information

NETAPP, the NETAPP logo, and the marks listed at <http://www.netapp.com/TM> are trademarks of NetApp, Inc. Other company and product names may be trademarks of their respective owners.