



Expanding a two-node MetroCluster FC configuration to a four-node configuration

ONTAP MetroCluster

netapp-ivanad, netapp-martyh, ntap-bmegan
April 19, 2021

Table of Contents

Expanding a two-node MetroCluster FC configuration to a four-node configuration 1

Expanding a two-node MetroCluster FC configuration to a four-node configuration

Expanding a two-node MetroCluster FC configuration to a four-node MetroCluster FC configuration involves adding a controller to each cluster to form an HA pair at each MetroCluster site, and then refreshing the MetroCluster FC configuration.

- The nodes must be running ONTAP 9 or later in a MetroCluster FC configuration.

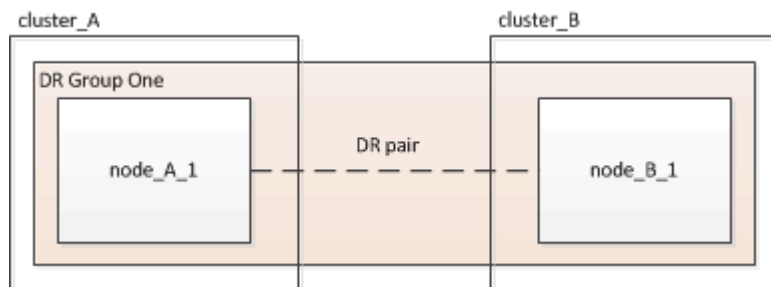
This procedure is not supported on earlier versions of ONTAP or in MetroCluster IP configurations.

- If the platforms in your two-node configuration are not supported in ONTAP 9.2 and you plan to upgrade to platforms supported in ONTAP 9.2 *and* expand to a four-node cluster, you must upgrade the platforms in the two-node configuration *before* expanding the MetroCluster FC configuration.
- The existing MetroCluster FC configuration must be healthy.
- The equipment you are adding must be supported and meet all of the requirements described in the *Fabric-attached MetroCluster Installation and Configuration Guide* or the *Stretch Installation and Configuration Guide*.

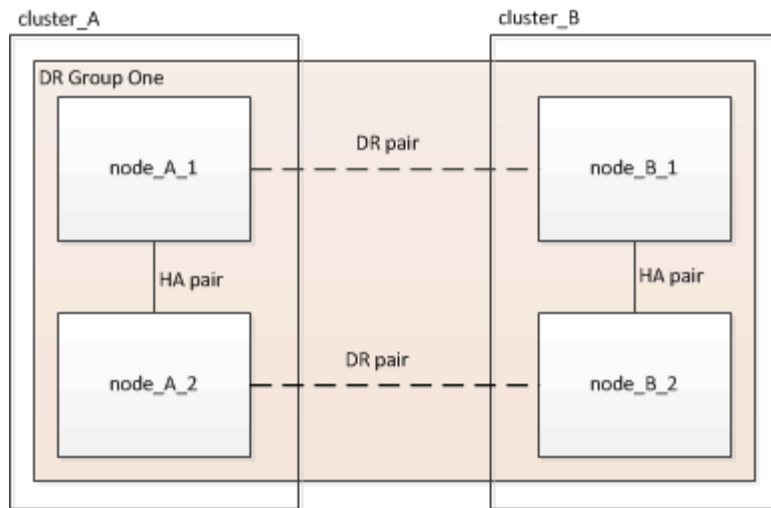
[Fabric-attached MetroCluster installation and configuration](#)

[Stretch MetroCluster installation and configuration](#)

- You must have available FC switch ports to accommodate the new controllers and any new bridges.
- You need the admin password and access to an FTP or SCP server.
- This procedure applies only to MetroCluster FC configurations.
- This procedure is disruptive and takes approximately four hours to complete.
- Before performing this procedure, the MetroCluster FC configuration consists of two single-node clusters:



After completing this procedure, the MetroCluster FC configuration consists of two HA pairs, one at each site:



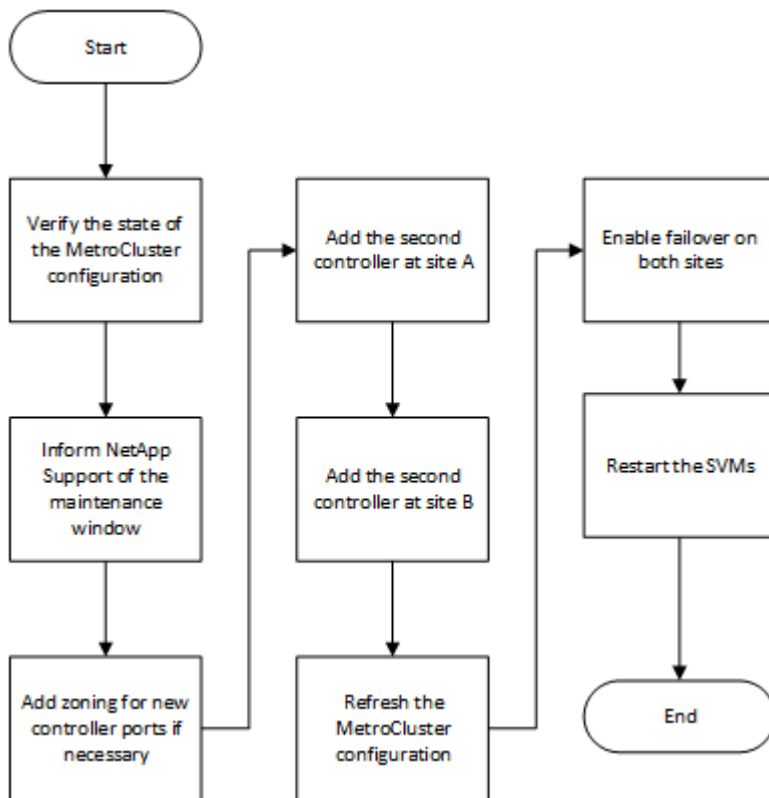
- Both sites must be expanded equally.

A MetroCluster configuration cannot consist of an uneven number of nodes.

- This procedure can take over an hour per site, with additional time for tasks such as initializing the disks and netbooting the new nodes.

The time to initialize the disks depends on the size of the disks.

- This procedure uses the following workflow:



Copyright Information

Copyright © 2021 NetApp, Inc. All rights reserved. Printed in the U.S. No part of this document covered by copyright may be reproduced in any form or by any means-graphic, electronic, or mechanical, including photocopying, recording, taping, or storage in an electronic retrieval system- without prior written permission of the copyright owner.

Software derived from copyrighted NetApp material is subject to the following license and disclaimer:

THIS SOFTWARE IS PROVIDED BY NETAPP "AS IS" AND WITHOUT ANY EXPRESS OR IMPLIED WARRANTIES, INCLUDING, BUT NOT LIMITED TO, THE IMPLIED WARRANTIES OF MERCHANTABILITY AND FITNESS FOR A PARTICULAR PURPOSE, WHICH ARE HEREBY DISCLAIMED. IN NO EVENT SHALL NETAPP BE LIABLE FOR ANY DIRECT, INDIRECT, INCIDENTAL, SPECIAL, EXEMPLARY, OR CONSEQUENTIAL DAMAGES (INCLUDING, BUT NOT LIMITED TO, PROCUREMENT OF SUBSTITUTE GOODS OR SERVICES; LOSS OF USE, DATA, OR PROFITS; OR BUSINESS INTERRUPTION) HOWEVER CAUSED AND ON ANY THEORY OF LIABILITY, WHETHER IN CONTRACT, STRICT LIABILITY, OR TORT (INCLUDING NEGLIGENCE OR OTHERWISE) ARISING IN ANY WAY OUT OF THE USE OF THIS SOFTWARE, EVEN IF ADVISED OF THE POSSIBILITY OF SUCH DAMAGE.

NetApp reserves the right to change any products described herein at any time, and without notice. NetApp assumes no responsibility or liability arising from the use of products described herein, except as expressly agreed to in writing by NetApp. The use or purchase of this product does not convey a license under any patent rights, trademark rights, or any other intellectual property rights of NetApp.

The product described in this manual may be protected by one or more U.S. patents, foreign patents, or pending applications.

RESTRICTED RIGHTS LEGEND: Use, duplication, or disclosure by the government is subject to restrictions as set forth in subparagraph (c)(1)(ii) of the Rights in Technical Data and Computer Software clause at DFARS 252.277-7103 (October 1988) and FAR 52-227-19 (June 1987).

Trademark Information

NETAPP, the NETAPP logo, and the marks listed at <http://www.netapp.com/TM> are trademarks of NetApp, Inc. Other company and product names may be trademarks of their respective owners.