



## **Purchase a license**

### **ONTAP Select**

NetApp  
May 07, 2026

# Table of Contents

- Purchase a license ..... 1
  - Workflow when purchasing an ONTAP Select license ..... 1
- Capacity Tiers ..... 3
  - Considerations for sizing an ONTAP Select Capacity Tiers license ..... 3
  - Acquire an ONTAP Select Capacity Tier license ..... 4
- Capacity Pools ..... 5
  - Considerations for sizing an ONTAP Select Capacity Pools license ..... 5
  - Acquire an ONTAP Select Capacity Pool license ..... 5

# Purchase a license

## Workflow when purchasing an ONTAP Select license

The following workflow illustrates the process of purchasing and applying a license for your ONTAP Select deployment. When purchasing a license, you must select the licensing model and storage capacity.

The exact process varies based on whether you are using a Capacity Tier or Capacity Pool license:

### **Nine-digit license serial number**

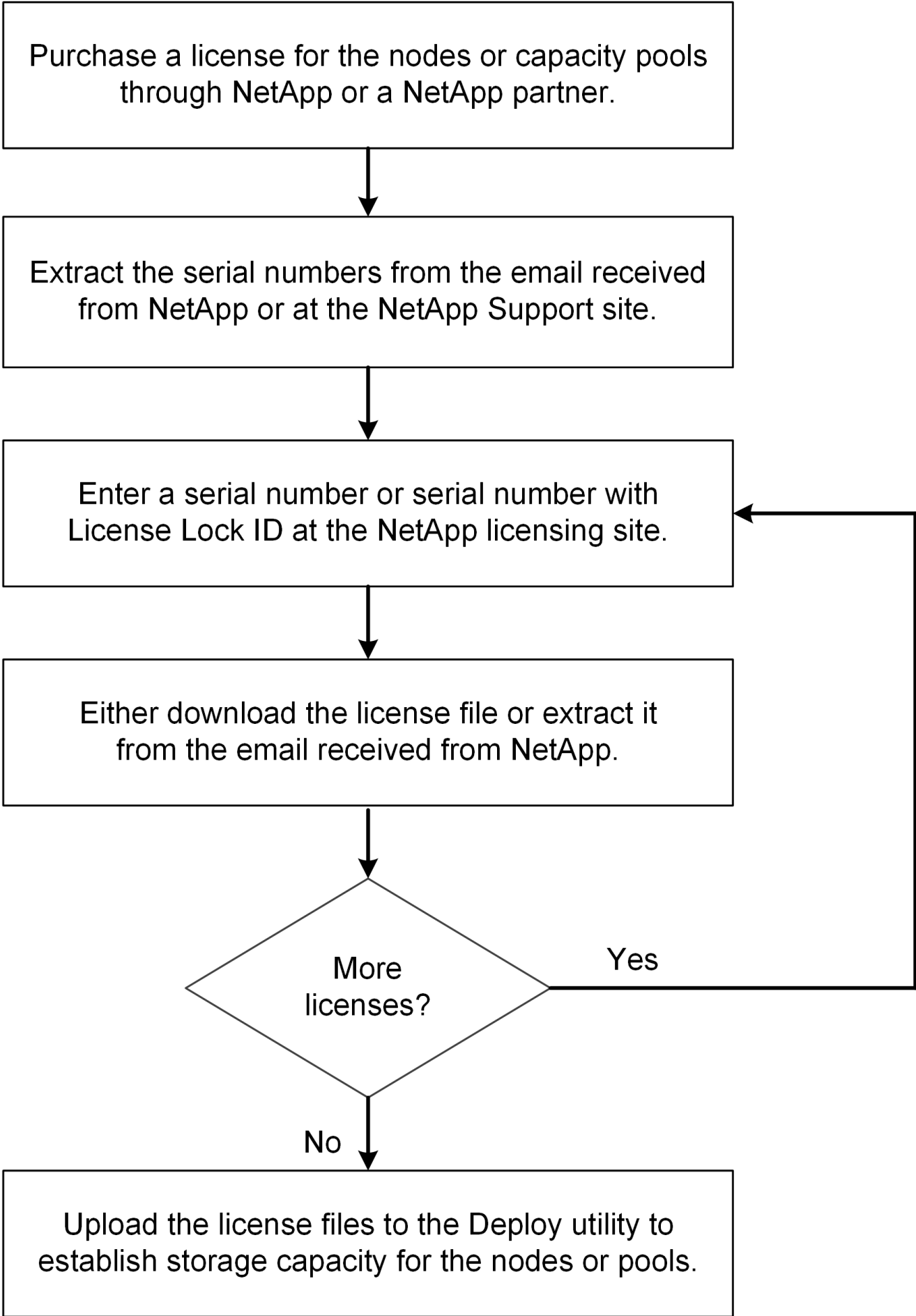
Serial number applies to either a node (Capacity Tiers) or a storage pool (Capacity Pools)

### **License Lock ID**

You must have the License Lock ID for your Deploy instance when using a Capacity Pool license

### **Licensing web site**

You obtain a Capacity Tier and Capacity Pool license at different web sites



## What's next?

Learn about the considerations for sizing an ONTAP Select license:

- [Capacity Tiers license](#)
- [Capacity Pools license](#)

## Related information

[Learn about managing ONTAP Select licenses](#)

# Capacity Tiers

## Considerations for sizing an ONTAP Select Capacity Tiers license

The Capacity Tiers license is based on the underlying disk capacity managed by each ONTAP Select node and not the usable capacity of the node, HA-pair, or cluster. Each Capacity Tiers license is assigned to an individual node serial number for a specified capacity and requires an accompanying support contract.

The licensed capacity for a Capacity Tiers license is in full TB amounts, with a minimum of 1 TB. You calculate the licensed capacity by multiplying the amount of usable space by the overhead factor. The overhead factor differs between a single-node and multi-node (HA-pair based) clusters:

- Overhead factor for single-node clusters is 1.13
- Overhead factor for multi-node clusters is 2.67

Calculate the licensed capacity based on the usable space to ensure you have enough for your deployment.

Description	Single node	HA pair
Usable space	10 TB	5 TB per node 10 TB for HA pair
Licensed space	12 TB  ( $10 \times 1.13 = 11.3$ , round up to next full TB)	Two 14 TB licenses  ( $5 \times 2.67 = 13.35$ , round up to next full TB)

Description	Single node	HA pair
Maximum usable space per node  <b>Note:</b> The maximum managed space per node or HA pair is 400 TB	353 TB  (400 / 1.13)	Per node in a HA pair: <ul style="list-style-type: none"> <li>• 149 TB (400 / 2.67)</li> </ul> Per HA pair in a multi-node cluster: <ul style="list-style-type: none"> <li>• Two-node: 298 TB (2 x 149)</li> <li>• Four-node: 596 TB (4 x 149)</li> <li>• Six-node: 894 TB (6 x 149)</li> <li>• Eight-node: 1,192 TB (8 x 149)</li> <li>• Ten-node: 1,490 TB (10 x 149)</li> <li>• Twelve-node: 1,788 TB (12 x 149)</li> </ul>

**What's next**

[Acquire a Capacity Tier license for ONTAP Select](#)

**Acquire an ONTAP Select Capacity Tier license**

When using Capacity Tiers licensing, you need to acquire a license file for each ONTAP Select node. The license file defines the storage capacity for the node and is locked to the node through the unique nine-digit serial number assigned by NetApp.

**Before you begin**

- You must have the nine-digit license serial number assigned to the ONTAP Select node by NetApp.
- You should wait at least 24 hours after the shipped date of your purchase order before acquiring a license file.
- You have reviewed the [considerations for sizing a Capacity Tiers license](#).

**About this task**

You must perform this task for each ONTAP Select node requiring a Capacity Tiers license.

**Steps**

1. [Access the ONTAP Select license site](#).
2. Sign in using your NetApp account credentials.
3. On the **License Generator** page, select the desired license offering from the dropdown box.
4. Fill in the remaining fields on the **License Generator** page, including the **Product Serial #**.

The "product serial #" is the serial number for the ONTAP Select node.

5. Select **Submit**.
6. After the request has been validated, select the delivery method for the license.

You can select either **Download License** or **Email License**.

7. Confirm that you received the license file based on your selected delivery method.

## After you finish

You must upload the license file to the Deploy administration utility before it can be applied to an ONTAP Select node.

# Capacity Pools

## Considerations for sizing an ONTAP Select Capacity Pools license

The licensed capacity for a Capacity Pool license is in full TB amounts, with a minimum of 2 TB. You calculate the licensed capacity by multiplying the amount of usable space by the overhead factor. The overhead factor differs between a single-node and multi-node (HA-pair based) clusters:

- Overhead factor for single-node clusters is 1.13
- Overhead factor for multi-node clusters is 2.67

You need to calculate the licensed capacity based on the usable space to ensure you have enough for your deployment.

Description	Single-node	HA pair or mix of HA pair and single-node
Usable space	20 TB	10 TB per single-node cluster 20 TB for HA pair
Licensed space	23 TB  ( $20 \times 1.13 = 22.6$ , round up to next full TB)	54 TB  ( $20 \times 2.67 = 53.4$ , round up to next full TB)
Maximum usable space per node  <b>Note:</b> The maximum managed space per node or HA pair is 400 TB	353 TB  ( $400 / 1.13$ )	Per single-node in a cluster:  149 TB ( $400 / 2.67$ )  Per HA pair in a cluster:  298 TB ( $2 \times 149$ )

## What's next

[Acquire a Capacity Pools license for ONTAP Select](#)

## Acquire an ONTAP Select Capacity Pool license

You must acquire a license file for each Capacity Pool used by the ONTAP Select nodes. The license file defines the storage capacity and expiration for the pool. It is locked to the License Manager through a combination of the unique license serial number assigned by NetApp and the License Lock ID associated with the Deploy instance.

## Before you begin

- You must have the nine-digit license serial number assigned to the Capacity Pool by NetApp.

- You should wait at least 24 hours after the shipped date of your purchase order before acquiring a license file.
- You have reviewed the [considerations for sizing a Capacity Pools license](#).

### **About this task**

You must perform this task for each Capacity Pool used by the ONTAP Select nodes.

### **Steps**

1. Log in to the [NetApp Support site](#).
2. Select **Systems > Software Licenses**.
3. Type the license serial number for the Capacity Pool and select **Go!**.
4. On the license details page, navigate to the **Product Details** column.
5. Select **Get NetApp License File** on the appropriate row.
6. Type the License Lock ID for your ONTAP Select Deploy instance and select **Submit**.
7. Select the appropriate delivery method and select **Submit**.
8. Select **OK** on the delivery confirmation window.

### **After you finish**

You must upload the license file to the Deploy administration utility before an ONTAP Select node can use the Capacity Pool.

## Copyright information

Copyright © 2026 NetApp, Inc. All Rights Reserved. Printed in the U.S. No part of this document covered by copyright may be reproduced in any form or by any means—graphic, electronic, or mechanical, including photocopying, recording, taping, or storage in an electronic retrieval system—without prior written permission of the copyright owner.

Software derived from copyrighted NetApp material is subject to the following license and disclaimer:

THIS SOFTWARE IS PROVIDED BY NETAPP "AS IS" AND WITHOUT ANY EXPRESS OR IMPLIED WARRANTIES, INCLUDING, BUT NOT LIMITED TO, THE IMPLIED WARRANTIES OF MERCHANTABILITY AND FITNESS FOR A PARTICULAR PURPOSE, WHICH ARE HEREBY DISCLAIMED. IN NO EVENT SHALL NETAPP BE LIABLE FOR ANY DIRECT, INDIRECT, INCIDENTAL, SPECIAL, EXEMPLARY, OR CONSEQUENTIAL DAMAGES (INCLUDING, BUT NOT LIMITED TO, PROCUREMENT OF SUBSTITUTE GOODS OR SERVICES; LOSS OF USE, DATA, OR PROFITS; OR BUSINESS INTERRUPTION) HOWEVER CAUSED AND ON ANY THEORY OF LIABILITY, WHETHER IN CONTRACT, STRICT LIABILITY, OR TORT (INCLUDING NEGLIGENCE OR OTHERWISE) ARISING IN ANY WAY OUT OF THE USE OF THIS SOFTWARE, EVEN IF ADVISED OF THE POSSIBILITY OF SUCH DAMAGE.

NetApp reserves the right to change any products described herein at any time, and without notice. NetApp assumes no responsibility or liability arising from the use of products described herein, except as expressly agreed to in writing by NetApp. The use or purchase of this product does not convey a license under any patent rights, trademark rights, or any other intellectual property rights of NetApp.

The product described in this manual may be protected by one or more U.S. patents, foreign patents, or pending applications.

LIMITED RIGHTS LEGEND: Use, duplication, or disclosure by the government is subject to restrictions as set forth in subparagraph (b)(3) of the Rights in Technical Data -Noncommercial Items at DFARS 252.227-7013 (FEB 2014) and FAR 52.227-19 (DEC 2007).

Data contained herein pertains to a commercial product and/or commercial service (as defined in FAR 2.101) and is proprietary to NetApp, Inc. All NetApp technical data and computer software provided under this Agreement is commercial in nature and developed solely at private expense. The U.S. Government has a non-exclusive, non-transferrable, nonsublicensable, worldwide, limited irrevocable license to use the Data only in connection with and in support of the U.S. Government contract under which the Data was delivered. Except as provided herein, the Data may not be used, disclosed, reproduced, modified, performed, or displayed without the prior written approval of NetApp, Inc. United States Government license rights for the Department of Defense are limited to those rights identified in DFARS clause 252.227-7015(b) (FEB 2014).

## Trademark information

NETAPP, the NETAPP logo, and the marks listed at <http://www.netapp.com/TM> are trademarks of NetApp, Inc. Other company and product names may be trademarks of their respective owners.