



Set up the cluster by using ONTAP System Manager

System Manager Classic

NetApp

January 21, 2022

Table of Contents

- Setting up the cluster by using ONTAP System Manager 1
- Setting up a cluster by using the template file 2
- Setting up the cluster manually 4

Setting up the cluster by using ONTAP System Manager

Beginning with ONTAP 9.1, you can use ONTAP System Manager to set up a cluster by creating a cluster, setting up the node management network and cluster management network, and then setting up event notifications.

Before you begin

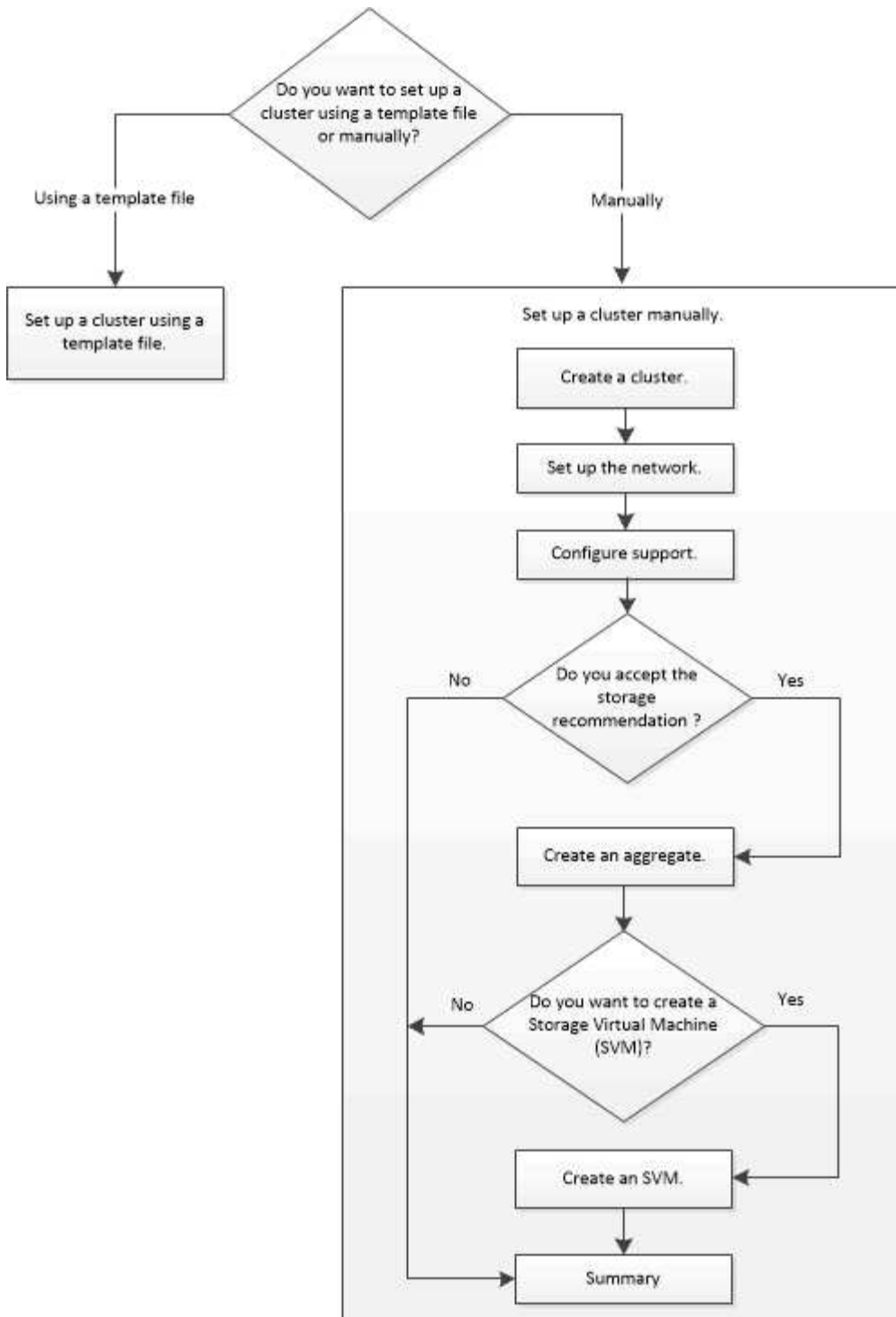
- You must have configured the node management IP addresses for at least one node.
- Nodes must be in the default mode of HA.
- Nodes must be running ONTAP 9.1 or later.
- Nodes must be of the same version.
- All of the nodes must be healthy, and cabling for the nodes must be set up.
- Cabling and connectivity must be in place for your cluster configuration.
- You must have sufficient cluster management, node management, Service Processor IP addresses, and gateway and netmask details.
- If the cluster interface is present on a port, then that port must be present in the cluster IPspace.

About this task

To create a cluster, you have to log in through the console, and configure the node management IP address on any node in the cluster network. After you have configured the node management IP address on a node, you can add other nodes and create a cluster by using ONTAP System Manager.

The cluster setup operation is not supported on MetroCluster configurations for ONTAP software.

You can set up the cluster by using a template file or by manually entering the values in the cluster setup wizard.



Setting up a cluster by using the template file

You can use the template file that is provided in System Manager to set up a cluster by creating a cluster, setting up the node management and cluster management networks, and then setting up event notifications. (Starting with ONTAP System Manager 9.6, AutoSupport is not supported.) You can download the template file in `.xlsx` format or `.csv` format.

About this task

- If the cluster supports ONTAP 9.1 or later, you can add only storage systems that are running ONTAP 9.1 or later.
- All fields are not automatically populated when you upload the file.

You must manually enter the value of some fields such as password and cluster management port.

Steps

1. Open the web browser, and then enter the node management IP address that you have configured:
`https://node-management-IP`
 - If you have set up the credentials for the cluster, the Login page is displayed.

You must enter the credentials to log in.

- If you have not set up the credentials for the cluster, the Guided Setup window is displayed.
2. Download the `.xlsx` template file or the `.csv` template file.
 3. Provide all the required values in the template file, and save the file.



- Do not edit any other column in the template other than Value.
- Do not change the version of the template file.

4. Click **Browse**, and select the updated template file.
 - You can upload the template file only in the `.csv` format. If you have downloaded the template file in `.xlsx` format, you must save the file as a `.csv` file, and then upload the file.
 - You must ensure that the encoding used for this file is UTF8. If not, the values will not be read.
5. Click **Upload**.

The details that you have provided in the template file are used to complete the cluster setup process.

6. Click the **Guided Setup** icon to view the details for the cluster.
7. Verify the details in the **Cluster** window, and then click **Submit and Continue**.

You can edit the cluster details, if required.

If you log in to the Cluster window for the second time, the **Feature Licenses** field is enabled by default. You can add new feature license keys or retain the pre-populated license keys.

8. Verify the details in the **Network** window, and then click **Submit and Continue**.

You can edit the network details, if required.

9. Verify the details in the **Support** window, and then click **Submit and Continue**.

You can edit the support details, if required.

10. Verify the details in the **Storage** window, and then create aggregates or exit the cluster setup:

If you want to...	Then...
Exit cluster setup without provisioning storage and creating an SVM	Click Skip this step .
Provision storage using aggregates and create an SVM	Click Submit and Continue .

You can edit the support details, if required.

11. Verify the details in the **Create Storage Virtual Machine (SVM)** window, and then click **Submit and Continue**.

You can edit the SVM name, select a different data protocol, and modify the Network Interface and Adapter Details, if required.

12. If you have clicked **Skip this step** on the **Storage** window, view the details on the **Summary** window, and then click **Manage your Cluster** to launch System Manager.
13. If you have clicked **Submit and Continue** on the **Storage** window, verify the details in the SVM window, and then click **Submit and Continue**.

You can edit the SVM details, if required.

14. Verify all the details in the **Summary** window, and then click **Provision an Application** to provision storage for applications, or click **Manage your Cluster** to complete the cluster setup process and launch System Manager, or click **Export Configuration** to download the configuration file.

Related information

[System Manager Cluster Guided Setup Templates](#)

Setting up the cluster manually

You can use System Manager to manually setup the cluster by creating a cluster, setting up the node management and cluster management networks, and setting up event notifications.

Create a cluster

You can use ONTAP System Manager to create and set up a cluster in your data center.

About this task

If the cluster supports ONTAP 9.1 or later, you can add only those storage systems that are running ONTAP 9.1 or later.

Steps

1. Open the web browser, and then enter the node management IP address that you have configured:
`https://node-management-IP`
 - If you have set up the credentials for the cluster, the Login page is displayed.

You must enter the credentials to log in.

- If you have not set up the credentials for the cluster, the Guided Setup window is displayed.

Click the **Guided Setup** icon to set up a cluster.

2. In the **Cluster** page, enter a name for the cluster.



If all the nodes are not discovered, click **Refresh**.

The nodes in that cluster network are displayed in the Nodes field.

3. If desired, update the node names in the **Nodes** field.
4. Enter the password for the cluster.
5. Enter the feature license keys.
6. Click **Submit**.

What to do next

Enter the network details in the Network page to continue with the cluster setup.

Related information

[Licenses window](#)

[Configuration Updates window](#)

Setting up a network

By setting up a network, you can manage your cluster, nodes, and Service Processors. You can also set up DNS and NTP details by using the network window.

Before you begin

You must have set up the cluster.

About this task

- Only those nodes that are up and running are listed for cluster creation.

You can create LIFs for those nodes.

- You can disable IP address range and enter individual IP addresses for cluster management, node management, and Service Processor management networks.

Setting up a network when an IP address range is enabled

You can set up a network by enabling an IP address range. The IP address range enables you to enter IP addresses that are in the same netmask range or in the different netmask range.

Steps

1. Enter a range of IP addresses in the **IP Address Range** field, and then click **Apply**.

Option	Description
You have a range of IP addresses in the same netmask	Enter the IP address range, and then click Apply . IP addresses are applied to cluster management, node management, and Service Processor management networks sequentially.
You have a range of IP addresses in different netmasks	Enter each IP address range on a separate line, and then click Apply . The first IP address applied to cluster management and other IP addresses are applied to node management and Service Processor management networks sequentially.



After entering the IP address range for cluster management, node management, and Service Processor management, you must not manually modify the IP address values in these fields. You must ensure that all the IP addresses are IPv4 addresses.

2. Enter the netmask and gateway details.
3. Select the port for cluster management in the **Port** field.
4. If the **Port** field in the node management is not populated with **e0M**, enter the port details.



By default, the Port field displays e0M.

5. For Service Processor management, if you are overriding the default values, ensure that you have entered the mandatory gateway details.
6. If you have enabled the **DNS Details** field, enter the DNS server details.
7. If you have enabled the **NTP Details** field, enter the NTP server details.



Providing alternative NTP server details is optional.

8. Click **Submit**.

What to do next

Enter event notifications in the Support page to continue with the cluster setup.

Related information

[What is a Service Processor and how do I use it?](#)

[How to configure and troubleshoot NTP on clustered Data ONTAP 8.2 and later using CLI](#)

[ONTAP 9 Documentation Center](#)

Setting up a network when an IP address range is disabled

You can set up a network by disabling an IP address range and entering individual IP addresses for cluster management, node management, and service provider networks.

About this task

In the Networks page, if the **IP Address Range** is disabled, enter individual IP addresses for cluster management, node management, and service processor networks.

Steps

1. Enter the cluster management IP address in the **Cluster Management IP Address** field.
2. Enter the netmask details for cluster management.
3. Enter the gateway details for cluster management.
4. Select the port for cluster management in the **Port** field.
5. If you want to provide netmask and gateway details to manage your nodes, clear the **Retain Netmask and Gateway configuration of the Cluster Management** check box, and then enter the netmask and gateway details.
6. Enter the node management IP addresses in the **Node Management** field.
7. If the **Port** field in the node management is not populated with **e0M**, enter the port details.



By default, the Port field displays e0M.

8. Enter the Service Processor management netmask and gateway details.
9. Enter the Service Processor IP management addresses in the **Service Processor Management** field.
10. If you have enabled the **DNS Details** field, enter the DNS server details.
11. If you have enabled the **NTP Details** field, enter the NTP server details.



Providing alternative NTP server details is optional.

12. Click **Submit**.

What to do next

Enter event notifications in the Support page to continue with the cluster setup.

Related information

[What is a Service Processor and how do I use it?](#)

[How to configure and troubleshoot NTP on clustered Data ONTAP 8.2 and later using CLI](#)

[ONTAP 9 Documentation Center](#)

[Network window](#)

[Configuration Updates window](#)

[Date and Time window](#)

[Service Processors window](#)

Setting up a support page

Setting up the support page completes the cluster setup, and involves setting up event notifications, and for single-node clusters, configuring system backup.

Before you begin

You must have set up the cluster and network.

Steps

1. Set up the event notifications by using the mailhost, or SNMP trap host, or Syslog server.



You must set up at least one event notification system.

2. If you have a single-node cluster, configure a system backup on an FTP server or on an HTTP server.



System backup is applicable only for single-node clusters.

3. Click **Submit and continue**.

What to do next

View the storage recommendations and create SVMs to continue with the cluster setup.

Reviewing storage recommendations

Using the Storage window, you can review the storage recommendations that are provided for creating aggregates.

Before you begin

You must have set up the cluster, network, and the support details.

About this task

You can create data aggregates per the storage recommendations or you can skip this step and create data aggregates at a later time using System Manager.

Procedure

- To create data aggregates as per the storage recommendations, click **Submit and Continue**.
- To create data aggregates at a later time using System Manager, click **Skip this step**.

What to do next

If you opted to create aggregates per the storage recommendations, you must create a storage virtual machine (SVM) to continue with the cluster setup.

Create an SVM

You can use the Storage Virtual Machine (SVM) window to create fully configured SVMs. The SVMs serve data after storage objects are created on these SVMs.



Before you begin

- You must have created an aggregate and the aggregate must be online.
- You must have ensured that the aggregate has sufficient space for the SVM root volume.

Steps

1. Enter a name for the SVM.
2. Select data protocols for the SVM:

If you want to...	Then...
Enable CIFS protocol by configuring the CIFS server using an Active Directory	<ol style="list-style-type: none"> a. Select the Active Directory box. b. Enter the Active Directory administrator name. c. Enter the Active Directory administrator password. d. Enter a name for the CIFS server. e. Enter a name for the Active Directory domain. f. Depending on your requirements, select the One data LIF on this SVM or One data LIF per node on this SVM box. g. Provide data LIF details such as IP address, netmask, gateway, and port. h. Provide DNS details.
Enable CIFS protocol by configuring the CIFS server using a workgroup	<ol style="list-style-type: none"> a. Select the Workgroup box. b. Enter a name for the workgroup. c. Enter a name for the CIFS server. d. Depending on your requirements, select the One data LIF on this SVM or One data LIF per node on this SVM check box. e. Provide data LIF details such as IP address, netmask, gateway, and port.
Enable NFS protocol	<ol style="list-style-type: none"> a. Select the NFS box. b. Depending on your requirements, select the One data LIF on this SVM or One data LIF per node on this SVM check box. c. Provide data LIF details such as IP address, netmask, gateway, and port.
Enable iSCSI protocol	<ol style="list-style-type: none"> a. Select the iSCSI box. b. Provide data LIF details such as IP address, netmask, gateway, and port.

If you want to...	Then...
Enable FC/FCoE protocol	<p>a. Select the FC/FCoE box.</p> <p>b. Select the FC/FCoE ports for FC or FCoE protocols.</p> <div style="border-left: 1px solid #ccc; padding-left: 10px; margin-top: 10px;">  Each node must have at least one correctly configured port for each protocol (FC and FCoE). </div>
Enable NVMe protocol	<p>a. Select the NVMe box.</p> <p>b. Select the NVMe ports for NVMe protocols.</p> <div style="border-left: 1px solid #ccc; padding-left: 10px; margin-top: 10px;">  At least one NVMe capable adapter must be available in one of the nodes to configure NVMe. Also, starting with ONTAP 9.5, at least one NVMe LIF must be configured for each node of a HA pair associated with the SVM. You can create a maximum of two NVMe LIFs for each node in the pair. </div> <p style="text-align: right; margin-top: 10px;">+</p>

3. Click the **Advanced Options** icon and provide details to configure advanced options such as the default language, security style, CIFS server details, and NFS details.
4. Click **Submit and Continue** to create the SVM.

What to do next

If you have clicked **Submit and Continue**, you must verify the details that you have provided in the Summary window, and then click **Manage your Cluster** to launch System Manager, or click **Provision an Application** to provision storage applications, or click **Export Configuration** to download the configuration file.

Copyright Information

Copyright © 2022 NetApp, Inc. All rights reserved. Printed in the U.S. No part of this document covered by copyright may be reproduced in any form or by any means-graphic, electronic, or mechanical, including photocopying, recording, taping, or storage in an electronic retrieval system- without prior written permission of the copyright owner.

Software derived from copyrighted NetApp material is subject to the following license and disclaimer:

THIS SOFTWARE IS PROVIDED BY NETAPP "AS IS" AND WITHOUT ANY EXPRESS OR IMPLIED WARRANTIES, INCLUDING, BUT NOT LIMITED TO, THE IMPLIED WARRANTIES OF MERCHANTABILITY AND FITNESS FOR A PARTICULAR PURPOSE, WHICH ARE HEREBY DISCLAIMED. IN NO EVENT SHALL NETAPP BE LIABLE FOR ANY DIRECT, INDIRECT, INCIDENTAL, SPECIAL, EXEMPLARY, OR CONSEQUENTIAL DAMAGES (INCLUDING, BUT NOT LIMITED TO, PROCUREMENT OF SUBSTITUTE GOODS OR SERVICES; LOSS OF USE, DATA, OR PROFITS; OR BUSINESS INTERRUPTION) HOWEVER CAUSED AND ON ANY THEORY OF LIABILITY, WHETHER IN CONTRACT, STRICT LIABILITY, OR TORT (INCLUDING NEGLIGENCE OR OTHERWISE) ARISING IN ANY WAY OUT OF THE USE OF THIS SOFTWARE, EVEN IF ADVISED OF THE POSSIBILITY OF SUCH DAMAGE.

NetApp reserves the right to change any products described herein at any time, and without notice. NetApp assumes no responsibility or liability arising from the use of products described herein, except as expressly agreed to in writing by NetApp. The use or purchase of this product does not convey a license under any patent rights, trademark rights, or any other intellectual property rights of NetApp.

The product described in this manual may be protected by one or more U.S. patents, foreign patents, or pending applications.

RESTRICTED RIGHTS LEGEND: Use, duplication, or disclosure by the government is subject to restrictions as set forth in subparagraph (c)(1)(ii) of the Rights in Technical Data and Computer Software clause at DFARS 252.277-7103 (October 1988) and FAR 52-227-19 (June 1987).

Trademark Information

NETAPP, the NETAPP logo, and the marks listed at <http://www.netapp.com/TM> are trademarks of NetApp, Inc. Other company and product names may be trademarks of their respective owners.