



Boot media - manual recovery

Install and maintain

NetApp

February 13, 2026

Table of Contents

- Boot media - manual recovery 1
 - Boot media manual recovery workflow - FAS9500 1
 - Requirements for manual boot media recovery - FAS9500 1
 - Check encryption key support and status - FAS9500 2
 - Step 1: Check NVE support and download the correct ONTAP image 2
 - Step 2: Verify key manager status and back up configuration 3
 - Shut down the controller for manual boot media recovery - FAS9500 5
 - Replace the boot media and prepare for manual boot recovery - FAS9500 6
 - Step 1: Remove the controller module 7
 - Step 2: Replace the boot media 8
 - Step 3: Transfer the boot image to the boot media 9
 - Manual boot media recovery from a USB drive - FAS9500 11
 - Restore encryption - FAS9500 13
 - Return the failed boot media to NetApp - FAS9500 23

Boot media - manual recovery

Boot media manual recovery workflow - FAS9500

Get started with replacing the boot media in your FAS9500 storage system by reviewing the replacement requirements, checking encryption status, shutting down the controller, replacing the boot media, booting the recovery image, restoring encryption, and verifying the system functionality.

If your storage system is running ONTAP 9.17.1 or later, use the [automated boot recovery procedure](#). If your system is running an earlier version of ONTAP, you must use the manual boot recovery procedure.

1

Review the boot media requirements

Review the requirements for replacing the boot media.

2

Check encryption key support and status

Determine whether the system has security key manager enabled or encrypted disks.

3

Shut down the controller

Shut down the controller when when you need to replace the boot media.

4

Replace the boot media

Remove the failed boot media from the System Management module and install the replacement boot media, and then transfer an ONTAP image using a USB flash drive.

5

Boot the recovery image

Boot the ONTAP image from the USB drive, restore the file system, and verify the environmental variables.

6

Restore encryption

Restore the onboard key manager configuration or the external key manager from the ONATP boot menu.

7

Return the failed part to NetApp

Return the failed part to NetApp, as described in the RMA instructions shipped with the kit.

Requirements for manual boot media recovery - FAS9500

Before replacing the boot media in your FAS9500 system, ensure you meet the necessary requirements for a successful replacement. This includes making sure you

have a USB flash drive with the appropriate amount of storage and verifying that you have the correct replacement boot device.

If your storage system is running ONTAP 9.17.1 or later, use the [automated boot recovery procedure](#). If your system is running an earlier version of ONTAP, you must use the manual boot recovery procedure.

USB flash drive

- Ensure you have a USB flash drive formatted to FAT32.
- The USB must have sufficient storage capacity to hold the `image_xxx.tgz` file.

File preparation

Copy the `image_xxx.tgz` file to the USB flash drive. This file will be used when you transfer the ONTAP image using the USB flash drive.

Component replacement

Replace the failed component with the replacement component provided by NetApp.

Controller identification

It is critical to apply the commands to the correct controller when you are replacing the impaired boot media:

- The *impaired controller* is the controller on which you are performing maintenance.
- The *healthy controller* is the HA partner of the impaired controller.

What's next?

After you've reviewed the requirements to replace the boot media, you need to [check encryption key support and status on the boot media](#).

Check encryption key support and status - FAS9500

To ensure data security on your storage system, you need to verify the encryption key support and status on your boot media. Check if your ONTAP version supports NetApp Volume Encryption (NVE), and before you shut down the controller check if the key manager is active.

If your storage system is running ONTAP 9.17.1 or later, use the [automated boot recovery procedure](#). If your system is running an earlier version of ONTAP, you must use the manual boot recovery procedure.

Step 1: Check NVE support and download the correct ONTAP image

Determine whether your ONTAP version supports NetApp Volume Encryption (NVE) so you can download the correct ONTAP image for the boot media replacement.

Steps

1. Check if your ONTAP version supports encryption:

```
version -v
```

If the output includes `1Ono-DARE`, NVE is not supported on your cluster version.

2. Download the appropriate ONTAP image based on NVE support:

- If NVE is supported: Download the ONTAP image with NetApp Volume Encryption
- If NVE is not supported: Download the ONTAP image without NetApp Volume Encryption



Download the ONTAP image from the NetApp Support Site to your HTTP or FTP server or a local folder. You will need this image file during the boot media replacement procedure.

Step 2: Verify key manager status and back up configuration

Before shutting down the impaired controller, verify the key manager configuration and back up the necessary information.

Steps

1. Determine which key manager is enabled on your system:

ONTAP version	Run this command
ONTAP 9.14.1 or later	<pre>security key-manager keystore show</pre> <ul style="list-style-type: none"> • If EKM is enabled, EKM is listed in the command output. • If OKM is enabled, OKM is listed in the command output. • If no key manager is enabled, No key manager keystores configured is listed in the command output.
ONTAP 9.13.1 or earlier	<pre>security key-manager show-key-store</pre> <ul style="list-style-type: none"> • If EKM is enabled, external is listed in the command output. • If OKM is enabled, onboard is listed in the command output. • If no key manager is enabled, No key managers configured is listed in the command output.

2. Depending on whether a key manager is configured on your system, do one of the following:

If no key manager is configured:

You can safely shut down the impaired controller and proceed to the shutdown procedure.

If a key manager is configured (EKM or OKM):

- a. Enter the following query command to display the status of the authentication keys in your key manager:

```
security key-manager key query
```

- b. Review the output and check the value in the `Restored` column. This column indicates whether the authentication keys for your key manager (either EKM or OKM) have been successfully restored.

3. Complete the appropriate procedure based on your key manager type:

External Key Manager (EKM)

Complete these steps based on the value in the `Restored` column.

If all keys show `true` in the `Restored` column:

You can safely shut down the impaired controller and proceed to the shutdown procedure.

If any keys show a value other than `true` in the `Restored` column:

- a. Restore the external key management authentication keys to all nodes in the cluster:

```
security key-manager external restore
```

If the command fails, contact NetApp Support.

- b. Verify that all authentication keys are restored:

```
security key-manager key query
```

Confirm that the `Restored` column displays `true` for all authentication keys.

- c. If all keys are restored, you can safely shut down the impaired controller and proceed to the shutdown procedure.

Onboard Key Manager (OKM)

Complete these steps based on the value in the `Restored` column.

If all keys show `true` in the `Restored` column:

- a. Back up the OKM information:

- i. Switch to advanced privilege mode:

```
set -priv advanced
```

Enter `y` when prompted to continue.

- ii. Display the key management backup information:

```
security key-manager onboard show-backup
```

- iii. Copy the backup information to a separate file or your log file.

You will need this backup information if you need to manually recover OKM during the replacement procedure.

- iv. Return to admin mode:

```
set -priv admin
```

- b. You can safely shut down the impaired controller and proceed to the shutdown procedure.

If any keys show a value other than `true` in the `Restored` column:

a. Synchronize the onboard key manager:

```
security key-manager onboard sync
```

Enter the 32-character alphanumeric onboard key management passphrase when prompted.



This is the cluster-wide passphrase you created when you initially configured the Onboard Key Manager. If you do not have this passphrase, contact NetApp Support.

b. Verify all authentication keys are restored:

```
security key-manager key query
```

Confirm that the `Restored` column displays `true` for all authentication keys and the `Key Manager type` shows `onboard`.

c. Back up the OKM information:

i. Switch to advanced privilege mode:

```
set -priv advanced
```

Enter `y` when prompted to continue.

ii. Display the key management backup information:

```
security key-manager onboard show-backup
```

iii. Copy the backup information to a separate file or your log file.

You will need this backup information if you need to manually recover OKM during the replacement procedure.

iv. Return to admin mode:

```
set -priv admin
```

d. You can safely shut down the impaired controller and proceed to the shutdown procedure.

Shut down the controller for manual boot media recovery - FAS9500

Shut down or take over the impaired controller using one of the following options.

After completing the NVE or NSE tasks, you need to complete the shutdown of the impaired node.

If your storage system is running ONTAP 9.17.1 or later, use the [automated boot recovery procedure](#). If your system is running an earlier version of ONTAP, you must use the manual boot recovery procedure.

To shut down the impaired controller, you must determine the status of the controller and, if necessary, take over the controller so that the healthy controller continues to serve data from the impaired controller storage.

About this task

- If you have a SAN system, you must have checked event messages (`cluster kernel-service show`) for the impaired controller SCSI blade. The `cluster kernel-service show` command (from `priv advanced` mode) displays the node name, [quorum status](#) of that node, availability status of that node, and operational status of that node.

Each SCSI-blade process should be in quorum with the other nodes in the cluster. Any issues must be resolved before you proceed with the replacement.

- If you have a cluster with more than two nodes, it must be in quorum. If the cluster is not in quorum or a healthy controller shows false for eligibility and health, you must correct the issue before shutting down the impaired controller; see [Synchronize a node with the cluster](#).

Steps

1. If AutoSupport is enabled, suppress automatic case creation by invoking an AutoSupport message:

```
system node autosupport invoke -node * -type all -message MAINT=<# of hours>h
```

The following AutoSupport message suppresses automatic case creation for two hours:

```
cluster1:> system node autosupport invoke -node * -type all -message MAINT=2h
```

2. Disable automatic giveback:

- a. Enter the following command from the console of the healthy controller:

```
storage failover modify -node impaired_node_name -auto-giveback false
```

- b. Enter `y` when you see the prompt *Do you want to disable auto-giveback?*

3. Take the impaired controller to the LOADER prompt:

If the impaired controller is displaying...	Then...
The LOADER prompt	Go to the next step.
Waiting for giveback...	Press Ctrl-C, and then respond <code>y</code> when prompted.
System prompt or password prompt	<p>Take over or halt the impaired controller from the healthy controller:</p> <pre>storage failover takeover -ofnode <i>impaired_node_name</i> -halt true</pre> <p>The <code>-halt true</code> parameter brings you to the LOADER prompt.</p>

Replace the boot media and prepare for manual boot recovery - FAS9500

You must unplug the controller module, remove and open the controller module, locate and replace the boot media in the controller, and then transfer the image to the

replacement boot media.

If your storage system is running ONTAP 9.17.1 or later, use the [automated boot recovery procedure](#). If your system is running an earlier version of ONTAP, you must use the manual boot recovery procedure.

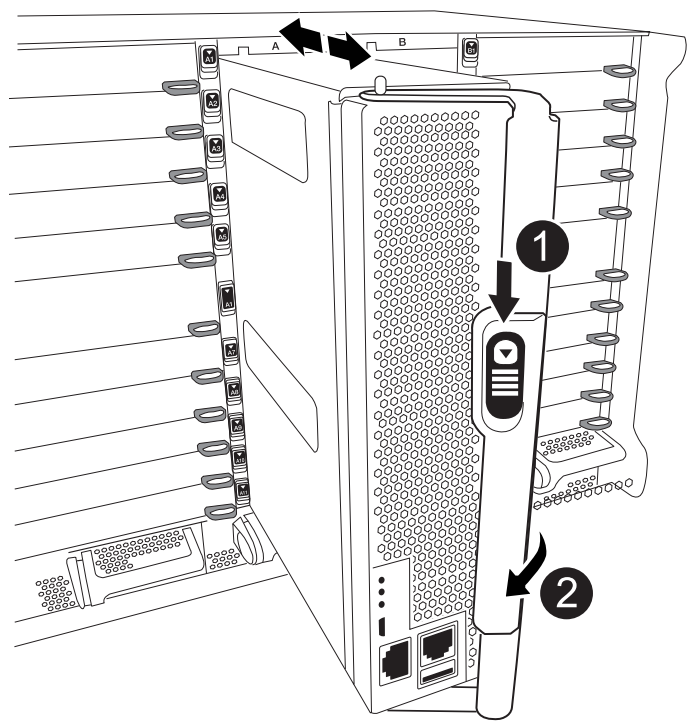
Step 1: Remove the controller module

To access components inside the controller, you must first remove the controller module from the system and then remove the cover on the controller module.

Steps

1. If you are not already grounded, properly ground yourself.
2. Unplug the cables from the impaired controller module, and keep track of where the cables were connected.
3. Slide the terra cotta button on the cam handle downward until it unlocks.

[Animation - Remove the controller](#)

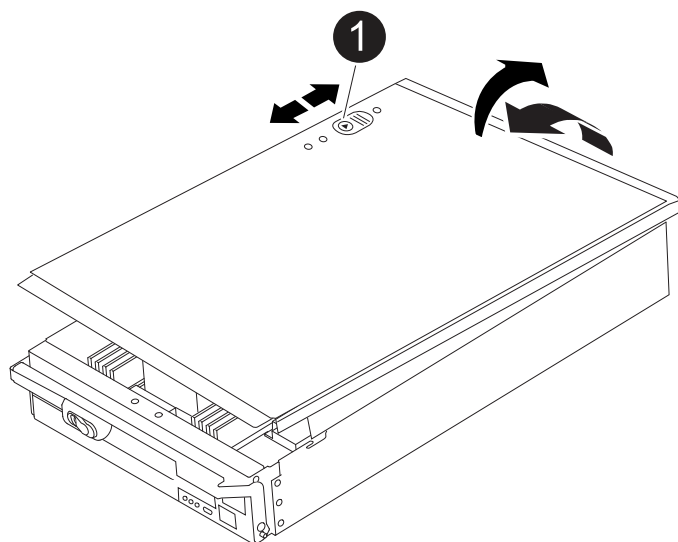


1	Cam handle release button
2	Cam handle

4. Rotate the cam handle so that it completely disengages the controller module from the chassis, and then slide the controller module out of the chassis.

Make sure that you support the bottom of the controller module as you slide it out of the chassis.

5. Place the controller module lid-side up on a stable, flat surface, press the blue button on the cover, slide the cover to the back of the controller module, and then swing the cover up and lift it off of the controller module.



1	Controller module cover locking button
----------	--

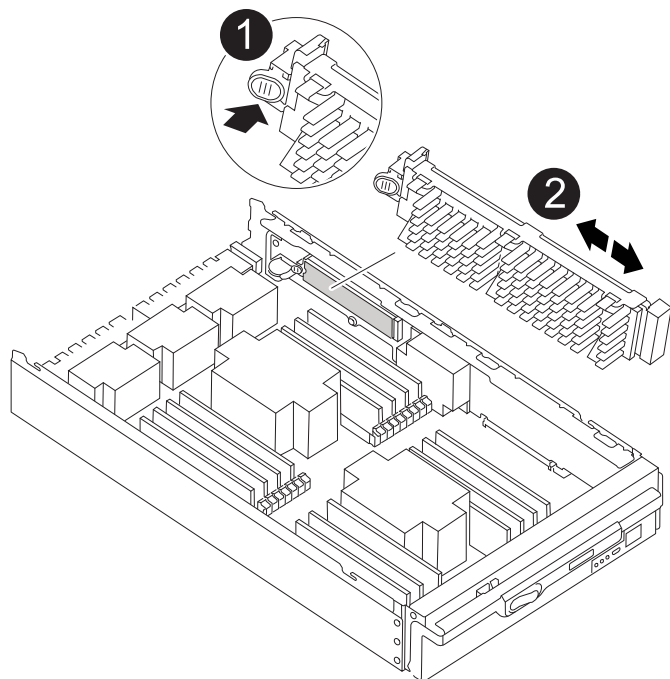
Step 2: Replace the boot media

You must locate the boot media in the controller and follow the directions to replace it.

Steps

1. Lift the black air duct at the back of the controller module and then locate the boot media using the following illustration or the FRU map on the controller module:

[Animation - Replace boot media](#)



1	Press release tab
2	Boot media

2. Press the blue button on the boot media housing to release the boot media from its housing, and then gently pull it straight out of the boot media socket.



Do not twist or pull the boot media straight up, because this could damage the socket or the boot media.

3. Align the edges of the replacement boot media with the boot media socket, and then gently push it into the socket.
4. Check the boot media to make sure that it is seated squarely and completely in the socket.

If necessary, remove the boot media and reseal it into the socket.

5. Push the boot media down to engage the locking button on the boot media housing.
6. Reinstall the controller module lid by aligning the pins on the lid with the slots on the motherboard carrier, and then slide the lid into place.

Step 3: Transfer the boot image to the boot media

You can install the system image to the replacement boot media using a USB flash drive with the image installed on it. However, you must restore the var file system during this procedure.

Before you begin

- You must have a USB flash drive, formatted to FAT32, with at least 4GB capacity.
- Download a copy of the same image version of ONTAP as what the impaired controller was running. You can download the appropriate image from the Downloads section on the NetApp Support Site. Use the

`version -v` command to display if your version of ONTAP supports NVE. If the command output displays `<10no- DARE>`, your version of ONTAP does not support NVE.

- If NVE is supported by your version of ONTAP, download the image with NetApp Volume Encryption, as indicated in the download button.
- If NVE is not supported, download the image without NetApp Volume Encryption, as indicated in the download button.
- If your system is a stand-alone system you do not need a network connection, but you must perform an additional reboot when restoring the var file system.

Steps

1. If you have not done so, download and copy the appropriate service image from the [NetApp Support Site](#) to the USB flash drive.
 - a. Download the service image from the Downloads link on the page, to your work space on your laptop.
 - b. Unzip the service image.



If you are extracting the contents using Windows, do not use WinZip to extract the netboot image. Use another extraction tool, such as 7-Zip or WinRAR.

The USB flash drive should have the appropriate ONTAP image of what the impaired controller is running.

2. Align the end of the controller module with the opening in the chassis, and then gently push the controller module halfway into the system.
3. Recable the controller module, as needed.
4. Insert the USB flash drive into the USB slot on the controller module.

Make sure that you install the USB flash drive in the slot labeled for USB devices, and not in the USB console port.

5. Push the controller module all the way into the system, making sure that the cam handle clears the USB flash drive, firmly push the cam handle to finish seating the controller module, and then push the cam handle to the closed position.

The controller begins to boot as soon as it is completely installed into the chassis.

6. Interrupt the boot process to stop at the LOADER prompt by pressing Ctrl-C when you see Starting AUTOBOOT press Ctrl-C to abort....

If you miss this message, press Ctrl-C, select the option to boot to Maintenance mode, and then halt the controller to boot to LOADER.

7. If the controller is in a stretch or fabric-attached MetroCluster, you must restore the FC adapter configuration:

- a. Boot to Maintenance mode: `boot_ontap maint`
- b. Set the MetroCluster ports as initiators: `ucadmin modify -m fc -t initiator adapter_name`
- c. Halt to return to Maintenance mode: `halt`

The changes will be implemented when the system is booted.

Manual boot media recovery from a USB drive - FAS9500

After installing the new boot media device in your system, you can boot the recovery image from a USB drive and restore the configuration from the partner node.

If your storage system is running ONTAP 9.17.1 or later, use the [automated boot recovery procedure](#). If your system is running an earlier version of ONTAP, you must use the manual boot recovery procedure.

Before you begin

- Ensure your console is connected to the impaired controller.
- Verify you have a USB flash drive with the recovery image.
- Determine if your system uses encryption. You will need to select the appropriate option in step 3 based on whether encryption is enabled.

Steps

1. From the LOADER prompt on the impaired controller, boot the recovery image from the USB flash drive:

```
boot_recovery
```

The recovery image is downloaded from the USB flash drive.

2. When prompted, enter the name of the image or press **Enter** to accept the default image displayed in brackets.
3. Restore the var file system using the procedure for your ONTAP version:

ONTAP 9.16.0 or earlier

Complete the following steps on the impaired controller and partner controller:

- a. **On the impaired controller:** Press `Y` when you see `Do you want to restore the backup configuration now?`
- b. **On the impaired controller:** If prompted, press `Y` to overwrite `/etc/ssh/ssh_host_ecdsa_key`.
- c. **On the partner controller:** Set the impaired controller to advanced privilege level:

```
set -privilege advanced
```

- d. **On the partner controller:** Run the restore backup command:

```
system node restore-backup -node local -target-address  
impaired_node_IP_address
```



If you see any message other than a successful restore, contact NetApp Support.

- e. **On the partner controller:** Return to admin level:

```
set -privilege admin
```

- f. **On the impaired controller:** Press `Y` when you see `Was the restore backup procedure successful?`
- g. **On the impaired controller:** Press `Y` when you see `...would you like to use this restored copy now?`
- h. **On the impaired controller:** Press `Y` when prompted to reboot, then press `Ctrl-C` when you see the Boot Menu.
- i. **On the impaired controller:** Do one of the following:
 - If the system does not use encryption, select *Option 1 Normal Boot* from the Boot Menu.
 - If the system uses encryption, go to [Restore encryption](#).

ONTAP 9.16.1 or later

Complete the following steps on the impaired controller:

- a. Press `Y` when prompted to restore the backup configuration.

After the restore procedure is successful, this message displays: `syncflash_partner:`
`Restore from partner complete`

- b. Press `Y` when prompted to confirm that the restore backup was successful.
- c. Press `Y` when prompted to use the restored configuration.
- d. Press `Y` when prompted to reboot the node.
- e. Press `Y` when prompted to reboot again, then press `Ctrl-C` when you see the Boot Menu.
- f. Do one of the following:
 - If the system does not use encryption, select *Option 1 Normal Boot* from the Boot Menu.

- If the system uses encryption, go to [Restore encryption](#).

4. Connect the console cable to the partner controller.
5. Return the controller to normal operation by giving back its storage:

```
storage failover giveback -fromnode local
```

6. If you disabled automatic giveback, reenable it:

```
storage failover modify -node local -auto-giveback true
```

7. If AutoSupport is enabled, restore automatic case creation:

```
system node autosupport invoke -node * -type all -message MAINT=END
```

Restore encryption - FAS9500

Restore encryption on the replacement boot media.

If your storage system is running ONTAP 9.17.1 or later, use the [automated boot recovery procedure](#). If your system is running an earlier version of ONTAP, you must use the manual boot recovery procedure.

Complete the appropriate steps to restore encryption on your system based on your key manager type. If you are unsure which key manager your system uses, check the settings you captured at the beginning of the boot media replacement procedure.

Onboard Key Manager (OKM)

Restore the Onboard Key Manager (OKM) configuration from the ONTAP boot menu.

Before you begin

Ensure you have the following information available:

- Cluster-wide passphrase entered while [enabling onboard key management](#)
- [Backup information for the Onboard Key Manager](#)
- Verification that you have the correct passphrase and backup data using the [How to verify onboard key management backup and cluster-wide passphrase](#) procedure

Steps

On the impaired controller:

1. Connect the console cable to the impaired controller.
2. From the ONTAP boot menu, select the appropriate option:

ONTAP version	Select this option
ONTAP 9.8 or later	<p>Select option 10.</p> <p>Show example boot menu</p> <div><p>Please choose one of the following:</p><ul style="list-style-type: none">(1) Normal Boot.(2) Boot without /etc/rc.(3) Change password.(4) Clean configuration and initialize all disks.(5) Maintenance mode boot.(6) Update flash from backup config.(7) Install new software first.(8) Reboot node.(9) Configure Advanced Drive Partitioning.(10) Set Onboard Key Manager recovery secrets.(11) Configure node for external key management.<p>Selection (1-11)? 10</p></div>

ONTAP version	Select this option
ONTAP 9.7 and earlier	<p>Select the hidden option <code>recover_onboard_keymanager</code></p> <p>Show example boot menu</p> <div> <p>Please choose one of the following:</p> <ul style="list-style-type: none"> (1) Normal Boot. (2) Boot without <code>/etc/rc</code>. (3) Change password. (4) Clean configuration and initialize all disks. (5) Maintenance mode boot. (6) Update flash from backup config. (7) Install new software first. (8) Reboot node. (9) Configure Advanced Drive Partitioning. <p>Selection (1-19)?</p> <p><code>recover_onboard_keymanager</code></p> </div>

- Confirm that you want to continue the recovery process when prompted:

Show example prompt

```
This option must be used only in disaster recovery procedures. Are you
sure? (y or n):
```

- Enter the cluster-wide passphrase twice.

While entering the passphrase, the console does not show any input.

Show example prompt

```
Enter the passphrase for onboard key management:

Enter the passphrase again to confirm:
```

- Enter the backup information:
 - Paste the entire content from the BEGIN BACKUP line through the END BACKUP line, including the dashes.

Show example prompt

Enter the backup data:

-----BEGIN

BACKUP-----

01234567890123456789012345678901234567890123456789012345678901
23

12345678901234567890123456789012345678901234567890123456789012
34

23456789012345678901234567890123456789012345678901234567890123
45

34567890123456789012345678901234567890123456789012345678901234
56

45678901234567890123456789012345678901234567890123456789012345
67

[illegible][illegible][illegible][illegible][illegible][illegible][illegible][illegible][illegible][illegible][illegible][illegible][illegible][illegible][illegible]

```
AAAAAAAAAAAAAAAAAAAAAAAAAAAAAAAAAAAAAAAAAAAAAAAAAAAAAAAAAAAA
AA
AAAAAAAAAAAAAAAAAAAAAAAAAAAAAAAAAAAAAAAAAAAAAAAAAAAAAAAAAAAA
AA
AAAAAAAAAAAAAAAAAAAAAAAAAAAAAAAAAAAAAAAAAAAAAAAAAAAAAAAAAAAA
AA
01234567890123456789012345678901234567890123456789012345678901
23
12345678901234567890123456789012345678901234567890123456789012
34
23456789012345678901234567890123456789012345678901234567890123
45
AAAAAAAAAAAAAAAAAAAAAAAAAAAAAAAAAAAAAAAAAAAAAAAAAAAAAAAAAAAA
AA
AAAAAAAAAAAAAAAAAAAAAAAAAAAAAAAAAAAAAAAAAAAAAAAAAAAAAAAAAAAA
AA
AAAAAAAAAAAAAAAAAAAAAAAAAAAAAAAAAAAAAAAAAAAAAAAAAAAAAAAAAAAA
AA

-----END
BACKUP-----
```

b. Press Enter twice at the end of the input.

The recovery process completes and displays the following message:

Successfully recovered keymanager secrets.

Show example prompt

```
Trying to recover keymanager secrets....
Setting recovery material for the onboard key manager
Recovery secrets set successfully
Trying to delete any existing km_onboard.wkeydb file.

Successfully recovered keymanager secrets.

*****
*****
* Select option "(1) Normal Boot." to complete recovery
process.
*
* Run the "security key-manager onboard sync" command to
synchronize the key database after the node reboots.
*****
*****
```



Do not proceed if the displayed output is anything other than Successfully recovered keymanager secrets. Perform troubleshooting to correct the error.

6. Select option 1 from the boot menu to continue booting into ONTAP.

Show example prompt

```
*****
*****
* Select option "(1) Normal Boot." to complete the recovery
process.
*
*****
*****

(1) Normal Boot.
(2) Boot without /etc/rc.
(3) Change password.
(4) Clean configuration and initialize all disks.
(5) Maintenance mode boot.
(6) Update flash from backup config.
(7) Install new software first.
(8) Reboot node.
(9) Configure Advanced Drive Partitioning.
(10) Set Onboard Key Manager recovery secrets.
(11) Configure node for external key management.
Selection (1-11)? 1
```

7. Confirm that the controller's console displays the following message:

```
Waiting for giveback...(Press Ctrl-C to abort wait)
```

On the partner controller:

8. Giveback the impaired controller:

```
storage failover giveback -fromnode local -only-cfo-aggregates true
```

On the impaired controller:

9. After booting with only the CFO aggregate, synchronize the key manager:

```
security key-manager onboard sync
```

10. Enter the cluster-wide passphrase for the Onboard Key Manager when prompted.

Show example prompt

Enter the cluster-wide passphrase for the Onboard Key Manager:

All offline encrypted volumes will be brought online and the corresponding volume encryption keys (VEKs) will be restored automatically within 10 minutes. If any offline encrypted volumes are not brought online automatically, they can be brought online manually using the "volume online -vserver <vserver> -volume <volume_name>" command.



If the sync is successful, the cluster prompt is returned with no additional messages. If the sync fails, an error message appears before returning to the cluster prompt. Do not continue until the error is corrected and the sync runs successfully.

11. Verify that all keys are synced:

```
security key-manager key query -restored false
```

The command should return no results. If any results appear, repeat the sync command until no results are returned.

On the partner controller:

12. Giveback the impaired controller:

```
storage failover giveback -fromnode local
```

13. Restore automatic giveback if you disabled it:

```
storage failover modify -node local -auto-giveback true
```

14. If AutoSupport is enabled, restore automatic case creation:

```
system node autosupport invoke -node * -type all -message MAINT=END
```

External Key Manager (EKM)

Restore the External Key Manager configuration from the ONTAP boot menu.

Before you begin

Gather the following files from another cluster node or from your backup:

- /cfcard/knip/servers.cfg file or the KMIP server address and port
- /cfcard/knip/certs/client.crt file (client certificate)
- /cfcard/knip/certs/client.key file (client key)
- /cfcard/knip/certs/CA.pem file (KMIP server CA certificates)

Steps

On the impaired controller:

1. Connect the console cable to the impaired controller.
2. Select option 11 from the ONTAP boot menu.

Show example boot menu

```
(1) Normal Boot.
(2) Boot without /etc/rc.
(3) Change password.
(4) Clean configuration and initialize all disks.
(5) Maintenance mode boot.
(6) Update flash from backup config.
(7) Install new software first.
(8) Reboot node.
(9) Configure Advanced Drive Partitioning.
(10) Set Onboard Key Manager recovery secrets.
(11) Configure node for external key management.
Selection (1-11)? 11
```

3. Confirm you have gathered the required information when prompted:

Show example prompt

```
Do you have a copy of the /cfcard/kmip/certs/client.crt file?
{y/n}
Do you have a copy of the /cfcard/kmip/certs/client.key file?
{y/n}
Do you have a copy of the /cfcard/kmip/certs/CA.pem file? {y/n}
Do you have a copy of the /cfcard/kmip/servers.cfg file? {y/n}
```

4. Enter the client and server information when prompted:
 - a. Enter the client certificate (client.crt) file contents, including the BEGIN and END lines.
 - b. Enter the client key (client.key) file contents, including the BEGIN and END lines.
 - c. Enter the KMIP server CA(s) (CA.pem) file contents, including the BEGIN and END lines.
 - d. Enter the KMIP server IP address.
 - e. Enter the KMIP server port (press Enter to use the default port 5696).

Show example

```
Enter the client certificate (client.crt) file contents:
-----BEGIN CERTIFICATE-----
<certificate_value>
-----END CERTIFICATE-----

Enter the client key (client.key) file contents:
-----BEGIN RSA PRIVATE KEY-----
<key_value>
-----END RSA PRIVATE KEY-----

Enter the KMIP server CA(s) (CA.pem) file contents:
-----BEGIN CERTIFICATE-----
<certificate_value>
-----END CERTIFICATE-----

Enter the IP address for the KMIP server: 10.10.10.10
Enter the port for the KMIP server [5696]:

System is ready to utilize external key manager(s).
Trying to recover keys from key servers....
kmip_init: configuring ports
Running command '/sbin/ifconfig e0M'
..
..
kmip_init: cmd: ReleaseExtraBSDPort e0M
```

The recovery process completes and displays the following message:

Successfully recovered keymanager secrets.

Show example

```
System is ready to utilize external key manager(s).
Trying to recover keys from key servers....
Performing initialization of OpenSSL
Successfully recovered keymanager secrets.
```

5. Select option 1 from the boot menu to continue booting into ONTAP.

Show example prompt

```
*****
*****
* Select option "(1) Normal Boot." to complete the recovery
process.
*
*****
*****

(1) Normal Boot.
(2) Boot without /etc/rc.
(3) Change password.
(4) Clean configuration and initialize all disks.
(5) Maintenance mode boot.
(6) Update flash from backup config.
(7) Install new software first.
(8) Reboot node.
(9) Configure Advanced Drive Partitioning.
(10) Set Onboard Key Manager recovery secrets.
(11) Configure node for external key management.
Selection (1-11)? 1
```

6. Restore automatic giveback if you disabled it:

```
storage failover modify -node local -auto-giveback true
```

7. If AutoSupport is enabled, restore automatic case creation:

```
system node autosupport invoke -node * -type all -message MAINT=END
```

Return the failed boot media to NetApp - FAS9500

Return the failed part to NetApp, as described in the RMA instructions shipped with the kit. See the [Part Return and Replacements](#) page for further information.

Copyright information

Copyright © 2026 NetApp, Inc. All Rights Reserved. Printed in the U.S. No part of this document covered by copyright may be reproduced in any form or by any means—graphic, electronic, or mechanical, including photocopying, recording, taping, or storage in an electronic retrieval system—without prior written permission of the copyright owner.

Software derived from copyrighted NetApp material is subject to the following license and disclaimer:

THIS SOFTWARE IS PROVIDED BY NETAPP “AS IS” AND WITHOUT ANY EXPRESS OR IMPLIED WARRANTIES, INCLUDING, BUT NOT LIMITED TO, THE IMPLIED WARRANTIES OF MERCHANTABILITY AND FITNESS FOR A PARTICULAR PURPOSE, WHICH ARE HEREBY DISCLAIMED. IN NO EVENT SHALL NETAPP BE LIABLE FOR ANY DIRECT, INDIRECT, INCIDENTAL, SPECIAL, EXEMPLARY, OR CONSEQUENTIAL DAMAGES (INCLUDING, BUT NOT LIMITED TO, PROCUREMENT OF SUBSTITUTE GOODS OR SERVICES; LOSS OF USE, DATA, OR PROFITS; OR BUSINESS INTERRUPTION) HOWEVER CAUSED AND ON ANY THEORY OF LIABILITY, WHETHER IN CONTRACT, STRICT LIABILITY, OR TORT (INCLUDING NEGLIGENCE OR OTHERWISE) ARISING IN ANY WAY OUT OF THE USE OF THIS SOFTWARE, EVEN IF ADVISED OF THE POSSIBILITY OF SUCH DAMAGE.

NetApp reserves the right to change any products described herein at any time, and without notice. NetApp assumes no responsibility or liability arising from the use of products described herein, except as expressly agreed to in writing by NetApp. The use or purchase of this product does not convey a license under any patent rights, trademark rights, or any other intellectual property rights of NetApp.

The product described in this manual may be protected by one or more U.S. patents, foreign patents, or pending applications.

LIMITED RIGHTS LEGEND: Use, duplication, or disclosure by the government is subject to restrictions as set forth in subparagraph (b)(3) of the Rights in Technical Data -Noncommercial Items at DFARS 252.227-7013 (FEB 2014) and FAR 52.227-19 (DEC 2007).

Data contained herein pertains to a commercial product and/or commercial service (as defined in FAR 2.101) and is proprietary to NetApp, Inc. All NetApp technical data and computer software provided under this Agreement is commercial in nature and developed solely at private expense. The U.S. Government has a non-exclusive, non-transferrable, nonsublicensable, worldwide, limited irrevocable license to use the Data only in connection with and in support of the U.S. Government contract under which the Data was delivered. Except as provided herein, the Data may not be used, disclosed, reproduced, modified, performed, or displayed without the prior written approval of NetApp, Inc. United States Government license rights for the Department of Defense are limited to those rights identified in DFARS clause 252.227-7015(b) (FEB 2014).

Trademark information

NETAPP, the NETAPP logo, and the marks listed at <http://www.netapp.com/TM> are trademarks of NetApp, Inc. Other company and product names may be trademarks of their respective owners.