



# **ONTAP tools for VMware vSphere 10.1 documentation**

ONTAP tools for VMware vSphere 10

NetApp  
September 30, 2025

# Table of Contents

ONTAP tools for VMware vSphere 10.1 documentation	1
Release notes	2
Release notes	2
What's new in ONTAP tools for VMware vSphere 10.1	2
ONTAP tools for VMware vSphere 9 and ONTAP tools for VMware vSphere 10 feature comparison	4
Concepts	5
ONTAP tools for VMware vSphere overview	5
Key concepts and terms	5
Role based access control	7
Overview of role-based access control in ONTAP tools for VMware vSphere	7
Components of vCenter Server permissions	9
Assign and modify permissions for vCenter Server	10
Privileges required for ONTAP tools for VMware vSphere tasks	11
Recommended ONTAP roles for ONTAP tools for VMware vSphere	12
High availability for ONTAP tools for VMware vSphere	12
AutoSupport	13
Deploy ONTAP tools for VMware vSphere	14
Prerequisites for deploying ONTAP tools for VMware vSphere	14
Minimum storage and application requirements	14
Additional deployment considerations	14
Download ONTAP tools for VMware vSphere	15
Content library	15
Configuration limits to deploy ONTAP tools for VMware vSphere	16
ONTAP tools for VMware vSphere - Storage Replication Adapter (SRA)	16
Prepare to deploy ONTAP tools for VMware vSphere	17
Preparing for deployment	17
Deploy non-HA single-node configuration	18
Deploy HA configuration	21
Recover your ONTAP tools for VMware vSphere setup	25
Deployment error codes	27
Configure ONTAP tools	31
ONTAP tools Manager user interface	31
Add and manage vCenter Server instances	31
Add a vCenter Server instance	31
Register ONTAP tools for VMware vSphere plug-in with vCenter Server instance	32
Unregister ONTAP tools for VMware vSphere plug-in	32
Register the VASA Provider with a vCenter Server instance	32
Verify registered VASA provider	33
Install the NFS VAAI plug-in	33
Update host data	34
Configure ESXi host settings	34
Configure ESXi server multipath and timeout settings	34
Set ESXi host values	35

Discover storage systems and hosts . . . . .	36
Add a storage backend . . . . .	37
Add storage backend using ONTAP tools Manager . . . . .	37
Add storage backend using vSphere client UI: . . . . .	38
Associate a storage backend with a vCenter Server instance . . . . .	38
Configure network access . . . . .	39
Configure ONTAP user roles and privileges . . . . .	39
SVM aggregate mapping requirements . . . . .	40
Create ONTAP user and role manually . . . . .	41
List of minimum privileges required for non-admin global scoped cluster user . . . . .	41
NetApp ONTAP tools for VMware vSphere plug-in Dashboard overview . . . . .	42
Create a datastore . . . . .	44
Create a vVols datastore . . . . .	45
Create an NFS datastore . . . . .	45
Create a VMFS datastore . . . . .	46
Protect datastores and virtual machines . . . . .	47
Enable SRA to protect datastores . . . . .	47
Configure storage system for disaster recovery . . . . .	47
Configure SRA for SAN and NAS environments . . . . .	47
Configure SRA for highly scaled environments . . . . .	48
Configure SRA on the SRM appliance . . . . .	49
Update SRA credentials . . . . .	50
Configure protected and recovery sites . . . . .	51
Configure protection groups . . . . .	51
Pair protected and recovery sites . . . . .	51
Configure protected and recovery site resources . . . . .	52
Verify replicated storage systems . . . . .	56
Manage ONTAP tools . . . . .	57
Manage datastores . . . . .	57
Mount NFS and VMFS datastores . . . . .	57
Mount a vVols datastore . . . . .	57
Resize NFS and VMFS datastores . . . . .	57
Expand vVols Datastores . . . . .	58
Shrink vVols datastores . . . . .	58
Delete datastores . . . . .	58
ONTAP storage views for datastores . . . . .	59
Virtual machine storage view . . . . .	60
Manage storage thresholds . . . . .	60
Manage storage backends . . . . .	61
Discover storage . . . . .	61
Modify storage backends . . . . .	61
Remove storage backends . . . . .	62
Drill down view of storage backend . . . . .	62
Manage vCenter Server instance . . . . .	63
Associate or dissociate storage backends with vCenter Server instance . . . . .	63

Modify vCenter Server instance . . . . .	63
Remove vCenter Server instance . . . . .	63
Manage certificates . . . . .	64
Manage igroups and export policies . . . . .	64
Access ONTAP tools for VMware vSphere maintenance console . . . . .	65
Overview of ONTAP tools for VMware vSphere maintenance console . . . . .	65
Configure remote diagnostic access . . . . .	66
Start SSH on other nodes . . . . .	67
Update the vCenter Server and ONTAP credentials . . . . .	67
ONTAP tool reports . . . . .	68
Collect the log files . . . . .	68
Manage virtual machines . . . . .	69
Considerations to migrate or clone virtual machines . . . . .	69
Migrate virtual machines with NFS and VMFS datastores to vVols datastores . . . . .	70
VASA cleanup . . . . .	70
Modify ESXi host settings using ONTAP tools . . . . .	71
Manage passwords . . . . .	71
Change ONTAP tools Manager password . . . . .	71
Reset ONTAP tools Manager password . . . . .	71
Reset application user password . . . . .	72
Reset maintenance console user password . . . . .	72
Clean up volumes . . . . .	73
Upgrade ONTAP tools . . . . .	75
Upgrade to the latest release of ONTAP tools . . . . .	75
Upgrade error codes . . . . .	77
Migrate ONTAP tools . . . . .	79
Migrate to the latest release of ONTAP tools . . . . .	79
Common migration steps . . . . .	79
SRA migration steps . . . . .	79
VASA provider migration steps . . . . .	80
Automate using REST APIs . . . . .	85
Overview of REST APIs . . . . .	85
How to access ONTAP tools for VMware vSphere REST API . . . . .	85
Network considerations . . . . .	85
ONTAP tools for VMware vSphere API online documentation page . . . . .	85
Custom software and tools . . . . .	85
Input variables controlling an API request . . . . .	86
HTTP methods . . . . .	86
Request headers . . . . .	86
Request body . . . . .	86
Filtering objects . . . . .	87
Requesting specific object fields . . . . .	87
Sorting objects in the output set . . . . .	88
Pagination when retrieving objects in a collection . . . . .	88
Size properties . . . . .	89

Access ONTAP tools for VMware vSphere API reference documentation through the Swagger UI . . . . .	89
Get started with the REST API . . . . .	90
Hello World . . . . .	90
Workflows . . . . .	90
Storage discovery . . . . .	90
SVM aggregate mapping requirements . . . . .	91
Onboard storage backend (SVM or Cluster) with a vCenter Server instance . . . . .	92
Create vVols datastore . . . . .	92
Mount and unmount a vVols datastore . . . . .	94
Expand or shrink Storage of vVol Datastore . . . . .	95
Delete vVols datastore . . . . .	97
Manage Storage threshold . . . . .	98
Manage network access . . . . .	99
Legal notices . . . . .	100
Copyright . . . . .	100
Trademarks . . . . .	100
Patents . . . . .	100
Privacy policy . . . . .	100
Open source . . . . .	100

# **ONTAP tools for VMware vSphere 10.1 documentation**

# Release notes

## Release notes

Learn about the new and enhanced features available in ONTAP tools for VMware vSphere 10.1.

For a complete list of new features and enhancements, see [What's new in ONTAP tools for VMware vSphere 10.1](#).

To learn more about whether migrating from ONTAP tools for VMware vSphere 9 to ONTAP tools 10.1 is right for your deployment, refer to [ONTAP tools for VMware vSphere 9 and ONTAP tools for VMware vSphere 10 feature comparison](#). Migration is supported from ONTAP tools for VMware vSphere 9.10D2, 9.11D4, 9.12, and 9.13 releases to ONTAP tools 10.1.

For details about known issues and limitations in ONTAP tools for VMware vSphere 10.1, refer to the [ONTAP tools for VMware vSphere 10.1 Release Notes](#). You must sign in with your NetApp account or create an account to access the Release Notes.

## What's new in ONTAP tools for VMware vSphere 10.1

Learn about the new capabilities available in ONTAP tools for VMware vSphere 10.1.

Update	Description
<a href="#">NFS and VMFS datastore support</a>	This release of ONTAP tools for VMware vSphere supports vVols datastore provisioning through the VASA Provider and NFS v3 and VMFS datastores. Datastore operations like create, resize, mount, unmount, and delete are supported. You can provision VMFS datastores using iSCSI protocol. As a VMware admin, you can seamlessly deploy, upgrade and transition iSCSI VMFS datastores from ONTAP tools for VMware vSphere 9.xx version to 10.1 version. Migration is supported from ONTAP tools for VMware vSphere 9.10D2, 9.11D4, 9.12, and 9.13 releases to 10.1 release.
<a href="#">Storage Replication Adapter (SRA) for NFS and VMFS datastores</a>	<p>SRA implements VMware Site Recovery Manager (SRM) specification-based disaster recovery (DR). For NFS datastores, ONTAP volumes are mounted on ESXi host using NFS v3 protocols. For VMFS datastores, ONTAP LUNS are mounted on ESXi host using iSCSI protocol.</p> <p>ONTAP SnapMirror relationships replicate volumes and LUNs in the destination site. SRA implements testFailover, failover, and reprotect commands invoked from VMware SRM. As part of implementation, SRA ensures that all volumes and LUNs are mountable on destination in recovery incident and the secondary site volumes and LUNs are read to avoid data discrepancy.</p>

Update	Description
Rich vCenter User Interface(UI) integration support for all workflows	<p>ONTAP tools for VMware vSphere 10.1 provides a graphical user interface for workflows to bring parity with ONTAP tools for VMware vSphere 9.xx releases. The remote plug-in supports:</p> <ul style="list-style-type: none"> <li>• <a href="#">Observability and Monitoring of NFS, VMFS, and vVols datastores</a></li> <li>• <a href="#">Storage Replication Adapter for NFS and VMFS datastores</a></li> <li>• <a href="#">VASA provider registration and unregistration</a></li> <li>• <a href="#">VAAI plug-in installation</a></li> <li>• <a href="#">Log bundle download for the selected vCenter</a></li> </ul>
Easy deployment variant support	<p>You can quickly onboard ONTAP tools for VMware vSphere 10.1 and experience its features using the easy deployment option. SnapShot-based recovery is supported in easy deployment.</p>
ONTAP tools Manager UI for all ONTAP tools admin workflows	<p>ONTAP tools Manager provides better control to ONTAP tools administrator over the managed vCenter instances and onboarded storage backends. ONTAP tools Manager helps in:</p> <ul style="list-style-type: none"> <li>• vCenter management - Add and manage vCenter instances to ONTAP tools for VMware vSphere.</li> <li>• Storage backend management - Add and manage ONTAP storage clusters to ONTAP tools for VMware vSphere and map them to onboarded vCenter instances globally.</li> <li>• Log bundle downloads - Collect log files for ONTAP tools for VMware vSphere.</li> <li>• Certificate management - Change the self-signed certificate to custom CA certificate and renew or refresh all certificates.</li> <li>• Password management - Reset OVA application password for the user.</li> </ul>
Certificate management	<p>Single instance of ONTAP tools for VMware vSphere can manage multiple vCenter instances. When you deploy ONTAP tools for VMware vSphere, self-signed certificate is assigned to all vCenter instances by default. When you're managing multiple vCenter instances and you want to enable vVols capability on multiple vCenter instances, you must change the self-signed certificate to custom CA certificate using the ONTAP tools Manager interface. You can use the same interface to renew or refresh all certificates.</p>
Zero-Recovery point objective (RPO) recovery	<p>If you lose your ONTAP tools for VMware vSphere setup, you can recover your ONTAP tools setup using the ONTAP data management software without any data loss. Zero RPO recovery is not supported for easy deployment options.</p>
iSCSI protocol support for deployment	<p>Trident supports NFS and iSCSI protocols to provision persistent volumes. When deploying the ONTAP tools for VMware vSphere, you can use the iSCSI protocol to store VASA provider services data in persistent volumes.</p>



Update	Description
IPv6 address support for storage and vCenter onboarding	You can onboard storage backends with IPv4 addresses, IPv6 addresses, or fully qualified domain names (FQDNs). Storage services and Storage Proxy services use onboarded credentials with the same IPv4 or IPv6 addresses to communicate with the ONTAP REST API. Data pathing is supported with IPv4 addresses, IPv6 addresses, or FQDN using export policy rules.

## ONTAP tools for VMware vSphere 9 and ONTAP tools for VMware vSphere 10 feature comparison

Learn whether migrating from ONTAP tools for VMware vSphere 9 to ONTAP tools for VMware vSphere 10.1 is right for you. For the most up-to-date compatibility information see [NetApp Interoperability Matrix Tool](#).

Feature	ONTAP tools 9.13	ONTAP tools 10.1
Key value proposition	Streamline and simplify day-0 to day-2 operations with enhanced security, compliance and automation capabilities	Evolving ONTAP tools 10.x towards 9.x parity while extending high availability, performance, and scale limits
ONTAP release qualification	ONTAP 9.9.1 to ONTAP 9.15.1	ONTAP 9.12.1 to ONTAP 9.14.1
VMware release support	vSphere 7.x-8.x  VMware Site Recovery Manager (SRM) 8.5 to VMware Live Site Recovery 9.0	vSphere 7.x-8.x  VMware Site Recovery Manager (SRM) 8.7 to VMware Live Site Recovery 9.0
Protocol support	NFS and VMFS datastores: NFS (v3 and v4.1), VMFS (iSCSI and FCP)  vVols datastores: iSCSI, FCP, NVMe/FC, NFS v3	NFS and VMFS datastores: NFS (v3 and v4.1), VMFS (iSCSI)  vVols datastores: iSCSI, NFS v3
Scalability	Hosts and VMs: 300 Hosts, up to 10K VMs  Datastores: 600 NFS, up to 50 VMFS, up to 250 vVols  vVols: Up to 14K	Hosts and VMs: 600 Hosts  vVols: Up to 140K
Observability	Performance, capacity, and host compliance dashboards  Dynamic VM and datastore reports	Updated performance, capacity, and host compliance dashboards  Dynamic VM and datastore reports
Data protection	SRA replication for VMFS and NFS  FlexVols based replication for vVols  SCV integration and interoperable for backup	SRA replication for iSCSI VMFS and NFS v3 datastores

# Concepts

## ONTAP tools for VMware vSphere overview

ONTAP tools for VMware vSphere is a set of tools for virtual machine lifecycle management. It integrates with the VMware ecosystem to help in datastore provisioning and in providing basic protection for virtual machines. ONTAP tools for VMware vSphere enables administrators to seamlessly manage storage lifecycle management

ONTAP tools for VMware vSphere 10.1 release is a collection of horizontally scalable, event-driven, microservices deployed as an Open Virtual Appliance (OVA). This release has REST API integration with ONTAP.

ONTAP tools for VMware vSphere consists of:

- Virtual machine functionality like basic protection and disaster recovery
- VASA Provider for VM granular management
- Storage policy-based management
- Storage Replication Adapter (SRA)

## Key concepts and terms

The following section describes the key concepts and terms used in the document.

### **Certificate authority (CA)**

CA is a trusted entity that issues Secure Sockets Layer (SSL) certificates.

### **Dual stack**

A dual-stack network is a networking environment that supports the simultaneous use of both IPv4 and IPv6 addresses.

### **High Availability (HA)**

Cluster nodes are configured in HA pairs for non-disruptive operations.

### **Logical unit number (LUN)**

A LUN is a number used to identify a logical unit within a Storage Area Network (SAN). These addressable devices are typically logical disks accessed through the Small Computer System Interface (SCSI) protocol or one of its encapsulated derivatives.

### **ONTAP tools Manager**

ONTAP tools Manager provides more control to ONTAP tools for VMware vSphere administrator over the managed vCenter Server instances and onboarded storage backends. ONTAP tools Manger helps in management of vCenter Server instances, storage backends, certificates, passwords and log bundle downloads.

## **Open Virtual Appliance (OVA)**

OVA is an open standard for packaging and distributing virtual appliances or software that must be run on virtual machines.

## **SnapMirror Active (SMAS)**

SnapMirror active sync enables business services to continue operating even through a complete site failure, supporting applications to fail over transparently using a secondary copy. Manual intervention nor custom scripting are required to trigger a failover with SnapMirror active sync.

## **Storage Replication Adapter (SRA)**

SRA is the storage vendor specific software that is installed inside the SRM appliance. The adapter enables communication between Site Recovery Manager and a storage controller at the Storage Virtual Machine (SVM) level and the cluster level configuration.

## **Storage virtual machine (SVM)**

Like a virtual machine running on a hypervisor, SVM is a logical entity that abstracts physical resources. SVM contains data volumes and one or more LIFs through which they serve data to the clients.

## **Virtual Machine File System (VMFS)**

VMFS is a clustered file system specifically designed for storing virtual machine files in VMware vSphere environments.

## **Virtual volumes (vVols)**

vVols provide a volume-level abstraction for storage used by a virtual machine. It includes several benefits and provides an alternative to using a traditional LUN. A vVol datastore is typically associated with a single LUN which acts as a container for the vVols.

## **VM Storage Policy**

VM Storage Policies are created in vCenter Server under Policies and Profiles. For vVols, create a rule set using rules from the NetApp vVols storage type provider.

## **VMware Site Recovery Manager (SRM)**

SRM provides business continuity, disaster recovery, site migration, and non-disruptive testing capabilities for VMware virtual environments.

## **VMware vSphere APIs for Storage Awareness (VASA)**

VASA is a set of APIs that integrate storage arrays with vCenter Server for management and administration. The architecture is based on several components including the VASA Provider which handles communication between VMware vSphere and the storage systems.

## **VMware vSphere Storage APIs - Array Integration (VAAI)**

VAAI is a set of APIs that enables communication between VMware vSphere ESXi hosts and the storage devices. The APIs include a set of primitive operations used by the hosts to offload storage operations to the array. VAAI can provide significant performance improvements for storage-intensive tasks.

## vVols datastore

The vVols datastore is a logical datastore representation of a vVols container which is created and maintained by a VASA Provider.

## Zero RPO

RPO stands for recovery point objective, which is the amount of data loss deemed acceptable during a given time. Zero RPO signifies that no data loss is acceptable.

# Role based access control

## Overview of role-based access control in ONTAP tools for VMware vSphere

vCenter Server provides role-based access control (RBAC) that enables you to control access to vSphere objects. vCenter Server provides centralized authentication and authorization services at many different levels within its inventory, using user and group rights with roles and privileges. vCenter Server features five main components for managing RBAC:

Components	Description
Privileges	A privilege enables or denies access to perform actions in vSphere.
Roles	A role contains one or more system privileges where each privilege defines an administrative right to a certain object or type of object in the system. By assigning a user a role, the user inherits the capabilities of the privileges defined in that role.
Users and groups	Users and groups are used in permissions to assign roles from Active Directory (AD). vCenter Server has its own local users and groups that you can use.
Permissions	Permissions allow you to assign privileges to users or groups to perform certain actions and make changes to objects inside vCenter Server. vCenter Server permissions affect only those users who log into vCenter Server rather than users who log into an ESXi host directly.
Object	An entity upon which actions are performed. VMware vCenter objects are data centers, folders, resource pools, clusters, hosts, and VMs

To successfully complete a task, you should have the appropriate vCenter Server RBAC roles. During a task, ONTAP tools for VMware vSphere checks a user's vCenter Server roles before checking the user's ONTAP privileges.



The vCenter Server roles apply to ONTAP tools for VMware vSphere vCenter users, not to administrators. By default, administrators have full access to the product and do not require roles assigned to them.

The users and groups gain access to a role by being part of a vCenter Server role.

## Key points about assigning and modifying roles for vCenter Server

You only need to set up vCenter Server roles if you want to limit access to vSphere objects and tasks. Otherwise, you can log in as an administrator. This login automatically allows you to access all vSphere objects.

Where you assign a role determines ONTAP tools for VMware vSphere tasks that a user can perform. You can modify one role at any time.

If you change the privileges within a role, the user associated with that role should log out and then log back in to enable the updated role.

## Standard roles packaged with ONTAP tools for VMware vSphere

To simplify working with vCenter Server privileges and RBAC, ONTAP tools for VMware vSphere provides standard ONTAP tools for VMware vSphere roles that enable you to perform key ONTAP tools for VMware vSphere tasks. There is also a read-only role that enables you to view the information, but not perform any tasks.

You can view ONTAP tools for VMware vSphere standard roles by clicking **Roles** on the vSphere Client home page. The roles that ONTAP tools for VMware vSphere provides enable you to perform the following tasks:

Role	Description
NetApp ONTAP tools for VMware vSphere Administrator	Provides all the native vCenter Server privileges and ONTAP tools-specific privileges that are required to perform some of ONTAP tools for VMware vSphere tasks.
NetApp ONTAP tools for VMware vSphere Read Only	Provides read-only access to ONTAP tools. These users cannot perform any ONTAP tools for VMware vSphere actions that are access-controlled.
NetApp ONTAP tools for VMware vSphere provision	<p>Provides some of the native vCenter Server privileges and ONTAP tools-specific privileges that are required to provision storage. You can perform the following tasks:</p> <ul style="list-style-type: none"><li>• Create new datastores</li><li>• Manage datastores</li></ul>

The ONTAP tools Manager admin role is not registered with vCenter Server. This role is specific to the ONTAP tools Manager.

If your company requires that you implement roles that are more restrictive than the standard ONTAP tools for VMware vSphere roles, you can use ONTAP tools for VMware vSphere roles to create new roles.

In this case, you would clone the necessary ONTAP tools for VMware vSphere roles and then edit the cloned role so that it has only the privileges your user requires.

## Permissions for ONTAP storage backends and vSphere objects

If the vCenter Server permission is sufficient, ONTAP tools for VMware vSphere then checks the ONTAP

RBAC privileges (your ONTAP role) that are associated with the storage backends credentials (the username and password) to determine whether you have sufficient privileges to perform the storage operations that are required by that ONTAP tools for VMware vSphere task on that storage backend. If you have the correct ONTAP privileges, you can access the storage backends and perform ONTAP tools for VMware vSphere tasks. The ONTAP roles determine ONTAP tools for VMware vSphere tasks that you can perform on the storage backend.

## Components of vCenter Server permissions

The vCenter Server recognizes permissions, not privileges. Each vCenter Server permission consists of three components.

The vCenter Server has the following components:

- One or more privileges (the role)

The privileges define the tasks that a user can perform.

- A vSphere object

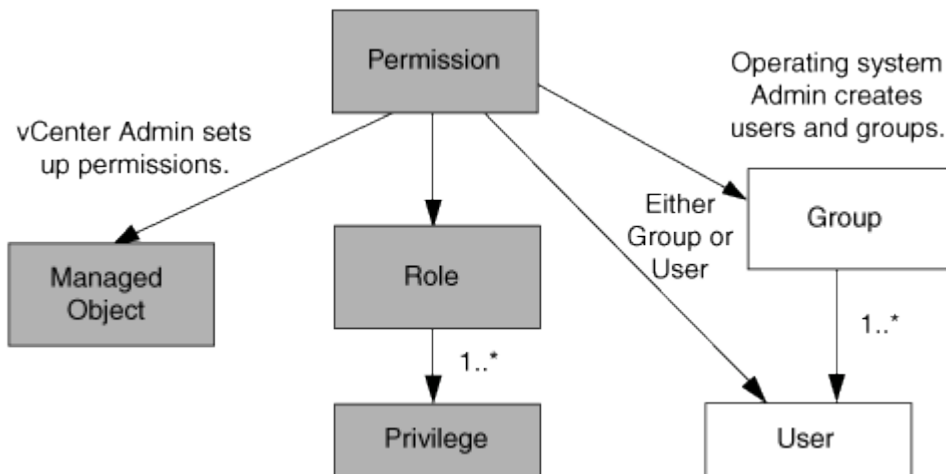
The object is the target for the tasks.

- A user or group

The user or group defines who can perform the task.



In this diagram, the gray boxes indicate components that exist in the vCenter Server, and the white boxes indicate components that exist in the operating system where the vCenter Server is running.



## Privileges

Two kinds of privileges are associated with ONTAP tools for VMware vSphere:

- Native vCenter Server privileges

These privileges come with the vCenter Server.

- ONTAP tools-specific privileges

These privileges are defined for specific ONTAP tools for VMware vSphere tasks. They are unique to ONTAP tools for VMware vSphere.

ONTAP tools for VMware vSphere tasks require both ONTAP tools-specific privileges and vCenter Server native privileges. These privileges constitute the “role” for the user. A permission can have multiple privileges. These privileges are for a user that is logged into the vCenter Server.



To simplify working with vCenter Server RBAC, ONTAP tools for VMware vSphere provides several standard roles that contain all ONTAP tools-specific and native privileges that are required to perform ONTAP tools for VMware vSphere tasks.

If you change the privileges within a permission, the user that is associated with that permission should log out, and then log in to enable the updated permission.

### **vSphere objects**

Permissions are associated with vSphere objects, such as the vCenter Server, ESXi hosts, virtual machines, datastores, datacenters, and folders. You can assign permissions to any vSphere object. Based on the permission that is assigned to a vSphere object, the vCenter Server determines who can perform which tasks on that object. For ONTAP tools for VMware vSphere specific tasks, permissions are assigned and validated only at the root-folder level (vCenter Server) and not on any other entity. Except for VAAI plug-in operation, where permissions are validated against the concerned ESXi host.

### **Users and groups**

You can use Active Directory (or the local vCenter Server machine) to set up users and groups of users. You can then use vCenter Server permissions to grant access to these users or groups to enable them to perform specific ONTAP tools for VMware vSphere tasks.



These vCenter Server permissions apply to ONTAP tools for VMware vSphere vCenter users, not to ONTAP tools for VMware vSphere administrators. By default, ONTAP tools for VMware vSphere administrators have full access to the product and do not require permissions assigned to them.

Users and groups do not have roles assigned to them. They gain access to a role by being part of a vCenter Server permission.

## **Assign and modify permissions for vCenter Server**

There are several key points to keep in mind when you are working with vCenter Server permissions. Whether a ONTAP tools for VMware vSphere task succeeds can depend on where you assigned a permission, or what actions a user took after a permission was modified.

### **Assigning permissions**

You only need to set up vCenter Server permissions if you want to limit access to vSphere objects and tasks. Otherwise, you can log in as an administrator. This login automatically allows you to access all vSphere objects.

Where you assign permission determines ONTAP tools for VMware vSphere tasks that a user can perform.

Sometimes, to ensure the completion of a task, you should assign permission at a higher level, such as the root object. This is the case when a task requires a privilege that does not apply to a specific vSphere object (for example, tracking the task) or when a required privilege applies to a non-vSphere object (for example, a storage system).

In these cases, you can set up a permission so that it is inherited by the child entities. You can also assign other permissions to the child entities. The permission assigned to a child entity always overrides the permission inherited from the parent entity. This means you can give permissions to a child entity to restrict the scope of a permission assigned to a root object and inherited by the child entity.



Unless your company's security policies require more restrictive permissions, it is a good practice to assign permissions to the root object (also referred to as the root folder).

## Permissions and non-vSphere objects

The permission that you create is applied to a non-vSphere object. For example, a storage system is not a vSphere object. If a privilege applies to a storage system, you should assign the permission containing that privilege to ONTAP tools for VMware vSphere root object because there is no vSphere object to which you can assign it.

For example, any permission that includes a privilege such as ONTAP tools for VMware vSphere privilege "Add/Modify/Skip storage systems" should be assigned at the root object level.

## Modifying permissions

You can modify one permission at any time.

If you change the privileges within a permission, the user associated with that permission should log out and then log back in to enable the updated permission.

## Privileges required for ONTAP tools for VMware vSphere tasks

Different ONTAP tools for VMware vSphere tasks require different combinations of privileges specific to ONTAP tools for VMware vSphere and native vCenter Server privileges.

To access ONTAP tools for VMware vSphere GUI, you should have the product-level, ONTAP tools-specific View privilege assigned at the correct vSphere object level. If you log in without this privilege, ONTAP tools for VMware vSphere displays an error message when you click the NetApp icon and prevents you from accessing ONTAP tools.

In **View** privilege, you can access ONTAP tools for VMware vSphere. This privilege does not enable you to perform tasks within ONTAP tools for VMware vSphere. To perform any ONTAP tools for VMware vSphere tasks, you should have the correct ONTAP tools-specific and native vCenter Server privileges for those tasks.

The assignment level determines which portions of the UI you can see. Assigning the View privilege to the root object (folder) enables you to enter ONTAP tools for VMware vSphere by clicking the NetApp icon.

You can assign the View privilege to another vSphere object level; however, doing that limits ONTAP tools for VMware vSphere menus that you can see and use.

The root object is the recommended place to assign any permission containing the View privilege.



## Recommended ONTAP roles for ONTAP tools for VMware vSphere

You can set up several recommended ONTAP roles for working with ONTAP tools for VMware vSphere and role-based access control (RBAC). These roles contain the ONTAP privileges required to perform the storage operations executed by ONTAP tools for VMware vSphere tasks.

To create new user roles, you should log in as an administrator of the storage systems running ONTAP. You can create ONTAP roles using ONTAP System Manager 9.8P1 or later.

Each ONTAP role has an associated username and password pair, which constitute the credentials of the role. If you do not log in by using these credentials, you cannot access the storage operations that are associated with the role.

As a security measure, ONTAP tools for VMware vSphere specific ONTAP roles are ordered hierarchically. This means the first role is the most restrictive and has only the privileges associated with the most basic set of ONTAP tools for VMware vSphere storage operations. The next role includes its own privileges and all the privileges associated with the previous role. Each additional role is less restrictive regarding the supported storage operations.

The following are some of the recommended ONTAP RBAC roles when using ONTAP tools for VMware vSphere. After you create these roles, you can assign them to users who must perform tasks related to storage, such as provisioning virtual machines.

Role	privileges
Discovery	This role enables you to add storage systems.
Create Storage	This role enables you to create storage. This role also includes all the privileges that are associated with the Discovery role.
Modify Storage	This role enables you to modify storage. This role also includes all the privileges that are associated with the Discovery role and the Create Storage role.
Destroy Storage	This role enables you to destroy storage. This role also includes all the privileges that are associated with the Discovery role, the Create Storage role, and the Modify Storage role.

If you are using ONTAP tools for VMware vSphere, you should also set up a policy-based management (PBM) role. This role enables you to manage storage by using storage policies. This role requires that you also set up the “Discovery” role.

## High availability for ONTAP tools for VMware vSphere

ONTAP tools for VMware vSphere supports a high-availability (HA) configuration to help provide uninterrupted functionality of ONTAP tools for VMware vSphere during failure.

High-availability (HA) solution provides for rapid recovery from outages caused by:

- Host failure



Only single node failure is supported.

- Network failure
- Virtual machine failure (Guest OS failure)
- Application (ONTAP tools) crash

No additional configuration is required for ONTAP tools for VMware vSphere to provide high availability (HA).



ONTAP tools for VMware vSphere does not support vCenter HA.

## AutoSupport

AutoSupport is a mechanism that proactively monitors the health of your system and automatically sends messages to NetApp technical support, your internal support organization, and a support partner.

AutoSupport is enabled by default when you configure your storage system for the first time. AutoSupport begins sending messages to technical support 24 hours after AutoSupport is enabled.

You can enable or disable AutoSupport only at the time of deployment. It is recommended to leave it enabled. Enabling AutoSupport helps to speed up problem detection and helps to achieve faster resolution. The system collects AutoSupport information and stores it locally, even when the AutoSupport is disabled. However, it does not send out the report to any network. You need to include 216.240.21.18 // support.netapp.com URL in your network for successful transmission.

# Deploy ONTAP tools for VMware vSphere

## Prerequisites for deploying ONTAP tools for VMware vSphere

Before deploying ONTAP tools for VMware vSphere, you should be familiar with the space requirements for the deployment package and some basic host system requirements.

You can use ONTAP tools for VMware vSphere with VMware vCenter Server Virtual Appliance (vCSA). You should deploy ONTAP tools for VMware vSphere on a supported vSphere client that includes ESXi system.

- **Installation package space requirements per node**

- 10 GB for thin provisioned installations
- 248 GB for thick provisioned installations

- **Host system sizing requirements per node**

Recommended memory as per the size of deployment and per node is as shown in the table below:

Type of deployment	CPUs	Memory (GB)
Small (S)	8	16
Medium (M)	12	24
Large (L)	16	32

Refer to [Configuration limits to deploy ONTAP tools for VMware vSphere](#) for more details.

## Minimum storage and application requirements

Storage, host, and applications	Minimum version requirements
ONTAP	Latest patch release of ONTAP 9.12.1, 9.13.1, or 9.14.1
ESXi hosts	ESXi 7.0.3
vCenter server	vCenter 7.0U3
VASA provider	3.0
OVA Application	10.1

The Interoperability Matrix Tool (IMT) contains the latest information about the supported versions of ONTAP, vCenter Server, ESXi hosts, and plug-in applications.

[Interoperability Matrix Tool](#)

## Additional deployment considerations

You should consider a few requirements while customizing the deployment of ONTAP tools.

## Application user password

This is the password assigned to the administrator account. For security reasons, it is recommended that the password length is eight to thirty characters long and contains a minimum of one upper, one lower, one digit, and one special character.

## Appliance maintenance console credentials

You should access the maintenance console by using the “maint” username. You can set the password for the “maint” user during deployment. You can use the Restart guest OS option available during VM restart in vCenter Server to change the password.

## Appliance network properties

Specify a valid DNS hostname (unqualified) as well as the static IP address for ONTAP tools for VMware vSphere and the other network parameters. The IP addresses provided should be accessible from the VLAN network that you select during the deployment. DHCP is not supported for ONTAP tools for VMware vSphere 10.1 release. All these parameters are required for proper installation and operation.

# Download ONTAP tools for VMware vSphere

You can download the .zip file that contains binaries (.ova) and signed certificates for ONTAP tools for VMware vSphere from the [NetApp Support Site](#).

When the deployment is complete, ONTAP tools for VMware vSphere and VASA products are installed in your environment. By default, ONTAP tools for VMware vSphere starts working as soon as you decide on the deployment model and choose whether to enable VASA Provider based on your requirements. See [Register the VASA Provider with a vCenter Server instance](#) for details.

## Content library

A content library in VMware is a container object which stores VM templates, vApp templates, and other types of files. Deployment with content library provides you with a seamless experience as it is not dependent on the network connectivity.



You should store the content library on a shared datastore, such that all hosts in a cluster can access it.

You need to create a content library to store the OVA before deploying the OVA in HA configuration.

Create the content library using the following steps:

### Steps

1. Log in to the vSphere client using `https://vcenterip/ui`
2. Select the horizontal ellipses next to vSphere client and select **Content library**.
3. Select **Create** on the right of the page.
4. Provide a name for the library and create the content library.
5. Navigate to the content library you created.
6. Select **Actions** in the right of the page and select **Import item** and import the OVA file.

# Configuration limits to deploy ONTAP tools for VMware vSphere

You can use the following table as a guide to configure ONTAP tools for VMware vSphere.

Deployment	Type	Number of vVols	Number of hosts	Protocol type
Easy Deployment	Small (S)	~12K	32	NFS, iSCSI
Easy Deployment	Medium (M)	~24K	64	NFS, iSCSI
High-Availability	Small (S)	~24K	64	NFS, iSCSI
High-Availability	Medium (M)	~50k	128	NFS, iSCSI
High-Availability	Large (L)	~100k	256	NFS, iSCSI
[NOTE] The number of hosts in the table shows the total number of host from multiple vCenters.				

For details host system sizing requirements per node, refer to [Prerequisites for deploying ONTAP tools for VMware vSphere](#).

## ONTAP tools for VMware vSphere - Storage Replication Adapter (SRA)

The following table shows the numbers supported per SRM instance using ONTAP tools for VMware vSphere.

vCenter Deployment size	Small	Medium
Total number of virtual machines configured for protection using array-based replication	2000	5000
Total number of array-based replication protection groups	250	250
Total number of protection groups per recovery plan	50	50
Number of replicated datastores	255	255
Number of VMs	4000	7000

The following table shows the number of SRM and the corresponding ONTAP tools for VMware vSphere deployment size.

Number of SRM instances	ONTAP tools deployment Size
Upto 4	Small
4 to 8	Medium

For more information, refer to [Operational Limits of VMware Live Site Recovery](#).

## Prepare to deploy ONTAP tools for VMware vSphere

You should be aware of the basic storage backend requirements, application requirements, and license requirements before you begin deploying ONTAP tools for VMware vSphere.

Plan your deployment in advance and decide how you want to configure ONTAP tools for VMware vSphere in your environment.

### Preparing for deployment

Following are ONTAP tools for VMware vSphere requirements before proceeding with the deployment:

1. Configure and set up your vCenter Server environment.
2. Download the .ova file.
3. (Optional) Used for automation user - Gather the Postman collections JSON file provided by NetApp.
4. Parent vCenter Server Credentials to deploy the OVA. Parent vCenter Server password should not contain these special characters(\$, ', ")
5. Make sure the host or the resource pool where the OVA is deployed has the minimum resources mentioned in the [Prerequisites for deploying ONTAP tools for VMware vSphere](#) section.
6. The login credentials for your vCenter Server instance to which the ONTAP tools for VMware vSphere will connect to post deployment for registration.
7. Delete the browser cache.
8. For non-HA deployment, you need three free IP addresses - one free IP address for load balancer and one free IP address for the Kubernetes control plane and one IP address for node. For HA deployment, along with these three IP addresses you'll need two more IP addresses for second and third nodes. Host names should be mapped to the free IP addresses on the DNS before assigning. All the five IP addresses should be on the same VLAN that is selected for deployment.
9. Content library template once uploaded should not be deleted post deployment as it will be used during reboots.
10. In a multi-vCenter deployment where Custom CA certificates are mandatory, map the Domain Name on which the certificate is issued to the Virtual IP address. Perform a *nslookup* check on the domain name to check whether the domain is getting resolved to the intended IP address. The certificates should be created with domain name and IP address of the load balancer IP address.
11. IPv4/IPv6 supported VLAN - Pure IPV6 is not supported. Mixed mode is supported with VLAN having both IPv6 and IPv4 addresses.
12. NTP Server which is provided to the vCenter Server for time sync.
13. Static IP address Configuration details for the Node or VM where the OVA is being deployed (Mandatory) and other details.
  - a. vCenter Server hostname (vCenter where the OVA is deployed)
  - b. vCenter Server username (vCenter where the OVA is deployed)
  - c. vCenter Server password (vCenter where the OVA is deployed)

- d. Resource pool
  - e. Data LIF (IPv4/IPv6)
  - f. Management LIF
  - g. ONTAP username
  - h. ONTAP password
  - i. SVM name
  - j. Protocol
  - k. Virtual IP addresses for the Kubernetes control plane.
  - l. HA / NON-HA drop down
  - m. List of hostnames
  - n. IP addresses (string)
  - o. Content library name
  - p. OVF template name
  - q. IPv6 gateway (optional)
14. Before installing the ONTAP tools for VMware vSphere 10.1 in non-HA advanced and HA configuration, check the KB article: [Pre-requisites for non-HA advanced and HA configuration](#).

## Deploy non-HA single-node configuration

You can deploy a non-HA single-node configuration in either a small or medium configuration.

- The small non-HA configuration contains 8 CPUs and 16 GB RAM.
- Medium non-HA configuration contains 12 CPUs and 24 GB RAM.

### Before you begin

Make sure the network route is present. Storage data network needs to be accessible from VM management network.

Example: `C1_sti67-vsimsim-ucs154k_1679633108::> network route create -vserver <SVM> -destination 0.0.0.0/0 -gateway <gateway_ip>`

### Steps

1. Log in to the vSphere server.
2. Navigate to the resource pool or the cluster or the host where you want to deploy the OVA.
3. Right-click the required location and select **Deploy OVF template....**



Do not deploy ONTAP tools VMware vSphere virtual machine on a vVols datastore that it manages.

4. You can either enter the URL for the .ova file or browse to the folder where the .ova file is saved, and then select **Next**.
5. Select a name and folder for the virtual machine and select **Next**.

6. Select the host and select **Next**
7. Review the summary of the template and select **Next**.
8. Read and accept the license agreement and select **Next**.
9. In the **Configuration** window, select **Easy deployment(S)**, **Easy deployment(M)**, or **Advanced deployment(S)** or **Advanced deployment(M)** configuration.

The advanced deployment options use Trident as a dynamic storage provisioner for ONTAP to create volumes and the easy deployment uses local storage to create volumes.

10. Select the datastore where you need to deploy the OVA and select **Next**.
11. Select the source and destination network and select **Next**.
12. Select **Customize template > system configuration** window.

System Configuration		8 settings
Application username(*)	Username to assign to the Application	
Application password(*)	Password to assign to the Application <b>Password</b> <input type="password"/> Enter a password to enable authentication. <b>Confirm Password</b> <input type="password"/>	
Enable ASUP	Select this checkbox to enable ASUP <input checked="" type="checkbox"/>	
ASUP Proxy URL	Proxy url ( in case if egress is blocked in datacenter side), through which we can push the asup bundle. <input type="text"/>	
Administrator username(*)	Username to assign to the Administrator. Please use only a letter as the beginning. And only 'a', '!', '@', '!', '!', '!' special characters are supported <input type="text"/>	
Administrator password(*)	Password to assign to the Administrator <b>Password</b> <input type="password"/> Enter a password to enable authentication. <b>Confirm Password</b> <input type="password"/>	
NTP servers	A comma-separated list of hostnames or IP addresses of NTP servers. If left blank, VMware tools based time synchronization will be used <input type="text"/>	
Maintenance user password(*)	Password to assign to maint user account <b>Password</b> <input type="password"/> Enter a password to enable authentication. <b>Confirm Password</b> <input type="password"/>	

Enter the following details:

- .. Application username and password: This username and password is used for registering both VASA provider and SRA in the vCenter Server.
- .. The **Enable ASUP** checkbox is selected by default.

AutoSupport can be enabled or disabled only during deployment.

- .. In the **ASUP Proxy URL** field, provide this URL to avoid firewall blockage for AutoSupport data transmission.
- .. Administrator username and administrator password: This is the password used to log in to ONTAP Tools Manager.
- .. Enter your NTP server information in the **NTP Servers** field.
- .. Maintenance user password: This is used to grant access to 'Maint Console Options'.
- .. In **Customize template > Deployment Configuration** window, enter the following details:

+



Load balancer IP(*)	Load balancer IP (*) eg: 10.0.0.1
Virtual IP for K8s control plane(*)	Provide the virtual IP address for K8s control plane eg: 10.0.0.1
Enable SVM scoping	Ignore when cluster scoping is required <input type="checkbox"/>
Protocol	Internet Small Computer Systems Interface (iSCSI)/Network File System (NFS) NFS
ONTAP/SVM management LIF(*)	Specify the management LIF for trident eg: 172.17.0
ONTAP/SVM data LIF(*)	Specify the data LIF for trident. IPv6gateway field is mandatory if you provide IPv6 address here. Ignored when SVM scoping is enabled
ONTAP/SVM username(*)	Specify the ONTAP cluster username eg: username
ONTAP/SVM password(*)	Specify the ONTAP cluster password Password: ..... Confirm Password: .....
Primary VM	Maintain this field as selected to set the current VM as primary and install the ONTAP tools. <input checked="" type="checkbox"/>

- a. Enter an available IP address in the Virtual IP address for the Kubernetes control plane. You need this for the Kubernetes API Server.
- b. Select **Enable SVM scoping** option when you intend to use the directly added SVM user account. To use ONTAP cluster, do not select the checkbox.



When SVM scope is enabled, you should have already enabled SVM support with management IP address.

- c. Select either NFS or iSCSI in the **Protocol** field.
- d. Enter the ONTAP Cluster or the SVM Management IP address in the **ONTAP/SVM Management LIF** field.
- e. Enter the ONTAP Cluster or the SVM ONTAP/SVM Data LIF. The data LIF should belong to the protocol selected. For example, if iSCSI protocol selected, then an iSCSI data LIF should be provided.
- f. For Storage VM, you can choose to provide your ONTAP's default storage VM details or create a new storage VM. Do not enter the value in **Storage VM** field when Enable SVM scoping is selected as this field is ignored.
- g. Enter the ONTAP/SVM username. ONTAP/SVM username and Password is required for Trident to create volumes for storing the data of services in case of advanced or HA deployment and to recover the data from volumes during node failure.
- h. Enter the ONTAP/SVM Password.
- i. Primary VM is enabled by default. Do not alter this choice.

1. In **Customize template > Node Configuration** window enter the network properties of the OVA.



The information provided here will be validated for proper patterns during installation process. In case of discrepancy, an error message will be displayed on the web console, and you will be prompted to correct any incorrect information provided.

- j. Enter the Host name. Host names that consist of uppercase letters (A-Z), lowercase letters (a-z), digits (0-

9), and the hyphen (-) special character only are supported. If you want to configure dual stack, specify the host name mapped to IPv6 address.

- k. Enter IP address (IPv4) mapped to the host name. In case of dual stack, provide any available IPv4 IP address that is in the same VLAN as the IPv6 address.
- l. Enter the IPv6 address on the deployed network only when you need dual stack.
- m. Specify the prefix length only for IPv6.
- n. Specify the subnet to use on the deployed network in Netmask (only for IPv4) field.
- o. Specify the Gateway on the deployed network.
- p. Specify the Primary DNS server IP address.
- q. Specify the Secondary DNS server IP address.
- r. Specify the Search Domain name to use when resolving the hostname.
- s. Specify the IPv6 gateway on the deployed network only when you need dual stack.
  - 1. Review the details in the **Ready to complete** window, select **Finish**.

As the deployment task gets created, the progress is shown in the vSphere task bar.

- 2. Power on the VM after the completion of the task.

The installation begins. You can track the installation progress in VM's web console.

As part of the installation, node configurations are validated. The inputs provided under different sections under the Customize template in the OVF form are validated. In case of any discrepancies, a dialog prompts you to take corrective action.

- 3. Make necessary changes in the dialog prompt. Use tab button to navigate across the panel to enter your values, **OK** or **Cancel**.
- 4. On selecting **OK**, the values provided would again be validated. ONTAP Tools for VMware allows you three attempts to correct any invalid values. If you are unable to correct issues after three attempts, the product installation stops and you are advised to try the installation on a fresh VM.
- 5. After successful installation, the web console shows the state of ONTAP tools for VMware vSphere.

## Deploy HA configuration

You can configure HA three nodes in either small, medium, or large configurations. HA deployment uses Trident to store the services data.

- Small HA three nodes contain 8 CPUs and 16 GB RAM per node.
- Medium HA three nodes contain 12 CPUs and 24 GB RAM per node.
- Large HA three nodes contain 16 CPUs and 32 GB RAM per node.

### Before you begin

This task gives you instructions on how to install HA three nodes in small, medium, or high configurations.



Creating the content library is a mandatory step for deploying HA three nodes configuration. See [Download ONTAP tools](#) for details. Learn more [Creating and Using Content Library](#).

Make sure you have imported your OVA into your content library. Keep the name of the content library and the

library item name that you have given to your OVA item handy.



Before proceeding with the deployment, set the cluster's Distributed Resource Scheduler (DRS) on the inventory to 'Conservative' during the installation of ONTAP tools. This ensures that VM's do not migrate during the installation.

## Steps

1. To deploy from vSphere server:

- a. Log in to the vSphere server.
- b. Navigate to the resource pool or the host where you want to deploy the OVA and right-click the required location where you want to deploy the VM, and select **Deploy OVF template...**



Do not deploy ONTAP tools VMware vSphere virtual machine on a vVols datastore that it manages.

- c. You can either enter the URL for the .ova file or browse to the folder where the .ova file is saved, and then select **Next**

2. To deploy from content library:

- a. Go to your content library and click on the library item that you want to deploy.
- b. Click on **Actions > New VM from This Template**

3. Select a name and folder for the virtual machine and select **Next**.

4. Select the host and select **Next**

5. Review the summary of the template and select **Next**.

6. Read and accept the license agreement and select **Next**.

7. In the **Configuration window**, select **High-Availability Deployment(S)**, **High-Availability Deployment(M)**, or **High-Availability Deployment(L)** configuration, depending on your requirement.

8. Select the storage for the configuration and disk files, select **Next**.

9. Select the destination network for each source network, select **Next**.

10. Select **Customize template > system configuration** window.

System Configuration		8 settings
Application username(*)	Username to assign to the Application <input type="text"/>	
Application password(*)	Password to assign to the Application <b>Password</b> <input type="password"/> Enter a password to enable authentication. <b>Confirm Password</b> <input type="password"/>	
Enable ASUP	Select this checkbox to enable ASUP <input checked="" type="checkbox"/>	
ASUP Proxy URL	Proxy url (in case if egress is blocked in datacenter side), through which we can push the asup bundle. <input type="text"/>	
Administrator username(*)	Username to assign to the Administrator. Please use only a letter as the beginning. And only '@', '.', '-', '_', ':' special characters are supported <input type="text"/>	
Administrator password(*)	Password to assign to the Administrator <b>Password</b> <input type="password"/> Enter a password to enable authentication. <b>Confirm Password</b> <input type="password"/>	
NTP servers	A comma-separated list of hostnames or IP addresses of NTP servers. If left blank, VMware tools based time synchronization will be used <input type="text"/>	
Maintenance user password(*)	Password to assign to maint user account <b>Password</b> <input type="password"/> Enter a password to enable authentication. <b>Confirm Password</b> <input type="password"/>	

Enter the following details:

- Application username and password: This username and password is used for registering both VASA provider and SRA in the vCenter Server.
- The **Enable AutoSupport** checkbox is selected by default. AutoSupport can be enabled or disabled only during deployment.
- In the **ASUP Proxy URL** field, provide this URL to avoid firewall blockage for AutoSupport data transmission.
- Administrator username and administrator password: This is the password used to log in to ONTAP tools Manager.
- Enter your NTP server information in the **NTP Servers** field.
- Maintenance user password: This is used to grant access to 'Maint Console Options'.

11. In **Customize template > Deployment Configuration** window, enter the following details:

Load balancer IP(*)	Load balancer IP (*) eg: 10.0.0.1
Virtual IP for K8s control plane(*)	Provide the virtual IP address for K8s control plane eg: 10.0.0.1
Enable SVM scoping	Ignore when cluster scoping is required <input type="checkbox"/>
Protocol	Internet Small Computer Systems Interface (iSCSI)/Network File System (NFS) NFS
ONTAP/SVM management LIF(*)	Specify the management LIF for trident eg: 172.17.0
ONTAP/SVM data LIF(*)	Specify the data LIF for trident. IPv6gateway field is mandatory if you provide IPv6 address here. Ignored when SVM scoping is enabled
ONTAP/SVM username(*)	Specify the ONTAP cluster username eg: username
ONTAP/SVM password(*)	Specify the ONTAP cluster password Password: ..... Confirm Password: .....
Primary VM	Maintain this field as selected to set the current VM as primary and install the ONTAP tools. <input checked="" type="checkbox"/>

- a. Enter an available IP address in the Virtual IP address for the Kubernetes control plane. You need this for the Kubernetes API Server.
- b. In the advanced deployment option, select **Enable SVM scoping** option when you intend to use the directly added SVM user account. To use ONTAP cluster, do not select the checkbox.



When SVM scope is enabled you should have already enabled SVM support with management IP address.

- c. Select either NFS or iSCSI in the **Protocol** field.
  - d. Enter the ONTAP Cluster or the SVM Management IP address in the **ONTAP/SVM Management LIF** field.
  - e. Enter the ONTAP Cluster or the SVM ONTAP/SVM Data LIF. The data LIF should belong to the protocol selected. For example, if iSCSI protocol selected, then an iSCSI data LIF should be provided.
  - f. For Storage VM, you can choose to provide your ONTAP's default storage VM details or create a new storage VM. Do not enter the value in **Storage VM** field when Enable SVM scoping is selected as this field is ignored.
  - g. Enter the ONTAP/SVM username. ONTAP/SVM username and Password is required for Trident to create volumes for storing the data of services in case of advanced or HA deployment and to recover the data from volumes during node failure.
  - h. Enter the ONTAP/SVM Password.
  - i. Primary VM is enabled by default. Do not alter this choice.
12. In **Customize template > Content Library Details** window, enter the **Content Library Name** and the **OVF Template Name**.
  13. In **Customize template > vCenter Configuration** window, provide the details of the vCenter Server where the content library is hosted.
  14. In **Customize template > Node Configuration** window, enter the network properties of the OVA for all the three nodes.



The information provided here will be validated for proper patterns during installation process. In the case of discrepancy, an error message will be displayed on the web console and you will be prompted to correct any incorrect information provided.

- a. Enter the host name. Host names that consist of uppercase letters (A-Z), lowercase letters (a-z), digits (0-9), and the hyphen (-) special character only are supported. If you want to configure dual stack, specify the host name mapped to IPv6 address.
  - b. Enter IP address (IPv4) mapped to the host name. In case of dual stack, provide any available IPv4 IP address that is in the same VLAN as the IPv6 address.
  - c. Enter the IPv6 address on the deployed network only when you need dual stack.
  - d. Specify the prefix length only for IPv6.
  - e. Specify the subnet to use on the deployed network in Netmask (only for IPv4) field.
  - f. Specify the Gateway on the deployed network.
  - g. Specify the Primary DNS server IP address.
  - h. Specify the Secondary DNS server IP address.
  - i. Specify the Search Domain name to use when resolving the hostname.
  - j. Specify the IPv6 gateway on the deployed network only when you need dual stack.
15. In **Customize template > Node 2 Configuration** and **Node 3 Configuration** window, enter the following details:
- a. Host name 2 and 3 - Host names that consist of uppercase letters (A-Z), lowercase letters (a-z), digits (0-9), and the hyphen (-) special character only are supported. If you want to configure dual stack, specify the host name mapped to IPv6 address.
  - b. IP address
  - c. IPv6 address
16. Review the details in the **Ready to complete** window, select **Finish**.
- As the deployment task gets created, the progress is shown in the vSphere task bar.
17. Power on the VM after the completion of the task.
- The installation begins. You can track the installation progress in VM's web console. As part of the installation, node configurations are validated. The inputs provided under different sections under the Customize template in the OVF form are validated. In the case of any discrepancies, a dialog prompts you to take corrective action.
18. Make necessary changes in the dialog prompt. Use tab button to navigate across the panel to enter your values, **OK** or **Cancel**.
19. On selecting **OK**, the values provided would again be validated. ONTAP Tools for VMware allows you three attempts to correct any invalid values. If you are unable to correct issues after three attempts, the product installation stops and you are advised to try the installation on a fresh VM.
20. After successful installation, the web console shows the state of ONTAP tools for VMware vSphere.

## Recover your ONTAP tools for VMware vSphere setup

If you lose your ONTAP tools for VMware vSphere setup, you can recover the ONTAP

tools for VMware vSphere setup using the data available in the ONTAP volume data. When you lose the setup, bring down the setup gracefully.



You cannot recover your ONTAP tools for VMware vSphere setup if there are issues with vCenter Server or ONTAP data management software.

## Steps

1. Log in to the vSphere server.
2. Navigate to the resource pool or the node cluster or the host where you want to deploy the OVA.
3. Right-click the required location and select **Deploy OVF template**.
4. You can either enter the URL for the .ova file or browse to the folder where the .ova file is saved, and then select **Next**.



You should use the same OVA build that you used for installing the recovery setup.

5. Select a name and folder for the virtual machine and select **Next**.
6. Select the host and select **Next**.
7. Review the summary of the template and select **Next**.
8. Read and accept the license agreement and select **Next**.
9. In the **Configuration** window, select **Recovery** option.
10. In the **Select storage** window, select the storage for the configurations and disk files.
11. In the **Select networks** window, select a destination network for each source network.



You need to retain the load balancer IP address and the Kubernetes API Server IP address. You can change the node IP address or you can retain the same IP address.

12. Select **Customize template > system configuration** window. Enter the following details:
  - a. Application username and password: This username and password is used for registering both VASA provider and SRA in the vCenter Server. This can be different from the username and password provided during initial deployment.
  - b. The **Enable ASUP** checkbox is selected by default.

AutoSupport can be enabled or disabled only during deployment.

.. In the **ASUP Proxy URL** field, provide this URL to avoid firewall blockage for AutoSupport data transmission.

.. Administrator username and administrator password: This is the password used to log in to ONTAP Tools Manager. This can be different from the username and password provided during initial deployment.

.. Enter your NTP server information in the **NTP Servers** field.

.. Maintenance user password: This is used to grant access to maintenance console options.

. In **Customize template > Deployment Configuration** window, enter the details provided during deployment.

All the values in this section should be the same as the ones provided during initial deployment with the exception of data LIF value.



- The storage SVM name should not be changed as that is where the recovery data is stored. This applies to directly added SVM user account as well.
- . In the case of HA-deployment recovery, provide the following details:
    - .. Content library details.
    - .. vCenter configuration details.
  - . In **Customize template > Node Configuration** window enter the details as per the set up you're trying to recover, non-HA or HA setup.
  - . Review the details in the **Ready to complete** window, select **Finish**.

+

As the deployment task gets created, the progress is shown in the vSphere task bar.

- . Power on the VM after the completion of the task.

+

The installation begins. You can track the installation progress in VM's web console. As part of the installation, node configurations are validated. The inputs provided under different sections under the Customize template in the OVF form are validated. In case of any discrepancies, a dialog prompts you to take corrective action.

- . Make necessary changes in the dialog prompt. Use tab button to navigate across the panel to enter your values, **OK** or **Cancel**.
- . On selecting **OK** or **Cancel**, the values provided would again be validated. ONTAP Tools for VMware allows you three attempts to correct any invalid values. If you are unable to correct issues after three attempts, the product installation stops and you are advised to try the installation on a fresh VM.
- . After successful installation, the web console shows the state of ONTAP tools for VMware vSphere. After successful installation, you should manually edit the hardware requirements as per the guidelines in the [Prerequisites for deploying ONTAP tools for VMware vSphere](#) page.

## Deployment error codes

You might encounter error codes during ONTAP tools for VMware vSphere deployment, reboot, and recovery operations.

The error codes are five digits long, where the first two digits represent the script that encountered the issue, and the last three digits represent the specific workflow within that script.

All error logs are recorded in the ansible-perl-errors.log file to facilitate easy tracking and resolution of issues. This log file contains the error code and the failed Ansible task.



The error codes provided on this page are for reference only. Contact the support team if error persists or if there's no resolution mentioned.

The following table lists the error codes and the corresponding file names.

Error code	Script name
00	firstboot-network-config.pl, mode deploy
01	firstboot-network-config.pl, mode upgrade
02	firstboot-inputs-validation.pl
03	firstboot-deploy-otv-ng.pl, deploy, ha



04	firstboot-deploy-otv-ng.pl, deploy, non-ha
05	firstboot-deploy-otv-ng.pl, reboot
06	firstboot-deploy-otv-ng.pl, upgrade, ha
07	firstboot-deploy-otv-ng.pl, upgrade, non-ha
08	firstboot-otv-recovery.pl

The last three digits of the error code indicate the specific workflow error within the script:

Deployment error code	Workflow	Resolution
050	Ssh Key generation failed	Restart the primary virtual machine (VM).
051	Failed deploying secondary VMs	<p>* If the second and third VMs are created, then ensure that enough CPU/memory resources are available before you power on the secondary VMs and restart the primary VM.</p> <p>* If the second and third VMs are in deploy ONTAP tools for VMware vSphere template task, wait for the task to be completed, power on the VMs and reboot the primary VM.</p> <p>* Redeploy.</p>
052	Copy SSH Keys failed	Restart the primary VM.
053	Failed installing RKE2	Either run the following and restart the primary VM or redeploy: sudo rke2-killall.sh (all VMs) sudo rke2-uninstall.sh (all VMs).
054	Failed setting kubeconfig	Redeploy
055	Failed deploying registry	If the registry pod is present, wait for the pod to be ready then restart the primary VM or else redeploy.
056	Login iSCSI has failed	Make sure that iSCSI protocol is enabled and configured properly on ONTAP. Ensure that the iSCSI Data LIF IP address provided is correct and online. Restart the VM if previous points are correct. Else, redeploy.

057	Trident deployment has failed	<p>*Ensure Management LIF and Data LIF IP addresses are reachable from VM.</p> <p>*Ensure NFS or iSCSI protocol is enabled and configured properly on ONTAP.</p> <p>*Ensure that the NFS/iSCSI Data LIF IP address provided is correct and online.</p> <p>*Ensure that the user name and password provided are correct and the user has sufficient privileges to create volume.</p> <p>* Restart if all the above points are correct. Else, redeploy.</p>
058	Trident import has failed	<p>*Ensure that the user name and password provided are correct and the user has sufficient privileges to create, mount, clone, and delete volumes.</p> <p>*Ensure that the same ONTAP setup is used to recover the setup and retry recovery.</p>
059	KubeVip deployment has failed	<p>Ensure virtual IP address for Kubernetes control plane and load balancer IP address provided during deployment belong to same VLAN and are free IP addresses. Restart if all the previous points are correct. Else, redeploy.</p>
060	Operator deployment has failed	Restart
061	Services deployment has failed	<p>Perform basic Kubernetes debugging like get pods, get rs, get svc, and so on in ntv-system namespace for more details and error logs at /var/log/ansible-perl-errors.log and /var/log/ansible-run.log and redeploy.</p>
062	VASA Provider and SRA deployment has failed	<p>Refer to the error logs at /var/log/ansible-perl-errors.log for more details and redeploy.</p>
064	version.xml verification failed	Redeploy
065	Swagger page URL is not reachable	Redeploy

066	Post deployment steps failed	-
088	Configuring log rotate for journald has failed	Restart the primary VM.
089	Changing ownership of summary log rotate config file has failed	Restart the primary VM.

Reboot error code	Workflow
067	Waiting for rke2-server timed out
101	Failed to Reset Maint/Console user password
102	Failed to Delete password file during reset Maint/Console user password
103	Failed to Update New Maint/Console user password in vault

Recovery error code	Workflow	Resolution
104	Post recovery steps have failed.	-
105	Copying contents to recovery volume has failed.	-
106	Failed to mount recovery volume.	<p>* Ensure that the same SVM is used and recovery volume is present in the SVM. (Recovery volume name starts with otvng_trident_recovery)</p> <p>* Ensure Management LIF and Data LIF IP addresses are reachable from VM.</p> <p>* Ensure NFS/iSCSI protocol is enabled and configured properly on ONTAP.</p> <p>* Ensure that the NFS/iSCSI Data LIF IP address provided is correct and online.</p> <p>* Ensure that the username, password, protocol provided are correct and the user has sufficient privileges to create, mount, clone, delete.</p> <p>* Retry the recovery</p>

# Configure ONTAP tools

## ONTAP tools Manager user interface

ONTAP tools for VMware vSphere is a multi-tenant system that can manage multiple vCenter Server instances. ONTAP tools Manager provides more control to the ONTAP tools for VMware vSphere administrator over the managed vCenter Server instances and onboarded storage backends.

ONTAP tools Manager helps in:

- vCenter Server instance management - Add and manage vCenter Server instances to ONTAP tools.
- Storage backend management - Add and manage ONTAP storage clusters to ONTAP tools for VMware vSphere and map them to onboarded vCenter Server instances globally.
- Log bundle downloads - Collect log files for ONTAP tools for VMware vSphere.
- Certificate management - Change the self-signed certificate to a custom CA certificate and renew or refresh all certificates.
- Password management - Reset OVA application password for the user.

To access ONTAP tools Manager, launch <https://loadBalanceIP:8443/virtualization/ui/> from the browser and login with the ONTAP tools for VMware vSphere administrator credentials you provided during deployment.

## Add and manage vCenter Server instances

vCenter Server provides the central management platform that allows you to control hosts, virtual machines (VMs), and storage backends.

### Add a vCenter Server instance

#### About this task

You can add and manage multiple vCenter Server instances with one instance of ONTAP tools for VMware vSphere.

#### Steps

1. Launch ONTAP tools Manager from a web browser:  
<https://loadBalanceIP:8443/virtualization/ui/>
2. Log in with the ONTAP tools for VMware vSphere administrator credentials you provided during deployment.
3. Select **vCenters** from the sidebar.
4. Select **Add** to onboard vCenter Server instances and provide your vCenter IP address/hostname, username, password, and port details.

When you add a vCenter Server instance to ONTAP tools, the following actions are performed automatically:

- The vCenter Client Plug-in is registered
- Custom privileges for the plug-ins and APIs are pushed to the vCenter Server instance
- Custom roles are created to manage the users.

## Register ONTAP tools for VMware vSphere plug-in with vCenter Server instance

When you add a vCenter Server instance, ONTAP tools for VMware vSphere plug-in is registered automatically to vCenter Server as a remote plug-in. The plug-in is visible on the vSphere user interface shortcuts.

The plug-in is registered with a key *com.netapp.otv* to the vCenter Server instance and can be seen in the ExtensionManager of the vCenter Server instance.

## Unregister ONTAP tools for VMware vSphere plug-in

You can unregister the ONTAP tools for VMware vSphere Plug-in from a vCenter Server instance using the following steps.

### Steps

1. Launch ONTAP tools Manager from a web browser:  
`https://loadBalanceIP:8443/virtualization/ui/`
2. Log in with the ONTAP tools for VMware vSphere administrator credentials you provided during deployment.
3. Select vCenters from the sidebar.
4. Click on the vertical ellipses against the vCenter you want to remove and select the **Remove** option.



You cannot remove a vCenter Server instance if there is a storage mapping attached to it. You need to remove the mapping before removing the vCenter Server instance.

When you remove vCenter Server instances in ONTAP tools, the following actions are performed automatically:

- Plug-in is unregistered.
- Plug-in privileges and plug-in roles are removed.

## Register the VASA Provider with a vCenter Server instance

You can register and unregister the VASA provider with a vCenter Server instance using ONTAP tools for VMware vSphere remote plugin interface.

VASA Provider Settings section shows the VASA Provider registration state for the selected vCenter Server.

### Steps

1. Log in to the vSphere client using `https://vcenterip/ui`
2. In the shortcuts page, click on **NetApp ONTAP tools** under the plug-ins section.
3. Select **Settings > VASA provider settings**. VASA provider registration state shows as not registered.

4. Click on **REGISTER** button to register the VASA Provider.
5. Enter a name for the VASA provider and provide ONTAP tools for VMware vSphere application user credentials and click **REGISTER**.
6. On successful registration and page refresh, UI shows the state, name, and version of the registered VASA provider. The unregister action is activated.
7. If you want to unregister the VASA provider, perform the following steps:
  - a. To unregister the VASA provider select **Unregister** option at the bottom of the screen.
  - b. In the **Unregister VASA provider** page, you can see the name of the VASA provider. In this page provide the application user credentials and click **Unregister**.

## Verify registered VASA provider

Verify that the onboarded VASA provider is listed under VASA Provider from vCenter client UI and from remote plug-in UI.

### Steps

1. To verify VASA Provider from vCenter client UI follow these steps:
  - a. Navigate to vCenter Server.
  - b. Log in with the administrator credentials.
  - c. Select **Storage Providers**.
  - d. Select **Configure**.
  - e. Under Storage Provider/storage backends verify that the onboarded VASA provider is listed correctly.
2. To verify VASA Provider from the remote plug-in UI follow these steps:
  - a. Log in to the vSphere client using `https://vcenterip/ui`
  - b. In the shortcuts page, click on **NetApp ONTAP tools** under the plug-ins section.
  - c. You can see the registered VASA Provider in the overview page and in the **Settings > VASA provider settings** page.

## Install the NFS VAAI plug-in

You can install the NetApp NFS Plug-in for VMware vStorage APIs for Array Integration (VAAI) using ONTAP tools for VMware vSphere.

### What you will need

- You should have downloaded the installation package for the NFS Plug-in for VAAI (.vib) from the NetApp Support Site. [NetApp NFS Plug-in for VMware VAAI](#)
- You should have installed ESXi host 7.0U3 latest patch as minimum version and ONTAP 9.12.1Px (latest P release) 9.13.1Px, 9.14.1Px, or later.
- You should have powered on the ESXi host and mounted an NFS datastore.
- You should have set the values of the `DataMover.HardwareAcceleratedMove`, `DataMover.HardwareAcceleratedInit`, and `VMFS3.HardwareAcceleratedLocking` host settings to "1".

These values are set automatically on the ESXi host when the Recommended Settings dialog box is updated.

- You should have enabled the vstorage option on the storage virtual machine (SVM) by using the `vserver nfs modify -vserver vserver_name -vstorage enabled` command.
- You should have ESXi 7.0U3 or later if you are using NetApp NFS VAAI plug-in 2.0.
- You should have the vSphere 7.0U3 latest patch releases as vSphere 6.5 has been deprecated.
- vSphere 8.x is supported with the NetApp NFS VAAI plug-in 2.0.1(build 16).

## Steps

1. Click **Settings** from the ONTAP tools for VMware vSphere home page.
2. Click **NFS VAAI Tools** tab.
3. When the VAAI plug-in is uploaded to vCenter Server, select **Change** in the **Existing version** section. If a VAAI plug-in is not uploaded to the vCenter Server, select **Upload** button.
4. Browse and select the `.vib` file, and then click **Upload** to upload the file to ONTAP tools.
5. Click **Install on ESXi host**, select the ESXi host on which you want to install the NFS VAAI plug-in, and then click **Install**.

Only the ESXi hosts that are eligible for the plug-in installation are displayed. You should follow the on-screen instructions to complete the installation. You can monitor the installation progress in the Recent Tasks section of vSphere Web Client.

6. You should manually reboot the ESXi host after the installation finishes.

When the VMware admin reboots the ESXi host, ONTAP tools for VMware vSphere automatically detect the NFS VAAI plug-in. You do not have to perform additional steps to enable the plug-in.

## Update host data

You can run an on-demand discovery on the ESXi host to get the latest updates on the storage data.

### Steps

1. From the VMware vSphere Web Client home page, click **Hosts and Clusters**.
2. Right-click a host, and then select **NetApp ONTAP tools > Update host data**.
3. In the **Update Host Data** pop-up window, select **Yes** to restart the discovery of all connected storage systems.

## Configure ESXi host settings

### Configure ESXi server multipath and timeout settings

ONTAP tools for VMware vSphere checks and sets the ESXi host multipath settings and HBA timeout settings that work best with NetApp storage systems.

## About this task

This process might take a long time, depending on your configuration and system load. The task progress is displayed in the Recent Tasks panel. As the tasks are completed, the host status Alert icon is replaced by the Normal icon or the Pending Reboot icon.

## Steps

1. From the VMware vSphere Web Client home page, click **Hosts and Clusters**.
2. Right-click a host, and then select **NetApp ONTAP tools > Update host data**.
3. In the shortcuts page, click on **NetApp ONTAP tools** under the plug-ins section.
4. Go to ESXi Host compliance card in the Overview (Dashboard) of the ONTAP tools for VMware vSphere plug-in.
5. Select **Apply Recommended Settings** link.
6. In the **Apply recommended host settings** window, select the hosts that you want to comply with NetApp recommended host settings and click **Next**.



You can expand the ESXi host to see the current values.

7. In the settings page, select the recommended values as required.
8. In the summary pane, check the values and click **Finish**.  
You can track the progress in the Recent task panel.

## Set ESXi host values

You can set timeouts and other values on the ESXi hosts using ONTAP tools for VMware vSphere to ensure best performance and successful failover. The values that ONTAP tools for VMware vSphere sets are based on internal NetApp testing.

You can set the following values on an ESXi host:

### HBA/CNA Adapter Settings

Sets the recommended HBA timeout settings for NetApp storage systems.

- **Disk.QFullSampleSize**

Set this value to 32 for all configurations. Setting this value helps to prevent I/O errors.

- **Disk.QFullThreshold**

Set this value to 8 for all configurations. Setting this value helps prevent I/O errors.

- **Emulex FC HBA timeouts**

Use the default value.

- **QLogic FC HBA timeouts**

Use the default value.



## MPIO Settings

MPIO settings define preferred paths for NetApp storage systems. The MPIO settings determine which of the available paths are optimized (as opposed to non-optimized paths that traverse the interconnect cable) and they set the preferred path to one of those paths.

In high-performance environments, or when you are testing performance with a single LUN datastore, consider changing the load balance setting of the round-robin (VMW\_PSP\_RR) path selection policy (PSP) from the default IOPS setting of 1000 to a value of 1.

## NFS settings

- **Net.TcpipHeapSize**

Set this value to 32.

- **Net.TcpipHeapMax**

Set this value to 1024MB.

- **NFS.MaxVolumes**

Set this value to 256.

- **NFS41.MaxVolumes**

Set this value to 256.

- **NFS.MaxQueueDepth**

Set this value to 128 or higher to avoid queuing bottlenecks.

- **NFS.HeartbeatMaxFailures**

Set this value to 10 for all NFS configurations.

- **NFS.HeartbeatFrequency**

Set this value to 12 for all NFS configurations.

- **NFS.HeartbeatTimeout**

Set this value to 5 for all NFS configurations.

## Discover storage systems and hosts

When you first run ONTAP tools for VMware vSphere in a vSphere Client, ONTAP tools discovers the ESXi hosts, their LUNs and NFS exports, and the NetApp storage systems that own those LUNs and exports.

### What you will need

- All the ESXi hosts should be powered on and connected.

- All the storage virtual machines (SVMs) to be discovered should be running, and each cluster node should have at least one data LIF configured for the storage protocol in use (NFS or iSCSI).

### About this task

You can discover new storage systems or update information about existing storage systems to obtain the latest capacity and configuration information at any time. You can also modify the credentials that ONTAP tools for VMware vSphere uses to log in to the storage systems.

While discovering the storage systems, ONTAP tools for VMware vSphere collects information from the ESXi hosts that are managed by the vCenter Server instance.

### Steps

1. From the vSphere Client home page, select **Hosts and Clusters**.
2. Right-click the required datacenter, and then select **NetApp ONTAP tools > Update Host Data**.

ONTAP tools for VMware vSphere displays a **Confirm** dialog box with the following message:

"This action will restart the discovery of all connected storage systems and might take a few minutes. Do you want to continue?"

3. Click **Yes**.
4. Select the discovered storage controllers that have the status `Authentication Failure`, and then click **Actions > Modify**.
5. Fill in the required information in the **Modify Storage System** dialog box.
6. Repeat steps 4 and 5 for all storage controllers with `Authentication Failure` status.

After the discovery process is complete, perform the following actions:

- Use ONTAP tools for VMware vSphere to configure ESXi host settings for hosts that display the Alert icon in the Adapter Settings column, the MPIO Settings column, or the NFS Settings column.
- Provide the storage system credentials.

## Add a storage backend

Storage backends are systems that the ESXi hosts use for data storage.

### About this task

This task helps you to onboard an ONTAP cluster. When you add storage backend using ONTAP tools Manager, the storage backend is added to the global cluster. Associate the global cluster with a vCenter Server instance to enable an SVM user for vVols datastore provisioning.



When you add a storage backend using the vSphere client UI, vVols datastore does not support adding of an SVM user directly.

### Add storage backend using ONTAP tools Manager



A storage backend is global when added from ONTAP tools Manager or the ONTAP tools APIs. A storage backend is local when added from the vCenter Server APIs. For example, in a multi-tenant setup, you can add a storage backend (cluster) globally and SVM locally to use SVM user credentials.

## Steps

1. Launch ONTAP tools Manager from a web browser:  
`https://loadBalanceIP:8443/virtualization/ui/`
2. Log in with the ONTAP tools for VMware vSphere administrator credentials you provided during deployment.
3. Select **Storage Backends** from the sidebar.
4. Select **Add**.
5. Provide the Server IP address or FQDN, username, and password details and select **Add**.



IPV4 and IPV6 management LIFs are supported. SVM user-based credentials with management LIFs are also supported.

## Add storage backend using vSphere client UI:

1. Log in to the vSphere client using `https://vcenterip/ui`
2. In the shortcuts page, click on **NetApp ONTAP tools** under the plug-ins section.
3. In the left pane of ONTAP tools, navigate to **Storage Backends** and select **Add**.
4. In the **Add Storage Backend** window, provide the Server IP address, username, password, and port details and click **Add**.



You can add cluster-based credentials and IPV4 and IPV6 management LIFs or provide SVM-based credentials with management LIF of SVM to add an SVM user directly.

The list gets refreshed, and you can see the newly added storage backend in the list.

## Associate a storage backend with a vCenter Server instance

The vCenter Server listing page shows the associated number of storage backends. Each vCenter Server instance has the option to associate a storage backend.

### About this task

This task helps you to create mapping between storage backend and the onboarded vCenter Server instance globally.

## Steps

1. Launch ONTAP tools Manager from a web browser:  
`https://loadBalanceIP:8443/virtualization/ui/`
2. Log in with the ONTAP tools for VMware vSphere administrator credentials you provided during deployment.

3. Select vCenter from the sidebar.
4. Click on the vertical ellipses against the vCenter that you want to associate with storage backends.
5. Select storage backend from the dropdown in the pop up.
6. Select **Associate Storage Backend** option to associate vCenter Server instance with the required storage backend.

## Configure network access

When you have multiple ESXi host IP addresses, all the discovered IP addresses from the host are added to an export policy by default. If you do not want to add all IP addresses to an export policy, provide a setting for allowing specific IP addresses in a comma separated list or range or CIDR, or a combination of all three for each vCenter.

You can choose to allow a few specific ESXi host addresses for datastore mount operation. If the setting is not provided, the export policy adds all IP addresses discovered in the pre-mount step. If the setting is provided, ONTAP tools for VMware vSphere add only the ones which fall within the listed IP addresses or range. If none of the IP addresses of a host belong to the listed IP addresses, the mount on that host fails.

### Steps

1. Log in to the vSphere client using `https://vcenterip/ui`
2. In the shortcuts page, click on **NetApp ONTAP tools** under the plug-ins section.
3. In the left pane of ONTAP tools, navigate to **Settings > Manage Network Access > Edit**.

Use a comma (,) to separate the IP addresses. You can specify a specific IP address, or a range of IP addresses or IPv6 addresses.

4. Click **Save**.

## Configure ONTAP user roles and privileges

You can configure new user roles and privileges for managing storage backends using the JSON file provided with ONTAP tools for VMware vSphere and ONTAP System Manager.

### What you'll need

- You should have downloaded the ONTAP privileges file from ONTAP tools for VMware vSphere using `https://<loadbalancerIP>:8443/virtualization/user-privileges/users_roles.zip`.
- You should have downloaded the ONTAP Privileges file from ONTAP tools using `https://<loadbalancerIP>:8443/virtualization/user-privileges/users_roles.zip`.



You can create users at cluster or directly at storage virtual machines (SVMs) level. You can also create users without using the `user_roles.json` file and if done so, you need to have a minimum set of privileges at SVM level.

- You should have logged in with administrator privileges for the storage backend.

### Steps

1. Extract the downloaded `https://<loadbalancerIP>:8443/virtualization/user-privileges/users_roles.zip` file.
2. Access ONTAP System Manager using the cluster management IP address of the cluster.
3. Log in as the cluster or SVM user.
4. Select **Cluster > Settings > Users and Roles** pane.
5. Select **Add** under Users.
6. In the **Add User** dialog box, select **Virtualization products**.
7. **Browse** to select and upload the ONTAP Privileges JSON file.

The Product field is auto populated.

8. Select the required capability from the product capability drop-down menu.

The **Role** field is auto populated based on the product capability selected.

9. Enter the required username and password.
10. Select the privileges (Discovery, Create Storage, Modify Storage, Destroy Storage, NAS/SAN Role) required for the user, and then click **Add**.

The new role and user are added, and you can see the detailed privileges under the role that you have configured.



The uninstall operation does not remove ONTAP tool roles but removes the localized names for the ONTAP tool specific privileges and appends the prefix `xxx missing privilege` to them. When you reinstall ONTAP tools for VMware vSphere or upgrade to a newer version, all the standard ONTAP tools for VMware vSphere roles and ONTAP tools-specific privileges are restored.

## SVM aggregate mapping requirements

To use SVM user credentials for provisioning datastores, internally ONTAP tools for VMware vSphere creates volumes on the aggregate specified in the datastores POST API. The ONTAP does not allow the creation of volumes on unmapped aggregates on an SVM using SVM user credentials. To resolve this, you need to map the SVMs with the aggregates using the ONTAP REST API or CLI as described here.

REST API:

```
PATCH "/api/svm/svms/f16f0935-5281-11e8-b94d-005056b46485"
'{"aggregates":{"name":["aggr1","aggr2","aggr3"]}}'
```

ONTAP CLI:

```
still15_vsim_ucs630f_aggr1 vserver show-aggregates
AvailableVserver      Aggregate      State      Size Type      SnapLock
Type-----
-----svm_test      still15_vsim_ucs630f_aggr1
online      10.11GB vmdisk  non-snaplock
```

## Create ONTAP user and role manually

Follow the instructions in this section to create the user and roles manually without using the JSON file.

1. Access ONTAP System Manager using the cluster management IP address of the cluster.
2. Log in as the cluster or SVM user.
3. Select **Cluster > Settings > Users and Roles** pane.
4. Create Roles:
  - a. Select **Add** under **Roles** table.
  - b. Enter the **Role name** and **Role Attributes** details.

Add the **REST API Path** and the respective access from the drop down.

- c. Add all the needed APIs and save the changes.
5. Create Users:
    - a. Select **Add** under **Users** table.
    - b. In the **Add User** dialog box, select **System Manager**.
    - c. Enter the **Username**.
    - d. Select **Role** from the options created in the **Create Roles** step above.
    - e. Enter the applications to give access to and the authentication method. ONTAPI and HTTP are the required applications, and the authentication type is **Password**.
    - f. Set the **Password for the User** and **Save** the user.

## List of minimum privileges required for non-admin global scoped cluster user

The minimum privileges required for non-admin global scoped cluster user created without using the users JSON file are listed in this section.

If a cluster is added in local scope, it is recommended to use the JSON file to create the users, as ONTAP tools for VMware vSphere requires more than just the Read privileges for provisioning on ONTAP.

Using APIs:

API	Access level	Used for
/api/cluster	Read-Only	Cluster Configuration Discovery
/api/cluster/licensing/licenses	Read-Only	License Check for Protocol specific licenses
/api/cluster/nodes	Read-Only	Platform type discovery
/api/storage/aggregates	Read-Only	Aggregate space check during Datastore/Volume provisioning
/api/storage/cluster	Read-Only	To get the Cluster level Space and Efficiency Data
/api/storage/disks	Read-Only	To get the Disks associated in an Aggregate
/api/storage/qos/policies	Read/Create/Modify	QoS and VM Policy management

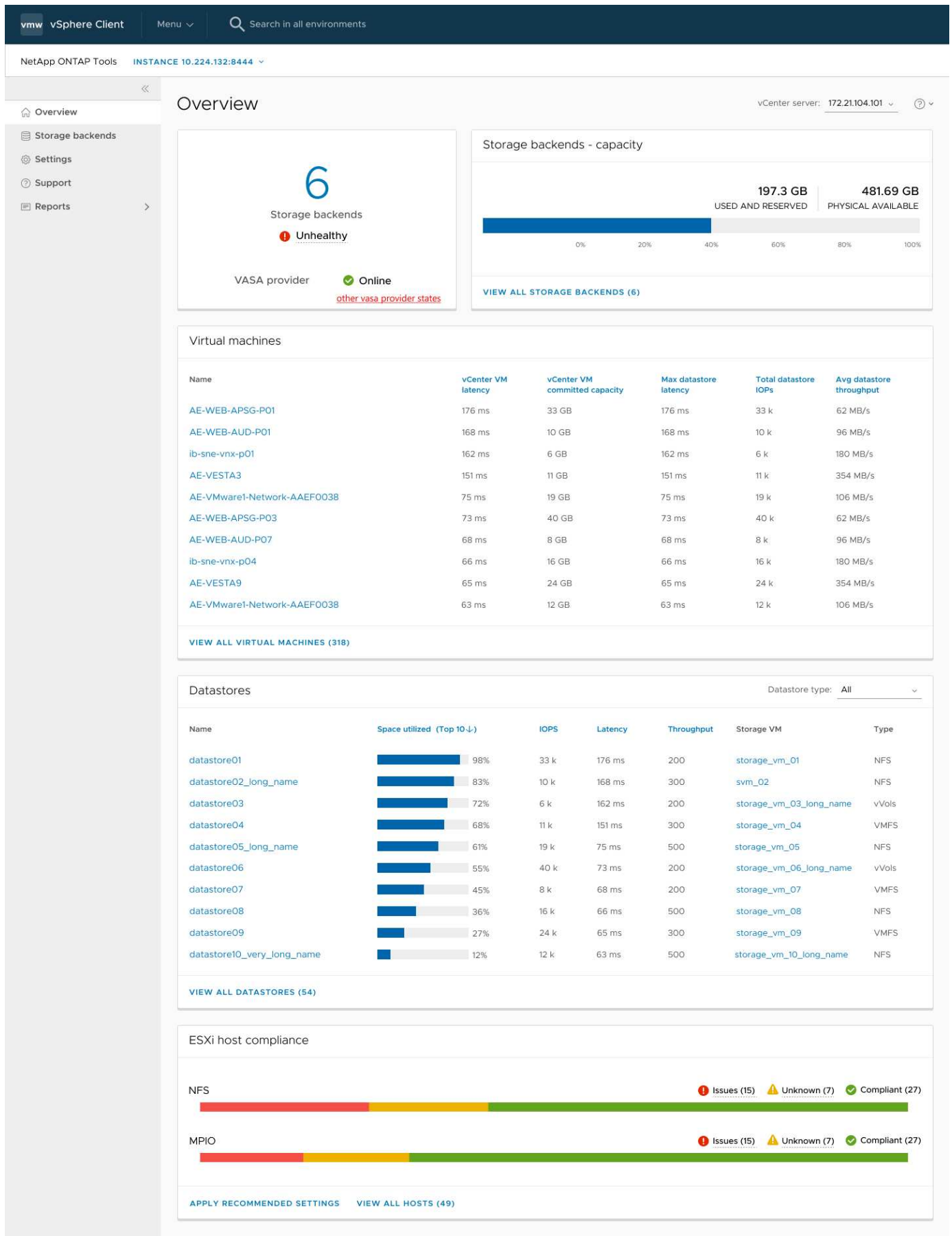
/api/svm/svms	Read-Only	To get SVM configuration in the case the Cluster is added locally.
/api/network/ip/interfaces	Read-Only	Add Storage Backend - To identify the management LIF scope is Cluster/SVM
/api	Read-Only	Cluster users should have this privilege to get the correct storage backend status. Otherwise, ONTAP tools Manager shows "unknown" storage backend status.

## NetApp ONTAP tools for VMware vSphere plug-in Dashboard overview

When you select the NetApp ONTAP tools for VMware vSphere plug-in icon in the shortcuts section on the vCenter client, the user interface navigates to the overview page. This page acts like the dashboard providing you the summary of the ONTAP tools for VMware vSphere plug-in.

In the case of Enhanced Linked Mode setup (ELM), the vCenter Server select dropdown appears and you can select a desired vCenter Server to see the data relevant to it. This dropdown is available for all the other listing views of the plugin.

vCenter Server selection made in one page persists across the tabs of the plug-in.



The dashboard has several cards showing different elements of the system. The following table shows the



different cards and what they represent.

Card name	Description
Status	<p>The Status card shows the number of storage backends added and the overall health status of storage backends and VASA Provider status of a vCenter.</p> <p>Storage backends status shows as "Healthy" when all the storage backends status is normal. Storage backends status shows as "Unhealthy" if any one of the storage backends have an issue (Unknown/Unreachable/Degraded status).</p> <p>When you click on the "Unhealthy" status, a tool tip opens with the status of the storage backends. You can click on any storage backend for more details.</p> <p>Other VASA Provider (VP) states link shows the current state of the VP that is registered in the vCenter Server.</p>
Storage Backends - Capacity	<p>This card shows the aggregated used and available capacity of all storage backends for the selected vCenter Server instance.</p>
Virtual machines	<p>This card shows the top 10 VMs sorted by performance metric. You can click on the header to get the top 10 VMs for the selected metric sorted by either ascending or descending order. The sorting and filtering changes made on the card persists until you change or clear the browser cache.</p>
Datastores	<p>This card shows the Top 10 datastores sorted by a performance metric. You can click on the header to get the top 10 datastores for the selected metric sorted by either ascending or descending order. The sorting and filtering changes made on the card persists until you change or clear the browser cache. There is a Datastore type drop-down to select the type of the datastores - NFS, VMFS, or vVols.</p>
ESXi Host compliance card	<p>This card shows overall compliance status of all ESXi Hosts (for the selected vCenter) settings with respect to the recommended NetApp host settings by settings group/category. You can click on Apply Recommended Settings link to apply the recommended settings. You can click on issues/unknown to see the list of hosts.</p>

## Create a datastore

When you create a datastore at host cluster level, the datastore is created and mounted

on all the hosts of the destination and the action is enabled only if the current user has privilege to execute.

The create Datastore action wizard supports creation of NFS, VMFS, and vVols datastore.

## Create a vVols datastore

You can create a vVols datastore with either new volumes or existing volumes. You cannot create vVols datastore with the mix of existing and new volumes.



Check to ensure root aggregates are not mapped to SVM.

### Before you begin

Ensure that VASA provider is registered with the selected vCenter.

### Steps

1. Log in to the vSphere client using `https://vcenterip/ui`
2. Right-click a host system or a host cluster or a datacenter, and then select **NetApp ONTAP tools > Create Datastore**.
3. In the **Type** pane, select vVols in **Datastore Type**.
4. In the **Name and Protocol** pane, provide **Datastore name** and **Protocol** information.
5. In the **Storage** pane, select **Platform** and **storage VM**. In the **Advanced options** section, select custom export policy (for NFS protocol) or custom initiator group name (for iSCSI protocol) as applicable.
  - Platform and asymmetric options help you to filter out the SVMs dropdown options. You should select the SVM to create or use the volume(s) for datastore creation.
  - The **Asymmetric** toggle button is visible only if iSCSI was selected in the previous step and performance or capacity is selected in the platform drop-down.
  - Select the **Asymmetric** toggle button for AFF platform and disable it for ASA platform.
6. In the **Storage attributes** pane, you can either create new volumes or use the existing volumes. When creating new volume, you can enable QoS on the datastore.
7. Review your selection in the **Summary** pane and click **Finish**.  
The vVols Datastore is created and mounted on all the hosts.

## Create an NFS datastore

A VMware Network File System (NFS) datastore uses the NFS protocol to connect ESXi hosts to a shared storage device over a network. NFS datastores are commonly used in VMware vSphere environments and offer several advantages, such as simplicity and flexibility.

### Steps

1. Log in to the vSphere client using `https://vcenterip/ui`
2. Right-click a Host System or a Host Cluster or a Datacenter, and then select **NetApp ONTAP tools > Create Datastore**.
3. In the **Type** pane, select NFS in **Datastore Type**.
4. In the **Name and Protocol** pane, enter datastore name, size, and protocol information. In the advanced options, select **Datastore cluster** and **Kerberos Authentication**.



Kerberos Authentication is available only when the NFS 4.1 protocol is selected.

5. In the **Storage** pane, select **Platform** and **Storage VM**. You can select **custom Export Policy** in the **Advanced Option** section.
  - **Asymmetric** toggle button is visible only if performance or capacity is selected in the platform drop-down.
  - **Any** option in the platform dropdown enables you to see all the SVMs that are part of the vCenter irrespective of the platform or asymmetric flag.
6. In the **Storage Attributes** pane, select the aggregate for creation of volume. In the advanced options choose **Space Reserve** and **Enable QoS** as required.
7. Review the selections in the **Summary** pane and click **Finish**.

The NFS datastore is created and mounted on all the hosts.

## Create a VMFS datastore

Virtual Machine File System (VMFS) is a clustered file system specifically designed for storing virtual machine files in VMware vSphere environments. It allows multiple ESXi hosts to access the same virtual machine files concurrently, enabling features like vMotion and High Availability.

### Steps

1. Log in to the vSphere client using `https://vcenterip/ui`
2. Right-click a Host System or a Host Cluster or a Datastore, and then select **NetApp ONTAP tools > Create Datastore**.
3. In the **Type** pane, select VMFS in **Datastore Type**.
4. In the **Name and Protocol** pane, enter the datastore name, size, and protocol information. In the **Advanced options** section of the pane, select the Datastore cluster you want to add this datastore to.
5. Select Platform and storage VM in the Storage pane. Select the Asymmetric toggle button. Provide the **Custom initiator group name** in the **Advanced options** section of the pane (optional). You can either choose an existing igroup for the datastore or create a new igroup with a custom name.

If you choose the **Any** option in the platform dropdown you can see all the SVMs that are part of the vCenter irrespective of the platform or asymmetric flag.

6. From the storage attributes pane, select **Aggregate** from the drop-down menu. Select **Space Reserve**, **Use existing volume**, and **Enable QoS** options as required from the **Advanced options** section and provide the details as required.
7. Review the datastore details in the **Summary** pane and click **Finish**.  
The VMFS datastore is created and mounted on all the hosts.

# Protect datastores and virtual machines

## Enable SRA to protect datastores

ONTAP tools for VMware vSphere provides the option to enable the SRA capability to configure disaster recovery.

### What you will need

- You should have set up your vCenter Server instance and configured ESXi host.
- You should have deployed ONTAP tools.
- You should have downloaded the SRA Adapter `.tar.gz` file from the [NetApp Support Site](#).

### Steps

1. Log in to the SRM appliance management interface using the URL: `https://:<srn_ip>:5480`, and then go to Storage Replication Adapters in VMware SRM appliance management interface.
2. Select **New Adapter**.
3. Upload the `.tar.gz` installer for the SRA plug-in to SRM.
4. Rescan the adapters to verify that the details are updated on the SRM Storage Replication Adapters page.

## Configure storage system for disaster recovery

### Configure SRA for SAN and NAS environments

You should set up the storage systems before running Storage Replication Adapter (SRA) for Site Recovery Manager (SRM).

### Configure SRA for SAN environments

#### What you will need

You should have the following programs installed on the protected site and the recovery site:

- SRM  
Documentation about installing SRM is on the VMware site.

[VMware Site Recovery Manager Documentation](#)

- SRA  
The adapter is installed on SRM.

### Steps

1. Verify that the primary ESXi hosts are connected to the LUNs in the primary storage system on the protected site.

2. Verify that the LUNS are in igroups that have the `ostype` option set to *VMware* on the primary storage system.
3. Verify that the ESXi hosts at the recovery site have appropriate iSCSI connectivity to the storage virtual machine (SVM). The secondary site ESXi hosts should have access to the secondary site storage, and the primary site ESXi hosts should have access to the primary site storage.

You can do this either by verifying that the ESXi hosts have local LUNs connected on the SVM or the `iscsi show initiators` command on the SVMs.

Check the LUN access for the mapped LUNs in the ESXi host to verify iSCSI connectivity.

## Configure SRA for NAS environments

### What you will need

You should have the following programs installed on the protected site and the recovery site:

- SRM

Documentation about installing SRM can be found on the VMware site.

[VMware Site Recovery Manager Documentation](#)

- SRA

The adapter is installed on SRM and the SRA server.

### Steps

1. Verify that the datastores at the protected site contain virtual machines that are registered with vCenter Server.
2. Verify that the ESXi hosts at the protected site have mounted the NFS exports volumes from the storage virtual machine (SVM).
3. Verify that valid addresses such as the IP address, host name, or FQDN on which the NFS exports are present are specified in the **NFS Addresses** field when using the Array Manager wizard to add arrays to SRM.
4. Use the `ping` command on each ESXi host at the recovery site to verify that the host has a VMkernel port that can access the IP addresses that are used to serve NFS exports from the SVM.

## Configure SRA for highly scaled environments

You should configure the storage timeout intervals per the recommended settings for Storage Replication Adapter (SRA) to perform optimally in highly scaled environments.

### Storage Provider settings

You should set the following timeout values on SRM for scaled environment:

Advanced settings	Timeout values
-------------------	----------------

<code>StorageProvider.resignatureTimeout</code>	Increase the value of the setting from 900 seconds to 12000 seconds.
<code>storageProvider.hostRescanDelaySec</code>	60
<code>storageProvider.hostRescanRepeatCnt</code>	20
<code>storageProvider.hostRescanTimeoutSec</code>	Set a high value (For example: 99999)

You should also enable the `StorageProvider.autoResignatureMode` option.

See the VMware documentation for more information on modifying Storage Provider settings.

[VMware vSphere Documentation: Change Storage Provider Settings](#)

## Storage settings

When you hit a timeout, increase the values of `storage.commandTimeout` and `storage.maxConcurrentCommandCnt` to a higher value.



The timeout interval specified is the maximum value. You do not need to wait for the maximum timeout to be reached. Most commands finish within the set maximum timeout interval.

See the VMware documentation on modifying SAN Provider settings for more information.

[VMware Site Recovery Manager Documentation: Change Storage Settings](#)

## Configure SRA on the SRM appliance

After you have deployed the SRM appliance, you should configure SRA on the SRM appliance. The successful configuration of SRA enables the SRM appliance to communicate with SRA for disaster recovery management. You should store ONTAP tools for VMware vSphere credentials (IP address) in the SRM appliance to enable communication between SRM appliance and SRA.

### What you will need

You should have downloaded the `.tar.gz` file from [NetApp Support Site](#).

### About this task

The configuration of SRA on SRM appliance stores the SRA credentials in the SRM appliance.

### Steps

1. On the SRM appliance screen, click **Storage Replication Adapter > New Adapter**.
2. Upload the `.tar.gz` file to SRM.
3. Log in using administrator account to the SRM appliance using putty.

4. Switch to the root user using the command: `su root`
5. Run the command `cd /var/log/vmware/srm` to navigate to the log directory.
6. At the log location, enter the command to get the docker ID used by SRA: `docker ps -l`
7. To log in to the container ID, enter the command: `docker exec -it -u srm <container id> sh`
8. Configure SRM with ONTAP tools for VMware vSphere IP address and password using the command:  

```
perl command.pl -I --otv-ip <OTV_IP>:8443 --otv-username <Application
username> --otv-password <Application password> --vcenter-guid <VCENTER_GUID>'
```



You need to provide the password value within single quotes to ensure that the Perl script does not read the special characters in the password as a delimiter of the input.

9. Rescan the adapters to verify that the details are updated on the SRM Storage Replication Adapters page.

A success message confirming that the storage credentials are stored is displayed. SRA can communicate with SRA server using the provided IP address, port and credentials.

## Update SRA credentials

For SRM to communicate with SRA, you should update SRA credentials on the SRM server if you have modified the credentials.

### What you will need

You should have executed the steps mentioned in the topic [Configuring SRA on the SRM appliance](#).

### Steps

1. Run the following commands to delete the SRM machine folder cached ONTAP tools username password:
  - a. `sudo su <enter root password>`
  - b. `docker ps`
  - c. `docker exec -it <container_id> sh`
  - d. `cd /conf`
  - e. `rm -rf *`
2. Run the Perl command to configure SRA with the new credentials:
  - a. `cd ..`
  - b. `perl command.pl -I --otv-ip <OTV_IP>:8443 --otv-username <OTV_ADMIN_USERNAME> --otv-password <OTV_ADMIN_PASSWORD> --vcenter-guid <VCENTER_GUID>` You need to have a single quote around the password value.

A success message confirming that the storage credentials are stored is displayed. SRA can communicate with SRA server using the provided IP address, port and credentials.

# Configure protected and recovery sites

## Configure protection groups

You should create protection groups to protect a group of virtual machines on the protected site.

### What you will need

You should ensure that both the source and target sites are configured for the following:

- Same version of SRM installed
- Virtual machines
- Paired protected and recovery sites
- Source and destination datastores should be mounted on respective sites

### Steps

1. Log in to vCenter Server and then click **Site Recovery > Protection Groups**.
2. In the **Protection Groups** pane, click **New**.
3. Specify a name and description for the protection group, direction, and then click **Next**.
4. In the **Type** field, select the **Type field option...** as Datastore groups (array-based replication) for NFS and VMFS datastore.  
The fault domain is nothing but SVMs with replication enabled. The SVMs that have only peering implemented and have no issues are displayed.
5. In the Replication groups tab, select either the enabled array pair or the replication groups that have the virtual machine you configured, and then click **Next**.

All the virtual machines on the replication group are added to the protection group.

6. Select either the existing recovery plan or create a new plan by clicking **Add to new recovery plan**.
7. In the Ready to complete tab, review the details of the protection group that you created, and then click **Finish**.

## Pair protected and recovery sites

You should pair the protected and recovery sites created using your vSphere Client to enable Storage Replication Adapter (SRA) to discover the storage systems.



Storage Replication Adapter (SRA) does not support fan-out SnapMirror configurations. SnapMirror fan-out configurations are those where a source volume is replicated to two different destinations. These create a problem during recovery when SRM needs to recover the virtual machine from its destination.

### What you will need

- You should have Site Recovery Manager (SRM) installed on the protected and recovery sites.
- You should have SRA installed on the protected and recovery sites.



## Steps

1. Double-click **Site Recovery** on the vSphere Client home page, and then click **Sites**.
2. Click **Objects > Actions > Pair Sites**.
3. In the Pair Site Recovery Manager Servers dialog box, enter the address of the protected site's Platform Services Controller, and then click **Next**.
4. In the Select vCenter Server section, do the following:
  - a. Verify that the protected site's vCenter Server appears as a matching candidate to pair.
  - b. Enter the SSO administrative credentials, and then click **Finish**.
5. If prompted, click **Yes** to accept the security certificates.

## Result

Both the protected and recovery sites will appear in the Objects dialog box.

## Configure protected and recovery site resources

### Configure network mappings

You should configure your resource mappings like VM networks, ESXi hosts, and folders on both sites to enable the mapping of each resource from the protected site to the appropriate resource at the recovery site.

You should complete the following resource configurations:

- Network mappings
- Folder mappings
- Resource mappings
- Placeholder datastores

### What you will need

You should have connected the protected and recovery sites.

## Steps

1. Log in to vCenter Server and click on **Site Recovery > Sites**.
2. Select your protected site, and then click **Manage**.
3. In the Manage tab, select **Network Mappings**.
4. Click **New** to create a new network mapping.

The Create Network Mapping wizard appears.

5. In the Create Network Mapping wizard, perform the following:
  - a. Select **Automatically Prepare Mappings for Networks with Matching Names** and click **Next**.
  - b. Select the required data center objects for the protected and recovery sites and click **Add Mappings**.
  - c. Click **Next** after mappings are created successfully.

- d. Select the object used earlier to create reverse mapping, then click **Finish**.

## Result

The Network Mappings page displays the protected site resources and the recovery site resources. You can follow the same steps for other networks in your environment.

## Configure folder mappings

You should map your folders on the protected site and recovery site to enable communication between them.

## What you will need

You should have connected the protected and recovery sites.

## Steps

1. Log in to vCenter Server and click on **Site Recovery > Sites**.
2. Select your protected site, and then click **Manage**.
3. In the Manage tab, select **Folder Mappings**.
4. Select **Folder** icon to create a new folder mapping.

The Create Folder Mapping wizard appears.

5. In the Create Folder Mapping wizard, perform the following:
  - a. Select **Automatically Prepare Mappings for Folders with Matching Names** and click **Next**.
  - b. Select the required data center objects for the protected and recovery sites and click **Add Mappings**.
  - c. Click **Next** after mappings are created successfully.
  - d. Select the object used earlier to create reverse mapping and then click **Finish**.

## Result

The Folder Mappings page displays the protected site resources and the recovery site resources. You can follow the same steps for other networks in your environment.

## Configure resource mappings

You should map your resources on the protected site and recovery site so that virtual machines are configured to fail over into one group of hosts or the other.

## What you will need

You should have connected the protected and recovery sites.



In Site Recovery Manager (SRM), resources can be resource pools, ESXi hosts, or vSphere clusters.

## Steps

1. Log in to vCenter Server and click on **Site Recovery > Sites**.
2. Select your protected site, and then click **Manage**.
3. In the Manage tab, select **Resource Mappings**.
4. Click **New** to create a new resource mapping.

The Create Resource Mapping wizard appears.

5. In the Create Resource Mapping wizard, perform the following:
  - a. Select **Automatically Prepare Mappings for Resource with Matching Names** and click **Next**.
  - b. Select the required data center objects for the protected and recovery sites and click **Add Mappings**.
  - c. Click **Next** after mappings are created successfully.
  - d. Select the object used earlier to create reverse mapping and then click **Finish**.

## Result

The Resource Mappings page displays the protected site resources and the recovery site resources. You can follow the same steps for other networks in your environment.

## Configure placeholder datastores

You should configure a placeholder datastore to hold a place in the vCenter inventory at the recovery site for the protected virtual machine (VM). The placeholder datastore does not need to be large as the placeholder VMs are small and use only a few hundred or fewer kilobytes.

## What you will need

- You should have connected the protected and recovery sites.
- You should have configured your resource mappings.

## Steps

1. Log in to vCenter Server and click on **Site Recovery > Sites**.
2. Select your protected site, and then click **Manage**.
3. In the Manage tab, select **Placeholder Datastores**.
4. Click **New** to create a new placeholder datastore.
5. Select the appropriate datastore, and then click **OK**.



Placeholder datastores can be local or remote and should not be replicated.

6. Repeat steps 3 to 5 to configure a placeholder datastore for the recovery site.

## Configure SRA using array manager

You can configure Storage Replication Adapter (SRA) by using the Array Manager wizard of Site Recovery Manager (SRM) to enable interactions between SRM and storage virtual machines (SVMs).

## What you will need

- You should have paired the protected sites and recovery sites in SRM.
- You should have configured your onboarded storage before configuring the array manager.
- You should have configured and replicated the SnapMirror relationships between the protected sites and recovery sites.
- You should have enabled the SVM management LIFs to enable multitenancy.

SRA supports cluster-level management and SVM-level management. If you add storage at a cluster level, then you can discover and perform operations on all the SVMs in the cluster. If you add storage at an SVM level, then you can manage only that specific SVM.

## Steps

1. In SRM, click **Array Managers**, and then click **Add Array Manager**.
2. Enter the following information to describe the array in SRM:
  - a. Enter a name to identify the array manager in the **Display Name** field.
  - b. In the **SRA Type** field, select **NetApp Storage Replication Adapter for ONTAP**.
  - c. Enter the information to connect to the cluster or the SVM:
    - If you are connecting to a cluster, you should enter the cluster management LIF.
    - If you are connecting directly to an SVM, you should enter the IP address of the SVM management LIF.



When configuring the array manager, you should use the same connection (IP address) for the storage system that was used to onboard the storage system in ONTAP tools.  
For example, if the array manager configuration is SVM scoped, then the storage under ONTAP tools for VMware vSphere should be added at SVM level.

- d. If you are connecting to a cluster, enter the name of the SVM in the **SVM name** field.

You can also leave this field blank.

- e. Enter the volumes to be discovered in the **Volume include list** field.

You can enter the source volume at the protected site and the replicated destination volume at the recovery site.

For example, if you want to discover volume `src_vol1` that is in a SnapMirror relationship with volume `dst_vol1`, you should specify `src_vol1` in the protected site field and `dst_vol1` in the recovery site field.

- f. **(Optional)** Enter the volumes to be excluded from discovery in the **Volume exclude list** field.

You can enter the source volume at the protected site and the replicated destination volume at the recovery site.

For example, if you want to exclude volume `src_vol1` that is in a SnapMirror relationship with volume `dst_vol1`, you should specify `src_vol1` in the protected site field and `dst_vol1` in the recovery site field.

3. Click **Next**.

4. Verify that the array is discovered and displayed at the bottom of the Add Array Manager window and click **Finish**.

You can follow the same steps for the recovery site by using the appropriate SVM management IP addresses and credentials. On the Enable Array Pairs screen of the Add Array Manager wizard, you should verify that the correct array pair is selected, and that it shows as ready to be enabled.

## Verify replicated storage systems

You should verify that the protected site and recovery site are successfully paired after configuring Storage Replication Adapter (SRA). The replicated storage system should be discoverable by both the protected site and the recovery site.

### What you will need

- You should have configured your storage system.
- You should have paired the protected site and recovery site by using the SRM array manager.
- You should have enabled FlexClone license and SnapMirror license before performing the test failover operation and failover operation for SRA.

### Steps

1. Log in to your vCenter Server.
2. Navigate to **Site Recovery > Array Based Replication**.
3. Select the required Array Pair and verify the corresponding details.

The storage systems should be discovered at the protected site and recovery site with the Status as "Enabled".

# Manage ONTAP tools

## Manage datastores

### Mount NFS and VMFS datastores

Mounting a datastore provides storage access to additional (NFS/VMFS) hosts. You can mount the datastore on the additional hosts after you add the hosts to your VMware environment.



Some of the right click actions are disabled or unavailable depending on vSphere client versions and the type of datastore selected. If you're using vSphere client 8.0 or later versions, some of the right-click options are hidden. From vSphere 7.0U3 to vSphere 8.0 versions even though the options appear, the action will be disabled.

#### Steps

1. From the vSphere Client home page, click **Hosts and Clusters**.
2. In the navigation pane, select the datacenter that contains the host.
3. Repeat Step 2 for any additional hosts.
4. To mount NFS/VMFS datastores on host or host cluster, right-click on it, and then select **NetApp ONTAP tools > Mount Datastores**.
5. Select the datastores that you want to mount, and then click **Mount**.

You can track the progress in the Recent Task panel.

### Mount a vVols datastore

You can mount a VMware Virtual Volumes (vVols) datastore to one or more additional hosts to provide storage access to additional hosts. You can unmount vVols datastore only through the APIs.

#### Steps

1. From the vSphere Client home page, click **Hosts and Clusters**.
2. In the navigation pane, select the datacenter that contains the datastore.
3. Right-click the datastore and select **NetApp ONTAP tools > Mount datastore**.
4. In the **Mount datastores on Hosts** dialog box, select the hosts on which you want to mount the datastore, and then click **Mount**.

You can track the progress in the Recent Task panel.

### Resize NFS and VMFS datastores

Resizing a datastore enables you to increase the storage for your virtual machine files. You can change the size of a datastore as your infrastructure requirements change.

## About this task

You can only increase the size of an NFS and VMFS datastores. A FlexVol volume that is part of a NFS and VMFS datastores cannot shrink below the existing size but can grow by 120% maximum.

### Steps

1. From the vSphere Client home page, click **Hosts and Clusters**.
2. In the navigation pane, select the datacenter that contains the datastore.
3. Right-click the NFS or VMFS datastore and select **NetApp ONTAP tools > Resize datastore**.
4. In the Resize dialog box, specify a new size for the datastore, and then click **OK**.

## Expand vVols Datastores

When you right click on datastore object in the vCenter object view, ONTAP tools for VMware vSphere supported actions are shown under the plug-in section. Specific actions are enabled depending on the type of datastore and the current user privileges.

### Steps

1. From the vSphere Client home page, click **Hosts and Clusters**.
2. In the navigation pane, select the datacenter that contains the datastore.
3. Right-click the datastore and select **NetApp ONTAP tools > Add storage to datastore**.
4. In the **create or Select Volumes** window, you can either create new volumes or choose from the existing volumes. The UI is self-explanatory. Follow the instructions as per your choice.
5. In the **Summary** window, review the selections and click **Expand**.  
You can track the progress in the Recent Tasks panel.

## Shrink vVols datastores

Delete datastore action deletes the datastore when there are no vVols on the selected datastore.

### Steps

1. From the vSphere Client home page, click **Hosts and Clusters**.
2. In the navigation pane, select the datacenter that contains the datastore.
3. Right click on the vVol datastore and select **NetApp ONTAP tools > Remove storage from datastore**.
4. Select volumes which do not have vVols and click **Remove**.



The option to select the volume on which the vVols is residing is disabled.

5. In the **Remove storage** pop-up, select **Delete volumes from ONTAP cluster** checkbox to delete the volumes from datastore and from ONTAP storage and click **Delete**.

## Delete datastores

Remove storage from datastore action is supported on all ONTAP tools for VMware

vSphere discovered or managed vVols datastores in the vCenter Server. This action allows the removal of volumes from the vVols datastore.

The remove option is disabled when there are vVols residing on a particular volume. In addition to removing volumes from datastore, you can delete the selected volume on ONTAP storage.

Delete datastore task from ONTAP tools for VMware vSphere in the VCenter Server does the following:

- Unmounts the vVol container.
- Cleans up igroup. If igroup is not in use, removes iqname from igroup.
- Deletes Vvol container.
- Leaves the Flex volumes on the storage array.

Follow the steps below to delete NFS, VMFS, or vVOL datastore from ONTAP tools from the vCenter Server:

### Steps

1. Log in to the vSphere client using <https://vcenterip/ui>
2. Right-click a Host System or a Host Cluster or a Datastore, and then select **NetApp ONTAP tools > Delete datastore**.



You cannot delete the datastores if there are virtual machines using that datastore. You need to move the virtual machines to a different datastore before deleting the datastore.

- a. In the case of NFS or VMFS datastore a dialog box appears with the list of VMs that are using the datastore.
  - b. In the case of vVols datastore, Delete datastore action deletes the datastore only when there are no vVols associated with it. The Delete datastore dialog box provides an option to delete volumes from ONTAP cluster.
3. To delete the backing volumes on ONTAP storage, select **Delete volumes on ONTAP cluster**.

## ONTAP storage views for datastores

ONTAP storage view under configure tab of ONTAP tools for VMware vSphere provides data related to the datastores and their volume. This view provides the storage side view of the datastore.

### ONTAP storage views for NFS datastores

#### Steps

1. From the vSphere Client navigate to the NFS datastore.
2. Click the **Configure** tab in the right pane.
3. Select **NetApp ONTAP tools > ONTAP Storage**. The **Storage details** and **NFS details** appear on the right pane.
  - The storage details page contains information about storage backends, aggregate, and volume.
  - The NFS details page contains data related to the NFS datastore.



## ONTAP storage views for VMFS datastores

### Steps

1. From the vSphere Client navigate to the VMFS datastore.
2. Click the **Configure** tab in the right pane.
3. Select **NetApp ONTAP tools > ONTAP Storage**. The **Storage details** and **LUN details** appear on the right pane.
  - The storage details page contains information about storage backends, aggregate, and volume.
  - The LUN details page contains data related to the LUN.

## ONTAP storage views for vVols datastores

### Steps

1. From the vSphere Client navigate to the vVols datastore.
2. Click the **Configure** tab in the right pane.
3. Select **NetApp ONTAP tools > ONTAP Storage**.
4. The ONTAP storage view lists all the volumes. You can expand or remove storage from the ONTAP storage pane.

Follow the instructions in [Expand vVols Datastores](#) section to add vVols datastore and [Shrink vVols datastores](#) section to delete the datastore.

## Virtual machine storage view

The storage view shows the list of vVols that are created by the virtual machine.



This view is applicable for the VM which has at least one ONTAP tools for VMware vSphere managed vVols datastore related disk mounted on it.

### Steps

1. From the vSphere Client navigate to the virtual machine.
2. Click the **Monitor** tab in the right pane.
3. Select **NetApp ONTAP tools > Storage**. The **Storage** details appear on the right pane. You can see the list of vVols that are present on the VM.

You can use the 'Manage Columns' option to hide or show different columns.

## Manage storage thresholds

You can set the threshold to receive notifications in vCenter Server when the volume and the aggregate capacity reaches certain levels.

### Steps:

1. Log in to the vSphere client using `https://vcenterip/ui`
2. In the shortcuts page, click on **NetApp ONTAP tools** under the plug-ins section.

3. In the left pane of ONTAP tools, navigate to **Settings > Threshold Settings > Edit**.
4. In the **Edit Threshold** window, provide the desired values in the **Nearly Full** and **Full** fields and click Save.  
You can reset the numbers to recommended values, which is 80 for Nearly full and 90 for full.

## Manage storage backends

Storage backends are systems that the ESXi hosts use for data storage.

### Discover storage

You can run the discovery of a storage backend on demand without waiting for a scheduled discovery to update the storage details.

Follow the steps below to discover the storage backends.

#### Steps

1. Log in to the vSphere client using `https://vcenterip/ui`
2. In the shortcuts page, click on **NetApp ONTAP tools** under the plug-ins section.
3. In the left pane of ONTAP tools, navigate to **Storage Backends** and select a storage backend.
4. Click on the vertical ellipses menu and select **Discover storage**

You can track the progress in the Recent Tasks panel.

### Modify storage backends

Follow the steps in this section to modify a storage backend.

1. Log in to the vSphere client using `https://vcenterip/ui`
2. In the shortcuts page, click on **NetApp ONTAP tools** under the plug-ins section.
3. In the left pane of ONTAP tools, navigate to **Storage Backends** and select a storage backend.
4. Click on the vertical ellipses menu and select **Modify** to modify the credentials or the port name.  
You can track the progress in the Recent Tasks panel.

You can perform the Modify operation for global ONTAP clusters using ONTAP tools Manager using the following steps.

1. Launch ONTAP tools Manager from a web browser:  
`https://loadBalanceIP:8443/virtualization/ui/`
2. Log in with the ONTAP tools for VMware vSphere administrator credentials you provided during deployment.
3. Select storage backends from the sidebar.
4. Select the Storage Backend you want to modify.
5. Click on the vertical ellipses menu and select **Modify**.
6. You can modify the credentials or the port. Enter the **Username** and **Password** to modify the storage backend.

## Remove storage backends

You need to delete all the datastores attached to the storage backend before removing the storage backend. Follow the steps below to remove a storage backend.

1. Log in to the vSphere client using `https://vcenterip/ui`
2. In the shortcuts page, click on **NetApp ONTAP tools** under the plug-ins section.
3. In the left pane of ONTAP tools, navigate to **Storage Backends** and select a storage backend.
4. Click on the vertical ellipses menu and select **Remove**. Ensure that the storage backend does not contain any datastores.  
You can track the progress in the Recent Tasks panel.

You can perform the remove operation for global ONTAP clusters using ONTAP tools Manager.

1. Launch ONTAP tools Manager from a web browser:  
`https://loadBalanceIP:8443/virtualization/ui/`
2. Log in with the ONTAP tools for VMware vSphere administrator credentials you provided during deployment.
3. Select **Storage Backends** from the sidebar.
4. Select the storage backend you want to remove
5. Click on the vertical ellipses menu and select **Remove**.

## Drill down view of storage backend

The storage backend page lists all the storage backends. You can perform discover storage, modify, and remove operations on the storage backends you added and not the individual child under the cluster.

When you click on either the parent cluster or the child under the storage backend, you can see the overall summary of the component. When you click on the parent cluster you have the actions dropdown from which you can perform the discover storage, modify, and remove operations. This option is missing when you click on the child SVM.

The summary page provides the following details:

- Status of the storage backend
- Capacity information
- Basic information about the VM
- Network information like the IP address and port of the network. For the child SVM, the information will be same as the parent storage backend.
- Privileges allowed and restricted for the storage backend. For the child SVM, the information will be same as the parent storage backend. Privileges are shown only on the cluster-based storage backends. If you add SVM as the storage backend, privileges information will not be shown.

The Interface tab provides detailed information about the interface.

The Local Tiers tab provides detailed information about the aggregate list.

# Manage vCenter Server instance

vCenter Servers are central management platforms that allow you to control hosts, virtual machines, and storage backends.

## Associate or dissociate storage backends with vCenter Server instance

The vCenter Server listing page shows the associated number of storage backends. Each vCenter Server instance has the option to associate or disassociate a storage backend. This task helps you to create mapping between storage backend and onboarded vCenter Server instance globally.

### Steps

1. Launch ONTAP tools Manager from a web browser:  
`https://loadBalanceIP:8443/virtualization/ui/`
2. Log in with the ONTAP tools for VMware vSphere administrator credentials you provided during deployment.
3. Select vCenter Server instances from the sidebar.
4. Click on the vertical ellipses against the vCenter Server that you want to associate or dissociate with storage backends.
5. Select **Associate or Dissociate storage backend** depending on what action you want to perform.

## Modify vCenter Server instance

Follow the steps below to modify the vCenter Server instances.

1. Launch ONTAP tools Manager from a web browser:  
`https://loadBalanceIP:8443/virtualization/ui/`
2. Log in with the ONTAP tools for VMware vSphere administrator credentials you provided during deployment.
3. Select vCenter Server instances from the sidebar
4. Click on the vertical ellipses against the vCenter Server that you want to modify and select **Modify**.
5. Modify the vCenter Server instance details and select **Modify**.

## Remove vCenter Server instance

You need to remove all the storage backends attached to the vCenter Server before removing it.

1. Launch ONTAP tools Manager from a web browser:  
`https://loadBalanceIP:8443/virtualization/ui/`
2. Log in with the ONTAP tools for VMware vSphere administrator credentials you provided during deployment.
3. Select vCenter Server instances from the sidebar
4. Click on the vertical ellipses against the vCenter Server that you want remove and select **Remove**.



Once you remove the vCenter Server instances, it will no longer be maintained by the application.

## Manage certificates

A single instance of ONTAP tools for VMware vSphere can manage multiple vCenter Server instances. ONTAP tools for VMware vSphere is deployed with a self-signed certificate for VASA Provider. With this, only one vCenter Server instance can be managed for vVols datastores. When you're managing multiple vCenter Server instances and you want to enable vVols capability on multiple vCenter Server instances, you need to change the self-signed certificate to custom CA certificate using ONTAP tools Manager interface. You can use the same interface to renew or refresh all certificates.



A different load balancer IP address mapped to different domains is not supported when you upgrade self-signed to custom CA.

### Steps

1. Launch ONTAP tools Manager from a web browser:  
`https://loadBalanceIP:8443/virtualization/ui/`
2. Log in with the ONTAP tools for VMware vSphere administrator credentials you provided during deployment.
3. Select **Certificates** > **VASA provider** > **Renew** option to renew the certificates.



The system will be offline till the certificate is renewed.

4. To upgrade the self-signed certificate to custom CA certificate, select **Certificates** > **VASA provider** > **Upgrade to CA** option.
  - a. In the **Upgrade certificate to custom CA** pop-up, upload the server certificate, server certificate private key, root CA certificate, and intermediate certificate files. The tool tip provides description of the certificates.
  - b. Enter the domain name for which you generated this certificate.
  - c. Click **Upgrade**.



The system will be offline till the upgrade is complete.

## Manage igroups and export policies

In ONTAP, export policies are used to provide volume data path access to hosts and initiator groups (igroups) are used to provide logical unit number (LUN) data path access to ESXi hosts. ONTAP tools for VMware vSphere makes igroup creation easy and intuitive and provides rich end-to-end workflows. To ensure consistency, direct iGroup creation on storage platforms is not supported.

When virtual volume datastores are created or mounted to hosts in vCenter Server, the hosts need to be given

access to volumes (NFS) or LUNs (iSCSI) depending on the protocol type of the datastore.

The export policy is dynamic and the new export policy is created with the naming format of trident-uuid. On your ONTAP System Manager, go to **Storage > Storage VMs > [storage VM name] > Settings > Export Policies** to see the export policy.

The igroups and export policies in ONTAP tools for VMware vSphere are managed in an efficient manner and provide the following benefits:


- Supports migrated export policies and igroups.
- No interruption of virtual machine input and output operations.
- Supports mounting on additional hosts without manual intervention.
- Minimizes the need for managing the number of igroups and export policies.
- A garbage collector automatically deletes all the unused managed igroups and export policies periodically.
- If a datastore is provisioned at the host cluster level, then igroup is created with all host initiators under the host cluster that are added to the igroup.


# Access ONTAP tools for VMware vSphere maintenance console

## Overview of ONTAP tools for VMware vSphere maintenance console

You can manage your application, system, and network configurations by using the maintenance console of ONTAP tools. You can change your administrator password and maintenance password. You can also generate support bundles, set different log levels, view and manage TLS configurations, and start remote diagnostics.

You should have VMware tools installed after deploying ONTAP tools for VMware vSphere to access the maintenance console. You should use `maint` as the username and the password you configured during deployment to log in to the maintenance console of ONTAP tools. You should use `nano` for editing the files in maintenance or root login console.

 You should set a password for the `diag` user while enabling remote diagnostics.

You should use the **Summary** tab of your deployed ONTAP tools for VMware vSphere to access the maintenance console. When you click , the maintenance console starts.

Console Menu	Options
Application Configuration	<div>1. Display server status summary</div> <div>2. Change LOG level for VASA Provider Services and SRA Services</div> <div>3. Disable AutoSupport</div>

System Configuration	<ol style="list-style-type: none"> <li>1. Reboot virtual machine</li> <li>2. Shutdown virtual machine</li> <li>3. Generate token to reset manager UI password</li> <li>4. Change time zone</li> <li>5. Add new NTP server</li> <li>6. Increase jail disk size (/jail)</li> <li>7. Upgrade</li> <li>8. Install VMware Tools</li> </ol>
Network Configuration	<ol style="list-style-type: none"> <li>1. Display IP address settings</li> <li>2. Display domain name search settings</li> <li>3. Change domain name search settings</li> <li>4. Display static routes</li> <li>5. Change static routes</li> <li>6. Commit changes</li> <li>7. Ping a host</li> <li>8. Restore default settings</li> </ol>
Support and Diagnostics	<ol style="list-style-type: none"> <li>1. Access diagnostic shell</li> <li>2. Enable remote diagnostic access</li> </ol>

## Configure remote diagnostic access

You can configure ONTAP tools for VMware vSphere to enable SSH access for the diag user.

### What you will need

The VASA Provider extension should be enabled for your vCenter Server instance.

### About this task

Using SSH to access the diag user account has the following limitations:

- You are allowed only one login account per activation of SSH.
- SSH access to the diag user account is disabled when one of the following happens:
  - The time expires.  
The login session remains valid only till midnight the next day.
  - You log in as a diag user again using SSH.

### Steps

1. From vCenter Server, open a console to VASA Provider.
2. Log in as the maintenance user.
3. Enter 4 to select Support and Diagnostics.
4. Enter 3 to select Enable remote diagnostics access.
5. Enter *y* in the Confirmation dialog box to enable remote diagnostic access.
6. Enter a password for remote diagnostic access.

## Start SSH on other nodes

You need to start SSH on other nodes before you upgrade.

### What you will need

The VASA Provider extension should be enabled for your vCenter Server instance.

### About this task

Perform this procedure on each of the nodes before you upgrade.

### Steps

1. From vCenter Server, open a console to VASA Provider.
2. Log in as the maintenance user.
3. Enter 4 to select Support and Diagnostics.
4. Enter 1 to select Access diagnostic shell.
5. Enter *y* to proceed.
6. Run the command *sudo systemctl restart ssh*.

## Update the vCenter Server and ONTAP credentials

You can update the vCenter Server instance and ONTAP credentials using the maintenance console.

### What you will need

You need to have maintenance user login credentials.

### About this task

If you have changed the credentials for vCenter Server, ONTAP, or Data LIF post deployment, then you need to update the credentials using this procedure.

### Steps

1. From vCenter Server, open a console to VASA Provider.
2. Log in as the maintenance user.
3. Enter 2 to select System Configuration Menu.



4. Enter 9 to change ONTAP credentials.
5. Enter 10 to change vCenter credentials.

## ONTAP tool reports

ONTAP tools for VMware vSphere plug-in provides reports for virtual machines and datastores.

When you select the NetApp ONTAP tools for VMware vSphere plug-in icon in the shortcuts section on the vCenter client, the user interface navigates to the Overview page.

Select the Reports tab to view the virtual machine and the datastores report.

The virtual Machines report shows the list of discovered virtual machines (should have at least one disk from ONTAP storage based datastores) with performance metrics.

When you expand the VM record, all the disk related datastore info is displayed.

Datastores report shows the list of discovered or recognized ONTAP tools for VMware vSphere managed Datastores that are provisioned from ONTAP storage backend of all types with performance metrics.

You can use the Manage Columns option to hide or show different columns.

## Collect the log files

You can collect log files for ONTAP tools for VMware vSphere from the options available in ONTAP tools Manager user interface. Technical support might ask you to collect the log files to help troubleshoot a problem.



Generating logs from the ONTAP tools Manager includes all logs for all vCenter Server instances. Generating logs from vCenter client UI are scoped for the selected vCenter Server.

### Steps

1. Launch ONTAP tools Manager from a web browser:  
`https://loadBalanceIP:8443/virtualization/ui/`
2. Log in with the ONTAP tools for VMware vSphere administrator credentials you provided during deployment.
3. Select **Log Bundles** from the sidebar.

This operation can take several minutes.

4. Select **Generate** to generate the log files.
5. Enter the label for the Log Bundle and select **Generate**.

Download the tar.gz file and send it to technical support.

Follow the steps below to generate log bundle using the vCenter client UI:

### Steps

1. Log in to the vSphere client using `https://vcenterip/ui`
2. From the vSphere Client home page, go to **Support > Log bundle > Generate**.
3. Provide the log bundle label and generate the log bundle.  
You can see the download option when the files are generated. Downloading may take some time.



The log bundle generated replaces the log bundle that was generated within the last 3 days or 72 hrs.

## Manage virtual machines

### Considerations to migrate or clone virtual machines

You should be aware of some of the considerations while migrating existing virtual machines in your datacenter.

#### Migrate protected virtual machines

You can migrate the protected virtual machines to:

- Same vVols datastore in a different ESXi host
- Different compatible vVols datastore in same ESXi host
- Different compatible vVols datastore in a different ESXi host

If the virtual machine is migrated to a different FlexVol volume, then the respective metadata file also gets updated with the virtual machine information. If a virtual machine is migrated to a different ESXi host but same storage, then underlying FlexVol volume metadata file will not be modified.

#### Clone protected virtual machines

You can clone protected virtual machines to the following:

- Same container of same FlexVol volume using replication group

Same FlexVol volume's metadata file is updated with the cloned virtual machine details.

- Same container of a different FlexVol volume using replication group

The FlexVol volume where the cloned virtual machine is placed, the metadata file gets updated with the cloned virtual machine details.

- Different container or vVols datastore

The FlexVol volume where the cloned virtual machine is placed, the metadata file gets updated virtual machine details.

VMware presently does not support virtual machines cloned to a VM template.

Clone-of-Clone of a protected virtual machine is supported.

## Virtual Machine Snapshots

Presently only virtual machine Snapshots without memory are supported. If virtual machine has Snapshot with memory, then the virtual machine is not considered for protection.

You also cannot protect unprotected virtual machines that have memory Snapshot. For this release, you are expected to delete memory snapshot before enabling protection for the virtual machine.

## Migrate virtual machines with NFS and VMFS datastores to vVols datastores

You can migrate virtual machines from NFS and VMFS datastores to Virtual Volumes (vVols) datastores to take advantage of policy-based VM management and other vVols capabilities. vVols datastores enable you to meet increased workload requirements.

### What you will need

Ensure that VASA Provider is not running on any of the virtual machines that you plan to migrate. If you migrate a virtual machine that is running VASA Provider to a vVols datastore, you cannot perform any management operations, including powering on the virtual machines that are on vVols datastores.

### About this task

When you migrate from a NFS and VMFS datastore to a vVols datastore, the vCenter Server uses vStorage APIs for Array Integration (VAAI) offloads when moving data from VMFS datastores, but not from an NFS VMDK file. VAAI offloads normally reduce the load on the host.

### Steps

1. Right-click the virtual machine that you want to migrate, and then click **Migrate**.
2. Select **Change storage only** and then click **Next**.
3. Select a virtual disk format, a VM Storage Policy, and a vVol datastore that matches the features of the datastore that you are migrating. Click **Next**.
4. Review the settings, and then click **Finish**.

## VASA cleanup

Use the steps in this section to perform VASA cleanup.



It is recommended that you remove any vVols datastores before performing the VASA Cleanup.

### Steps

1. Unregister the plug-in by going into [https://OTV\\_IP:8143/Register.html](https://OTV_IP:8143/Register.html)
2. Verify that the plug-in is no longer available on the vCenter Server.
3. Shut down ONTAP tools for VMware vSphere VM.
4. Delete ONTAP tools for VMware vSphere VM.

# Modify ESXi host settings using ONTAP tools

You can use the dashboard of ONTAP tools for VMware vSphere to edit your ESXi host settings.

## What you will need

If there is an issue with your ESXi host settings, the issue is displayed in the ESXi host systems portlet of the dashboard. You can click the issue to view the host name or the IP address of the ESXi host that has the issue.

## Steps

1. Log in to the vSphere client using `https://vcenterip/ui`
2. In the shortcuts page, click on **NetApp ONTAP tools** under the plug-ins section.
3. Go to **ESXi Host compliance** portlet in the Overview (Dashboard) of the ONTAP tools for VMware vSphere plug-in.
4. Select **Apply Recommended Settings** link.
5. In the **Apply recommended host settings** window, select the hosts that you want to comply with NetApp recommended host settings and click **Next**.



You can expand the ESXi host to see the current values.

6. In the settings page, select the recommended values as required.
7. In the summary pane, check the values and click **Finish**.  
You can track the progress in the Recent task panel.

# Manage passwords

## Change ONTAP tools Manager password

You can change the administrator password using ONTAP tools Manager.

## Steps

1. Launch ONTAP tools Manager from a web browser:  
`https://loadBalanceIP:8443/virtualization/ui/`
2. Log in with the ONTAP tools for VMware vSphere administrator credentials you provided during deployment.
3. Click on the **administrator** icon on the top right corner of the screen and select **Change password**.
4. In the change password pop-up window, enter the old password and the new password details. The constraint for changing the password is displayed on the UI screen.
5. Click **Change** to implement the changes.

## Reset ONTAP tools Manager password

If you've forgotten the ONTAP tools Manager password, you can reset the administrator credentials using the token generated by ONTAP tools for VMware vSphere maintenance

console.

### Steps

1. Launch ONTAP tools Manager from a web browser:  
`https://loadBalanceIP:8443/virtualization/ui/`
2. On the login screen, select **Reset password** option.

To reset the Manager password, you need to generate the reset token using the ONTAP tools for VMware vSphere maintenance console.

- .. From vCenter Server, open the maintenance console
- .. Enter '2' to select System Configuration option
- .. Enter '3' to generate the token to reset manager password

3. In the change password pop-up window, enter the password reset token, username, and the new password details.
4. Click **Reset** to implement the changes.  
On successful password reset, you can use new password to log in.

### Reset application user password

The application user password is used for SRA and VASA provider registration with vCenter Server.

### Steps

1. Launch ONTAP tools Manager from a web browser:  
`https://loadBalanceIP:8443/virtualization/ui/`
2. Log in with the ONTAP tools for VMware vSphere administrator credentials you provided during deployment.
3. Click on **Settings** from the sidebar.
4. In the **Application user credentials** screen, select **Reset password**.
5. Provide username, new password and confirm new password inputs.
6. Click **Reset** to implement the changes.

### Reset maintenance console user password

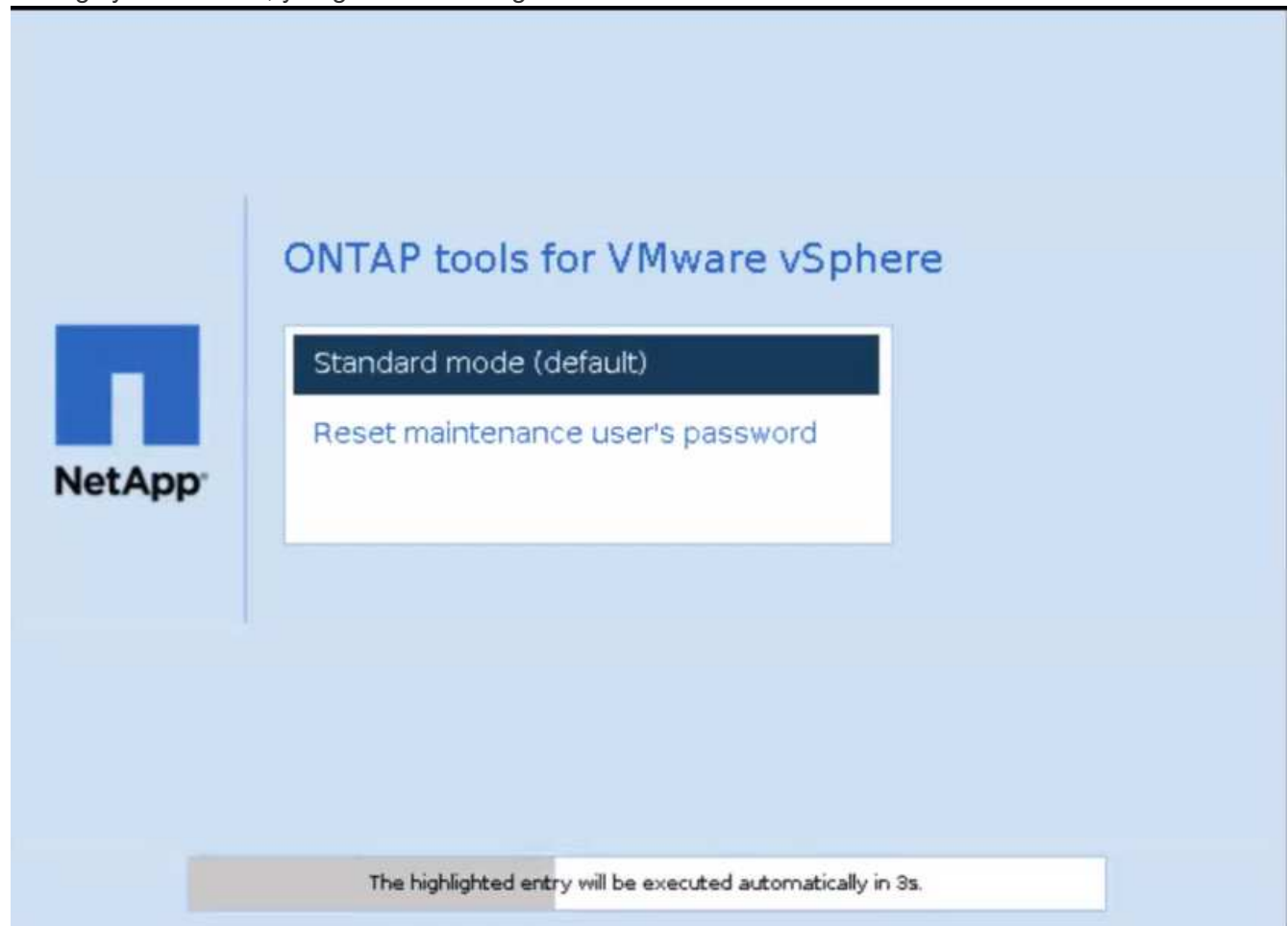
During guest OS restart operation, grub menu displays an option to reset maintenance console user password.

This option is used to update the maintenance console user password present on the corresponding VM. Once the reset password is complete, the VM restarts to set the new password. In HA deployment scenario, after the VM restart, the password is automatically updated on the other two VMs.

### Steps

1. Log in to your vCenter Server
2. Right-click on the VM and select **Power > Restart Guest OS**

During system restart, you get the following screen:



You have 5 seconds to choose your option. Press any key to stop the progress and freeze the grub menu.

3. Select **Reset maintenance user's password** option. The maintenance console opens.
4. In the console, enter the new password details. New password and retype new password details should match to successfully reset the password. You have three chances to enter the correct password. The system restarts after successfully entering the new password.
5. Press Enter to continue.  
The password is updated on the VM.



The same grub menu comes up during power on of the VM as well. However, you should use the reset password option only with **Restart Guest OS** option.

## Clean up volumes

After deleting ONTAP tools for VMware vSphere deployment, you should clean up the FlexVolumes created during the deployment. If you have used a dedicated ONTAP cluster for deployments, you should clean up the FlexVolumes as the deployment creates lot of FlexVolumes which are unused resulting in lowered performance.

Use the following guidelines to clean up the FlexVolumes post removal of ONTAP tools for VMware vSphere deployment.

## Steps

1. From the primary node VM of ONTAP tools for VMware vSphere, run the following command to identify the type of deployment.

```
cat /opt/netapp/meta/ansible_vars.yaml | grep -i protocol
```

If it is an iSCSI deployment, then you need to delete igroups as well.

2. Fetch the list of FlexVolumes created in ONTAP during the deployment using the following command.

```
kubectl describe persistentvolumes | grep internalName | awk -F=' ' '{print $2}'
```

3. Delete VMs from vCenter Server, see [Remove VMs or VM Templates from vCenter Server or from the Datastore](#)
4. Delete volumes from ONTAP system manager, see [Delete a FlexVol volume](#). Give the exact name of the FlexVolume in the cli command to delete the volume.
5. In case of iSCSI deployment, delete SAN igroups from ONTAP, see [View and manage SAN initiators and igroups](#).

In HA deployment, four igroups are created and in non-HA deployment two igroups are created. Run the following command to find the first igroup name:

```
kubectl -n trident get tbc trident-backend -o yaml | grep igroupName: | awk -F:' ' '{print $2}'
```

The other igroup names start with the hostname of the VM.

# Upgrade ONTAP tools

## Upgrade to the latest release of ONTAP tools

When you upgrade from ONTAP tools for VMware vSphere 10.0 and 10.1 to 10.1, a recovery volume is created and all the necessary details are taken into the recovery volume. The recovery volume can be used to recover the ONTAP tools for VMware vSphere setup if you need to recover your configuration. If you're performing a patch-level upgrade of ONTAP tools for VMware vSphere 10.1, the same recovery volume is used and the details are refreshed.

Upgrade is supported for both HA and non-HA deployments.

### Before you begin

You need to complete the following steps before proceeding with the upgrade task:

### Enable Diagnostics

1. From vCenter Server, open a console to ONTAP tools.
2. Log in as the maintenance user.
3. Enter **4** to select Support and Diagnostics.
4. Enter **2** to select Enable remote diagnostic access.
5. Enter **y** to set the password of your choice.
6. Login to VM IP address from the terminal/putty with user as 'diag' and password that was set in the previous step.

### Take Backup of MongoDB

Run the following commands to take a backup of mongoDB:

- `kn exec -it ntv-mongodb-0 sh - kn is an alias of kubectl -n ntv-system.`
- `env | grep MONGODB_ROOT_PASSWORD - run this command inside the pod.`
- `'exit' - run this to come out of the pod.`
- `kn exec ntv-mongodb-0 --mongodump -u root -p MONGODB_ROOT_PASSWORD --archive=/tmp/mongodb-backup.gz --gzip - run this command to replace MONGO_ROOT_PASSWORD set from above command.`
- `kn cp ntv-mongodb-0:/tmp/mongodb-backup.gz ./mongodb-backup.gz - run this command to copy the mongodb backup created using above command from pod to host.`

### Take the snapshot of all the volumes

- Run `'kn get pvc'` command and save the output of the command.
- Take snapshots of all the volumes one by one using one of the following methods:
  - From CLI, run the command `volume snapshot create -vserver <vserver_name> -volume <volume_name> -snapshot <snapshot_name>`
  - From ONTAP system manager user interface search the volume by its name in the search bar then



open that volume by clicking on the name. Go to snapshot and add the snapshot of that volume.

### Take the snapshot of ONTAP tools for VMware vSphere VMs in vCenter (3VMs in case of HA Deployment, 1 VM in case of non-HA deployment)

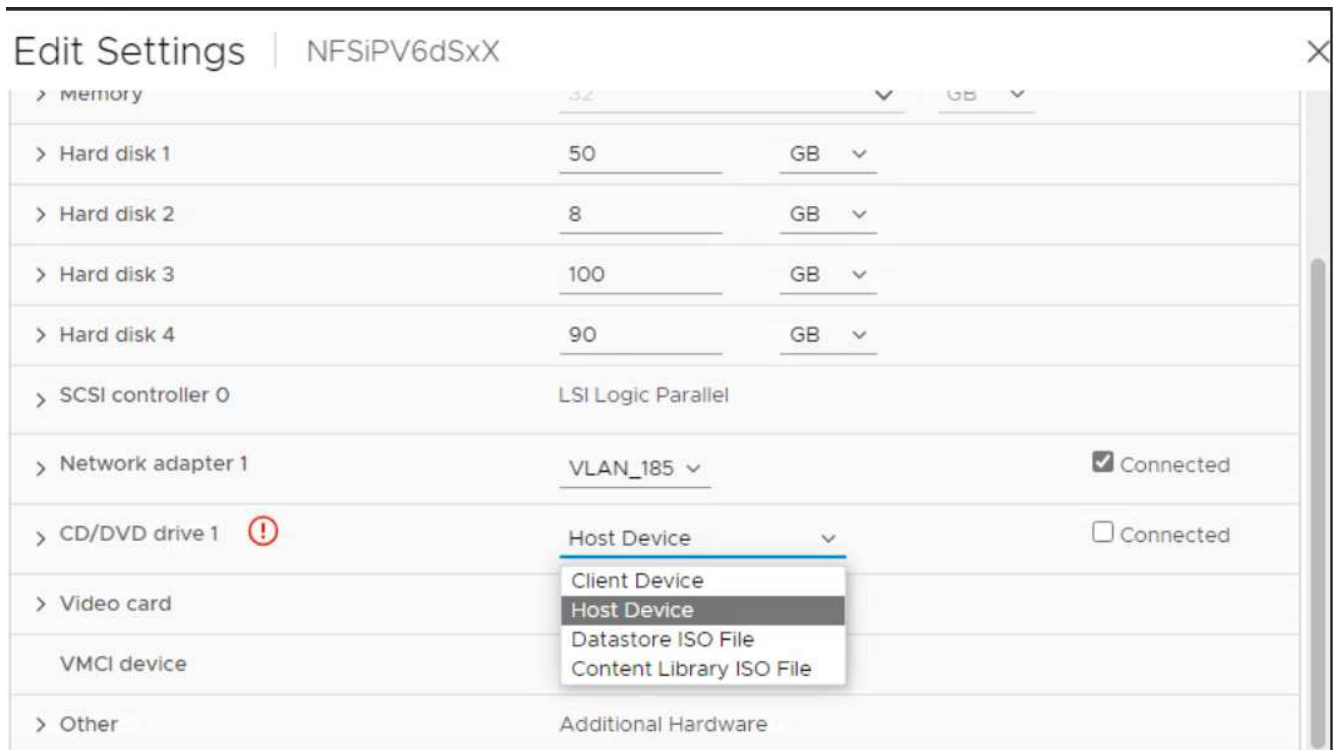
- In the vSphere client user interface, select the VM.
- Go to the snapshots tab and click the **Take Snapshot** button.

From the log bundle, delete the completed pods with prefix “generate-support-bundle-job” before performing the upgrade.

If support bundle generation is in progress, wait for it to complete and then delete the pod.

### Steps

1. Upload ONTAP tools for VMware vSphere upgrade ISO to content library.
2. In the primary VM page, select **Actions > Edit Settings**
3. In the edit settings window under **CD/DVD drive** field select content library ISO file.
4. Select the ISO file and click **OK**. Choose the connected checkbox across the **CD/DVD drive** field.



5. From vCenter Server, open a console to ONTAP tools.
6. Log in as the maintenance user.
7. Enter **3** to select the System Configuration menu.
8. Enter **7** to select the upgrade option.
9. When you upgrade, the following actions are performed automatically:
  - a. Certificate upgrade
  - b. Remote plug-in upgrade

## Upgrade error codes

You might encounter error codes during ONTAP tools for VMware vSphere upgrade operation.

The error codes are five digits long, where the first two digits represent the script that encountered the issue, and the last three digits represent the specific workflow within that script.

All error logs are recorded in the `ansible-perl-errors.log` file to facilitate easy tracking and resolution of issues. This log file contains the error code and the failed Ansible task.



The error codes provided on this page are for reference only. Contact the support team if error persists or if there's no resolution mentioned.

The following table lists the error codes and the corresponding file names.

Error code	Script name
00	firstboot-network-config.pl, mode deploy
01	firstboot-network-config.pl, mode upgrade
02	firstboot-inputs-validation.pl
03	firstboot-deploy-otv-ng.pl, deploy, ha
04	firstboot-deploy-otv-ng.pl, deploy, non-ha
05	firstboot-deploy-otv-ng.pl, reboot
06	firstboot-deploy-otv-ng.pl, upgrade, ha
07	firstboot-deploy-otv-ng.pl, upgrade, non-ha
08	firstboot-otv-recovery.pl

The last three digits of the error code indicate the specific workflow error within the script:

Upgrade error code	Workflow	Resolution
063	Copying contents to recovery volume has failed	Perform snapshot-based recovery.
068	Debian packages rollback has failed	Perform snapshot-based recovery.
069	Failed restoring files	Perform snapshot-based recovery.
070	Failed deleting backup	Perform snapshot-based recovery.
071	Kubernetes cluster was not healthy	Perform snapshot-based recovery.
072	CR file does not exist in jail disk	Perform snapshot-based recovery.
073	Applying the CR failed while setting force reconcile flag to false	Perform snapshot-based recovery.
074	Mount ISO has failed	Retry the upgrade.

075	Upgrade pre-checks has failed	Retry the upgrade.
076	Registry upgrade has failed	Perform snapshot-based recovery.
077	Registry rollback has failed	Perform snapshot-based recovery.
078	Operator upgrade has failed	Perform snapshot-based recovery.
079	Operator rollback has failed	Perform snapshot-based recovery.
080	Services upgrade has failed	Perform snapshot-based recovery.
081	Services rollback has failed	Perform snapshot-based recovery.
082	Deleting old images from container failed	Perform snapshot-based recovery.
083	Deleting backup has failed	Perform snapshot-based recovery.
084	Changing JobManager back to Production failed	Perform snapshot-based recovery.
085	failed creating CA certificate secrets	Perform snapshot-based recovery.
086	failed creating server/private-key certificate secrets	Perform snapshot-based recovery.
087	Failed! to complete post 10.0 to 10.1 upgrade steps	Post upgrade steps failed.
088	Configuring log rotate for journald has failed	Retry the upgrade.

Learn more about [How to restore ONTAP tools for VMware vSphere if upgrade fails from version 10.0 to 10.1](#)

# Migrate ONTAP tools

## Migrate to the latest release of ONTAP tools

When migrating storage data, storage backends are onboarded manually using REST APIs. When migrating VASA provider data, data is exported from existing Derby database and imported into the MongoDB database.



It is recommended to migrate ONTAP tools for VMware vSphere 9.xx setup only if the setup is servicing the VASA provider feature alone. If you have NVMe datastores and vVol replication, it is not recommended to migrate the setup to ONTAP tools for VMware vSphere 10.1.

### About this task

Migration is supported from ONTAP tools for VMware vSphere 9.10D2, 9.11D4, 9.12, and 9.13 releases to 10.1 release.



As an existing user, you need to take the OVA backup from your current release before upgrading to the patch releases.

### Common migration steps

1. Deploy OVA for ONTAP tools for VMware vSphere 10.1 release.
2. Add the vCenter Server instance that you want to migrate to ONTAP tools for VMware vSphere 10.1 release. See [Add and manage vCenter Server instances](#)
3. Onboard storage backend locally from the ONTAP tools for VMware vSphere plug-in vCenter APIs. Add storage as a locally scoped storage for migration.
4. The NFS and VMFS datastores migrated from ONTAP tools for VMware vSphere 9.xx is visible in ONTAP tools for VMware vSphere 10.1 only after the datastore discovery job is triggered, which might take up to 30 minutes to trigger. Verify if the datastores are visible in the Overview page of the ONTAP tools for VMware vSphere Plugin UI page.

### SRA migration steps

#### Before you begin

Before migrating, ensure that one of the sites is in a protected state and the other is in recovery state.



Do not migrate if the failover just completed and re-protect is pending. Complete the re-protect and then perform the migration. Same applies to testing the recovery plan. Once the testing of recovery plan is complete, cleanup the test recovery and then start the migration.

1. Perform the following steps to delete ONTAP tools for VMware vSphere 9.xx release SRA adapter in SRM UI:
  - a. Go to SRM Configuration management page
  - b. Go to Storage Replication Adapter section

- c. Click on Kebab menu, and click on **Reset configuration**
- d. Click on Kebab menu and select **Delete**

Perform these steps on both protection and recovery sites.

2. Install ONTAP tools for VMware vSphere 10.1 SRA adapter on both protection and recovery sites using the steps in [Configure SRA on the SRM appliance](#)
3. In the SRM UI page, perform **Discover Arrays** and **Discover Devices** operations and verify that the devices are showing up as it was before the migration.

## VASA provider migration steps

1. Enable Derby PORT 1527 on the existing ONTAP tools for VMware vSphere. To enable the port, log in to CLI with root user and run the following command:

```
iptables -I INPUT 1 -p tcp --dport 1527 -j ACCEPT
```

2. Deploy OVA for ONTAP tools for VMware vSphere 10.1 release.
3. Add the vCenter Server instance that you want to migrate to ONTAP tools for VMware vSphere 10.1 release. See [Add a vCenter Server instance](#).
4. Onboard storage backend locally from the remote plug-in vCenter APIs. Add storage as local scoped for migration.
5. Issue the following API call to migrate:

## HTTP method and endpoint

This REST API call uses the following method and endpoint.

HTTP method	Path
POST	/api/v1

## Processing type

Asynchronous

## Curl example

```
/api/v1/vcenters/{vcguid}/migration-jobs
```

## JSON input example

Request body for migrating from 9.12 and 9.13:

```
{
  "otv_ip": "10.12.13.45",
  "vasa_provider_credentials": {
    "username": "vasauser",
    "password": ""
  }
  "database_password": ""
}
```

Request body for other release migration:

```
{
  "otv_ip": "10.12.13.45",
  "vasa_provider_credentials": {
    "username": "vasauser",
    "password": ""
  }
}
```

## JSON output example

A job object is returned. You should save the job identifier to use it in the next step.

```
{
  "id": 123,
  "migration_id": "d50073ce-35b4-4c51-9d2e-4ce66f802c35",
  "status": "running"
}
```

6. Use the following URI to check the status:

```
https://xx.xx.xx.xxx:8443/virtualization/api/jobmanager/v2/jobs/<JobID>?
includeSubJobsAndTasks=true
```

Once the job is completed, validate the migration report. You can see the report from the job-response as part of the jobData.

7. Add ONTAP tools for VMware vSphere storage provider to the vCenter Server and [Register VASA Provider to vCenter Server](#).
8. Stop ONTAP tools for VMware vSphere storage provider 9.10/9.11/9.12/9.13 VASA Provider service from maintenance console.

Do not delete the VASA provider.

Once the old VASA provider is stopped, vCenter Server fails over to ONTAP tools for VMware vSphere. All the datastores and VMs become accessible and are served from ONTAP tools for VMware vSphere.

9. Perform the patch migrate using the following API:

## HTTP method and endpoint

This REST API call uses the following method and endpoint.

HTTP method	Path
PATCH	/api/v1

## Processing type

Asynchronous

## Curl example

```
PATCH "/api/v1/vcenters/56d373bd-4163-44f9-a872-9adabb008ca9/migration-jobs/84dr73bd-9173-65r7-w345-8ufdbb887d43"
```

## JSON input example

```
{
  "id": 123,
  "migration_id": "d50073ce-35b4-4c51-9d2e-4ce66f802c35",
  "status": "running"
}
```

## JSON output example

A job object is returned. You should save the job identifier to use it in the next step.

```
{
  "id": 123,
  "migration_id": "d50073ce-35b4-4c51-9d2e-4ce66f802c35",
  "status": "running"
}
```

Request body is empty for patch operation.



uuid is the migration uuid returned in the response of post migrate API.

Once the patch migrate API is successful, all the VMs will be compliant with the storage policy.

10. The delete API for migration is:



HTTP method	Path
DELETE	/api/v1

### Processing type

Asynchronous

### Curl example

```
/api/v1/vcenters/{vcguid}/migration-jobs/{migration_id}
```

This API deletes migration by Migration Id and deletes migration on the given vCenter Server.

After successful migration and after you register ONTAP tools 10.1 to the vCenter Server, do the following:

- Refresh the certificate on all the hosts.
- Wait for some time before performing Datastore (DS) and Virtual Machine (VM) operations. The waiting time depends on the number of hosts, DS, and VMs that are present in the setup. When you don't wait, the operations may fail intermittently.

# Automate using REST APIs

## Overview of REST APIs

REST APIs can be used to perform several ONTAP tools for VMware vSphere management operations. REST APIs are exposed through the Swagger web page.

You can access the Swagger web page available at <https://loadbalancerIP:8443/> to display the REST API documentation, as well as to manually issue an API call.



All the APIs have request body and examples mentioned in the swagger page. The workflows and examples provided in this section are for reference purposes only.

## How to access ONTAP tools for VMware vSphere REST API

You can access the ONTAP REST API in several different ways.

### Network considerations

You can connect to the REST API through the following interfaces:

- Cluster management LIF
- Node management LIF
- SVM management LIF

The LIF you choose to use should be configured to support the HTTPS management protocol. Also, the firewall configuration in your network should allow the HTTPS traffic.



You should always use a cluster management LIF. This will load balance the API requests across all the nodes and avoid nodes that are offline or experiencing connectivity issues. If you have multiple cluster management LIFs configured, they are all equivalent regarding access to the REST API.

## ONTAP tools for VMware vSphere API online documentation page

You can access the Swagger from the hyperlink in the support page of the NetAPP ONTAP tools for VMware vSphere plug-in.

The format of the URL used to access the documentation page for the most recent version of the API is:

``https://<loadbalancer_ip_address>/docs/api``

## Custom software and tools

You can access ONTAP tools for VMware vSphere API using any of several different programming languages and tools. Popular choices include Python, Java, Curl, and PowerShell. A program, script, or tool that uses the API acts as a REST web services client. Using a programming language enables a deeper understanding of the API and provides an opportunity to automate ONTAP tools for VMware vSphere administration.

The format of the base URL used to directly access the most recent version of the API is:

```
`https://<loadbalancer_ip_address>/api`
```

To access a specific API version where multiple versions are supported, the format of the URL is:

```
`https://<loadbalancer_ip_address>/api/v1`
```

## Input variables controlling an API request

You can control how an API call is processed through parameters and variables set in the HTTP request.

### HTTP methods

The HTTP methods supported by ONTAP tools for VMware vSphere REST API are shown in the following table.



Not all the HTTP methods are available at each of the REST endpoints.

HTTP method	Description
GET	Retrieves object properties on a resource instance or collection.
POST	Creates a new resource instance based on the supplied input.
DELETE	Deletes an existing resource instance.
PUT	Modifies an existing resource instance.

### Request headers

You should include several headers in the HTTP request.

#### Content-type

If the request body includes JSON, this header should be set to *application/json*.

#### Accept

This header should be set to *application/json*.

#### Authorization

Basic authentication should be set with the username and password encoded as a base64 string.

### Request body

The content of the request body varies depending on the specific call. The HTTP request body consists of one of the following:

- JSON object with input variables
- Empty

## Filtering objects

When issuing an API call that uses GET, you can limit or filter the returned objects based on any attribute. For example, you can specify an exact value to match:

```
<field>=<query value>
```

In addition to an exact match, other operators are available to return a set of objects over a range of values. ONTAP tools for VMware vSphere REST API supports the filtering operators shown in the table below.

Operator	Description
=	Equal to
<	Less than
>	Greater than
≤	Less than or equal to
≥	Greater than or equal to
UPDATE	Or
!	Not equal to
*	Greedy wildcard

You can also return a collection of objects based on whether a specific field is set or not set by using the **null** keyword or its negation **!null** as part of the query.



Any fields that are not set are generally excluded from matching queries.

## Requesting specific object fields

By default, issuing an API call using GET returns only the attributes that uniquely identify the object or objects. This minimum set of fields acts as a key for each object and varies based on the object type. You can select additional object properties using the `fields` query parameter in the following ways:

### Common or standard fields

Specify **fields=\*** to retrieve the most commonly used object fields. These fields are typically maintained in local server memory or require little processing to access. These are the same properties returned for an object after using GET with a URL path key (UUID).

### All fields

Specify **fields=\*\*** to retrieve all the object fields, including those requiring additional server processing to access.

## Custom field selection

Use **fields=<field\_name>** to specify the exact field you want. When requesting multiple fields, the values should be separated using commas without spaces.



As a best practice, you should always identify the specific fields you want. You should only retrieve the set of common fields or all fields when needed. Which fields are classified as common, and returned using *fields=\**, is determined by NetApp based on internal performance analysis. The classification of a field might change in future releases.

## Sorting objects in the output set

The records in a resource collection are returned in the default order defined by the object. You can change the order using the `order_by` query parameter with the field name and sort direction as follows:

```
order_by=<field name> asc|desc
```

For example, you can sort the type field in descending order followed by id in ascending order:

```
order_by=type desc, id asc
```

- If you specify a sort field but do not provide a direction, the values are sorted in ascending order.
- When including multiple parameters, you should separate the fields with a comma.

## Pagination when retrieving objects in a collection

When issuing an API call using GET to access a collection of objects of the same type, ONTAP tools for VMware vSphere attempts to return as many objects as possible based on two constraints. You can control each of these constraints using additional query parameters on the request. The first constraint reached for a specific GET request terminates the request and therefore limits the number of records returned.



If a request ends before iterating over all the objects, the response contains the link needed to retrieve the next batch of records.

## Limiting the number of objects

By default, ONTAP tools for VMware vSphere returns a maximum of 10,000 objects for a GET request. You can change this limit using the *max\_records* query parameter. For example:

```
max_records=20
```

The number of objects returned can be less than the maximum in effect, based on the related time constraint as well as the total number of objects in the system.

## Limiting the time used to retrieve the objects

By default, ONTAP tools for VMware vSphere returns as many objects as possible within the time allowed for the GET request. The default timeout is 15 seconds. You can change this limit using the *return\_timeout* query parameter. For example:

```
return_timeout=5
```

The number of objects returned can be less than the maximum in effect, based on the related constraint on the number of objects as well as the total number of objects in the system.

### Narrowing the result set

If needed, you can combine these two parameters with additional query parameters to narrow the result set. For example, the following returns up to 10 EMS events generated after the specified time:

```
time⇒ 2018-04-04T15:41:29.140265Z&max_records=10
```

You can issue multiple requests to page through the objects. Each subsequent API call should use a new time value based on the latest event in the last result set.

### Size properties

The input values used with some API calls as well as certain query parameters are numeric. Rather than provide an integer in bytes, you can optionally use a suffix as shown in the following table.

Suffix	Description
KB	KB Kilobytes (1024 bytes) or kibibytes
MB	MB Megabytes (KB x 1024 bytes) or mebibytes
GB	GB Gigabytes (MB x 1024 bytes) or gibibytes
TB	TB Terabytes (GB x 1024 bytes) or tebibytes
PB	PB Petabytes (TB x 1024 bytes) or pebibytes

## Access ONTAP tools for VMware vSphere API reference documentation through the Swagger UI

You can access the ONTAP REST API documentation through the Swagger UI at your local ONTAP system.

### Before you begin

You should have the following:

- IP address or host name of the ONTAP cluster management LIF
- Username and password for an account with authority to access the ONTAP REST API

### Steps

1. Type the URL in your browser and press **Enter**:  
`https://<ip_address>/docs/api`
2. Sign in using the ONTAP account

The ONTAP API documentation page is displayed with the API calls organized in major resource categories at the bottom.

3. As an example of an individual API call, scroll down to the **cluster** category and click **GET /cluster**.

# Get started with the REST API

You can quickly get started using ONTAP tools for VMware vSphere REST API. Accessing the API provides some perspective before you begin using it with the more complex workflow processes on a live setup.

## Hello World

You can run a simple command on your system to get started using ONTAP tools for VMware vSphere REST API and confirm its availability.

### Before you begin

- Ensure that the Curl utility is available on your system.
- IP address or host name of ONTAP tools for VMware vSphere server
- Username and password for an account with authority to access ONTAP tools for VMware vSphere REST API.



If your credentials include special characters, you need to format them in a way that is acceptable to Curl based on the shell you are using. For example, you can insert a backslash before each special character or wrap the entire `username:password` string in single quotes.

### Step

At the command line interface, run the following to retrieve the plug-in information:

```
curl -X GET -u username:password -k  
"https://<ip_address>/api/hosts?fields=IncludePluginInfo"
```

Example:

```
curl -X GET -u admin:password -k  
"'https://10.225.87.97/api/hosts?fields=IncludePluginInfo'"
```

## Workflows

### Storage discovery

Discovery interval can be configured as part of the configuration map. Scheduled discovery runs for every 60 mins. The API given here is to run the discovery on demand for a given storage backend which is added in the local scope.

Use the following API to run discovery:

```
POST  
/virtualization/api/v1/vcenters/{vcguid}/storage-backends/{id}/discovery-  
jobs
```



See Onboard storage backend (SVM or Cluster) workflow and get ID from post storage backend API response.

Discovery from this API endpoint is supported only for local scoped storage backends and not for the global scoped storage backends.

If the storage backend type is cluster, discovery implicitly runs for the child SVMs.

If the storage backend type is SVM, discovery only runs for the selected SVM.

Example:

To run discovery on a storage backend specified by ID

```
POST
/api/v1/vcenters/3fa85f64-5717-4562-b3fc-2c963f66afa6/storage-
backends/74e85f64-5717-4562-b3fc-2c963f669dde/discovery-jobs
```

You need to pass x-auth for the API. You can generate this x-auth from the new API added under Auth in Swagger.

```
/virtualization/api/v1/auth/vcenter-login
```

## SVM aggregate mapping requirements

To use SVM user credentials for provisioning datastores, ONTAP tools for VMware vSphere creates volumes on the aggregate specified in the datastores POST API.

ONTAP does not allow the creation of volumes on unmapped aggregates on an SVM using SVM user credentials. To resolve this, map the SVMs with the aggregates using the ONTAP REST API or CLI as described here.

ONTAP REST API:

```
PATCH "/api/svm/svms/f16f0935-5281-11e8-b94d-005056b46485"
'{"aggregates":{"name":["aggr1","aggr2","aggr3"]}}'
```

ONTAP CLI:

```
still15_vsim_ucs630f_aggr1 vserver show-aggregates
AvailableVserver Aggregate State Size Type SnapLock
Type
svm_test still15_vsim_ucs630f_aggr1
online 10.11GB vmdisk non-snaplock
```



## Onboard storage backend (SVM or Cluster) with a vCenter Server instance

Use the following API to onboard the storage backends and map the SVM to vCenter locally. See [Configure ONTAP user roles and privileges](#) section for the ONTAP SVM user privileges.

```
POST /virtualization/api/v1/vcenters/<vcguid>/storage-backends

{
  "hostname_or_ip": "172.21.103.107",
  "username": "svm11",
  "password": "xxxxxx"
}
```



The ID from the above API response is used in discovery.

You need to pass x-auth for the API. You can generate this x-auth from the new API added under Auth in Swagger.

```
/virtualization/api/v1/auth/vcenter-login
```

## Create vVols datastore

You can create vVols datastore with new volumes or with existing volumes. You can also create vVols datastore with the combination of existing volumes and new volumes.



Check to ensure root aggregates are not mapped to SVM.

Generate a JWT token before creating datastores or increase the SAML token expiry by setting 'Maximum Bearer Token Lifetime' to 60m on vCenter.

You need to pass x-auth for the API. You can generate this x-auth from the new API added under Auth in Swagger.

```
/virtualization/api/v1/auth/vcenter-login
```

1. Create vVols datastore with new volume.

Get Aggregate id, storage\_id(SVM uuid) using ONTAP REST API.

```
POST /virtualization/api/v1/vcenters/cdded9ad-6bsd-4c9e-b44g-691250bfe2df/vvols/datastores
```

Use the following URI to check the status:

+

```
`\https://xx.xx.xx.xxx:8443/virtualization/api/jobmanager/v2/jobs/<JobID>?
includeSubJobsAndTasks=true`
```

+

Request Body for NFS datastore

```
{
  "name": "nfsds1",
  "protocol": "nfs",
  "platform_type": "aff",
  "moref": "domain-c8",
  "volumes": [
    {
      "is_existing": false,
      "name": "vol_nfs_pvt",
      "size_in_mb": 2048000,
      "space_efficiency": "thin",
      "aggregate": {
        "id": "d7078b3c-3827-4ac9-9273-0a32909455c2"
      },
      "qos": {
        "min_iops": 200,
        "max_iops": 5000
      }
    }
  ],
  "storage_backend": {
    "storage_id": "654c67bc-0f75-11ee-8a8c-00a09860a3ff"
  }
}
```

Request body for iSCSI datastore:

```
{
  "name": "iscsi_custom",
  "protocol": "iscsi",
  "platform_type": "aff",
  "moref": "domain-c8",
  "volumes": [
    {
      "is_existing": false,
      "name": "iscsi_custom",
      "size_in_mb": 8034,
      "space_efficiency": "thin",
      "aggregate": {
        "id": "54fe5dd4-e461-49c8-bb2d-6d62c5d75af2"
      }
    }
  ],
  "custom_igroup_name": "igroup1",
  "storage_backend": {
    "storage_id": "eb9d33ab-1960-11ee-9506-00a0985c6d9b"
  }
}
```

. Create vVols datastore with existing volumes.

Get aggregate\_id and volume\_id using ONTAP REST API.

```
POST /virtualization/api/v1/vcenters/cdded9ad-6bsd-4c9e-b44g-691250bfe2df/vvols/datastores
```

#### Request Body

```
{
  "name" : "nfsds2",
  "protocol" : "nfs",
  "platform_type": "aff",
  "moref" : "domain-c8",
  "volumes" : [
    {
      "is_existing": true,
      "id": "e632a632-1412-11ee-8a8c-00a09860a3ff"
    }
  ],
  "storage_backend": {
    "storage_id": "33a8b6b3-10cd-11ee-8a8c-00a09860a3ff"
  }
}
```

## Mount and unmount a vVols datastore

You can mount a VMware Virtual Volumes (vVols) datastore to one or more additional hosts to provide storage access to additional hosts. You can unmount vVols datastore using APIs.

Use the following API to mount or unmount a vVols datastore.

You need to pass x-auth for the API. You can generate this x-auth from the new API added under Auth in Swagger.

```
/virtualization/api/v1/auth/vcenter-login
```

```
PATCH
/virtualization/api/v1/vcenters/{vcguid}/vvols/datastores/{moref}/hosts
```

Get vVol datastore moref from vCenter.

#### Request Body

```
{
  "operation": "mount",
  "morefs": [
    "host-7044"
  ],
}
```

Examples:

\* Mount on additional host

Use the following API to mount on additional host:

```
/api/v1/vcenters/cdded9ad-6bsd-4c9e-b44g-
691250bfe2df/vvols/datastores/datastore-24/hosts
```

Request Body

```
{
  "operation": "mount",
  "morefs": ["host-13"],
}
```

- Unmount on additional host

Use the following API to unmount on additional host:

```
/api/v1/vcenters/cdded9ad-6bsd-4c9e-b44g-
691250bfe2df/vvols/datastores/datastore-24/hosts
```

Request Body

```
{
  "operation": "unmount",
  "morefs": ["host-13"],
}
```

## Expand or shrink Storage of vVol Datastore

There are APIs to increase or decrease the available storage.

### Steps

Use the following API to expand or shrink the vVols datastore:

PATCH

/virtualization/api/v1/vcenters/{vcguid}/vvols/datastores/{moref}/volumes

## Examples

- Modify vVols datastore for add new volume

```
PATCH virtualization/api/v1/vcenters/cdded9ad-6bsd-4c9e-b44g-691250bfe2df/vvols/datastores/datastore-24/volumes
```

Request Body

```
{
  "operation": "grow",
  "volumes": [{
    "is_existing": false,
    "name": "exp3",
    "size_in_mb": 51200,
    "space_efficiency": "thin",
    "aggregate": {
      "id": "1466e4bf-c6d6-411a-91d5-c4f56210e1ab"
    },
    "storage_backend": {
      "storage_id": "13d86e4f-1fb1-11ee-9509-005056a75778"
    },
    "qos": {
      "max_iops": 5000
    }
  }]
}
```

- Modify vVols datastore for add existing volume

```
PATCH virtualization/api/v1/vcenters/cdded9ad-6bsd-4c9e-b44g-691250bfe2df/vvols/datastores/datastore-24/volumes
```

Request Body

```
{
  "operation": "grow",
  "volumes": [{
    "is_existing": true,
    "id": "vfded9ad-6bsd-4c9e-b44g-691250bfe2sd"
  }]
}
```

- Modify vVols datastore for remove volume and delete volume from storage

```
PATCH virtualization/api/v1/vcenters/cdded9ad-6bsd-4c9e-b44g-691250bfe2df/vvols/datastores/datastore-24/volumes?delete_volumes=true
```

Request Body

```
{
  "operation": "shrink",
  "volumes": [{
    "is_existing": true,
    "id": "vfded9ad-6bsd-4c9e-b44g-691250bfe2sd"
  }]
}
```

- Modify vVols datastore for remove volume and do not delete volume from storage

```
PATCH virtualization/api/v1/vcenters/cdded9ad-6bsd-4c9e-b44g-691250bfe2df/vvols/datastores/datastore-24/volumes?delete_volumes=false
```

Request Body

```
{
  "operation": "shrink",
  "volumes": [{
    "is_existing": true,
    "id": "vfded9ad-6bsd-4c9e-b44g-691250bfe2sd"
  }]
}
```

## Delete vVols datastore

A vVols datastore exists as long as at least one FlexVol volume is available on the datastore. If you want to delete a vVols datastore in a HA cluster, you should first unmount the datastore from all hosts within the HA cluster, and then delete the residing *.vsphere-HA* folder manually using the vCenter server user interface.

### Steps

Use the following API to delete vVols datastore.

```
DELETE
/virtualization/api/v1/vcenters/{vcguid}/vvols/datastores/{moref}
```

### Examples

- Delete vVols datastore and delete volumes from storage

```
DELETE /api/v1/vcenters/cdded9ad-6bsd-4c9e-b44g-691250bfe2df/vvols/datastores/datastore-28?delete_volumes=true
```



Delete vVols Datastore workflow deletes datastore-volumes if you have passed the delete\_volume flag as true irrespective of if the datastore-volume is managed or not managed.

- Delete vVols datastore and do not delete volumes from storage

```
DELETE /api/v1/vcenters/cdded9ad-6bsd-4c9e-b44g-691250bfe2df/vvols/datastores/datastore-28?delete_volumes=false
```

Response:

```
{
  "id": "1889"
}
```

## Manage Storage threshold

Use the following Get threshold API to retrieve the configured storage threshold limits for volume and aggregate.

```
GET/virtualization/api/v1/vcenters/{vcguid}/storage-thresholds
```

Examples:

Get the Storage thresholds per vCenter Server instance by vCenter guid

```
GET "/api/v1/vcenters/beded9ad-6bbb-4c9e-b4c6-691250bfe2da/storage-thresholds"
```

Use the following PATCH configure alarm for volume and aggregate to generate notification when configured threshold limits are reached.

```
PATCH/virtualization/api/v1/vcenters/{vcguid}/storage-thresholds
```

Examples:

Update the Storage thresholds per vCenter by vCenter guid. Default limits are 80% for nearly-full and 90% for

full.

### Modifying all threshold settings

```
{{{PATCH "/api/v1/vcenters/beded9ad-6bbb-4c9e-b4c6-691250bfe2da/storage-
thresholds"
Request Body
{
"volume":

{ "nearly_full_percent": 80, "full_percent": 90 }
,
"aggregate": {
"nearly_full_percent": 80,
"full_percent": 90
}
}}}}}}
```

## Manage network access

Use the following API to add IP addresses for whitelisting:

```
patch /api/v1/vcenters/{vcguid}/settings/ip-whitelist

{
  value: string
}

GET /api/v1/vcenters/{vcguid}/settings/ip-whitelist

{
  value: string
}
```



# Legal notices

Legal notices provide access to copyright statements, trademarks, patents, and more.

## Copyright

<https://www.netapp.com/company/legal/copyright/>

## Trademarks

NETAPP, the NETAPP logo, and the marks listed on the NetApp Trademarks page are trademarks of NetApp, Inc. Other company and product names may be trademarks of their respective owners.

<https://www.netapp.com/company/legal/trademarks/>

## Patents

A current list of NetApp owned patents can be found at:

<https://www.netapp.com/pdf.html?item=/media/11887-patentspage.pdf>

## Privacy policy

<https://www.netapp.com/company/legal/privacy-policy/>

## Open source

Notice files provide information about third-party copyright and licenses used in NetApp software.

[Notice for ONTAP tools for VMware vSphere 10.1](#)

## Copyright information

Copyright © 2025 NetApp, Inc. All Rights Reserved. Printed in the U.S. No part of this document covered by copyright may be reproduced in any form or by any means—graphic, electronic, or mechanical, including photocopying, recording, taping, or storage in an electronic retrieval system—without prior written permission of the copyright owner.

Software derived from copyrighted NetApp material is subject to the following license and disclaimer:

THIS SOFTWARE IS PROVIDED BY NETAPP “AS IS” AND WITHOUT ANY EXPRESS OR IMPLIED WARRANTIES, INCLUDING, BUT NOT LIMITED TO, THE IMPLIED WARRANTIES OF MERCHANTABILITY AND FITNESS FOR A PARTICULAR PURPOSE, WHICH ARE HEREBY DISCLAIMED. IN NO EVENT SHALL NETAPP BE LIABLE FOR ANY DIRECT, INDIRECT, INCIDENTAL, SPECIAL, EXEMPLARY, OR CONSEQUENTIAL DAMAGES (INCLUDING, BUT NOT LIMITED TO, PROCUREMENT OF SUBSTITUTE GOODS OR SERVICES; LOSS OF USE, DATA, OR PROFITS; OR BUSINESS INTERRUPTION) HOWEVER CAUSED AND ON ANY THEORY OF LIABILITY, WHETHER IN CONTRACT, STRICT LIABILITY, OR TORT (INCLUDING NEGLIGENCE OR OTHERWISE) ARISING IN ANY WAY OUT OF THE USE OF THIS SOFTWARE, EVEN IF ADVISED OF THE POSSIBILITY OF SUCH DAMAGE.

NetApp reserves the right to change any products described herein at any time, and without notice. NetApp assumes no responsibility or liability arising from the use of products described herein, except as expressly agreed to in writing by NetApp. The use or purchase of this product does not convey a license under any patent rights, trademark rights, or any other intellectual property rights of NetApp.

The product described in this manual may be protected by one or more U.S. patents, foreign patents, or pending applications.

LIMITED RIGHTS LEGEND: Use, duplication, or disclosure by the government is subject to restrictions as set forth in subparagraph (b)(3) of the Rights in Technical Data -Noncommercial Items at DFARS 252.227-7013 (FEB 2014) and FAR 52.227-19 (DEC 2007).

Data contained herein pertains to a commercial product and/or commercial service (as defined in FAR 2.101) and is proprietary to NetApp, Inc. All NetApp technical data and computer software provided under this Agreement is commercial in nature and developed solely at private expense. The U.S. Government has a non-exclusive, non-transferrable, nonsublicensable, worldwide, limited irrevocable license to use the Data only in connection with and in support of the U.S. Government contract under which the Data was delivered. Except as provided herein, the Data may not be used, disclosed, reproduced, modified, performed, or displayed without the prior written approval of NetApp, Inc. United States Government license rights for the Department of Defense are limited to those rights identified in DFARS clause 252.227-7015(b) (FEB 2014).

## Trademark information

NETAPP, the NETAPP logo, and the marks listed at <http://www.netapp.com/TM> are trademarks of NetApp, Inc. Other company and product names may be trademarks of their respective owners.