



Monitor the reachability of network ports in ONTAP 9.8 and later

ONTAP 9

Barb Einarsen
May 15, 2021

Table of Contents

Monitor the reachability of network ports in ONTAP 9.8 and later 1

Monitor the reachability of network ports in ONTAP 9.8 and later

Reachability monitoring is built into ONTAP 9.8 and later. Use this monitoring to identify when the physical network topology does not match the ONTAP configuration. In some cases, ONTAP can repair port reachability. In other cases, additional steps are required.

About this task

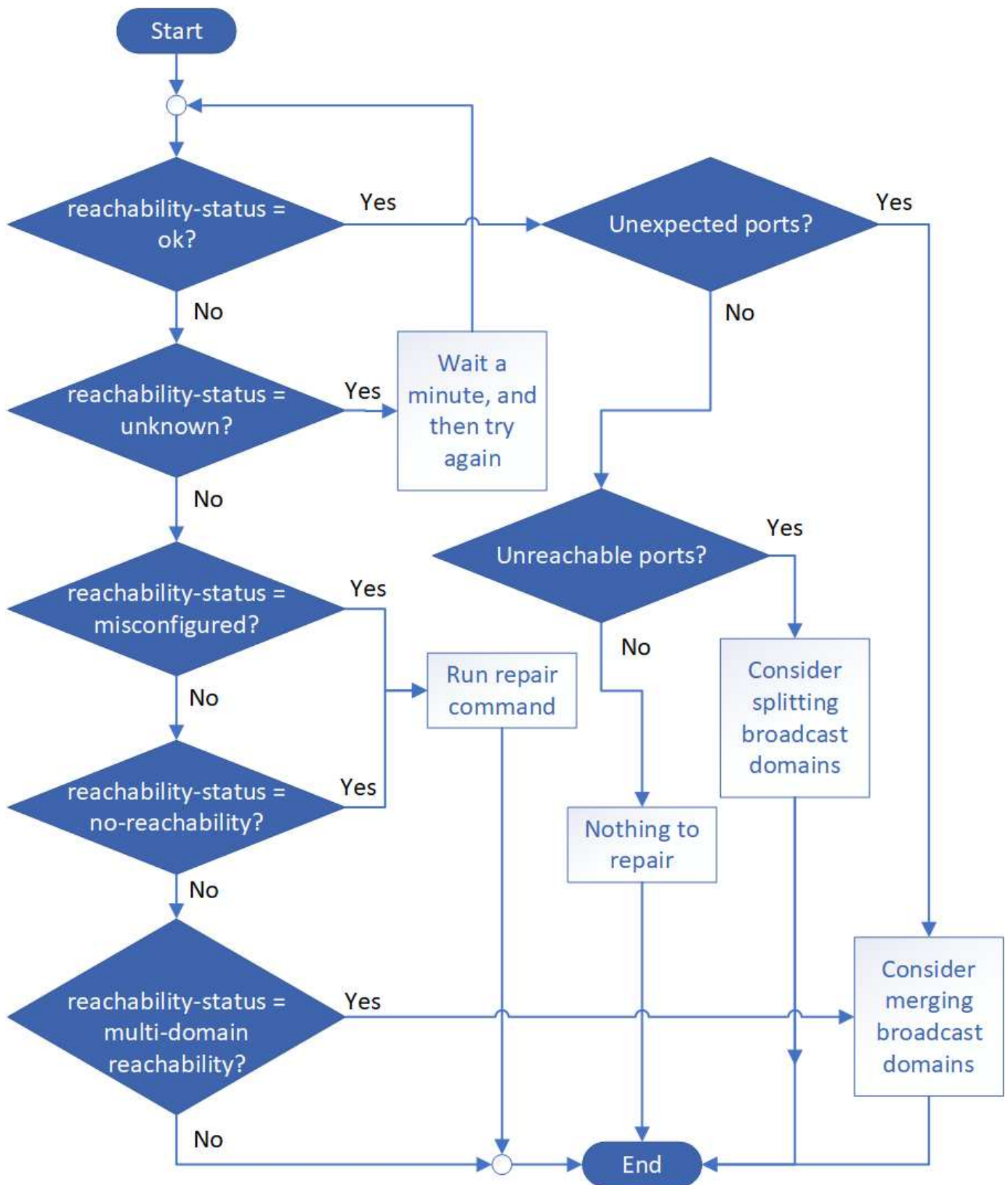
Use these commands to verify, diagnose, and repair network misconfigurations that stem from the ONTAP configuration not matching either the physical cabling or the network switch configuration.

Step

1. View port reachability:

```
network port reachability show
```

2. Use the following decision tree and table to determine the next step, if any.



Reachability-status	Description
ok	<p>The port has layer 2 reachability to its assigned broadcast domain.</p> <p>If the reachability-status is "ok", but there are "unexpected ports", consider merging one or more broadcast domains. For more information, see the following <i>Unexpected ports</i> row.</p> <p>If the reachability-status is "ok", but there are "unreachable ports", consider splitting one or more broadcast domains. For more information, see the following <i>Unreachable ports</i> row.</p> <p>If the reachability-status is "ok", and there are no unexpected or unreachable ports, your configuration is correct.</p>
Unexpected ports	<p>The port has layer 2 reachability to its assigned broadcast domain; however, it also has layer 2 reachability to at least one other broadcast domain.</p> <p>Examine the physical connectivity and switch configuration to determine if it is incorrect or if the port's assigned broadcast domain needs to be merged with one or more broadcast domains.</p> <p>For more information, see Merge broadcast domains.</p>
Unreachable ports	<p>If a single broadcast domain has become partitioned into two different reachability sets, you can split a broadcast domain to synchronize the ONTAP configuration with the physical network topology.</p> <p>Typically, the list of unreachable ports defines the set of ports that should be split into another broadcast domain after you have verified that the physical and switch configuration is accurate.</p> <p>For more information, see Split broadcast domains.</p>
misconfigured-reachability	<p>The port does not have layer 2 reachability to its assigned broadcast domain; however, the port does have layer 2 reachability to a different broadcast domain.</p> <p>You can repair the port reachability. When you run the following command, the system will assign the port to the broadcast domain to which it has reachability:</p> <pre>network port reachability repair -node -port</pre> <p>For more information, see Repair port reachability.</p>

Reachability-status	Description
no-reachability	<p>The port does not have layer 2 reachability to any existing broadcast domain.</p> <p>You can repair the port reachability. When you run the following command, the system will assign the port to a new automatically created broadcast domain in the Default IPspace:</p> <pre>network port reachability repair -node -port</pre> <p>For more information, see Repair port reachability.</p>
multi-domain-reachability	<p>The port has layer 2 reachability to its assigned broadcast domain; however, it also has layer 2 reachability to at least one other broadcast domain.</p> <p>Examine the physical connectivity and switch configuration to determine if it is incorrect or if the port's assigned broadcast domain needs to be merged with one or more broadcast domains.</p> <p>For more information, see Merge broadcast domains or Repair port reachability.</p>
unknown	<p>If the reachability-status is "unknown", then wait a few minutes and try the command again.</p>

After you repair a port, you need to check for and resolve displaced LIFs and VLANs. If the port was part of an interface group, you also need to understand what happened to that interface group. For more information, see [Repair port reachability](#).

Copyright Information

Copyright © 2021 NetApp, Inc. All rights reserved. Printed in the U.S. No part of this document covered by copyright may be reproduced in any form or by any means-graphic, electronic, or mechanical, including photocopying, recording, taping, or storage in an electronic retrieval system-without prior written permission of the copyright owner.

Software derived from copyrighted NetApp material is subject to the following license and disclaimer:

THIS SOFTWARE IS PROVIDED BY NETAPP "AS IS" AND WITHOUT ANY EXPRESS OR IMPLIED WARRANTIES, INCLUDING, BUT NOT LIMITED TO, THE IMPLIED WARRANTIES OF MERCHANTABILITY AND FITNESS FOR A PARTICULAR PURPOSE, WHICH ARE HEREBY DISCLAIMED. IN NO EVENT SHALL NETAPP BE LIABLE FOR ANY DIRECT, INDIRECT, INCIDENTAL, SPECIAL, EXEMPLARY, OR CONSEQUENTIAL DAMAGES (INCLUDING, BUT NOT LIMITED TO, PROCUREMENT OF SUBSTITUTE GOODS OR SERVICES; LOSS OF USE, DATA, OR PROFITS; OR BUSINESS INTERRUPTION) HOWEVER CAUSED AND ON ANY THEORY OF LIABILITY, WHETHER IN CONTRACT, STRICT LIABILITY, OR TORT (INCLUDING NEGLIGENCE OR OTHERWISE) ARISING IN ANY WAY OUT OF THE USE OF THIS SOFTWARE, EVEN IF ADVISED OF THE POSSIBILITY OF SUCH DAMAGE.

NetApp reserves the right to change any products described herein at any time, and without notice. NetApp assumes no responsibility or liability arising from the use of products described herein, except as expressly agreed to in writing by NetApp. The use or purchase of this product does not convey a license under any patent rights, trademark rights, or any other intellectual property rights of NetApp.

The product described in this manual may be protected by one or more U.S. patents, foreign patents, or pending applications.

RESTRICTED RIGHTS LEGEND: Use, duplication, or disclosure by the government is subject to restrictions as set forth in subparagraph (c)(1)(ii) of the Rights in Technical Data and Computer Software clause at DFARS 252.277-7103 (October 1988) and FAR 52-227-19 (June 1987).

Trademark Information

NETAPP, the NETAPP logo, and the marks listed at <http://www.netapp.com/TM> are trademarks of NetApp, Inc. Other company and product names may be trademarks of their respective owners.