



View status information

SnapCenter Plug-in for VMware vSphere

Madhulika Kola, Ronya Robinson
August 31, 2021

Table of Contents

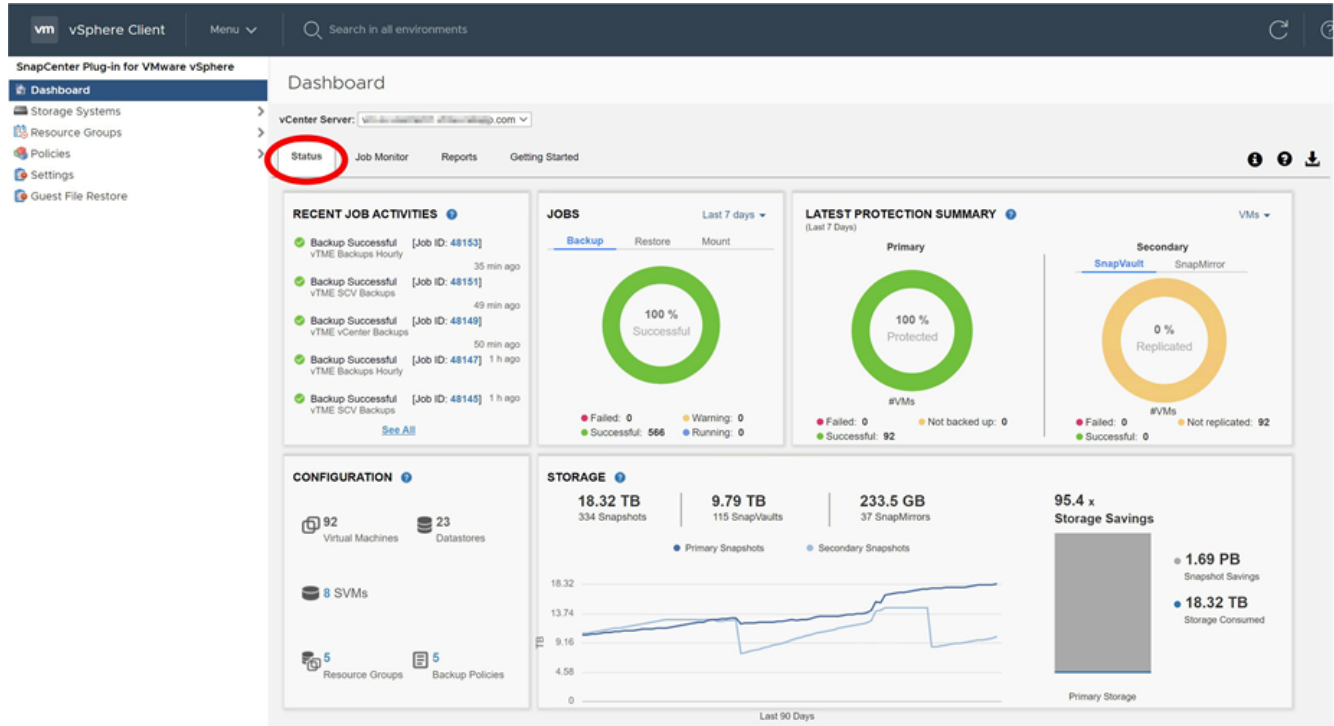
View status information 1

View status information

You can view status information on the vSphere web client Dashboard. Status information is updated once an hour.

Steps

1. In the left Navigator pane of the vSphere web client, click **Dashboard**, select a vCenter Server, and then click the **Status** tab.



2. View overview status information or click a link for more details, as listed in the following table.

This dashboard tile...	Displays the following information...
Recent job activities	<p>The three to five most recent backup, restore, and mount jobs.</p> <ul style="list-style-type: none"> • Click on a job ID to see more details about that job. • Click See all to go to the Job Monitor tab for more details on all jobs.
Jobs	<p>A count of each job type (backup, restore, and mount) performed within the selected time window. Hover the cursor over a section of the chart to see more details for that category.</p>

This dashboard tile...	Displays the following information...
Latest Protection Summary	<p>Summaries of the data protection status of primary and secondary VMs or datastores within the selected time window.</p> <ul style="list-style-type: none"> • Click the drop-down menu to select VMs or Datastores. • For secondary storage, select SnapVault or SnapMirror. • Hover the cursor over a section of a chart to see the count of VMs or Datastores in that category. In the Successful category, the most recent backup is listed for each resource. • You can change the time window by editing the configuration file. The default is 7 days. For more information, see Customize your configuration. • Internal counters are updated after each primary or secondary backup. The dashboard tile is refreshed every six hours. The refresh time cannot be changed. Note: If you use a mirror-vault protection policy, then the counters for the protection summary are displayed in the SnapVault summary chart, not in the SnapMirror chart.
Configuration	The total number of each type of object managed by the SnapCenter Plug-in for VMware vSphere.
Storage	<p>The total number of Snapshot copies, SnapVault, and SnapMirror Snapshot copies, generated and the amount of storage used for primary and secondary Snapshot copies. The line graph separately plots primary and secondary storage consumption on a day-by-day basis over a rolling 90-day period. Storage information is updated once every 24 hours at 12:00 A.M.</p> <p>Storage Savings is the ratio of logical capacity (Snapshot copy savings plus storage consumed) to the physical capacity of primary storage. The bar chart illustrates the storage savings.</p> <p>Hover the cursor over a line on the chart to see detailed day-by-day results.</p>

Copyright Information

Copyright © 2021 NetApp, Inc. All rights reserved. Printed in the U.S. No part of this document covered by copyright may be reproduced in any form or by any means-graphic, electronic, or mechanical, including photocopying, recording, taping, or storage in an electronic retrieval system-without prior written permission of the copyright owner.

Software derived from copyrighted NetApp material is subject to the following license and disclaimer:

THIS SOFTWARE IS PROVIDED BY NETAPP "AS IS" AND WITHOUT ANY EXPRESS OR IMPLIED WARRANTIES, INCLUDING, BUT NOT LIMITED TO, THE IMPLIED WARRANTIES OF MERCHANTABILITY AND FITNESS FOR A PARTICULAR PURPOSE, WHICH ARE HEREBY DISCLAIMED. IN NO EVENT SHALL NETAPP BE LIABLE FOR ANY DIRECT, INDIRECT, INCIDENTAL, SPECIAL, EXEMPLARY, OR CONSEQUENTIAL DAMAGES (INCLUDING, BUT NOT LIMITED TO, PROCUREMENT OF SUBSTITUTE GOODS OR SERVICES; LOSS OF USE, DATA, OR PROFITS; OR BUSINESS INTERRUPTION) HOWEVER CAUSED AND ON ANY THEORY OF LIABILITY, WHETHER IN CONTRACT, STRICT LIABILITY, OR TORT (INCLUDING NEGLIGENCE OR OTHERWISE) ARISING IN ANY WAY OUT OF THE USE OF THIS SOFTWARE, EVEN IF ADVISED OF THE POSSIBILITY OF SUCH DAMAGE.

NetApp reserves the right to change any products described herein at any time, and without notice. NetApp assumes no responsibility or liability arising from the use of products described herein, except as expressly agreed to in writing by NetApp. The use or purchase of this product does not convey a license under any patent rights, trademark rights, or any other intellectual property rights of NetApp.

The product described in this manual may be protected by one or more U.S. patents, foreign patents, or pending applications.

RESTRICTED RIGHTS LEGEND: Use, duplication, or disclosure by the government is subject to restrictions as set forth in subparagraph (c)(1)(ii) of the Rights in Technical Data and Computer Software clause at DFARS 252.277-7103 (October 1988) and FAR 52-227-19 (June 1987).

Trademark Information

NETAPP, the NETAPP logo, and the marks listed at <http://www.netapp.com/TM> are trademarks of NetApp, Inc. Other company and product names may be trademarks of their respective owners.