



# Installing Snap Creator Agent on Windows

## Snap Creator Framework

NetApp  
February 12, 2021

# Table of Contents

Installing Snap Creator Agent on Windows ..... 1

# Installing Snap Creator Agent on Windows

You can install Snap Creator Agent on Windows hosts by using the Windows installer.

- JRE 1.8 Update 72 or later must be installed.
  - You must have administrator-level privileges.
  - The default port (9090) or another network port must be available.
  - Snap Creator must be downloaded.
1. Launch the Snap Creator installer by double-clicking the Snap\_Creator\_Frameworkrelease-Windowsversion.exe file icon (for example, Snap\_Creator\_Framework4.1.0-Windows64.exe).
  2. On the Welcome page, click **Next** to start the installation.
  3. Review and accept the terms of the license agreement.
  4. On the Choose Install Type page, configure the following settings to suit various installation types:

- **Select installation type**

Select **Agent**.

- **Start agent as service**

Select this option to install and start the **snapcreatoragentservice** immediately after the installation process is complete.

If this option is not selected, the Agent port field is disabled.



If you do not select this option, the service is not installed, and you must manually start Snap Creator Agent by running a batch script from a command prompt.

- **Enter your system IP**

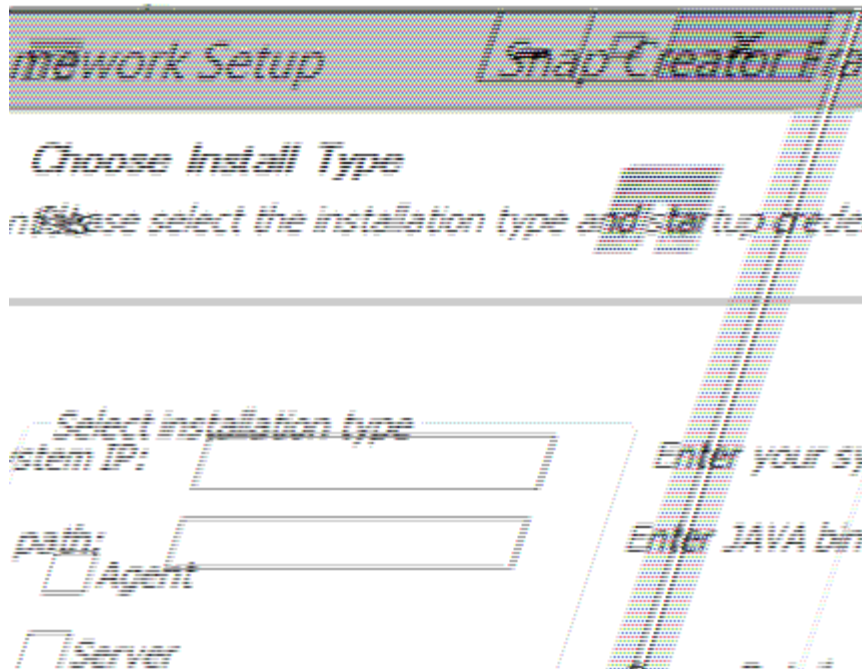
Select this option to provide the IP address of the system on which Snap Creator Server or Snap Creator Agent is installed. This option is used for generating the SSL certificate during the Snap Creator installation process.

- **Enter JAVA bin path**

Select this option to provide the Java bin path to locate the keytool utility. The keytool utility is used to generate an SSL certificate during the Snap Creator installation process.

- **Agent port**

Accept the default port (9090) or specify a port number.



1. Click **Next**.
2. On the Choose Install Location page, either enter a Snap Creator installation path or accept the default path (C:\Program Files\NetApp\Snap\_Creator\_Framework), and then click **Next**.



If you plan to use the IBM Domino plug-in, you must select a location other than the Domino data folder.

3. On the Choose Start Menu Folder page, either customize the folder in which Snap Creator should appear in the Windows Start Menu or accept the default folder option, and then click **Install**.
4. After the installation finishes, click **Next**.

During the Snap Creator Agent service installation, a command prompt is displayed if a service was selected as part of the installation options. This process attempts to start existing services; therefore, it is common to see failure messages listed as part of this step, which you should ignore.

5. Click **Finish** to close the Windows installer.

If you did not select the **Start agent as service** option during the installation process, you must manually start Snap Creator Agent.

## Related information

[Installing Java on Snap Creator hosts](#)

[Downloading the Snap Creator software](#)

[Starting the Agent from a command prompt](#)

## Copyright Information

Copyright © 2021 NetApp, Inc. All rights reserved. Printed in the U.S. No part of this document covered by copyright may be reproduced in any form or by any means-graphic, electronic, or mechanical, including photocopying, recording, taping, or storage in an electronic retrieval system- without prior written permission of the copyright owner.

Software derived from copyrighted NetApp material is subject to the following license and disclaimer:

THIS SOFTWARE IS PROVIDED BY NETAPP "AS IS" AND WITHOUT ANY EXPRESS OR IMPLIED WARRANTIES, INCLUDING, BUT NOT LIMITED TO, THE IMPLIED WARRANTIES OF MERCHANTABILITY AND FITNESS FOR A PARTICULAR PURPOSE, WHICH ARE HEREBY DISCLAIMED. IN NO EVENT SHALL NETAPP BE LIABLE FOR ANY DIRECT, INDIRECT, INCIDENTAL, SPECIAL, EXEMPLARY, OR CONSEQUENTIAL DAMAGES (INCLUDING, BUT NOT LIMITED TO, PROCUREMENT OF SUBSTITUTE GOODS OR SERVICES; LOSS OF USE, DATA, OR PROFITS; OR BUSINESS INTERRUPTION) HOWEVER CAUSED AND ON ANY THEORY OF LIABILITY, WHETHER IN CONTRACT, STRICT LIABILITY, OR TORT (INCLUDING NEGLIGENCE OR OTHERWISE) ARISING IN ANY WAY OUT OF THE USE OF THIS SOFTWARE, EVEN IF ADVISED OF THE POSSIBILITY OF SUCH DAMAGE.

NetApp reserves the right to change any products described herein at any time, and without notice. NetApp assumes no responsibility or liability arising from the use of products described herein, except as expressly agreed to in writing by NetApp. The use or purchase of this product does not convey a license under any patent rights, trademark rights, or any other intellectual property rights of NetApp.

The product described in this manual may be protected by one or more U.S. patents, foreign patents, or pending applications.

RESTRICTED RIGHTS LEGEND: Use, duplication, or disclosure by the government is subject to restrictions as set forth in subparagraph (c)(1)(ii) of the Rights in Technical Data and Computer Software clause at DFARS 252.277-7103 (October 1988) and FAR 52-227-19 (June 1987).

## Trademark Information

NETAPP, the NETAPP logo, and the marks listed at <http://www.netapp.com/TM> are trademarks of NetApp, Inc. Other company and product names may be trademarks of their respective owners.