



Installing the Snap Creator Agent

Snap Creator Framework

NetApp
April 09, 2021

This PDF was generated from https://docs.netapp.com/us-en/snap-creator-framework/installation/task_starting_the_agent_from_a_command_prompt.html on April 09, 2021. Always check docs.netapp.com for the latest.

Table of Contents

- Installing the Snap Creator Agent 1
 - Installing Snap Creator Agent on Windows 1
 - Installing the Snap Creator Agent on UNIX-based systems. 3
 - Changing the Snap Creator Agent port after installation 6

Installing the Snap Creator Agent

You can install the Snap Creator Agent on Windows and UNIX hosts.



Although installing and running multiple agents on a single host is allowed, the best practice is to use a single agent per host.

If you plan to use the IBM Domino plug-in, the plug-in requires Snap Creator Agent to be installed in a location other than the Domino data folder.

Installing Snap Creator Agent on Windows

You can install Snap Creator Agent on Windows hosts by using the Windows installer.

- JRE 1.8 Update 72 or later must be installed.
 - You must have administrator-level privileges.
 - The default port (9090) or another network port must be available.
 - Snap Creator must be downloaded.
1. Launch the Snap Creator installer by double-clicking the Snap_Creator_Frameworkrelease-Windowsversion.exe file icon (for example, Snap_Creator_Framework4.1.0-Windows64.exe).
 2. On the Welcome page, click **Next** to start the installation.
 3. Review and accept the terms of the license agreement.
 4. On the Choose Install Type page, configure the following settings to suit various installation types:

- **Select installation type**

Select **Agent**.

- **Start agent as service**

Select this option to install and start the **snapcreatoragentservice** immediately after the installation process is complete.

If this option is not selected, the Agent port field is disabled.



If you do not select this option, the service is not installed, and you must manually start Snap Creator Agent by running a batch script from a command prompt.

- **Enter your system IP**

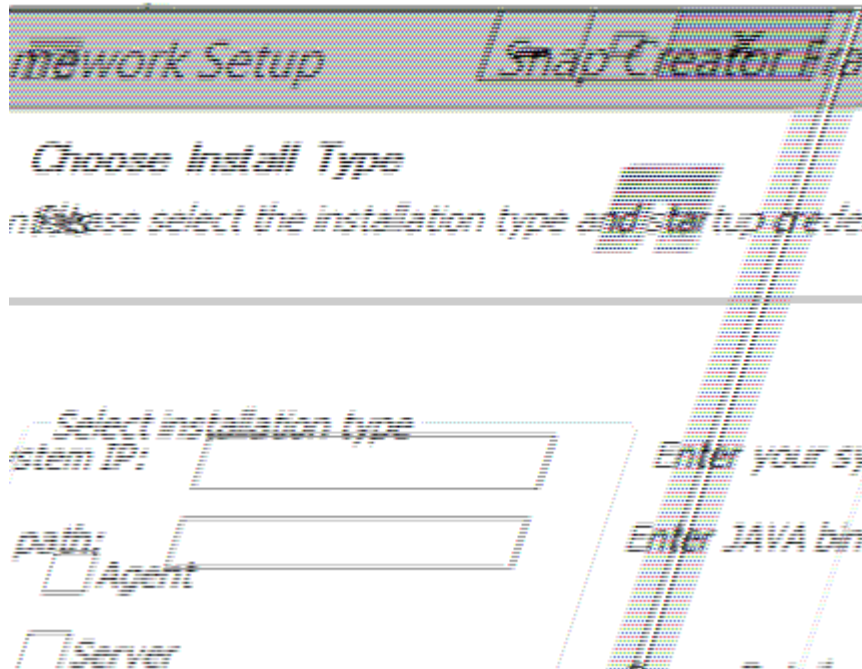
Select this option to provide the IP address of the system on which Snap Creator Server or Snap Creator Agent is installed. This option is used for generating the SSL certificate during the Snap Creator installation process.

- **Enter JAVA bin path**

Select this option to provide the Java bin path to locate the keytool utility. The keytool utility is used to generate an SSL certificate during the Snap Creator installation process.

- **Agent port**

Accept the default port (9090) or specify a port number.



1. Click **Next**.
2. On the Choose Install Location page, either enter a Snap Creator installation path or accept the default path (C:\Program Files\NetApp\Snap_Creator_Framework), and then click **Next**.



If you plan to use the IBM Domino plug-in, you must select a location other than the Domino data folder.

3. On the Choose Start Menu Folder page, either customize the folder in which Snap Creator should appear in the Windows Start Menu or accept the default folder option, and then click **Install**.
4. After the installation finishes, click **Next**.

During the Snap Creator Agent service installation, a command prompt is displayed if a service was selected as part of the installation options. This process attempts to start existing services; therefore, it is common to see failure messages listed as part of this step, which you should ignore.

5. Click **Finish** to close the Windows installer.

If you did not select the **Start agent as service** option during the installation process, you must manually start Snap Creator Agent.

Related information

[Installing Java on Snap Creator hosts](#)

[Downloading the Snap Creator software](#)

[Starting the Agent from a command prompt](#)

Starting the Agent from a command prompt

You can manually start the Snap Creator Agent from a command prompt by running a batch script (scAgent.bat).

Typically, you should follow this procedure only if you did not select the **Start agent as service** option during the installation process.

You can also schedule the batch script (scAgent.bat) to run at startup through the Windows task scheduler. For details about using the Windows task scheduler, see the documentation for your Windows operating system.

1. Open a command prompt and enter the following commands:

```
cd \install_path\scAgentrelease-version\bin\  
scAgent.bat start
```

```
cd \Program Files\NetApp\Snap_Creator_Framework\scAgent4.1.0\bin\  
scAgent.bat start
```

Because the batch script (scAgent.bat) runs Snap Creator in the foreground, the Snap Creator Agent continues to run only as long as the command prompt is open. Closing the command prompt will quit the Snap Creator Agent. To run Snap Creator in the background, the Snap Creator Agent service should be used.

Installing the Snap Creator Agent on UNIX-based systems

The Snap Creator Agent runs on any open systems platform (AIX, HP-UX, Linux, and Solaris).

JRE 1.8 Update 72 or later must be installed. For details, see information in related links about installing Java on Snap Creator servers.

The person performing the installation must have sufficient access and privileges.

The default port for the Snap Creator Agent is 9090. Use netstat or a similar tool to verify that the network port (9090 or the port that you want to use) is available and is not already in use (for example, enter: `netstat -nap | grep 9090`).

Snap Creator should already be downloaded. For details, see information about downloading the Snap Creator software.

Linux is used here as the example platform.

1. Copy the downloaded Snap Creator tar.gz file to the location where you want to install Snap Creator Agent.



If you plan to use the IBM Domino plug-in, select a location other than the Domino data folder.

- a. To make a subdirectory, enter the following command with the directory name:

```
mkdir snap_creator_directory
```

```
mkdir /SC_41
```

b. Copy the Snap Creator tar.gz file to the newly created directory by entering the following command:

```
cp NetApp_Snap_Creator_Frameworkrelease-os.tar.gz  
/snap_creator_directory
```

```
cp NetApp_Snap_Creator_Framework4.1.0-Linux32.tar.gz  
/SC_41
```

2. Change to the directory to where the Snap Creator Framework .tar file is located and extract the file by entering the following commands:



Depending on the UNIX environment, you might be required to unzip the file before entering the tar command.

```
cd snap_creator_directory  
tar -xvf NetApp_Snap_Creator_Frameworkrelease-os.tar.gz
```

- `snap_creator_directory` is the location where Snap Creator will be installed.
- `release` is the current release of the Snap Creator software package.
- `os` is the operating system.

```
cd /sc_41  
tar -xvf NetApp_Snap_Creator_Framework4.1.0-Linux32.tar.gz
```

This extracts both the Server and the Agent software. Typically, only the Snap Creator Server is configured. The agents normally reside on the database or application servers to be protected as seen in the following example:

+

```
NetApp_Snap_Creator_Framework4.1.0-Linux32.tar.gz  scServer4.1.0  
scAgent4.1.0
```

3. Enter the following commands and respond to the prompts shown in the example to set up the Snap Creator Agent.

```

cd scAgent*
./snapcreator --setup
Welcome to the NetApp Snap Creator Framework release-version!
\#\#\# Installation options \#\#\#
01. NetApp Snap Creator Framework release-version Agent
Select install option (enter a number or "q" to quit): <Enter 01>

END USER LICENSE AGREEMENT
<...the EULA displays...>

Do you accept the End User License Agreement (y|n): <Enter y>

Enter Snap Creator server port [9090]: <Enter agent port>

INFO: Updated NetApp Snap Creator Framework release-version
/install_path/scAgentrelease-version/engine/etc/agent.properties

INFO: To start scAgent please do the following:

/install_path/scAgentrelease-version/bin/scAgent start

```

4. Start the Snap Creator Agent:

```
/install_path/scAgentrelease-version/bin/scAgent start
```



To have the Snap Creator Agent run automatically at startup, add the start command to a script.

The steps to create a script differ slightly depending on the operating system used and the preferences of the system administrator managing the server. Generally, the start command for the Snap Creator Agent can be added to a file beginning with S9 (for example, S99scAgent) that is placed in the /path/to/rc2.d subdirectory. The rc2.d subdirectory is commonly located under /etc/, but this can depend on the host operating system and the particular configuration of the server. For more information, refer to the documentation of the operating system in use.

The following message appears:

```

Starting scAgent:
  Watchdog: Running
  Agent: Running

```

Related information

[Installing Java on Snap Creator hosts](#)

Changing the Snap Creator Agent port after installation

To change the port on which the Snap Creator Agent is listening, you can make a change in the `agent.properties` file and restart the agent.

The procedure for changing the Snap Creator Agent port is the same for Windows and UNIX. The following procedure uses examples from the UNIX environment.

1. Log in to the system on which the Snap Creator Agent is running, and switch to the `etc` subdirectory within the installation directory.

```
cd /install_path/scAgent4.3.0/etc
```

2. Open the `agent.properties` file using a text editor.
3. Change the value of the `DEFAULT_PORT` parameter to the new port (by default, the port is 9090).

For example, to use port 9191, change the `DEFAULT_PORT` parameter as follows:

```
DEFAULT_PORT=9191
```

4. Save and close the `agent.properties` file.
5. Restart the Snap Creator Agent.

```
/install_path/scAgent4.3.0/bin/scAgent restart
```



If the Snap Creator Agent is running when any changes are made to the `allowed_commands.config` file or the `agent.properties` file, then the agent must be restarted.

Copyright Information

Copyright © 2021 NetApp, Inc. All rights reserved. Printed in the U.S. No part of this document covered by copyright may be reproduced in any form or by any means-graphic, electronic, or mechanical, including photocopying, recording, taping, or storage in an electronic retrieval system- without prior written permission of the copyright owner.

Software derived from copyrighted NetApp material is subject to the following license and disclaimer:

THIS SOFTWARE IS PROVIDED BY NETAPP "AS IS" AND WITHOUT ANY EXPRESS OR IMPLIED WARRANTIES, INCLUDING, BUT NOT LIMITED TO, THE IMPLIED WARRANTIES OF MERCHANTABILITY AND FITNESS FOR A PARTICULAR PURPOSE, WHICH ARE HEREBY DISCLAIMED. IN NO EVENT SHALL NETAPP BE LIABLE FOR ANY DIRECT, INDIRECT, INCIDENTAL, SPECIAL, EXEMPLARY, OR CONSEQUENTIAL DAMAGES (INCLUDING, BUT NOT LIMITED TO, PROCUREMENT OF SUBSTITUTE GOODS OR SERVICES; LOSS OF USE, DATA, OR PROFITS; OR BUSINESS INTERRUPTION) HOWEVER CAUSED AND ON ANY THEORY OF LIABILITY, WHETHER IN CONTRACT, STRICT LIABILITY, OR TORT (INCLUDING NEGLIGENCE OR OTHERWISE) ARISING IN ANY WAY OUT OF THE USE OF THIS SOFTWARE, EVEN IF ADVISED OF THE POSSIBILITY OF SUCH DAMAGE.

NetApp reserves the right to change any products described herein at any time, and without notice. NetApp assumes no responsibility or liability arising from the use of products described herein, except as expressly agreed to in writing by NetApp. The use or purchase of this product does not convey a license under any patent rights, trademark rights, or any other intellectual property rights of NetApp.

The product described in this manual may be protected by one or more U.S. patents, foreign patents, or pending applications.

RESTRICTED RIGHTS LEGEND: Use, duplication, or disclosure by the government is subject to restrictions as set forth in subparagraph (c)(1)(ii) of the Rights in Technical Data and Computer Software clause at DFARS 252.277-7103 (October 1988) and FAR 52-227-19 (June 1987).

Trademark Information

NETAPP, the NETAPP logo, and the marks listed at <http://www.netapp.com/TM> are trademarks of NetApp, Inc. Other company and product names may be trademarks of their respective owners.