



# Installing the Snap Creator Server

## Snap Creator Framework

NetApp  
April 09, 2021

This PDF was generated from [https://docs.netapp.com/us-en/snap-creator-framework/installation/task\\_starting\\_the\\_server\\_from\\_a\\_command\\_prompt.html](https://docs.netapp.com/us-en/snap-creator-framework/installation/task_starting_the_server_from_a_command_prompt.html) on April 09, 2021. Always check docs.netapp.com for the latest.

# Table of Contents

- Installing the Snap Creator Server ..... 1
  - Installing the Snap Creator Server on a Windows host ..... 1
  - Installing the Snap Creator Server on UNIX-based systems ..... 4

# Installing the Snap Creator Server

You can install the Snap Creator Server on Windows and UNIX hosts.

In a typical installation, the Snap Creator Server and the Snap Creator Agent are installed on separate hosts. However, in some instances, the Server and Agent can be installed at the same time. In this setup, only the Server is configured during the installation.

## Installing the Snap Creator Server on a Windows host

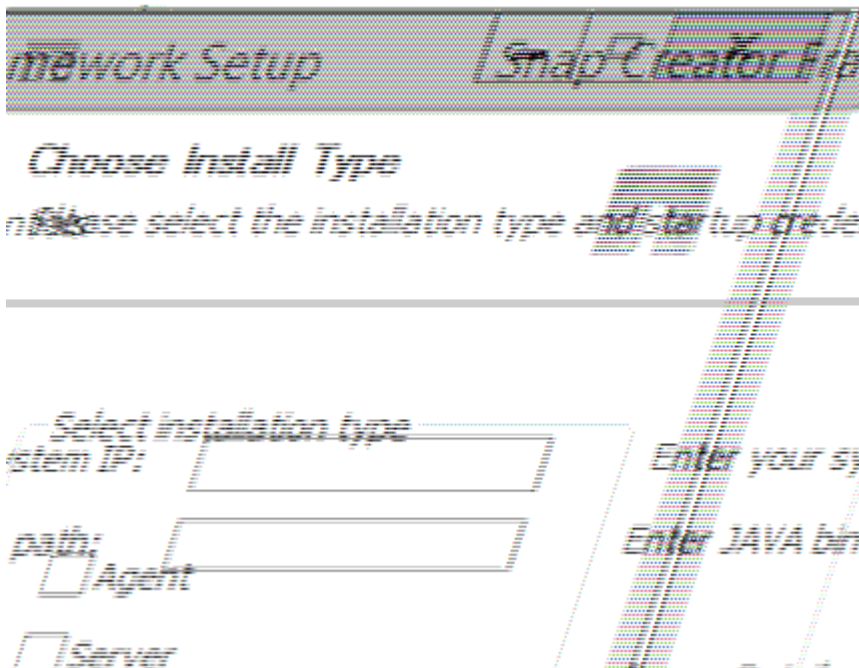
You can install Snap Creator Server on a Windows host by using Windows installer.

- JRE 1.8 Update 72 or later must be installed.
- The person performing the installation must have admin-level privileges to perform the installation.
- The default port for the Snap Creator Server must be 8443.

You can use netstat or a similar tool to verify that the network port that you want to use (as long as the port supports HTTPS) is available and is not already in use (for example, Windows: `netstat -na | find "8443"`).

- You must have already downloaded Snap Creator.
  1. Double-click the Snap\_Creator\_Frameworkrelease-Windowsversion.exe file.

To launch the Snap Creator installer, you would use Snap\_Creator\_Framework4.1.0-Windows64.exe.
  2. On the Welcome page, click **Next** to start the installation.
  3. Read and accept the terms of the license agreement.
  4. On the **Choose Install Type** page, change the settings to fit various installation types, and then click **Next**.



- **Select installation type**

Select **Server**. Both the Snap Creator Server and Snap Creator Agent can be installed at the same time if you want both on the same system.

- **Start server as service**

Select this option to automatically install and start the `snapcreatorserverservice` service immediately after the installation process is complete. If it is not selected, the **Server port** field is disabled.



If you do not select this option, the service is not installed and you need to manually start the Snap Creator Server by running a batch script from a command prompt.

- **Enter your system IP**

Select this option to provide the IP address of the system on which Snap Creator Server or Snap Creator Agent is installed. This option is used for generating the SSL certificate during Snap Creator installation.

- **Enter JAVA bin path**

Select this option to provide the Java bin path to locate the keytool utility. Keytool is used to generate an SSL certificate during the Snap Creator installation.

- **Server port**

Accept the default port of `8443` or specify the port number.

5. Configure the **Profile Setup** page, and then click **Next**.

The information entered on the **Profile Setup** page is used to set up the profile required for the Snap Creator GUI.

- **Storage controller serial number**

This parameter is optional. Enter the serial number of one of your storage controllers. When this information is provided, the controller serial number is embedded into the Snap Creator properties file and included in support and log outputs. This information can be used to help troubleshoot any issues that happen in the future.

- **User name**

Enter the name of the Snap Creator Server administrator.

- **Password and confirmation**

Enter the password for the Snap Creator Server administrator.

- **Enable job monitor**

If you want to enable job monitoring, select the **Enable job monitor** check box. Job Monitor is a separate section in the GUI that monitors all of the jobs that are run by Snap Creator and the status of these jobs.

## ▪ Job log size

Enter the number of jobs to keep in the history of the job log. The default is **100**; the size should be between 1 and 1000.



Although the maximum accepted value for the **Job log size** is 10,000, the recommended maximum size that you provide is 1000.

6. On the **Choose Install Location** page, enter the Snap Creator installation path or accept the default (C:\Program Files\NetApp\Snap\_Creator\_Framework), and then click **Next**.
7. On the **Choose Start Menu Folder** page, customize the folder in which Snap Creator should appear in the Windows Start Menu or accept the default, and then click **Install**.
8. After the installation is complete, click **Next**.

During the Snap Creator Server service installation, a command prompt is displayed if a service was selected as part of the installation options. This process attempts to start existing services; therefore, it is common to see failure messages listed as part of this step.

9. Click **Finish** to close the Windows installer.
10. Validate the Snap Creator Framework GUI startup by navigating to the local host on the specified port ([https://IP\\_address:gui\\_port](https://IP_address:gui_port)).

You must connect using HTTPS; otherwise, the connection is not automatically redirected to an HTTPS connection and the GUI will not work.

## Related information

[Installing Java on Snap Creator hosts](#)

[Downloading the Snap Creator software](#)

[Starting the Server from a command prompt](#)

## Starting the Server from a command prompt

You can manually start the Snap Creator Server from a command prompt by running a batch script (scServer.bat).

Typically, you must follow this procedure only if you did not select the **Start server as service** option during installation.

You can also schedule the batch script (scServer.bat) to run at startup through the Windows task scheduler. For details about using the Windows task scheduler, see the documentation for your Windows operating system.

Because the batch script (scServer.bat) runs Snap Creator in the foreground, the Snap Creator Server continues to run only as long as the command prompt is open. Closing the command prompt quits the Snap Creator Server. To run in the background, the Snap Creator Server service should be used.

1. Open a command prompt and enter the following commands:

```
cd \install_path\scServerrelease-version\bin\  
scServer.bat start
```

```
cd \Program Files\NetApp\Snap_Creator_Framework\scServer4.1.0\bin\  
scServer.bat start
```

## Installing the Snap Creator Server on UNIX-based systems

For UNIX platforms (AIX, HP-UX, Linux, and Solaris), the process of installing Snap Creator consists of extracting the Snap Creator software package (a .tar file containing both the Snap Creator Server and the Snap Creator Agent), running a setup script, starting the service, and validating the port.

JRE 1.8 Update 72 or later must be installed.

The person performing the installation must have sufficient access and privileges to perform the installation.



You must have root-level privileges to perform the initial setup.

The default port for the Snap Creator Server is 8443. You can use netstat or a similar tool to verify that the network port that you want to use supports HTTPS, is available, and is not already in use (for example, on UNIX hosts you can enter `netstat -nap | grep 8443`).

You must have already downloaded Snap Creator.

The UNIX Services (Server and Agent) feature provides a start script for Snap Creator Server and Snap Creator Agent. The start scripts are written in a UNIX shell script (Bourne shell) and are designed to run on all UNIX environments that are supported by Snap Creator.

1. Copy the downloaded Snap Creatortar.gz file to the location where you want to install Snap Creator Server:
  - a. Create a subdirectory: mkdir snap\_creator\_directoryCreate a subdirectory:

```
mkdir snap_creator_directory
```

```
mkdir /SC_41
```

- b. Copy the Snap Creatortar.gz file to the newly created directory:

```
cp NetApp_Snap_Creator_Frameworkrelease-os.tar.gz  
/snap_creator_directory
```

```
cp NetApp_Snap_Creator_Framework4.1.0-Linux32.tar.gz
/SC_41
```

2. Change to the directory where the Snap Creator Framework .tar file is located, and then extract the file:



Depending on the UNIX environment, you might be required to unzip the file before entering the tar command.

```
cd snap_creator_directory
tar -xvf NetApp_Snap_Creator_Frameworkrelease-os.tar.gz
```

- `snap_creator_directory` is the location where Snap Creator will be installed.
- `release` is the current release of the Snap Creator software package.
- `os` is the operating system.

```
cd /sc_41
tar -xvf NetApp_Snap_Creator_Framework4.1.0-Linux32.tar.gz
```

This extracts both the Server and the Agent software. Typically, only Snap Creator Server is configured. The agents typically reside on the database or application servers to be protected, as seen in the following example:

+

```
NetApp_Snap_Creator_Framework4.1.0-Linux32.tar.gz  scServer4.1.0
scAgent4.1.0
```

3. Perform the initial setup of Snap Creator:

```
cd scServer*
./snapcreator --setup
Welcome to the NetApp Snap Creator Framework release-version!
\#\#\# Installation options \#\#\#
01. NetApp Snap Creator Framework release-version Server
02. NetApp Snap Creator Framework release-version Remote CLI
Select install option (enter a number or "q" to quit):
```

Enter **01** to install Snap Creator Server.

- Option 01 performs the initial setup of Snap Creator Server by configuring a Snap Creator user and password, designating the GUI port where Snap Creator Server will run, and configuring other parameters.

- Option 02 sets up Snap Creator Server as a local binary and enables you to issue commands from your local system CLI to a remote Snap Creator Server.

4. Accept the end user license agreement by entering y here:

```
END USER LICENSE AGREEMENT
...the EULA displays...

Do you accept the End User License Agreement (y|n): <Enter y>

Enter controller serial number (Recommended): <OPTIONAL: Enter serial
number for one of your storage controllers>
```

5. Enter the controller serial number.

The controller serial number is embedded in the Snap Creator properties file and included in support and log outputs. You can use this information to help troubleshoot any issues that might happen later.

6. Enter the server port, system IP, and JAVA bin path, and then continue with the prompts.

```
Enter Snap Creator server port [8443]: <Enter server port>

Enable job monitor (Y|N): <Enter Y>

Enter job monitor size, how many jobs to allow [100]: <Enter the number
of jobs from 1-1000>
```



Although the maximum accepted value for the **job monitor size** is 10,000, the recommended maximum size that you provide is 1000.



```
Enter scServer Administrator Username: <Enter the Administrator
username>
Enter password for snap_creator_administrator: <Enter the password>
Confirm password for snap_creator_administrator: <Enter the password
again>

Enter JAVA Bin Path: /usr/java/default/bin
Enter Your System IP: 10.232.30.18
INFO: Updated NetApp Snap Creator Framework release-version
/install_path/scServerrelease-version/engine/etc/snapcreator.properties
INFO: Updated NetApp Snap Creator Framework release-version
/install_path/scServerrelease-version/bin/scServer

INFO: To start scServer please do the following:

/install_path/scServerrelease-version/bin/scServer start

INFO: To access NetApp Snap Creator Framework release-version GUI goto
https://hostname:gui_port
```

## 7. Start the Snap Creator Framework Server:

```
/install_path/scServerrelease-version/bin/scServer start
Checking Status of scServer:
Running
```

8. Validate the Snap Creator Framework GUI startup by navigating to the local host on the specified port (for example, <https://10.12.123.123:8443>).

You must connect using HTTPS; otherwise, the GUI does not work.

If communication goes through a firewall, open the network port.

### Related information

[Installing Java on Snap Creator hosts](#)

[Downloading the Snap Creator software](#)

## Copyright Information

Copyright © 2021 NetApp, Inc. All rights reserved. Printed in the U.S. No part of this document covered by copyright may be reproduced in any form or by any means-graphic, electronic, or mechanical, including photocopying, recording, taping, or storage in an electronic retrieval system- without prior written permission of the copyright owner.

Software derived from copyrighted NetApp material is subject to the following license and disclaimer:

THIS SOFTWARE IS PROVIDED BY NETAPP "AS IS" AND WITHOUT ANY EXPRESS OR IMPLIED WARRANTIES, INCLUDING, BUT NOT LIMITED TO, THE IMPLIED WARRANTIES OF MERCHANTABILITY AND FITNESS FOR A PARTICULAR PURPOSE, WHICH ARE HEREBY DISCLAIMED. IN NO EVENT SHALL NETAPP BE LIABLE FOR ANY DIRECT, INDIRECT, INCIDENTAL, SPECIAL, EXEMPLARY, OR CONSEQUENTIAL DAMAGES (INCLUDING, BUT NOT LIMITED TO, PROCUREMENT OF SUBSTITUTE GOODS OR SERVICES; LOSS OF USE, DATA, OR PROFITS; OR BUSINESS INTERRUPTION) HOWEVER CAUSED AND ON ANY THEORY OF LIABILITY, WHETHER IN CONTRACT, STRICT LIABILITY, OR TORT (INCLUDING NEGLIGENCE OR OTHERWISE) ARISING IN ANY WAY OUT OF THE USE OF THIS SOFTWARE, EVEN IF ADVISED OF THE POSSIBILITY OF SUCH DAMAGE.

NetApp reserves the right to change any products described herein at any time, and without notice. NetApp assumes no responsibility or liability arising from the use of products described herein, except as expressly agreed to in writing by NetApp. The use or purchase of this product does not convey a license under any patent rights, trademark rights, or any other intellectual property rights of NetApp.

The product described in this manual may be protected by one or more U.S. patents, foreign patents, or pending applications.

RESTRICTED RIGHTS LEGEND: Use, duplication, or disclosure by the government is subject to restrictions as set forth in subparagraph (c)(1)(ii) of the Rights in Technical Data and Computer Software clause at DFARS 252.277-7103 (October 1988) and FAR 52-227-19 (June 1987).

## Trademark Information

NETAPP, the NETAPP logo, and the marks listed at <http://www.netapp.com/TM> are trademarks of NetApp, Inc. Other company and product names may be trademarks of their respective owners.