



Managing backups

Snap Creator Framework

NetApp
June 11, 2024

This PDF was generated from https://docs.netapp.com/us-en/snap-creator-framework/administration/reference_what_you_should_back_up.html on June 11, 2024. Always check docs.netapp.com for the latest.

Table of Contents

- Managing backups 1
 - What Snap Creator information should be backed up 1
 - Creating backups 1
 - Viewing a list of backup copies of a configuration file 3
 - Deleting backups 4

Managing backups

You can create backup copies, view a list of backup copies, and delete backup copies when they are no longer required.

In addition, you can automate backup operations. For details, see related tasks for information about creating scheduled jobs.

Related information

[Creating scheduled jobs](#)

What Snap Creator information should be backed up

The best practice is to create backup copies of specific Snap Creator directories to help ensure that the Snap Creator data can be restored without loss.

You should create backup copies of the following directories:

- The Snap Creator Server 4.3 engine subdirectory:
 - Snap Creator database (..\snapcreator)
 - Snap Creator Server properties (..\etc)
 - Profiles and configuration (..\configs)
 - Logs (..\logs)
 - Plug-in repository, if enabled (..\snapcreatorPlugin)
- The Snap Creator Agent directory:
 - Snap Creator Agent properties (..\etc)
 - Logs, if enabled (..\logs)
 - Plug-ins (..\plugins)



Optimally, backups should be scheduled to occur when the Snap Creator services or processes can be stopped in order to ensure that the Snap Creator data is backed up consistently.

Creating backups

You can create backups by using the Snap Creator GUI.

One of the following conditions must be met:

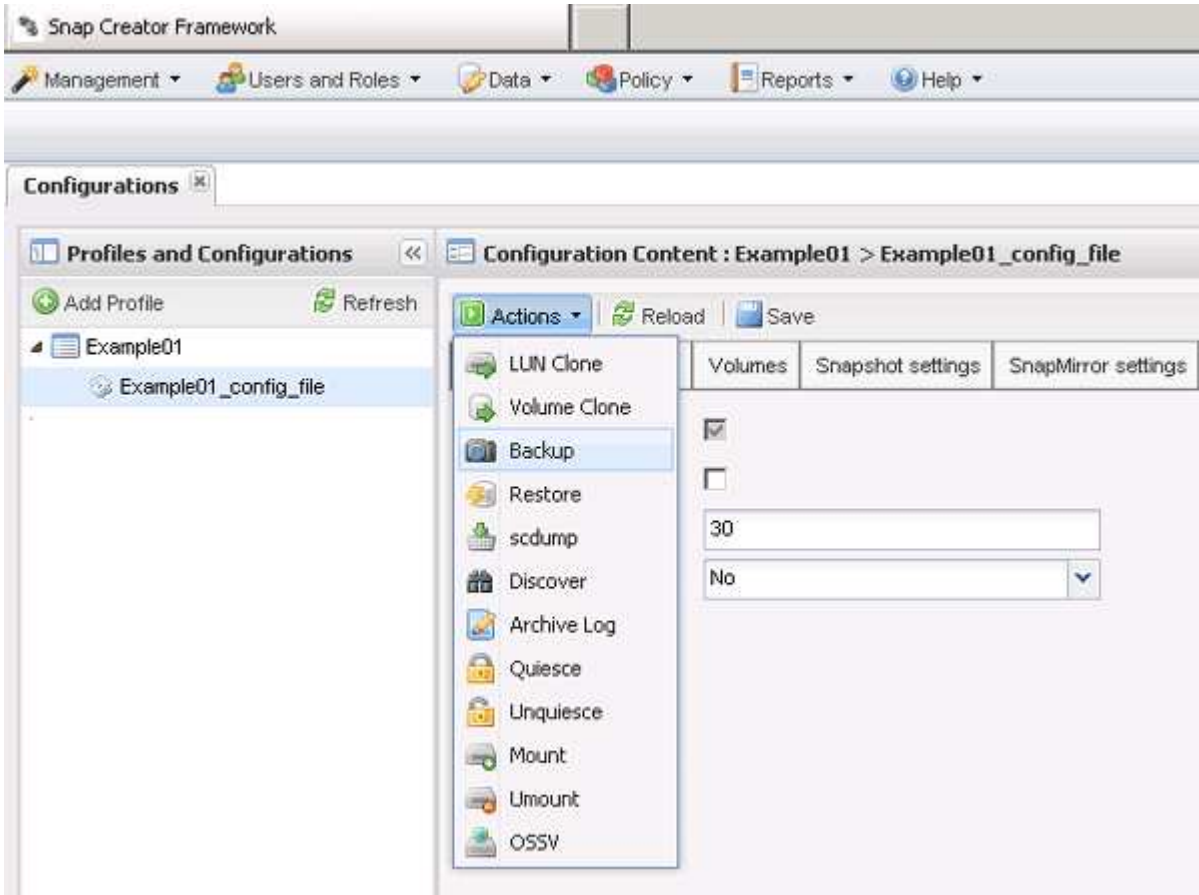
- A backup policy must be defined in the configuration file; or,
- A policy object must be configured and assigned to the profile.



If a policy object is defined, it will overrule any entries that might be in the configuration file.

1. From the Snap Creator GUI main menu, select **Management > Configurations**.

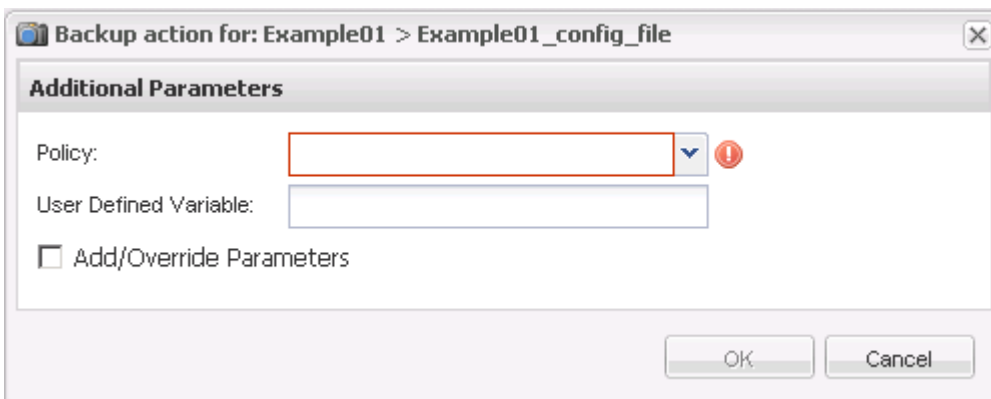
2. From the **Configurations** tab, in the **Profiles and Configuration** pane, select the configuration file.
3. Select **Actions > Backup**.



4. In the Additional Parameters dialog box, select the policy, and then click **OK** to start the backup.



If no user-created policy is assigned to the configuration, hourly, daily, weekly, and monthly are the available selections in the **Policy** drop-down list. If one or more user-created policies have been assigned to the configuration, they are displayed in the **Policy** drop-down list instead.



5. Verify that information about the backup job is displayed in the **Console** pane.

In this example, the output indicates that the Snap Creator operation finished successfully.



The **Console** pane only displays the most pertinent information; this is the verbose mode. To see detailed information about the job that just ran, select **Reports > Logs** at the top of the page. From the Logs view, the profile, configuration file, log type, and specific log can be selected.

Viewing a list of backup copies of a configuration file

You can view a list of the backup copies of ONTAP volumes that are defined in the configuration file. You can also get details about available backups and rename specific backups based on the requirement.

1. From the main menu of the Snap Creator GUI, select **Data > Backups**.
2. From the Profiles and Configurations pane of the Backups tab, expand a profile, and then select a configuration file.

The Backups tab displays a list of all of the backup copies of the ONTAP volumes that are defined in the configuration file.



Snap Creator 4.3 or an earlier release deletes a Snapshot copy based on the retention period, even if the copies are renamed. To retain Snapshot copies for an unlimited time, Snap Creator Framework has provided a button named “Unlimited Retention”, under the “data ->backup” tab on the Snap Creator Framework GUI. You can select a Snapshot copy that you want to keep for an unlimited time and click the “Unlimited Retention” button. The name of the selected Snapshot copy changes from <snapshot_name> to <snapshot_name_unlimited>.

Deleting backups

You can delete backup copies of a configuration file.

1. From the main menu of the Snap Creator graphical user interface (GUI), select **Data > Backups**
2. From the Profiles and Configurations pane of the Backups tab, expand a profile and select a configuration file.
3. Select the backup that you want to delete and click **Delete**.



If the configuration file contains multiple Data ONTAP volumes, you must select the Snapshot copy that you want to delete on each of the Data ONTAP volumes.

4. Click **Yes** in the confirmation window.

Copyright information

Copyright © 2024 NetApp, Inc. All Rights Reserved. Printed in the U.S. No part of this document covered by copyright may be reproduced in any form or by any means—graphic, electronic, or mechanical, including photocopying, recording, taping, or storage in an electronic retrieval system—without prior written permission of the copyright owner.

Software derived from copyrighted NetApp material is subject to the following license and disclaimer:

THIS SOFTWARE IS PROVIDED BY NETAPP “AS IS” AND WITHOUT ANY EXPRESS OR IMPLIED WARRANTIES, INCLUDING, BUT NOT LIMITED TO, THE IMPLIED WARRANTIES OF MERCHANTABILITY AND FITNESS FOR A PARTICULAR PURPOSE, WHICH ARE HEREBY DISCLAIMED. IN NO EVENT SHALL NETAPP BE LIABLE FOR ANY DIRECT, INDIRECT, INCIDENTAL, SPECIAL, EXEMPLARY, OR CONSEQUENTIAL DAMAGES (INCLUDING, BUT NOT LIMITED TO, PROCUREMENT OF SUBSTITUTE GOODS OR SERVICES; LOSS OF USE, DATA, OR PROFITS; OR BUSINESS INTERRUPTION) HOWEVER CAUSED AND ON ANY THEORY OF LIABILITY, WHETHER IN CONTRACT, STRICT LIABILITY, OR TORT (INCLUDING NEGLIGENCE OR OTHERWISE) ARISING IN ANY WAY OUT OF THE USE OF THIS SOFTWARE, EVEN IF ADVISED OF THE POSSIBILITY OF SUCH DAMAGE.

NetApp reserves the right to change any products described herein at any time, and without notice. NetApp assumes no responsibility or liability arising from the use of products described herein, except as expressly agreed to in writing by NetApp. The use or purchase of this product does not convey a license under any patent rights, trademark rights, or any other intellectual property rights of NetApp.

The product described in this manual may be protected by one or more U.S. patents, foreign patents, or pending applications.

LIMITED RIGHTS LEGEND: Use, duplication, or disclosure by the government is subject to restrictions as set forth in subparagraph (b)(3) of the Rights in Technical Data -Noncommercial Items at DFARS 252.227-7013 (FEB 2014) and FAR 52.227-19 (DEC 2007).

Data contained herein pertains to a commercial product and/or commercial service (as defined in FAR 2.101) and is proprietary to NetApp, Inc. All NetApp technical data and computer software provided under this Agreement is commercial in nature and developed solely at private expense. The U.S. Government has a non-exclusive, non-transferrable, nonsublicensable, worldwide, limited irrevocable license to use the Data only in connection with and in support of the U.S. Government contract under which the Data was delivered. Except as provided herein, the Data may not be used, disclosed, reproduced, modified, performed, or displayed without the prior written approval of NetApp, Inc. United States Government license rights for the Department of Defense are limited to those rights identified in DFARS clause 252.227-7015(b) (FEB 2014).

Trademark information

NETAPP, the NETAPP logo, and the marks listed at <http://www.netapp.com/TM> are trademarks of NetApp, Inc. Other company and product names may be trademarks of their respective owners.