



Performing a single-file restore in a SAN environment

Snap Creator Framework

NetApp

January 20, 2026

This PDF was generated from https://docs.netapp.com/us-en/snap-creator-framework/domino-ops/task_using_snapdrive_for_windows_to_mount_snapshot_copy.html on January 20, 2026. Always check docs.netapp.com for the latest.

Table of Contents

- Performing a single-file restore in a SAN environment 1
 - Using SnapDrive to mount a Snapshot copy 1
 - Copying the file to the Data Restore Directory 2
 - Using a Snap Creator custom action to complete restore processing 2
 - Disconnecting the Snapshot Copy 3

Performing a single-file restore in a SAN environment

For single-file restores in a SAN environment, you can use SnapDrive to mount the Snapshot copy on the Snap Creator Agent host. You can then copy the file you want to restore to the Data Restore Directory and use a Snap Creator custom action to complete restore processing.

Related information

[Using SnapDrive to mount a Snapshot copy](#)

[Copying the file to the Data Restore Directory](#)

[Using a Snap Creator custom action to complete restore processing](#)

[Disconnecting the Snapshot Copy](#)

Using SnapDrive to mount a Snapshot copy

You can use SnapDrive to mount the Snapshot copy for the file you want to restore. You can then manually copy the file to the Data Restore Directory.

The following procedure shows how to use SnapDrive for Windows to mount a Snapshot copy on a Windows Server 2008 host. SnapDrive for Windows and the Snap Creator Agent must be running on the host.

1. In Server Manager, click **Storage > SnapDrive > physical_server_name > Disks**.
2. In the Disk Identification pane, navigate to the Snapshot copy that contains the copy of the file you want to restore and choose **Connect Disk** in the right-click menu.

The Connect Disk wizard opens.

Throughout the Connect Disk wizard, click **Next** to advance to the next page. Click **Back** to return to the previous page.



Make a note of the name of the Snapshot copy. You will need the name when you copy the file to the Data Restore Directory.

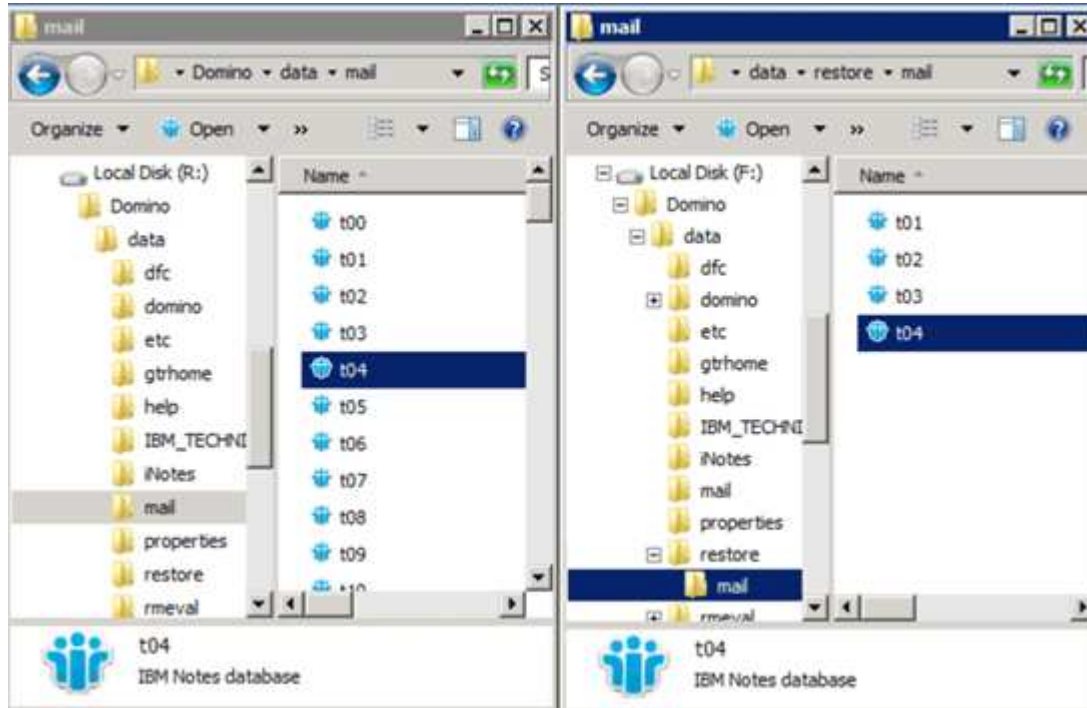
3. On the Provide a Storage System Name, Lun Path and Name page, optionally enter descriptive text for the LUN.
4. On the Select a LUN Type page, leave the default.
5. On the Select LUN Properties page, select the drive letter or mount point for the Snapshot copy.
6. On the iSCSI initiator/FC host bus adapter (HBA) page, select the iSCSI initiator or FC host bus adapter (HBA).
7. On the Management Type page, select the management type you want to use to map to the LUN: automatic or manual.
8. Click **Finish** to mount the Snapshot copy to the specified mount point.

Copying the file to the Data Restore Directory

After you have mounted the Snapshot copy for the file you want to restore, you can copy the file to the Data Restore Directory specified in the backup and restore configuration file.

1. Copy the file to be restored from the mounted Snapshot copy.
2. Paste the file in the Data Restore Directory specified in the backup and restore configuration file.

The following example shows how you might copy the database file t04.nsf from the Snapshot copy mounted on the R: drive to the Data Restore Directory specified in the configuration file.



Using a Snap Creator custom action to complete restore processing

You can use a Snap Creator custom action to complete processing of restores originated outside of Snap Creator.

You can perform this action in the Snap Creator CLI only.

1. In the Snap Creator CLI, enter the following command: `snapcreator.exe ---action custom --server server --port port --user user --passwd password --profile profile --config config --params snapname=snapshot_name datapath=datapath restoretype=u2m | su2m restoretime="MM/DD/YYYY HH:MM:SS" disablereplication=Y|N`

where

- server is the host name or IP address of the Snap Creator Server.
- port is the port number where the Snap Creator Server is running.

- user is the name of the Snap Creator user.
- password is the Snap Creator user's password.



You can omit the `--passwd` option if you do not want to type the password in clear text. Snap Creator will prompt for the password when you execute the command

- profile is the name of the Snap Creator profile.
- config is the name of the Snap Creator configuration file.
- snapshot_name is the name of the Snapshot copy from which you want to restore the file.
- datapath is the pathname of the directory to which you want to restore the file.
- restoretype is the type of restore to be performed:
 - u2m performs an up-to-the-minute restore.
 - su2m performs a selectable up-to-the-minute restore. Specify the date and time to which you want to play forward Domino transaction logs in MM/DD/YYYY HH:MM:SS format in the `--restoretime` option. For example, 01/23/2014 12:45:00.
- disablereplication disables Domino replication:
 - Enter N (default) to allow Domino replication. The plug-in uses an existing Domino replica ID for the restored database file.



An alternative method to allow Domino replication is to leave this parameter out of the command.

- Enter Y to disable Domino replication. The plug-in sets a new Domino replica ID for the restored database file. NOTE: Appending `--verbose` to the command will show additional information about the restore operation. Otherwise, you are immediately returned to the command prompt when the command finishes executing.

```
snapcreator.exe --action custom --server Tampico --port 8443
--user admin --profile Domino --config Nantes
--params snapname=Nantes-Test_Policy_20140123121459
datapath=F:\Domino\data\restore\mail\t04.nsf
restoretype=su2m restoretime="01/23/2014 12:45:00"
disablereplication=y
```

Disconnecting the Snapshot Copy

You need to disconnect the mounted Snapshot copy when the restore operation is complete.

The following procedure shows how to disconnect a mounted Snapshot copy on a Windows Server 2008 host. SnapDrive for Windows and the Snap Creator Agent must be running on the host.

1. In Server Manager, click **Storage > SnapDrive > physical_server_name > Disks**.
2. In the Disk Identification pane, select the mounted disk and click **Disconnect Disk** in the right-click menu.

3. In the Disconnect Disk dialog, click **Yes**.

Copyright information

Copyright © 2026 NetApp, Inc. All Rights Reserved. Printed in the U.S. No part of this document covered by copyright may be reproduced in any form or by any means—graphic, electronic, or mechanical, including photocopying, recording, taping, or storage in an electronic retrieval system—without prior written permission of the copyright owner.

Software derived from copyrighted NetApp material is subject to the following license and disclaimer:

THIS SOFTWARE IS PROVIDED BY NETAPP “AS IS” AND WITHOUT ANY EXPRESS OR IMPLIED WARRANTIES, INCLUDING, BUT NOT LIMITED TO, THE IMPLIED WARRANTIES OF MERCHANTABILITY AND FITNESS FOR A PARTICULAR PURPOSE, WHICH ARE HEREBY DISCLAIMED. IN NO EVENT SHALL NETAPP BE LIABLE FOR ANY DIRECT, INDIRECT, INCIDENTAL, SPECIAL, EXEMPLARY, OR CONSEQUENTIAL DAMAGES (INCLUDING, BUT NOT LIMITED TO, PROCUREMENT OF SUBSTITUTE GOODS OR SERVICES; LOSS OF USE, DATA, OR PROFITS; OR BUSINESS INTERRUPTION) HOWEVER CAUSED AND ON ANY THEORY OF LIABILITY, WHETHER IN CONTRACT, STRICT LIABILITY, OR TORT (INCLUDING NEGLIGENCE OR OTHERWISE) ARISING IN ANY WAY OUT OF THE USE OF THIS SOFTWARE, EVEN IF ADVISED OF THE POSSIBILITY OF SUCH DAMAGE.

NetApp reserves the right to change any products described herein at any time, and without notice. NetApp assumes no responsibility or liability arising from the use of products described herein, except as expressly agreed to in writing by NetApp. The use or purchase of this product does not convey a license under any patent rights, trademark rights, or any other intellectual property rights of NetApp.

The product described in this manual may be protected by one or more U.S. patents, foreign patents, or pending applications.

LIMITED RIGHTS LEGEND: Use, duplication, or disclosure by the government is subject to restrictions as set forth in subparagraph (b)(3) of the Rights in Technical Data -Noncommercial Items at DFARS 252.227-7013 (FEB 2014) and FAR 52.227-19 (DEC 2007).

Data contained herein pertains to a commercial product and/or commercial service (as defined in FAR 2.101) and is proprietary to NetApp, Inc. All NetApp technical data and computer software provided under this Agreement is commercial in nature and developed solely at private expense. The U.S. Government has a non-exclusive, non-transferrable, nonsublicensable, worldwide, limited irrevocable license to use the Data only in connection with and in support of the U.S. Government contract under which the Data was delivered. Except as provided herein, the Data may not be used, disclosed, reproduced, modified, performed, or displayed without the prior written approval of NetApp, Inc. United States Government license rights for the Department of Defense are limited to those rights identified in DFARS clause 252.227-7015(b) (FEB 2014).

Trademark information

NETAPP, the NETAPP logo, and the marks listed at <http://www.netapp.com/TM> are trademarks of NetApp, Inc. Other company and product names may be trademarks of their respective owners.