



SAP HANA File-Based Backup and Database Integrity Checks

Snap Creator Framework

NetApp
August 30, 2024

This PDF was generated from https://docs.netapp.com/us-en/snap-creator-framework/sap-hana-ops/task_modifying_configuration_for_file_based_backup.html on August 30, 2024. Always check docs.netapp.com for the latest.

Table of Contents

- SAP HANA File-Based Backup and Database Integrity Checks 1
 - Modifying configuration for File-Based Backup 1
 - Modifying configuration for Database Integrity Checks 1
 - Scheduling file-based backup 2
 - Scheduling database integrity checks 3
 - Performing File-Based Backup from the Snap Creator GUI 3
 - Performing File-Based Backup from Snap Creator command line 4
 - Performing Database Integrity Checks from Snap Creator GUI 4
 - Performing Database Integrity Checks from Snap Creator command line 5

SAP HANA File-Based Backup and Database Integrity Checks

SAP recommends combining storage-based Snapshot backups with a weekly file-based backup to execute a block integrity check. The block integrity check can be executed from within the Snap Creator graphical user interface (GUI) or command line interface (CLI).

The File-Based Data Backup operation is used when the backup copies of files are to be retained. The Database Integrity Checks operation is used when backup copies have to be discarded.

You can configure either one or both of the operations. During on demand backup, you can choose either one of the operations.

Modifying configuration for File-Based Backup

You can modify the parameters that are configured for File-Based Backup. The subsequent scheduled or on-demand File-Based Backup operation reflects the updated information.

1. Click on the SAP HANA profile.
2. Select the configuration that you want to modify, and click **HANA File Based Backup Settings**.



3. Edit the information, and click **Save**.

Modifying configuration for Database Integrity Checks

You can modify the parameters that are configured for Database Integrity Checks. The subsequent scheduled or on-demand Integrity Check operation reflects the updated information.

1. Click on the SAP HANA profile.
2. Select the configuration that you want to modify, and click **HANA Integrity Check Settings**.



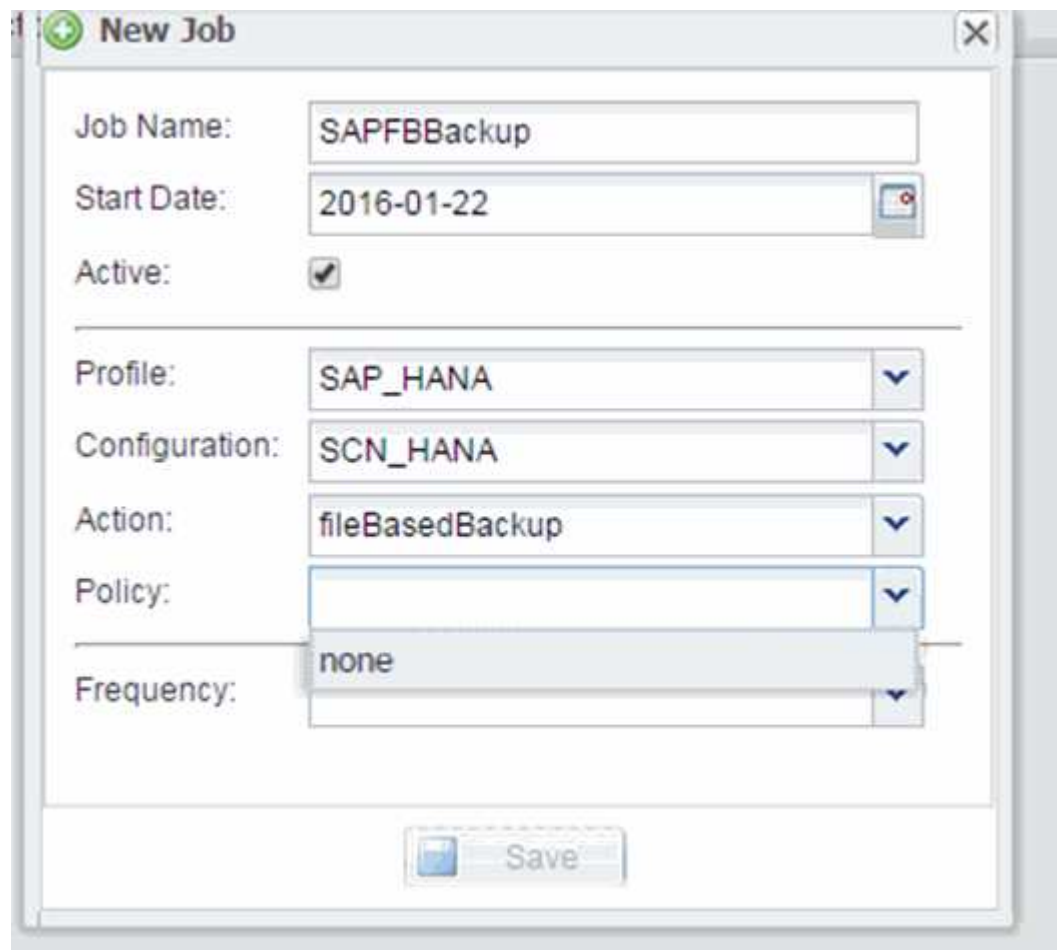
3. Edit the information, and click **Save**.

Scheduling file-based backup

For SAP HANA configurations, you can schedule additional operations such as file-based backup and database integrity checks. You can schedule the file-based backup operation to occur at specific intervals.

1. From the main menu of the Snap Creator GUI, select **Management > Schedules**, and click **Create**.
2. In the New Job window, enter the details for the job.

The file-based backup policy is set to “none” by default.



Scheduling database integrity checks

For SAP HANA configurations, you can schedule additional operations such as file-based backup and database integrity checks. You can schedule the database integrity checks operation to occur at specific intervals.

1. From the main menu of the Snap Creator GUI, select **Management > Schedules**, and click **Create**.
2. In the New Job window, enter the details for the job.

The integrity check policy is set to “none” by default.

The screenshot shows the 'New Job' dialog box with the following fields and values:

- Job Name: SAPFBBBackup
- Start Date: 2016-01-22
- Active: ☒
- Profile: SAP_HANA
- Configuration: SCN_HANA
- Action: integrityCheck
- Policy: none
- Frequency: (empty)

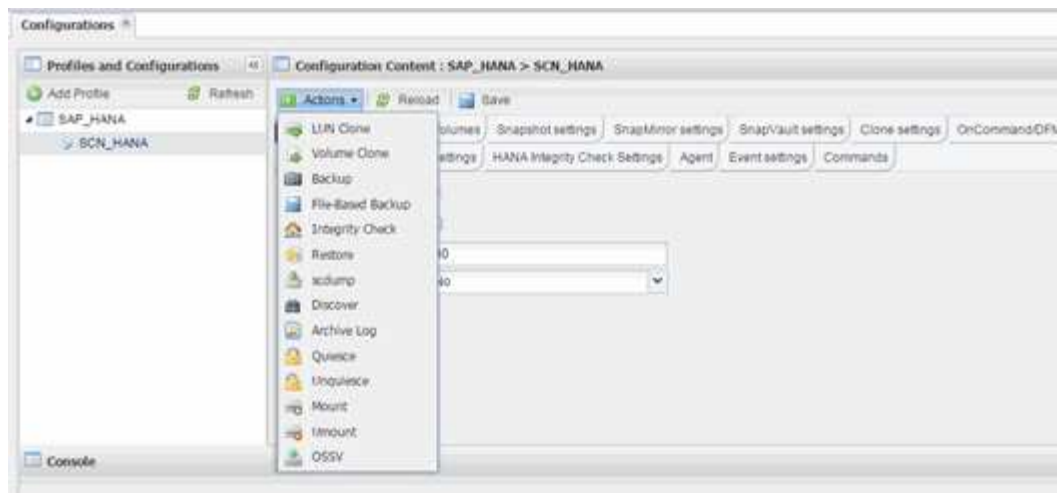
A 'Save' button is located at the bottom of the dialog.

Performing File-Based Backup from the Snap Creator GUI

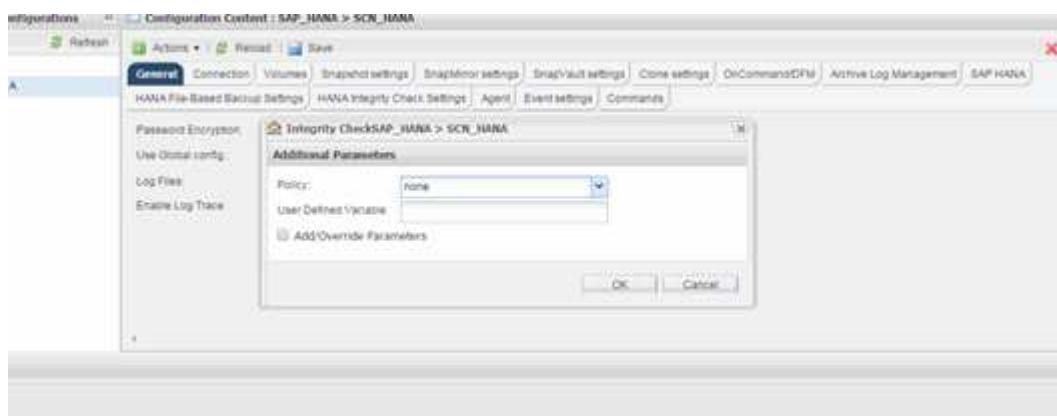
You can perform File-Based Backup from the Snap Creator graphical user interface (GUI).

You must have enabled the File-Based Backup parameter in the HANA File-Based Backup Settings tab.

1. Select the HANA_database_backup configuration.
2. Select **Actions > File-Based Backup**.



3. Set the Policy option to **None**, and click **OK**.



Performing File-Based Backup from Snap Creator command line

You can perform File-Based Backup using the Snap Creator command line.

1. To perform File-Based Backup, run the following command:

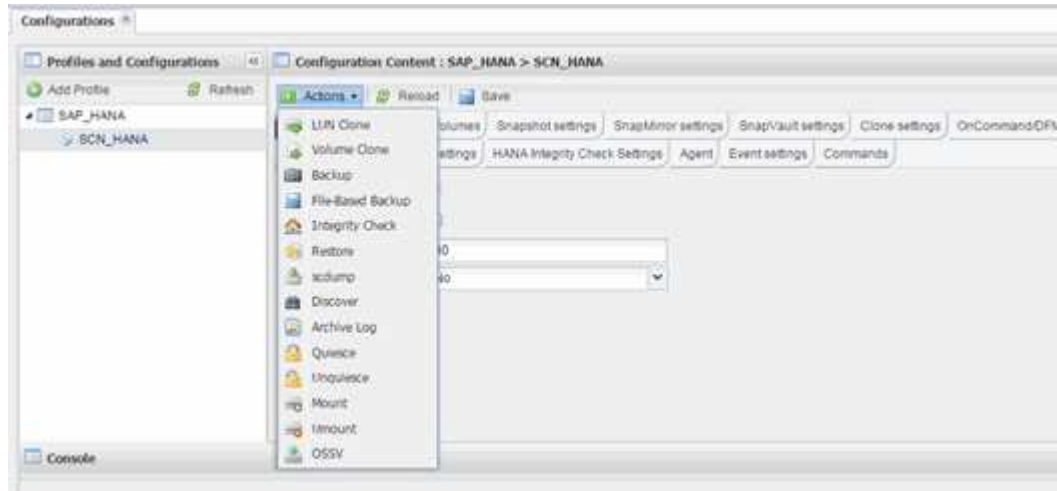
```
./snapcreator --server localhost --port 8443 --user sc --passwd sc
--profile hana_testing --config HANA_Test --action fileBasedBackup
--policy none --verbose
```

Performing Database Integrity Checks from Snap Creator GUI

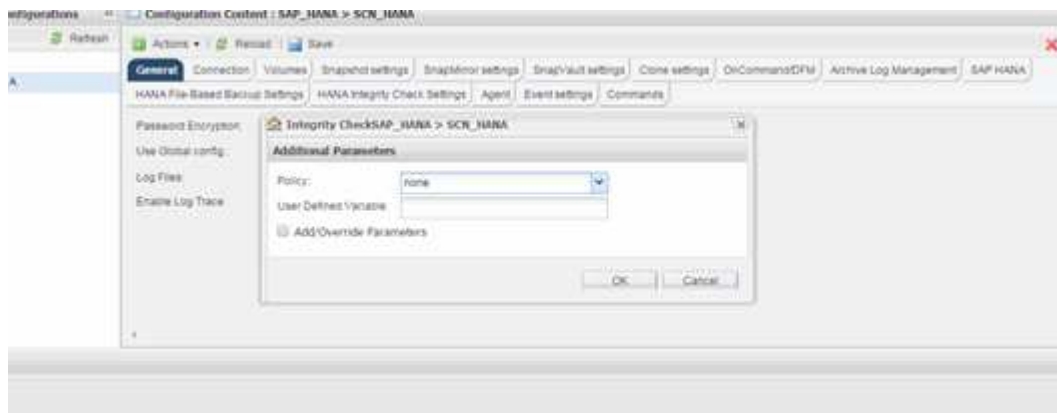
You can perform Database Integrity Checks from the Snap Creator graphical user interface (GUI).

You must have enabled the DB Integrity Check parameter in the HANA Integrity Check Settings tab.

1. Select the HANA_database_integrity_check configuration.
2. Select **Actions > Integrity Check**.



3. Set the Policy option to **None**, and click **OK**.



Performing Database Integrity Checks from Snap Creator command line

You can perform Database Integrity Checks using the Snap Creator command line.

1. To perform Database Integrity Checks, run the following command:

```
./snapcreator --server localhost --port 8443 --user sc --passwd sc  
--profile hana_testing --config HANA_Test --action integrityCheck  
--policy none --verbose
```

Copyright information

Copyright © 2024 NetApp, Inc. All Rights Reserved. Printed in the U.S. No part of this document covered by copyright may be reproduced in any form or by any means—graphic, electronic, or mechanical, including photocopying, recording, taping, or storage in an electronic retrieval system—without prior written permission of the copyright owner.

Software derived from copyrighted NetApp material is subject to the following license and disclaimer:

THIS SOFTWARE IS PROVIDED BY NETAPP “AS IS” AND WITHOUT ANY EXPRESS OR IMPLIED WARRANTIES, INCLUDING, BUT NOT LIMITED TO, THE IMPLIED WARRANTIES OF MERCHANTABILITY AND FITNESS FOR A PARTICULAR PURPOSE, WHICH ARE HEREBY DISCLAIMED. IN NO EVENT SHALL NETAPP BE LIABLE FOR ANY DIRECT, INDIRECT, INCIDENTAL, SPECIAL, EXEMPLARY, OR CONSEQUENTIAL DAMAGES (INCLUDING, BUT NOT LIMITED TO, PROCUREMENT OF SUBSTITUTE GOODS OR SERVICES; LOSS OF USE, DATA, OR PROFITS; OR BUSINESS INTERRUPTION) HOWEVER CAUSED AND ON ANY THEORY OF LIABILITY, WHETHER IN CONTRACT, STRICT LIABILITY, OR TORT (INCLUDING NEGLIGENCE OR OTHERWISE) ARISING IN ANY WAY OUT OF THE USE OF THIS SOFTWARE, EVEN IF ADVISED OF THE POSSIBILITY OF SUCH DAMAGE.

NetApp reserves the right to change any products described herein at any time, and without notice. NetApp assumes no responsibility or liability arising from the use of products described herein, except as expressly agreed to in writing by NetApp. The use or purchase of this product does not convey a license under any patent rights, trademark rights, or any other intellectual property rights of NetApp.

The product described in this manual may be protected by one or more U.S. patents, foreign patents, or pending applications.

LIMITED RIGHTS LEGEND: Use, duplication, or disclosure by the government is subject to restrictions as set forth in subparagraph (b)(3) of the Rights in Technical Data -Noncommercial Items at DFARS 252.227-7013 (FEB 2014) and FAR 52.227-19 (DEC 2007).

Data contained herein pertains to a commercial product and/or commercial service (as defined in FAR 2.101) and is proprietary to NetApp, Inc. All NetApp technical data and computer software provided under this Agreement is commercial in nature and developed solely at private expense. The U.S. Government has a non-exclusive, non-transferrable, nonsublicensable, worldwide, limited irrevocable license to use the Data only in connection with and in support of the U.S. Government contract under which the Data was delivered. Except as provided herein, the Data may not be used, disclosed, reproduced, modified, performed, or displayed without the prior written approval of NetApp, Inc. United States Government license rights for the Department of Defense are limited to those rights identified in DFARS clause 252.227-7015(b) (FEB 2014).

Trademark information

NETAPP, the NETAPP logo, and the marks listed at <http://www.netapp.com/TM> are trademarks of NetApp, Inc. Other company and product names may be trademarks of their respective owners.