



# Backup workflow

## SnapCenter Software

Soumik Das  
August 28, 2021

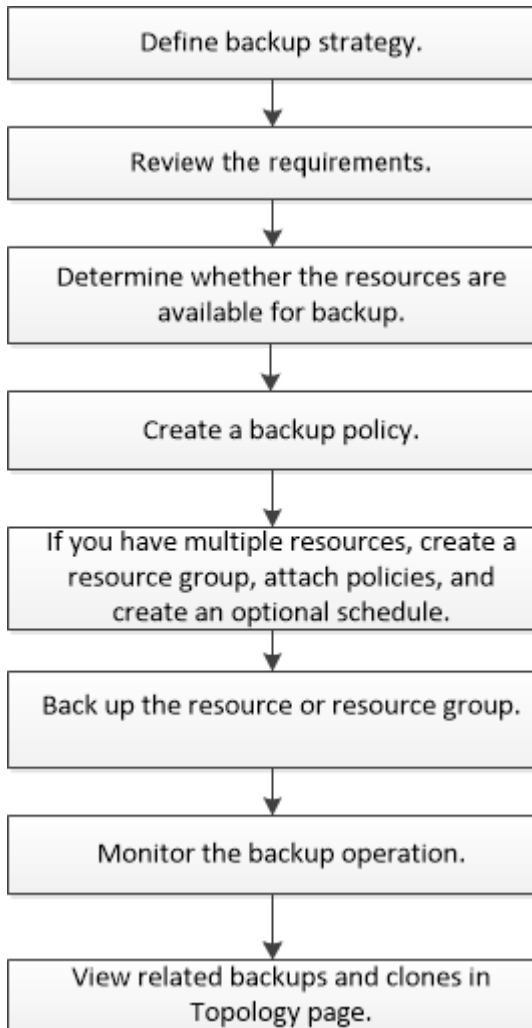
# Table of Contents

Backup workflow ..... 1

# Backup workflow

You can either create a backup of a resource (database) or resource group. The backup workflow includes planning, identifying the resources for backup, creating backup policies, creating resource groups and attaching policies, creating backups, and monitoring the operations.

The following workflow shows the sequence in which you must perform the backup operation:



While creating a backup for Oracle databases, an operational lock file (.sm\_lock\_dbsid) is created on the Oracle database host in the `$ORACLE_HOME/dbs` directory to avoid multiple operations being executed on the database. After the database has been backed up, the operational lock file is automatically removed.

However, if the previous backup was completed with a warning, the operational lock file might not get deleted, and the next backup operation gets into the wait queue. It might eventually get canceled if the `.sm_lock_dbsid` file is not deleted. In such scenario, you must manually delete the operational lock file by performing the following steps:

1. From the command prompt, navigate to `$ORACLE_HOME/dbs`.
2. Delete the operational lock: `rm -rf .sm_lock_dbsid`.

## Copyright Information

Copyright © 2021 NetApp, Inc. All rights reserved. Printed in the U.S. No part of this document covered by copyright may be reproduced in any form or by any means-graphic, electronic, or mechanical, including photocopying, recording, taping, or storage in an electronic retrieval system- without prior written permission of the copyright owner.

Software derived from copyrighted NetApp material is subject to the following license and disclaimer:

THIS SOFTWARE IS PROVIDED BY NETAPP "AS IS" AND WITHOUT ANY EXPRESS OR IMPLIED WARRANTIES, INCLUDING, BUT NOT LIMITED TO, THE IMPLIED WARRANTIES OF MERCHANTABILITY AND FITNESS FOR A PARTICULAR PURPOSE, WHICH ARE HEREBY DISCLAIMED. IN NO EVENT SHALL NETAPP BE LIABLE FOR ANY DIRECT, INDIRECT, INCIDENTAL, SPECIAL, EXEMPLARY, OR CONSEQUENTIAL DAMAGES (INCLUDING, BUT NOT LIMITED TO, PROCUREMENT OF SUBSTITUTE GOODS OR SERVICES; LOSS OF USE, DATA, OR PROFITS; OR BUSINESS INTERRUPTION) HOWEVER CAUSED AND ON ANY THEORY OF LIABILITY, WHETHER IN CONTRACT, STRICT LIABILITY, OR TORT (INCLUDING NEGLIGENCE OR OTHERWISE) ARISING IN ANY WAY OUT OF THE USE OF THIS SOFTWARE, EVEN IF ADVISED OF THE POSSIBILITY OF SUCH DAMAGE.

NetApp reserves the right to change any products described herein at any time, and without notice. NetApp assumes no responsibility or liability arising from the use of products described herein, except as expressly agreed to in writing by NetApp. The use or purchase of this product does not convey a license under any patent rights, trademark rights, or any other intellectual property rights of NetApp.

The product described in this manual may be protected by one or more U.S. patents, foreign patents, or pending applications.

RESTRICTED RIGHTS LEGEND: Use, duplication, or disclosure by the government is subject to restrictions as set forth in subparagraph (c)(1)(ii) of the Rights in Technical Data and Computer Software clause at DFARS 252.277-7103 (October 1988) and FAR 52-227-19 (June 1987).

## Trademark Information

NETAPP, the NETAPP logo, and the marks listed at <http://www.netapp.com/TM> are trademarks of NetApp, Inc. Other company and product names may be trademarks of their respective owners.