



Recovering from Admin Node failures

StorageGRID 11.5

NetApp
October 22, 2024

This PDF was generated from <https://docs.netapp.com/us-en/storagegrid-115/maintain/copying-audit-logs-from-failed-primary-admin-node.html> on October 22, 2024. Always check docs.netapp.com for the latest.

Table of Contents

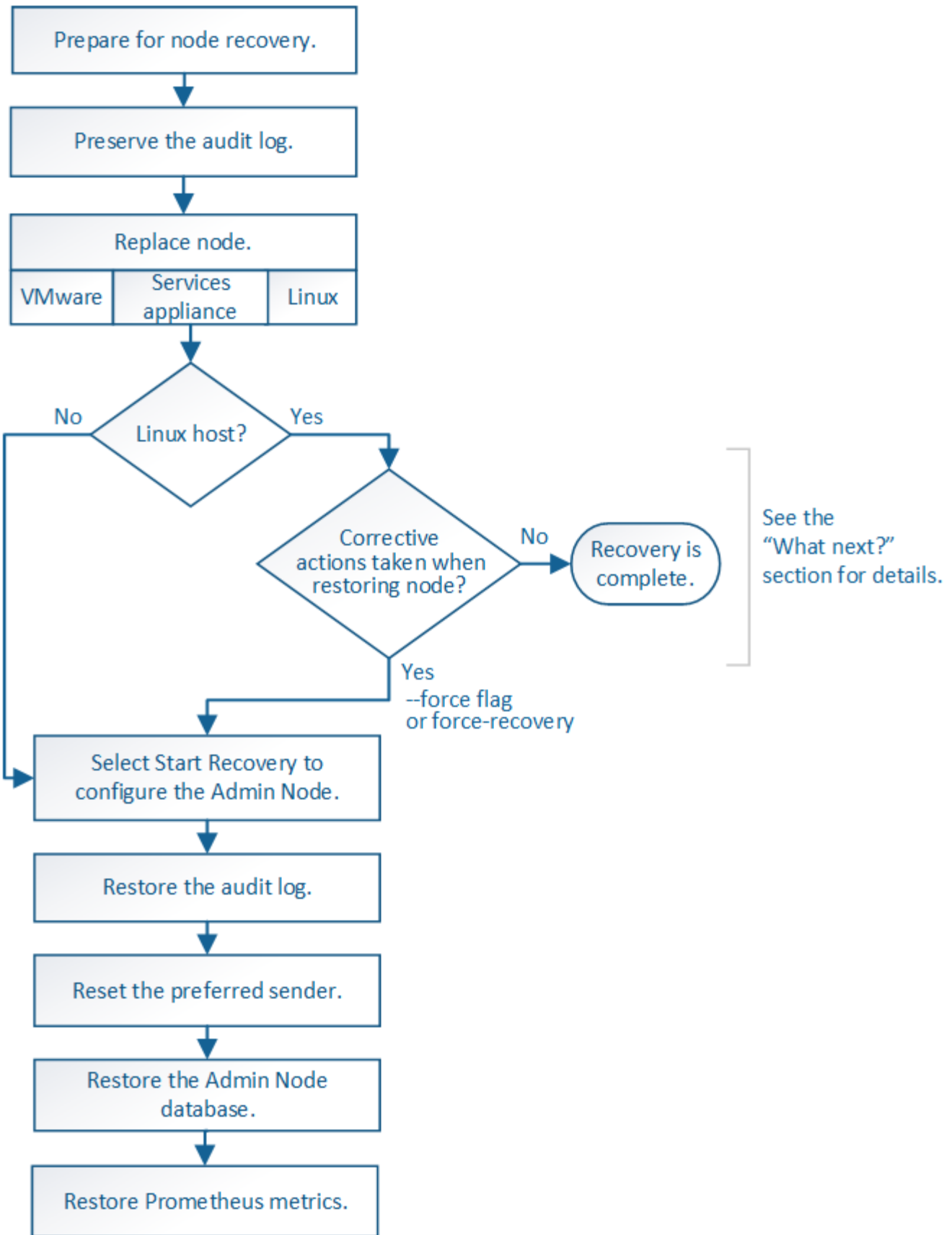
- Recovering from Admin Node failures 1
 - Recovering from primary Admin Node failures 3
 - Recovering from non-primary Admin Node failures 11

Recovering from Admin Node failures

The recovery process for an Admin Node depends on whether it is the primary Admin Node or a non-primary Admin Node.

About this task

The high-level steps for recovering a primary or non-primary Admin Node are the same, although the details of the steps differ.



Always follow the correct recovery procedure for the Admin Node you are recovering. The procedures look the same at a high level, but differ in the details.

Related information

Choices

- [Recovering from primary Admin Node failures](#)
- [Recovering from non-primary Admin Node failures](#)

Recovering from primary Admin Node failures

You must complete a specific set of tasks to recover from a primary Admin Node failure. The primary Admin Node hosts the Configuration Management Node (CMN) service for the grid.

About this task

A failed primary Admin Node should be replaced promptly. The Configuration Management Node (CMN) service on the primary Admin Node is responsible for issuing blocks of object identifiers for the grid. These identifiers are assigned to objects as they are ingested. New objects cannot be ingested unless there are identifiers available. Object ingest can continue while the CMN is unavailable because approximately one month's supply of identifiers is cached in the grid. However, after cached identifiers are exhausted, no new objects can be added.



You must repair or replace a failed primary Admin Node within approximately a month or the grid might lose its ability to ingest new objects. The exact time period depends on your rate of object ingest: if you need a more accurate assessment of the time frame for your grid, contact technical support.

Steps

- [Copying audit logs from the failed primary Admin Node](#)
- [Replacing the primary Admin Node](#)
- [Configuring the replacement primary Admin Node](#)
- [Restoring the audit log on the recovered primary Admin Node](#)
- [Resetting the preferred sender on the recovered primary Admin Node](#)
- [Restoring the Admin Node database when recovering a primary Admin Node](#)
- [Restoring Prometheus metrics when recovering a primary Admin Node](#)

Copying audit logs from the failed primary Admin Node

If you are able to copy audit logs from the failed primary Admin Node, you should preserve them to maintain the grid's record of system activity and usage. You can restore the preserved audit logs to the recovered primary Admin Node after it is up and running.

This procedure copies the audit log files from the failed Admin Node to a temporary location on a separate grid node. These preserved audit logs can then be copied to the replacement Admin Node. Audit logs are not automatically copied to the new Admin Node.

Depending on the type of failure, you might not be able to copy audit logs from a failed Admin Node. If the deployment has only one Admin Node, the recovered Admin Node starts recording events to the audit log in a new empty file and previously recorded data is lost. If the deployment includes more than one Admin Node, you can recover the audit logs from another Admin Node.



If the audit logs are not accessible on the failed Admin Node now, you might be able to access them later, for example, after host recovery.

1. Log in to the failed Admin Node if possible. Otherwise, log in to the primary Admin Node or another Admin Node, if available.
 - a. Enter the following command: `ssh admin@grid_node_IP`
 - b. Enter the password listed in the `Passwords.txt` file.
 - c. Enter the following command to switch to root: `su -`
 - d. Enter the password listed in the `Passwords.txt` file.

When you are logged in as root, the prompt changes from `$` to `#`.

2. Stop the AMS service to prevent it from creating a new log file: `service ams stop`
3. Rename the `audit.log` file so that it does not overwrite the existing file when you copy it to the recovered Admin Node.

Rename `audit.log` to a unique numbered file name such as `yyyy-mm-dd.txt.1`. For example, you can rename the `audit.log` file to `2015-10-25.txt.1`

```
cd /var/local/audit/export1s -l`mv audit.log 2015-10-25.txt.1
```

4. Restart the AMS service: `service ams start`
5. Create the directory to copy all audit log files to a temporary location on a separate grid node: `ssh admin@grid_node_IP mkdir -p /var/local/tmp/saved-audit-logs`

When prompted, enter the password for admin.

6. Copy all audit log files: `scp -p * admin@grid_node_IP:/var/local/tmp/saved-audit-logs`

When prompted, enter the password for admin.

7. Log out as root: `exit`

Replacing the primary Admin Node

To recover a primary Admin Node, you must first replace the physical or virtual hardware.

You can replace a failed primary Admin Node with a primary Admin Node running on the same platform, or you can replace a primary Admin Node running on VMware or a Linux host with a primary Admin Node hosted on a services appliance.

Use the procedure that matches the replacement platform you select for the node. After you complete the node replacement procedure (which is suitable for all node types), that procedure will direct you to the next step for primary Admin Node recovery.

Replacement platform	Procedure
VMware	Replacing a VMware node

Replacement platform	Procedure
Linux	Replacing a Linux node
SG100 and SG1000 services appliances	Replacing a services appliance
OpenStack	NetApp-provided virtual machine disk files and scripts for OpenStack are no longer supported for recovery operations. If you need to recover a node running in an OpenStack deployment, download the files for your Linux operating system. Then, follow the procedure for replacing a Linux node.

Configuring the replacement primary Admin Node

The replacement node must be configured as the primary Admin Node for your StorageGRID system.

What you'll need

- For primary Admin Nodes hosted on virtual machines, the virtual machine must be deployed, powered on, and initialized.
- For primary Admin Nodes hosted on a services appliance, you have replaced the appliance and have installed software. See the installation guide for your appliance.

[SG100 & SG1000 services appliances](#)

- You must have the latest backup of the Recovery Package file (`sgws-recovery-package-id-revision.zip`).
- You must have the provisioning passphrase.

Steps

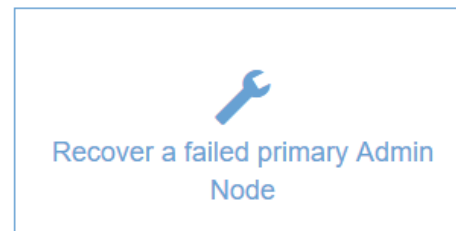
1. Open your web browser and navigate to `https://primary_admin_node_ip`.

Install

Welcome

Use this page to install a new StorageGRID system, or recover a failed primary Admin Node for an existing system.

Note: You must have access to a StorageGRID license, network configuration and grid topology information, and NTP settings to complete the installation. You must have the latest version of the Recovery Package file to complete a primary Admin Node recovery.



2. Click **Recover a failed primary Admin Node**.
3. Upload the most recent backup of the Recovery Package:
 - a. Click **Browse**.
 - b. Locate the most recent Recovery Package file for your StorageGRID system, and click **Open**.
4. Enter the provisioning passphrase.
5. Click **Start Recovery**.

The recovery process begins. The Grid Manager might become unavailable for a few minutes as the required services start. When the recovery is complete, the sign in page is displayed.

6. If single sign-on (SSO) is enabled for your StorageGRID system and the relying party trust for the Admin Node you recovered was configured to use the default Management Interface Server Certificate, update (or delete and recreate) the node's relying party trust in Active Directory Federation Services (AD FS). Use the new default server certificate that was generated during the Admin Node recovery process.



To configure a relying party trust, see the instructions for administering StorageGRID. To access the default server certificate, log in to the command shell of the Admin Node. Go to the `/var/local/mgmt-api` directory, and select the `server.crt` file.

7. Determine if you need to apply a hotfix.
 - a. Sign in to the Grid Manager using a supported browser.
 - b. Select **Nodes**.
 - c. From the list on the left, select the primary Admin Node.
 - d. On the Overview tab, note the version displayed in the **Software Version** field.
 - e. Select any other grid node.

- f. On the Overview tab, note the version displayed in the **Software Version** field.
 - If the versions displayed in the **Software Version** fields are the same, you do not need to apply a hotfix.
 - If the versions displayed in the **Software Version** fields are different, you must apply a hotfix to update the recovered primary Admin Node to the same version.

Related information

[Administer StorageGRID](#)

[StorageGRID hotfix procedure](#)

Restoring the audit log on the recovered primary Admin Node

If you were able to preserve the audit log from the failed primary Admin Node, you can copy it to the primary Admin Node you are recovering.

- The recovered Admin Node must be installed and running.
- You must have copied the audit logs to another location after the original Admin Node failed.

If an Admin Node fails, audit logs saved to that Admin Node are potentially lost. It might be possible to preserve data from loss by copying audit logs from the failed Admin Node and then restoring these audit logs to the recovered Admin Node. Depending on the failure, it might not be possible to copy audit logs from the failed Admin Node. In that case, if the deployment has more than one Admin Node, you can recover audit logs from another Admin Node as audit logs are replicated to all Admin Nodes.

If there is only one Admin Node and the audit log cannot be copied from the failed node, the recovered Admin Node starts recording events to the audit log as if the installation is new.

You must recover an Admin Node as soon as possible to restore logging functionality.

1. Log in to the recovered Admin Node:

- a. Enter the following command: `ssh admin@recovery_Admin_Node_IP`
- b. Enter the password listed in the `Passwords.txt` file.
- c. Enter the following command to switch to root: `su -`
- d. Enter the password listed in the `Passwords.txt` file.

After you are logged in as root, the prompt changes from `$` to `#`.

2. Check which audit files have been preserved: `cd /var/local/audit/export`
3. Copy the preserved audit log files to the recovered Admin Node: `scp admin@grid_node_IP:/var/local/tmp/saved-audit-logs/YYYY* .`

When prompted, enter the password for admin.

4. For security, delete the audit logs from the failed grid node after verifying that they have been copied successfully to the recovered Admin Node.
5. Update the user and group settings of the audit log files on the recovered Admin Node: `chown ams-user:bycast *`

6. Log out as root: `exit`

You must also restore any pre-existing client access to the audit share. For more information, see the instructions for administering StorageGRID.

Related information

[Administer StorageGRID](#)

Resetting the preferred sender on the recovered primary Admin Node

If the primary Admin Node you are recovering is currently set as the preferred sender of alert notifications, alarm notifications, and AutoSupport messages, you must reconfigure this setting.

What you'll need

- You must be signed in to the Grid Manager using a supported browser.
- You must have specific access permissions.
- The recovered Admin Node must be installed and running.

Steps

1. Select **Configuration > System Settings > Display Options**.
2. Select the recovered Admin Node from the **Preferred Sender** drop-down list.
3. Click **Apply Changes**.

Related information

[Administer StorageGRID](#)

Restoring the Admin Node database when recovering a primary Admin Node

If you want to retain the historical information about attributes, alarms, and alerts on a primary Admin Node that has failed, you can restore the Admin Node database. You can only restore this database if your StorageGRID system includes another Admin Node.

- The recovered Admin Node must be installed and running.
- The StorageGRID system must include at least two Admin Nodes.
- You must have the `Passwords.txt` file.
- You must have the provisioning passphrase.

If an Admin Node fails, the historical information stored in its Admin Node database is lost. This database includes the following information:

- Alert history
- Alarm history
- Historical attribute data, which is used in the charts and text reports available from the **Support > Tools > Grid Topology** page.

When you recover an Admin Node, the software installation process creates an empty Admin Node database on the recovered node. However, the new database only includes information for servers and services that are

currently part of the system or added later.

If you restored a primary Admin Node and your StorageGRID system has another Admin Node, you can restore the historical information by copying the Admin Node database from a non-primary Admin Node (the *source Admin Node*) to the recovered primary Admin Node. If your system has only a primary Admin Node, you cannot restore the Admin Node database.



Copying the Admin Node database might take several hours. Some Grid Manager features will be unavailable while services are stopped on the source Admin Node.

1. Log in to the source Admin Node:

- a. Enter the following command: `ssh admin@grid_node_IP`
- b. Enter the password listed in the `Passwords.txt` file.
- c. Enter the following command to switch to root: `su -`
- d. Enter the password listed in the `Passwords.txt` file.

2. From the source Admin Node, stop the MI service: `service mi stop`

3. From the source Admin Node, stop the Management Application Program Interface (mgmt-api) service:
`service mgmt-api stop`

4. Complete the following steps on the recovered Admin Node:

a. Log in to the recovered Admin Node:

- i. Enter the following command: `ssh admin@grid_node_IP`
- ii. Enter the password listed in the `Passwords.txt` file.
- iii. Enter the following command to switch to root: `su -`
- iv. Enter the password listed in the `Passwords.txt` file.

b. Stop the MI service: `service mi stop`

c. Stop the mgmt-api service: `service mgmt-api stop`

d. Add the SSH private key to the SSH agent. Enter: `ssh-add`

e. Enter the SSH Access Password listed in the `Passwords.txt` file.

f. Copy the database from the source Admin Node to the recovered Admin Node:

`/usr/local/mi/bin/mi-clone-db.sh Source_Admin_Node_IP`

g. When prompted, confirm that you want to overwrite the MI database on the recovered Admin Node.

The database and its historical data are copied to the recovered Admin Node. When the copy operation is done, the script starts the recovered Admin Node.

h. When you no longer require passwordless access to other servers, remove the private key from the SSH agent. Enter: `ssh-add -D`

5. Restart the services on the source Admin Node: `service servermanager start`

Restoring Prometheus metrics when recovering a primary Admin Node

Optionally, you can retain the historical metrics maintained by Prometheus on a primary

Admin Node that has failed. The Prometheus metrics can only be restored if your StorageGRID system includes another Admin Node.

- The recovered Admin Node must be installed and running.
- The StorageGRID system must include at least two Admin Nodes.
- You must have the `Passwords.txt` file.
- You must have the provisioning passphrase.

If an Admin Node fails, the metrics maintained in the Prometheus database on the Admin Node are lost. When you recover the Admin Node, the software installation process creates a new Prometheus database. After the recovered Admin Node is started, it records metrics as if you had performed a new installation of the StorageGRID system.

If you restored a primary Admin Node and your StorageGRID system has another Admin Node, you can restore the historical metrics by copying the Prometheus database from a non-primary Admin Node (the *source Admin Node*) to the recovered primary Admin Node. If your system has only a primary Admin Node, you cannot restore the Prometheus database.



Copying the Prometheus database might take an hour or more. Some Grid Manager features will be unavailable while services are stopped on the source Admin Node.

1. Log in to the source Admin Node:
 - a. Enter the following command: `ssh admin@grid_node_IP`
 - b. Enter the password listed in the `Passwords.txt` file.
 - c. Enter the following command to switch to root: `su -`
 - d. Enter the password listed in the `Passwords.txt` file.
2. From the source Admin Node, stop the Prometheus service: `service prometheus stop`
3. Complete the following steps on the recovered Admin Node:
 - a. Log in to the recovered Admin Node:
 - i. Enter the following command: `ssh admin@grid_node_IP`
 - ii. Enter the password listed in the `Passwords.txt` file.
 - iii. Enter the following command to switch to root: `su -`
 - iv. Enter the password listed in the `Passwords.txt` file.
 - b. Stop the Prometheus service: `service prometheus stop`
 - c. Add the SSH private key to the SSH agent. Enter: `ssh-add`
 - d. Enter the SSH Access Password listed in the `Passwords.txt` file.
 - e. Copy the Prometheus database from the source Admin Node to the recovered Admin Node:
`/usr/local/prometheus/bin/prometheus-clone-db.sh Source_Admin_Node_IP`
 - f. When prompted, press **Enter** to confirm that you want to destroy the new Prometheus database on the recovered Admin Node.

The original Prometheus database and its historical data are copied to the recovered Admin Node. When the copy operation is done, the script starts the recovered Admin Node. The following status

appears:

Database cloned, starting services

g. When you no longer require passwordless access to other servers, remove the private key from the SSH agent. Enter: `ssh-add -D`

4. Restart the Prometheus service on the source Admin Node. `service prometheus start`

Recovering from non-primary Admin Node failures

You must complete the following tasks to recover from a non-primary Admin Node failure. One Admin Node hosts the Configuration Management Node (CMN) service and is known as the primary Admin Node. Although you can have multiple Admin Nodes, each StorageGRID system includes only one primary Admin Node. All other Admin Nodes are non-primary Admin Nodes.

Related information

[SG100 & SG1000 services appliances](#)

Steps

- [Copying audit logs from the failed non-primary Admin Node](#)
- [Replacing a non-primary Admin Node](#)
- [Selecting Start Recovery to configure a non-primary Admin Node](#)
- [Restoring the audit log on the recovered non-primary Admin Node](#)
- [Resetting the preferred sender on the recovered non-primary Admin Node](#)
- [Restoring the Admin Node database when recovering a non-primary Admin Node](#)
- [Restoring Prometheus metrics when recovering a non-primary Admin Node](#)

Copying audit logs from the failed non-primary Admin Node

If you are able to copy audit logs from the failed Admin Node, you should preserve them to maintain the grid's record of system activity and usage. You can restore the preserved audit logs to the recovered non-primary Admin Node after it is up and running.

This procedure copies the audit log files from the failed Admin Node to a temporary location on a separate grid node. These preserved audit logs can then be copied to the replacement Admin Node. Audit logs are not automatically copied to the new Admin Node.

Depending on the type of failure, you might not be able to copy audit logs from a failed Admin Node. If the deployment has only one Admin Node, the recovered Admin Node starts recording events to the audit log in a new empty file and previously recorded data is lost. If the deployment includes more than one Admin Node, you can recover the audit logs from another Admin Node.



If the audit logs are not accessible on the failed Admin Node now, you might be able to access them later, for example, after host recovery.

1. Log in to the failed Admin Node if possible. Otherwise, log in to the primary Admin Node or another Admin Node, if available.

- a. Enter the following command: `ssh admin@grid_node_IP`
- b. Enter the password listed in the `Passwords.txt` file.
- c. Enter the following command to switch to root: `su -`
- d. Enter the password listed in the `Passwords.txt` file.

When you are logged in as root, the prompt changes from `$` to `#`.

2. Stop the AMS service to prevent it from creating a new log file: `service ams stop`
3. Rename the `audit.log` file so that it does not overwrite the existing file when you copy it to the recovered Admin Node.

Rename `audit.log` to a unique numbered file name such as `yyyy-mm-dd.txt.1`. For example, you can rename the `audit.log` file to `2015-10-25.txt.1`

```
cd /var/local/audit/export1s -l`mv audit.log 2015-10-25.txt.1
```

4. Restart the AMS service: `service ams start`
5. Create the directory to copy all audit log files to a temporary location on a separate grid node: `ssh admin@grid_node_IP mkdir -p /var/local/tmp/saved-audit-logs`

When prompted, enter the password for admin.

6. Copy all audit log files: `scp -p * admin@grid_node_IP:/var/local/tmp/saved-audit-logs`

When prompted, enter the password for admin.

7. Log out as root: `exit`

Replacing a non-primary Admin Node

To recover a non-primary Admin Node, you first must replace the physical or virtual hardware.

You can replace a failed non-primary Admin Node with a non-primary Admin Node running on the same platform, or you can replace a non-primary Admin Node running on VMware or a Linux host with a non-primary Admin Node hosted on a services appliance.

Use the procedure that matches the replacement platform you select for the node. After you complete the node replacement procedure (which is suitable for all node types), that procedure will direct you to the next step for non-primary Admin Node recovery.

Replacement platform	Procedure
VMware	Replacing a VMware node
Linux	Replacing a Linux node
SG100 and SG1000 services appliances	Replacing a services appliance

Replacement platform	Procedure
OpenStack	NetApp-provided virtual machine disk files and scripts for OpenStack are no longer supported for recovery operations. If you need to recover a node running in an OpenStack deployment, download the files for your Linux operating system. Then, follow the procedure for replacing a Linux node.

Selecting Start Recovery to configure a non-primary Admin Node

After replacing a non-primary Admin Node, you must select Start Recovery in the Grid Manager to configure the new node as a replacement for the failed node.

What you'll need

- You must be signed in to the Grid Manager using a supported browser.
- You must have the Maintenance or Root Access permission.
- You must have the provisioning passphrase.
- You must have deployed and configured the replacement node.

Steps

1. From the Grid Manager, select **Maintenance > Maintenance Tasks > Recovery**.
2. Select the grid node you want to recover in the Pending Nodes list.

Nodes appear in the list after they fail, but you cannot select a node until it has been reinstalled and is ready for recovery.

3. Enter the **Provisioning Passphrase**.
4. Click **Start Recovery**.

Recovery

Select the failed grid node to recover, enter your provisioning passphrase, and then click Start Recovery to begin the recovery procedure.

Pending Nodes

Name	IPv4 Address	State	Recoverable
104-217-S1	10.96.104.217	Unknown	✓

Passphrase

Provisioning Passphrase

Start Recovery

5. Monitor the progress of the recovery in the Recovering Grid Node table.



While the recovery procedure is running, you can click **Reset** to start a new recovery. An Info dialog box appears, indicating that the node will be left in an indeterminate state if you reset the procedure.

Info

Reset Recovery

Resetting the recovery procedure leaves the deployed grid node in an indeterminate state. To retry a recovery after resetting the procedure, you must restore the node to a pre-installed state:

- For VMware nodes, delete the deployed VM and then redeploy it.
- For StorageGRID appliance nodes, run "sgareinstall" on the node.
- For Linux nodes, run "storagegrid node force-recovery *node-name*" on the Linux host.

Do you want to reset recovery?

Cancel

OK

If you want to retry the recovery after resetting the procedure, you must restore the node to a pre-installed state, as follows:

- **VMware:** Delete the deployed virtual grid node. Then, when you are ready to restart the recovery, redeploy the node.
 - **Linux:** Restart the node by running this command on the Linux host: `storagegrid node force-recovery node-name`
 - **Appliance:** If you want to retry the recovery after resetting the procedure, you must restore the appliance node to a pre-installed state by running `sgareinstall` on the node.
6. If single sign-on (SSO) is enabled for your StorageGRID system and the relying party trust for the Admin Node you recovered was configured to use the default Management Interface Server Certificate, update (or delete and recreate) the node's relying party trust in Active Directory Federation Services (AD FS). Use the new default server certificate that was generated during the Admin Node recovery process.



To configure a relying party trust, see the instructions for administering StorageGRID. To access the default server certificate, log in to the command shell of the Admin Node. Go to the `/var/local/mgmt-api` directory, and select the `server.crt` file.

Related information

[Administer StorageGRID](#)

[Preparing an appliance for reinstallation \(platform replacement only\)](#)

Restoring the audit log on the recovered non-primary Admin Node

If you were able to preserve the audit log from the failed non-primary Admin Node, so that historical audit log information is retained, you can copy it to the non-primary Admin Node you are recovering.

- The recovered Admin Node must be installed and running.
- You must have copied the audit logs to another location after the original Admin Node failed.

If an Admin Node fails, audit logs saved to that Admin Node are potentially lost. It might be possible to preserve data from loss by copying audit logs from the failed Admin Node and then restoring these audit logs to the recovered Admin Node. Depending on the failure, it might not be possible to copy audit logs from the failed Admin Node. In that case, if the deployment has more than one Admin Node, you can recover audit logs from another Admin Node as audit logs are replicated to all Admin Nodes.

If there is only one Admin Node and the audit log cannot be copied from the failed node, the recovered Admin Node starts recording events to the audit log as if the installation is new.

You must recover an Admin Node as soon as possible to restore logging functionality.

1. Log in to the recovered Admin Node:

- Enter the following command: `+ ssh admin@recovery_Admin_Node_IP`
- Enter the password listed in the `Passwords.txt` file.
- Enter the following command to switch to root: `su -`
- Enter the password listed in the `Passwords.txt` file.

After you are logged in as root, the prompt changes from `$` to `#`.

2. Check which audit files have been preserved:

```
cd /var/local/audit/export
```

3. Copy the preserved audit log files to the recovered Admin Node:

```
scp admin@grid_node_IP:/var/local/tmp/saved-audit-logs/YYYY*
```

When prompted, enter the password for admin.

4. For security, delete the audit logs from the failed grid node after verifying that they have been copied successfully to the recovered Admin Node.

5. Update the user and group settings of the audit log files on the recovered Admin Node:

```
chown ams-user:bycast *
```

6. Log out as root: `exit`

You must also restore any pre-existing client access to the audit share. For more information, see the instructions for administering StorageGRID.

Related information

[Administer StorageGRID](#)

Resetting the preferred sender on the recovered non-primary Admin Node

If the non-primary Admin Node you are recovering is currently set as the preferred sender of alert notifications, alarm notifications, and AutoSupport messages, you must

reconfigure this setting in the StorageGRID system.

What you'll need

- You must be signed in to the Grid Manager using a supported browser.
- You must have specific access permissions.
- The recovered Admin Node must be installed and running.

Steps

1. Select **Configuration > System Settings > Display Options**.
2. Select the recovered Admin Node from the **Preferred Sender** drop-down list.
3. Click **Apply Changes**.

Related information

[Administer StorageGRID](#)

Restoring the Admin Node database when recovering a non-primary Admin Node

If you want to retain the historical information about attributes, alarms, and alerts on a non-primary Admin Node that has failed, you can restore the Admin Node database from the primary Admin Node.

- The recovered Admin Node must be installed and running.
- The StorageGRID system must include at least two Admin Nodes.
- You must have the `Passwords.txt` file.
- You must have the provisioning passphrase.

If an Admin Node fails, the historical information stored in its Admin Node database is lost. This database includes the following information:

- Alert history
- Alarm history
- Historical attribute data, which is used in the charts and text reports available from the **Support > Tools > Grid Topology** page.

When you recover an Admin Node, the software installation process creates an empty Admin Node database on the recovered node. However, the new database only includes information for servers and services that are currently part of the system or added later.

If you restored a non-primary Admin Node, you can restore the historical information by copying the Admin Node database from the primary Admin Node (the *source Admin Node*) to the recovered node.



Copying the Admin Node database might take several hours. Some Grid Manager features will be unavailable while services are stopped on the source node.

1. Log in to the source Admin Node:
 - a. Enter the following command: `ssh admin@grid_node_IP`
 - b. Enter the password listed in the `Passwords.txt` file.

- c. Enter the following command to switch to root: `su -`
- d. Enter the password listed in the `Passwords.txt` file.
2. Run the following command from the source Admin Node. Then, enter the provisioning passphrase if prompted. `recover-access-points`
3. From the source Admin Node, stop the MI service: `service mi stop`
4. From the source Admin Node, stop the Management Application Program Interface (mgmt-api) service: `service mgmt-api stop`
5. Complete the following steps on the recovered Admin Node:
 - a. Log in to the recovered Admin Node:
 - i. Enter the following command: `ssh admin@grid_node_IP`
 - ii. Enter the password listed in the `Passwords.txt` file.
 - iii. Enter the following command to switch to root: `su -`
 - iv. Enter the password listed in the `Passwords.txt` file.
 - b. Stop the MI service: `service mi stop`
 - c. Stop the mgmt-api service: `service mgmt-api stop`
 - d. Add the SSH private key to the SSH agent. Enter: `ssh-add`
 - e. Enter the SSH Access Password listed in the `Passwords.txt` file.
 - f. Copy the database from the source Admin Node to the recovered Admin Node: `/usr/local/mi/bin/mi-clone-db.sh Source_Admin_Node_IP`
 - g. When prompted, confirm that you want to overwrite the MI database on the recovered Admin Node.

The database and its historical data are copied to the recovered Admin Node. When the copy operation is done, the script starts the recovered Admin Node.
 - h. When you no longer require passwordless access to other servers, remove the private key from the SSH agent. Enter: `ssh-add -D`
6. Restart the services on the source Admin Node: `service servermanager start`

Restoring Prometheus metrics when recovering a non-primary Admin Node

Optionally, you can retain the historical metrics maintained by Prometheus on a non-primary Admin Node that has failed.

- The recovered Admin Node must be installed and running.
- The StorageGRID system must include at least two Admin Nodes.
- You must have the `Passwords.txt` file.
- You must have the provisioning passphrase.

If an Admin Node fails, the metrics maintained in the Prometheus database on the Admin Node are lost. When you recover the Admin Node, the software installation process creates a new Prometheus database. After the recovered Admin Node is started, it records metrics as if you had performed a new installation of the StorageGRID system.

If you restored a non-primary Admin Node, you can restore the historical metrics by copying the Prometheus database from the primary Admin Node (the *source Admin Node*) to the recovered Admin Node.



Copying the Prometheus database might take an hour or more. Some Grid Manager features will be unavailable while services are stopped on the source Admin Node.

1. Log in to the source Admin Node:
 - a. Enter the following command: `ssh admin@grid_node_IP`
 - b. Enter the password listed in the `Passwords.txt` file.
 - c. Enter the following command to switch to root: `su -`
 - d. Enter the password listed in the `Passwords.txt` file.
2. From the source Admin Node, stop the Prometheus service: `service prometheus stop`
3. Complete the following steps on the recovered Admin Node:
 - a. Log in to the recovered Admin Node:
 - i. Enter the following command: `ssh admin@grid_node_IP`
 - ii. Enter the password listed in the `Passwords.txt` file.
 - iii. Enter the following command to switch to root: `su -`
 - iv. Enter the password listed in the `Passwords.txt` file.
 - b. Stop the Prometheus service: `service prometheus stop`
 - c. Add the SSH private key to the SSH agent. Enter: `ssh-add`
 - d. Enter the SSH Access Password listed in the `Passwords.txt` file.
 - e. Copy the Prometheus database from the source Admin Node to the recovered Admin Node:
`/usr/local/prometheus/bin/prometheus-clone-db.sh Source_Admin_Node_IP`
 - f. When prompted, press **Enter** to confirm that you want to destroy the new Prometheus database on the recovered Admin Node.

The original Prometheus database and its historical data are copied to the recovered Admin Node. When the copy operation is done, the script starts the recovered Admin Node. The following status appears:

Database cloned, starting services
 - g. When you no longer require passwordless access to other servers, remove the private key from the SSH agent. Enter: `ssh-add -D`
4. Restart the Prometheus service on the source Admin Node. `service prometheus start`

Copyright information

Copyright © 2024 NetApp, Inc. All Rights Reserved. Printed in the U.S. No part of this document covered by copyright may be reproduced in any form or by any means—graphic, electronic, or mechanical, including photocopying, recording, taping, or storage in an electronic retrieval system—without prior written permission of the copyright owner.

Software derived from copyrighted NetApp material is subject to the following license and disclaimer:

THIS SOFTWARE IS PROVIDED BY NETAPP "AS IS" AND WITHOUT ANY EXPRESS OR IMPLIED WARRANTIES, INCLUDING, BUT NOT LIMITED TO, THE IMPLIED WARRANTIES OF MERCHANTABILITY AND FITNESS FOR A PARTICULAR PURPOSE, WHICH ARE HEREBY DISCLAIMED. IN NO EVENT SHALL NETAPP BE LIABLE FOR ANY DIRECT, INDIRECT, INCIDENTAL, SPECIAL, EXEMPLARY, OR CONSEQUENTIAL DAMAGES (INCLUDING, BUT NOT LIMITED TO, PROCUREMENT OF SUBSTITUTE GOODS OR SERVICES; LOSS OF USE, DATA, OR PROFITS; OR BUSINESS INTERRUPTION) HOWEVER CAUSED AND ON ANY THEORY OF LIABILITY, WHETHER IN CONTRACT, STRICT LIABILITY, OR TORT (INCLUDING NEGLIGENCE OR OTHERWISE) ARISING IN ANY WAY OUT OF THE USE OF THIS SOFTWARE, EVEN IF ADVISED OF THE POSSIBILITY OF SUCH DAMAGE.

NetApp reserves the right to change any products described herein at any time, and without notice. NetApp assumes no responsibility or liability arising from the use of products described herein, except as expressly agreed to in writing by NetApp. The use or purchase of this product does not convey a license under any patent rights, trademark rights, or any other intellectual property rights of NetApp.

The product described in this manual may be protected by one or more U.S. patents, foreign patents, or pending applications.

LIMITED RIGHTS LEGEND: Use, duplication, or disclosure by the government is subject to restrictions as set forth in subparagraph (b)(3) of the Rights in Technical Data -Noncommercial Items at DFARS 252.227-7013 (FEB 2014) and FAR 52.227-19 (DEC 2007).

Data contained herein pertains to a commercial product and/or commercial service (as defined in FAR 2.101) and is proprietary to NetApp, Inc. All NetApp technical data and computer software provided under this Agreement is commercial in nature and developed solely at private expense. The U.S. Government has a non-exclusive, non-transferrable, nonsublicensable, worldwide, limited irrevocable license to use the Data only in connection with and in support of the U.S. Government contract under which the Data was delivered. Except as provided herein, the Data may not be used, disclosed, reproduced, modified, performed, or displayed without the prior written approval of NetApp, Inc. United States Government license rights for the Department of Defense are limited to those rights identified in DFARS clause 252.227-7015(b) (FEB 2014).

Trademark information

NETAPP, the NETAPP logo, and the marks listed at <http://www.netapp.com/TM> are trademarks of NetApp, Inc. Other company and product names may be trademarks of their respective owners.