



# **Recovering from Gateway Node failures**

## **StorageGRID**

NetApp  
October 03, 2025

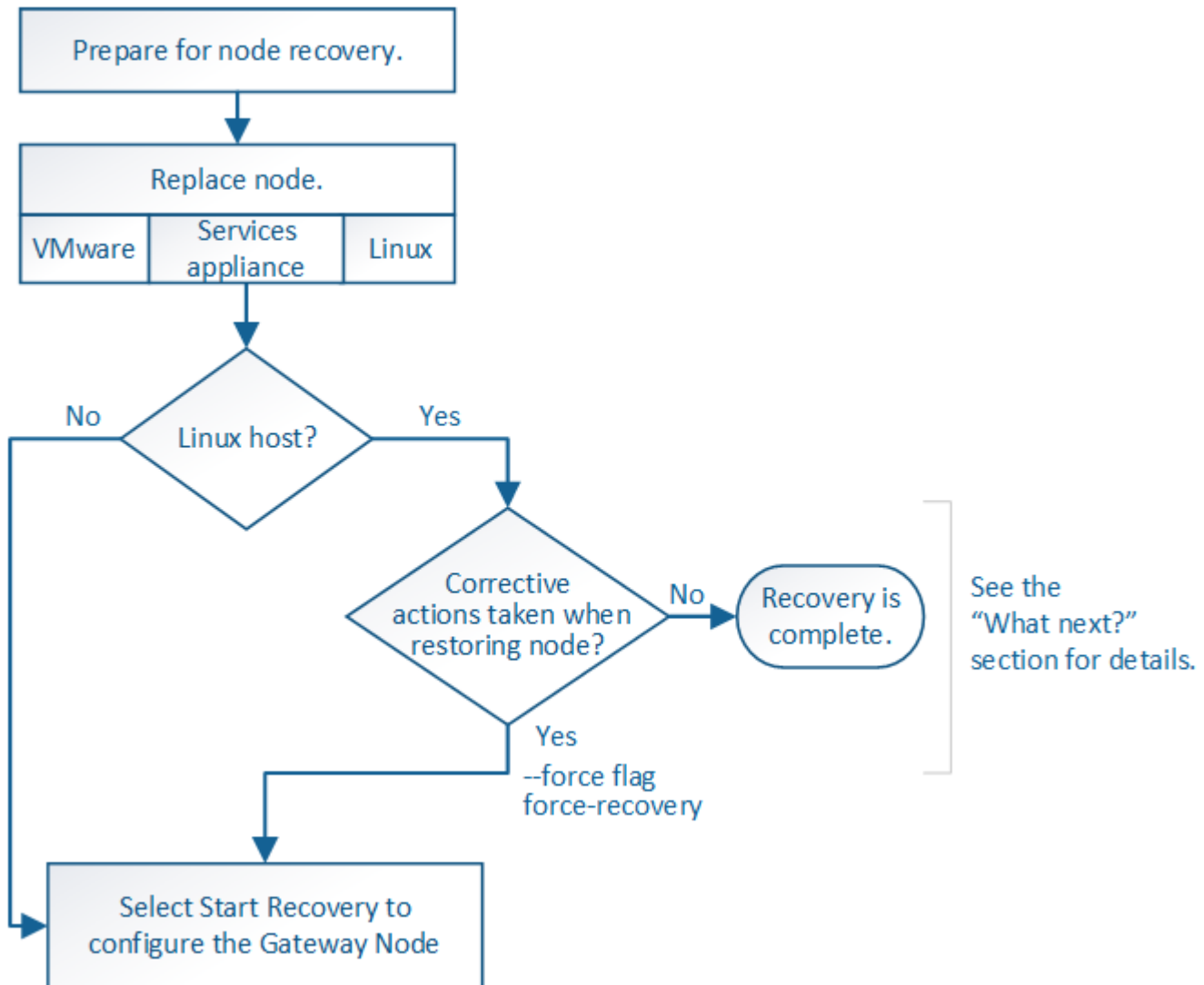
This PDF was generated from <https://docs.netapp.com/us-en/storagegrid-115/maintain/replacing-gateway-node.html> on October 03, 2025. Always check docs.netapp.com for the latest.

# Table of Contents

- Recovering from Gateway Node failures ..... 1
  - Replacing a Gateway Node ..... 1
  - Selecting Start Recovery to configure a Gateway Node ..... 2

# Recovering from Gateway Node failures

You must complete a sequence of tasks in exact order to recover from a Gateway Node failure.



## Related information

[SG100 & SG1000 services appliances](#)

## Steps

- [Replacing a Gateway Node](#)
- [Selecting Start Recovery to configure a Gateway Node](#)

## Replacing a Gateway Node

You can replace a failed Gateway Node with a Gateway Node running on the same physical or virtual hardware, or you can replace a Gateway Node running on VMware or a Linux host with a Gateway Node hosted on a services appliance.

The node replacement procedure you must follow depends on which platform will be used by the replacement

node. After you complete the node replacement procedure (which is suitable for all node types), that procedure will direct you to the next step for Gateway Node recovery.

Replacement platform	Procedure
VMware	<a href="#">Replacing a VMware node</a>
Linux	<a href="#">Replacing a Linux node</a>
SG100 and SG1000 services appliances	<a href="#">Replacing a services appliance</a>
OpenStack	NetApp-provided virtual machine disk files and scripts for OpenStack are no longer supported for recovery operations. If you need to recover a node running in an OpenStack deployment, download the files for your Linux operating system. Then, follow the procedure for replacing a Linux node.

## Selecting Start Recovery to configure a Gateway Node

After replacing a Gateway Node, you must select Start Recovery in the Grid Manager to configure the new node as a replacement for the failed node.

### What you'll need

- You must be signed in to the Grid Manager using a supported browser.
- You must have the Maintenance or Root Access permission.
- You must have the provisioning passphrase.
- You must have deployed and configured the replacement node.

### Steps

1. From the Grid Manager, select **Maintenance > Maintenance Tasks > Recovery**.
2. Select the grid node you want to recover in the Pending Nodes list.

Nodes appear in the list after they fail, but you cannot select a node until it has been reinstalled and is ready for recovery.

3. Enter the **Provisioning Passphrase**.
4. Click **Start Recovery**.

## Recovery

Select the failed grid node to recover, enter your provisioning passphrase, and then click Start Recovery to begin the recovery procedure.

### Pending Nodes

<div>Search <input type="text"/></div>				
	Name	IPv4 Address	State	Recoverable
<input checked="" type="radio"/>	104-217-S1	10.96.104.217	Unknown	

### Passphrase

Provisioning Passphrase

Start Recovery

5. Monitor the progress of the recovery in the Recovering Grid Node table.



While the recovery procedure is running, you can click **Reset** to start a new recovery. An Info dialog box appears, indicating that the node will be left in an indeterminate state if you reset the procedure.

### Info

#### Reset Recovery

Resetting the recovery procedure leaves the deployed grid node in an indeterminate state. To retry a recovery after resetting the procedure, you must restore the node to a pre-installed state:

- For VMware nodes, delete the deployed VM and then redeploy it.
- For StorageGRID appliance nodes, run "sgareinstall" on the node.
- For Linux nodes, run "storagegrid node force-recovery *node-name*" on the Linux host.

Do you want to reset recovery?

Cancel

OK

If you want to retry the recovery after resetting the procedure, you must restore the node to a pre-installed state, as follows:

- **VMware:** Delete the deployed virtual grid node. Then, when you are ready to restart the recovery, redeploy the node.
- **Linux:** Restart the node by running this command on the Linux host: `storagegrid node force-recovery node-name`
- **Appliance:** If you want to retry the recovery after resetting the procedure, you must restore the appliance node to a pre-installed state by running `sgareinstall` on the node.

**Related information**

[Preparing an appliance for reinstallation \(platform replacement only\)](#)

## Copyright information

Copyright © 2025 NetApp, Inc. All Rights Reserved. Printed in the U.S. No part of this document covered by copyright may be reproduced in any form or by any means—graphic, electronic, or mechanical, including photocopying, recording, taping, or storage in an electronic retrieval system—without prior written permission of the copyright owner.

Software derived from copyrighted NetApp material is subject to the following license and disclaimer:

THIS SOFTWARE IS PROVIDED BY NETAPP “AS IS” AND WITHOUT ANY EXPRESS OR IMPLIED WARRANTIES, INCLUDING, BUT NOT LIMITED TO, THE IMPLIED WARRANTIES OF MERCHANTABILITY AND FITNESS FOR A PARTICULAR PURPOSE, WHICH ARE HEREBY DISCLAIMED. IN NO EVENT SHALL NETAPP BE LIABLE FOR ANY DIRECT, INDIRECT, INCIDENTAL, SPECIAL, EXEMPLARY, OR CONSEQUENTIAL DAMAGES (INCLUDING, BUT NOT LIMITED TO, PROCUREMENT OF SUBSTITUTE GOODS OR SERVICES; LOSS OF USE, DATA, OR PROFITS; OR BUSINESS INTERRUPTION) HOWEVER CAUSED AND ON ANY THEORY OF LIABILITY, WHETHER IN CONTRACT, STRICT LIABILITY, OR TORT (INCLUDING NEGLIGENCE OR OTHERWISE) ARISING IN ANY WAY OUT OF THE USE OF THIS SOFTWARE, EVEN IF ADVISED OF THE POSSIBILITY OF SUCH DAMAGE.

NetApp reserves the right to change any products described herein at any time, and without notice. NetApp assumes no responsibility or liability arising from the use of products described herein, except as expressly agreed to in writing by NetApp. The use or purchase of this product does not convey a license under any patent rights, trademark rights, or any other intellectual property rights of NetApp.

The product described in this manual may be protected by one or more U.S. patents, foreign patents, or pending applications.

LIMITED RIGHTS LEGEND: Use, duplication, or disclosure by the government is subject to restrictions as set forth in subparagraph (b)(3) of the Rights in Technical Data -Noncommercial Items at DFARS 252.227-7013 (FEB 2014) and FAR 52.227-19 (DEC 2007).

Data contained herein pertains to a commercial product and/or commercial service (as defined in FAR 2.101) and is proprietary to NetApp, Inc. All NetApp technical data and computer software provided under this Agreement is commercial in nature and developed solely at private expense. The U.S. Government has a non-exclusive, non-transferrable, nonsublicensable, worldwide, limited irrevocable license to use the Data only in connection with and in support of the U.S. Government contract under which the Data was delivered. Except as provided herein, the Data may not be used, disclosed, reproduced, modified, performed, or displayed without the prior written approval of NetApp, Inc. United States Government license rights for the Department of Defense are limited to those rights identified in DFARS clause 252.227-7015(b) (FEB 2014).

## Trademark information

NETAPP, the NETAPP logo, and the marks listed at <http://www.netapp.com/TM> are trademarks of NetApp, Inc. Other company and product names may be trademarks of their respective owners.