



# Recovering from Storage Node failures

## StorageGRID

NetApp  
October 03, 2025

This PDF was generated from <https://docs.netapp.com/us-en/storagegrid-115/maintain/recovering-storage-node-that-has-been-down-more-than-15-days.html> on October 03, 2025. Always check [docs.netapp.com](https://docs.netapp.com) for the latest.

# Table of Contents

Recovering from Storage Node failures . . . . .	1
Recovering a Storage Node that has been down more than 15 days . . . . .	2
Recovering a StorageGRID appliance Storage Node . . . . .	4
Preparing an appliance Storage Node for reinstallation . . . . .	5
Starting StorageGRID appliance installation . . . . .	6
Monitoring StorageGRID appliance installation . . . . .	9
Selecting Start Recovery to configure an appliance Storage Node . . . . .	10
Remounting and reformatting appliance storage volumes (“Manual Steps”) . . . . .	12
Restoring object data to a storage volume for an appliance . . . . .	18
Checking the storage state after recovering an appliance Storage Node . . . . .	23
Recovering from storage volume failure where the system drive is intact . . . . .	23
Reviewing warnings about storage volume recovery . . . . .	24
Identifying and unmounting failed storage volumes . . . . .	25
Recovering failed storage volumes and rebuilding the Cassandra database . . . . .	28
Restoring object data to a storage volume where the system drive is intact . . . . .	30
Checking the storage state after recovering storage volumes . . . . .	35
Recovering from system drive failure . . . . .	36
Reviewing warnings for Storage Node system drive recovery . . . . .	38
Replacing the Storage Node . . . . .	39
Selecting Start Recovery to configure a Storage Node . . . . .	39
Remounting and reformatting storage volumes (“Manual Steps”) . . . . .	41
Restoring object data to a storage volume, if required . . . . .	47
Checking the storage state after recovering a Storage Node system drive . . . . .	52

# Recovering from Storage Node failures

The procedure for recovering a failed Storage Node depends on the type of failure and the type of Storage Node that has failed.

Use this table to select the recovery procedure for a failed Storage Node.

Issue	Action	Notes
<ul style="list-style-type: none"><li>• More than one Storage Node has failed.</li><li>• A second Storage Node has failed less than 15 days after a Storage Node failure or recovery.</li></ul> <p>This includes the case where a Storage Node fails while recovery of another Storage Node is still in progress.</p>	You must contact technical support.	<p>If all failed Storage Nodes are at the same site, it might be necessary to perform a site recovery procedure.</p> <p>Technical support will assess your situation and develop a recovery plan.</p> <p><a href="#">How site recovery is performed by technical support</a></p> <p>Recovering more than one Storage Node (or more than one Storage Node within 15 days) might affect the integrity of the Cassandra database, which can cause data loss.</p> <p>Technical support can determine when it is safe to begin recovery of a second Storage Node.</p> <p><b>Note:</b> If more than one Storage Node that contains the ADC service fails at a site, you lose any pending platform service requests for that site.</p>
A Storage Node has been offline for more than 15 days.	<a href="#">Recovering a Storage Node that has been down more than 15 days</a>	This procedure is required to ensure Cassandra database integrity.
An appliance Storage Node has failed.	<a href="#">Recovering a StorageGRID appliance Storage Node</a>	The recovery procedure for appliance Storage Nodes is the same for all failures.
One or more storage volumes have failed, but the system drive is intact	<a href="#">Recovering from storage volume failure where the system drive is intact</a>	This procedure is used for software-based Storage Nodes.

Issue	Action	Notes
The system drive has failed.	<a href="#">Recovering from system drive failure</a>	The node replacement procedure depends on the deployment platform and on whether any storage volumes have also failed.



Some StorageGRID recovery procedures use Reaper to handle Cassandra repairs. Repairs occur automatically as soon as the related or required services have started. You might notice script output that mentions “reaper” or “Cassandra repair.” If you see an error message indicating the repair has failed, run the command indicated in the error message.

## Recovering a Storage Node that has been down more than 15 days

If a single Storage Node has been offline and not connected to other Storage Nodes for more than 15 days, you must rebuild Cassandra on the node.

### What you’ll need

- You have checked that a Storage Node decommissioning is not in progress, or you have paused the node decommission procedure. (In the Grid Manager, select **Maintenance** > **Maintenance Tasks** > **Decommission**.)
- You have checked that an expansion is not in progress. (In the Grid Manager, select **Maintenance** > **Maintenance Tasks** > **Expansion**.)

### About this task

Storage Nodes have a Cassandra database that includes object metadata. If a Storage Node has not been able to communicate with other Storage Nodes for more than 15 days, StorageGRID assumes that node’s Cassandra database is stale. The Storage Node cannot rejoin the grid until Cassandra has been rebuilt using information from other Storage Nodes.

Use this procedure to rebuild Cassandra only if a single Storage Node is down. Contact technical support if additional Storage Nodes are offline or if Cassandra has been rebuilt on another Storage Node within the last 15 days; for example, Cassandra might have been rebuilt as part of the procedures to recover failed storage volumes or to recover a failed Storage Node.



If more than one Storage Node has failed (or is offline), contact technical support. Do not perform the following recovery procedure. Data loss could occur.



If this is the second Storage Node failure in less than 15 days after a Storage Node failure or recovery, contact technical support. Do not perform the following recovery procedure. Data loss could occur.



If more than one Storage Node at a site has failed, a site recovery procedure might be required. Contact technical support.

### How site recovery is performed by technical support

### Steps

1. If necessary, power on the Storage Node that needs to be recovered.
2. Log in to the grid node:
  - a. Enter the following command: `ssh admin@grid_node_IP`
  - b. Enter the password listed in the `Passwords.txt` file.
  - c. Enter the following command to switch to root: `su -`
  - d. Enter the password listed in the `Passwords.txt` file.

When you are logged in as root, the prompt changes from `$` to `#`.



If you are unable to log in to the grid node, the system disk might not be intact. Go to the procedure for recovering from system drive failure. [Recovering from system drive failure](#)

3. Perform the following checks on the Storage Node:
  - a. Issue this command: `nodetool status`  
  
The output should be `Connection refused`
  - b. In the Grid Manager, select **Support > Tools > Grid Topology**.
  - c. Select *site* > **Storage Node > SSM > Services**. Verify that the Cassandra service displays `Not Running`.
  - d. Select **Storage Node > SSM > Resources**. Verify that there is no error status in the Volumes section.
  - e. Issue this command: `grep -i Cassandra /var/local/log/servermanager.log`

You should see the following message in the output:

```
Cassandra not started because it has been offline for more than 15
day grace period - rebuild Cassandra
```

4. Issue this command, and monitor the script output: `check-cassandra-rebuild`
  - If storage services are running, you will be prompted to stop them. Enter: **y**
  - Review the warnings in the script. If none of them apply, confirm that you want to rebuild Cassandra. Enter: **y**



Some StorageGRID recovery procedures use Reaper to handle Cassandra repairs. Repairs occur automatically as soon as the related or required services have started. You might notice script output that mentions “reaper” or “Cassandra repair.” If you see an error message indicating the repair has failed, run the command indicated in the error message.

5. After the rebuild completes, perform the following checks:
  - a. In the Grid Manager, select **Support > Tools > Grid Topology**.
  - b. Select *site* > **recovered Storage Node > SSM > Services**.
  - c. Confirm that all services are running.

d. Select **DDS > Data Store**.

e. Confirm that the **Data Store Status** is “Up” and the **Data Store State** is “Normal.”

#### Related information

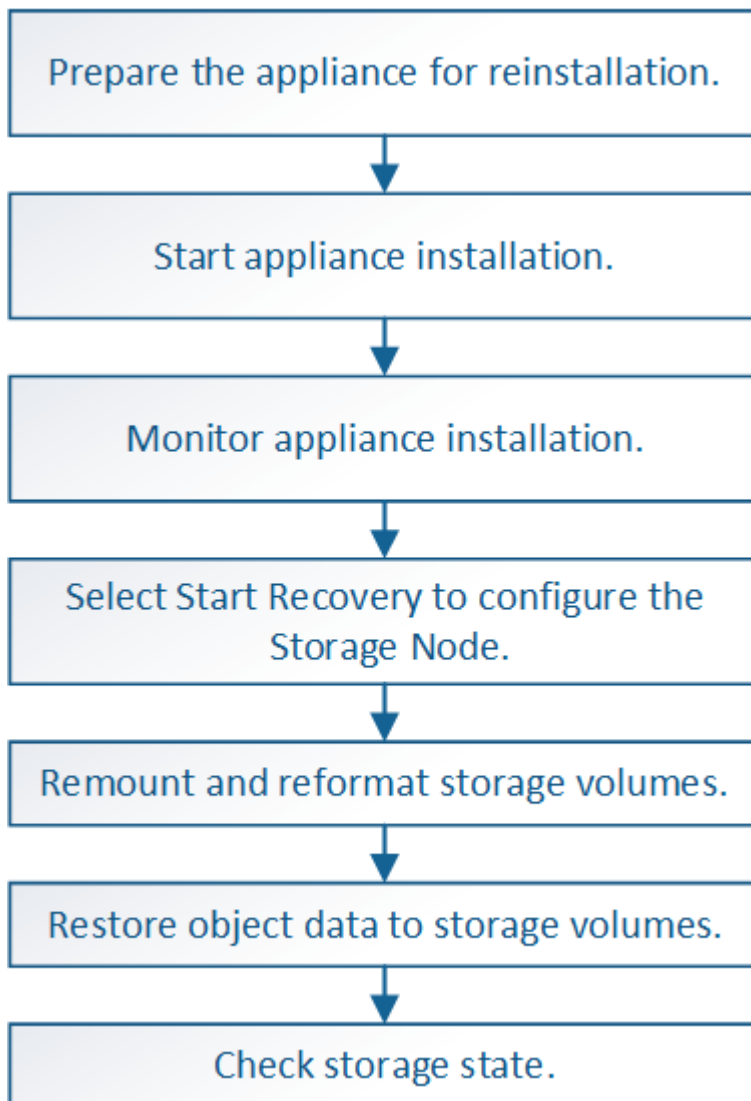
[Recovering from system drive failure](#)

## Recovering a StorageGRID appliance Storage Node

The procedure for recovering a failed StorageGRID appliance Storage Node is the same whether you are recovering from the loss of the system drive or from the loss of storage volumes only.

#### About this task

You must prepare the appliance and reinstall software, configure the node to rejoin the grid, reformat storage, and restore object data.



If more than one Storage Node has failed (or is offline), contact technical support. Do not perform the following recovery procedure. Data loss could occur.



If this is the second Storage Node failure in less than 15 days after a Storage Node failure or recovery, contact technical support. Rebuilding Cassandra on two or more Storage Nodes within 15 days can result in data loss.



If more than one Storage Node at a site has failed, a site recovery procedure might be required. Contact technical support.

#### How site recovery is performed by technical support



If ILM rules are configured to store only one replicated copy and the copy exists on a storage volume that has failed, you will not be able to recover the object.



If you encounter a Services: Status - Cassandra (SVST) alarm during recovery, see the monitoring and troubleshooting instructions to recover from the alarm by rebuilding Cassandra. After Cassandra is rebuilt, alarms should clear. If alarms do not clear, contact technical support.



For hardware maintenance procedures, such as instructions for replacing a controller or reinstalling SANtricity OS, see the installation and maintenance instructions for your storage appliance.

#### Related information

[Monitor & troubleshoot](#)

[SG6000 storage appliances](#)

[SG5700 storage appliances](#)

[SG5600 storage appliances](#)

#### Steps

- [Preparing an appliance Storage Node for reinstallation](#)
- [Starting StorageGRID appliance installation](#)
- [Monitoring StorageGRID appliance installation](#)
- [Selecting Start Recovery to configure an appliance Storage Node](#)
- [Remounting and reformatting appliance storage volumes \(“Manual Steps”\)](#)
- [Restoring object data to a storage volume for an appliance](#)
- [Checking the storage state after recovering an appliance Storage Node](#)

### Preparing an appliance Storage Node for reinstallation

When recovering an appliance Storage Node, you must first prepare the appliance for reinstallation of StorageGRID software.

1. Log in to the failed Storage Node:
  - a. Enter the following command: `ssh admin@grid_node_IP`
  - b. Enter the password listed in the `Passwords.txt` file.

- c. Enter the following command to switch to root: `su -`
- d. Enter the password listed in the `Passwords.txt` file.

When you are logged in as root, the prompt changes from `$` to `#`.

2. Prepare the appliance Storage Node for the installation of StorageGRID software. `sgareinstall`
3. When prompted to continue, enter: `y`

The appliance reboots, and your SSH session ends. It usually takes about 5 minutes for the StorageGRID Appliance Installer to become available, although in some cases you might need to wait up to 30 minutes.

The StorageGRID appliance Storage Node is reset, and data on the Storage Node is no longer accessible. IP addresses configured during the original installation process should remain intact; however, it is recommended that you confirm this when the procedure completes.

After executing the `sgareinstall` command, all StorageGRID-provisioned accounts, passwords, and SSH keys are removed, and new host keys are generated.

## Starting StorageGRID appliance installation

To install StorageGRID on an appliance Storage Node, you use the StorageGRID Appliance Installer, which is included on the appliance.

### What you'll need

- The appliance has been installed in a rack, connected to your networks, and powered on.
- Network links and IP addresses have been configured for the appliance using the StorageGRID Appliance Installer.
- You know the IP address of the primary Admin Node for the StorageGRID grid.
- All Grid Network subnets listed on the IP Configuration page of the StorageGRID Appliance Installer have been defined in the Grid Network Subnet List on the primary Admin Node.
- You have completed these prerequisite tasks by following the installation and maintenance instructions for your storage appliance:
  - [SG5600 storage appliances](#)
  - [SG5700 storage appliances](#)
  - [SG6000 storage appliances](#)
- You are using a supported web browser.
- You know one of the IP addresses assigned to the compute controller in the appliance. You can use the IP address for the Admin Network (management port 1 on the controller), the Grid Network, or the Client Network.

### About this task

To install StorageGRID on an appliance Storage Node:

- You specify or confirm the IP address of the primary Admin Node and the name of the node.
- You start the installation and wait as volumes are configured and the software is installed.
- Partway through the process, the installation pauses. To resume the installation, you must sign into the Grid Manager and configure the pending Storage Node as a replacement for the failed node.



- After you have configured the node, the appliance installation process completes, and the appliance is rebooted.

## Steps

1. Open a browser and enter one of the IP addresses for the compute controller in the appliance.

`https://Controller_IP:8443`

The StorageGRID Appliance Installer Home page appears.

2. In the Primary Admin Node connection section, determine whether you need to specify the IP address for the primary Admin Node.

The StorageGRID Appliance Installer can discover this IP address automatically, assuming the primary Admin Node, or at least one other grid node with ADMIN\_IP configured, is present on the same subnet.

3. If this IP address is not shown or you need to change it, specify the address:

Option	Steps
Manual IP entry	<ol style="list-style-type: none"> <li>a. Unselect the <b>Enable Admin Node discovery</b> check box.</li> <li>b. Enter the IP address manually.</li> <li>c. Click <b>Save</b>.</li> <li>d. Wait while the connection state for the new IP address becomes "ready."</li> </ol>
Automatic discovery of all connected primary Admin Nodes	<ol style="list-style-type: none"> <li>a. Select the <b>Enable Admin Node discovery</b> check box.</li> <li>b. From the list of discovered IP addresses, select the primary Admin Node for the grid where this appliance Storage Node will be deployed.</li> <li>c. Click <b>Save</b>.</li> <li>d. Wait while the connection state for the new IP address becomes "ready."</li> </ol>

4. In the **Node Name** field, enter the same name that was used for the node you are recovering, and click **Save**.
5. In the Installation section, confirm that the current state is "Ready to start installation of node name into grid with Primary Admin Node admin\_ip" and that the **Start Installation** button is enabled.

If the **Start Installation** button is not enabled, you might need to change the network configuration or port settings. For instructions, see the installation and maintenance instructions for your appliance.

6. From the StorageGRID Appliance Installer home page, click **Start Installation**.

# NetApp® StorageGRID® Appliance Installer

[Home](#)[Configure Networking ▾](#)[Configure Hardware ▾](#)[Monitor Installation](#)[Advanced ▾](#)

## Home

 The installation is ready to be started. Review the settings below, and then click Start Installation.

### Primary Admin Node connection

Enable Admin Node  
discovery ☐

Primary Admin Node IP

Connection state

Connection to 172.16.4.210 ready

Cancel

Save

### Node name

Node name

Cancel

Save

### Installation

Current state

Ready to start installation of NetApp-SGA into grid with Admin Node 172.16.4.210.

Start Installation

The Current state changes to “Installation is in progress,” and the Monitor Installation page is displayed.



If you need to access the Monitor Installation page manually, click **Monitor Installation** from the menu bar.

### Related information

[SG100 & SG1000 services appliances](#)

[SG6000 storage appliances](#)

[SG5700 storage appliances](#)

[SG5600 storage appliances](#)

## Monitoring StorageGRID appliance installation

The StorageGRID Appliance Installer provides status until installation is complete. When the software installation is complete, the appliance is rebooted.

1. To monitor the installation progress, click **Monitor Installation** from the menu bar.

The Monitor Installation page shows the installation progress.

Monitor Installation

1. Configure storage			Running
Step	Progress	Status	
Connect to storage controller	<div></div>	Complete	
Clear existing configuration	<div></div>	Complete	
Configure volumes	<div></div>	Creating volume StorageGRID-obj-00	
Configure host settings	<div></div>	Pending	

2. Install OS	Pending
3. Install StorageGRID	Pending
4. Finalize installation	Pending

The blue status bar indicates which task is currently in progress. Green status bars indicate tasks that have completed successfully.



The installer ensures that tasks completed in a previous install are not re-run. If you are re-running an installation, any tasks that do not need to be re-run are shown with a green status bar and a status of "Skipped."

2. Review the progress of first two installation stages.

- **1. Configure storage**

During this stage, the installer connects to the storage controller, clears any existing configuration, communicates with SANtricity software to configure volumes, and configures host settings.

- **2. Install OS**

During this stage, the installer copies the base operating system image for StorageGRID to the appliance.

3. Continue monitoring the installation progress until the **Install StorageGRID** stage pauses and a message appears on the embedded console prompting you to approve this node on the Admin Node using the Grid Manager.

## Monitor Installation

1. Configure storage	Complete
2. Install OS	Complete
3. Install StorageGRID	Running
4. Finalize installation	Pending

Connected (unencrypted) to: QEMU

```

/platform.type: Device or resource busy
[2017-07-31T22:09:12.362566] INFO -- [INSG] NOTICE: seeding /var/local with c
ontainer data
[2017-07-31T22:09:12.366205] INFO -- [INSG] Fixing permissions
[2017-07-31T22:09:12.369633] INFO -- [INSG] Enabling syslog
[2017-07-31T22:09:12.511533] INFO -- [INSG] Stopping system logging: syslog-n
g.
[2017-07-31T22:09:12.570096] INFO -- [INSG] Starting system logging: syslog-n
g.
[2017-07-31T22:09:12.576360] INFO -- [INSG] Beginning negotiation for downloa
d of node configuration
[2017-07-31T22:09:12.581363] INFO -- [INSG]
[2017-07-31T22:09:12.585066] INFO -- [INSG]
[2017-07-31T22:09:12.588314] INFO -- [INSG]
[2017-07-31T22:09:12.591851] INFO -- [INSG]
[2017-07-31T22:09:12.594886] INFO -- [INSG]
[2017-07-31T22:09:12.598360] INFO -- [INSG]
[2017-07-31T22:09:12.601324] INFO -- [INSG]
[2017-07-31T22:09:12.604759] INFO -- [INSG]
[2017-07-31T22:09:12.607800] INFO -- [INSG]
[2017-07-31T22:09:12.610985] INFO -- [INSG]
[2017-07-31T22:09:12.614597] INFO -- [INSG]
[2017-07-31T22:09:12.618282] INFO -- [INSG] Please approve this node on the A
dmin Node GMI to proceed...

```

- Go to the procedure to configure the appliance Storage Node.

## Selecting Start Recovery to configure an appliance Storage Node

You must select Start Recovery in the Grid Manager to configure an appliance Storage Node as a replacement for the failed node.

### What you'll need

- You must be signed in to the Grid Manager using a supported browser.
- You must have the Maintenance or Root Access permission.
- You must have the provisioning passphrase.

- You must have deployed a recovery appliance Storage Node.
- You must know the start date of any repair jobs for erasure-coded data.
- You must have verified that the Storage Node has not been rebuilt within the last 15 days.

## Steps

1. From the Grid Manager, select **Maintenance > Maintenance Tasks > Recovery**.
2. Select the grid node you want to recover in the Pending Nodes list.

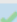
Nodes appear in the list after they fail, but you cannot select a node until it has been reinstalled and is ready for recovery.

3. Enter the **Provisioning Passphrase**.
4. Click **Start Recovery**.

### Recovery

Select the failed grid node to recover, enter your provisioning passphrase, and then click Start Recovery to begin the recovery procedure.

#### Pending Nodes

					Search 
	Name	IPv4 Address	State	Recoverable	
<input checked="" type="radio"/>	104-217-S1	10.96.104.217	Unknown		

#### Passphrase

Provisioning Passphrase

Start Recovery

5. Monitor the progress of the recovery in the Recovering Grid Node table.

When the grid node reaches the “Waiting for Manual Steps” stage, go to the next topic and perform the manual steps to remount and reformat appliance storage volumes.

### Recovery

Select the failed grid node to recover, enter your provisioning passphrase, and then click Start Recovery to begin the recovery procedure.

#### Recovering Grid Node

Name	Start Time	Progress	Stage
dc2-s3	2016-09-12 16:12:40 PDT	<div><div></div></div>	Waiting For Manual Steps

Reset



At any point during the recovery, you can click **Reset** to start a new recovery. An Info dialog box appears, indicating that the node will be left in an indeterminate state if you reset the procedure.

## Info

### Reset Recovery

Resetting the recovery procedure leaves the deployed grid node in an indeterminate state. To retry a recovery after resetting the procedure, you must restore the node to a pre-installed state:

- For VMware nodes, delete the deployed VM and then redeploy it.
- For StorageGRID appliance nodes, run "sgareinstall" on the node.
- For Linux nodes, run "storagegrid node force-recovery *node-name*" on the Linux host.

Do you want to reset recovery?

Cancel

OK

If you want to retry the recovery after resetting the procedure, you must restore the appliance node to a pre-installed state by running `sgareinstall` on the node.

## Remounting and reformatting appliance storage volumes (“Manual Steps”)

You must manually run two scripts to remount preserved storage volumes and reformat any failed storage volumes. The first script remounts volumes that are properly formatted as StorageGRID storage volumes. The second script reformats any unmounted volumes, rebuilds the Cassandra database, if needed, and starts services.

### What you'll need

- You have already replaced the hardware for any failed storage volumes that you know require replacement.

Running the `sn-remount-volumes` script might help you identify additional failed storage volumes.

- You have checked that a Storage Node decommissioning is not in progress, or you have paused the node decommission procedure. (In the Grid Manager, select **Maintenance** > **Maintenance Tasks** > **Decommission**.)
- You have checked that an expansion is not in progress. (In the Grid Manager, select **Maintenance** > **Maintenance Tasks** > **Expansion**.)



Contact technical support if more than one Storage Node is offline or if a Storage Node in this grid has been rebuilt in the last 15 days. Do not run the `sn-recovery-postinstall.sh` script. Rebuilding Cassandra on two or more Storage Nodes within 15 days of each other might result in data loss.

### About this task

To complete this procedure, you perform these high-level tasks:

- Log in to the recovered Storage Node.
- Run the `sn-remount-volumes` script to remount properly formatted storage volumes. When this script runs, it does the following:

- Mounts and unmounts each storage volume to replay the XFS journal.
- Performs an XFS file consistency check.
- If the file system is consistent, determines if the storage volume is a properly formatted StorageGRID storage volume.
- If the storage volume is properly formatted, remounts the storage volume. Any existing data on the volume remains intact.
- Review the script output and resolve any issues.
- Run the `sn-recovery-postinstall.sh` script. When this script runs, it does the following.



Do not reboot a Storage Node during recovery before running `sn-recovery-postinstall.sh` (step 4) to reformat the failed storage volumes and restore object metadata. Rebooting the Storage Node before `sn-recovery-postinstall.sh` completes causes errors for services that attempt to start and causes StorageGRID appliance nodes to exit maintenance mode.

- Reformats any storage volumes that the `sn-remount-volumes` script could not mount or that were found to be improperly formatted.



If a storage volume is reformatted, any data on that volume is lost. You must perform an additional procedure to restore object data from other locations in the grid, assuming that ILM rules were configured to store more than one object copy.

- Rebuilds the Cassandra database on the node, if needed.
- Starts the services on the Storage Node.

## Steps

### 1. Log in to the recovered Storage Node:

- Enter the following command: `ssh admin@grid_node_IP`
- Enter the password listed in the `Passwords.txt` file.
- Enter the following command to switch to root: `su -`
- Enter the password listed in the `Passwords.txt` file.

When you are logged in as root, the prompt changes from `$` to `#`.

### 2. Run the first script to remount any properly formatted storage volumes.



If all storage volumes are new and need to be formatted, or if all storage volumes have failed, you can skip this step and run the second script to reformat all unmounted storage volumes.

- Run the script: `sn-remount-volumes`

This script might take hours to run on storage volumes that contain data.

- As the script runs, review the output and answer any prompts.



As required, you can use the `tail -f` command to monitor the contents of the script's log file (`/var/local/log/sn-remount-volumes.log`). The log file contains more detailed information than the command line output.

```
root@SG:~ # sn-remount-volumes
The configured LDR noid is 12632740

===== Device /dev/sdb =====
Mount and unmount device /dev/sdb and checking file system
consistency:
The device is consistent.
Check rangedb structure on device /dev/sdb:
Mount device /dev/sdb to /tmp/sdb-654321 with rangedb mount options
This device has all rangedb directories.
Found LDR node id 12632740, volume number 0 in the volID file
Attempting to remount /dev/sdb
Device /dev/sdb remounted successfully

===== Device /dev/sdc =====
Mount and unmount device /dev/sdc and checking file system
consistency:
Error: File system consistency check retry failed on device /dev/sdc.
You can see the diagnosis information in the /var/local/log/sn-
remount-volumes.log.

This volume could be new or damaged. If you run sn-recovery-
postinstall.sh, this volume and any data on this volume will be
deleted. If you only had two copies of object data, you will
temporarily have only a single copy.
StorageGRID Webscale will attempt to restore data redundancy by
making additional replicated copies or EC fragments, according to the
rules in the active ILM policy.

Do not continue to the next step if you believe that the data
remaining on this volume cannot be rebuilt from elsewhere in the grid
(for example, if your ILM policy uses a rule that makes only one copy
or if volumes have failed on multiple nodes). Instead, contact
support to determine how to recover your data.

===== Device /dev/sdd =====
Mount and unmount device /dev/sdd and checking file system
consistency:
Failed to mount device /dev/sdd
This device could be an uninitialized disk or has corrupted
superblock.
File system check might take a long time. Do you want to continue? (y
```



```
or n) [y/N]? y
```

```
Error: File system consistency check retry failed on device /dev/sdd.  
You can see the diagnosis information in the /var/local/log/sn-  
remount-volumes.log.
```

```
This volume could be new or damaged. If you run sn-recovery-  
postinstall.sh, this volume and any data on this volume will be  
deleted. If you only had two copies of object data, you will  
temporarily have only a single copy.
```

```
StorageGRID Webscale will attempt to restore data redundancy by  
making additional replicated copies or EC fragments, according to the  
rules in the active ILM policy.
```

```
Do not continue to the next step if you believe that the data  
remaining on this volume cannot be rebuilt from elsewhere in the grid  
(for example, if your ILM policy uses a rule that makes only one copy  
or if volumes have failed on multiple nodes). Instead, contact  
support to determine how to recover your data.
```

```
===== Device /dev/sde =====
```

```
Mount and unmount device /dev/sde and checking file system  
consistency:
```

```
The device is consistent.
```

```
Check rangedb structure on device /dev/sde:
```

```
Mount device /dev/sde to /tmp/sde-654321 with rangedb mount options
```

```
This device has all rangedb directories.
```

```
Found LDR node id 12000078, volume number 9 in the volID file
```

```
Error: This volume does not belong to this node. Fix the attached  
volume and re-run this script.
```

In the example output, one storage volume was remounted successfully and three storage volumes had errors.

- /dev/sdb passed the XFS file system consistency check and had a valid volume structure, so it was remounted successfully. Data on devices that are remounted by the script is preserved.
- /dev/sdc failed the XFS file system consistency check because the storage volume was new or corrupt.
- /dev/sdd could not be mounted because the disk was uninitialized or the disk's superblock was corrupted. When the script cannot mount a storage volume, it asks if you want to run the file system consistency check.
  - If the storage volume is attached to a new disk, answer **N** to the prompt. You do not need check the file system on a new disk.
  - If the storage volume is attached to an existing disk, answer **Y** to the prompt. You can use the results of the file system check to determine the source of the corruption. The results are saved in the /var/local/log/sn-remount-volumes.log log file.

- `/dev/sde` passed the XFS file system consistency check and had a valid volume structure; however, the LDR node ID in the `volID` file did not match the ID for this Storage Node (the configured LDR noid displayed at the top). This message indicates that this volume belongs to another Storage Node.

### 3. Review the script output and resolve any issues.



If a storage volume failed the XFS file system consistency check or could not be mounted, carefully review the error messages in the output. You must understand the implications of running the `sn-recovery-postinstall.sh` script on these volumes.

- a. Check to make sure that the results include an entry for all of the volumes you expected. If any volumes are not listed, rerun the script.
- b. Review the messages for all mounted devices. Make sure there are no errors indicating that a storage volume does not belong to this Storage Node.

In the example, the output for `/dev/sde` includes the following error message:

```
Error: This volume does not belong to this node. Fix the attached
volume and re-run this script.
```



If a storage volume is reported as belonging to another Storage Node, contact technical support. If you run the `sn-recovery-postinstall.sh` script, the storage volume will be reformatted, which might cause data loss.

- c. If any storage devices could not be mounted, make a note of the device name, and repair or replace the device.



You must repair or replace any storage devices that could not be mounted.

You will use the device name to look up the volume ID, which is required input when you run the `repair-data` script to restore object data to the volume (the next procedure).

- d. After repairing or replacing all unmountable devices, run the `sn-remount-volumes` script again to confirm that all storage volumes that can be remounted have been remounted.



If a storage volume cannot be mounted or is improperly formatted, and you continue to the next step, the volume and any data on the volume will be deleted. If you had two copies of object data, you will have only a single copy until you complete the next procedure (restoring object data).



Do not run the `sn-recovery-postinstall.sh` script if you believe that the data remaining on a failed storage volume cannot be rebuilt from elsewhere in the grid (for example, if your ILM policy uses a rule that makes only one copy or if volumes have failed on multiple nodes). Instead, contact technical support to determine how to recover your data.

### 4. Run the `sn-recovery-postinstall.sh` script: `sn-recovery-postinstall.sh`

This script reformats any storage volumes that could not be mounted or that were found to be improperly formatted; rebuilds the Cassandra database on the node, if needed; and starts the services on the Storage Node.

Be aware of the following:

- The script might take hours to run.
- In general, you should leave the SSH session alone while the script is running.
- Do not press **Ctrl+C** while the SSH session is active.
- The script will run in the background if a network disruption occurs and terminates the SSH session, but you can view the progress from the Recovery page.
- If the Storage Node uses the RSM service, the script might appear to stall for 5 minutes as node services are restarted. This 5-minute delay is expected whenever the RSM service boots for the first time.



The RSM service is present on Storage Nodes that include the ADC service.



Some StorageGRID recovery procedures use Reaper to handle Cassandra repairs. Repairs occur automatically as soon as the related or required services have started. You might notice script output that mentions “reaper” or “Cassandra repair.” If you see an error message indicating the repair has failed, run the command indicated in the error message.

5. As the `sn-recovery-postinstall.sh` script runs, monitor the Recovery page in the Grid Manager.

The Progress bar and the Stage column on the Recovery page provide a high-level status of the `sn-recovery-postinstall.sh` script.

#### Recovery

Select the failed grid node to recover, enter your provisioning passphrase, and then click Start Recovery to begin the recovery procedure.

##### Pending Nodes

<div>Search </div>				
Name	IPv4 Address	State	Recoverable	
No results found.				

##### Recovering Grid Node

Name	Start Time	Progress	Stage
DC1-S3	2016-06-02 14:03:35 PDT	<div><div></div></div>	Recovering Cassandra

6. Return to the Monitor Install page of the StorageGRID Appliance Installer by entering `http://Controller_IP:8080`, using the IP address of the compute controller.

The Monitor Install page shows the installation progress while the script is running.

After the `sn-recovery-postinstall.sh` script has started services on the node, you can restore object data to any storage volumes that were formatted by the script, as described in the next procedure.

## Related information


[Reviewing warnings for Storage Node system drive recovery](#)

[Restoring object data to a storage volume for an appliance](#)

## Restoring object data to a storage volume for an appliance

After recovering storage volumes for the appliance Storage Node, you can restore the object data that was lost when the Storage Node failed.

### What you'll need

- You must have confirmed that the recovered Storage Node has a Connection State of **Connected\***  on the **\*Nodes > Overview** tab in the Grid Manager.

### About this task

Object data can be restored from other Storage Nodes, an Archive Node, or a Cloud Storage Pool, assuming that the grid's ILM rules were configured such that object copies are available.



If an ILM rule was configured to store only one replicated copy and that copy existed on a storage volume that failed, you will not be able to recover the object.



If the only remaining copy of an object is in a Cloud Storage Pool, StorageGRID must issue multiple requests to the Cloud Storage Pool endpoint to restore object data. Before performing this procedure, contact technical support for help in estimating the recovery time frame and the associated costs.



If the only remaining copy of an object is on an Archive Node, object data is retrieved from the Archive Node. Due to the latency associated with retrievals from external archival storage systems, restoring object data to a Storage Node from an Archive Node takes longer than restoring copies from other Storage Nodes.

To restore object data, you run the `repair-data` script. This script begins the process of restoring object data and works with ILM scanning to ensure that ILM rules are met. You use different options with the `repair-data` script, based on whether you are restoring replicated data or erasure coded data, as follows:

- **Replicated data:** Two commands are available for restoring replicated data, based on whether you need to repair the entire node or only certain volumes on the node:

```
repair-data start-replicated-node-repair
```

```
repair-data start-replicated-volume-repair
```

- **Erasure coded (EC) data:** Two commands are available for restoring erasure coded data, based on whether you need to repair the entire node or only certain volumes on the node:

```
repair-data start-ec-node-repair
```

```
repair-data start-ec-volume-repair
```

Repairs of erasure coded data can begin while some Storage Nodes are offline. Repair will complete after all nodes are available. You can track repairs of erasure coded data with this command:

```
repair-data show-ec-repair-status
```



The EC repair job temporarily reserves a large amount of storage. Storage alerts might be triggered, but will resolve when the repair is complete. If there is not enough storage for the reservation, the EC repair job will fail. Storage reservations are released when the EC repair job completes, whether the job failed or succeeded.

For more information on using the `repair-data` script, enter `repair-data --help` from the command line of the primary Admin Node.

### Steps

1. Log in to the primary Admin Node:
  - a. Enter the following command: `ssh admin@primary_Admin_Node_IP`
  - b. Enter the password listed in the `Passwords.txt` file.
  - c. Enter the following command to switch to root: `su -`
  - d. Enter the password listed in the `Passwords.txt` file.

When you are logged in as root, the prompt changes from `$` to `#`.

2. Use the `/etc/hosts` file to find the hostname of the Storage Node for the restored storage volumes. To see a list of all nodes in the grid, enter the following: `cat /etc/hosts`
3. If all storage volumes have failed, repair the entire node. (If only some volumes have failed, go to the next step.)



You cannot run `repair-data` operations for more than one node at the same time. To recover multiple nodes, contact technical support.

- If your grid includes replicated data, use the `repair-data start-replicated-node-repair` command with the `--nodes` option to repair the entire Storage Node.

This command repairs the replicated data on a Storage Node named SG-DC-SN3:

```
repair-data start-replicated-node-repair --nodes SG-DC-SN3
```



As object data is restored, the **Objects Lost** alert is triggered if the StorageGRID system cannot locate replicated object data. Alerts might be triggered on Storage Nodes throughout the system. You should determine the cause of the loss and if recovery is possible. See the instructions for monitoring and troubleshooting StorageGRID.

- If your grid contains erasure coded data, use the `repair-data start-ec-node-repair` command with the `--nodes` option to repair the entire Storage Node.

This command repairs the erasure coded data on a Storage Node named SG-DC-SN3:

```
repair-data start-ec-node-repair --nodes SG-DC-SN3
```

The operation returns a unique `repair ID` that identifies this `repair_data` operation. Use this `repair ID` to track the progress and result of the `repair_data` operation. No other feedback is returned as the recovery process completes.



Repairs of erasure coded data can begin while some Storage Nodes are offline. Repair will complete after all nodes are available.

- If your grid has both replicated and erasure coded data, run both commands.

4. If only some of the volumes have failed, repair the affected volumes.

Enter the volume IDs in hexadecimal. For example, 0000 is the first volume and 000F is the sixteenth volume. You can specify one volume, a range of volumes, or multiple volumes that are not in a sequence.

All the volumes must be on the same Storage Node. If you need to restore volumes for more than one Storage Node, contact technical support.

- If your grid contains replicated data, use the `start-replicated-volume-repair` command with the `--nodes` option to identify the node. Then add either the `--volumes` or `--volume-range` option, as shown in the following examples.

**Single volume:** This command restores replicated data to volume 0002 on a Storage Node named SG-DC-SN3:

```
repair-data start-replicated-volume-repair --nodes SG-DC-SN3  
--volumes 0002
```

**Range of volumes:** This command restores replicated data to all volumes in the range 0003 to 0009 on a Storage Node named SG-DC-SN3:

```
repair-data start-replicated-volume-repair --nodes SG-DC-SN3 --volume  
-range 0003-0009
```

**Multiple volumes not in a sequence:** This command restores replicated data to volumes 0001, 0005, and 0008 on a Storage Node named SG-DC-SN3:

```
repair-data start-replicated-volume-repair --nodes SG-DC-SN3  
--volumes 0001,0005,0008
```



As object data is restored, the **Objects Lost** alert is triggered if the StorageGRID system cannot locate replicated object data. Alerts might be triggered on Storage Nodes throughout the system. You should determine the cause of the loss and if recovery is possible. See the instructions for monitoring and troubleshooting StorageGRID.

- If your grid contains erasure coded data, use the `start-ec-volume-repair` command with the `--nodes` option to identify the node. Then add either the `--volumes` or `--volume-range` option, as shown in the following examples.

**Single volume:** This command restores erasure coded data to volume 0007 on a Storage Node named SG-DC-SN3:

```
repair-data start-ec-volume-repair --nodes SG-DC-SN3 --volumes 0007
```

**Range of volumes:** This command restores erasure coded data to all volumes in the range 0004 to 0006 on a Storage Node named SG-DC-SN3:

```
repair-data start-ec-volume-repair --nodes SG-DC-SN3 --volume-range 0004-0006
```

**Multiple volumes not in a sequence:** This command restores erasure coded data to volumes 000A, 000C, and 000E on a Storage Node named SG-DC-SN3:

```
repair-data start-ec-volume-repair --nodes SG-DC-SN3 --volumes 000A,000C,000E
```

The `repair-data` operation returns a unique `repair ID` that identifies this `repair_data` operation. Use this `repair ID` to track the progress and result of the `repair_data` operation. No other feedback is returned as the recovery process completes.



Repairs of erasure coded data can begin while some Storage Nodes are offline. Repair will complete after all nodes are available.

- If your grid has both replicated and erasure coded data, run both commands.

## 5. Monitor the repair of replicated data.

- Select **Nodes > Storage Node being repaired > ILM**.
- Use the attributes in the Evaluation section to determine if repairs are complete.

When repairs are complete, the Awaiting - All attribute indicates 0 objects.

- To monitor the repair in more detail, select **Support > Tools > Grid Topology**.
- Select **grid > Storage Node being repaired > LDR > Data Store**.
- Use a combination of the following attributes to determine, as well as possible, if replicated repairs are complete.



Cassandra inconsistencies might be present, and failed repairs are not tracked.

- **Repairs Attempted (XRPA):** Use this attribute to track the progress of replicated repairs. This attribute increases each time a Storage Node tries to repair a high-risk object. When this attribute does not increase for a period longer than the current scan period (provided by the **Scan Period — Estimated** attribute), it means that ILM scanning found no high-risk objects that need to be repaired on any nodes.



High-risk objects are objects that are at risk of being completely lost. This does not include objects that do not satisfy their ILM configuration.

- **Scan Period — Estimated (XSCM):** Use this attribute to estimate when a policy change will be applied to previously ingested objects. If the **Repairs Attempted** attribute does not increase for a period longer than the current scan period, it is probable that replicated repairs are done. Note that the scan period can change. The **Scan Period — Estimated (XSCM)** attribute applies to the entire grid and is the maximum of all node scan periods. You can query the **Scan Period — Estimated** attribute history for the grid to determine an appropriate time frame.

6. Monitor the repair of erasure coded data, and retry any requests that might have failed.

a. Determine the status of erasure coded data repairs:

- Use this command to see the status of a specific `repair-data` operation:

```
repair-data show-ec-repair-status --repair-id repair ID
```

- Use this command to list all repairs:

```
repair-data show-ec-repair-status
```

The output lists information, including `repair ID`, for all previously and currently running repairs.

```
root@DC1-ADM1:~ # repair-data show-ec-repair-status

Repair ID Scope Start Time End Time State Est Bytes
Affected/Repaired Retry Repair
=====
=====
 949283 DC1-S-99-10 (Volumes: 1,2) 2016-11-30T15:27:06.9 Success
17359 17359 No
 949292 DC1-S-99-10 (Volumes: 1,2) 2016-11-30T15:37:06.9 Failure
17359 0 Yes
 949294 DC1-S-99-10 (Volumes: 1,2) 2016-11-30T15:47:06.9 Failure
17359 0 Yes
 949299 DC1-S-99-10 (Volumes: 1,2) 2016-11-30T15:57:06.9 Failure
17359 0 Yes
```



- b. If the output shows that the repair operation failed, use the `--repair-id` option to retry the repair.

This command retries a failed node repair, using the repair ID 83930030303133434:

```
repair-data start-ec-node-repair --repair-id 83930030303133434
```

This command retries a failed volume repair, using the repair ID 83930030303133434:

```
repair-data start-ec-volume-repair --repair-id 83930030303133434
```

#### Related information

[Monitor & troubleshoot](#)

## Checking the storage state after recovering an appliance Storage Node

After recovering an appliance Storage Node, you must verify that the desired state of the appliance Storage Node is set to online and ensure that the state will be online by default whenever the Storage Node server is restarted.

#### What you'll need

- You must be signed in to the Grid Manager using a supported browser.
- The Storage Node has been recovered, and data recovery is complete.

#### Steps

1. Select **Support > Tools > Grid Topology**.
2. Check the values of **Recovered Storage Node > LDR > Storage > Storage State — Desired** and **Storage State — Current**.

The value of both attributes should be Online.

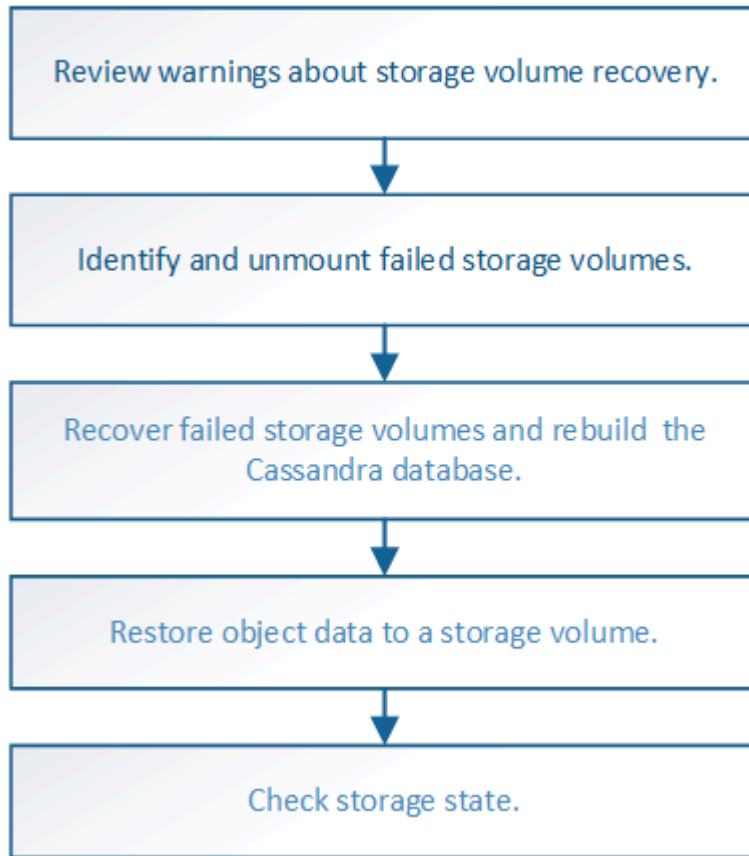
3. If the Storage State — Desired is set to Read-only, complete the following steps:
  - a. Click the **Configuration** tab.
  - b. From the **Storage State — Desired** drop-down list, select **Online**.
  - c. Click **Apply Changes**.
  - d. Click the **Overview** tab and confirm that the values of **Storage State — Desired** and **Storage State — Current** are updated to Online.

## Recovering from storage volume failure where the system drive is intact

You must complete a series of tasks to recover a software-based Storage Node where one or more storage volumes on the Storage Node have failed, but the system drive is intact. If only storage volumes have failed, the Storage Node is still available to the StorageGRID system.

### About this task

This recovery procedure applies to software-based Storage Nodes only. If storage volumes have failed on an appliance Storage Node, use the procedure for “Recovering a StorageGRID appliance Storage Node.”



### Related information

[Recovering a StorageGRID appliance Storage Node](#)

### Steps

- [Reviewing warnings about storage volume recovery](#)
- [Identifying and unmounting failed storage volumes](#)
- [Recovering failed storage volumes and rebuilding the Cassandra database](#)
- [Restoring object data to a storage volume where the system drive is intact](#)
- [Checking the storage state after recovering storage volumes](#)

## Reviewing warnings about storage volume recovery

Before recovering failed storage volumes for a Storage Node, you must review the following warnings.

The storage volumes (or rangedbs) in a Storage Node are identified by a hexadecimal number, which is known as the volume ID. For example, 0000 is the first volume and 000F is the sixteenth volume. The first object store (volume 0) on each Storage Node uses up to 4 TB of space for object metadata and Cassandra database operations; any remaining space on that volume is used for object data. All other storage volumes are used exclusively for object data.

If volume 0 fails and needs to be recovered, the Cassandra database might be rebuilt as part of the volume

recovery procedure. Cassandra might also be rebuilt in the following circumstances:

- A Storage Node is brought back online after having been offline for more than 15 days.
- The system drive and one or more storage volumes fails and is recovered.

When Cassandra is rebuilt, the system uses information from other Storage Nodes. If too many Storage Nodes are offline, some Cassandra data might not be available. If Cassandra has been rebuilt recently, Cassandra data might not yet be consistent across the grid. Data loss can occur if Cassandra is rebuilt when too many Storage Nodes are offline or if two or more Storage Nodes are rebuilt within 15 days of each other.



If more than one Storage Node has failed (or is offline), contact technical support. Do not perform the following recovery procedure. Data loss could occur.



If this is the second Storage Node failure in less than 15 days after a Storage Node failure or recovery, contact technical support. Rebuilding Cassandra on two or more Storage Nodes within 15 days can result in data loss.



If more than one Storage Node at a site has failed, a site recovery procedure might be required. Contact technical support.

#### How site recovery is performed by technical support



If ILM rules are configured to store only one replicated copy and the copy exists on a storage volume that has failed, you will not be able to recover the object.



If you encounter a Services: Status - Cassandra (SVST) alarm during recovery, see the monitoring and troubleshooting instructions to recover from the alarm by rebuilding Cassandra. After Cassandra is rebuilt, alarms should clear. If alarms do not clear, contact technical support.

#### Related information

[Monitor & troubleshoot](#)

[Warnings and considerations for grid node recovery](#)

## Identifying and unmounting failed storage volumes

When recovering a Storage Node with failed storage volumes, you must identify and unmount the failed volumes. You must verify that only the failed storage volumes are reformatted as part of the recovery procedure.

#### What you'll need

You must be signed in to the Grid Manager using a supported browser.

#### About this task

You should recover failed storage volumes as soon as possible.

The first step of the recovery process is to detect volumes that have become detached, need to be unmounted, or have I/O errors. If failed volumes are still attached but have a randomly corrupted file system, the system might not detect any corruption in unused or unallocated parts of the disk.



You must finish this procedure before performing manual steps to recover the volumes, such as adding or re-attaching the disks, stopping the node, starting the node, or rebooting. Otherwise, when you run the `reformat_storage_block_devices.rb` script, you might encounter a file system error that causes the script to hang or fail.



Repair the hardware and properly attach the disks before running the `reboot` command.



Identify failed storage volumes carefully. You will use this information to verify which volumes must be reformatted. Once a volume has been reformatted, data on the volume cannot be recovered.

To correctly recover failed storage volumes, you need to know both the device names of the failed storage volumes and their volume IDs.

At installation, each storage device is assigned a file system universal unique identifier (UUID) and is mounted to a rangedb directory on the Storage Node using that assigned file system UUID. The file system UUID and the rangedb directory are listed in the `/etc/fstab` file. The device name, rangedb directory, and the size of the mounted volume are displayed in the Grid Manager.

In the following example, device `/dev/sdc` has a volume size of 4 TB, is mounted to `/var/local/rangedb/0`, using the device name `/dev/disk/by-uuid/822b0547-3b2b-472e-ad5e-e1cf1809faba` in the `/etc/fstab` file:

The diagram illustrates the relationship between storage devices, the `/etc/fstab` file, and the Grid Manager's Volumes table. On the left, a tree view shows the directory structure: `/var` → `local` → `rangedb`, with subdirectories `0`, `1`, and `2`. In the center, three storage devices are shown: `/dev/sdc` (4396 GB), `/dev/sdd` (4396 GB), and `/dev/sde` (4396 GB). Arrows point from these devices to the `/etc/fstab` file and the Volumes table.

**/etc/fstab file**

```

/dev/sdc      ext3      errors=remount-ro,barri
/dev/sdd      ext3      errors=remount-ro,barri
/dev/sde      swap      defaults                0
proc          /proc     proc                    0
sysfs         /sys      sysfs                   0
debugfs       /sys/kernel/debug debugfs                 noauto 0
devpts        /dev/pts  devpts                  node=0620,gid=5        0
/dev/td0      /media/floppy auto                    noauto,user,sync       0
/dev/cdrom    /cdrom    iso9660 ro,noauto 0 0
/dev/disk/by-uuid/384c4687-8511-47e7-9700-7b31b495a0b8 /var/local/mysql_ibda
/dev/mapper/fsgvg-fsglv /fsg xfs daepi,mtpt=/fsg,noalign,nobarrier,ikkeep 0 2
/dev/disk/by-uuid/822b0547-3b2b-472e-ad5e-e1cf1809faba /var/local/rangedb/0

```

**Volumes**

Mount Point	Device	Status	Size	Space Available	Total Entries	Entries Available	Write Cache
/	croot	Online	10.4 GB	4.53 GB	655,360	559,513	Unknown
/var/local	cyloc	Online	96.6 GB	92.8 GB	94,369,792	94,369,445	Unknown
/var/local/rangedb/0	sdc	Online	4,396 GB	4,379 GB	858,993,408	858,983,455	Unavailable
/var/local/rangedb/1	sdd	Online	4,396 GB	4,362 GB	858,993,408	858,973,530	Unavailable
/var/local/rangedb/2	sde	Online	4,396 GB	4,370 GB	858,993,408	858,982,305	Unavailable

## Steps

1. Complete the following steps to record the failed storage volumes and their device names:
  - a. Select **Support > Tools > Grid Topology**.
  - b. Select **site > failed Storage Node > LDR > Storage > Overview > Main**, and look for object stores with alarms.

## Object Stores

ID	Total	Available	Stored Data	Stored (%)	Health	
0000	96.6 GB	96.6 GB	823 KB	0.001 %	Error	
0001	107 GB	107 GB	0 B	0 %	No Errors	
0002	107 GB	107 GB	0 B	0 %	No Errors	

- c. Select **site > failed Storage Node > SSM > Resources > Overview > Main**. Determine the mount point and volume size of each failed storage volume identified in the previous step.

Object stores are numbered in hex notation. For example, 0000 is the first volume and 000F is the sixteenth volume. In the example, the object store with an ID of 0000 corresponds to `/var/local/rangedb/0` with device name `sdc` and a size of 107 GB.

## Volumes

Mount Point	Device	Status	Size	Space Available	Total Entries	Entries Available	Write Cache
/	croot	Online	10.4 GB	4.17 GB	655,360	554,806	Unknown
/var/local	cvloc	Online	96.6 GB	96.1 GB	94,369,792	94,369,423	Unknown
/var/local/rangedb/0	sdc	Online	107 GB	107 GB	104,857,600	104,856,202	Enabled
/var/local/rangedb/1	sdd	Online	107 GB	107 GB	104,857,600	104,856,536	Enabled
/var/local/rangedb/2	sde	Online	107 GB	107 GB	104,857,600	104,856,536	Enabled

2. Log in to the failed Storage Node:

- a. Enter the following command: `ssh admin@grid_node_IP`
- b. Enter the password listed in the `Passwords.txt` file.
- c. Enter the following command to switch to root: `su -`
- d. Enter the password listed in the `Passwords.txt` file.

When you are logged in as root, the prompt changes from `$` to `#`.

3. Run the following script to stop the storage services and unmount a failed storage volume:

```
sn-unmount-volume object_store_ID
```

The `object_store_ID` is the ID of the failed storage volume. For example, specify 0 in the command for an object store with ID 0000.

4. If prompted, press **y** to stop the storage services on the Storage Node.



If the storage services are already stopped, you are not prompted. The Cassandra service is stopped only for volume 0.

```
root@Storage-180:~ # sn-unmount-volume 0
Storage services (ldr, chunk, dds, cassandra) are not down.
Storage services must be stopped before running this script.
Stop storage services [y/N]? y
Shutting down storage services.
Storage services stopped.
Unmounting /var/local/rangedb/0
/var/local/rangedb/0 is unmounted.
```

In a few seconds, the storage services are stopped and the volume is unmounted. Messages appear indicating each step of the process. The final message indicates that the volume is unmounted.

## Recovering failed storage volumes and rebuilding the Cassandra database

You must run a script that reformats and remounts storage on failed storage volumes, and rebuilds the Cassandra database on the Storage Node if the system determines that it is necessary.

- You must have the `Passwords.txt` file.
- The system drives on the server must be intact.
- The cause of the failure must have been identified and, if necessary, replacement storage hardware must already have been acquired.
- The total size of the replacement storage must be the same as the original.
- You have checked that a Storage Node decommissioning is not in progress, or you have paused the node decommissioning procedure. (In the Grid Manager, select **Maintenance > Maintenance Tasks > Decommission.**)
- You have checked that an expansion is not in progress. (In the Grid Manager, select **Maintenance > Maintenance Tasks > Expansion.**)
- You have reviewed the warnings about storage volume recovery.

### Reviewing warnings about storage volume recovery

1. As needed, replace failed physical or virtual storage associated with the failed storage volumes that you identified and unmounted earlier.

After you replace the storage, make sure you rescan or reboot to make sure that it is recognized by the operating system, but do not remount the volumes. The storage is remounted and added to `/etc/fstab` in a later step.

2. Log in to the failed Storage Node:
  - a. Enter the following command: `ssh admin@grid_node_IP`
  - b. Enter the password listed in the `Passwords.txt` file.
  - c. Enter the following command to switch to root: `su -`

d. Enter the password listed in the `Passwords.txt` file.

When you are logged in as root, the prompt changes from `$` to `#`.

1. Use a text editor (vi or vim) to delete failed volumes from the `/etc/fstab` file and then save the file.



Commenting out a failed volume in the `/etc/fstab` file is insufficient. The volume must be deleted from `fstab` as the recovery process verifies that all lines in the `fstab` file match the mounted file systems.

2. Reformat any failed storage volumes and rebuild the Cassandra database if it is necessary. Enter:

`reformat_storage_block_devices.rb`

- If storage services are running, you will be prompted to stop them. Enter: **y**
- You will be prompted to rebuild the Cassandra database if it is necessary.
  - Review the warnings. If none of them apply, rebuild the Cassandra database. Enter: **y**
  - If more than one Storage Node is offline or if another Storage Node has been rebuilt in the last 15 days. Enter: **n**

The script will exit without rebuilding Cassandra. Contact technical support.

- For each rangedb drive on the Storage Node, when you are asked: `Reformat the rangedb drive <name> (device <major number>:<minor number>)? [y/n]?`, enter one of the following responses:
  - **y** to reformat a drive that had errors. This reformats the storage volume and adds the reformatted storage volume to the `/etc/fstab` file.
  - **n** if the drive contains no errors, and you do not want to reformat it.



Selecting **n** exits the script. Either mount the drive (if you think the data on the drive should be retained and the drive was unmounted in error) or remove the drive. Then, run the `reformat_storage_block_devices.rb` command again.



Some StorageGRID recovery procedures use Reaper to handle Cassandra repairs. Repairs occur automatically as soon as the related or required services have started. You might notice script output that mentions “reaper” or “Cassandra repair.” If you see an error message indicating the repair has failed, run the command indicated in the error message.

In the following example output, the drive `/dev/sdf` must be reformatted, and Cassandra did not need to be rebuilt:



```

root@DC1-S1:~ # reformat_storage_block_devices.rb
Storage services must be stopped before running this script.
Stop storage services [y/N]? **y**
Shutting down storage services.
Storage services stopped.
Formatting devices that are not in use...
Skipping in use device /dev/sdc
Skipping in use device /dev/sdd
Skipping in use device /dev/sde
Reformat the rangedb drive /dev/sdf (device 8:64)? [Y/n]? **y**
Successfully formatted /dev/sdf with UUID c817f87f-f989-4a21-
8f03-b6f42180063f
Skipping in use device /dev/sdg
All devices processed
Running: /usr/local/ldr/setup_rangedb.sh 12075630
Cassandra does not need rebuilding.
Starting services.

Reformatting done. Now do manual steps to
restore copies of data.

```


## Related information

[Reviewing warnings about storage volume recovery](#)

## Restoring object data to a storage volume where the system drive is intact

After recovering a storage volume on a Storage Node where the system drive is intact, you can restore the object data that was lost when the storage volume failed.

### What you'll need

- You must have confirmed that the recovered Storage Node has a Connection State of **Connected\***  on the **\*Nodes > Overview** tab in the Grid Manager.

### About this task

Object data can be restored from other Storage Nodes, an Archive Node, or a Cloud Storage Pool, assuming that the grid's ILM rules were configured such that object copies are available.



If an ILM rule was configured to store only one replicated copy and that copy existed on a storage volume that failed, you will not be able to recover the object.



If the only remaining copy of an object is in a Cloud Storage Pool, StorageGRID must issue multiple requests to the Cloud Storage Pool endpoint to restore object data. Before performing this procedure, contact technical support for help in estimating the recovery time frame and the associated costs.





If the only remaining copy of an object is on an Archive Node, object data is retrieved from the Archive Node. Due to the latency associated with retrievals from external archival storage systems, restoring object data to a Storage Node from an Archive Node takes longer than restoring copies from other Storage Nodes.

To restore object data, you run the `repair-data` script. This script begins the process of restoring object data and works with ILM scanning to ensure that ILM rules are met. You use different options with the `repair-data` script, based on whether you are restoring replicated data or erasure coded data, as follows:

- **Replicated data:** Two commands are available for restoring replicated data, based on whether you need to repair the entire node or only certain volumes on the node:

```
repair-data start-replicated-node-repair
```

```
repair-data start-replicated-volume-repair
```

- **Erasure coded (EC) data:** Two commands are available for restoring erasure coded data, based on whether you need to repair the entire node or only certain volumes on the node:

```
repair-data start-ec-node-repair
```

```
repair-data start-ec-volume-repair
```

Repairs of erasure coded data can begin while some Storage Nodes are offline. Repair will complete after all nodes are available. You can track repairs of erasure coded data with this command:

```
repair-data show-ec-repair-status
```



The EC repair job temporarily reserves a large amount of storage. Storage alerts might be triggered, but will resolve when the repair is complete. If there is not enough storage for the reservation, the EC repair job will fail. Storage reservations are released when the EC repair job completes, whether the job failed or succeeded.

For more information on using the `repair-data` script, enter `repair-data --help` from the command line of the primary Admin Node.

## Steps

1. Log in to the primary Admin Node:
  - a. Enter the following command: `ssh admin@primary_Admin_Node_IP`
  - b. Enter the password listed in the `Passwords.txt` file.
  - c. Enter the following command to switch to root: `su -`

d. Enter the password listed in the `Passwords.txt` file.

When you are logged in as root, the prompt changes from `$` to `#`.

2. Use the `/etc/hosts` file to find the hostname of the Storage Node for the restored storage volumes. To see a list of all nodes in the grid, enter the following: `cat /etc/hosts`
3. If all storage volumes have failed, repair the entire node. (If only some volumes have failed, go to the next step.)



You cannot run `repair-data` operations for more than one node at the same time. To recover multiple nodes, contact technical support.

- If your grid includes replicated data, use the `repair-data start-replicated-node-repair` command with the `--nodes` option to repair the entire Storage Node.

This command repairs the replicated data on a Storage Node named SG-DC-SN3:

```
repair-data start-replicated-node-repair --nodes SG-DC-SN3
```



As object data is restored, the **Objects Lost** alert is triggered if the StorageGRID system cannot locate replicated object data. Alerts might be triggered on Storage Nodes throughout the system. You should determine the cause of the loss and if recovery is possible. See the instructions for monitoring and troubleshooting StorageGRID.

- If your grid contains erasure coded data, use the `repair-data start-ec-node-repair` command with the `--nodes` option to repair the entire Storage Node.

This command repairs the erasure coded data on a Storage Node named SG-DC-SN3:

```
repair-data start-ec-node-repair --nodes SG-DC-SN3
```

The operation returns a unique `repair ID` that identifies this `repair_data` operation. Use this `repair ID` to track the progress and result of the `repair_data` operation. No other feedback is returned as the recovery process completes.



Repairs of erasure coded data can begin while some Storage Nodes are offline. Repair will complete after all nodes are available.

- If your grid has both replicated and erasure coded data, run both commands.

4. If only some of the volumes have failed, repair the affected volumes.

Enter the volume IDs in hexadecimal. For example, `0000` is the first volume and `000F` is the sixteenth volume. You can specify one volume, a range of volumes, or multiple volumes that are not in a sequence.

All the volumes must be on the same Storage Node. If you need to restore volumes for more than one Storage Node, contact technical support.

- If your grid contains replicated data, use the `start-replicated-volume-repair` command with the `--nodes` option to identify the node. Then add either the `--volumes` or `--volume-range` option, as shown in the following examples.

**Single volume:** This command restores replicated data to volume 0002 on a Storage Node named SG-DC-SN3:

```
repair-data start-replicated-volume-repair --nodes SG-DC-SN3
--volumes 0002
```

**Range of volumes:** This command restores replicated data to all volumes in the range 0003 to 0009 on a Storage Node named SG-DC-SN3:

```
repair-data start-replicated-volume-repair --nodes SG-DC-SN3 --volume
-range 0003-0009
```

**Multiple volumes not in a sequence:** This command restores replicated data to volumes 0001, 0005, and 0008 on a Storage Node named SG-DC-SN3:

```
repair-data start-replicated-volume-repair --nodes SG-DC-SN3
--volumes 0001,0005,0008
```



As object data is restored, the **Objects Lost** alert is triggered if the StorageGRID system cannot locate replicated object data. Alerts might be triggered on Storage Nodes throughout the system. You should determine the cause of the loss and if recovery is possible. See the instructions for monitoring and troubleshooting StorageGRID.

- If your grid contains erasure coded data, use the `start-ec-volume-repair` command with the `--nodes` option to identify the node. Then add either the `--volumes` or `--volume-range` option, as shown in the following examples.

**Single volume:** This command restores erasure coded data to volume 0007 on a Storage Node named SG-DC-SN3:

```
repair-data start-ec-volume-repair --nodes SG-DC-SN3 --volumes 0007
```

**Range of volumes:** This command restores erasure coded data to all volumes in the range 0004 to 0006 on a Storage Node named SG-DC-SN3:

```
repair-data start-ec-volume-repair --nodes SG-DC-SN3 --volume-range
0004-0006
```

**Multiple volumes not in a sequence:** This command restores erasure coded data to volumes 000A,

000C, and 000E on a Storage Node named SG-DC-SN3:

```
repair-data start-ec-volume-repair --nodes SG-DC-SN3 --volumes
000A,000C,000E
```

The `repair-data` operation returns a unique `repair ID` that identifies this `repair_data` operation. Use this `repair ID` to track the progress and result of the `repair_data` operation. No other feedback is returned as the recovery process completes.



Repairs of erasure coded data can begin while some Storage Nodes are offline. Repair will complete after all nodes are available.

- If your grid has both replicated and erasure coded data, run both commands.

5. Monitor the repair of replicated data.

- Select **Nodes > Storage Node being repaired > ILM**.
- Use the attributes in the Evaluation section to determine if repairs are complete.

When repairs are complete, the Awaiting - All attribute indicates 0 objects.

- To monitor the repair in more detail, select **Support > Tools > Grid Topology**.
- Select **grid > Storage Node being repaired > LDR > Data Store**.
- Use a combination of the following attributes to determine, as well as possible, if replicated repairs are complete.



Cassandra inconsistencies might be present, and failed repairs are not tracked.

- **Repairs Attempted (XRPA)**: Use this attribute to track the progress of replicated repairs. This attribute increases each time a Storage Node tries to repair a high-risk object. When this attribute does not increase for a period longer than the current scan period (provided by the **Scan Period — Estimated** attribute), it means that ILM scanning found no high-risk objects that need to be repaired on any nodes.



High-risk objects are objects that are at risk of being completely lost. This does not include objects that do not satisfy their ILM configuration.

- **Scan Period — Estimated (XSCM)**: Use this attribute to estimate when a policy change will be applied to previously ingested objects. If the **Repairs Attempted** attribute does not increase for a period longer than the current scan period, it is probable that replicated repairs are done. Note that the scan period can change. The **Scan Period — Estimated (XSCM)** attribute applies to the entire grid and is the maximum of all node scan periods. You can query the **Scan Period — Estimated** attribute history for the grid to determine an appropriate time frame.

6. Monitor the repair of erasure coded data, and retry any requests that might have failed.

- Determine the status of erasure coded data repairs:
  - Use this command to see the status of a specific `repair-data` operation:

```
repair-data show-ec-repair-status --repair-id repair ID
```

- Use this command to list all repairs:

```
repair-data show-ec-repair-status
```

The output lists information, including `repair ID`, for all previously and currently running repairs.

```
root@DC1-ADM1:~ # repair-data show-ec-repair-status

Repair ID Scope   Start Time   End Time   State   Est Bytes
Affected/Repaired Retry Repair
=====
=====
949283 DC1-S-99-10 (Volumes: 1,2) 2016-11-30T15:27:06.9 Success
17359 17359 No
949292 DC1-S-99-10 (Volumes: 1,2) 2016-11-30T15:37:06.9 Failure
17359 0      Yes
949294 DC1-S-99-10 (Volumes: 1,2) 2016-11-30T15:47:06.9 Failure
17359 0      Yes
949299 DC1-S-99-10 (Volumes: 1,2) 2016-11-30T15:57:06.9 Failure
17359 0      Yes
```

- b. If the output shows that the repair operation failed, use the `--repair-id` option to retry the repair.

This command retries a failed node repair, using the repair ID 83930030303133434:

```
repair-data start-ec-node-repair --repair-id 83930030303133434
```

This command retries a failed volume repair, using the repair ID 83930030303133434:

```
repair-data start-ec-volume-repair --repair-id 83930030303133434
```

## Related information

[Administer StorageGRID](#)

[Monitor & troubleshoot](#)

## Checking the storage state after recovering storage volumes

After recovering storage volumes, you must verify that the desired state of the Storage Node is set to online and ensure that the state will be online by default whenever the

Storage Node server is restarted.

#### What you'll need

- You must be signed in to the Grid Manager using a supported browser.
- The Storage Node has been recovered, and data recovery is complete.

#### Steps

1. Select **Support > Tools > Grid Topology**.
2. Check the values of **Recovered Storage Node > LDR > Storage > Storage State — Desired** and **Storage State — Current**.

The value of both attributes should be Online.

3. If the Storage State — Desired is set to Read-only, complete the following steps:
  - a. Click the **Configuration** tab.
  - b. From the **Storage State — Desired** drop-down list, select **Online**.
  - c. Click **Apply Changes**.
  - d. Click the **Overview** tab and confirm that the values of **Storage State — Desired** and **Storage State — Current** are updated to Online.

## Recovering from system drive failure

If the system drive on a software-based Storage Node has failed, the Storage Node is not available to the StorageGRID system. You must complete a specific set of tasks to recover from a system drive failure.

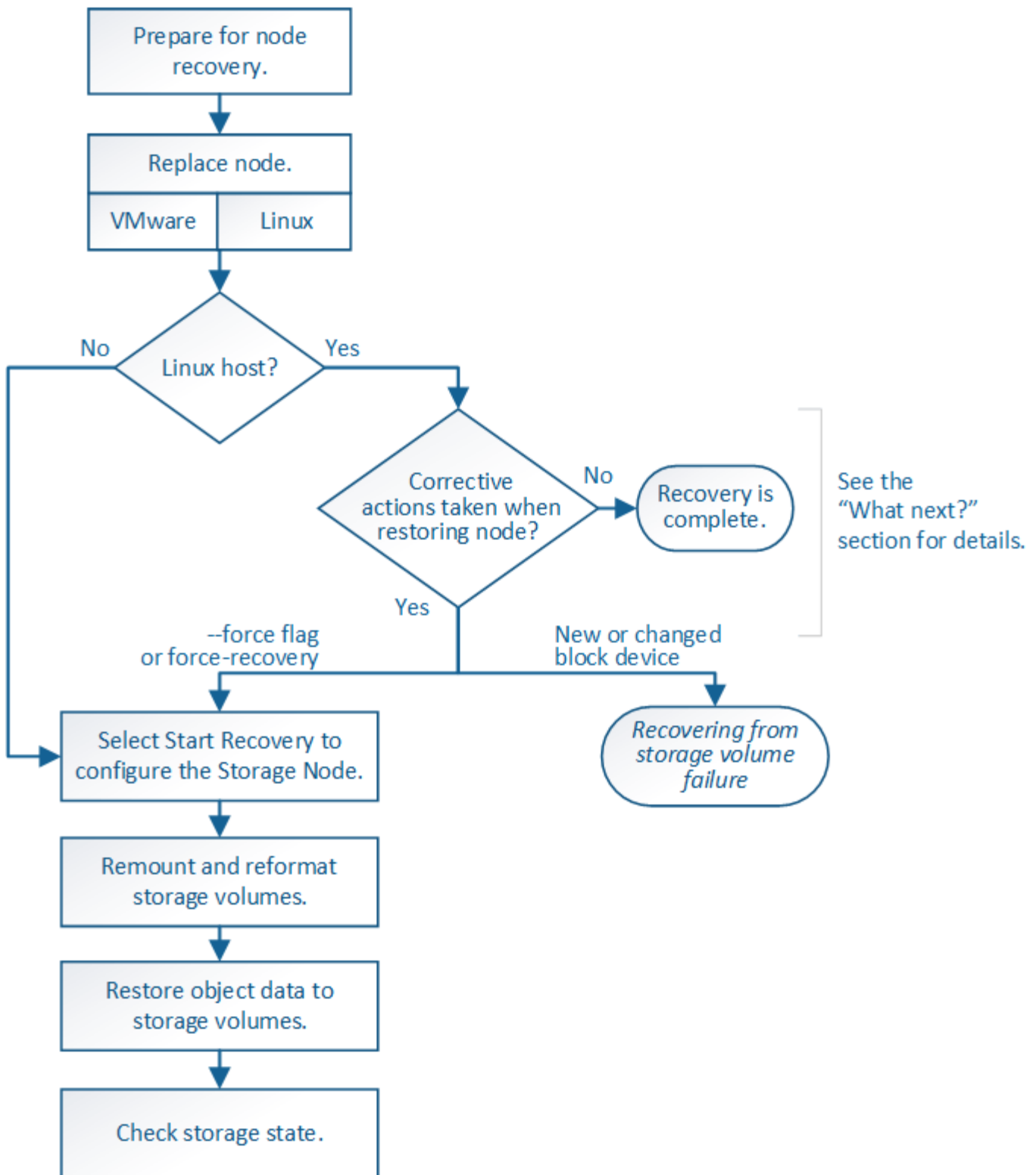
#### About this task

Use this procedure to recover from a system drive failure on a software-based Storage Node. This procedure includes the steps to follow if any storage volumes also failed or cannot be remounted.



This procedure applies to software-based Storage Nodes only. You must follow a different procedure to recover an appliance Storage Node.

[Recovering a StorageGRID appliance Storage Node](#)



### Steps

- Reviewing warnings for Storage Node system drive recovery
- Replacing the Storage Node
- Selecting Start Recovery to configure a Storage Node
- Remounting and reformatting storage volumes ("Manual Steps")
- Restoring object data to a storage volume, if required

- [Checking the storage state after recovering a Storage Node system drive](#)

## Reviewing warnings for Storage Node system drive recovery

Before recovering a failed system drive of a Storage Node, you must review the following warnings.

Storage Nodes have a Cassandra database that includes object metadata. The Cassandra database might be rebuilt in the following circumstances:

- A Storage Node is brought back online after having been offline for more than 15 days.
- A storage volume has failed and been recovered.
- The system drive and one or more storage volumes fails and is recovered.

When Cassandra is rebuilt, the system uses information from other Storage Nodes. If too many Storage Nodes are offline, some Cassandra data might not be available. If Cassandra has been rebuilt recently, Cassandra data might not yet be consistent across the grid. Data loss can occur if Cassandra is rebuilt when too many Storage Nodes are offline or if two or more Storage Nodes are rebuilt within 15 days of each other.



If more than one Storage Node has failed (or is offline), contact technical support. Do not perform the following recovery procedure. Data loss could occur.



If this is the second Storage Node failure in less than 15 days after a Storage Node failure or recovery, contact technical support. Rebuilding Cassandra on two or more Storage Nodes within 15 days can result in data loss.



If more than one Storage Node at a site has failed, a site recovery procedure might be required. Contact technical support.

### [How site recovery is performed by technical support](#)



If this Storage Node is in read-only maintenance mode to allow for the retrieval of objects by another Storage Node with failed storage volumes, recover volumes on the Storage Node with failed storage volumes before recovering this failed Storage Node. See the instructions for recovering from loss of storage volumes where the system drive is intact.



If ILM rules are configured to store only one replicated copy and the copy exists on a storage volume that has failed, you will not be able to recover the object.



If you encounter a Services: Status - Cassandra (SVST) alarm during recovery, see the monitoring and troubleshooting instructions to recover from the alarm by rebuilding Cassandra. After Cassandra is rebuilt, alarms should clear. If alarms do not clear, contact technical support.

### Related information

[Monitor & troubleshoot](#)

[Warnings and considerations for grid node recovery](#)

[Recovering from storage volume failure where the system drive is intact](#)



## Replacing the Storage Node

If the system drive has failed, you must first replace the Storage Node.

You must select the node replacement procedure for your platform. The steps to replace a node are the same for all types of grid nodes.



This procedure applies to software-based Storage Nodes only. You must follow a different procedure to recover an appliance Storage Node.

### Recovering a StorageGRID appliance Storage Node

**Linux:** If you are not sure if your system drive has failed, follow the instructions to replace the node to determine which recovery steps are required.

Platform	Procedure
VMware	<a href="#">Replacing a VMware node</a>
Linux	<a href="#">Replacing a Linux node</a>
OpenStack	NetApp-provided virtual machine disk files and scripts for OpenStack are no longer supported for recovery operations. If you need to recover a node running in an OpenStack deployment, download the files for your Linux operating system. Then, follow the procedure for replacing a Linux node.

## Selecting Start Recovery to configure a Storage Node

After replacing a Storage Node, you must select Start Recovery in the Grid Manager to configure the new node as a replacement for the failed node.

### What you'll need

- You must be signed in to the Grid Manager using a supported browser.
- You must have the Maintenance or Root Access permission.
- You must have the provisioning passphrase.
- You must have deployed and configured the replacement node.
- You must know the start date of any repair jobs for erasure-coded data.
- You must have verified that the Storage Node has not been rebuilt within the last 15 days.

### About this task

If the Storage Node is installed as a container on a Linux host, you must perform this step only if one of these is true:

- You had to use the `--force` flag to import the node, or you issued `storagegrid node force-recovery node-name`
- You had to do a full node reinstall, or you needed to restore `/var/local`.

Steps

- 1. From the Grid Manager, select **Maintenance > Maintenance Tasks > Recovery**.
- 2. Select the grid node you want to recover in the Pending Nodes list.

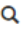


Nodes appear in the list after they fail, but you cannot select a node until it has been reinstalled and is ready for recovery.

- 3. Enter the **Provisioning Passphrase**.
- 4. Click **Start Recovery**.

Recovery

Select the failed grid node to recover, enter your provisioning passphrase, and then click Start Recovery to begin the recovery procedure.

Pending Nodes

					Search 
	Name	IPv4 Address	State	Recoverable	
	104-217-S1	10.96.104.217	Unknown		

Passphrase

Provisioning Passphrase

Start Recovery

- 5. Monitor the progress of the recovery in the Recovering Grid Node table.



While the recovery procedure is running, you can click **Reset** to start a new recovery. An Info dialog box appears, indicating that the node will be left in an indeterminate state if you reset the procedure.

 Info

Reset Recovery

Resetting the recovery procedure leaves the deployed grid node in an indeterminate state. To retry a recovery after resetting the procedure, you must restore the node to a pre-installed state:

- For VMware nodes, delete the deployed VM and then redeploy it.
- For StorageGRID appliance nodes, run "sgareinstall" on the node.
- For Linux nodes, run "storagegrid node force-recovery *node-name*" on the Linux host.

Do you want to reset recovery?

Cancel

OK

If you want to retry the recovery after resetting the procedure, you must restore the node to a pre-installed

state, as follows:

- **VMware:** Delete the deployed virtual grid node. Then, when you are ready to restart the recovery, redeploy the node.
- **Linux:** Restart the node by running this command on the Linux host: `storagegrid node force-recovery node-name`

6. When the Storage Node reaches the stage “Waiting for Manual Steps” stage, go to the next task in the recovery procedure to remount and reformat storage volumes.

#### Recovery

Select the failed grid node to recover, enter your provisioning passphrase, and then click Start Recovery to begin the recovery procedure.

##### Recovering Grid Node

Name	Start Time	Progress	Stage
dc2-s3	2016-09-12 16:12:40 PDT	<div><div></div></div>	Waiting For Manual Steps

Reset

#### Related information

[Preparing an appliance for reinstallation \(platform replacement only\)](#)

### Remounting and reformatting storage volumes (“Manual Steps”)

You must manually run two scripts to remount preserved storage volumes and to reformat any failed storage volumes. The first script remounts volumes that are properly formatted as StorageGRID storage volumes. The second script reformats any unmounted volumes, rebuilds Cassandra, if needed, and starts services.

#### What you’ll need

- You have already replaced the hardware for any failed storage volumes that you know require replacement.

Running the `sn-remount-volumes` script might help you identify additional failed storage volumes.

- You have checked that a Storage Node decommissioning is not in progress, or you have paused the node decommission procedure. (In the Grid Manager, select **Maintenance > Maintenance Tasks > Decommission.**)
- You have checked that an expansion is not in progress. (In the Grid Manager, select **Maintenance > Maintenance Tasks > Expansion.**)
- You have reviewed the warnings for Storage Node system drive recovery.

[Reviewing warnings for Storage Node system drive recovery](#)



Contact technical support if more than one Storage Node is offline or if a Storage Node in this grid has been rebuilt in the last 15 days. Do not run the `sn-recovery-postinstall.sh` script. Rebuilding Cassandra on two or more Storage Nodes within 15 days of each other might result in data loss.

#### About this task

To complete this procedure, you perform these high-level tasks:

- Log in to the recovered Storage Node.
- Run the `sn-remount-volumes` script to remount properly formatted storage volumes. When this script runs, it does the following:
  - Mounts and unmounts each storage volume to replay the XFS journal.
  - Performs an XFS file consistency check.
  - If the file system is consistent, determines if the storage volume is a properly formatted StorageGRID storage volume.
  - If the storage volume is properly formatted, remounts the storage volume. Any existing data on the volume remains intact.
- Review the script output and resolve any issues.
- Run the `sn-recovery-postinstall.sh` script. When this script runs, it does the following.



Do not reboot a Storage Node during recovery before running `sn-recovery-postinstall.sh` (see the step for [post-install script](#)) to reformat the failed storage volumes and restore object metadata. Rebooting the Storage Node before `sn-recovery-postinstall.sh` completes causes errors for services that attempt to start and causes StorageGRID appliance nodes to exit maintenance mode.

- Reformats any storage volumes that the `sn-remount-volumes` script could not mount or that were found to be improperly formatted.



If a storage volume is reformatted, any data on that volume is lost. You must perform an additional procedure to restore object data from other locations in the grid, assuming that ILM rules were configured to store more than one object copy.

- Rebuilds the Cassandra database on the node, if needed.
- Starts the services on the Storage Node.

## Steps

1. Log in to the recovered Storage Node:

- a. Enter the following command: `ssh admin@grid_node_IP`
- b. Enter the password listed in the `Passwords.txt` file.
- c. Enter the following command to switch to root: `su -`
- d. Enter the password listed in the `Passwords.txt` file.

When you are logged in as root, the prompt changes from `$` to `#`.

2. Run the first script to remount any properly formatted storage volumes.



If all storage volumes are new and need to be formatted, or if all storage volumes have failed, you can skip this step and run the second script to reformat all unmounted storage volumes.

- a. Run the script: `sn-remount-volumes`

This script might take hours to run on storage volumes that contain data.

- b. As the script runs, review the output and answer any prompts.



As required, you can use the `tail -f` command to monitor the contents of the script's log file (`/var/local/log/sn-remount-volumes.log`). The log file contains more detailed information than the command line output.

```
root@SG:~ # sn-remount-volumes
The configured LDR noid is 12632740

===== Device /dev/sdb =====
Mount and unmount device /dev/sdb and checking file system
consistency:
The device is consistent.
Check rangedb structure on device /dev/sdb:
Mount device /dev/sdb to /tmp/sdb-654321 with rangedb mount options
This device has all rangedb directories.
Found LDR node id 12632740, volume number 0 in the volID file
Attempting to remount /dev/sdb
Device /dev/sdb remounted successfully

===== Device /dev/sdc =====
Mount and unmount device /dev/sdc and checking file system
consistency:
Error: File system consistency check retry failed on device /dev/sdc.
You can see the diagnosis information in the /var/local/log/sn-
remount-volumes.log.

This volume could be new or damaged. If you run sn-recovery-
postinstall.sh,
this volume and any data on this volume will be deleted. If you only
had two
copies of object data, you will temporarily have only a single copy.
StorageGRID Webscale will attempt to restore data redundancy by
making
additional replicated copies or EC fragments, according to the rules
in
the active ILM policy.

Do not continue to the next step if you believe that the data
remaining on
this volume cannot be rebuilt from elsewhere in the grid (for
example, if
your ILM policy uses a rule that makes only one copy or if volumes
have
```

failed on multiple nodes). Instead, contact support to determine how to recover your data.

===== Device /dev/sdd =====

Mount and unmount device /dev/sdd and checking file system consistency:

Failed to mount device /dev/sdd

This device could be an uninitialized disk or has corrupted superblock.

File system check might take a long time. Do you want to continue? (y or n) [y/N]? y

Error: File system consistency check retry failed on device /dev/sdd. You can see the diagnosis information in the /var/local/log/sn-remount-volumes.log.

This volume could be new or damaged. If you run sn-recovery-postinstall.sh, this volume and any data on this volume will be deleted. If you only had two copies of object data, you will temporarily have only a single copy. StorageGRID Webscale will attempt to restore data redundancy by making additional replicated copies or EC fragments, according to the rules in the active ILM policy.

Do not continue to the next step if you believe that the data remaining on this volume cannot be rebuilt from elsewhere in the grid (for example, if your ILM policy uses a rule that makes only one copy or if volumes have failed on multiple nodes). Instead, contact support to determine how to recover your data.

===== Device /dev/sde =====

Mount and unmount device /dev/sde and checking file system consistency:

The device is consistent.

Check rangedb structure on device /dev/sde:

Mount device /dev/sde to /tmp/sde-654321 with rangedb mount options

This device has all rangedb directories.

Found LDR node id 12000078, volume number 9 in the volID file

Error: This volume does not belong to this node. Fix the attached volume and re-run this script.

In the example output, one storage volume was remounted successfully and three storage volumes had errors.

- `/dev/sdb` passed the XFS file system consistency check and had a valid volume structure, so it was remounted successfully. Data on devices that are remounted by the script is preserved.
- `/dev/sdc` failed the XFS file system consistency check because the storage volume was new or corrupt.
- `/dev/sdd` could not be mounted because the disk was uninitialized or the disk's superblock was corrupted. When the script cannot mount a storage volume, it asks if you want to run the file system consistency check.
  - If the storage volume is attached to a new disk, answer **N** to the prompt. You do not need check the file system on a new disk.
  - If the storage volume is attached to an existing disk, answer **Y** to the prompt. You can use the results of the file system check to determine the source of the corruption. The results are saved in the `/var/local/log/sn-remount-volumes.log` log file.
- `/dev/sde` passed the XFS file system consistency check and had a valid volume structure; however, the LDR node ID in the `volID` file did not match the ID for this Storage Node (the configured LDR `noid` displayed at the top). This message indicates that this volume belongs to another Storage Node.

### 3. Review the script output and resolve any issues.



If a storage volume failed the XFS file system consistency check or could not be mounted, carefully review the error messages in the output. You must understand the implications of running the `sn-recovery-postinstall.sh` script on these volumes.

- a. Check to make sure that the results include an entry for all of the volumes you expected. If any volumes are not listed, rerun the script.
- b. Review the messages for all mounted devices. Make sure there are no errors indicating that a storage volume does not belong to this Storage Node.

In the example, the output for `/dev/sde` includes the following error message:

```
Error: This volume does not belong to this node. Fix the attached
volume and re-run this script.
```



If a storage volume is reported as belonging to another Storage Node, contact technical support. If you run the `sn-recovery-postinstall.sh` script, the storage volume will be reformatted, which might cause data loss.

- c. If any storage devices could not be mounted, make a note of the device name, and repair or replace the device.



You must repair or replace any storage devices that could not be mounted.

You will use the device name to look up the volume ID, which is required input when you run the `repair-data` script to restore object data to the volume (the next procedure).

- d. After repairing or replacing all unmountable devices, run the `sn-remount-volumes` script again to confirm that all storage volumes that can be remounted have been remounted.



If a storage volume cannot be mounted or is improperly formatted, and you continue to the next step, the volume and any data on the volume will be deleted. If you had two copies of object data, you will have only a single copy until you complete the next procedure (restoring object data).



Do not run the `sn-recovery-postinstall.sh` script if you believe that the data remaining on a failed storage volume cannot be rebuilt from elsewhere in the grid (for example, if your ILM policy uses a rule that makes only one copy or if volumes have failed on multiple nodes). Instead, contact technical support to determine how to recover your data.

4. Run the `sn-recovery-postinstall.sh` script: `sn-recovery-postinstall.sh`

This script reformats any storage volumes that could not be mounted or that were found to be improperly formatted; rebuilds the Cassandra database on the node, if needed; and starts the services on the Storage Node.

Be aware of the following:

- The script might take hours to run.
- In general, you should leave the SSH session alone while the script is running.
- Do not press **Ctrl+C** while the SSH session is active.
- The script will run in the background if a network disruption occurs and terminates the SSH session, but you can view the progress from the Recovery page.
- If the Storage Node uses the RSM service, the script might appear to stall for 5 minutes as node services are restarted. This 5-minute delay is expected whenever the RSM service boots for the first time.



The RSM service is present on Storage Nodes that include the ADC service.



Some StorageGRID recovery procedures use Reaper to handle Cassandra repairs. Repairs occur automatically as soon as the related or required services have started. You might notice script output that mentions “reaper” or “Cassandra repair.” If you see an error message indicating the repair has failed, run the command indicated in the error message.

5. As the `sn-recovery-postinstall.sh` script runs, monitor the Recovery page in the Grid Manager.

The Progress bar and the Stage column on the Recovery page provide a high-level status of the `sn-recovery-postinstall.sh` script.



## Recovery

Select the failed grid node to recover, enter your provisioning passphrase, and then click Start Recovery to begin the recovery procedure.

### Pending Nodes

<div>Search </div>				
Name	IPv4 Address	State	Recoverable	
No results found.				

### Recovering Grid Node

Name	Start Time	Progress	Stage
DC1-S3	2016-06-02 14:03:35 PDT	<div><div></div></div>	Recovering Cassandra

After the `sn-recovery-postinstall.sh` script has started services on the node, you can restore object data to any storage volumes that were formatted by the script, as described in that procedure.

### Related information


[Reviewing warnings for Storage Node system drive recovery](#)

[Restoring object data to a storage volume, if required](#)

## Restoring object data to a storage volume, if required

If the `sn-recovery-postinstall.sh` script is needed to reformat one or more failed storage volumes, you must restore object data to the reformatted storage volume from other Storage Nodes and Archive Nodes. These steps are not required unless one or more storage volumes were reformatted.

### What you'll need

- You must have confirmed that the recovered Storage Node has a Connection State of **Connected\***  on the **\*Nodes > Overview** tab in the Grid Manager.

### About this task

Object data can be restored from other Storage Nodes, an Archive Node, or a Cloud Storage Pool, assuming that the grid's ILM rules were configured such that object copies are available.



If an ILM rule was configured to store only one replicated copy and that copy existed on a storage volume that failed, you will not be able to recover the object.



If the only remaining copy of an object is in a Cloud Storage Pool, StorageGRID must issue multiple requests to the Cloud Storage Pool endpoint to restore object data. Before performing this procedure, contact technical support for help in estimating the recovery time frame and the associated costs.



If the only remaining copy of an object is on an Archive Node, object data is retrieved from the Archive Node. Due to the latency associated with retrievals from external archival storage systems, restoring object data to a Storage Node from an Archive Node takes longer than restoring copies from other Storage Nodes.

To restore object data, you run the `repair-data` script. This script begins the process of restoring object data and works with ILM scanning to ensure that ILM rules are met. You use different options with the `repair-data` script, based on whether you are restoring replicated data or erasure coded data, as follows:

- **Replicated data:** Two commands are available for restoring replicated data, based on whether you need to repair the entire node or only certain volumes on the node:

```
repair-data start-replicated-node-repair
```

```
repair-data start-replicated-volume-repair
```

- **Erasure coded (EC) data:** Two commands are available for restoring erasure coded data, based on whether you need to repair the entire node or only certain volumes on the node:

```
repair-data start-ec-node-repair
```

```
repair-data start-ec-volume-repair
```

Repairs of erasure coded data can begin while some Storage Nodes are offline. Repair will complete after all nodes are available. You can track repairs of erasure coded data with this command:

```
repair-data show-ec-repair-status
```



The EC repair job temporarily reserves a large amount of storage. Storage alerts might be triggered, but will resolve when the repair is complete. If there is not enough storage for the reservation, the EC repair job will fail. Storage reservations are released when the EC repair job completes, whether the job failed or succeeded.

For more information on using the `repair-data` script, enter `repair-data --help` from the command line of the primary Admin Node.

## Steps

1. Log in to the primary Admin Node:
  - a. Enter the following command: `ssh admin@primary_Admin_Node_IP`
  - b. Enter the password listed in the `Passwords.txt` file.
  - c. Enter the following command to switch to root: `su -`

d. Enter the password listed in the `Passwords.txt` file.

When you are logged in as root, the prompt changes from `$` to `#`.

2. Use the `/etc/hosts` file to find the hostname of the Storage Node for the restored storage volumes. To see a list of all nodes in the grid, enter the following: `cat /etc/hosts`
3. If all storage volumes have failed, repair the entire node. (If only some volumes have failed, go to the next step.)



You cannot run `repair-data` operations for more than one node at the same time. To recover multiple nodes, contact technical support.

- If your grid includes replicated data, use the `repair-data start-replicated-node-repair` command with the `--nodes` option to repair the entire Storage Node.

This command repairs the replicated data on a Storage Node named SG-DC-SN3:

```
repair-data start-replicated-node-repair --nodes SG-DC-SN3
```



As object data is restored, the **Objects Lost** alert is triggered if the StorageGRID system cannot locate replicated object data. Alerts might be triggered on Storage Nodes throughout the system. You should determine the cause of the loss and if recovery is possible. See the instructions for monitoring and troubleshooting StorageGRID.

- If your grid contains erasure coded data, use the `repair-data start-ec-node-repair` command with the `--nodes` option to repair the entire Storage Node.

This command repairs the erasure coded data on a Storage Node named SG-DC-SN3:

```
repair-data start-ec-node-repair --nodes SG-DC-SN3
```

The operation returns a unique `repair ID` that identifies this `repair_data` operation. Use this `repair ID` to track the progress and result of the `repair_data` operation. No other feedback is returned as the recovery process completes.



Repairs of erasure coded data can begin while some Storage Nodes are offline. Repair will complete after all nodes are available.

- If your grid has both replicated and erasure coded data, run both commands.

4. If only some of the volumes have failed, repair the affected volumes.

Enter the volume IDs in hexadecimal. For example, `0000` is the first volume and `000F` is the sixteenth volume. You can specify one volume, a range of volumes, or multiple volumes that are not in a sequence.

All the volumes must be on the same Storage Node. If you need to restore volumes for more than one Storage Node, contact technical support.

- If your grid contains replicated data, use the `start-replicated-volume-repair` command with the `--nodes` option to identify the node. Then add either the `--volumes` or `--volume-range` option, as shown in the following examples.

**Single volume:** This command restores replicated data to volume 0002 on a Storage Node named SG-DC-SN3:

```
repair-data start-replicated-volume-repair --nodes SG-DC-SN3
--volumes 0002
```

**Range of volumes:** This command restores replicated data to all volumes in the range 0003 to 0009 on a Storage Node named SG-DC-SN3:

```
repair-data start-replicated-volume-repair --nodes SG-DC-SN3 --volume
-range 0003-0009
```

**Multiple volumes not in a sequence:** This command restores replicated data to volumes 0001, 0005, and 0008 on a Storage Node named SG-DC-SN3:

```
repair-data start-replicated-volume-repair --nodes SG-DC-SN3
--volumes 0001,0005,0008
```



As object data is restored, the **Objects Lost** alert is triggered if the StorageGRID system cannot locate replicated object data. Alerts might be triggered on Storage Nodes throughout the system. You should determine the cause of the loss and if recovery is possible. See the instructions for monitoring and troubleshooting StorageGRID.

- If your grid contains erasure coded data, use the `start-ec-volume-repair` command with the `--nodes` option to identify the node. Then add either the `--volumes` or `--volume-range` option, as shown in the following examples.

**Single volume:** This command restores erasure coded data to volume 0007 on a Storage Node named SG-DC-SN3:

```
repair-data start-ec-volume-repair --nodes SG-DC-SN3 --volumes 0007
```

**Range of volumes:** This command restores erasure coded data to all volumes in the range 0004 to 0006 on a Storage Node named SG-DC-SN3:

```
repair-data start-ec-volume-repair --nodes SG-DC-SN3 --volume-range
0004-0006
```

**Multiple volumes not in a sequence:** This command restores erasure coded data to volumes 000A,

000C, and 000E on a Storage Node named SG-DC-SN3:

```
repair-data start-ec-volume-repair --nodes SG-DC-SN3 --volumes
000A,000C,000E
```

The `repair-data` operation returns a unique `repair ID` that identifies this `repair_data` operation. Use this `repair ID` to track the progress and result of the `repair_data` operation. No other feedback is returned as the recovery process completes.



Repairs of erasure coded data can begin while some Storage Nodes are offline. Repair will complete after all nodes are available.

- If your grid has both replicated and erasure coded data, run both commands.

5. Monitor the repair of replicated data.

- Select **Nodes > Storage Node being repaired > ILM**.
- Use the attributes in the Evaluation section to determine if repairs are complete.

When repairs are complete, the Awaiting - All attribute indicates 0 objects.

- To monitor the repair in more detail, select **Support > Tools > Grid Topology**.
- Select **grid > Storage Node being repaired > LDR > Data Store**.
- Use a combination of the following attributes to determine, as well as possible, if replicated repairs are complete.



Cassandra inconsistencies might be present, and failed repairs are not tracked.

- **Repairs Attempted (XRPA)**: Use this attribute to track the progress of replicated repairs. This attribute increases each time a Storage Node tries to repair a high-risk object. When this attribute does not increase for a period longer than the current scan period (provided by the **Scan Period — Estimated** attribute), it means that ILM scanning found no high-risk objects that need to be repaired on any nodes.



High-risk objects are objects that are at risk of being completely lost. This does not include objects that do not satisfy their ILM configuration.

- **Scan Period — Estimated (XSCM)**: Use this attribute to estimate when a policy change will be applied to previously ingested objects. If the **Repairs Attempted** attribute does not increase for a period longer than the current scan period, it is probable that replicated repairs are done. Note that the scan period can change. The **Scan Period — Estimated (XSCM)** attribute applies to the entire grid and is the maximum of all node scan periods. You can query the **Scan Period — Estimated** attribute history for the grid to determine an appropriate time frame.

6. Monitor the repair of erasure coded data, and retry any requests that might have failed.

- Determine the status of erasure coded data repairs:
  - Use this command to see the status of a specific `repair-data` operation:

```
repair-data show-ec-repair-status --repair-id repair ID
```

- Use this command to list all repairs:

```
repair-data show-ec-repair-status
```

The output lists information, including `repair ID`, for all previously and currently running repairs.

```
root@DC1-ADM1:~ # repair-data show-ec-repair-status

Repair ID Scope Start Time End Time State Est Bytes
Affected/Repaired Retry Repair
=====
=====
949283 DC1-S-99-10 (Volumes: 1,2) 2016-11-30T15:27:06.9 Success
17359 17359 No
949292 DC1-S-99-10 (Volumes: 1,2) 2016-11-30T15:37:06.9 Failure
17359 0 Yes
949294 DC1-S-99-10 (Volumes: 1,2) 2016-11-30T15:47:06.9 Failure
17359 0 Yes
949299 DC1-S-99-10 (Volumes: 1,2) 2016-11-30T15:57:06.9 Failure
17359 0 Yes
```

- b. If the output shows that the repair operation failed, use the `--repair-id` option to retry the repair.

This command retries a failed node repair, using the repair ID 83930030303133434:

```
repair-data start-ec-node-repair --repair-id 83930030303133434
```

This command retries a failed volume repair, using the repair ID 83930030303133434:

```
repair-data start-ec-volume-repair --repair-id 83930030303133434
```

## Related information

[Administer StorageGRID](#)

[Monitor & troubleshoot](#)

## Checking the storage state after recovering a Storage Node system drive

After recovering the system drive for a Storage Node, you must verify that the desired state of the Storage Node is set to online and ensure that the state will be online by

default whenever the Storage Node server is restarted.

#### What you'll need

- You must be signed in to the Grid Manager using a supported browser.
- The Storage Node has been recovered, and data recovery is complete.

#### Steps

1. Select **Support > Tools > Grid Topology**.
2. Check the values of **Recovered Storage Node > LDR > Storage > Storage State — Desired** and **Storage State — Current**.

The value of both attributes should be Online.

3. If the Storage State — Desired is set to Read-only, complete the following steps:
  - a. Click the **Configuration** tab.
  - b. From the **Storage State — Desired** drop-down list, select **Online**.
  - c. Click **Apply Changes**.
  - d. Click the **Overview** tab and confirm that the values of **Storage State — Desired** and **Storage State — Current** are updated to Online.

## Copyright information

Copyright © 2025 NetApp, Inc. All Rights Reserved. Printed in the U.S. No part of this document covered by copyright may be reproduced in any form or by any means—graphic, electronic, or mechanical, including photocopying, recording, taping, or storage in an electronic retrieval system—without prior written permission of the copyright owner.

Software derived from copyrighted NetApp material is subject to the following license and disclaimer:

THIS SOFTWARE IS PROVIDED BY NETAPP “AS IS” AND WITHOUT ANY EXPRESS OR IMPLIED WARRANTIES, INCLUDING, BUT NOT LIMITED TO, THE IMPLIED WARRANTIES OF MERCHANTABILITY AND FITNESS FOR A PARTICULAR PURPOSE, WHICH ARE HEREBY DISCLAIMED. IN NO EVENT SHALL NETAPP BE LIABLE FOR ANY DIRECT, INDIRECT, INCIDENTAL, SPECIAL, EXEMPLARY, OR CONSEQUENTIAL DAMAGES (INCLUDING, BUT NOT LIMITED TO, PROCUREMENT OF SUBSTITUTE GOODS OR SERVICES; LOSS OF USE, DATA, OR PROFITS; OR BUSINESS INTERRUPTION) HOWEVER CAUSED AND ON ANY THEORY OF LIABILITY, WHETHER IN CONTRACT, STRICT LIABILITY, OR TORT (INCLUDING NEGLIGENCE OR OTHERWISE) ARISING IN ANY WAY OUT OF THE USE OF THIS SOFTWARE, EVEN IF ADVISED OF THE POSSIBILITY OF SUCH DAMAGE.

NetApp reserves the right to change any products described herein at any time, and without notice. NetApp assumes no responsibility or liability arising from the use of products described herein, except as expressly agreed to in writing by NetApp. The use or purchase of this product does not convey a license under any patent rights, trademark rights, or any other intellectual property rights of NetApp.

The product described in this manual may be protected by one or more U.S. patents, foreign patents, or pending applications.

LIMITED RIGHTS LEGEND: Use, duplication, or disclosure by the government is subject to restrictions as set forth in subparagraph (b)(3) of the Rights in Technical Data -Noncommercial Items at DFARS 252.227-7013 (FEB 2014) and FAR 52.227-19 (DEC 2007).

Data contained herein pertains to a commercial product and/or commercial service (as defined in FAR 2.101) and is proprietary to NetApp, Inc. All NetApp technical data and computer software provided under this Agreement is commercial in nature and developed solely at private expense. The U.S. Government has a non-exclusive, non-transferrable, nonsublicensable, worldwide, limited irrevocable license to use the Data only in connection with and in support of the U.S. Government contract under which the Data was delivered. Except as provided herein, the Data may not be used, disclosed, reproduced, modified, performed, or displayed without the prior written approval of NetApp, Inc. United States Government license rights for the Department of Defense are limited to those rights identified in DFARS clause 252.227-7015(b) (FEB 2014).

## Trademark information

NETAPP, the NETAPP logo, and the marks listed at <http://www.netapp.com/TM> are trademarks of NetApp, Inc. Other company and product names may be trademarks of their respective owners.