



NetApp Element Plug-in for VMware vCenter Server 4.10 or earlier

VCP

NetApp
December 14, 2022

Table of Contents

- NetApp Element Plug-in for VMware vCenter Server 4.10 or earlier 1
 - NetApp Element Configuration extension point 1
 - NetApp Element Management extension point 2

NetApp Element Plug-in for VMware vCenter Server 4.10 or earlier

NetApp Element Configuration extension point

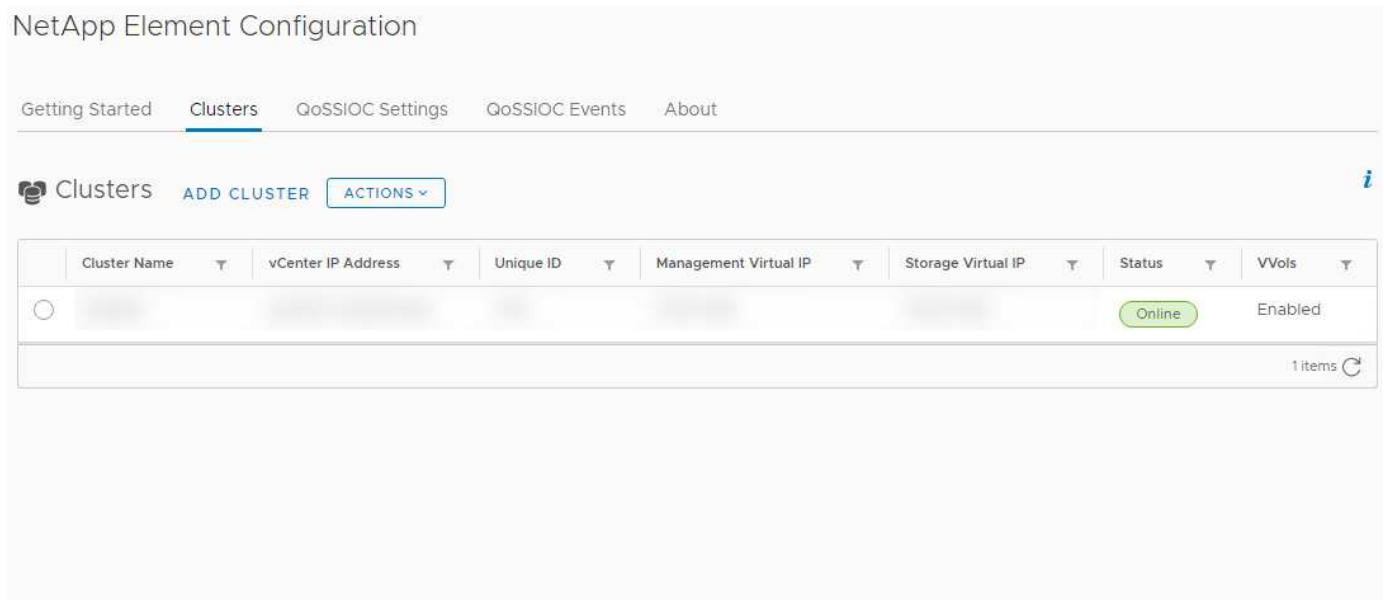
The NetApp Element Configuration extension point enables you to add and manage clusters, assign storage clusters to vCenter Servers for Linked Mode, and configure management node settings for QoSSIOC.



Using NetApp Element Plug-in for VMware vCenter Server to manage cluster resources from other vCenter Servers using [vCenter Linked Mode](#) is limited to local storage clusters only.



Your vSphere Web Client might differ slightly from what is shown in the following image depending on the version of vSphere installed.



The following tabs are available from the NetApp Element Configuration extension point:

- **Getting Started:** Introduces the extension points for the plug-in and the actions that can be performed. You can hide Getting Started pages from each page or restore them from the **About** tab in the NetApp Element Configuration extension point.
- **Clusters:** Manages the NetApp Element clusters controlled by the plug-in. You can also enable, disable, or configure cluster-specific features.
- **QoSSIOC Settings:** Configures your credentials for the QoSSIOC service on the management node to communicate with vCenter.
- **QoSSIOC Events:** Displays information about all detected QoSSIOC events.
- **About:** Displays plug-in version information and provides a service bundle download option.

Find more information

- [NetApp Element Management extension point](#)

- [NetApp Element Plug-in for VMware vCenter Server overview](#)
- [NetApp HCI Documentation](#)
- [SolidFire and Element Resources page](#)

NetApp Element Management extension point

The NetApp Element Management extension point enables you to view cluster information, manage datastores, volumes, user accounts, access groups, and initiators, manage individual group snapshots, and add and manage drives and nodes.

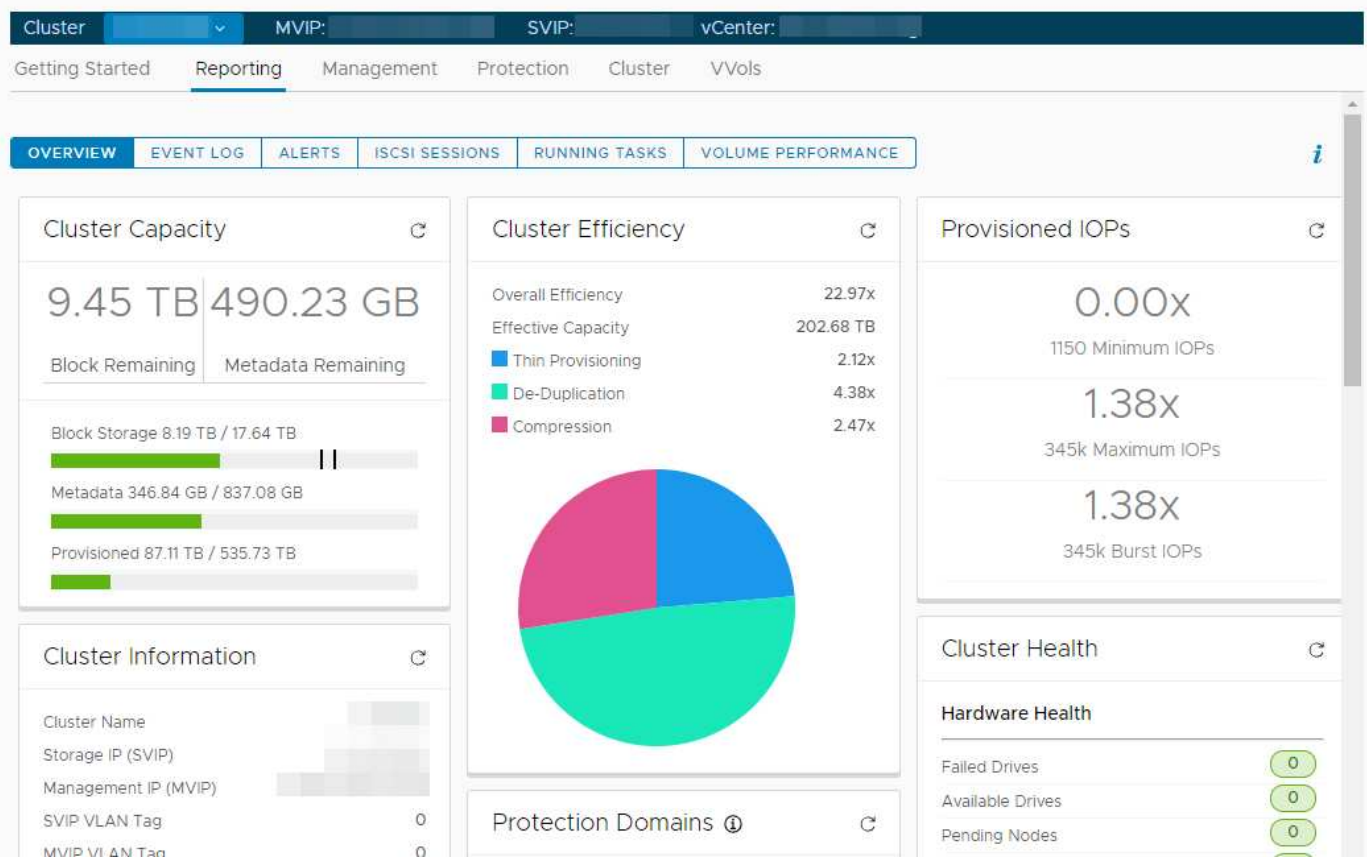


Using NetApp Element Plug-in for VMware vCenter Server to manage cluster resources from other vCenter Servers using [vCenter Linked Mode](#) is limited to local storage clusters only.



Your vSphere Web Client might differ slightly from what is shown in the following image depending on the version of vSphere installed.

NetApp Element Management



The cluster navigation bar allows you to quickly switch between clusters that have been added to the plug-in:

- **Cluster:** If two or more clusters are added, ensure that the cluster you intend to use for management tasks is selected in the navigation bar. Select other added clusters from the drop-down list.
- **MVIP:** The management virtual IP address of the selected cluster.
- **SVIP:** The storage virtual IP address of the selected cluster.

- **vCenter:** The vCenter Server which the selected cluster can access. The cluster is assigned access to a vCenter Server when the cluster is added to the plug-in.

The following tabs are available from the NetApp Element Management extension point:

- **Getting Started:** Introduces the extension points for the plug-in and the actions that can be performed. You can hide Getting Started pages from each page or restore them from the **About** tab in the NetApp Element Management extension point.
- **Reporting:** Displays information about cluster components and provides a cluster performance overview. You can also find information about events, alerts, iSCSI sessions, running tasks, and volume performance from the tab.
- **Management:** Create and manage datastores, volumes, user accounts, access groups, and initiators. You can also perform backup operations, clones, and snapshots. QoS policies are available to be created and managed using NetApp Element software 10 or later.
- **Protection:** Manage individual and group snapshots. You can also create schedules for snapshot creation, pair clusters for real-time replication, and manage volume pairs.
- **Cluster:** Add and manage drives and nodes. You can also create and manage VLANs.
- **VVols:** Manage virtual volumes and their associated storage containers, protocol endpoints, and bindings.

Find more information

- [NetApp Element Configuration extension point](#)
- [NetApp Element Plug-in for VMware vCenter Server overview](#)
- [NetApp HCI Documentation](#)
- [SolidFire and Element Resources page](#)

Copyright information

Copyright © 2022 NetApp, Inc. All Rights Reserved. Printed in the U.S. No part of this document covered by copyright may be reproduced in any form or by any means—graphic, electronic, or mechanical, including photocopying, recording, taping, or storage in an electronic retrieval system—without prior written permission of the copyright owner.

Software derived from copyrighted NetApp material is subject to the following license and disclaimer:

THIS SOFTWARE IS PROVIDED BY NETAPP “AS IS” AND WITHOUT ANY EXPRESS OR IMPLIED WARRANTIES, INCLUDING, BUT NOT LIMITED TO, THE IMPLIED WARRANTIES OF MERCHANTABILITY AND FITNESS FOR A PARTICULAR PURPOSE, WHICH ARE HEREBY DISCLAIMED. IN NO EVENT SHALL NETAPP BE LIABLE FOR ANY DIRECT, INDIRECT, INCIDENTAL, SPECIAL, EXEMPLARY, OR CONSEQUENTIAL DAMAGES (INCLUDING, BUT NOT LIMITED TO, PROCUREMENT OF SUBSTITUTE GOODS OR SERVICES; LOSS OF USE, DATA, OR PROFITS; OR BUSINESS INTERRUPTION) HOWEVER CAUSED AND ON ANY THEORY OF LIABILITY, WHETHER IN CONTRACT, STRICT LIABILITY, OR TORT (INCLUDING NEGLIGENCE OR OTHERWISE) ARISING IN ANY WAY OUT OF THE USE OF THIS SOFTWARE, EVEN IF ADVISED OF THE POSSIBILITY OF SUCH DAMAGE.

NetApp reserves the right to change any products described herein at any time, and without notice. NetApp assumes no responsibility or liability arising from the use of products described herein, except as expressly agreed to in writing by NetApp. The use or purchase of this product does not convey a license under any patent rights, trademark rights, or any other intellectual property rights of NetApp.

The product described in this manual may be protected by one or more U.S. patents, foreign patents, or pending applications.

LIMITED RIGHTS LEGEND: Use, duplication, or disclosure by the government is subject to restrictions as set forth in subparagraph (b)(3) of the Rights in Technical Data -Noncommercial Items at DFARS 252.227-7013 (FEB 2014) and FAR 52.227-19 (DEC 2007).

Data contained herein pertains to a commercial product and/or commercial service (as defined in FAR 2.101) and is proprietary to NetApp, Inc. All NetApp technical data and computer software provided under this Agreement is commercial in nature and developed solely at private expense. The U.S. Government has a non-exclusive, non-transferrable, nonsublicensable, worldwide, limited irrevocable license to use the Data only in connection with and in support of the U.S. Government contract under which the Data was delivered. Except as provided herein, the Data may not be used, disclosed, reproduced, modified, performed, or displayed without the prior written approval of NetApp, Inc. United States Government license rights for the Department of Defense are limited to those rights identified in DFARS clause 252.227-7015(b) (FEB 2014).

Trademark information

NETAPP, the NETAPP logo, and the marks listed at <http://www.netapp.com/TM> are trademarks of NetApp, Inc. Other company and product names may be trademarks of their respective owners.