



# Redirecting Storage Platform

## Virtual Desktop Service

Toby vanRoojen  
February 17, 2021

# Table of Contents

Redirecting Storage Platform ..... 1

    Overview ..... 1

# Redirecting Storage Platform

## Overview

Virtual Desktop Service deployment technologies allow for a variety of storage options depending on the underlying infrastructure, this guide addresses how to make a change post-deployment.

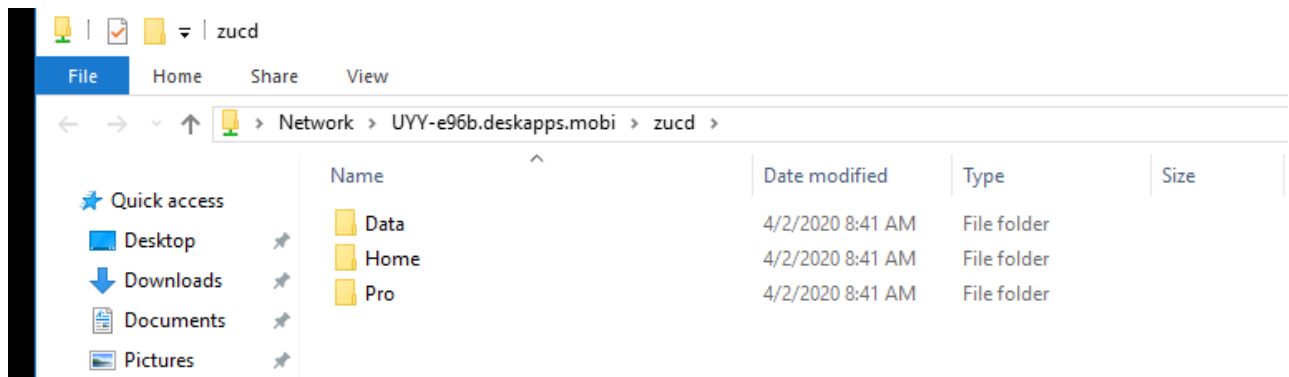
Virtual desktop performance depends on a variety of key resources, storage performance is one of the primary variables. As requirements change and workloads evolve, the need to change the storage infrastructure is a common task. In nearly all cases this involves migrating from a file server platform to NetApp storage technology (such as Azure NetApp Files, NetApp Cloud Volumes Service in Google or NetApp Cloud Volumes ONTAP in AWS) since these technologies typically offer the best performance profile for end user computing environments.

## Creating the new storage layer

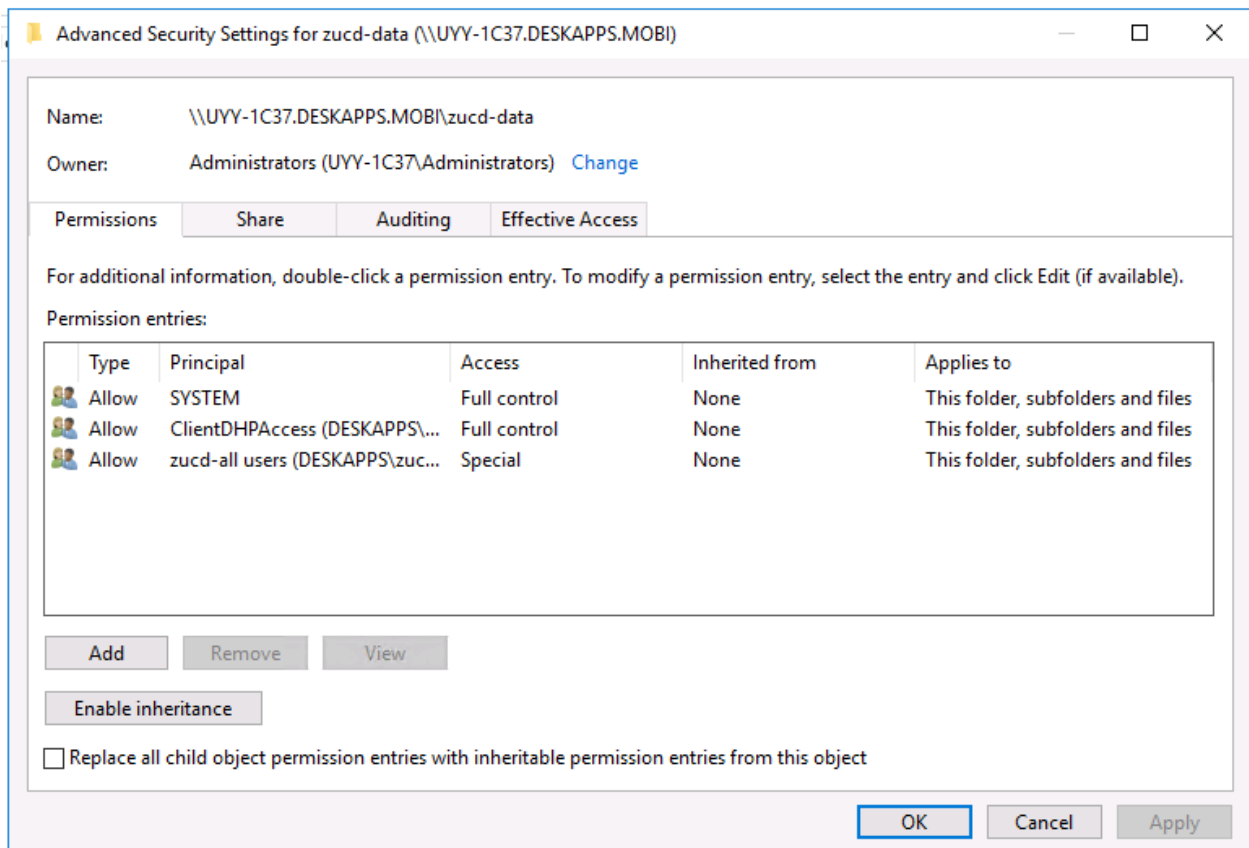
Due to the wide variety of potential storage services across a wide variety of cloud and HCI infrastructure providers, this guide assumes a new storage service has already been established and with the SMB path(s) known.

## Create storage folders

1. In the new storage service, create three folders:
  - /Data
  - /Home
  - /Pro



2. Set Folder Permissions
  - a. On Folder Properties, select *Security*, >*Advanced* > *Disable Inheritance*



- b. Adjust the remaining settings to match the settings on the original storage layer as originally created by the deployment automation.

## Moving data

The directories, data, files and security settings can be moved a variety of ways. The following robocopy syntax will achieve the necessary changes. The paths need to be changed to match your environment.

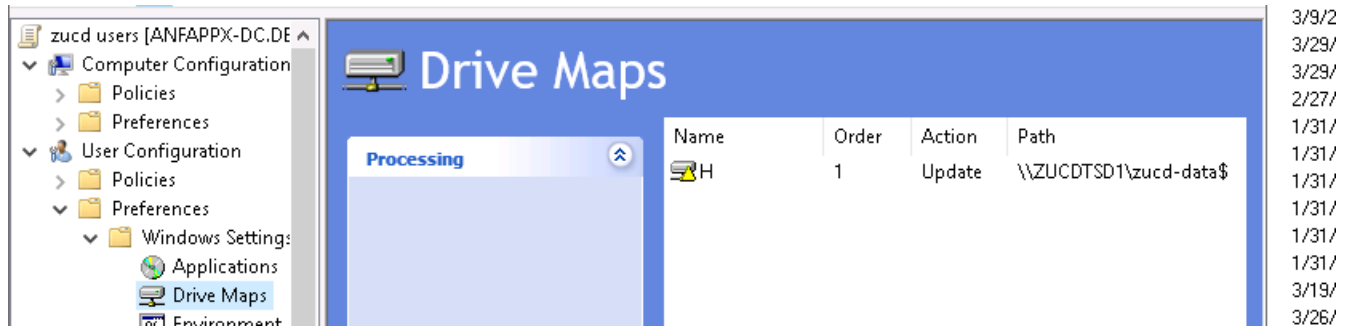
```
robocopy c:\data\zucd \\uyv-1c37.deskapps.mobi\zucd-data /xd ~snapshot /MIR /CopyAll /R:1 /W:1 /tee /log:C:\temp\roboitD.txt
```

## Redirecting the SMB path at cutover

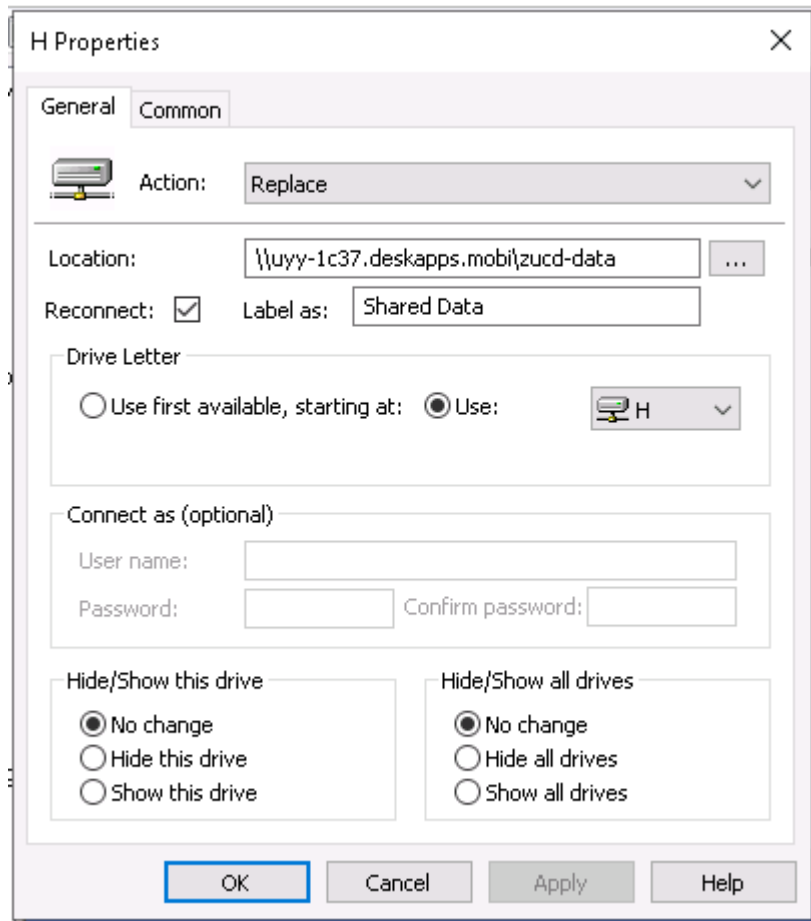
When the time for cutover comes, a few changes will redirect all the storage functionality across the VDS environment.

### Update GPOs

1. The Users GPO (named <company-code>-users) needs to be updated with the new share path. Select *User Configuration > Windows Settings > Preferences > Drive Maps*



2. Right Click on H:, select Properties > Edit > Action: Replace and enter the new Path



3. With Classic or Hybrid AD update the share defined in ADUC in the company OU. This is reflected in VDS folder management.



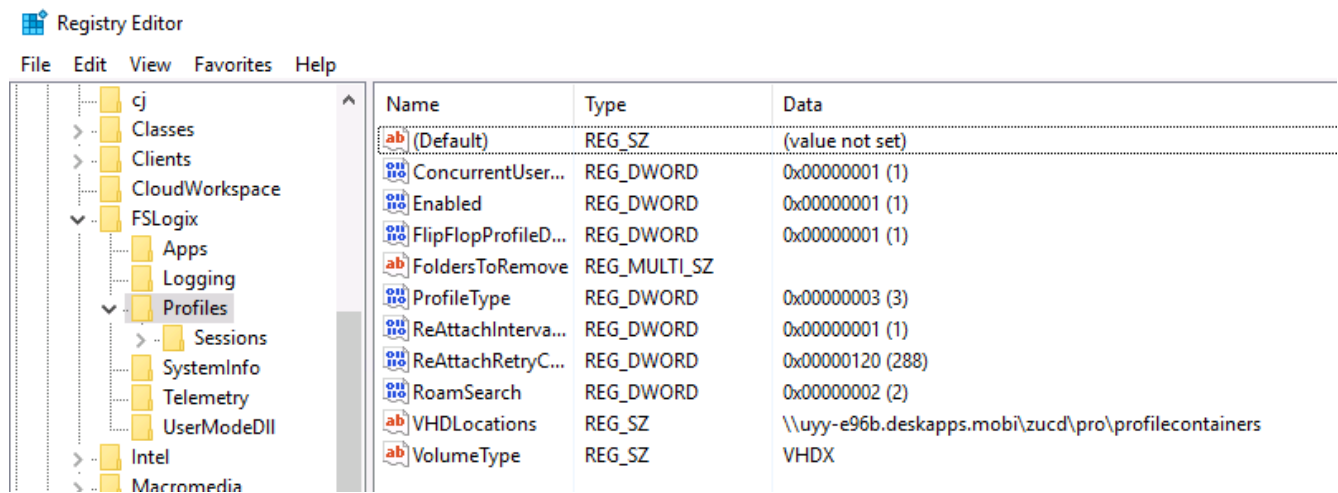
### Update FSLogix profile paths

1. Open Regedit on the original file server and any other provisioned Session Hosts.



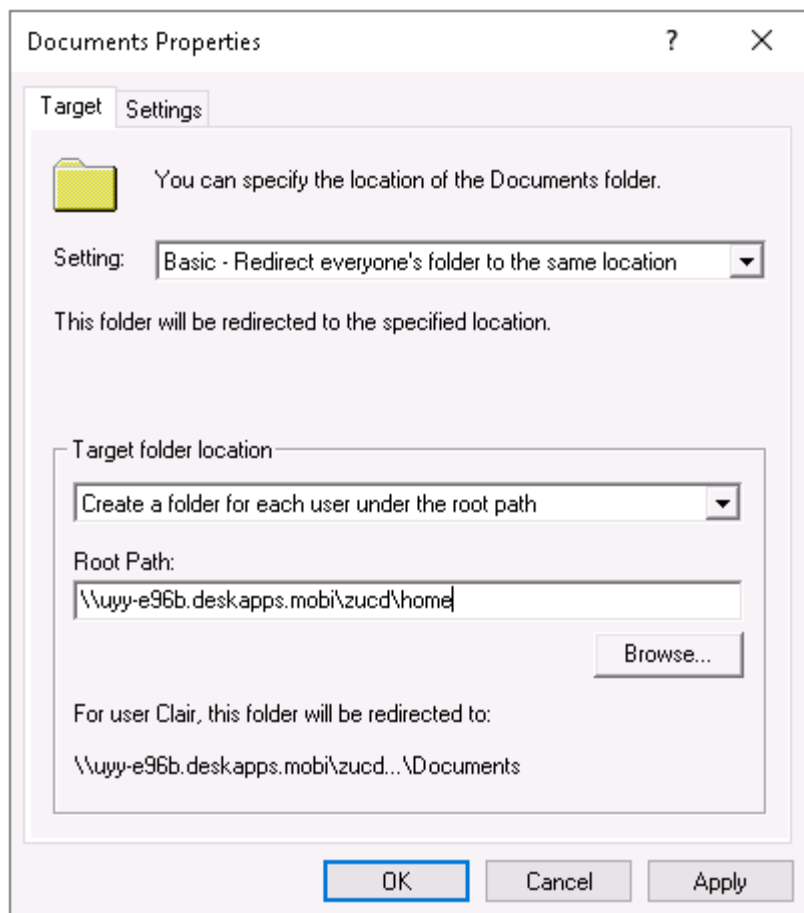
This can also be set via a GPO policy if desired.

2. Edit the *VHDLocations* value with the new value. This should be the new SMB path plus *pro/profilecontainers* as shown in the screenshot below.



### Update the folder redirection settings for the home directories

1. Open Group Policy Management, select Users GPO linked to DC=domain,DC=mobi/Cloud Workspace/Cloud Workspace Companies/<company-code>/<company-code>-desktop users.
2. Edit folder redirection paths under User Configuration>Policies>Windows Settings>Folder Redirection.
3. Only Desktop and Documents needs updated and the paths should match the new SMB path mount point for Home volume.

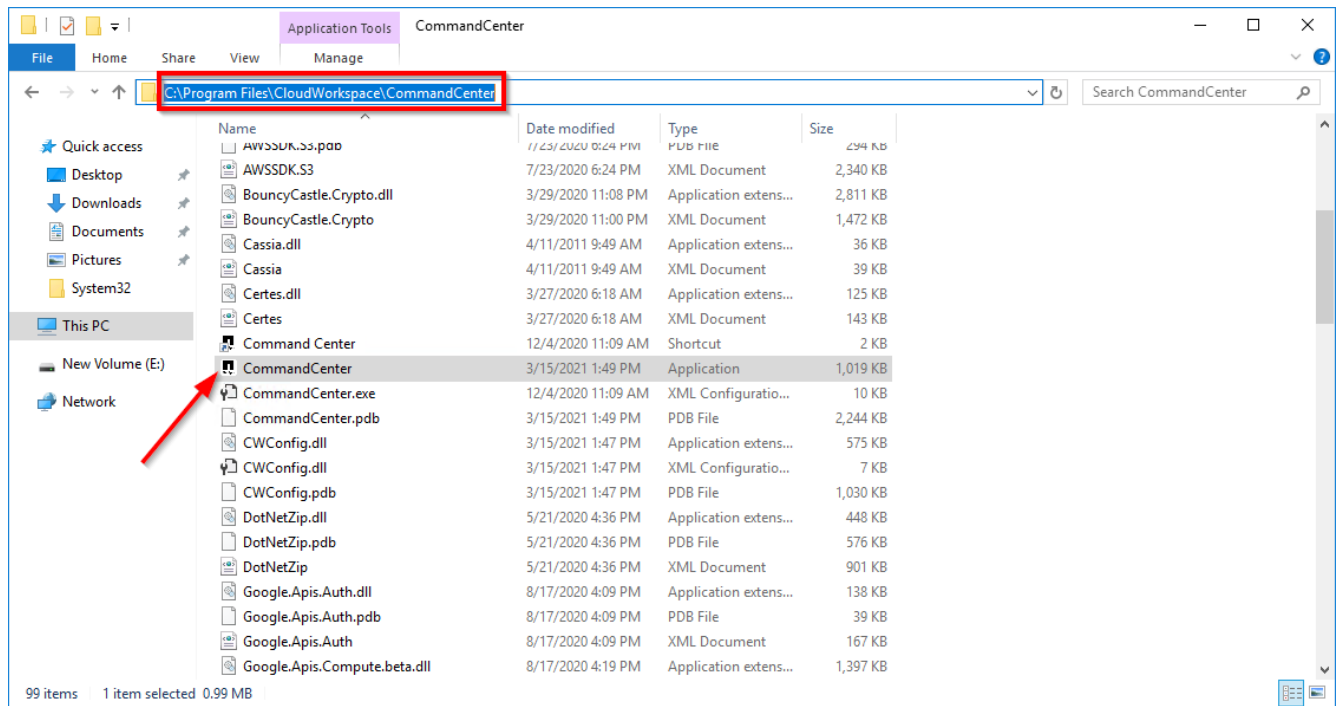


### Update the VDS SQL database with Command Center

CWMGR1 contains a helper utility applications called Command Center which can bulk update the VDS database.

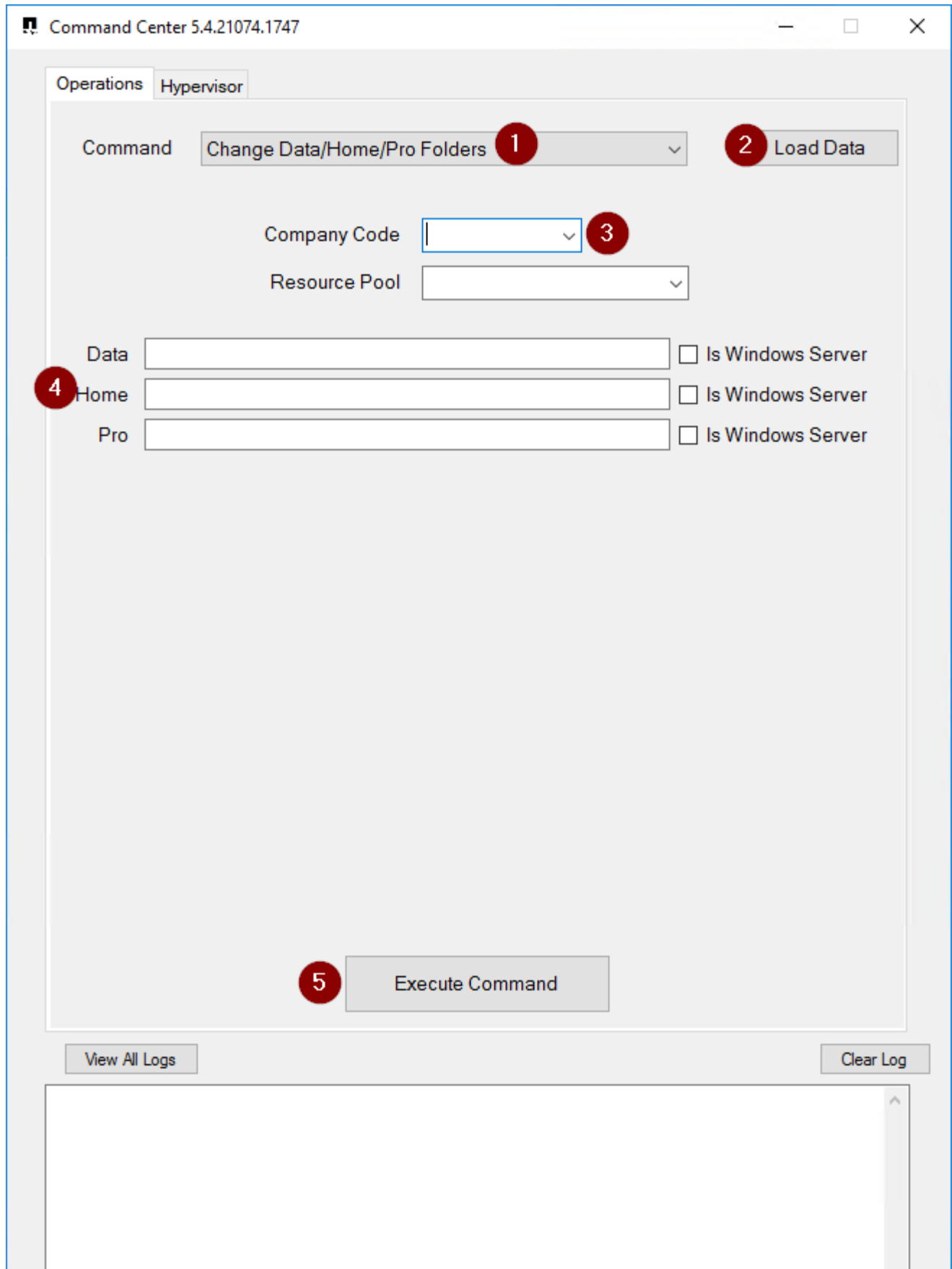
#### To make the final database updates:

1. Connect to CWMGR1, navigate and run CommandCenter.exe



2. Navigate to the *Operations* tab, click *Load Data* to populate the Company Code drop down, select the company code, and enter the new storage paths(s) for the storage layer then click *Execute Command*.





## Copyright Information

Copyright © 2021 NetApp, Inc. All rights reserved. Printed in the U.S. No part of this document covered by copyright may be reproduced in any form or by any means-graphic, electronic, or mechanical, including photocopying, recording, taping, or storage in an electronic retrieval system-without prior written permission of the copyright owner.

Software derived from copyrighted NetApp material is subject to the following license and disclaimer:

THIS SOFTWARE IS PROVIDED BY NETAPP "AS IS" AND WITHOUT ANY EXPRESS OR IMPLIED WARRANTIES, INCLUDING, BUT NOT LIMITED TO, THE IMPLIED WARRANTIES OF MERCHANTABILITY AND FITNESS FOR A PARTICULAR PURPOSE, WHICH ARE HEREBY DISCLAIMED. IN NO EVENT SHALL NETAPP BE LIABLE FOR ANY DIRECT, INDIRECT, INCIDENTAL, SPECIAL, EXEMPLARY, OR CONSEQUENTIAL DAMAGES (INCLUDING, BUT NOT LIMITED TO, PROCUREMENT OF SUBSTITUTE GOODS OR SERVICES; LOSS OF USE, DATA, OR PROFITS; OR BUSINESS INTERRUPTION) HOWEVER CAUSED AND ON ANY THEORY OF LIABILITY, WHETHER IN CONTRACT, STRICT LIABILITY, OR TORT (INCLUDING NEGLIGENCE OR OTHERWISE) ARISING IN ANY WAY OUT OF THE USE OF THIS SOFTWARE, EVEN IF ADVISED OF THE POSSIBILITY OF SUCH DAMAGE.

NetApp reserves the right to change any products described herein at any time, and without notice. NetApp assumes no responsibility or liability arising from the use of products described herein, except as expressly agreed to in writing by NetApp. The use or purchase of this product does not convey a license under any patent rights, trademark rights, or any other intellectual property rights of NetApp.

The product described in this manual may be protected by one or more U.S. patents, foreign patents, or pending applications.

RESTRICTED RIGHTS LEGEND: Use, duplication, or disclosure by the government is subject to restrictions as set forth in subparagraph (c)(1)(ii) of the Rights in Technical Data and Computer Software clause at DFARS 252.277-7103 (October 1988) and FAR 52-227-19 (June 1987).

## Trademark Information

NETAPP, the NETAPP logo, and the marks listed at <http://www.netapp.com/TM> are trademarks of NetApp, Inc. Other company and product names may be trademarks of their respective owners.