



NetApp VDS v5.4 videos

Virtual Desktop Service

NetApp
May 12, 2021

Table of Contents

- NetApp VDS v5.4 videos 1
 - VDS Content on NetApp TV 1
 - Deploy WVD or RDS Into Azure with NetApp VDS v5.4 1
 - Create a WVD Host Pool with NetApp VDS v5.4 2
 - Add and Manage WVD Users and App Groups in Azure with NetApp VDS v5.4 3
 - Optimize Azure Resource Consumption in VDS 5.4 3
 - Day to Day Administration of RDS and WVD with NetApp VDS v5.4 4
 - Update WVD host pool from v1 (Fall 2019) to v2 (Spring 2020) 4

NetApp VDS v5.4 videos

VDS Content on NetApp TV

VDS, GFC, and ANF - The Solution for Globally Deployed Cloud Desktops

Azure NetApp Files hosts high performance storage, while Virtual Desktop Service and Global File Cache manage workspaces and site regions from a single control panel for your globally deployed cloud desktops.



<https://tv.netapp.com/detail/video/6182654694001>

Deploy WVD or RDS Into Azure with NetApp VDS v5.4

Overview



NetApp Virtual Desktop Service

Deployment & AD Connect

Toby vanRoojen
Product Marketing Manager
June, 2020

Create a WVD Host Pool with NetApp VDS v5.4

Overview



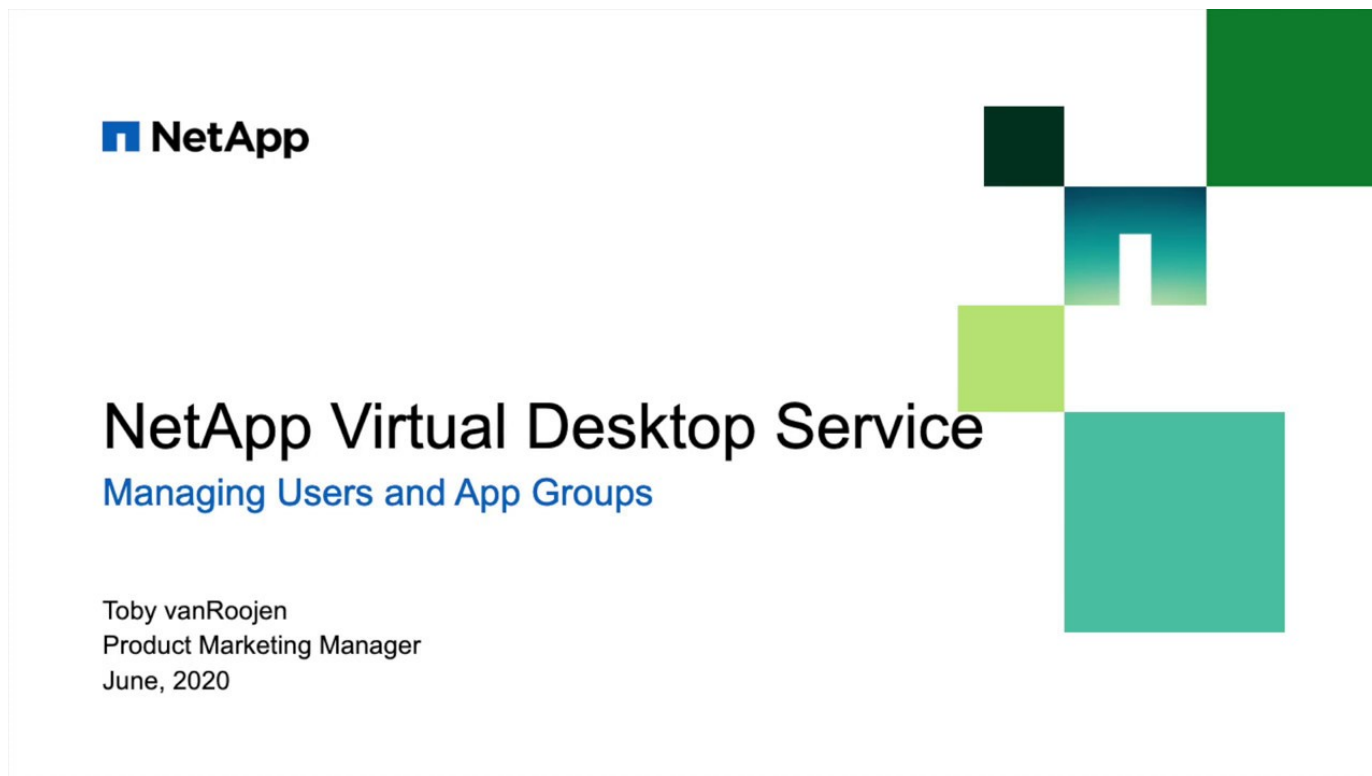
NetApp Virtual Desktop Service

Creating WVD Host Pools

Toby vanRoojen
Product Marketing Manager
June, 2020

Add and Manage WVD Users and App Groups in Azure with NetApp VDS v5.4

Overview



Optimize Azure Resource Consumption in VDS 5.4

Overview



NetApp Virtual Desktop Service

Cost Containment and Optimization

Toby vanRoijen
Product Marketing Manager
June, 2020

=

Day to Day Administration of RDS and WVD with NetApp VDS v5.4

Overview

 | <https://img.youtube.com/vi/uGEgA3hFdM4/maxresdefault.jpg>

Update WVD host pool from v1 (Fall 2019) to v2 (Spring 2020)

Overview

This guide outlines the process of using the Virtual Desktop Service (VDS) interface to do an in-place upgrade of an existing WVD Fall Release (v1) host pool, resulting in a WVD Spring Release (v2) host pool. Without VDS, this transformation requires highly skilled architects to figure this out on their own or do a complete re-deployment of the environment.

Prerequisites

This guide assumes that the customer has the following:

- At least one Fall Release (v1) WVD host pool deployed
- A v5.4 (or greater) Virtual Desktop Service Deployment
- All VMs in the host pool must be online and running

It is worth noting that NetApp's Virtual Desktop Service can import existing host pools, so customers can

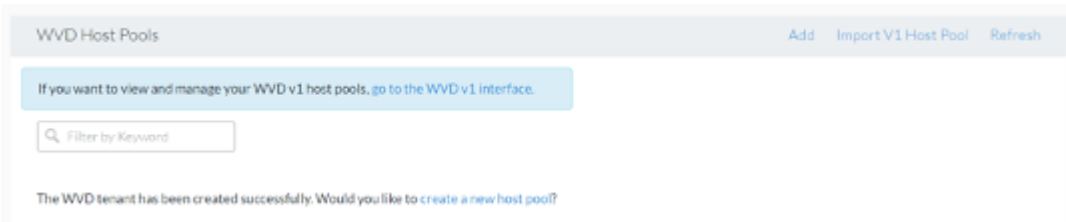
leverage VDS to perform in-place upgrades even if VDS was not used to deploy the host pool initially.



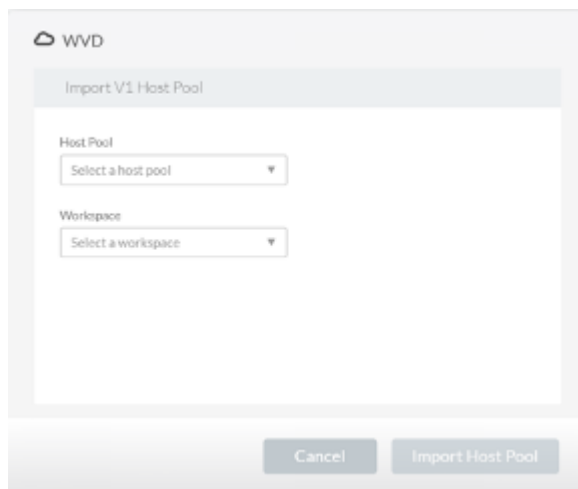
It is a best practice to perform this action during an established maintenance window in which end users are instructed not to log in (or the VMs are set to not allow user connections), as the end user desktops will not be accessible while this action is performed.

Process steps

1. Navigate to the Workspaces module, then to the WVD tab. You will then see the Host Pools section, which now includes an option to leverage VDS' automation to upgrade a host pool.
2. Click on the link that reads Import V1 Host Pool to identify the Host Pool to be upgraded to V2 (the WVD Spring Release) to proceed.



3. Next, select the host pool you want to upgrade from the drop-down menu and select the workspace to assign it to, then click Import Host Pool button to start the automated upgrade process.



4. Repeat this process for each host pool you want to upgrade. When the automation completes you will see your newly upgraded Spring Release (v2) host pool in the WVD tab of VDS.

Video demo



NetApp Virtual Desktop Service

Upgrading Spring (v1) WVD into Fall (v2)

Toby vanRoojen
Product Marketing Manager
September 2020



Please contact your service representatives with any additional questions you may have.

Copyright Information

Copyright © 2021 NetApp, Inc. All rights reserved. Printed in the U.S. No part of this document covered by copyright may be reproduced in any form or by any means-graphic, electronic, or mechanical, including photocopying, recording, taping, or storage in an electronic retrieval system-without prior written permission of the copyright owner.

Software derived from copyrighted NetApp material is subject to the following license and disclaimer:

THIS SOFTWARE IS PROVIDED BY NETAPP "AS IS" AND WITHOUT ANY EXPRESS OR IMPLIED WARRANTIES, INCLUDING, BUT NOT LIMITED TO, THE IMPLIED WARRANTIES OF MERCHANTABILITY AND FITNESS FOR A PARTICULAR PURPOSE, WHICH ARE HEREBY DISCLAIMED. IN NO EVENT SHALL NETAPP BE LIABLE FOR ANY DIRECT, INDIRECT, INCIDENTAL, SPECIAL, EXEMPLARY, OR CONSEQUENTIAL DAMAGES (INCLUDING, BUT NOT LIMITED TO, PROCUREMENT OF SUBSTITUTE GOODS OR SERVICES; LOSS OF USE, DATA, OR PROFITS; OR BUSINESS INTERRUPTION) HOWEVER CAUSED AND ON ANY THEORY OF LIABILITY, WHETHER IN CONTRACT, STRICT LIABILITY, OR TORT (INCLUDING NEGLIGENCE OR OTHERWISE) ARISING IN ANY WAY OUT OF THE USE OF THIS SOFTWARE, EVEN IF ADVISED OF THE POSSIBILITY OF SUCH DAMAGE.

NetApp reserves the right to change any products described herein at any time, and without notice. NetApp assumes no responsibility or liability arising from the use of products described herein, except as expressly agreed to in writing by NetApp. The use or purchase of this product does not convey a license under any patent rights, trademark rights, or any other intellectual property rights of NetApp.

The product described in this manual may be protected by one or more U.S. patents, foreign patents, or pending applications.

RESTRICTED RIGHTS LEGEND: Use, duplication, or disclosure by the government is subject to restrictions as set forth in subparagraph (c)(1)(ii) of the Rights in Technical Data and Computer Software clause at DFARS 252.277-7103 (October 1988) and FAR 52-227-19 (June 1987).

Trademark Information

NETAPP, the NETAPP logo, and the marks listed at <http://www.netapp.com/TM> are trademarks of NetApp, Inc. Other company and product names may be trademarks of their respective owners.