



# Overview of OnCommand Workflow Automation

## OnCommand Workflow Automation 5.1

NetApp  
June 11, 2024

# Table of Contents

- Overview of OnCommand Workflow Automation ..... 1
  - WFA features ..... 1
  - WFA license information ..... 1
  - OnCommand Workflow Automation deployment architecture ..... 2
  - OnCommand Workflow Automation installation and setup overview ..... 2
  - Known limitations for OnCommand Workflow Automation ..... 3

# Overview of OnCommand Workflow Automation

OnCommand Workflow Automation (WFA) is a software solution that helps to automate storage management tasks, such as provisioning, migration, decommissioning, data protection configurations, and cloning storage. You can use WFA to build workflows to complete tasks that are specified by your processes. WFA supports ONTAP.

A workflow is a repetitive and procedural task that consists of sequential steps, including the following types of tasks:

- Provisioning, migrating, or decommissioning storage for databases or file systems
- Setting up a new virtualization environment, including storage switches and datastores
- Setting up storage for an application as part of an end-to-end orchestration process

Storage architects can define workflows to follow best practices and meet organizational requirements, such as the following:

- Using required naming conventions
- Setting unique options for storage objects
- Selecting resources
- Integrating internal configuration management database (CMDB) and ticketing applications

## WFA features

- Workflow design portal to build workflows

The workflow design portal includes several building blocks, such as commands, templates, finders, filters, and functions, that are used to create workflows. The designer enables you to include advanced capabilities to workflows such as automated resource selection, row repetition (looping), and approval points.

The workflow design portal also includes building blocks, such as dictionary entries, cache queries, and data source types, for caching data from external systems.

- Execution portal to execute workflows, verify status of workflow execution, and access logs
- Administration/Settings option for tasks such as setting up WFA, connecting to data sources, and configuring user credentials
- Web service interfaces to invoke workflows from external portals and data center orchestration software
- Storage Automation Store to download WFA packs. The ONTAP 9.7.0 pack is bundled with WFA 5.1.

## WFA license information

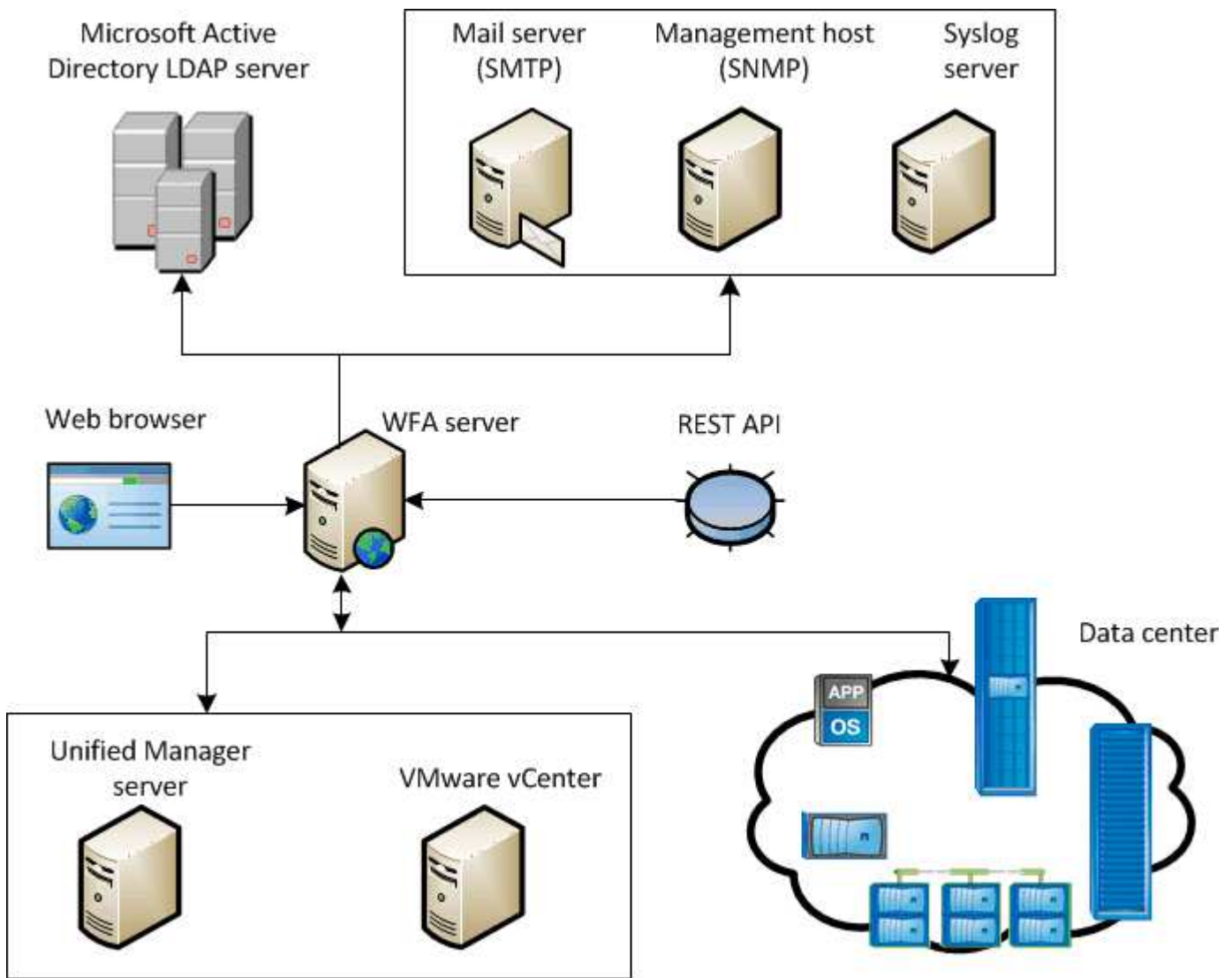
No license is required for using the OnCommand Workflow Automation server.

# OnCommand Workflow Automation deployment architecture

OnCommand Workflow Automation (WFA) server is installed to orchestrate the workflow operations across several datacenters.

You can centrally manage your automation environment by connecting your WFA server to several Active IQ Unified Manager deployments and VMware vCenters.

The following illustration shows a deployment example:

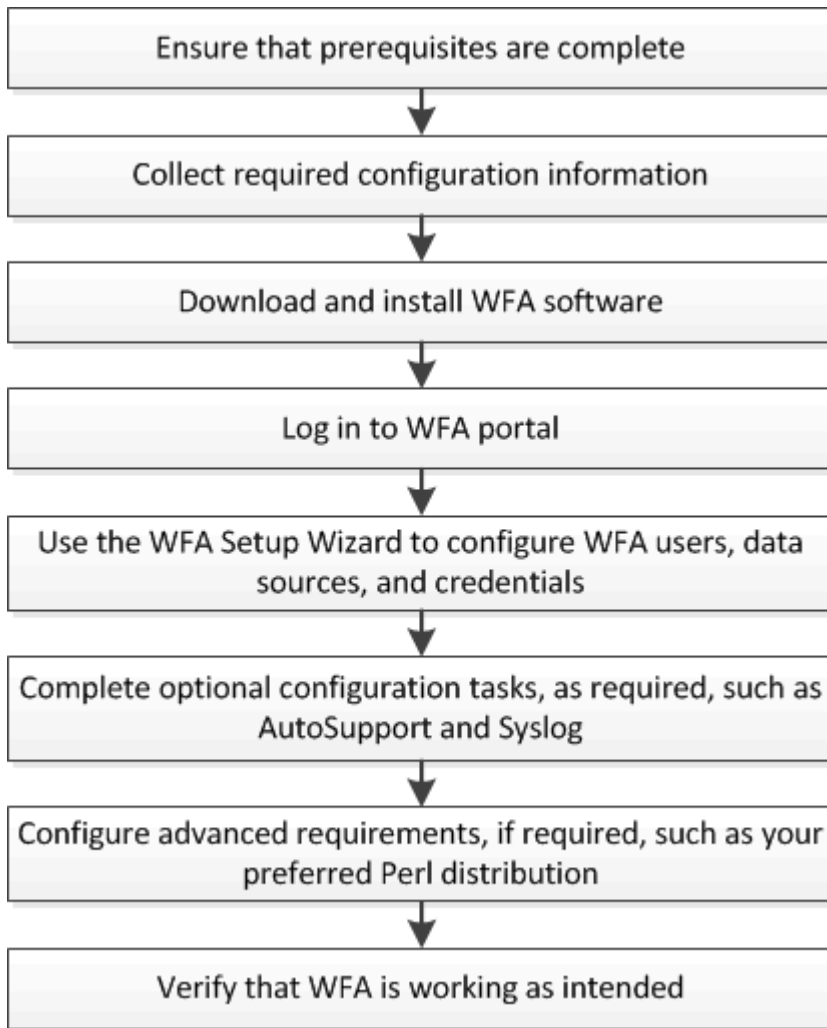


OnCommand Workflow Automation (WFA) deployment

## OnCommand Workflow Automation installation and setup overview

Installing OnCommand Workflow Automation (WFA) includes performing tasks such as preparing for the installation, downloading the WFA installer, and running the installer. After the installation is complete, you can configure WFA to meet your requirements.

The following flowchart illustrates the installation and configuration tasks:



## Known limitations for OnCommand Workflow Automation

OnCommand Workflow Automation (WFA) 5.1 includes some limitations and unsupported features that you should be aware of before you install and configure WFA.

- **LDAP authentication**

- You can use only Microsoft Active Directory Lightweight Directory Access Protocol (LDAP) server for LDAP authentication.
- You must be a member of an LDAP group in order to use LDAP authentication.
- You must not use an LDAP user name that is part of a hierarchical structure of multiple domains for authentication or notification.



Microsoft Active Directory Lightweight Directory Services (AD LDS) is not supported.

- **WFA data sources types**

OnCommand Unified Manager 6.0, 6.1, and 6.2 data source types are deprecated in the WFA 4.1 release, and these data source types will not be supported in future releases.

- **WFA installed on Linux**

- Certified content from Data ONTAP operating in 7-Mode is currently not available.
- Commands that include only PowerShell code are not compatible with Linux.
- Certified commands for 7-Mode and VMware are currently not ported to Perl, and are therefore not compatible with Linux.

- **Creating category names**

- When a hyphen (-) is used in a category name, it is replaced with a space once the category is saved. For example, if the category name "abc-xyz" is provided, the category name is saved as "abc xyz", with the hyphen removed. To avoid this issue, do not use hyphens in category names.
- When a colon (:) is used in a category name, the text string before the colon is ignored once the category is saved. For example, if the category name "abc : xyz" is provided, the category name is saved as "xyz", with the "abc" string removed. To avoid this issue, do not use colons in category names.
- There is no check to prevent two categories having the same name. However, this causes a problem when selecting these categories from the navigation pane. To avoid this issue, make sure that each category name is unique.

## Copyright information

Copyright © 2024 NetApp, Inc. All Rights Reserved. Printed in the U.S. No part of this document covered by copyright may be reproduced in any form or by any means—graphic, electronic, or mechanical, including photocopying, recording, taping, or storage in an electronic retrieval system—without prior written permission of the copyright owner.

Software derived from copyrighted NetApp material is subject to the following license and disclaimer:

THIS SOFTWARE IS PROVIDED BY NETAPP “AS IS” AND WITHOUT ANY EXPRESS OR IMPLIED WARRANTIES, INCLUDING, BUT NOT LIMITED TO, THE IMPLIED WARRANTIES OF MERCHANTABILITY AND FITNESS FOR A PARTICULAR PURPOSE, WHICH ARE HEREBY DISCLAIMED. IN NO EVENT SHALL NETAPP BE LIABLE FOR ANY DIRECT, INDIRECT, INCIDENTAL, SPECIAL, EXEMPLARY, OR CONSEQUENTIAL DAMAGES (INCLUDING, BUT NOT LIMITED TO, PROCUREMENT OF SUBSTITUTE GOODS OR SERVICES; LOSS OF USE, DATA, OR PROFITS; OR BUSINESS INTERRUPTION) HOWEVER CAUSED AND ON ANY THEORY OF LIABILITY, WHETHER IN CONTRACT, STRICT LIABILITY, OR TORT (INCLUDING NEGLIGENCE OR OTHERWISE) ARISING IN ANY WAY OUT OF THE USE OF THIS SOFTWARE, EVEN IF ADVISED OF THE POSSIBILITY OF SUCH DAMAGE.

NetApp reserves the right to change any products described herein at any time, and without notice. NetApp assumes no responsibility or liability arising from the use of products described herein, except as expressly agreed to in writing by NetApp. The use or purchase of this product does not convey a license under any patent rights, trademark rights, or any other intellectual property rights of NetApp.

The product described in this manual may be protected by one or more U.S. patents, foreign patents, or pending applications.

LIMITED RIGHTS LEGEND: Use, duplication, or disclosure by the government is subject to restrictions as set forth in subparagraph (b)(3) of the Rights in Technical Data -Noncommercial Items at DFARS 252.227-7013 (FEB 2014) and FAR 52.227-19 (DEC 2007).

Data contained herein pertains to a commercial product and/or commercial service (as defined in FAR 2.101) and is proprietary to NetApp, Inc. All NetApp technical data and computer software provided under this Agreement is commercial in nature and developed solely at private expense. The U.S. Government has a non-exclusive, non-transferrable, nonsublicensable, worldwide, limited irrevocable license to use the Data only in connection with and in support of the U.S. Government contract under which the Data was delivered. Except as provided herein, the Data may not be used, disclosed, reproduced, modified, performed, or displayed without the prior written approval of NetApp, Inc. United States Government license rights for the Department of Defense are limited to those rights identified in DFARS clause 252.227-7015(b) (FEB 2014).

## Trademark information

NETAPP, the NETAPP logo, and the marks listed at <http://www.netapp.com/TM> are trademarks of NetApp, Inc. Other company and product names may be trademarks of their respective owners.