

FAS500f Systems Installation and Setup Instructions

Prepare for installation

1

Install hardware

2

Cable configuration-
dependent options

3

Complete system setup
and configuration

4

Prepare for installation | Stage 1



Pre-setup

1. Unpack all boxes and inventory contents.

Attention: Customers with specific power requirements must check [Hardware Universe](#) for their configuration options.

2. Watch the [Setup Videos](#).

3. Review the [NetApp ONTAP Configuration Guide](#).



Contents
in the box

Cables in your shipment are order-dependent. Not all cables shown may be in your shipment.

25 GbE cable (SFP28)
HA and cluster interconnect



Part numbers:
X6566B-05-R6 (112-00639), 0.5m
X6566B-2-R6 (112-00598), 2m
X6566B-5-R6 (112-00600), 5m

32 Gb FC (SFP+ Op)
FC optical network cable



Part numbers:
X66250-2 (112-00342), 2m
X66250-5 (112-00344), 5m
X66250-15 (112-00346), 15m

RJ-45 cables
Wrench port (e0M/BMC)
Data port (e0a/e0b)
(order-dependent)



Part numbers:
X5585-R6 (112-00291), 3m
X6562-R6 (112-00196), 5m

Additional cables



Ethernet cables

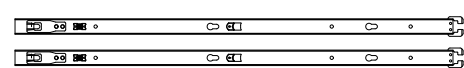


Power cables



micro USB console cable

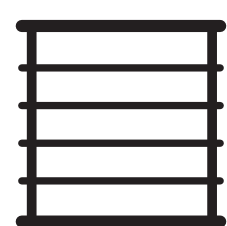
Slide rail kit



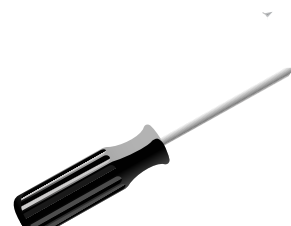
Note: For more cable information and part numbers, see the [Hardware Universe](#).



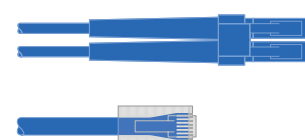
You provide



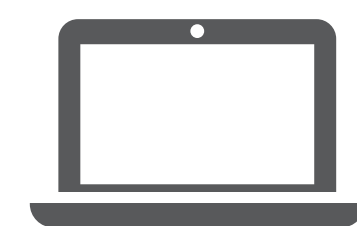
Rack space
2U for FAS500f



Screwdriver
Phillips #2

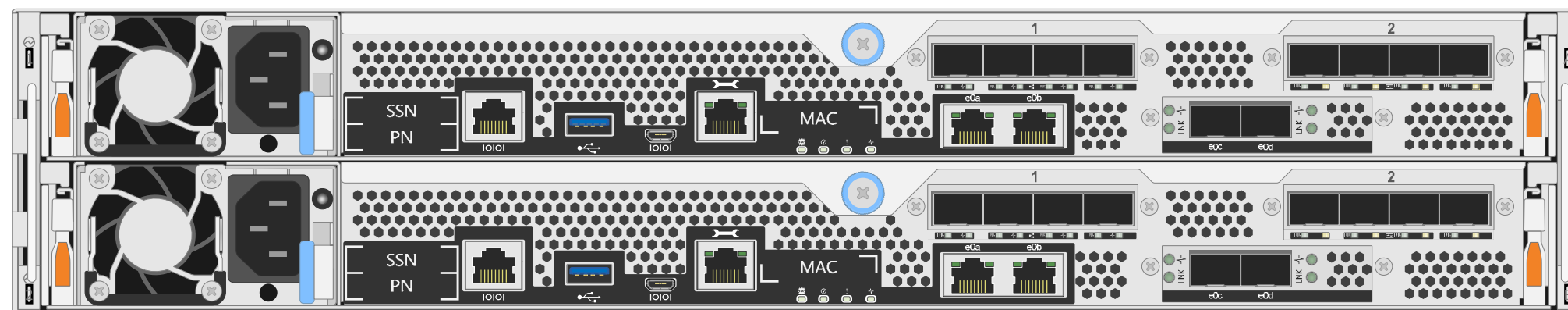


Additional network cables
For connecting your storage system to your network switch and laptop or console.



Laptop or console
With a USB/serial connection and access to a Web browser to configure your storage system

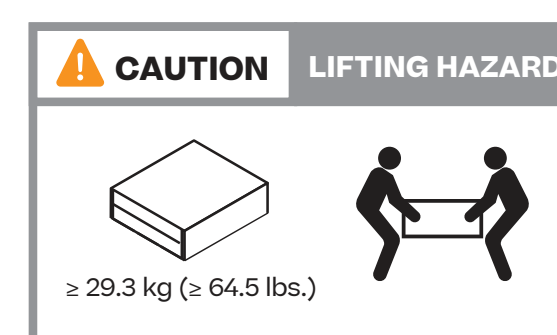
Install hardware | Stage 2



Rear view of FAS500f System

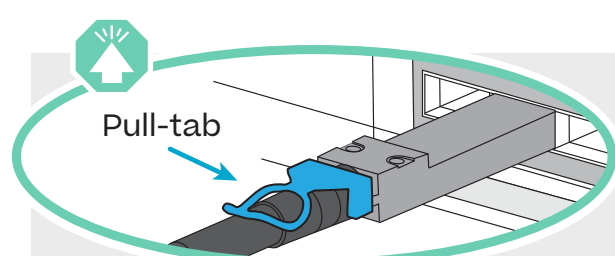
1 Install system in a rack or cabinet

- Install the rail or telco tray kits, as needed, and then install and secure your system using the instructions included with the kit.
- Use cable identification and management system of your choice. This system does not have a cable management device.
- Place the bezel on the front of the system.



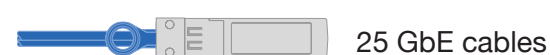
2 Cable the controller for a switchless or switched cluster

See your network administrator for help connecting to your switches.



Attention: Be sure to check the illustration arrow for the proper cable connector pull-tab orientation.
Note: To unplug a cable, gently pull the tab to release the locking mechanism.

Switchless cluster



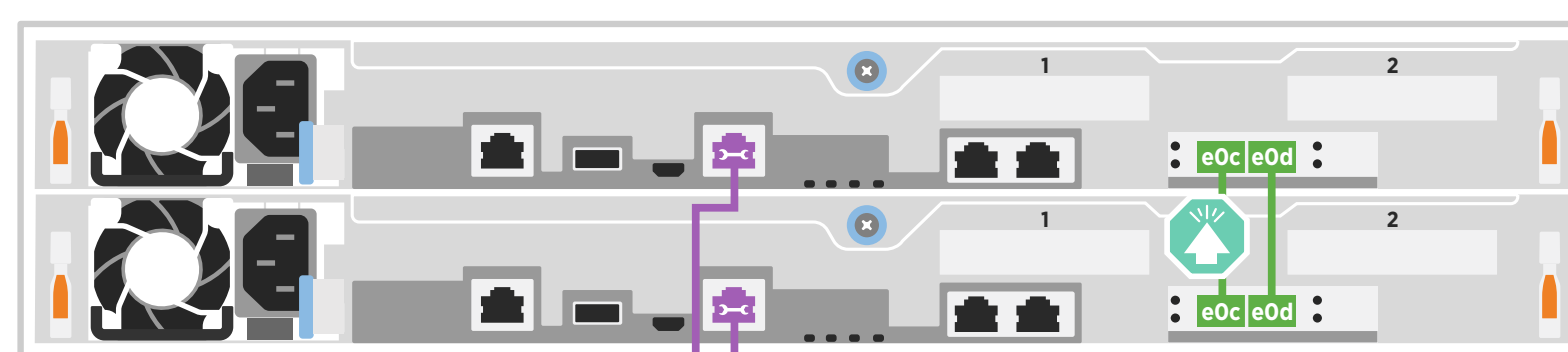
25 GbE cables

- Cable the e0c port to the e0c port and then cable the e0d port to the e0d port.



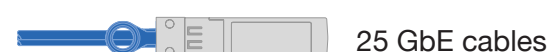
Ethernet cables

- Connect the wrench port (e0M/BMC) to the management switches.



To management network switches

Switched cluster



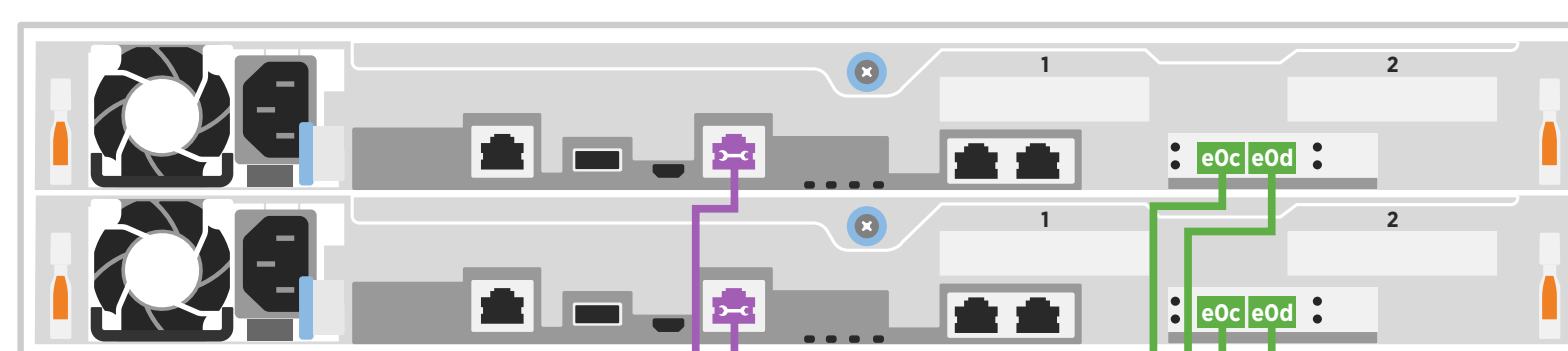
25 GbE cables

- Cable port e0c and port e0d on each controller to the cluster interconnect switches.



Ethernet cables

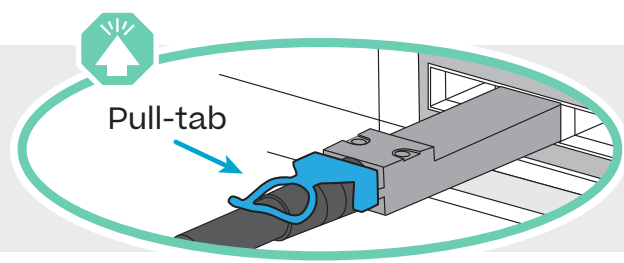
- Connect the wrench port (e0M/BMC) to the management switches.



To management network switches

To cluster interconnect switches

Cable configuration-dependent options | Stage 3

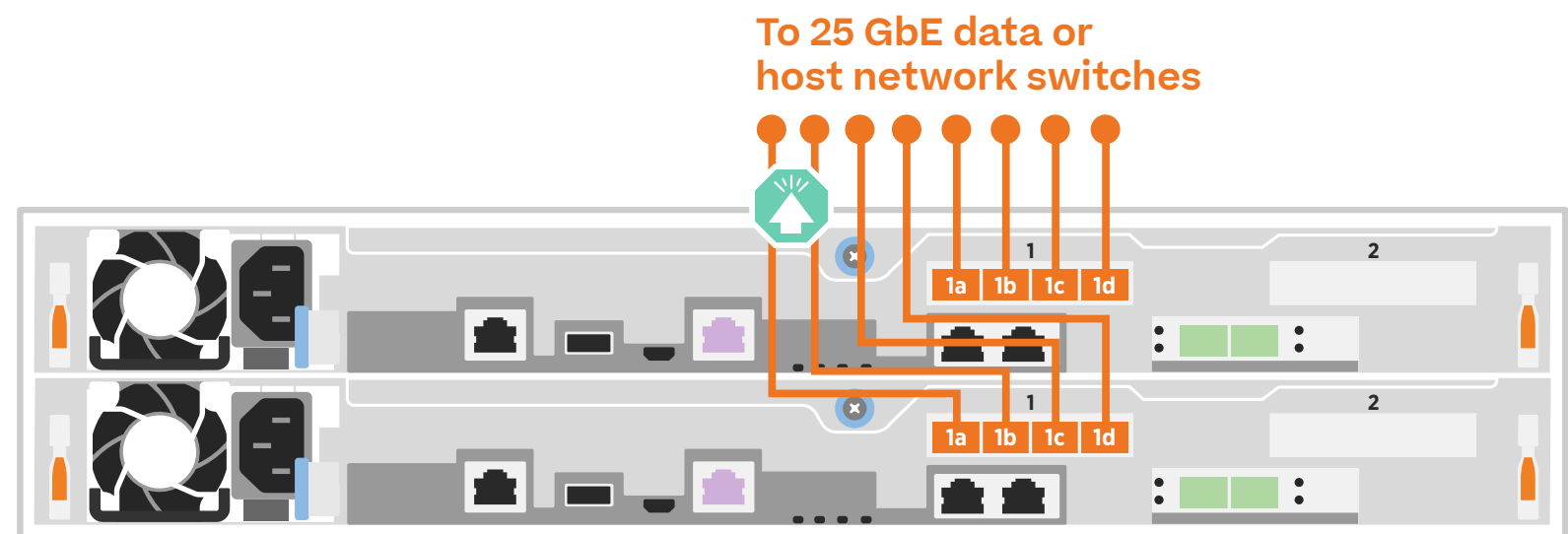


Attention: Be sure to check the illustration arrow for the proper cable connector pull-tab orientation.
Note: To unplug a cable, gently pull the tab to release the locking mechanism.

A 25 GbE host network



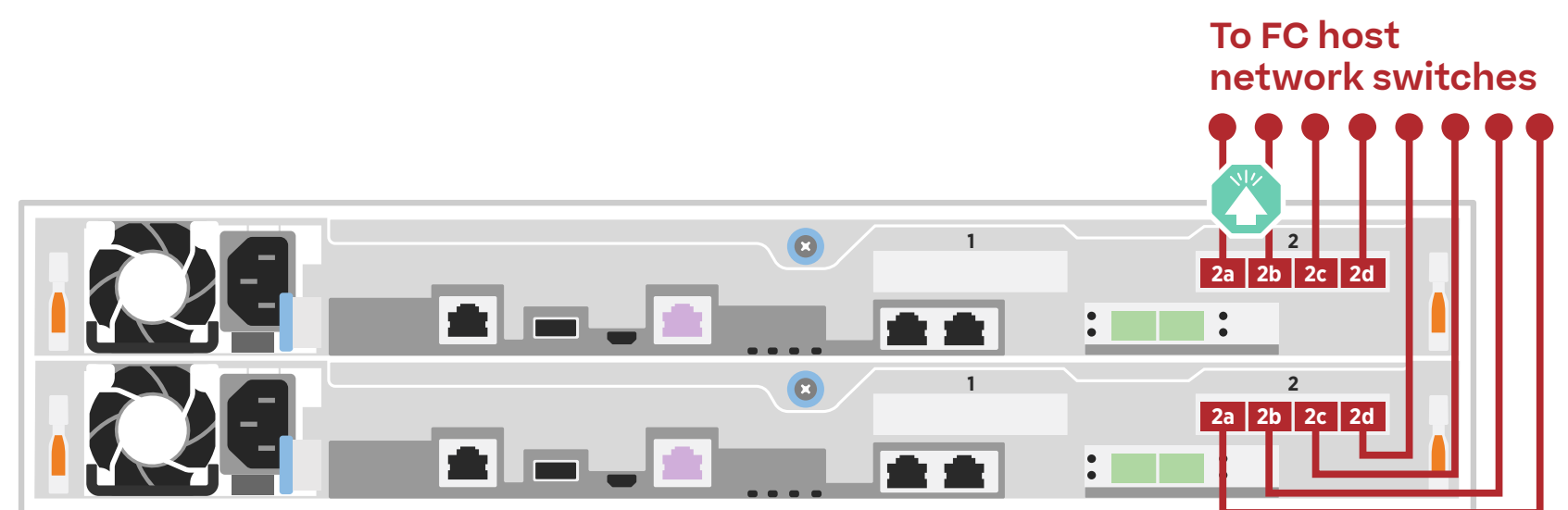
Cable ports 1a through 1d to data or host network switches.



B FC host network



Cable ports 2a through 2d to the FC host network switches.

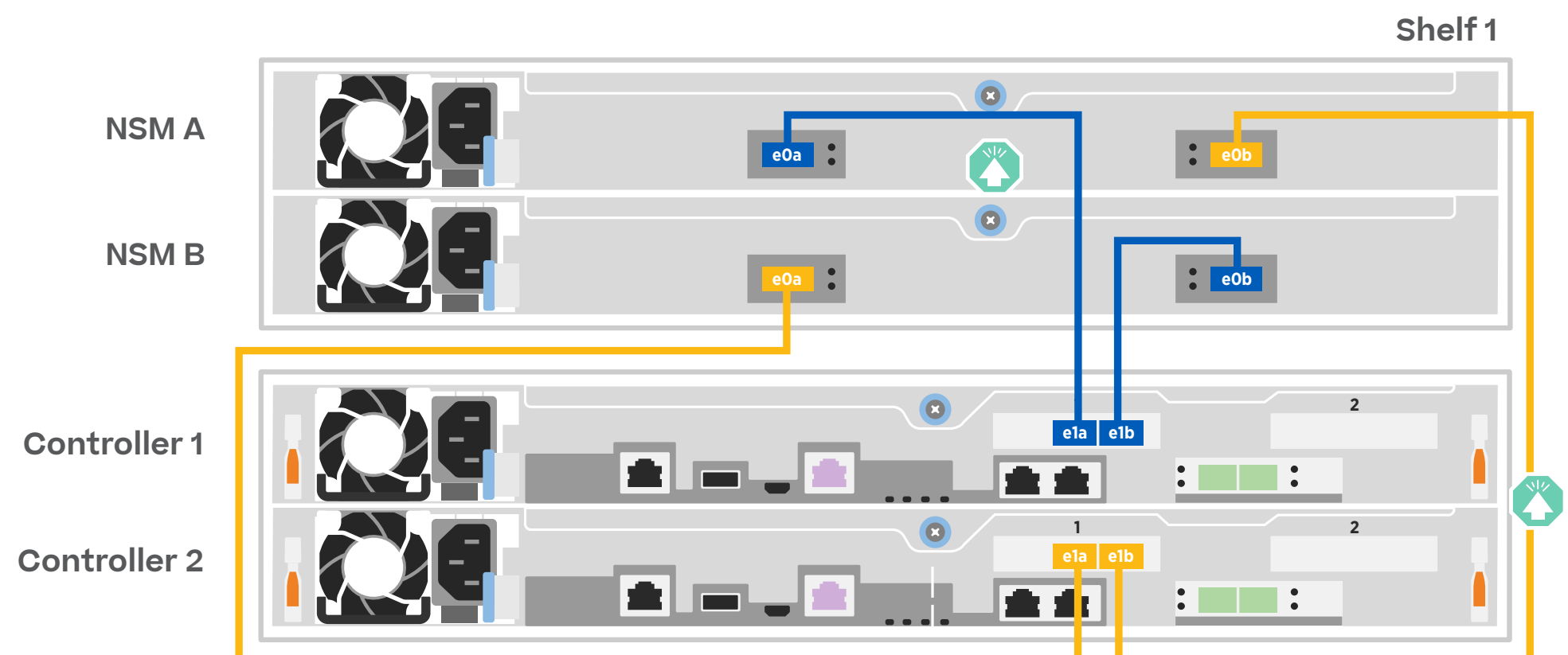


C External storage

Cabling a FAS500f system to one NS224 shelf



- 1 Cable e1a on controller 1 to the e0a on NSM A on the NS224.
Cable e1b on controller 1 to the e0b on NSM B on the NS224.
- 2 Cable e1a on controller 2 to the e0a on NSM B on the NS224.
Cable e1b on controller 2 to the e0b on NSM A on the NS224.

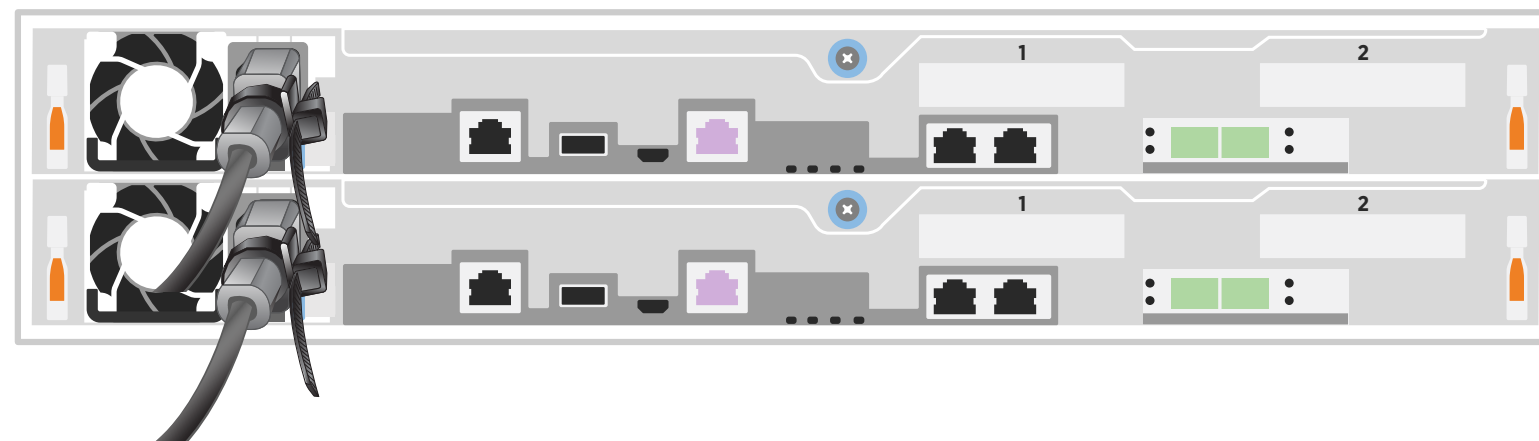


Complete system setup and configuration | Stage 4

1 Power on the controllers

Connect the controllers to different power sources.

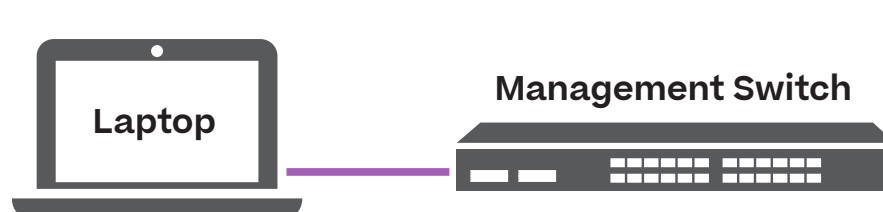
Note: The system begins to boot as soon as the power supplies are connected to the power sources. **Booting may take up to 8 minutes.**



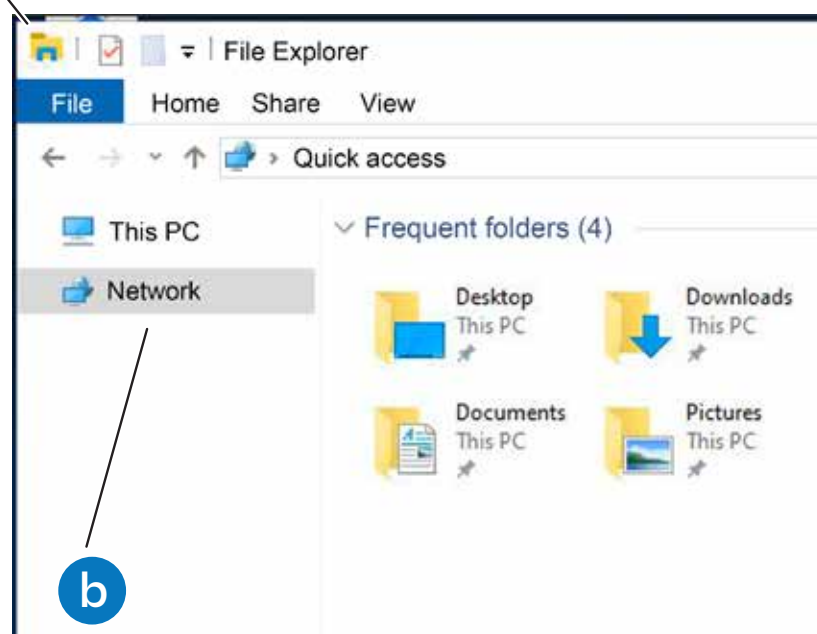
2 Complete initial cluster setup with network discovery:

Note: If your laptop does not support network discovery, see the [Detailed guide](#).

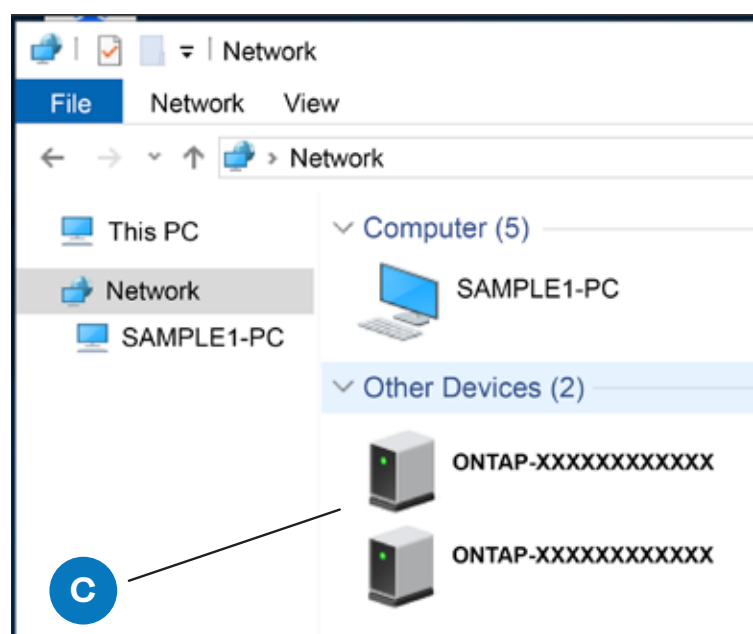
Connect your laptop to the management switch and access the network computers and devices.



a Open File Explorer



b Click network in the left pane. Then right click and select refresh.



c Double-click either ONTAP icon
Note: Accept any certificates displayed on your screen.

The diagram illustrates the network discovery process. On the left, a laptop is connected to a management switch. The main part of the image shows two screenshots of Windows File Explorer. The first screenshot shows the 'Network' pane in the left sidebar, with a blue circle 'b' pointing to it. The second screenshot shows the 'Network' view, where the 'Other Devices' section contains two ONTAP icons, with a blue circle 'c' pointing to one of them. A note below the second screenshot states: 'Double-click either ONTAP icon. Note: Accept any certificates displayed on your screen.'

3 Use System Manager Guided Setup to configure your cluster

4 Completing setup

1. Click...

- mysupport.netapp.com
- [Create/log in to your account](#)
- [Download and install Active IQ Config Advisor](#)
- [Register your system](#)

2. Verify the health of your system by running Config Advisor.

3. After you have completed the initial configuration, go to the [NetApp ONTAP Resources](#) page for information about configuring additional features in ONTAP.