



构建

Snap Creator Framework

Zachary Wambold
August 04, 2021

目 录

□建□□	1
------	-------	---

创建

可以使用 Snap Creator GUI 创建。

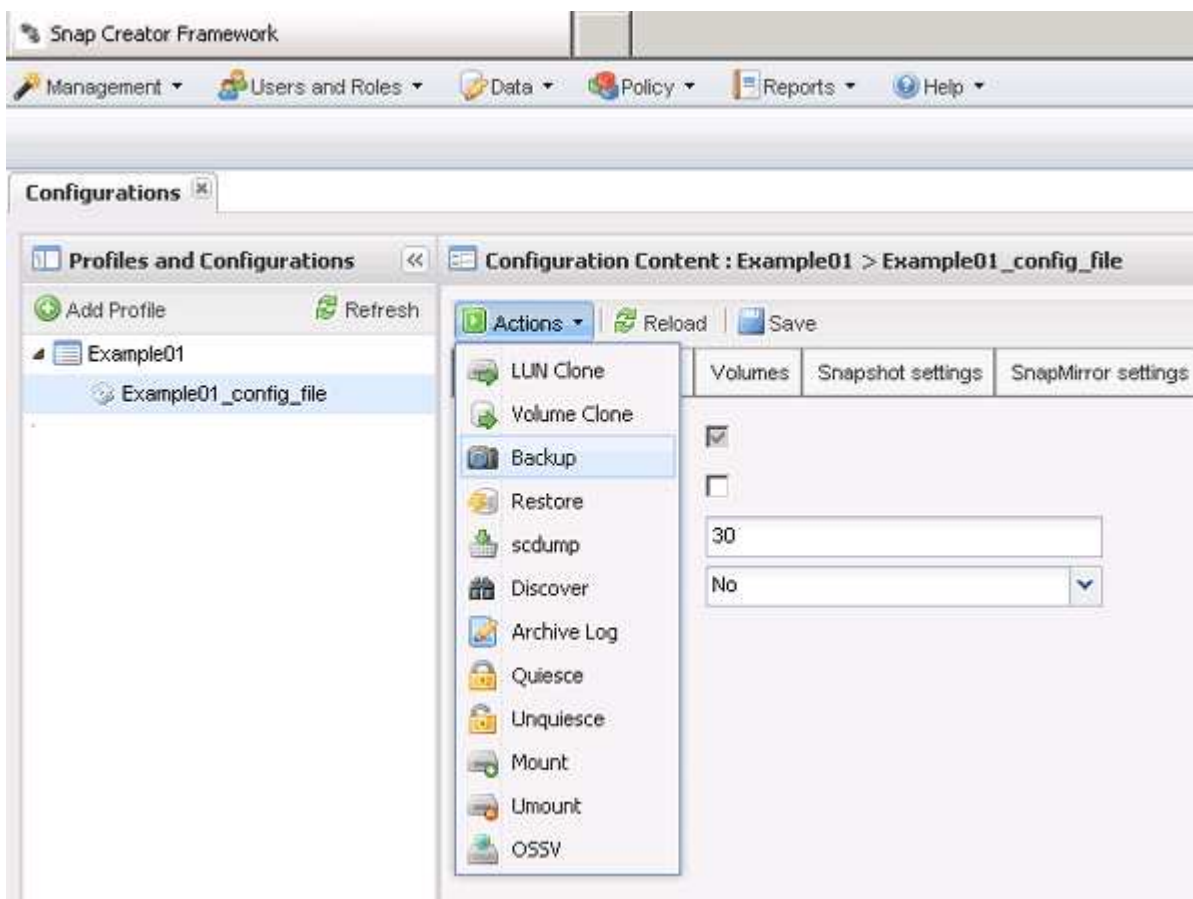
必须满足以下条件之一：

- 必须在配置文件中定义策略；或者
- 必须配置策略对象并将其分配配置文件。



如果定义了策略对象，会覆盖配置文件中可能包含的任何条目。

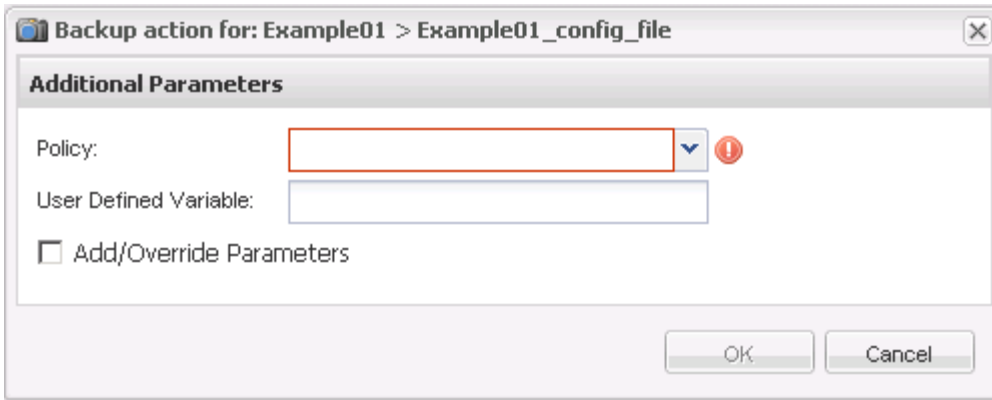
- 从 Snap Creator GUI 主菜单中，选择 * 管理 * > * 配置 *。
- 从 * 配置 * 窗口的 * 配置文件和配置 * 表格中，选择配置文件。
- 选择 * 操作 * > * 策略 *。



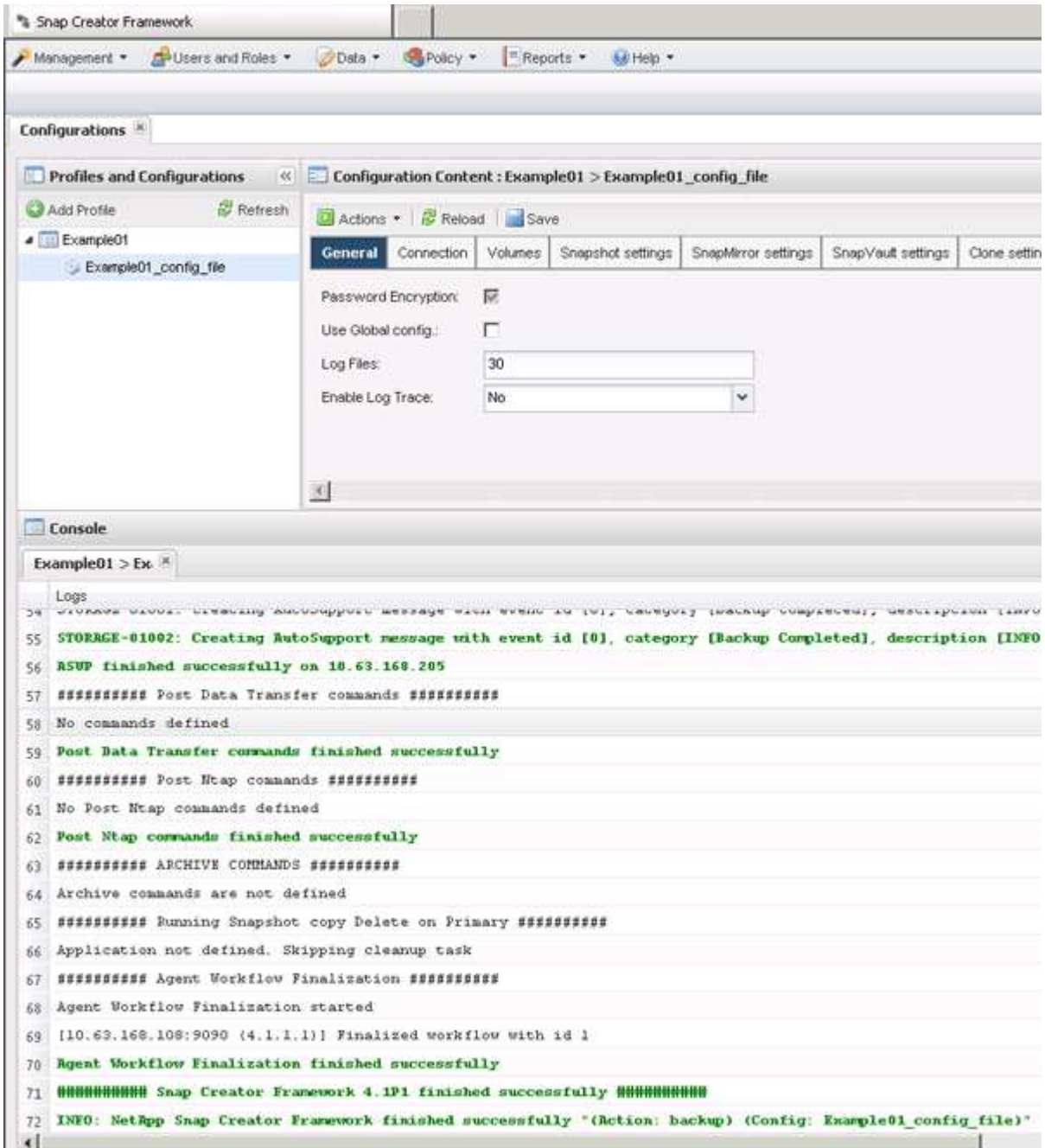
- 在其他参数框中，选择策略，然后选择 * 定义 * 以。



如果没有配置分配用创建的策略，可以在 * 策略 * 下拉列表中选择小时，天，周和月。如果配置分配了一个或多个用创建的策略，有些策略将显示在 * 策略 * 下拉列表中。



e. 是否有操作的信息是否显示在 * 控制台 * 视图中。



在此示例中，`^C` 指示 Snap Creator 操作已成功完成。



* 控制台 * 表格显示最相关的信息；`^C` 是 `^C` 模式。要查看有 `^C` 行的操作的 `^C` 信息，`^C` 界面部分的 * 报告 * > * 日志 *。在日志 `^C` 中，可以 `^C` 配置文件，配置文件，日志 `^C` 型和特定日志。

Copyright Information

Copyright © 2021 NetApp, Inc. All rights reserved. Printed in the U.S. No part of this document covered by copyright may be reproduced in any form or by any means-graphic, electronic, or mechanical, including photocopying, recording, taping, or storage in an electronic retrieval system- without prior written permission of the copyright owner.

Software derived from copyrighted NetApp material is subject to the following license and disclaimer:

THIS SOFTWARE IS PROVIDED BY NETAPP "AS IS" AND WITHOUT ANY EXPRESS OR IMPLIED WARRANTIES, INCLUDING, BUT NOT LIMITED TO, THE IMPLIED WARRANTIES OF MERCHANTABILITY AND FITNESS FOR A PARTICULAR PURPOSE, WHICH ARE HEREBY DISCLAIMED. IN NO EVENT SHALL NETAPP BE LIABLE FOR ANY DIRECT, INDIRECT, INCIDENTAL, SPECIAL, EXEMPLARY, OR CONSEQUENTIAL DAMAGES (INCLUDING, BUT NOT LIMITED TO, PROCUREMENT OF SUBSTITUTE GOODS OR SERVICES; LOSS OF USE, DATA, OR PROFITS; OR BUSINESS INTERRUPTION) HOWEVER CAUSED AND ON ANY THEORY OF LIABILITY, WHETHER IN CONTRACT, STRICT LIABILITY, OR TORT (INCLUDING NEGLIGENCE OR OTHERWISE) ARISING IN ANY WAY OUT OF THE USE OF THIS SOFTWARE, EVEN IF ADVISED OF THE POSSIBILITY OF SUCH DAMAGE.

NetApp reserves the right to change any products described herein at any time, and without notice. NetApp assumes no responsibility or liability arising from the use of products described herein, except as expressly agreed to in writing by NetApp. The use or purchase of this product does not convey a license under any patent rights, trademark rights, or any other intellectual property rights of NetApp.

The product described in this manual may be protected by one or more U.S. patents, foreign patents, or pending applications.

RESTRICTED RIGHTS LEGEND: Use, duplication, or disclosure by the government is subject to restrictions as set forth in subparagraph (c)(1)(ii) of the Rights in Technical Data and Computer Software clause at DFARS 252.277-7103 (October 1988) and FAR 52-227-19 (June 1987).

Trademark Information

NETAPP, the NETAPP logo, and the marks listed at <http://www.netapp.com/TM> are trademarks of NetApp, Inc. Other company and product names may be trademarks of their respective owners.