



在 Windows 上安装 Snap Creator Agent Snap Creator Framework

NetApp
August 04, 2021



在 Windows 上安装 Snap Creator Agent 1

在 Windows 上安装 Snap Creator Agent

□ 可以使用 Windows 安装程序在 Windows 主机上安装 Snap Creator Agent 。

- 必□安装 JRE 1.8 Update 72 或更高版本。
- □必□具有管理□□□的□限。
- 默□端口（ 9090 ）或其他网□端口必□可用。
- 必□下□ Snap Creator 。
- a. 双□ Snap_Creator_Frameworkrelease-Windowsversion.exe 文件□□（例如 Snap_Creator_FridFramework 4.1.0-Windows64.exe ） □□ Snap Creator 安装程序。
- b. 在□迎□面上， □□ * 下一□ * □始安装。
- c. □看并接受□可□□的条款。
- d. 在□□安装□型□面上， 根据各□安装□型配置以下□置：

▪ * □□安装□型 *

□□ * 代理 * 。

▪ * 将代理作□服□□□ *

□□此□□可在安装□程完成后立即安装并□□ * 快照代理服□ * 。

如果未□□此□□， □会禁用代理端口字段。



如果不□□此□□， □不会安装此服□， □必□通□从命令提示符□行批□理脚本来手□□ □ Snap Creator Agent 。

▪ * □入系□ IP*

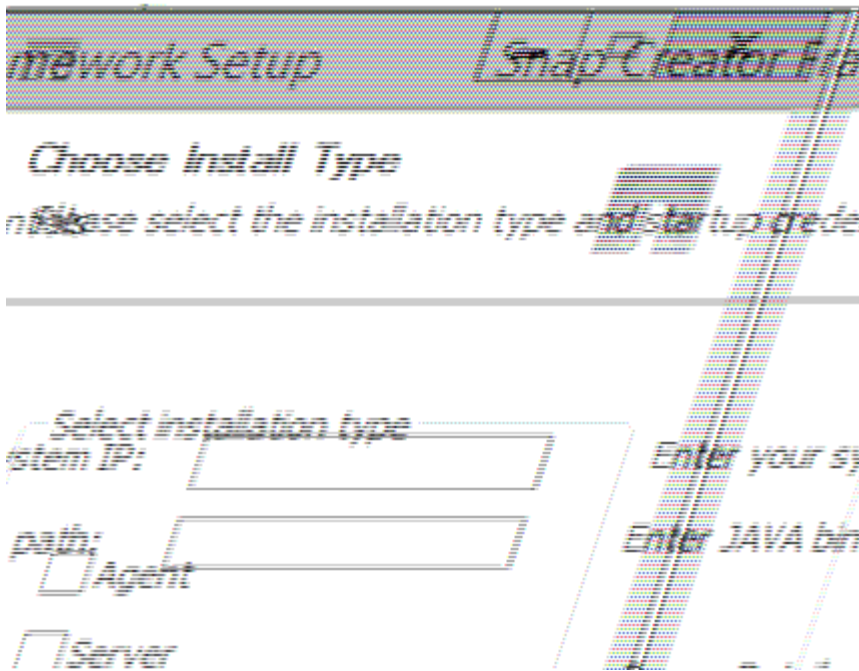
□□此□□可提供安装 Snap Creator Server 或 Snap Creator Agent 的系□的 IP 地址。此□□用于在 Snap Creator 安装□程中生成 SSL □□。

▪ * □入 Java 文件箱路径 *

□□此□□可提供 Java 文件箱路径以□□ keytool □用程序。keytool □用程序用于在 Snap Creator 安装□程中生成 SSL □□。

▪ * 代理端口 *

接受默□端口（ 9090 ）或指定端口号。



e. **Next** * 下一 *。

f. 在 **System Path** 安装位置框面上，输入 Snap Creator 安装路径或接受默认路径（C : \Program Files\NetApp\Snap_Creator_Framework），然后 **Next** * 下一 *。



如果系统使用 IBM Domino 文件，必须将 Domino 数据文件以外的其他位置。

g. 在 **Start Menu** 始菜文件框面上，自定义 Snap Creator 显示在 Windows 始菜中的文件或接受默认文件，然后 **Next** * 安装 *。

h. 安装完成后，**Next** * 下一 *。

在 Snap Creator Agent 服务安装期间，如果在安装过程中安装了某个服务，会显示命令提示符。此过程会有服务；因此，在此过程中通常会列出失败消息，忽略某些消息。

i. **Finish** * 完成 * 完成 Windows 安装程序。

如果在安装过程中未 **Next** * 将代理服务 * 安装，必须手动安装 Snap Creator 代理。

• 相关信息 *

[在 Snap Creator 主机上安装 Java](#)

[下载 Snap Creator 文件](#)

[从命令提示符安装代理](#)

Copyright Information

Copyright © 2021 NetApp, Inc. All rights reserved. Printed in the U.S. No part of this document covered by copyright may be reproduced in any form or by any means-graphic, electronic, or mechanical, including photocopying, recording, taping, or storage in an electronic retrieval system- without prior written permission of the copyright owner.

Software derived from copyrighted NetApp material is subject to the following license and disclaimer:

THIS SOFTWARE IS PROVIDED BY NETAPP "AS IS" AND WITHOUT ANY EXPRESS OR IMPLIED WARRANTIES, INCLUDING, BUT NOT LIMITED TO, THE IMPLIED WARRANTIES OF MERCHANTABILITY AND FITNESS FOR A PARTICULAR PURPOSE, WHICH ARE HEREBY DISCLAIMED. IN NO EVENT SHALL NETAPP BE LIABLE FOR ANY DIRECT, INDIRECT, INCIDENTAL, SPECIAL, EXEMPLARY, OR CONSEQUENTIAL DAMAGES (INCLUDING, BUT NOT LIMITED TO, PROCUREMENT OF SUBSTITUTE GOODS OR SERVICES; LOSS OF USE, DATA, OR PROFITS; OR BUSINESS INTERRUPTION) HOWEVER CAUSED AND ON ANY THEORY OF LIABILITY, WHETHER IN CONTRACT, STRICT LIABILITY, OR TORT (INCLUDING NEGLIGENCE OR OTHERWISE) ARISING IN ANY WAY OUT OF THE USE OF THIS SOFTWARE, EVEN IF ADVISED OF THE POSSIBILITY OF SUCH DAMAGE.

NetApp reserves the right to change any products described herein at any time, and without notice. NetApp assumes no responsibility or liability arising from the use of products described herein, except as expressly agreed to in writing by NetApp. The use or purchase of this product does not convey a license under any patent rights, trademark rights, or any other intellectual property rights of NetApp.

The product described in this manual may be protected by one or more U.S. patents, foreign patents, or pending applications.

RESTRICTED RIGHTS LEGEND: Use, duplication, or disclosure by the government is subject to restrictions as set forth in subparagraph (c)(1)(ii) of the Rights in Technical Data and Computer Software clause at DFARS 252.277-7103 (October 1988) and FAR 52-227-19 (June 1987).

Trademark Information

NETAPP, the NETAPP logo, and the marks listed at <http://www.netapp.com/TM> are trademarks of NetApp, Inc. Other company and product names may be trademarks of their respective owners.