



配置 backup 用户和 hdbuserstore Snap Creator Framework

NetApp
August 04, 2021



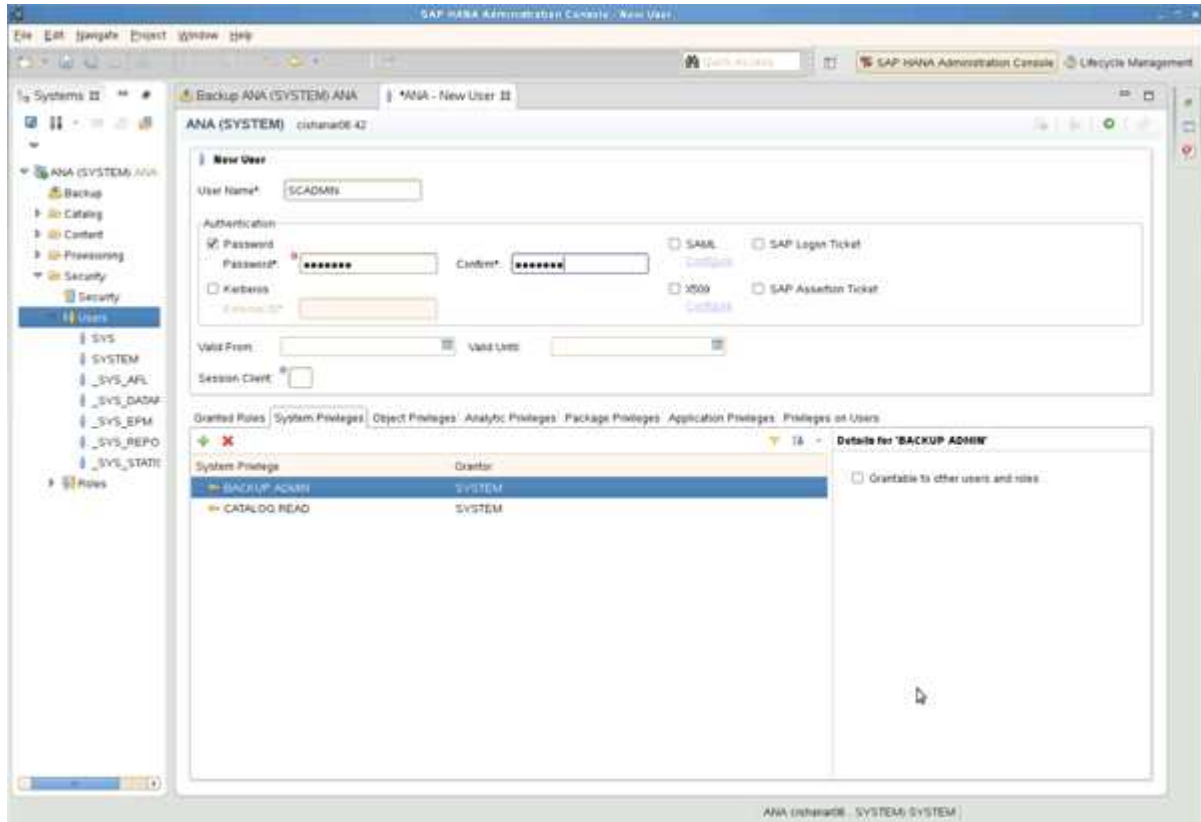
配置□□用□和 hdbuserstore 1

配置用户和 hdbuserstore

在 HANA 数据中配置一个用户数据用户，以便使用 Snap Creator 进行操作。第二步，配置此用户配置 SAP HANA 用户存储密码。此用户存储密码用于配置 Snap Creator SAP HANA 文件。

用户必须具有以下权限：

- 管理
- 目录



1. 在安装了 Snap Creator 的主机管理主机上，系会 SAP HANA 数据中的所有数据主机配置用户存储密码。用户存储密码配置有操作系统 root 用户：hdbuserstore set keyhost 3[例]15 用户密码
2. 所有四个数据点配置一个密码。

```
mgmtsrv01:/usr/sap/hdbclient32 # ./hdbuserstore set SCADMIN08
cishanar08:34215 SCADMIN Password
mgmtsrv01:/usr/sap/hdbclient32 # ./hdbuserstore set SCADMIN09
cishanar09:34215 SCADMIN Password
mgmtsrv01:/usr/sap/hdbclient32 # ./hdbuserstore set SCADMIN10
cishanar10:34215 SCADMIN password
mgmtsrv01:/usr/sap/hdbclient32 # ./hdbuserstore set SCADMIN11
cishanar11:34215 SCADMIN Password
mgmtsrv01:/usr/sap/hdbclient32 # ./hdbuserstore LIST
DATA FILE          : /root/.hdb/mgmtsrv01/SSFS_HDB.DAT
```

KEY SCADMIN08

ENV : cishanar08:34215

USER: SCADMIN

KEY SCADMIN09

ENV : cishanar09:34215

USER: SCADMIN

KEY SCADMIN10

ENV : cishanar10:34215

USER: SCADMIN

KEY SCADMIN11

ENV : cishanar11:34215

USER: SCADMIN

mgmtsrv01:/usr/sap/hdbclient32

Copyright Information

Copyright © 2021 NetApp, Inc. All rights reserved. Printed in the U.S. No part of this document covered by copyright may be reproduced in any form or by any means-graphic, electronic, or mechanical, including photocopying, recording, taping, or storage in an electronic retrieval system- without prior written permission of the copyright owner.

Software derived from copyrighted NetApp material is subject to the following license and disclaimer:

THIS SOFTWARE IS PROVIDED BY NETAPP "AS IS" AND WITHOUT ANY EXPRESS OR IMPLIED WARRANTIES, INCLUDING, BUT NOT LIMITED TO, THE IMPLIED WARRANTIES OF MERCHANTABILITY AND FITNESS FOR A PARTICULAR PURPOSE, WHICH ARE HEREBY DISCLAIMED. IN NO EVENT SHALL NETAPP BE LIABLE FOR ANY DIRECT, INDIRECT, INCIDENTAL, SPECIAL, EXEMPLARY, OR CONSEQUENTIAL DAMAGES (INCLUDING, BUT NOT LIMITED TO, PROCUREMENT OF SUBSTITUTE GOODS OR SERVICES; LOSS OF USE, DATA, OR PROFITS; OR BUSINESS INTERRUPTION) HOWEVER CAUSED AND ON ANY THEORY OF LIABILITY, WHETHER IN CONTRACT, STRICT LIABILITY, OR TORT (INCLUDING NEGLIGENCE OR OTHERWISE) ARISING IN ANY WAY OUT OF THE USE OF THIS SOFTWARE, EVEN IF ADVISED OF THE POSSIBILITY OF SUCH DAMAGE.

NetApp reserves the right to change any products described herein at any time, and without notice. NetApp assumes no responsibility or liability arising from the use of products described herein, except as expressly agreed to in writing by NetApp. The use or purchase of this product does not convey a license under any patent rights, trademark rights, or any other intellectual property rights of NetApp.

The product described in this manual may be protected by one or more U.S. patents, foreign patents, or pending applications.

RESTRICTED RIGHTS LEGEND: Use, duplication, or disclosure by the government is subject to restrictions as set forth in subparagraph (c)(1)(ii) of the Rights in Technical Data and Computer Software clause at DFARS 252.277-7103 (October 1988) and FAR 52-227-19 (June 1987).

Trademark Information

NETAPP, the NETAPP logo, and the marks listed at <http://www.netapp.com/TM> are trademarks of NetApp, Inc. Other company and product names may be trademarks of their respective owners.